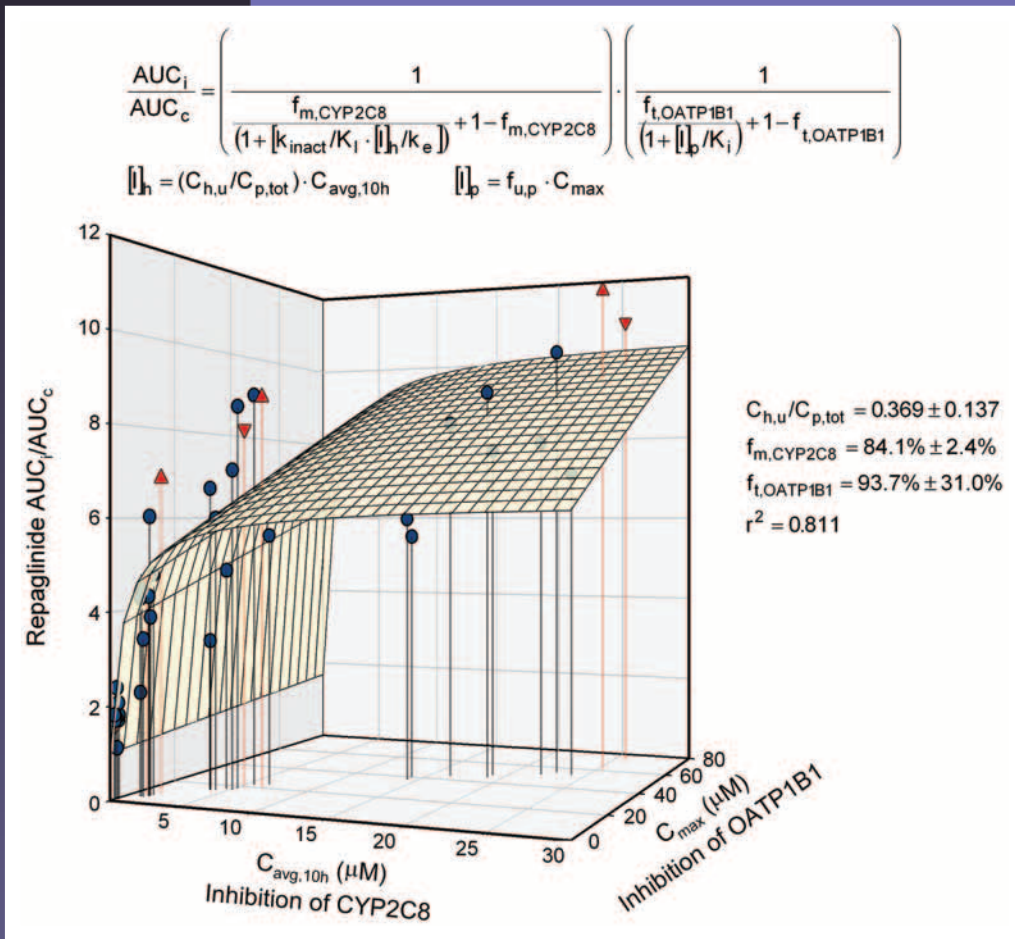


# DRUG METABOLISM AND DISPOSITION



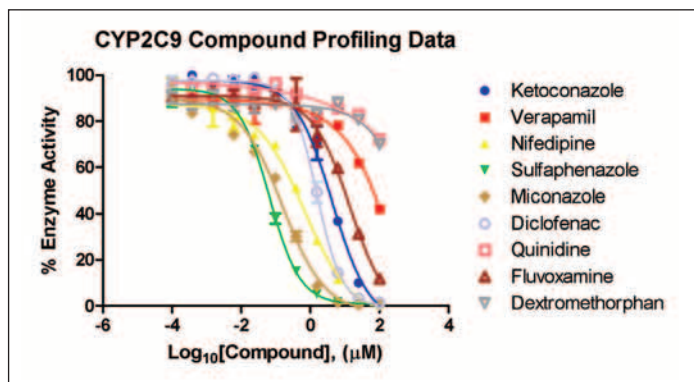
A Publication of the  
American Society for Pharmacology  
and Experimental Therapeutics

# ADME/Tox Processes are Complicated



## BioTek's Easy-To-Use Automation Instruments Are Not.

We provide uncomplicated automation tools to streamline ADME/Tox processes, improve lab productivity, and boost data confidence versus manual methods. See how our instruments can simplify your workflow, and explore validated ADME/Tox applications at [www.biotek.com/ADMETox](http://www.biotek.com/ADMETox).



**BioTek**<sup>®</sup>  
Get a Better Reaction.

Scan with your SmartPhone to learn more.

bioprediction

# Biotransport.

Predict drug-drug interactions using  
CompoZr® **transporter knockout assays.**



Learn more about BCRP and other unique cell based assays that better predict drug-drug interactions at [sigma.com/admetox](http://sigma.com/admetox)

**SIGMA-ALDRICH**

**SIGMA** Where *bio* begins™  
Life Science

©2011 Sigma-Aldrich Co. LLC. All rights reserved. SIGMA and SIGMA-ALDRICH are trademarks of Sigma-Aldrich Co. LLC, registered in the US and other countries. CompoZr is a registered trademark of Sigma-Aldrich Co. LLC. Where bio begins is a trademark of Sigma-Aldrich Co. LLC.

# Are you climbing a mountain of data?

*An overwhelming amount of data and research options can paralyze your decision-making process.*

With XenoTech, you gain the clarity and confidence to advance your study from research to IND. Our guidance, comprehensive reporting and industry insight empower you to execute your next steps with accuracy and assurance. XenoTech will help you interpret your data in the changing context of the safety and regulatory landscape and streamline your drug development program – call us today.

 [xenotechllc.com](http://xenotechllc.com) | (877) 588-7530

 **XENOTECH**  
A DIVISION OF **SEKISUI**

