

Correction to “Gestational Age-Dependent Changes in Gene Expression of Metabolic Enzymes and Transporters in Pregnant Mice”

In the article referenced above [Shuster DL, Bammler TK, Beyer RP, MacDonald JW, Tsai JM, Farin FM, Hebert MF, Thummel KE, and Mao Q (2013) *Drug Metab Dispos* **41**:332–342], the last character of every label in Fig. 4D was shifted down during publication, leaving the labels incorrect. The revised Fig. 4 is provided below. This error was solely in the figure label.

The online versions have been corrected.

The printer regrets this error and apologizes for any inconvenience it may have caused.

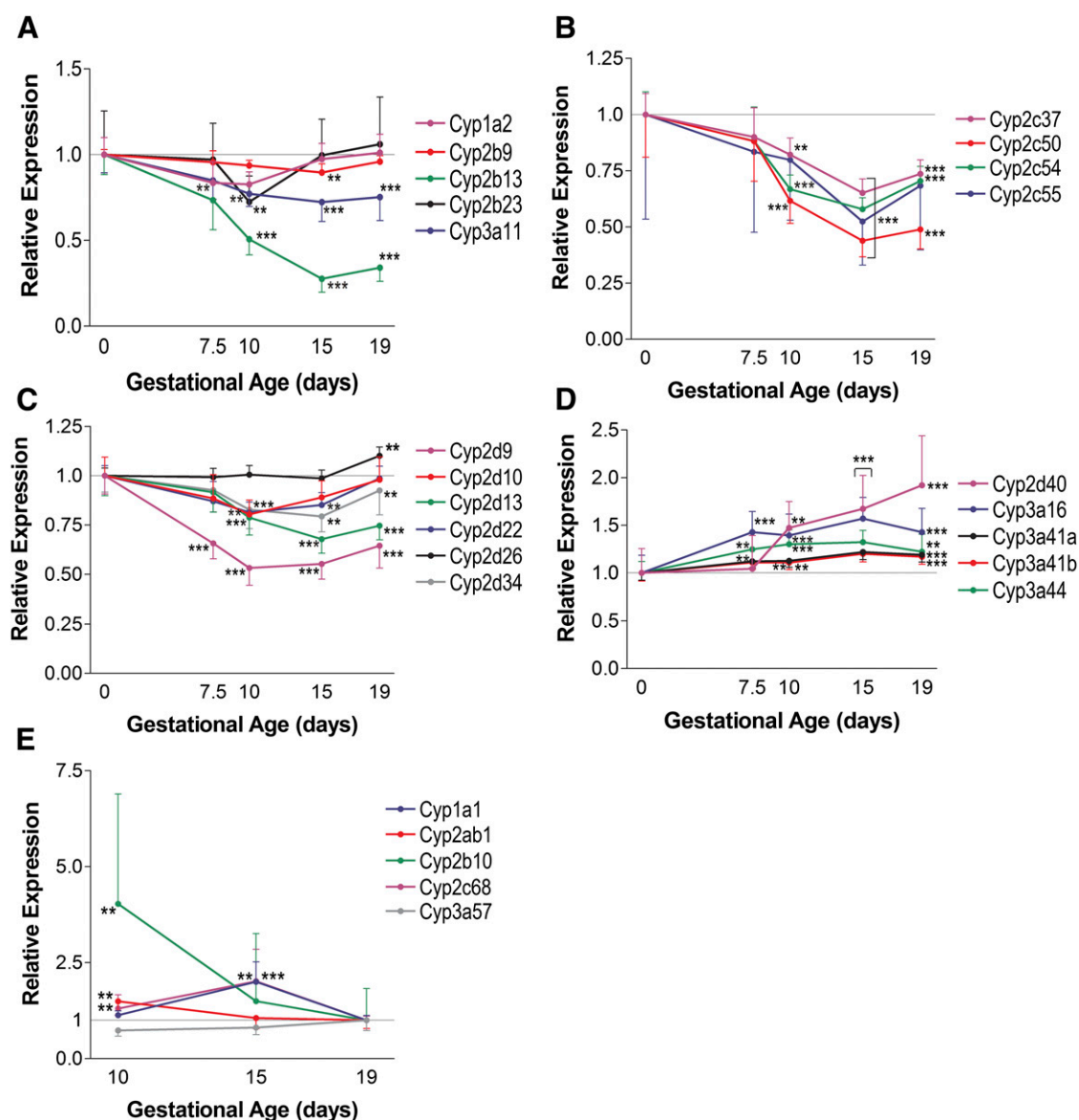


Fig. 4. Gestational age-dependent trends in cytochrome P450 gene expression in the maternal liver and placenta. Shown are expression means \pm S.E. for selected genes in the liver (A–D) and placenta (E) from five animals. All panels are expressed as relative fold changes compared with gd 0 (liver) or gd 19 (placenta). Data points in brackets share the same statistical significance. ** Unadjusted P value < 0.01; ***Unadjusted P value < 0.001.