

THIS ARTICLE HAS BEEN CORRECTED. SEE LAST PAGE.

Special Section on Prediction of Human Pharmacokinetic Parameters from In Vitro Systems

Meeting the Challenge of Predicting Hepatic Clearance of Compounds Slowly Metabolized by Cytochrome P450 Using a Novel Hepatocyte Model, HepatoPac

Tom S. Chan, Hongbin Yu, Amanda Moore, Salman R. Khetani, and Donald Tweedie

Drug Metabolism and Pharmacokinetics, Boehringer Ingelheim Pharmaceuticals, Ridgefield, Connecticut (T.S.C., H.Y., D.T.); Hepregen Corporation, Medford, Massachusetts (A.M.); and Mechanical and Biomedical Engineering, Colorado State University, Fort Collins, Colorado (S.R.K.)

Received June 20, 2013; accepted August 15, 2013

ABSTRACT

Generating accurate *in vitro* intrinsic clearance data is an important aspect of predicting *in vivo* human clearance. Primary hepatocytes in suspension are routinely used to predict *in vivo* clearance; however, incubation times have typically been limited to 4–6 hours, which is not long enough to accurately evaluate the metabolic stability of slowly metabolized compounds. HepatoPac is a micropatterned hepatocyte-fibroblast coculture system that can be used for continuous incubations of up to 7 days. This study evaluated the ability of human HepatoPac to predict the *in vivo* clearance (CL) of 17 commercially available compounds with low to intermediate clearance (<12 ml/min/kg). *In vitro* half-life for disappearance of each compound was converted to hepatic clearance using the well stirred model, with and without correction for plasma protein binding. Hepatic CL, using three individual donors, was accurately predicted for 11 of 17 compounds (59%; predicted clearance within 2-fold of observed human *in vivo* clearance

values). The accuracy of prediction increased to 82% (14 of 17 compounds) with an acceptance criterion defined as within 3-fold. When considering only low clearance compounds (<5 ml/min per kg), which represented 10 of the 17 compounds, the accuracy of prediction was 70% within 2-fold and 100% within 3-fold. In addition, the turnover of three slowly metabolized compounds (alprazolam, meloxicam, and tolbutamide) in HepatoPac was directly compared with turnover in suspended hepatocytes. The turnover of alprazolam and tolbutamide was approximately 2-fold greater using HepatoPac compared with suspended hepatocytes, which was roughly in line with the extrapolated values (correcting for the longer incubation time and lower cell number with HepatoPac). HepatoPac, but not suspended hepatocytes, demonstrated significant turnover of meloxicam. These results demonstrate the utility of HepatoPac for prediction of *in vivo* hepatic clearance, particularly with low clearance compounds.

Introduction

The development of drug candidates with acceptable pharmacokinetic (PK) parameters continues to be a challenge (Kola and Landis, 2004). Prospectively predicting PK parameters, using *in vitro* metabolism data, is a critical approach to mitigating the risk of advancing compounds with poor PK characteristics in the clinic. Metabolism by the liver is responsible for the clearance of approximately 70% of marketed drugs (Wienkers and Heath, 2005). The pharmaceutical industry has increasingly relied on the predictive power of *in vitro* models, such as liver

subcellular fractions or hepatocyte preparations, to identify compounds with acceptable clearance characteristics (i.e., lower clearance compounds suitable for once-daily dosing) (Carlile et al., 1997; Iwatsubo et al., 1997; Brandon et al., 2003; Fagerholm, 2007). Hepatocyte suspensions reflect all metabolic pathways of the liver and this integrated metabolic capability potentially offers some clear advantages for hepatocytes as the model of choice for predicting hepatic clearance (Lau et al., 2002; Brown et al., 2007; Fagerholm, 2007). A tendency of hepatocytes to underpredict metabolic clearance compromises this position (Hallifax et al., 2010).

One of the key challenges in using suspended hepatocytes for predicting hepatic clearance is the loss of activity of drug-metabolizing enzymes that restricts the typical incubation period to 4–6 hours (Elaut

S.R.K. is an equity holder in Hepregen Corporation.

T.S.C. and H.Y. contributed equally to this work.

https://doi.org/10.1124/dmd.113.053397.

ABBREVIATIONS: C_0 , initial concentration; C_t , concentration at a specified time during the incubation; CL, clearance; CL_{H_1} , predicted hepatic clearance; CL_{int} , intrinsic clearance; $CL_{nonrenal}$, observed human *in vivo* nonrenal clearance; f_u , fraction of drug unbound to plasma protein; HCM, hepatocyte culture medium; ITS, insulin, transferrin, and selenium; k_{el} , elimination rate constant; MCS, Monte Carlo simulation; P450, cytochrome P450; PK, pharmacokinetic; Q, hepatic blood flow; R_b , red blood cell partitioning; $t_{1/2}$, half-life.

et al., 2006; Stringer et al., 2008). This limited incubation time prohibits the accurate determination of the intrinsic clearance (CL_{int}) of compounds that are slowly metabolized. Consequently, an in vitro hepatocyte model that can survive (incubate) longer would offer the possibility of overcoming this restriction (Obach, 1999; Lau et al., 2002; Andersson et al., 2004; Riley et al., 2005; Brown et al., 2007).

HepatoPac is a micropatterned coculture of human hepatocytes, supported by mouse embryonic 3T3 fibroblasts, that has been engineered to possess extended cell viability (typically up to 6 weeks) with retention of in vivo-like hepatocyte functions in culture (e.g., albumin secretion, urea synthesis, and drug metabolizing activities) (Khetani and Bhatia, 2008; Wang et al., 2010). This in vitro hepatocyte culture system was shown to replicate in vivo metabolite profiles after incubations for 7 days, without a change in medium, which allowed ample time for the accumulation of detectable levels of metabolites that are slowly formed or derived from sequential metabolic pathways (Wang et al., 2010). In this study, HepatoPac was used to experimentally determine the metabolic turnover of 17 commercially available drugs that are low to moderately cleared in vivo (mainly by the liver). Hepatic clearances (CL_h) were then calculated using the well stirred model and compared with published human in vivo nonrenal clearance ($CL_{nonrenal}$) values to determine the accuracy of predictions. In addition, the depletion of three slowly metabolized compounds was followed in suspended hepatocytes and compared with HepatoPac cultures.

Materials and Methods

Human HepatoPac cultures were acquired from Hepregen Corporation (Medford, MA) and prepared from three lots (unpooled) of cryoplateable hepatocytes (donor designations: RTM, 1, and 3). Alprazolam, atazanavir, atomoxetine, diazepam, diclofenac sodium salt, flecainide, glimepiride, lidocaine, meloxicam, midazolam, prednisolone, riluzole, risperidone, theophylline, tolbutamide, tomoxetine, Trypan Blue, voriconazole, (\pm)warfarin, and William's E media were purchased from Sigma-Aldrich (St. Louis, MO). A solution of penicillin (10,000 U/ml) and streptomycin (10 mg/ml), and GlutaMax (100X) were purchased from Gibco/Life Technologies (Grand Island, NY). A 20-donor customized pool of cryopreserved hepatocytes (LOT 000) was obtained from Celsis IVT (Baltimore, MD). Insulin, transferrin, and selenium (ITS+) premix cell culture supplement was acquired from BD Gentest (Franklin Lakes, NJ).

Cell Culture

HepatoPac. Plateable cryopreserved primary human hepatocytes were purchased from commercial vendors permitted to sell products derived from human organs procured in the United States by federally designated organ procurement organizations. The donors consisted of three female Caucasian donors (donor 1, donor RTM, and donor 3) aged 19, 61, and 54 years of age, respectively. Cryopreserved hepatocytes were thawed at 37°C for 90–120 seconds followed by dilution with 50 ml prewarmed Hepregen-customized and proprietary hepatocyte culture medium (HCM) (Hepregen Corporation). The cell suspension was spun at 100 g for 10 minutes. The supernatant was discarded, cells were resuspended in HCM, and viability was assessed using Trypan Blue dye exclusion (viability was at least 85%). Liver-derived nonparenchymal cells, as judged by their size (approximately 10 μ m in diameter) and morphology (nonpolygonal), were consistently found to be less than 1% in these preparations.

To create micropatterned cocultures in 96-well plates, a hepatocyte pattern was produced by seeding hepatocytes on collagen-patterned substrates (500 μ m island diameter, 1200 μ m center-to-center island spacing) that mediate selective cell adhesion (Khetani and Bhatia, 2008). The cells were washed with medium 4–6 hours later to remove unattached cells, leaving approximately 3,350 attached hepatocytes on 14 collagen-coated islands per well and incubated in HCM. The cell count per well was determined by microscopically counting cells on one island and multiplying this number by 14 islands in the well. Mouse embryonic fibroblasts (3T3-J2) were seeded 12–24 hours later to create cocultures. For cell maintenance, culture medium was replaced every 2 days (64 μ l per well). To determine accurate cell counts, human micropatterned co-cultures were created in

96-well plates as described above. After 18 to 24 hours in culture, hepatocyte islands (without fibroblasts) were fixed and then stained using H&E (hematoxylin and eosin) dye. Images of the hepatocyte islands were captured using 20X magnification. Cells were counted using the ImageJ software. Average count per island were determined by counting ≥ 5 islands per well from ≥ 5 wells/plate from ≥ 3 independent seedings. Total counts were calculated by multiplying the average count by the number of islands. Coefficient of variation was calculated from the standard deviation of cell counts and found to be $\pm 10\%$.

HepatoPac cultures were maintained in HCM with 10% serum for 7 days prior to treatment. Culture medium was changed every other day. HepatoPac cultures were washed with 100 μ l serum-free Dulbecco's modified Eagle's medium immediately prior to the addition of test substances. Incubations with the test compounds were conducted in protein-free Dulbecco's modified Eagle's medium specially formulated for HepatoPac cultures (Hepregen Corporation). Test compounds were added to duplicate wells at a final concentration of 0.1 μ M except for atomoxetine (0.5 μ M). At various time points (up to 168 hours), 192 μ l quench solution was added to terminate reactions. Quench solution contained acetonitrile/water (60:40, v/v), with 0.1% acetic acid and 0.1 μ M internal standard (nevirapine or 1-naphthyl- β -D-glucuronide). The well surface was scraped with the end of a pipette tip and the mixture of cell debris and solution was triturated three times before depositing into corresponding wells on a separate 750- μ l, 96-well plate. Incubations containing only mouse fibroblast cells served as controls.

Suspended Hepatocytes. The 20-donor pool of cryopreserved human hepatocytes was purchased from Celsis In Vitro Technologies (Baltimore, MD). The pool consisted of hepatocytes from 11 male and 9 female donors. The average age of the donors was 48 years and the ethnic constitution was 5 Hispanics and 15 Caucasians. Cryopreserved hepatocytes were reconstituted in warm William's E media containing 10% fetal bovine serum, 100 nM dexamethasone, 100 U penicillin, 0.1 mg streptomycin, and 1% ITS+ premix solution from BD Gentest. Viability of hepatocytes after reconstitution was 95%. Incubations in suspensions were carried out for 6 hours in William's E complete medium containing 100 nM dexamethasone, 100 U penicillin, 0.1 mg streptomycin, and 1% ITS premix solution in an atmosphere of 5% CO₂ and air, at 37°C. Test compounds were incubated with 50,000 hepatocytes in a 50- μ l volume. Control incubations were carried out in culture medium only.

Liquid Chromatography/Mass Spectrometry Analysis

The amount of parent compound was measured using multiple reaction monitoring on an ABSciex Qtrap 4000 mass spectrometer (Foster City, CA). The mass spectrometer was coupled to Agilent 1200 serial binary pumps (Santa Clara, CA). The aqueous and organic mobile phase consisted of 95:5 (v/v) water/acetonitrile and 95:5 (v/v) acetonitrile/water, respectively. The mobile phase contained 0.1% acetic acid. Samples were eluted through a Phenomenex Kinetex C₁₈ column (2.6 μ m, 100 Å, 50 \times 2.1 mm; Phenomenex Inc., Torrance, CA), a Phenomenex Synergi Polar-RP column (4 μ m, 80 Å, 150 \times 2.0 mm), or a Waters Atlantis dC18 column (5 μ m, 100 Å, 100 \times 2.1 mm; Waters Corporation, Milford, MA). The major cytochrome P450 (P450) isoforms responsible for the metabolism of test compounds and the multiple reaction monitoring transitions used for detection of each compound are listed in Table 1.

Data Analysis and Clearance Calculations

The percentage of the remaining test compound during the incubation was calculated by dividing the mass spectrometry peak area ratio at a certain incubation time to that at time zero. The elimination rate constant (k_{el}) was calculated from the absolute value of the slope derived from the natural logarithm of the percentage of drug remaining plotted against time. The depletion half-life of the test compound was calculated as in Eq. 1.

$$t_{1/2} = \frac{0.693}{k_{el}} \quad (1)$$

Statistical significance in turnover of the parent compound was determined by comparing the slope of the linear regression line from the samples to that of the controls [compound incubated with medium (suspended hepatocytes) or fibroblasts (HepatoPac)] using an *F* test (GraphPad Prism, version 5.02; GraphPad Software, Inc., La Jolla, CA). The in vitro half-lives were used to

TABLE 1
MRM transitions and major P450 isoforms responsible for metabolism of the 17 test compounds

Compound	MRM Transition (\pm mode)	P450 Isoform	HLM K_m	References for K_m Values
			μM	
Riluzole	235-166(+)	CYP1A2	30	Sanderink et al., 1997
Theophylline	181-124(+)		4.5	Sarkar et al., 1990
Lidocaine	235-86 (+)		1500	Wang et al., 1999a
Diclofenac	298-252(+)	CYP2C9	22	Carlile et al., 1999
Glimepiride	489-364(-)		0.56	Maekawa et al., 2009
Meloxicam	352-184(+)		14	Chesné et al., 1998
Tolbutamide	273-155(+)		14	Carlile et al., 1999
Warfarin	307-250(-)		0.29	Ngui et al., 2001
Voriconazole	350-281(+)	CYP2C19	8.1	Hyland et al., 2003
Diazepam	285-193(+)		180	Andersson et al., 1994
Flecainide	415-301(+)	CYP2D6	Unknown	Not available
Risperidone	411-191(+)		0.26	Yasui-Furukori et al., 2001
Atomoxetine	256-148(+)		2.2	Ring et al., 2002
Alprazolam	309-281(+)	CYP3A4	340	Gorski et al., 1999
Atazanavir	705-335(+)		Unknown	Not available
Midazolam	326-291(+)		7.5	Wang et al., 1999b
Prednisolone	361-343(+)		Unknown	Not available

HLM, human liver microsomes; MRM, multiple reaction monitoring.

calculate the intrinsic clearance (CL_{int}) using scaling factors (Eq. 2). The parameters used for scaling are shown in Table 2 (Davies and Morris, 1993; Obach et al., 1997).

$$CL_{int} = \frac{\ln(2)}{t_{1/2}} \times \frac{\text{liver weight}}{\text{standard body weight}} \times \frac{\text{incubation volume (ml)}}{\text{hepatocytes/well}} \times \frac{\text{hepatocytes}}{\text{gram of liver}} \quad (2)$$

The hepatic clearance (CL_h) was calculated from CL_{int} using the well stirred model (Eq. 3). CL_h was calculated for each compound with or without correcting for plasma protein binding (f_u) values that were obtained from the literature ($f_u = 1$ when plasma protein binding was not considered). To compare in vivo CL_{int} values with in vitro CL_{int} values, the in vivo CL_{int} was calculated by rearranging Eq. 3 into Eq. 4.

$$CL_h = \frac{Q \times f_u \times CL_{int}}{Q + (f_u \times CL_{int})} \quad (3)$$

Eq. 4:

$$CL_{int} = \frac{Q \times CL_h}{(Q - CL_h) \times f_u} \quad (4)$$

In vivo human nonrenal blood clearance values ($CL_{nonrenal}$) for the 17 studied compounds were calculated by taking into account the total plasma clearance values (CL), blood to plasma partition ratio (R_b), and renal excretion of each compound (Eq. 5), where CL is the total plasma clearance and F_{renal} is the fraction of drug excreted by renal elimination. The plasma and blood clearance values for these compounds are summarized in Table 3. In this manuscript, $CL_{nonrenal}$ was assumed equal to CL_h .

$$CL_{nonrenal} = \frac{CL}{R_b} (1 - F_{renal}) \quad (5)$$

TABLE 2
Scaling parameters to calculate CL_{int} or CL_h

Model	HepatoPac	Suspended Hepatocytes
Maximum incubation time, h (min)	168 (10,080)	6 (360)
Hepatocytes per well	3,350	50,000
Incubation volume (μ l)	64	50
In vivo (hepatocyte), (n per g liver)		120,000,000
Liver weight (g)		1800
Average body weight (kg)		70
Liver blood flow (ml/min per kg)		21

The overall percentage turnover of alprazolam, tolbutamide, and meloxicam in HepatoPac and suspended hepatocytes was calculated from the in vitro-derived k_{el} value using a one-phase elimination model (Eq. 6) instead of the percentage remaining at the final time point. This strategy ideally uses data from all of the time points to interpolate the value.

$$C_t = C_0 e^{-k_{el}t} \quad (6)$$

Monte Carlo Simulation

Monte Carlo simulations (MCSs) were conducted to model the relationship between percentage turnover and accuracy of CL_{int} prediction. GraphPad Prism software (version 5.02) was used to conduct the simulations. Simulations were performed for 1, 5, 15, 30, 45, and 60% depletion of the parent compound using a one-phase elimination model with the plateau constrained to zero. The percentage depletion values were converted to elimination rate constants using Eq. 1. The elimination rate constants were subsequently used for the simulations. Gaussian relative variability was defined with a standard deviation of 15%. For each turnover value, 1000 simulations were conducted and the resulting half-lives were converted to CL_{int} using Eq. 2 and the parameters from Table 3. The percentages of CL_{int} values from each simulation that were within 2-fold of the true CL_{int} value were plotted against the percentage of drug turnover. A hyperbolic equation (Eq. 7) was fitted to the data to obtain the percentage turnover value that was required to predict the corresponding CL_{int} within 2- or 3-fold in 95% of cases. In Eq. 7, "A" is the percentage of experiments predicting within 2- or 3-fold of the actual CL_{int} , D is the percentage of depletion of compound, and K_D is the percentage of depletion of the compound when 50% of the experiments predict within 2- or 3-fold of the actual CL_{int} (the values of slope factor h were 1.07 and 1.04 for within 2-fold and within 3-fold, respectively).

$$A = \frac{100 \times D^h}{K_D^h + D^h} \quad (7)$$

Results

Accuracy of Clearance Prediction Using HepatoPac. The predicted CL_h of 10 compounds with low in vivo $CL_{nonrenal}$ in humans (<5 ml/min per kg) and 7 compounds with intermediate in vivo $CL_{nonrenal}$ (>5 and <15 ml/min per kg) are shown in Table 4. CL_h values were calculated based on the parent depletion profiles in HepatoPac and were compared with the observed in vivo $CL_{nonrenal}$ values for the 17 compounds (Table 4). The comparison of mean predicted CL_h values are plotted against the observed $CL_{nonrenal}$ values (Fig. 1). Using the mean CL_h values for all three human donors and

TABLE 3
Human in vivo plasma and blood clearance values

Compound	PK Parameters from the Literature				Nonrenal Clearance	
	f_u	F_{renal}	R_b	CL	CL_p	CL_b
	<i>ml/min per kg</i>					
Alprazolam	0.29 ^a	0.20 ^a	0.78 ^b	0.59 ^c	0.47	0.61
Atazanavir	0.14 ^a	0.07 ^a	Unknown ^d	8.74 ^e	8.13	8.13
Atomoxetine ^f	0.013 ^a	0.01 ^a	0.55 ^e	3.92 ^h	3.88	7.05
Diazepam	0.015 ⁱ	<0.01 ^a	0.71 ^j	0.38 ^a	0.38	0.53
Diclofenac	0.005 ^a	<0.01 ^a	0.55 ^b	4.22 ^k	4.22	7.67
Flecainide	0.39 ^a	0.43 ^a	0.89 ^j	9.1 ^m	5.19	5.82
Glimepiride	0.005 ^a	<0.005 ^a	0.55 ^l	0.62 ^k	0.62	1.12
Lidocaine	0.3 ⁱ	0.02 ^l	0.84 ^l	9.2 ^l	9.02	10.7
Meloxicam	0.006 ^l	0.01 ^l	1.22 ^l	0.15 ^l	0.15	0.12
Midazolam	0.02 ^a	0.01 ^a	0.69 ^b	4.6 ⁿ	4.55	8.59
Riluzole	0.02 ^a	<0.01 ^a	1.7 ^l	3.52 ^a	3.48	2.05
Risperidone	0.11 ^a	0.03 ^a	0.67 ^l	3.56 ^a	3.46	5.16
Prednisolone	0.28 ^a	0.17 ^p	Unknown ^d	1.73 ^q	1.44	1.44
Theophylline	0.41 ^r	0.1 ^s	0.85 ^t	1.07 ^u	0.96	1.13
Tolbutamide	0.058 ^v	<0.01 ^b	0.55 ^b	0.17 ^v	0.2	0.31
Voriconazole	0.42 ^a	<0.02 ^a	Unknown ^d	3.80 ^a	3.80	3.80
Warfarin	0.01 ^a	<0.02 ^a	0.55 ^b	0.045 ^a	0.045	0.081

CL_b , blood clearance; CL_p , plasma clearance.

^aThummel et al., 2011.

^bObach, 1999.

^cSmith et al., 1984.

^dBlood to plasma ratio data were not available and are therefore assumed to be 1.

^ePiliero, 2004.

^fClearance value representative for extensive metabolizers.

^gSauer et al., 2003.

^hSauer et al., 2005.

ⁱThiessen et al., 1976.

^jMaguire et al., 1980.

^kWillis et al., 1979.

^lPaixão et al., 2010.

^mMcQuinn et al., 1988.

ⁿHeizmann et al., 1983.

^oAgabeyoğlu et al., 1979.

^pal-Habet and Rogers, 1989.

^qAl-Habet and Rogers, 1980.

^rKoysooko et al., 1974.

^sOgilvie, 1978.

^tEbden et al., 1986.

^uMitenko and Ogilvie, 1973.

^vWilner and Gardner, 1995.

including correction for plasma protein binding, HepatoPac cultures predicted within 2-fold of the in vivo $CL_{nonrenal}$ for 11 of 17 compounds [65% accuracy; 7 of 10 compounds with low clearance (70%) and 4 of 7 compounds with intermediate clearance (57%)]. Using 3-fold as the criterion for accuracy of prediction, 14 of 17 compounds were predicted [82%; 10 of 10 low clearance compounds (100%) and 4 of 7 intermediate clearance compounds (57%)]. When plasma protein binding was not included in the well stirred model, the accuracy of prediction was much lower. Only 2 of 17 (12%) compounds were predicted within 2-fold of in vivo $CL_{nonrenal}$ [0 of 10 compounds with low clearance and 2 of 7 (29%) compounds with intermediate clearance], and 7 of 17 (41%) compounds were predicted within 3-fold of in vivo $CL_{nonrenal}$ [0 of 10 compounds with low clearance and 7 of 7 (100%) compounds with intermediate clearance].

The accuracy of the prediction of CL_h was similar between donors with only donor 3 showing lower accuracy at 2-fold (47%) compared with the other two donors at 83% and 71% (Table 4). None of the compounds showed greater than 10% turnover in fibroblast-only control plates (data not shown). Representative parent compound depletion graphs for compounds with varying in vitro CL_{int} values (diazepam, theophylline, and atazanavir) are shown in Fig. 2 together with the fibroblast-only controls showing no turnover for up to 7 days.

Comparison of Metabolic Turnover of Alprazolam, Meloxicam, and Tolbutamide Using HepatoPac and Suspended Hepatocytes.

Incubations of HepatoPac cultures and suspended hepatocytes were compared for levels of turnover and clearance prediction. As expected, based on the larger number of hepatocytes in suspended cultures compared with HepatoPac, suspended hepatocytes generated a significantly greater percentage of turnover (not corrected for cell numbers) for alprazolam and tolbutamide. However, suspended hepatocytes did not show any turnover of meloxicam. Comparing the elimination rate constants using the full incubation times of 168 hours for HepatoPac and 6 hours for suspended hepatocytes, HepatoPac was found to provide 1.62- and 2.08-fold greater turnover (based on the average k_{el} from each donor) for alprazolam and tolbutamide, respectively, in comparison with suspended hepatocytes (Fig. 3). These differences will be donor dependent and a better comparison would be provided by using the same donor in both systems.

Appropriate scaling parameters were applied to determine intrinsic clearance and the well-stirred model was used to calculate the in vivo CL_h for each compound. After averaging the values from each donor, HepatoPac predicted tolbutamide CL_h to within 2-fold of the in vivo $CL_{nonrenal}$ and alprazolam and meloxicam CL_h to within 3-fold of the in vivo $CL_{nonrenal}$. The suspended hepatocyte incubations predicted CL_h of alprazolam to within 2-fold and tolbutamide to within 3-fold of $CL_{nonrenal}$. Since no turnover was observed for meloxicam with hepatocyte suspensions, CL_h is expected to be under-predicted by greater than 3-fold in suspended hepatocytes (Fig. 4).

MCSs were conducted with the goal of determining the minimum clearance value (CL_{int}) that both HepatoPac and suspended hepatocytes could predict. The simulation assumed bioanalytical variability of 15% of standard deviation (i.e., to be able to distinguish an extent of turnover from differences due to normal analytical variability). To achieve a success rate of 95% accurate prediction within 2- or 3-fold, the minimum percentages of parent depletion are 46.2 and 39.3%, respectively (Fig. 5). Using these values and the typical incubation conditions for HepatoPac and suspended hepatocytes as described in methods, the longest half-life that a compound can be considered to exhibit this extent of depletion is 191 or 233 hours in HepatoPac and 6.80 or 8.33 hours in suspended hepatocytes (within 2- and 3-fold of actual CL_{int} , respectively). These half-life values correspond to CL_{int} of 2.92 and 3.57 ml/min per kg in HepatoPac and 4.28 and 5.23 ml/min per kg in suspended hepatocytes (within 3- and 2-fold of actual CL_{int} , respectively), indicating a 1.46-fold greater sensitivity for HepatoPac.

Discussion

The ability to experimentally demonstrate turnover of slowly metabolized compounds in in vitro systems is dependent on enzyme concentration and incubation time. The lower limit of quantitation of CL_h can vary depending on the analytical system being used. An alternative strategy that has been applied is to "bin" the CL prediction into categories of low, medium, or high clearance, which circumvents the challenges of accurately assessing the in vitro metabolic rates for low CL compounds (Wilkinson and Shand, 1975; Lavé et al., 1997). Although this strategy provides broad categories for clearance values, there are some limitations, particularly for compounds that are slowly metabolized. During lead optimization and identification, for chemical series exhibiting slow metabolism, it is still necessary to be able to differentiate compounds based on their predicted clearance. In addition, therapeutic dose predictions, based on clearance and target therapeutic concentrations, are valuable in anticipating drug supply and possible formulation needs for higher-dose, less soluble compounds, and in

TABLE 4

Summary of CL_h predictions for 17 compounds using HepatoPac incubations from three donors									
Compound	In Vivo $CL_{non-renal}$	In Vitro CL_h from Four Donors (ml/min/kg)							
		Donor RTM		Donor 1		Donor 3		Mean \pm SD	
		f_u	w/o f_u	f_u	w/o f_u	f_u	w/o f_u	f_u	w/o f_u
Low Clearance ($CL_h < 5$ ml/min/kg)									
Warfarin	0.081	0.063	4.81	0.038	3.24	0.06	4.64	0.054 \pm 0.013	4.23 \pm 0.86
Meloxicam	0.12	0.073	7.36	0.028	3.79	0.018	2.63	0.040 \pm 0.030	4.59 \pm 2.46
Tolbutamide	0.31	0.57	6.82	0.34	3.57	0.37	4.95	0.43 \pm 0.12	5.11 \pm 1.63
Diazepam	0.53	0.32	10.6	0.28	10	0.22	8.6	0.27 \pm 0.05	9.75 \pm 1.03
Alprazolam	0.61	2.06	5.68	1.14	3.48	1.58	4.62	1.59 \pm 0.45	4.59 \pm 1.10
Glimipiride	1.12	0.87	18.8	0.53	17.6	0.35	16.3	0.58 \pm 0.26	17.6 \pm 1.3
Theophylline	1.13	1.62	3.42	1.67	3.65	2.14	4.55	1.81 \pm 0.29	3.87 \pm 0.60
Prednisolone	1.44	2.58	7.12	1.83	5.48	2.84	7.71	2.41 \pm 0.53	6.77 \pm 2.42
Riluzole	2.05	4.36	19.5	4.3	19.5	1.2	15.8	3.29 \pm 1.81	18.3 \pm 2.1
Voriconazole	3.8	7.66	11.8	10	14.4	9.59	14	9.1 \pm 1.3	13.4 \pm 1.4
% within 2-fold		80	0	80	0	40	0	70	0
% within 3-fold		90	0	90	0	80	0	100	0
Intermediate Clearance (5 ml/min/kg $< CL_h < 15$ ml/min/kg)									
Flecainide	5.82	1.88	4.11	1.39	3.22	0.91	2.19	1.39 \pm 0.48	3.18 \pm 0.96
Diclofenac	7.67	2.83	20.2	1.68	20.2	1.53	19.7	2.01 \pm 0.71	20.0 \pm 0.3
Risperidone	5.16	5.76	16.2	6.85	17.1	2.8	12.2	5.13 \pm 2.09	15.2 \pm 2.6
Atazanavir	8.13	14.2	19.7	12.5	19.2	10.9	18.6	12.5 \pm 1.7	19.1 \pm 0.5
Midazolam	8.59	N.D.	N.D.	6.1	20	6.09	19.8	6.1	19.9
Atomoxetine ^a	7.05	2.84	19.3	2.15	18.8	0.54	14.1	1.84 \pm 1.18	17.4 \pm 2.9
Lidocaine	10.7	9.25	15.2	8.15	14.2	6.8	12.9	8.07 \pm 1.23	14.1 \pm 1.13
% within 2-fold		50	29	57	29	57	29	57	29
% within 3-fold		83	83	57	86	57	100	57	100

^aThe in vivo clearance value reported for extensive metabolizers was used since the incidence of this phenotype is highest in the population. N.D., Not determined. Predicted CL_h values for both corrected ($CL_{h,w/o f_u}$) and not corrected ($CL_{h,w/f_u}$) for plasma protein binding were derived from the average of at least 2 replicates. Values that are highlighted in green are within 2-fold of the in vivo $CL_{non-renal}$; values that are highlighted in yellow are within 3-fold of the in vivo $CL_{non-renal}$; values that are highlighted in red are outside 3-fold of the in vivo $CL_{non-renal}$. Categorization of fold prediction was defined as follows for ± 2 -fold, $0.45 \leq \text{value} \leq 2.1$; ± 3 -fold, $0.325 \leq \text{value} \leq 3.1$.

setting starting doses and dose escalation schemes for the first time in human studies.

In hepatocyte and microsomal incubations, CL_{int} can be calculated from the formation of drug metabolites or disappearance of the drug. To calculate CL_{int} from drug metabolite formation, authentic metabolite standards and well defined CL pathways are required. These requirements may not be practical in drug discovery in which the major enzymes responsible for drug CL may not have been elucidated or the

authentic metabolites are not available to allow accurate quantitation of enzyme activity. Furthermore, compound-specific limitations, such as solubility, may not permit the determination of the required kinetic parameters, V_{max} and K_m . In early preclinical development, measuring the half-life of parent compound depletion is the easiest approach to determine in vitro metabolic CL_{int} . In addition, by adopting multiple substrate concentrations, the requirement that substrate concentrations are well below their K_m values, to be able to accurately determine CL_{int} values, can be assessed (Obach, 2001). Both strategies can benefit from higher protein or cell concentrations to increase the metabolic rates of

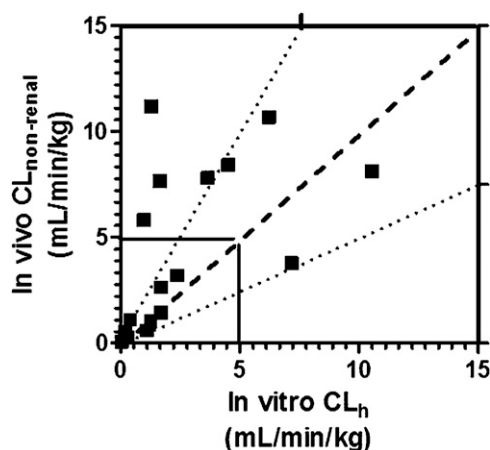


Fig. 1. Correlation between in vitro predicted CL_h from HepatoPac and observed in vivo $CL_{non-renal}$ for 17 compounds with low and intermediate clearance. The dashed line represents a perfect correlation. The dotted lines represent boundaries between a 2-fold underprediction and a 2-fold overprediction. The solid line marks the boundary between low and intermediate $CL_{non-renal}$ values.

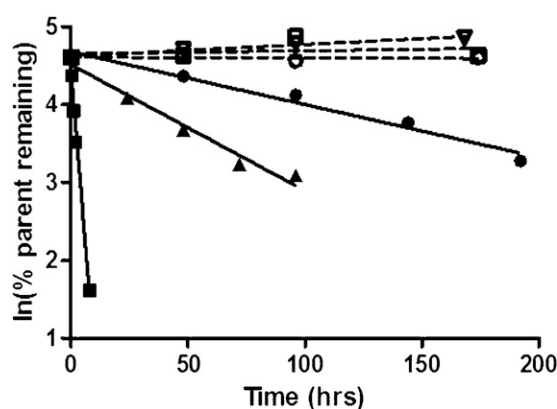


Fig. 2. Representative plots of parent compound depletion for theophylline (●), diazepam (▲), and atazanavir (■) (each point represents the average of two replicates). The corresponding open symbols represent fibroblast-only controls (two replicates per experiment).

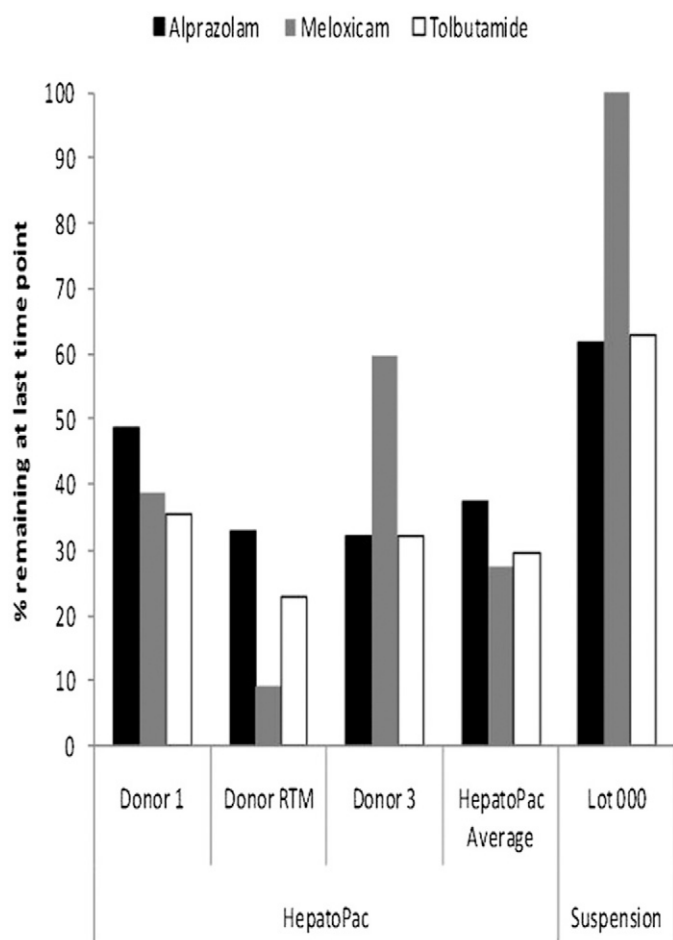


Fig. 3. Comparison of the percentage of parent compound remaining at the end of the incubation period in HepatoPac versus suspended hepatocyte incubations (alprazolam, meloxicam, tolbutamide).

slowly metabolized drugs. However, higher protein concentrations can result in higher nonspecific binding that can affect substrate availability to drug metabolizing enzymes, ultimately leading to an underestimation of CL_h (Obach, 2001). To circumvent the limited incubation time of microsomes, a relay method has shown promising results in which hepatocytes are replenished on multiple occasions to extend the overall incubation time (Di et al., 2012).

The loss of drug metabolizing enzyme function, which occurs after hepatocyte isolation and plating, reduces compound turnover and questions the ability of conventional long-term hepatocyte cultures to reflect in vivo metabolic capacity (Cross and Bayliss, 2000; Rodríguez-Antona et al., 2002). In the HepatoPac model, the heterotypic and homotypic interactions between human hepatocytes and mouse fibroblasts have been optimized through micropatterning in a multiwell plate format. This coculture has been shown to promote human hepatocyte morphology and phenotype, resulting in the maintenance of both viability and activity of hepatic drug metabolizing enzymes for an extended period with daily culture medium replenishment (Khetani and Bhatia, 2008). In our hands, P450 enzyme activity has been maintained consistently with human HepatoPac cultures, from different donors, typically for 2.5 weeks (in-house unpublished data). Furthermore, continuous drug incubations for up to 1 week in HepatoPac, without medium change, have been used to generate more complete, in vivo-like, metabolic profiles in comparison with conventional microsomal and hepatocyte incubations (Wang et al., 2010).

Using three low clearance drugs (alprazolam, meloxicam, and tolbutamide), a direct comparison of HepatoPac with human hepatocyte suspensions was conducted. From a theoretical perspective, focusing on the key differences between suspended hepatocytes and HepatoPac, in a 96-well format, there is a lower cell number per well for HepatoPac (3,350 hepatocytes/well versus 50,000 hepatocytes/well in hepatocyte suspensions). These differences correspond to a 15-fold lower source of drug metabolizing enzymes for HepatoPac. HepatoPac offers a longer incubation period (7 days for HepatoPac versus 6 hours for suspended hepatocytes), which translates to a 28-fold greater metabolic capacity. These comparisons obviously assume that all other factors between the two models are equivalent. It is important to note that a direct comparison of suspended hepatocytes and HepatoPac from the same human donor was not conducted due to the lack of availability of suspended hepatocytes from the same HepatoPac donors. Interdonor variability in drug metabolizing enzyme activity could also contribute to observed differences (see discussion below). In addition, the role of transporters in the clearance of drugs is becoming increasingly apparent (Shitara et al., 2013) and drug transporter expression and proper localization on hepatic membranes have been shown to differ between hepatocyte cultures and hepatocyte suspensions. For example, efflux transporters are internalized in suspensions (Bow et al., 2008) and uptake transporters have been reported to be preferentially depleted in sandwich-cultured hepatocytes (Tchparian et al., 2011).

With the aforementioned caveats and assumptions in mind, considering only the differences in cell number and the incubation period, HepatoPac is expected to have 1.5-fold higher metabolic capacity than suspended hepatocytes. Based on MCS, the lowest scaled CL_{int} values that could be accurately determined with HepatoPac are 2.92 ml/min per kg and 4.28 ml/min per kg for suspended hepatocytes. This difference in metabolic activity (1.46-fold) between HepatoPac and hepatocyte suspensions is roughly in line with the observed 1.62- and 2.08-fold higher turnover observed with alprazolam and tolbutamide, respectively, using HepatoPac compared with suspended hepatocytes (based on the average turnover using hepatocytes from three donors for HepatoPac; Fig. 3). In addition, meloxicam, which exhibited the slowest rate of depletion in HepatoPac, showed no perceptible depletion using suspended hepatocytes. Interestingly, the calculated $CL_{nonrenal}$ of meloxicam (0.089 ml/min per kg) is lower than that of alprazolam (0.61 ml/min per kg) or tolbutamide (0.31 ml/min per kg), but the calculated CL_{int} for meloxicam (15.6 ml/min per kg) was faster than alprazolam (2.21 ml/min per kg) and tolbutamide (9.45 ml/min per kg). This discrepancy is rooted in the well stirred model (Eq. 3), which predicts that the high plasma protein binding of meloxicam is a major factor determining its $CL_{nonrenal}$. As such, accurate CL_{int} should be obtained in in vitro incubations that do not contain plasma proteins. However, the underprediction of CL_{int} was still observed for meloxicam. The slow turnover of meloxicam in in vitro hepatocyte cultures such as hepatocyte suspensions or HepatoPac may also be limited by drug binding in the incubation. Drug binding to incubation components such as culture ware, fibroblasts, or hepatocytes was not evaluated in this study. Clearly, possible differences in specific P450 content between donors could also contribute to these differences. In comparison, Stringer et al. (2008) noted that perceptible turnover could only be observed with 3 of 24 reference drugs (13%) with low to intermediate in vivo CL_{int} (ranging from 1 to 10 mL/min/kg).

The accuracy of prediction for low clearance compounds (10 drugs evaluated), when including correction for plasma protein binding, was 100% within 3-fold of in vivo $CL_{nonrenal}$ and 70% within 2-fold. Although this is a limited data set, the results are encouraging in that HepatoPac allows for sufficient turnover of compounds for measurement of intrinsic clearance. In contrast, the effect of plasma protein

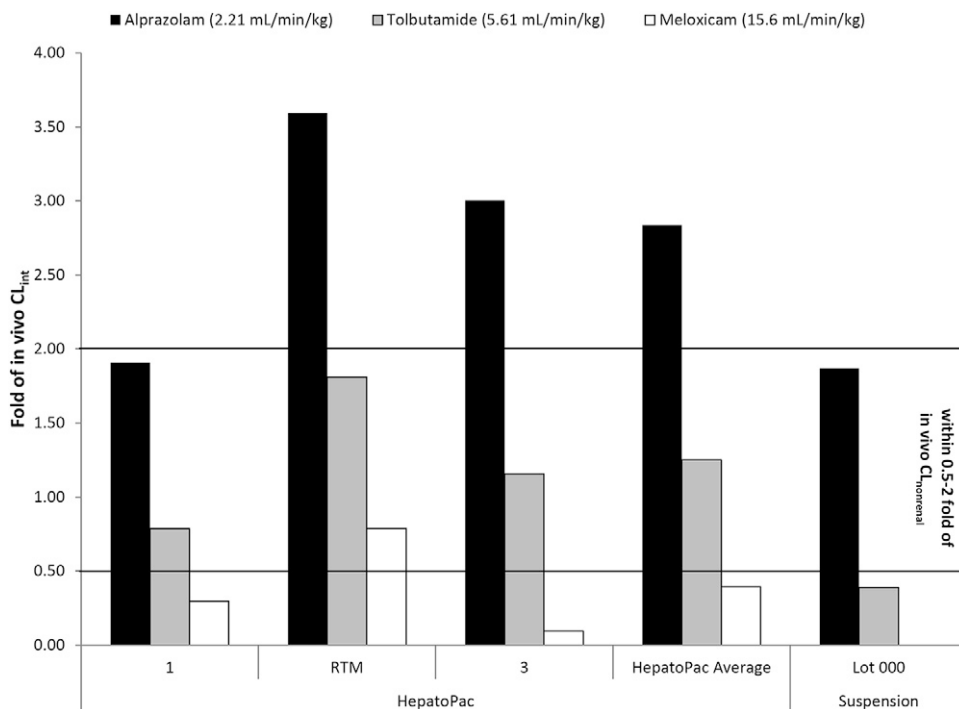


Fig. 4. Comparison of the accuracy of prediction of $CL_{nonrenal}$ between HepatoPac and suspended hepatocytes.

binding on the accuracy of $CL_{nonrenal}$ prediction for the intermediately cleared drugs was less clear as the difference in the accuracy of predictions with and without plasma protein binding was less extreme. A decrease in the percentage of compounds predicting $CL_{nonrenal}$ to within 2-fold (57 to 29%) was observed when ignoring plasma protein binding (i.e., setting the fraction of drug unbound to plasma protein to 1). However, when considering accuracy to within 3-fold, there was a marked improvement in accuracy from 57 to 100%.

The effect of plasma protein binding on the predictivity for intermediate clearance compounds requires a more extensive analysis, which is in progress. That said, a tendency to underpredict the clearance of intermediate to high clearance compounds when incorporating plasma protein binding, agrees with previous studies using conventional hepatocyte suspensions. A recently published PhRMA study made a recommendation to set $f_u=1$ when using hepatocytes. In this study the majority of compounds (6 of 9) were intermediate to high clearance (Ring et al., 2011). In a retrospective analysis of in vitro studies using hepatocytes to predict the in vivo CL of 89 compounds, a bias to more greatly underpredict the intrinsic clearance of rapidly metabolized

compounds was described using suspended hepatocytes (Hallifax et al., 2010). In addition, the authors found that the accuracy of prediction was affected by drug binding in the blood (including plasma proteins) such that accuracy improved when blood binding was low. The bias to more accurately predict the CL_h of high clearance compounds when plasma protein binding is not accounted for is consistent with the trend observed in this study whereby for the intermediate clearance compounds, the exclusion of plasma protein binding does not adversely affect the overall accuracy of prediction. Several recent mathematical models that incorporate factors such as plasma albumin to liver albumin ratio and drug ionization may improve the ability to predict hepatocyte incubations, including HepatoPac, by reducing average prediction bias, but may not entirely eliminate it (Berezhkovskiy, 2011; Hallifax and Houston, 2012; Poulin et al., 2012).

The variability in calculated clearance values between hepatocytes from different donors indicates that donor-dependent variation in drug metabolizing activity (Shimada et al., 1994) is retained in plated or suspended hepatocytes (Ponsoda et al., 2001). Differences in predicted clearance values were observed for the three donors in this study, which reiterates one of the challenges with using hepatocytes for prediction of

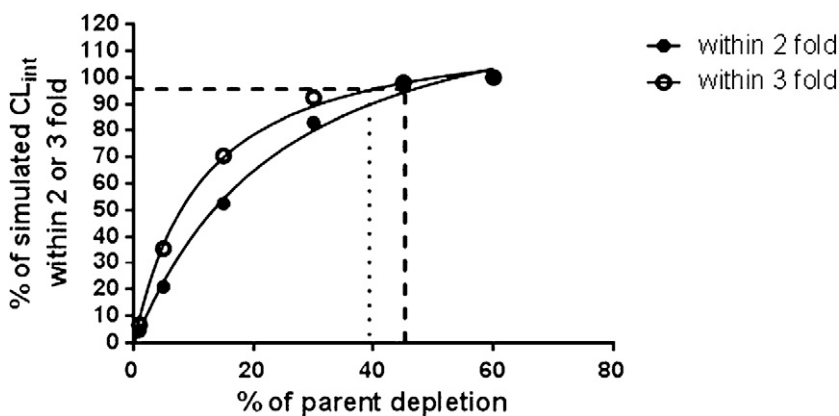


Fig. 5. Universal relationship describing the percentage turnover of parent required to achieve an accurate prediction of CL_{int} . The CL_{int} values from 1000 simulations were obtained using the one-phase decay model and a 15% of standard deviation to represent bioanalytical or biologic variability. Turnover required to achieve results from 95% of experiments within 2-fold of the actual CL_{int} is represented by a dashed line, and within 3-fold is represented by a dotted line.

human clearance, that of interindividual variability in drug metabolizing enzymes. To mitigate these differences, suspended hepatocytes can be pooled, with the goal of generating an “average” human, similar to combining human liver microsomes from different donors. However, differences in plating efficiencies add a complexity to this process for HepatoPac and other plated hepatocyte cultures. An obvious contributor to interindividual variability is the polymorphic expression of P450s (e.g., with drugs metabolized by CYP2C9, CYP2C19, and/or CYP2D6). In this study, there was a trend for donor RTM to clear CYP2C9 substrates, diclofenac, glimepiride, and meloxicam, faster than donor 1 or donor 3. Clearance predictions using hepatocytes should characterize human donors and select, where possible, hepatocyte lots reflecting average enzyme activity for the major P450 isoforms or, when the contributing drug metabolizing enzyme(s) are known, correct CL for differences in enzyme activity, which can potentially be done by relative activity factors (Venkatakrisnan et al., 2000). Drug metabolizing enzyme polymorphisms or donor-dependent differences in response to culture conditions (Waring et al., 2003; Chen et al., 2011) have not been evaluated in this analysis but are being considered in future studies.

In summary, the extended drug incubation period with HepatoPac allowed for detectable metabolic turnover of low CL drugs. As a result, a high accuracy of prediction was achieved with low CL drugs. The ability of HepatoPac to accurately predict intermediate and high CL drugs is being investigated. The extended functionality of hepatocytes in HepatoPac suggests that additional important factors such as drug transporters, which can play a crucial role in drug clearance (Shitara et al., 2006), may also be appropriately represented in vitro. This is also a topic of further investigation.

Authorship Contributions

Participated in research design: Chan, Yu, Moore, Khetani, Tweedie.
Conducted experiments: Chan, Yu, Moore.
Contributed new reagents or analytic tools: Chan, Yu, Moore.
Performed data analysis: Chan, Yu.
Wrote or contributed to the writing of the manuscript: Chan, Yu, Khetani, Tweedie.

References

Agabeyoğlu IT, Bergstrom RF, Gillespie WR, Wagner JG, and Kay DR (1979) Plasma protein binding of prednisolone in normal volunteers and arthritic patients. *Eur J Clin Pharmacol* **16**: 399–404.

Al-Habet S and Rogers HJ (1980) Pharmacokinetics of intravenous and oral prednisolone. *Br J Clin Pharmacol* **10**:503–508.

al-Habet SM and Rogers HJ (1989) Urinary excretion of prednisolone following intravenous administration in humans. *J Clin Pharmacol* **29**:922–927.

Andersson T, Miners JO, Veronese ME, and Birkett DJ (1994) Diazepam metabolism by human liver microsomes is mediated by both S-mephenytoin hydroxylase and CYP3A isoforms. *Br J Clin Pharmacol* **38**:131–137.

Andersson TB, Bredberg E, Ericsson H, and Sjöberg H (2004) An evaluation of the in vitro metabolism data for predicting the clearance and drug-drug interaction potential of CYP2C9 substrates. *Drug Metab Dispos* **32**:715–721.

Berezhkovskiy LM (2011) The corrected traditional equations for calculation of hepatic clearance that account for the difference in drug ionization in extracellular and intracellular tissue water and the corresponding corrected PBPK equation. *J Pharm Sci* **100**:1167–1183.

Bow DA, Perry JL, Miller DS, Pritchard JB, and Brouwer KL (2008) Localization of P-gp (Abcb1) and Mrp2 (Abcc2) in freshly isolated rat hepatocytes. *Drug Metab Dispos* **36**: 198–202.

Brandon EF, Raap CD, Meijerman I, Beijnen JH, and Schellens JH (2003) An update on in vitro test methods in human hepatic drug biotransformation research: pros and cons. *Toxicol Appl Pharmacol* **189**:233–246.

Brown HS, Griffin M, and Houston JB (2007) Evaluation of cryopreserved human hepatocytes as an alternative in vitro system to microsomes for the prediction of metabolic clearance. *Drug Metab Dispos* **35**:293–301.

Carlile DJ, Hakooz N, Bayliss MK, and Houston JB (1999) Microsomal prediction of in vivo clearance of CYP2C9 substrates in humans. *Br J Clin Pharmacol* **47**:625–635.

Carlile DJ, Zomorodi K, and Houston JB (1997) Scaling factors to relate drug metabolic clearance in hepatic microsomes, isolated hepatocytes, and the intact liver: studies with induced livers involving diazepam. *Drug Metab Dispos* **25**:903–911.

Chen Q, Zhang T, Wang JF, and Wei DQ (2011) Advances in human cytochrome p450 and personalized medicine. *Curr Drug Metab* **12**:436–444.

Chesné C, Guyomard C, Guillouzo A, Schmid J, Ludwig E, and Sauter T (1998) Metabolism of Meloxicam in human liver involves cytochromes P4502C9 and 3A4. *Xenobiotica* **28**:1–13.

Cross DM and Bayliss MK (2000) A commentary on the use of hepatocytes in drug metabolism studies during drug discovery and development. *Drug Metab Rev* **32**: 219–240.

Davies B and Morris T (1993) Physiological parameters in laboratory animals and humans. *Pharm Res* **10**:1093–1095.

Di L, Trapa P, Obach RS, Atkinson K, Bi YA, Wolford AC, Tan B, McDonald TS, Lai Y, and Tremaine LM (2012) A novel relay method for determining low-clearance values. *Drug Metab Dispos* **40**:1860–1865.

Ebden P, Banks J, Peel T, Buss DC, Routledge PA, and Spragg BP (1986) The disposition of theophylline in blood in chronic obstructive lung disease. *Ther Drug Monit* **8**:424–426.

Elaut G, Papeleu P, Vinken M, Henkens T, Snyckers S, Vanhaecke T, and Rogiers V (2006) Hepatocytes in suspension. *Methods Mol Biol* **320**:255–263.

Fagerholm U (2007) Prediction of human pharmacokinetics—evaluation of methods for prediction of hepatic metabolic clearance. *J Pharm Pharmacol* **59**:803–828.

Gorski JC, Jones DR, Hamman MA, Wrighton SA, and Hall SD (1999) Biotransformation of alprazolam by members of the human cytochrome P4503A subfamily. *Xenobiotica* **29**: 931–944.

Hallifax D, Foster JA, and Houston JB (2010) Prediction of human metabolic clearance from in vitro systems: retrospective analysis and prospective view. *Pharm Res* **27**:2150–2161.

Hallifax D and Houston JB (2012) Evaluation of hepatic clearance prediction using in vitro data: emphasis on fraction unbound in plasma and drug ionisation using a database of 107 drugs. *J Pharm Sci* **101**:2645–2652.

Heizmann P, Eckert M, and Ziegler WH (1983) Pharmacokinetics and bioavailability of midazolam in man. *Br J Clin Pharmacol* **16** (Suppl 1):43S–49S.

Hyland R, Jones BC, and Smith DA (2003) Identification of the cytochrome P450 enzymes involved in the N-oxidation of voriconazole. *Drug Metab Dispos* **31**:540–547.

Iwatsubo T, Hirota N, Ooie T, Suzuki H, Shimada N, Chiba K, Ishizaki T, Green CE, Tyson CA, and Sugiyama Y (1997) Prediction of in vivo drug metabolism in the human liver from in vitro metabolism data. *Pharmacol Ther* **73**:147–171.

Khetani SR and Bhatia SN (2008) Microscale culture of human liver cells for drug development. *Nat Biotechnol* **26**:120–126.

Kola I and Landis J (2004) Can the pharmaceutical industry reduce attrition rates? *Nat Rev Drug Discov* **3**:711–715.

Koysooko R, Ellis EF, and Levy G (1974) Relationship between theophylline concentration in plasma and saliva of man. *Clin Pharmacol Ther* **15**:454–460.

Lau YY, Sapidou E, Cui X, White RE, and Cheng KC (2002) Development of a novel in vitro model to predict hepatic clearance using fresh, cryopreserved, and sandwich-cultured hepatocytes. *Drug Metab Dispos* **30**:1446–1454.

Lavé T, Dupin S, Schmitt C, Valles B, Ubeaud G, Chou RC, Jaecq D, and Coassolo P (1997) The use of human hepatocytes to select compounds based on their expected hepatic extraction ratios in humans. *Pharm Res* **14**:152–155.

Maekawa K, Harakawa N, Sugiyama E, Tohkin M, Kim SR, Kaniwa N, Katori N, Hasegawa R, Yasuda K, Kamide K, et al. (2009) Substrate-dependent functional alterations of seven CYP2C9 variants found in Japanese subjects. *Drug Metab Dispos* **37**:1895–1903.

Maguire KP, Burrows GD, Norman TR, and Scoggins BA (1980) Blood/plasma distribution ratios of psychotropic drugs. *Clin Chem* **26**:1624–1625.

McQuinn RL, Pentikäinen PJ, Chang SF, and Conard GJ (1988) Pharmacokinetics of flecainide in patients with cirrhosis of the liver. *Clin Pharmacol Ther* **44**:566–572.

Mitenko PA and Ogilvie RI (1973) Pharmacokinetics of intravenous theophylline. *Clin Pharmacol Ther* **14**:509–513.

Ngui JS, Chen Q, Shou M, Wang RW, Stearns RA, Baillie TA, and Tang W (2001) In vitro stimulation of warfarin metabolism by quinidine: increases in the formation of 4'- and 10-hydroxywarfarin. *Drug Metab Dispos* **29**:877–886.

Obach RS (1999) Prediction of human clearance of twenty-nine drugs from hepatic microsomal intrinsic clearance data: An examination of in vitro half-life approach and nonspecific binding to microsomes. *Drug Metab Dispos* **27**:1350–1359.

Obach RS (2001) The prediction of human clearance from hepatic microsomal metabolism data. *Curr Opin Drug Discov Devel* **4**:36–44.

Obach RS, Baxter JG, Liston TE, Silber BM, Jones BC, MacIntyre F, Rance DJ, and Wastall P (1997) The prediction of human pharmacokinetic parameters from preclinical and in vitro metabolism data. *J Pharmacol Exp Ther* **283**:46–58.

Ogilvie RI (1978) Clinical pharmacokinetics of theophylline. *Clin Pharmacokinetics* **3**:267–293.

Paixão P, Gouveia LF, and Morais JA (2010) Prediction of the in vitro intrinsic clearance determined in suspensions of human hepatocytes by using artificial neural networks. *Eur J Pharm Sci* **39**:310–321.

Pilero PJ (2004) Atazanavir: A novel once-daily protease inhibitor. *Drugs Today (Barc)* **40**:901–912.

Ponsoda X, Pareja E, Gómez-Lechón MJ, Fabra R, Carrasco E, Trullenque R, and Castell JV (2001) Drug biotransformation by human hepatocytes. In vitro/in vivo metabolism by cells from the same donor. *J Hepatol* **34**:19–25.

Poulin P, Kenny JR, Hop CE, and Haddad S (2012) In vitro-in vivo extrapolation of clearance: modeling hepatic metabolic clearance of highly bound drugs and comparative assessment with existing calculation methods. *J Pharm Sci* **101**:838–851.

Riley RJ, McGinnity DF, and Austin RP (2005) A unified model for predicting human hepatic, metabolic clearance from in vitro intrinsic clearance data in hepatocytes and microsomes. *Drug Metab Dispos* **33**:1304–1311.

Ring BJ, Chien JY, Adkison KK, Jones HM, Rowland M, Jones RD, Yates JW, Ku MS, Gibson CR, He H, et al. (2011) PhRMA CPCDC initiative on predictive models of human pharmacokinetics, part 3: Comparative assessment of prediction methods of human clearance. *J Pharm Sci* **100**:4090–4110.

Ring BJ, Gillespie JS, Eckstein JA, and Wrighton SA (2002) Identification of the human cytochromes P450 responsible for atomoxetine metabolism. *Drug Metab Dispos* **30**:319–323.

Rodríguez-Antona C, Donato MT, Boobis A, Edwards RJ, Watts PS, Castell JV, and Gómez-Lechón MJ (2002) Cytochrome P450 expression in human hepatocytes and hepatoma cell lines: molecular mechanisms that determine lower expression in cultured cells. *Xenobiotica* **32**:505–520.

Sanderink GJ, Bourmike B, Stevens J, Petry M, and Martinet M (1997) Involvement of human CYP1A isoenzymes in the metabolism and drug interactions of riluzole in vitro. *J Pharmacol Exp Ther* **282**:1465–1472.

Sarkar M, Polk RE, Guzelian PS, Hunt C, and Karnes HT (1990) In vitro effect of fluoroquinolones on theophylline metabolism in human liver microsomes. *Antimicrob Agents Chemother* **34**:594–599.

- Sauer JM, Ponsler GD, Mattiuz EL, Long AJ, Witcher JW, Thomasson HR, and Desante KA (2003) Disposition and metabolic fate of atomoxetine hydrochloride: the role of CYP2D6 in human disposition and metabolism. *Drug Metab Dispos* **31**:98–107.
- Sauer JM, Ring BJ, and Witcher JW (2005) Clinical pharmacokinetics of atomoxetine. *Clin Pharmacokinet* **44**:571–590.
- Shimada T, Yamazaki H, Mimura M, Inui Y, and Guengerich FP (1994) Interindividual variations in human liver cytochrome P-450 enzymes involved in the oxidation of drugs, carcinogens and toxic chemicals: studies with liver microsomes of 30 Japanese and 30 Caucasians. *J Pharmacol Exp Ther* **270**:414–423.
- Shitara Y, Horie T, and Sugiyama Y (2006) Transporters as a determinant of drug clearance and tissue distribution. *Eur J Pharm Sci* **27**:425–446.
- Shitara Y, Maeda K, Ikejiri K, Yoshida K, Horie T, and Sugiyama Y (2013) Clinical significance of organic anion transporting polypeptides (OATPs) in drug disposition: their roles in hepatic clearance and intestinal absorption. *Biopharm Drug Dispos* **34**:45–78.
- Smith RB, Kroboth PD, Vanderlugt JT, Phillips JP, and Juhl RP (1984) Pharmacokinetics and pharmacodynamics of alprazolam after oral and IV administration. *Psychopharmacology (Berl)* **84**:452–456.
- Stringer R, Nicklin PL, and Houston JB (2008) Reliability of human cryopreserved hepatocytes and liver microsomes as in vitro systems to predict metabolic clearance. *Xenobiotica* **38**:1313–1329.
- Tchapanian EH, Houghton JS, Uyeda C, Grillo MP, and Jin L (2011) Effect of culture time on the basal expression levels of drug transporters in sandwich-cultured primary rat hepatocytes. *Drug Metab Dispos* **39**:2387–2394.
- Thiessen JJ, Sellers EM, Denbeigh P, and Dolman L (1976) Plasma protein binding of diazepam and tolbutamide in chronic alcoholics. *J Clin Pharmacol* **16**:345–351.
- Thummel KE, Shen DD, and Isoherranen N (2011) *Goodman and Gilman's Pharmacological Basis of Therapeutics*, The McGraw Hill Companies, New York.
- Venkatakrisnan K, von Moltke LL, Court MH, Harmatz JS, Crespi CL, and Greenblatt DJ (2000) Comparison between cytochrome P450 (CYP) content and relative activity approaches to scaling from cDNA-expressed CYPs to human liver microsomes: ratios of accessory proteins as sources of discrepancies between the approaches. *Drug Metab Dispos* **28**:1493–1504.
- Wang JS, Backman JT, Wen X, Taavitsainen P, Neuvonen PJ, and Kivistö KT (1999a) Fluvoxamine is a more potent inhibitor of lidocaine metabolism than ketoconazole and erythromycin in vitro. *Pharmacol Toxicol* **85**:201–205.
- Wang JS, Wen X, Backman JT, Taavitsainen P, Neuvonen PJ, and Kivistö KT (1999b) Midazolam alpha-hydroxylation by human liver microsomes in vitro: inhibition by calcium channel blockers, itraconazole and ketoconazole. *Pharmacol Toxicol* **85**:157–161.
- Wang WW, Khetani SR, Krzyzewski S, Duignan DB, and Obach RS (2010) Assessment of a micropatterned hepatocyte coculture system to generate major human excretory and circulating drug metabolites. *Drug Metab Dispos* **38**:1900–1905.
- Waring JF, Ciurlionis R, Jolly RA, Heindel M, Gagne G, Fagerland JA, and Ulrich RG (2003) Isolated human hepatocytes in culture display markedly different gene expression patterns depending on attachment status. *Toxicol In Vitro* **17**:693–701.
- Wienkers LC and Heath TG (2005) Predicting in vivo drug interactions from in vitro drug discovery data. *Nat Rev Drug Discov* **4**:825–833.
- Wilkinson GR and Shand DG (1975) Commentary: a physiological approach to hepatic drug clearance. *Clin Pharmacol Ther* **18**:377–390.
- Willis JV, Kendall MJ, Flinn RM, Thornhill DP, and Welling PG (1979) The pharmacokinetics of diclofenac sodium following intravenous and oral administration. *Eur J Clin Pharmacol* **16**:405–410.
- Wilner KD and Gardner MJ (1995) Tenidap sodium does not alter the clearance or plasma protein binding of tolbutamide in healthy male volunteers. *Br J Clin Pharmacol* **39** (Suppl 1):39S–42S.
- Yasui-Furukori N, Hidestrand M, Spina E, Facciola G, Scordo MG, and Tybring G (2001) Different enantioselective 9-hydroxylation of risperidone by the two human CYP2D6 and CYP3A4 enzymes. *Drug Metab Dispos* **29**:1263–1268.

Address correspondence to: Hongbin Yu, Department of Drug Metabolism and Pharmacokinetics, Boehringer Ingelheim Pharmaceuticals, Inc., 900 Ridgebury Rd., Ridgefield, CT 06877. E-mail: hongbin.yu@boehringer-ingelheim.com

Correction

Chan, Yu, Moore, Khetani and Tweedie, Meeting the Challenge of Predicting Hepatic Clearance of Compounds Slowly Metabolized by Cytochrome P450 Using a Novel Hepatocyte Model, HepatoPac

In the above article [Chan TS, Yu H, Moore A, Khetani SR, and Tweedie D (2013) *Drug Metab Dispos* **41**: 2024–2032, <https://doi.org/10.1124/dmd.113.053397>], subsequent to publication of the article, the authors were made aware of an error in the number of cells per well which affects calculation of clearance parameters. In recalculating these parameters, the overall conclusions of the study have not changed. The text, Table 4, and Figure 4 have been revised to reflect the changes in the clearance values. Due to the number of locations in the article where the results needed to be updated to represent the corrected parameters, this corrected version is being published. A correction to correct spelling of author Salman R. Khetani was published in January 2014. The HTML and PDF versions of the article have been updated.