

#DMD/2017/078980

**Identification of Galeterone and Abiraterone as Inhibitors of
Dehydroepiandrosterone Sulfonation Catalyzed by Human Hepatic Cytosol,
SULT2A1, SULT2B1b, and SULT1E1**

Caleb Keng Yan Yip, Sumit Bansal, Siew Ying Wong, Aik Jiang Lau

*Department of Pharmacy, Faculty of Science, National University of Singapore,
Singapore (C.K.Y.Y., S.B., S.Y.W., A.J.L.); Department of Pharmacology, Yong Loo Lin
School of Medicine, National University of Singapore, Singapore (A.J.L.)*

#DMD/2017/078980

Running Title

Inhibition of DHEA Sulfonation by Galeterone and Abiraterone

Corresponding author:

Dr. Aik Jiang Lau

Department of Pharmacy, Faculty of Science, National University of Singapore,

18 Science Drive 4, Singapore 117543.

Tel.: 65-6601 3470, Fax: 65-6779 1554; E-mail: aikjiang.lau@nus.edu.sg

Number of text pages:	38
Number of tables:	2
Number of figures:	10
Number of references	58
Number of words in Abstract (maximum of 250):	240
Number of words in Introduction (maximum of 750):	607
Number of words in Discussion (maximum of 1500):	1342

ABBREVIATIONS: DHEA, dehydroepiandrosterone; DHEA-S, dehydroepiandrosterone sulfate; DMSO, dimethyl sulfoxide; IC₅₀, half-maximal inhibitory concentration; K_i , inhibition constant or equilibrium dissociation constant for the enzyme-inhibitor complex; K_m , Michaelis-Menten constant; LLOQ, lower limit of quantification; MS, mass spectrometry; PAPS, 3'-phosphoadenosine 5'-phosphosulfate; S_{50} , substrate concentration at half-maximal activity; SULT, sulfotransferase; UPLC, ultra-high performance liquid chromatography; V_{max} , maximum velocity.

#DMD/2017/078980

ABSTRACT

Galeterone and abiraterone acetate are anti-androgens developed for the treatment of metastatic castration-resistant prostate cancer. In the present study, we investigated the effect of these drugs on dehydroepiandrosterone (DHEA) sulfonation catalyzed by human liver and intestinal cytosols and human recombinant sulfotransferase enzymes (SULT2A1, SULT2B1b, and SULT2E1), and compared their effects to those of other anti-androgens (cyproterone acetate, spironolactone, and danazol). Each of these chemicals (10 μ M) inhibited DHEA sulfonation catalyzed by human liver and intestinal cytosols. Enzyme kinetic analysis showed that galeterone and abiraterone acetate inhibited human liver cytosolic DHEA sulfonation with apparent K_i values at submicromolar concentrations, whereas cyproterone acetate, spironolactone, and danazol inhibited it with apparent K_i values at low micromolar concentrations. The temporal pattern of abiraterone formation and abiraterone acetate depletion suggested that the metabolite abiraterone, not the parent drug abiraterone acetate, was responsible for the inhibition of DHEA sulfonation in incubations containing human liver cytosol and abiraterone acetate. Consistent with this proposal, similar apparent K_i values were obtained, regardless of whether abiraterone or abiraterone acetate was added to the enzymatic incubation. Abiraterone was more effective than abiraterone acetate in inhibiting DHEA sulfonation when catalyzed by human recombinant SULT2A1 or SULT2B1b. In conclusion, galeterone and abiraterone are novel inhibitors of DHEA sulfonation, as determined in enzymatic incubations containing human tissue cytosol (liver or intestinal) or human recombinant SULT enzyme (SULT2A1, SULT2B1b, or SULT1E1). Galeterone and abiraterone may have implications in drug-drug interactions and biosynthesis of steroid hormones.

#DMD/2017/078980

Introduction

Cytosolic sulfotransferases (SULTs) are a family of Phase II drug-metabolizing enzymes that sulfonate various endogenous and xenobiotic substrates *via* the transfer of a sulfuryl group from the co-substrate 3'-phosphoadenosine-5'-phosphosulfate (PAPS) (James and Ambadapadi, 2013; Wang et al., 2014). The human SULT2 hydroxysteroid sulfotransferase family consists of three isoforms, SULT2A1, SULT2B1a, and SULT2B1b (Blanchard et al., 2004). SULT2A1 is expressed predominantly in the liver and adrenal glands, but also in the small intestines and lungs (Riches et al., 2009). In contrast, SULT2B1a and SULT2B1b mRNA have been shown to be preferentially expressed in extrahepatic tissues, including prostate, uterus, ovary, and placenta (Her et al., 1998; Geese and Raftogianis, 2001; Javitt et al., 2001; Falany and Rohn-Glowacki, 2013). Although SULT2B1b protein is expressed in various tissues, SULT2B1a protein has not been detected in tissues (Falany and Rohn-Glowacki, 2013). Endogenous substrates of SULT2A1 include dehydroepiandrosterone (DHEA), pregnenolone, androsterone, and bile acids (Falany et al., 1989; Radomska et al., 1990). Although DHEA is sulfonated to dehydroepiandrosterone sulfate (DHEA-S) by SULT2A1 in human liver, it is also sulfonated by SULT2B1a, SULT2B1b (Meloche and Falany, 2001; Geese and Raftogianis, 2001), and SULT1E1 (Falany et al., 1995) in extra-hepatic tissues such as prostate (Her et al., 1998; Geese and Raftogianis, 2001; Nakamura et al., 2006; Takase et al., 2007). Sulfotransferases are involved not only in detoxification of drugs and other chemicals (e.g. environment toxicants) (Liu et al., 2006; James and Ambadapadi, 2013), but also bioactivation of certain drugs to give toxic reactive intermediates (Shibutani et al., 1998; Glatt, 2000). Inhibition of sulfotransferases by xenobiotics may lead to drug-drug interactions and perturbation in homeostasis of endogenous substances, such as sex steroids (Wang and James, 2006).

#DMD/2017/078980

For advanced or metastatic prostate cancer, one of the treatment options is androgen deprivation therapy by chemical castration using anti-androgen drugs (Thompson et al., 2007), which may be categorized as steroidal and non-steroidal compounds (Chen et al., 2009). Among the steroidal members, the older drugs include cyproterone acetate, spironolactone, and danazol, whereas the newer drugs include abiraterone acetate and galeterone (Fig. 1). Abiraterone acetate, which was approved by U.S. Food and Drug Administration in 2012 for the treatment of metastatic castration-resistant prostate cancer, is the first approved inhibitor of CYP17A1 that also antagonizes androgen receptor and inhibits 3 β -hydroxysteroid dehydrogenase (Beckett et al., 2012). Structurally similar to abiraterone (Fig. 1), galeterone was developed as a multi-targeting agent that targets multiple points of the androgen biosynthesis and androgen receptor signaling pathway, including CYP17A1 inhibition, androgen receptor antagonism, and degradation of androgen receptor protein, for the treatment of metastatic castration-resistant prostate cancer (Montgomery et al., 2016). Currently, it is not known whether galeterone and abiraterone regulate androgen homeostasis by modulating sulfotransferases that deactivate DHEA, which is an endogenous multifunctional hormone with many biological functions, including neuroprotection (Maninger et al., 2009), anti-aging (Yen, 2001), and as a precursor in the biosynthesis of steroidal androgens, namely androstenedione, testosterone, and dihydrotestosterone (Prough et al., 2016).

In the present study, we investigated the effect of galeterone and abiraterone acetate on DHEA sulfonation catalyzed by human tissue cytosol and human recombinant SULT enzymes (namely SULT2A1, SULT2B1b, and SULT1E1), and compared the effect with those of other anti-androgens (cyproterone acetate, spironolactone, and danazol) (Fig. 1). To provide insight into the structural elements involved in the inhibition of DHEA sulfonation by anti-androgens, we compared the effect of abiraterone acetate (prodrug) versus abiraterone (pharmacologically

#DMD/2017/078980

active metabolite) and the effect of cyproterone acetate (pharmacologically active) versus cyproterone (metabolite) on DHEA sulfonation. Our findings indicate that galeterone and abiraterone are novel inhibitors of DHEA sulfonation, as assessed in enzymatic assays with human liver and intestinal cytosol and human recombinant SULT2A1, SULT2B1b, and SULT1E1.

#DMD/2017/078980

Materials and Methods

Chemicals and Reagents. Galeterone, spironolactone, danazol, amoxicillin, quercetin, cortisol (hydrocortisone), 3'-phosphoadenosine 5'-phosphosulfate lithium salt hydrate (PAPS; purity of $\geq 60\%$), magnesium chloride hexahydrate (MgCl_2), and dimethyl sulfoxide (DMSO) were bought from Sigma-Aldrich Pte. Ltd. (Singapore), and 3'-phosphoadenosine 5'-phosphosulfate solution [PAPS; supplied in 25 mM Tris, 23% ethanol, pH 7.5, at a stock concentration of 8.5 mM or 9.9 mM (lot dependent); purity of $>90\%$] was from R&D Systems, Inc. (Minneapolis, MN, USA). Abiraterone acetate and cyproterone acetate were purchased from Cayman Chemical Company (Ann Arbor, MI, USA). Abiraterone was purchased from Toronto Research Chemicals, Inc. (Toronto, ON, Canada). Cyproterone was bought from Santa Cruz Biotechnology, Inc. (Dallas, TX, USA). DHEA and DHEA-S were purchased from Steraloids, Inc. (Newport, RI, USA). Methanol (HPLC grade) and acetonitrile (HPLC grade) were purchased from Tedia Company, Inc. (Fairfield, OH, USA), and formic acid was from VWR International Ltd. (Singapore). All other commercially available chemicals were of analytical grade.

Cytosols and Recombinant Enzymes. Human liver cytosol (mixed gender; pool of 150 donors; catalog #452115, lot #38290, Gentest[®] brand; ages of 18-79; 75 females and 75 males) was purchased from Corning, Inc. (Corning, NY, USA). Human male liver cytosol (pool of 10 donors; catalog #H1000.C, lot #0710493; ages of 21-58), human female liver cytosol (pool of 10 donors; catalog #H1500.C; lot #0710245; ages of 31-78), human intestinal cytosol (mixed gender; pool of 13 donors; catalog #H0610.IC, lot #1210439; ages 18-55), human lung cytosol (mixed gender; pool of 4 donors; catalog #H0610.PC(NS), lot #1310100; ages of 12-65) were bought from Sekisui XenoTech, LLC (Kansas City, KS, USA). Human recombinant SULT2A1

#DMD/2017/078980

(catalog #CYP104, lot #INT044E2B) and SULT1E1 (catalog #CYP103, lot #INT044E1B) enzymes, and control cytosol (isolated from *Escherichia coli* host cells) were purchased from Cypex Ltd. (Dundee, Scotland, UK). Previous drug metabolism studies have used these SULT2A1 and SULT1E1 enzymes (Gong et al., 2012; Diao et al., 2014). Human recombinant SULT2B1b enzyme (catalog #6174-ST-020, lot #DADE0616011), which contained Met-1 to Glu-311 amino acids of SULT2B1b expressed in *Escherichia coli* host cells and contained a C-terminal 6-histidine tag, was purchased from R&D Systems, Inc. (Minneapolis, MN, USA). This recombinant SULT2B1b enzyme has been shown to be functional and has a high enzyme activity (>10 nmol/min/mg protein) (R&D Systems, Inc.).

DHEA Sulfonation Assay. The DHEA sulfonation assay was optimized previously (Bansal and Lau, 2016). The total volume of each standard incubation was either 100 μ l (human intestinal cytosol and human lung cytosol) or 200 μ l (human liver cytosol, human male liver cytosol, human female liver cytosol, human recombinant SULT2A1 enzyme, human recombinant SULT2B1b enzyme, and human recombinant SULT1E1 enzyme). Each standard incubation mixture contained potassium phosphate buffer (100 mM, pH 7.4), magnesium chloride (2.5 mM), DHEA (0.5 μ M), and various amounts of cytosols, as specified in each figure legend. The final concentration of methanol was at a concentration (0.5% v/v) not known to affect the DHEA sulfonation assay (Ma et al., 2003). Each incubation mixture was pre-warmed for 3 min at 37°C in a shaking water bath. The enzymatic reaction was initiated by adding a co-substrate known as PAPS (James, 2014), and the mixture was incubated for a specific duration, as specified in each figure legend. In the present study, a saturating concentration of PAPS was used (Bansal and Lau, 2016), either 20 μ M PAPS lithium salt or 1 μ M PAPS solution, which yielded a similar extent of DHEA sulfonation, as assessed in a preliminary experiment involving human liver cytosol. The reaction was terminated by adding an equal volume of ice-cold acetonitrile

#DMD/2017/078980

containing cortisol (0.05 μM final concentration; internal standard). Each sample was mixed immediately, placed on ice, and subsequently centrifuged at 16,000 $\times g$ for 15 min at 4°C. The supernatant was then transferred into a 96-well microplate for ultra-high performance liquid chromatography-tandem mass spectrometry (UPLC-MS/MS) analysis.

Quantification of DHEA-S by UPLC-MS/MS. The amount of DHEA-S and cortisol (internal standard) was quantified using a validated UPLC-MS/MS method shown to be specific, easier, safer, and faster than radiometric-based sulfotransferase enzyme assays (Bansal and Lau, 2016). Calibration standards were prepared by adding freshly prepared DHEA-S stock solutions (1-1000 μM in DMSO) to a standard incubation to give final concentrations of 1-1000 nM DHEA-S (equivalent to 0.2 – 200 pmol in 200 μl).

Enzyme Kinetic Analysis of DHEA Sulfonation. DHEA sulfonation by human tissue cytosols was determined at DHEA concentrations ranging from 0.0025 to 5 μM . The values of V_{max} and apparent K_m were obtained by nonlinear least-squares regression analysis (SigmaPlot 12.5; Systat Software Inc., San Jose, CA, USA) of the velocity of product formation (V) and substrate concentration (S) data using the equations for Michaelis-Menten, Hill, substrate inhibition, and substrate activation models. The goodness of fit for each model was evaluated by considering the Akaike information criterion, R^2 , and visual inspection of the data in the Michaelis-Menten plot. Based on the above evaluation criteria, DHEA sulfonation by cytosols, recombinant SULT2A1 enzyme, and recombinant SULT2B1b enzyme was determined using the substrate inhibition model:

$$V = \frac{V_{\text{max}}}{1 + K_m / S + S / K_i}$$

Based on the above evaluation criteria, DHEA sulfonation by recombinant SULT1E1 enzyme was determined using the Hill model:

#DMD/2017/078980

$$V = \frac{V_{\max} * S^n}{S_{50}^n + S^n}$$

where S represents the substrate concentration, V_{\max} represents the apparent maximum reaction velocity, S_{50} represents the substrate concentration at which the reaction rate is half of V_{\max} (James, 2014), K_i represents the inhibitory constant of the substrate, and n represents the Hill coefficient.

Enzyme Inhibition Experiments. Enzyme inhibition was determined by conducting the DHEA sulfonation assay in the presence of a test chemical, cytosol, and DHEA at an amount or concentration stated in each figure legend. Concentration-response experiments for each of the test chemicals were conducted in the presence of varying concentrations of a test chemical, DHEA (0.5 μM), human liver cytosol (mixed gender; 60 μg), and PAPS (20 μM). Concentration-response curves were plotted and half-maximal inhibitory concentration (IC_{50}) was determined by nonlinear regression analysis (SigmaPlot 12.5) using the sigmoidal dose-response (variable slope) model:

$$y = \min + \frac{\max - \min}{1 + \left(\frac{x}{\text{IC}_{50}} \right)^{-\text{Hill slope}}}$$

where \min is the minimum inhibitory effect, \max is the maximum inhibitory effect, x is the inhibitor concentration, and Hill slope is the Hill coefficient.

To characterize the kinetics of the inhibition, the DHEA sulfonation assay was conducted in the presence of varying concentrations (0.2, 0.4, 0.6, or 0.8 μM) of DHEA and varying concentrations of a test chemical, as indicated in the figure legend. The apparent inhibitory constant (K_i) and the mode of inhibition for each test chemical was determined by nonlinear least-squares regression analysis of the rate of DHEA-S formation at varying concentrations of

#DMD/2017/078980

DHEA and test chemical, using equations for full and partial competitive, noncompetitive, uncompetitive, and mixed-mode inhibition (SigmaPlot 12.5). The goodness of fit for each model was evaluated by considering the Akaike information criterion, R^2 , and visual inspection of the data in the Lineweaver-Burk plot. Based on the above evaluation criteria, the K_i values of galeterone and abiraterone acetate were determined using the competitive inhibition model:

$$v = \frac{V_{\max}}{1 + (K_m/S) * (1 + I/K_i)}$$

Based on the above evaluation criteria, the K_i value of cyproterone acetate was determined using the partial competitive inhibition model:

$$v = \frac{V_{\max}}{1 + (K_m/S) * \frac{(1 + I/K_i)}{(1 + I/(\alpha * K_i))}}$$

Based on the above evaluation criteria, the K_i values of spironolactone and danazol were determined using the partial mixed inhibition model:

$$v = \frac{V_{\max} * \frac{(1 + \beta * I/(a * K_i))}{(1 + I/\alpha * K_i)}}{1 + (K_m/S) * \frac{(1 + I/K_i)}{(1 + I/(\alpha * K_i))}}$$

where S represents the substrate concentration, I represents the inhibitor concentration, V_{\max} represents the apparent maximum reaction velocity, K_m represents the substrate concentration at which the reaction rate is half of V_{\max} , and K_i represents the apparent inhibitory constant.

Formation of Abiraterone and Depletion of Abiraterone Acetate in Human Liver Cytosol. Each 200 μ l standard incubation mixture contained potassium phosphate buffer (100 mM, pH 7.4), magnesium chloride (2.5 mM), abiraterone acetate (0.1 μ M), and 60 μ g of human liver cytosol. The final concentration of methanol was at a concentration (0.5% v/v). Each incubation mixture was pre-warmed for 3 min at 37°C in a shaking water bath. The enzymatic

#DMD/2017/078980

reaction was initiated by adding human liver cytosol, and the mixture was incubated for various durations, as specified in the figure legend. At the end of the incubation period, an 100 μ l aliquot of the incubation mixture was removed and added to 400 μ l of ice-cold acetonitrile containing cortisol (0.25 μ M final concentration; internal standard) for the analysis of abiraterone (i.e. dilution of 5 \times), whereas another 20 μ l aliquot of the incubation mixture was added to 980 μ l of ice-cold acetonitrile containing cortisol (0.25 μ M final concentration; internal standard) for the analysis of abiraterone acetate (i.e. dilution of 50 \times). Each sample was immediately mixed, placed on ice, and subsequently centrifuged at 16,000 \times g for 15 min at 4 $^{\circ}$ C. The supernatant was then transferred into a 96-well microplate for UPLC-MS/MS analysis. Control incubations containing only human liver cytosol, only vehicle (0.5% v/v methanol), or only abiraterone acetate (substrate) were also prepared and analyzed.

Quantification of Abiraterone and Abiraterone Acetate by UPLC-MS/MS. The amount of abiraterone and abiraterone acetate was quantified using a newly developed UPLC-MS/MS method. The instrument consisted of an Agilent 1290 Infinity LC System (Agilent Technologies, Santa Clara, CA, USA) coupled to a AB Sciex 3500 triple quadrupole mass spectrometer (Applied Biosystems, Foster City, CA, USA). Chromatographic separation was carried out on an ACQUITYTM UPLC BEH C₁₈ column (2.1 \times 50 mm, 1.7 μ m), which was protected by an ACQUITYTM UPLC BEH C₁₈ VanGuard Pre-column (2.1 \times 5 mm, 1.7 μ m). The column temperature was maintained at 45 $^{\circ}$ C. The mobile phases were (A) water containing 0.1% formic acid and (B) acetonitrile containing 0.1% formic acid. The mobile phase flow rate was 0.5 ml/min and the gradient elution was optimized as follows: 5% B at 0.0-1.0 min, linear increase from 5% to 95% B at 1.0-2.0 min, 95% B at 2.0-3.5 min, linear increase from 95% to 100% B at 3.5-3.6 min, 100% B at 3.6-5.0 min, linear decrease from 95% to 5% B at 5.0-5.1 min, and 5% B at 5.1-6.0 min. The autosampler compartment was kept at 4 $^{\circ}$ C and the injection

#DMD/2017/078980

volume was 5 μ l. The chromatographic effluent was introduced directly into the mass spectrometer from 1.5 to 3.5 min. The mass spectrometer was operated in the positive electrospray ionization mode. Abiraterone, abiraterone acetate, and cortisol (internal standard) were quantified in the multiple reaction monitoring (MRM) mode using the mass-to-charge transition of m/z 350.3 \rightarrow 156.1, 392.2 \rightarrow 332.3, and 363.2 \rightarrow 121.0, respectively. The optimized compound-dependent MS parameters for abiraterone were as follows: declustering potential, 145.26 V; entrance potential, 10 V; collision energy, 68.20 V; collision cell exit potential, 11.46 V; and dwell time, 200 ms. The optimized compound-dependent MS parameters for abiraterone acetate were as follows: declustering potential, 107.45 V; entrance potential, 10 V; collision energy, 46.82 V; collision cell exit potential, 10.33 V; and dwell time, 200 ms. The optimized compound-dependent MS parameters for cortisol were as follows: declustering potential, 120 V; entrance potential, 4.6 V; collision energy, 30 V; collision cell exit potential, 8 V; and dwell time, 150 ms. Nitrogen gas was used as the ion source and collision gas. The ion spray voltage was 3500 V, ion source temperature was 650 $^{\circ}$ C, curtain gas was 40 psi, collision activated dissociation gas setting was 8 units, and ion source gas 1 and gas 2 were 40 psi. Data acquisition and processing were performed using Analyst software version 1.6.2 (Applied Biosystems).

Calibration standards were prepared by adding freshly prepared abiraterone (1-3000 μ M in DMSO) or abiraterone acetate (1-1000 μ M in DMSO) stock solutions into the incubation mixture to give final concentrations of 1-3000 nM abiraterone (equivalent to 0.1 – 300 pmol in 100 μ l) and 1-1000 nM abiraterone acetate (equivalent to 0.02 – 20 pmol in 20 μ l). To determine the lower limit of quantification (LLOQ), abiraterone and abiraterone acetate stock solutions were diluted and added to the 100 μ l or 20 μ l incubation mixture. Six replicate samples were prepared for each concentration of each chemical. The LLOQ was established based on a signal-

#DMD/2017/078980

to-noise ratio of more than 5:1, a precision of $\pm 20\%$, an accuracy of 80-120%, and at least 4 out of the 6 replicates should fulfill the above criteria (Food and Drug Administration, 2013).

Statistical Analysis. Data were analyzed by one-way analysis of variance (ANOVA) and, where appropriate, was followed by the Student-Newman-Keuls *post-hoc* test (SigmaPlot 12.5). The level of statistical significance was set *a priori* at $p < 0.05$.

#DMD/2017/078980

Results

Optimization of the Assay Conditions for DHEA Sulfonation Catalyzed by Human Liver, Intestinal, and Lung Cytosols. Initial experiments were performed to establish the appropriate conditions for the DHEA sulfonation assay. First, the linear range of the DHEA sulfonation assay with respect to amount of cytosol and incubation time was determined for each type of cytosol. The rate of DHEA-S formation was linear up to 100 μg of human liver cytosol (mixed gender), 200 μg of human liver cytosol (male), 200 μg of human liver cytosol (female), 100 μg of human intestinal cytosol (mixed gender), and 200 μg of human lung cytosol (mixed gender) (Supplemental Fig. S1). The extent of DHEA-S formation was linear up to 25 min for human liver cytosol (mixed gender), 45 min for human liver cytosol (male), 45 min for human liver cytosol (female), 45 min for human intestinal cytosol (mixed gender), and 45 min for human lung cytosol (mixed gender) (Supplemental Fig. S2). The differences in the linearity range with respect to enzyme amount and incubation time among the mixed-gender human liver cytosols (150 donors) versus the male or female liver cytosols (10 donors) may reflect differences in the number of donors in each of these cytosol preparations. Based on those data, subsequent experiments were performed under linear condition with respect to the amount of cytosolic protein and incubation time. Control experiments showed that DHEA-S was not formed in the absence of either substrate (DHEA) or co-substrate (PAPS). DHEA-S and cortisol were below the lower limit of quantification or not detected in blank standard incubation containing cytosol and potassium phosphate buffer.

To optimize the substrate concentration for use in the inhibition assays, we determined the enzyme kinetics of DHEA sulfonation catalyzed by various cytosolic preparations. As shown in Fig. 2A and Table 1, DHEA sulfonation by pooled mixed-gender human liver cytosol yielded an apparent K_m (mean \pm S.D.) of $0.45 \pm 0.14 \mu\text{M}$, V_{max} of $143 \pm 40 \text{ pmol/min/mg protein}$, V_{max}/K_m of

#DMD/2017/078980

323 ± 15 $\mu\text{l}/\text{min}/\text{mg}$ protein, and the kinetics followed substrate inhibition model with an apparent K_i of 2.5 ± 1.6 μM . Cytosols from male liver (Fig. 2B) and female liver (Fig. 2C) gave comparable kinetic values (apparent K_m , V_{max} , V_{max}/K_m , and substrate inhibition K_i) (Table 1). Compared to mixed-gender human liver cytosol, mixed-gender human intestinal cytosol sulfonated DHEA with comparable apparent K_m and K_i , but smaller V_{max} and V_{max}/K_m values (Fig. 2D and Table 1). In contrast, mixed-gender human lung cytosol sulfonated DHEA to a very little extent and kinetic values could not be determined (Fig. 2E). Our findings are consistent with those reported previously that sulfotransferases are susceptible to inhibition at high substrate concentrations (Gamage et al., 2006; James, 2014).

Comparative Effect of Galeterone and Abiraterone Acetate on DHEA Sulfonation Catalyzed by Human Liver and Intestinal Cytosols. To determine whether galeterone and abiraterone acetate differentially inhibited DHEA sulfonation, human liver or intestinal cytosol was incubated with DHEA (0.5 μM) and an equimolar concentration (10 μM) of galeterone, abiraterone acetate, or 0.5% v/v vehicle. The concentration of DHEA was selected based on the apparent K_m values and the linear range of the velocity-substrate curves obtained for each type of cytosol (Fig. 2 and Table 1). As shown in Fig. 3A, galeterone and abiraterone acetate inhibited DHEA sulfonation catalyzed by human liver cytosol (mixed gender) to a similar extent (>95%). Control experiments showed that cyproterone acetate, spironolactone, and danazol inhibited the activity by 69%, 54%, and 59%, respectively. The inhibition pattern by the five chemicals was similar for human male liver cytosol (Fig. 3B), human female liver cytosol (Fig. 3C), and human intestinal cytosol (mixed gender) (Fig. 3D). Amoxicillin, which did not inhibit human liver cytosolic DHEA sulfonation in a previous study (Bamforth et al., 1992), was used as a negative control. As expected, amoxicillin did not inhibit DHEA sulfonation by various cytosols (Fig.

#DMD/2017/078980

3A-D). Blank samples containing a known amount of DHEA-S and each of the five inhibitors were analyzed by UPLC-MS/MS. None of the inhibitors interfered with the quantification of DHEA-S by the analytical method (data not shown).

Concentration-Response Relationship in the Inhibition of Human Liver Cytosolic DHEA Sulfonation by Galeterone and Abiraterone Acetate. Given that galeterone and abiraterone acetate inhibited DHEA sulfonation by various cytosols obtained from different sex and tissues in a similar pattern, subsequent experiments were performed with human mixed-gender liver cytosol. The next aim was to determine the minimum inhibitory concentration and inhibitory potency (IC_{50} values) of each chemical in the inhibition of human liver cytosolic DHEA sulfonation. As shown in Fig. 4A-E, the minimum inhibitory concentration was 0.1 μ M for galeterone and 1 μ M for abiraterone acetate, whereas it was 1 μ M for the positive controls (cyproterone acetate, spironolactone, and danazol). The IC_{50} values (mean \pm S.D.) for the inhibition of human liver cytosolic DHEA sulfonation by galeterone, abiraterone acetate, cyproterone acetate, spironolactone, and danazol were 0.30 ± 0.06 , 1.68 ± 0.39 , 1.55 ± 0.67 , 5.90 ± 1.44 , and 2.16 ± 0.49 μ M, respectively.

Mode of Inhibition of Human Liver Cytosolic DHEA Sulfonation by Galeterone and Abiraterone Acetate. To determine the mode of inhibition and apparent inhibitory constant (K_i) for each chemical, enzyme kinetics experiments were performed with four concentrations of each inhibitor (selected based on the IC_{50} values, as determined from the concentration-response experiments) and four concentrations of the substrate (DHEA). Non-linear least-squares regression analysis indicated that galeterone (Fig. 5A) and abiraterone acetate (Fig. 5B) inhibited human liver cytosolic DHEA sulfonation by competitive mode with apparent K_i values of 0.19 ± 0.07 μ M and 0.47 ± 0.20 μ M, respectively (Table 2). As shown in Fig. 5C, cyproterone acetate

#DMD/2017/078980

exhibited partial competitive inhibition with an apparent K_i value of $1.24 \pm 0.41 \mu\text{M}$ (Table 2). Spironolactone (Fig. 5D) and danazol (Fig. 5E) showed partial mixed mode inhibition, with apparent K_i values of $4.63 \pm 1.79 \mu\text{M}$ and $1.90 \pm 0.82 \mu\text{M}$, respectively (Table 2).

Differential Effect of Galeterone and Abiraterone Acetate on DHEA Sulfonation Catalyzed by Human Recombinant SULT2A1, SULT2B1b, and SULT1E1. DHEA, which is a prototypical substrate of SULT2A1, has also been reported to be metabolized by SULT2B1 (Meloche and Falany, 2001; Geese and Raftogianis, 2001) and SULT1E1 (Falany et al., 1995). Therefore, an initial experiment was performed to compare the enzyme kinetics of DHEA sulfonation by human recombinant SULT2A1, SULT2B1b, and SULT1E1 to determine the optimal substrate concentration to use for inhibition experiments. The DHEA sulfonation assay was linear with respect to amount of enzyme (up to 5 μg of SULT2A1, 0.3 μg of SULT2B1b, and 5 μg of SULT1E1) and incubation time (up to 45 min for SULT2A1, 60 min for SULT2B1b and SULT1E1). Enzyme kinetic analysis showed that the kinetics of DHEA sulfonation catalyzed by SULT2A1 and SULT2B1b followed the substrate inhibition model, whereas DHEA sulfonation catalyzed by SULT1E1 followed the Hill model (Fig 6A-C). The apparent V_{max} was 2220 ± 388 pmol/min/mg protein and the apparent K_m was of $0.50 \pm 0.15 \mu\text{M}$ for SULT2A1-catalyzed DHEA sulfonation. By comparison, the apparent V_{max} was $15,934 \pm 2450$ pmol/min/mg protein and the apparent K_m was $2.73 \pm 0.39 \mu\text{M}$ for SULT2B1b-catalyzed DHEA sulfonation. In the case of SULT1E1-catalyzed DHEA sulfonation, the apparent V_{max} was 406 ± 56 pmol/min/mg protein and the apparent S_{50} was $0.27 \pm 0.07 \mu\text{M}$. Analysis with control cytosol (corresponding to the one used for expressing the human recombinant enzymes) did not yield any metabolite (data not shown). Based on the results obtained, the substrate concentration of $0.5 \mu\text{M}$ DHEA was selected for subsequent inhibition experiments.

#DMD/2017/078980

It is not known whether galeterone and abiraterone acetate differentially inhibits DHEA sulfonation catalyzed by SULT2A1, SULT2B1b, and SULT1E1. Therefore, we compared the effect of galeterone and abiraterone acetate on DHEA sulfonation catalyzed by these enzymes and compared with that of cyproterone acetate, spironolactone, and danazol. Galeterone, abiraterone acetate, cyproterone acetate, spironolactone, and danazol inhibited SULT2A1-catalyzed DHEA sulfonation (Fig. 7A). With galeterone as an inhibitor, it appears that the extent of SULT2A1 (Fig. 7A) and SULT2B1b (Fig. 7B) inhibition was greater than the extent of SULT1E1 inhibition (Fig. 7C). By comparison, abiraterone acetate inhibited SULT1E1 to a greater extent than SULT2A1 and SULT2B1b. Compared to galeterone, abiraterone acetate was a much less efficacious inhibitor of SULT2A1 (Fig. 7A) and SULT2B1b (Fig. 7B). This was in direct contrast to the data from human liver cytosol where both galeterone and abiraterone acetate inhibited the activity to a similar extent (Fig. 3A). Amoxicillin, which did not inhibit human liver cytosolic DHEA sulfonation in a previous study (Bamforth et al., 1992), was used as a negative control. It had little or no effect on SULT2A1, SULT2B1b, or SULT1E1. Quercetin was reported to be an inhibitor of ethinyl estradiol 3-*O*-sulfonation and inhibited SULT1E1 but not SULT2A1 (Schrag et al., 2004). Therefore, it was used as a positive control for SULT1E1 and negative control for SULT2A1. In our experiments, quercetin inhibited SULT2B1b and SULT1E1 to a far greater extent than SULT2A1 (Fig. 7A-C).

Comparative Effect of Abiraterone Acetate and an Active Metabolite Abiraterone on Human Liver Cytosolic-, SULT2A1-, SULT2B1b-, and SULT1E1-catalyzed DHEA Sulfonation. To compare the apparent inhibitory constant (K_i) for the effect of abiraterone acetate and abiraterone on DHEA sulfonation catalyzed by human liver cytosol, an enzyme inhibition experiment was conducted. Non-linear least-squares regression analysis of enzyme kinetic data obtained from the same experiment yielded comparable apparent K_i values in

#DMD/2017/078980

incubations containing abiraterone acetate ($0.51 \pm 0.20 \mu\text{M}$) or abiraterone ($0.60 \pm 0.09 \mu\text{M}$). However, abiraterone acetate inhibited human liver cytosolic DHEA sulfonation to a far greater extent than its inhibition of SULT2A1- and SULT2B1-catalyzed DHEA sulfonation (Fig. 3 and 7), whereas this difference between cytosol and SULT2A1/SULT2B1 was not apparent for other inhibitors (galeterone, cyproterone acetate, spironolactone, or danazol) (Fig. 3 and 7). Therefore, we hypothesized that the prodrug abiraterone acetate was metabolized to abiraterone (an active metabolite) in incubations containing human liver cytosol but not in incubations containing human recombinant sulfotransferase enzyme, and that the inhibition of human liver cytosolic DHEA sulfonation was due to abiraterone rather than abiraterone acetate. To test our hypothesis, we compared the effect of abiraterone acetate with abiraterone on DHEA sulfonation catalyzed by human liver cytosol and human recombinant SULT2A1, SULT2B1b, and SULT1E1. As shown in Fig. 8A, abiraterone inhibited human liver cytosolic DHEA sulfonation to a similar extent as that by abiraterone acetate. In contrast, abiraterone, at 1, 3, 10, and 30 μM , inhibited SULT2A1 and SULT2B1b to a greater extent than the corresponding concentration of abiraterone acetate (Fig. 8B and 8C). As shown in Fig. 8D, 1 μM abiraterone was more effective than 1 μM abiraterone acetate in the inhibition of SULT1E1-catalyzed DHEA sulfonation, whereas at 3, 10, and 30 μM , the extent of inhibition by both chemicals was similar (Fig. 8D).

Formation of Abiraterone and Depletion of Abiraterone Acetate in Enzymatic Incubations Containing Human Liver Cytosol. To gain additional insight as to whether DHEA sulfonation in incubations containing human liver cytosol and abiraterone acetate was due to abiraterone rather than abiraterone acetate, the formation of abiraterone (metabolite) and depletion of abiraterone acetate (substrate) in human liver cytosol was quantified. A new UPLC-MS/MS method was developed to accurately quantify abiraterone and abiraterone acetate. The bioanalytical method was sensitive, yielding a LLOQ of 0.2 nM (0.1 pmol in 100 μl incubation

#DMD/2017/078980

mixture) for abiraterone and 0.02 nM (0.02 pmol in 20 μ l incubation mixture) for abiraterone acetate. As shown in Fig. 9A, the formation of abiraterone increased with incubation time and reached a plateau after 10-15 min. Correspondingly, in the same incubation mixture, the amount of abiraterone acetate decreased to a negligible level by 10 min (Fig. 9B). Control incubations containing only human liver cytosol, only vehicle (0.5% v/v methanol), or only abiraterone acetate (substrate) did not yield any abiraterone or abiraterone acetate peak. Taken together, these findings indicated that abiraterone acetate was converted almost completely to abiraterone in human liver cytosol after 15 min incubation time, which was the incubation time used in other experiments (Fig. 3, 4, 5, and 8).

Comparative Inhibition of Human Liver Cytosolic-, SULT2A1-, SULT2B1b-, and SULT1E1-catalyzed DHEA Sulfonation by Cyproterone Acetate and Cyproterone. Given that abiraterone and abiraterone acetate differ by a hydroxyl group at the C₃ position of the steroidal ring and that abiraterone was a more potent inhibitor of SULT2A1 than abiraterone acetate (Fig. 8B), the next question was whether the substituent (hydroxyl versus acetate group) at the C₁₇ position of cyproterone acetate also plays a role in the inhibition of DHEA sulfonation. Therefore, we compared the effect of cyproterone on human liver cytosol-, SULT2A1-, SULT2B1b-, and SULT1E1-catalyzed DHEA sulfonation with that of cyproterone acetate. As shown in Fig. 10A and 10B, 1, 3, 10, and 30 μ M of cyproterone decreased human liver cytosol- and SULT2A1-catalyzed DHEA sulfonation to a lesser extent than that by cyproterone acetate. Similarly, 3, 10, and 30 μ M of cyproterone decreased SULT2B1b-catalyzed DHEA sulfonation to a far lesser extent than that by cyproterone acetate (Fig. 10C). In contrast, SULT1E1-catalyzed DHEA sulfonation was inhibited to a greater extent by 3, 10, and 30 μ M of cyproterone as compared to the corresponding concentrations of cyproterone acetate (Fig. 10D).

#DMD/2017/078980

Discussion

A novel finding from our study is that the steroidal anti-androgens galeterone and abiraterone inhibited DHEA sulfonation catalyzed by human tissue cytosol, including liver cytosol (male, female, and mixed gender) and intestine cytosol (mixed gender). These drugs are relatively potent inhibitors of human liver cytosolic DHEA sulfonation, with apparent K_i values at submicromolar concentrations (Table 2). Given that abiraterone is a substrate of SULT2A1 (Janssen Biotech, 2017), this supports our finding that abiraterone inhibited DHEA sulfonation by competitive mode. The structural similarities between abiraterone and galeterone suggest that galeterone may also be a substrate of SULT2A1. As shown in the present study, galeterone inhibited DHEA sulfonation by a competitive mode. Overall, the hydroxyl group at the C₃ position of the steroidal backbone, as evident in the prototypical substrate DHEA, galeterone, and abiraterone, may be essential for the interaction with amino acid moieties in the active site of SULT2A1 and to facilitate sulfonation.

Human SULT2A1 (Falany et al., 1989), SULT2B1a (Meloche and Falany, 2001; Geese and Raftogianis, 2001), SULT2B1b (Meloche and Falany, 2001; Geese and Raftogianis, 2001), and SULT1E1 (Falany et al., 1995) have been reported to catalyze DHEA sulfonation. As shown by the catalytic efficiency (ratio of V_{max}/K_m) calculated in the present study, SULT2B1b and SULT2A1 were most efficient in catalyzing DHEA sulfonation, whereas SULT1E1 was the least efficient. This is the first systematic enzyme kinetic analysis of DHEA sulfonation by these three enzymes in a single study. Prior to the present study, no chemical inhibitors have been reported for SULT2B1b, and only a few chemical inhibitors have been identified for human SULT2A1 and SULT1E1 enzymes. Based on studies conducted with human SULT2A1 and SULT1E1 recombinant enzymes, hydroxylated polychlorinated biphenyls (Liu et al., 2006; Ekuase et al., 2011), celecoxib (Ambadapadi et al., 2015), and tamoxifen metabolites (endoxifen, *N*-

#DMD/2017/078980

desmethyltamoxifen, 4-hydroxytamoxifen, tamoxifen *N*-oxide) (Squirewell et al., 2014) are the known chemical inhibitors of SULT2A1, whereas hydroxylated metabolites of polyhalogenated aromatic hydrocarbons (Kester et al., 2002), quercetin (Schrag et al., 2004), triclosan (Wang et al., 2004), non-steroidal anti-inflammatory agents (e.g. meclofenamic acid, sulindac) (King et al., 2006), and *trans*-resveratrol and a metabolite (piceatannol) (Furimsky et al., 2008), are inhibitors of SULT1E1. In the present study, we identified galeterone, abiraterone, and cyproterone acetate as the first chemical inhibitors of SULT2B1b. Furthermore, in the case of galeterone, the extent of inhibition was greater when DHEA sulfonation was catalyzed by SULT2A1 or SULT2B1b than when it was catalyzed by SULT1E1. By comparison, cyproterone acetate, spironolactone, and danazol inhibited SULT2A1 and SULT2B1b, but not SULT1E1. This preferential inhibition may be related to the greater amino acid sequence similarity between SULT2A1 and SULT2B1b (Tibbs et al., 2015). Interestingly, among the various inhibitors, only abiraterone acetate elicited a slightly greater inhibitory effect on SULT1E1 than SULT2A1 and SULT2B1b.

The extent of the inhibition of DHEA sulfonation in incubations containing abiraterone acetate and either SULT2A1 or SULT2B1b was less than that in incubations containing abiraterone acetate and human liver cytosol. Abiraterone acetate is a prodrug formulated to improve bioavailability (Acharya et al., 2012). *In vivo*, upon administration, abiraterone acetate is rapidly deacetylated to its active form, abiraterone, by intestinal esterases (Stappaerts et al., 2015). In contrast to incubations containing recombinant an SULT enzyme, incubations containing liver or intestinal cytosol would contain esterases (Jewell et al., 2007; Laizure et al., 2013), which are capable of metabolizing abiraterone acetate to abiraterone, resulting in inhibition of DHEA sulfonation. Time course experiment indicated that abiraterone acetate was almost completely metabolized to abiraterone by human liver cytosol within 15 min of incubation time, suggesting that abiraterone was the chemical responsible for the inhibition of SULT

#DMD/2017/078980

enzymes in incubations in which abiraterone acetate was added. Therefore, the presence of the larger acetyl group at the C₃ position appears to hinder binding of abiraterone acetate to the active site, and the lack of a C₃ hydroxyl group for sulfonation renders the acetate form of abiraterone less effective as an inhibitor of sulfotransferases. This explanation is consistent with the following findings: 1) comparable inhibitory effect of the active metabolite, abiraterone, on DHEA sulfonation catalyzed by human liver cytosol, SULT2A1, and SULT2B1b; and 2) galeterone, which is not acetylated at the C₃ position, yielded similar inhibitory efficacy on DHEA sulfonation catalyzed by human liver cytosol, SULT2A1, and SULT2B1b.

As mentioned above, the hydroxyl group at the C₃ position of the steroidal ring in the abiraterone molecule was required for the inhibitory effect of abiraterone on sulfotransferase-catalyzed DHEA sulfonation. By comparison, the hydroxyl group at the C₁₇ position of cyproterone rendered this chemical to be less effective in inhibiting DHEA sulfonation when catalyzed by human liver cytosol, SULT2A1, and SULT2B1b, but somewhat more effective in inhibiting DHEA sulfonation when catalyzed by SULT1E1. This suggests differences in the structural requirement among SULT2A1, SULT2B1b, and SULT1E1 in the interaction between cyproterone and DHEA.

The potential *in vivo* relevance of the *in vitro* inhibition of sulfotransferase-catalyzed DHEA sulfonation by galeterone, abiraterone acetate, abiraterone, and other anti-androgens such as cyproterone acetate, danazol, and spironolactone depends on the *in vivo* plasma drug concentrations achieved in humans. Using the *in vivo* human plasma drug concentrations (obtained from the literature and summarized in Table 2) and the apparent K_i values obtained in the present study, the R values $[1 + [I]/K_i]$ were calculated (Food and Drug Administration, 2012). Based on the calculated R values (Table 2) and according to a U.S. Food and Drug Administration guidance for drug interaction studies (Food and Drug Administration, 2012),

#DMD/2017/078980

galeterone and abiraterone are candidate inhibitors of DHEA sulfonation *in vivo* and future investigations in humans are warranted. Our results show that galeterone and abiraterone inhibit not only hepatic SULT2A1, but also intestinal sulfotransferases, such as SULT2B1b and SULT1E1. In the gastrointestinal tract, the intraluminal concentration of abiraterone acetate was reported to reach a peak of approximately 200 μM in healthy human volunteers who were administered with a single 250 mg dose of abiraterone acetate tablet (Zytiga[®]) (Stappaerts et al., 2015). This concentration is approximately 426 times greater than the apparent K_i value of approximately 0.5 μM (obtained with hepatic cytosol in the present study), suggesting a greater probability for *in vivo* interactions with intestinal sulfotransferases, thereby providing a potential extrahepatic mechanism for an abiraterone-based drug interaction.

Due to high expression of SULT2A1 in the liver and adrenal gland, these tissues predominantly conjugate DHEA to DHEA-S and serve as a major source of systemic DHEA-S (Mueller et al., 2015). Therefore, the present study was conducted predominantly in human liver cytosol to determine the impact of anti-androgen drugs on DHEA-S levels in the liver. As unconjugated DHEA is less metabolically stable than DHEA-S (Hornsby, 1997; Rutkowski et al., 2014), the major circulating form in the plasma is DHEA-S. Our findings suggest that galeterone and abiraterone inhibit the formation of DHEA-S, which is the form of DHEA that is circulated and transported to peripheral tissues, such as prostate, thereby decreasing the transport of DHEA-S to peripheral tissues and leading to a decrease in the *in situ* formation of DHEA and androgens in peripheral tissues (Mueller et al., 2015). Therefore, inhibition of hepatic sulfonation of DHEA to DHEA-S by galeterone and abiraterone may confer a beneficial effect in prostate cancer because local formation of androgens in the prostate is one of the reasons for drug resistance and progression of prostate cancer (Chang et al., 2014). Future *in vivo* studies will be needed to determine the overall impact of anti-androgen drugs on DHEA-S transport from liver to prostate

#DMD/2017/078980

and whether a decrease in hepatic DHEA-S, which is the main source of DHEA reaching peripheral tissues, leads to a subsequent decrease in androgen levels in the prostate.

In conclusion, galeterone and abiraterone competitively inhibited human liver cytosolic DHEA sulfonation. As no known chemical inhibitors of SULT2B1b have been reported to date, our study identified the first class of chemicals that inhibit the catalytic activity of SULT2B1b. In view of the likelihood of *in vivo* inhibition of DHEA sulfonation by galeterone and abiraterone (Table 2), there may be potential interactions with other drugs or chemicals sulfonated predominantly by SULT2A1 or SULT2B1b.

#DMD/2017/078980

Authorship Contributions

Participated in research design: Yip, Bansal, Wong, and Lau.

Conducted experiments: Yip, Bansal, and Wong.

Contributed new reagents or analytic tools: N/A

Performed data analysis: Yip, Bansal, Wong, and Lau.

Wrote or contributed to the writing of the manuscript: Yip and Lau.

#DMD/2017/078980

References

- Acharya M, Bernard A, Gonzalez M, Jiao J, De Vries R, and Tran N (2012) Open-label, phase I, pharmacokinetic studies of abiraterone acetate in healthy men. *Cancer Chemother Pharmacol* **69**:1583-1590.
- Ambadapadi S, Wang PL, Palii SP, and James MO (2015) Celecoxib influences steroid sulfonation catalyzed by human recombinant sulfotransferase 2A1. *J Steroid Biochem Mol Biol* **152**:101-113.
- Bamforth KJ, Dalgliesh K, and Coughtrie MW (1992) Inhibition of human liver steroid sulfotransferase activities by drugs: a novel mechanism of drug toxicity? *Eur J Pharmacol* **228**:15-21.
- Bansal S and Lau AJ (2016) Human liver cytosolic sulfotransferase 2A1-dependent dehydroepiandrosterone sulfation assay by ultra-high performance liquid chromatography-tandem mass spectrometry. *J Pharm Biomed Anal* **120**:261-269.
- Beckett RD, Rodeffer KM, and Snodgrass R (2012) Abiraterone for the treatment of metastatic castrate-resistant prostate cancer. *Ann Pharmacother* **46**:1016-1024.
- Blanchard RL, Freimuth RR, Buck J, Weinshilboum RM, and Coughtrie MW (2004) A proposed nomenclature system for the cytosolic sulfotransferase (SULT) superfamily. *Pharmacogenetics* **14**:199-211.
- Chang KH, Ercole CE, and Sharifi N (2014) Androgen metabolism in prostate cancer: from molecular mechanisms to clinical consequences. *Br J Cancer* **111**:1249-1254.
- Charman WN, Rogge MC, Boddy AW, Barr WH, and Berger BM (1993) Absorption of danazol after administration to different sites of the gastrointestinal tract and the relationship to single- and double-peak phenomena in the plasma profiles. *J Clin Pharmacol* **33**:1207-1213.
- Chen Y, Clegg NJ, and Scher HI (2009) Anti-androgens and androgen-depleting therapies in prostate cancer: new agents for an established target. *Lancet Oncol* **10**:981-991.
- Chi KN, Spratlin J, Kollmannsberger C, North S, Pankras C, Gonzalez M, Bernard A, Stieltjes H, Peng L, Jiao J, Acharya M, Kheoh T, Griffin TW, Yu MK, Chien C, and Tran NP (2015) Food effects on abiraterone pharmacokinetics in healthy subjects and patients with metastatic castration-resistant prostate cancer. *J Clin Pharmacol* **55**:1406-1414.
- Diao X, Pang X, Xie C, Guo Z, Zhong D, and Chen X (2014) Bioactivation of 3-*n*-butylphthalide via sulfation of its major metabolite 3-hydroxy-NBP: mediated mainly by sulfotransferase 1A1. *Drug Metab Dispos* **42**:774-781.
- Ekuse EJ, Liu Y, Lehmler HJ, Robertson LW, and Duffel MW (2011) Structure-activity relationships for hydroxylated polychlorinated biphenyls as inhibitors of the sulfation of dehydroepiandrosterone catalyzed by human hydroxysteroid sulfotransferase SULT2A1. *Chem Res Toxicol* **24**:1720-1728.

#DMD/2017/078980

Falany CN, Krasnykh V, and Falany JL (1995) Bacterial expression and characterization of a cDNA for human liver estrogen sulfotransferase. *J Steroid Biochem Mol Biol* **52**:529-539.

Falany CN and Rohn-Glowacki KJ (2013) SULT2B1: unique properties and characteristics of a hydroxysteroid sulfotransferase family. *Drug Metab Rev* **45**:388-400.

Falany CN, Vazquez ME, and Kalb JM (1989) Purification and characterization of human liver dehydroepiandrosterone sulphotransferase. *Biochem J* **260**:641-646.

Food and Drug Administration (2012) *Drug Interaction Studies - Study design, data analysis, implications for dosing, and labeling recommendations*. U.S. Department of Health and Human Services, Food and Drug Administration, Center for Drug Evaluation and Research (CDER).

Food and Drug Administration (2013) *Guidance for Industry: Bioanalytical Method Validation*. U.S. Department of Health and Human Services, Food and Drug Administration, Centre for Drug Evaluation and Research (CDER), Center for Biologics Evaluation and Research (CBER), Rockville, M.D.

Furimsky AM, Green CE, Sharp LE, Catz P, Adjei AA, Parman T, Kapetanovic IM, Weinshilboum RM, and Iyer LV (2008) Effect of resveratrol on 17 β -estradiol sulfation by human hepatic and jejunal S9 and recombinant sulfotransferase 1E1. *Drug Metab Dispos* **36**:129-136.

Gamage N, Barnett A, Hempel N, Duggleby RG, Windmill KF, Martin JL, and McManus ME (2006) Human sulfotransferases and their role in chemical metabolism. *Toxicol Sci* **90**:5-22.

Geese WJ and Raftogianis RB (2001) Biochemical characterization and tissue distribution of human SULT2B1. *Biochem Biophys Res Commun* **288**:280-289.

Glatt H (2000) Sulfotransferases in the bioactivation of xenobiotics. *Chem Biol Interact* **129**:141-170.

Gong J, Gan J, and Iyer RA (2012) Identification of the oxidative and conjugative enzymes involved in the biotransformation of brivanib. *Drug Metab Dispos* **40**:219-226.

Han CS, Patel R, and Kim IY (2015) Pharmacokinetics, pharmacodynamics and clinical efficacy of abiraterone acetate for treating metastatic castration-resistant prostate cancer. *Expert Opin Drug Metab Toxicol* **11**:967-975.

Her C, Wood TC, Eichler EE, Mohrenweiser HW, Ramagli LS, Siciliano MJ, and Weinshilboum RM (1998) Human hydroxysteroid sulfotransferase SULT2B1: two enzymes encoded by a single chromosome 19 gene. *Genomics* **53**:284-295.

Hornsby PJ (1997) DHEA: a biologist's perspective. *J Am Geriatr Soc* **45**:1395-1401.

James MO (2014) Enzyme kinetics of conjugating enzymes: PAPS sulfotransferase. *Methods Mol Biol* **1113**:187-201.

#DMD/2017/078980

- James MO and Ambadapadi S (2013) Interactions of cytosolic sulfotransferases with xenobiotics. *Drug Metab Rev* **45**:401-414.
- Janssen Biotech I (2017) ZYTIGA[®] (abiraterone acetate) Tablets: Full prescribing information. <https://www.zytiga.com/shared/product/zytiga/zytiga-prescribing-information.pdf>.
- Javitt NB, Lee YC, Shimizu C, Fuda H, and Strott CA (2001) Cholesterol and hydroxycholesterol sulfotransferases: identification, distinction from dehydroepiandrosterone sulfotransferase, and differential tissue expression. *Endocrinology* **142**:2978-2984.
- Jewell C, Bennett P, Mutch E, Ackermann C, and Williams FM (2007) Inter-individual variability in esterases in human liver. *Biochem Pharmacol* **74**:932-939.
- Karim A (1978) Spironolactone: Disposition, metabolism, pharmacodynamics, and bioavailability. *Drug Metab Rev* **8**:151-188.
- Kester MH, Bulduk S, van Toor H, Tibboel D, Meinel W, Glatt H, Falany CN, Coughtrie MW, Schuur AG, Brouwer A, and Visser TJ (2002) Potent inhibition of estrogen sulfotransferase by hydroxylated metabolites of polyhalogenated aromatic hydrocarbons reveals alternative mechanism for estrogenic activity of endocrine disrupters. *J Clin Endocrinol Metab* **87**:1142-1150.
- King RS, Ghosh AA, and Wu J (2006) Inhibition of human phenol and estrogen sulfotransferase by certain non-steroidal anti-inflammatory agents. *Curr Drug Metab* **7**:745-753.
- Kramer WG, Vince B, and McGarry C (2013) Comparison of the pharmacokinetics (PK) of galeterone novel oral formulations. *Journal of Clinical Oncology* **31**:e16075.
- Kuhnz W, Kulmann H, and Fuhrmeister A (1997) Investigation into the age-dependence of the pharmacokinetics of cyproterone acetate in healthy male volunteers. *Eur J Clin Pharmacol* **53**:75-80.
- Laizure SC, Herring V, Hu Z, Witbrodt K, and Parker RB (2013) The role of human carboxylesterases in drug metabolism: have we overlooked their importance? *Pharmacotherapy* **33**:210-222.
- Liu Y, Apak TI, Lehmler HJ, Robertson LW, and Duffel MW (2006) Hydroxylated polychlorinated biphenyls are substrates and inhibitors of human hydroxysteroid sulfotransferase SULT2A1. *Chem Res Toxicol* **19**:1420-1425.
- Ma B, Shou M, and Schrag ML (2003) Solvent effect on cDNA-expressed human sulfotransferase (SULT) activities in vitro. *Drug Metab Dispos* **31**:1300-1305.
- Maninger N, Wolkowitz OM, Reus VI, Epel ES, and Mellon SH (2009) Neurobiological and neuropsychiatric effects of dehydroepiandrosterone (DHEA) and DHEA sulfate (DHEAS). *Front Neuroendocrinol* **30**:65-91.

#DMD/2017/078980

- Meloche CA and Falany CN (2001) Expression and characterization of the human 3 β -hydroxysteroid sulfotransferases (SULT2B1a and SULT2B1b). *J Steroid Biochem Mol Biol* **77**:261-269.
- Montgomery B, Eisenberger MA, Rettig MB, Chu F, Pili R, Stephenson JJ, Vogelzang NJ, Koletsky AJ, Nordquist LT, Edenfield WJ, Mamlouk K, Ferrante KJ, and Taplin ME (2016) Androgen Receptor Modulation Optimized for Response (ARMOR) Phase I and II studies: Galeterone for the treatment of castration-resistant prostate cancer. *Clin Cancer Res* **22**:1356-1363.
- Mueller JW, Gilligan LC, Idkowiak J, Arlt W, and Foster PA (2015) The regulation of steroid action by sulfation and desulfation. *Endocr Rev* **36**:526-563.
- Nakamura Y, Suzuki T, Fukuda T, Ito A, Endo M, Moriya T, Arai Y, and Sasano H (2006) Steroid sulfatase and estrogen sulfotransferase in human prostate cancer. *Prostate* **66**:1005-1012.
- Prough RA, Clark BJ, and Klinge CM (2016) Novel mechanisms for DHEA action. *J Mol Endocrinol* **56**:R139-R155.
- Radomska A, Comer KA, Zimniak P, Falany J, Iscan M, and Falany CN (1990) Human liver steroid sulphotransferase sulphates bile acids. *Biochem J* **272**:597-604.
- Riches Z, Stanley EL, Bloomer JC, and Coughtrie MW (2009) Quantitative evaluation of the expression and activity of five major sulfotransferases (SULTs) in human tissues: the SULT "pie". *Drug Metab Dispos* **37**:2255-2261.
- Rutkowski K, Sowa P, Rutkowska-Talipska J, Kuryliszyn-Moskal A, and Rutkowski R (2014) Dehydroepiandrosterone (DHEA): Hypes and hopes. *Drugs* **74**:1195-1207.
- Schrag ML, Cui D, Rushmore TH, Shou M, Ma B, and Rodrigues AD (2004) Sulfotransferase 1E1 is a low K_m isoform mediating the 3-*O*-sulfation of ethinyl estradiol. *Drug Metab Dispos* **32**:1299-1303.
- Shibutani S, Dasaradhi L, Terashima I, Banoglu E, and Duffel MW (1998) Alpha-hydroxytamoxifen is a substrate of hydroxysteroid (alcohol) sulfotransferase, resulting in tamoxifen DNA adducts. *Cancer Res* **58**:647-653.
- Squirewell EJ, Qin X, and Duffel MW (2014) Endoxifen and other metabolites of tamoxifen inhibit human hydroxysteroid sulfotransferase 2A1 (hSULT2A1). *Drug Metab Dispos* **42**:1843-1850.
- Stappaerts J, Geboers S, Snoeys J, Brouwers J, Tack J, Annaert P, and Augustijns P (2015) Rapid conversion of the ester prodrug abiraterone acetate results in intestinal supersaturation and enhanced absorption of abiraterone: *In vitro*, rat *in situ* and human *in vivo* studies. *Eur J Pharm Biopharm* **90**:1-7.

#DMD/2017/078980

- Takase Y, Luu-The V, Poisson-Pare D, Labrie F, and Pelletier G (2007) Expression of sulfotransferase 1E1 in human prostate as studied by in situ hybridization and immunocytochemistry. *Prostate* **67**:405-409.
- Thompson I, Thrasher JB, Aus G, Burnett AL, Canby-Hagino ED, Cookson MS, D'Amico AV, Dmochowski RR, Eton DT, Forman JD, Goldenberg SL, Hernandez J, Higano CS, Kraus SR, Moul JW, and Tangen CM (2007) Guideline for the management of clinically localized prostate cancer: 2007 update. *J Urol* **177**:2106-2131.
- Tibbs ZE, Rohn-Glowacki KJ, Crittenden F, Guidry AL, and Falany CN (2015) Structural plasticity in the human cytosolic sulfotransferase dimer and its role in substrate selectivity and catalysis. *Drug Metab Pharmacokinet* **30**:3-20.
- Wang LQ, Falany CN, and James MO (2004) Triclosan as a substrate and inhibitor of 3'-phosphoadenosine 5'-phosphosulfate-sulfotransferase and UDP-glucuronosyl transferase in human liver fractions. *Drug Metab Dispos* **32**:1162-1169.
- Wang LQ and James MO (2006) Inhibition of sulfotransferases by xenobiotics. *Curr Drug Metab* **7**:83-104.
- Wang T, Cook I, Falany CN, and Leyh TS (2014) Paradigms of sulfotransferase catalysis: The mechanism of SULT2A1. *J Biol Chem* **289**:26474-26480.
- Yen SS (2001) Dehydroepiandrosterone sulfate and longevity: New clues for an old friend. *Proc Natl Acad Sci USA* **98**:8167-8169.

#DMD/2017/078980

Footnotes

This research was supported by the Singapore Ministry of Education Academic Research Fund Tier 1 [Grant R-148-000-218-112 to AJL], the National University of Singapore [Start-Up Grant R-148-000-185-133 to AJL], and the Singapore Ministry of Health's National Medical Research Council under its Cooperative Basic Research Grant scheme [Grant R-148-000-225-511 to AJL]. SB was supported by a National University of Singapore Research Scholarship.

Address correspondence to: Dr. Aik Jiang Lau, Department of Pharmacy, Faculty of Science, National University of Singapore, 18 Science Drive 4, Singapore 117543. E-mail: aikjiang.lau@nus.edu.sg.

#DMD/2017/078980

Figure Legends

Fig. 1. Chemical structures of DHEA, galeterone, abiraterone acetate, and the other chemicals investigated in the present study.

Fig. 2. DHEA sulfonation catalyzed by cytosol isolated from human liver, intestine, and lung at various concentrations of DHEA. (A) Human liver cytosol (mixed gender; 60 μg protein), (B) human liver cytosol (male; 60 μg protein), (C) human liver cytosol (female; 60 μg protein), (D) human intestinal cytosol (mixed gender; 60 μg protein), or (E) human lung cytosol (mixed gender; 80 μg protein) was incubated at 37°C for 15 min (A-D) or 45 min (E) in an incubation mixture as indicated under Materials and Methods. The concentration of DHEA were 0.0025, 0.005, 0.01, 0.025, 0.05, 0.1, 0.25, 0.5, 0.75, 1, 2.5, and 5 μM . The amount DHEA-S was quantified by UPLC-MS/MS. Velocity of product formation (V) and substrate concentration (S) data were analyzed by non-linear least-squares regression and fitted to the substrate inhibition model. Data are expressed as mean \pm S.D. of three independent experiments conducted on separate occasions.

Fig. 3. Comparative inhibitory effect of galeterone, abiraterone acetate, and other steroidal anti-androgens on DHEA sulfonation catalyzed by cytosol isolated from human liver and intestine. (A) Human liver cytosol (mixed gender), (B) human liver cytosol (male), (C) human liver cytosol (female), or (D) human intestinal cytosol (mixed gender) was incubated at 37°C for 15 min with DHEA (0.5 μM ; 0.25% v/v methanol) and in the presence of 10 μM galeterone, abiraterone acetate, cyproterone acetate, spironolactone, danazol, amoxicillin (negative control), or vehicle (0.25% v/v methanol or acetonitrile) in an incubation mixture as described under Materials and

#DMD/2017/078980

Methods. The amount of DHEA-S was quantified by UPLC-MS/MS. Data were normalized to the amount of DHEA-S formation in the respective vehicle-treated control group and expressed as mean \pm S.D. for three independent experiments conducted on separate occasions. *, significantly different from the vehicle-treated control group ($p < 0.05$). DHEA sulfonation in the vehicle-treated control group was (A) 119 pmol/min/mg protein for human liver cytosol (mixed gender), (B) 87 pmol/min/mg protein for human liver cytosol (male), (C) 80 pmol/min/mg protein for human liver cytosol (female), and (D) 63 pmol/min/mg protein for human intestinal cytosol (mixed gender).

Fig. 4. Concentration-response relationship in the inhibitory effect of galeterone, abiraterone acetate, and other steroidal anti-androgens on human liver cytosolic DHEA sulfonation. Human liver cytosol (mixed gender; 60 μ g) was incubated at 37°C for 15 min with DHEA (0.5 μ M; 0.25% v/v methanol), and with varying concentrations of (A) galeterone, (B) abiraterone acetate, (C) cyproterone acetate, (D) spironolactone, or (E) danazol in an incubation mixture as described under Materials and Methods. The concentrations were 0.1, 0.3, 1, 3, 10, 30 or 100 μ M for cyproterone acetate, spironolactone, and danazol, and 0.01, 0.03, 0.1, 0.3, 1, 3, 10 or 30 μ M for galeterone and abiraterone acetate. Inhibitors were replaced with the respective solvents (0.25% v/v methanol for galeterone, cyproterone acetate, and danazol; 0.25% v/v acetonitrile for spironolactone and abiraterone acetate) in the vehicle-treated control groups. The amount of DHEA-S was quantified by UPLC-MS/MS. Data were normalized to the amount of DHEA-S formation in the respective vehicle-treated control groups and expressed as mean \pm S.D. of three independent experiments conducted on separate occasions. *, significantly different from the vehicle-treated control group ($p < 0.05$).

#DMD/2017/078980

Fig. 5. Lineweaver-Burk plots for the inhibition of human liver cytosolic DHEA sulfonation by galeterone, abiraterone acetate, and other steroidal anti-androgens. Human liver cytosol (mixed gender; 60 μg) was incubated at 37°C for 15 min with varying concentrations of (A) galeterone (0.5, 1, or 2 μM), (B) abiraterone acetate (0.5, 1, or 2 μM), (C) cyproterone acetate (3, 10, or 30 μM), (D) spironolactone (10, 30, or 100 μM), or (E) danazol (2, 5, or 10 μM) in an incubation mixture as described under Materials and Methods. The concentrations of DHEA were 0.2, 0.4, 0.6, and 0.8 μM . Inhibitors were replaced with the respective solvents (0.25% v/v methanol for galeterone, cyproterone acetate, and danazol; 0.25% v/v acetonitrile for spironolactone and abiraterone acetate) in the vehicle-treated control groups. The amount of DHEA-S was quantified by UPLC/MS/MS. Data were fitted to various inhibition models using non-linear regression and expressed as mean \pm S.D. for three independent experiments conducted on separate occasions.

Fig. 6. DHEA sulfonation catalyzed by human SULT2A1, SULT2B1b, and SULT1E1 at various concentrations of DHEA. (A) Recombinant SULT2A1 (2.5 μg protein), (B) SULT2B1b (0.2 μg protein), or (C) SULT1E1 (5 μg protein) enzyme was incubated at 37°C for either (A) 30 min or (B, C) 45 min in an incubation mixture as described under Materials and Methods. The concentrations of DHEA were 0.0025, 0.005, 0.01, 0.025, 0.05, 0.1, 0.25, 0.5, 0.75, 1, 2.5, or 5 μM . The amount of DHEA-S was quantified by UPLC-MS/MS. Data were analyzed by non-linear least-squares regression and fitted to the (A, B) substrate inhibition or (C) Hill model. Data are expressed as mean \pm S.D. of three or four independent experiments conducted on separate occasions.

#DMD/2017/078980

Fig. 7. Differential inhibition of human SULT2A1-, SULT2B1b-, and SULT1E1-catalyzed DHEA sulfonation by galeterone, abiraterone acetate, and other steroidal anti-androgens. Human recombinant (A) SULT2A1 (2.5 μg protein), (B) SULT2B1b (0.2 μg protein), or (C) SULT1E1 (5 μg) enzyme was incubated at 37°C for either (A) 30 min or (B, C) 45 min with DHEA (0.5 μM ; 0.25% v/v methanol), and an anti-androgen (galeterone, abiraterone acetate, cyproterone acetate, spironolactone, or danazol; each at 1, 3, 10, or 30 μM), amoxicillin (10 μM , negative control), quercetin (1 μM , positive control), or vehicle (0.25% v/v methanol or acetonitrile) in an incubation mixture as described under Materials and Methods. The amount of DHEA-S was quantified by UPLC-MS/MS. Data are normalized to the amount of DHEA-S formation in the respective vehicle-treated control group and expressed as mean \pm S.D. for three independent experiments conducted on separate occasions. *, significantly different from the vehicle-treated control group ($p < 0.05$). DHEA sulfonation in the vehicle-treated control group was (A) 1893 pmol/min/mg protein, (B) 5000 pmol/min/mg protein, and (C) 689 pmol/min/mg protein.

Fig. 8. Comparative inhibitory effect of abiraterone acetate and its active metabolite abiraterone on DHEA sulfonation catalyzed by human liver cytosol, SULT2A1, SULT2B1b, and SULT1E1. (A) Human liver cytosol (60 μg protein), (B) SULT2A1 (2.5 μg protein), (C) SULT2B1b (0.2 μg protein), or (D) SULT1E1 (5 μg) enzyme was incubated at 37°C for (A) 15 min, (B) 30 min, or (C, D) 45 min with DHEA (0.5 μM ; 0.25% v/v methanol), and with various concentrations of abiraterone acetate (1, 3, 10, or 30 μM), abiraterone (1, 3, 10, or 30 μM), or vehicle (0.25% v/v methanol or acetonitrile) in an incubation mixture as described under Materials and Methods. The amount of DHEA-S was quantified by UPLC-MS/MS. Data are normalized to the amount of DHEA-S formation in the respective vehicle-treated control group and expressed as mean \pm S.D. for three independent experiments conducted on separate occasions. *, significantly different

#DMD/2017/078980

from the vehicle-treated control group ($p < 0.05$). #, significantly different from the abiraterone acetate-treated group ($p < 0.05$).

Fig. 9. Formation of abiraterone and depletion of abiraterone acetate in human liver cytosol. Human liver cytosol (60 μg protein) was incubated with abiraterone acetate (0.1 μM) or vehicle (0.5% v/v methanol) in an incubation mixture (as described under Materials and Methods) at 37°C for 0, 3, 5, 10, 15, 20, 30, 45, or 60 min. The amount of (A) abiraterone and (B) abiraterone acetate was quantified by UPLC-MS/MS. Data are expressed as mean \pm S.D. for three independent experiments conducted on separate occasions.

Fig. 10. Comparative inhibitory effect of cyproterone acetate and its metabolite cyproterone on DHEA sulfonation catalyzed by human liver cytosol, SULT2A1, SULT2B1b, and SULT1E1. (A) Human liver cytosol (60 μg protein), (B) SULT2A1 (2.5 μg protein), (C) SULT2B1b (0.2 μg protein), or (D) SULT1E1 (5 μg) enzyme was incubated at 37°C for (A) 15 min, (B) 30 min, or (C, D) 45 min with DHEA (0.5 μM ; 0.25% v/v methanol), and with various concentrations of cyproterone acetate (1, 3, 10, or 30 μM), cyproterone (1, 3, 10, or 30 μM), or vehicle (0.25% v/v methanol or acetonitrile) in an incubation mixture as described under Materials and Methods. The amount of DHEA-S was quantified by UPLC-MS/MS. Data are normalized to the amount of DHEA-S formation in the respective vehicle-treated control group and expressed as mean \pm S.D. for three independent experiments conducted on separate occasions. *, significantly different from the vehicle-treated control group ($p < 0.05$). #, significantly different from the cyproterone acetate-treated group ($p < 0.05$).

TABLE 1

Enzyme kinetic analysis of DHEA sulfonation catalyzed by human liver and intestinal cytosol

Velocity of product formation (V) and substrate concentration (S) data were analyzed by non-linear least-squares regression and fitted to the substrate inhibition model. Data are expressed as mean \pm S.D. based on the data shown in Fig. 2.

Cytosol	Apparent V_{\max} (pmol/min/mg protein)	Apparent K_m (μ M)	Apparent K_i (μ M)	V_{\max} / K_m (μ l/min/mg protein)	Enzyme kinetics model
Human Liver (Mixed Gender)	143 \pm 40	0.45 \pm 0.14	2.50 \pm 1.61	323 \pm 15	Substrate inhibition
Human Liver (Male)	83 \pm 21	0.35 \pm 0.15	7.00 \pm 1.76	249 \pm 55	Substrate inhibition
Human Liver (Female)	75 \pm 26	0.36 \pm 0.14	9.84 \pm 4.50	214 \pm 37	Substrate inhibition
Human Intestine (Mixed Gender)	71 \pm 21	0.36 \pm 0.20	2.97 \pm 0.85	215 \pm 51	Substrate inhibition

TABLE 2

Potential *in vivo* relevance of the *in vitro* inhibitory effect of galeterone, abiraterone, and other anti-androgens on DHEA sulfonation catalyzed by human liver cytosol

Shown are mode of inhibition, apparent K_i values, literature values of plasma drug concentrations [I], and calculated R values. Apparent K_i data are expressed as mean \pm S.D. based on the data shown in Fig. 5.

Chemical	Mode of inhibition	Apparent K_i (μM)	Plasma drug concentration [I] (μM)	R Value ($1 + [I]/K_i$) ^a	Reference for [I] Value
Galeterone	Competitive	0.19 ± 0.07	2.81	15.79	(Kramer et al., 2013)
Abiraterone acetate	Competitive	0.47 ± 0.20^e	3.40^b	8.23	(Chi et al., 2015)
			0.65^c	2.38	(Han et al., 2015)
			0.32^d	1.68	(Acharya et al., 2012)
Cyproterone acetate	Competitive (partial)	1.24 ± 0.41	0.61	1.49	(Kuhn et al., 1997)
Spirolactone	Mixed (partial)	4.63 ± 1.79	1.86	1.40	(Karim, 1978)
Danazol	Mixed (partial)	1.90 ± 0.82	0.59	1.31	(Charman et al., 1993)

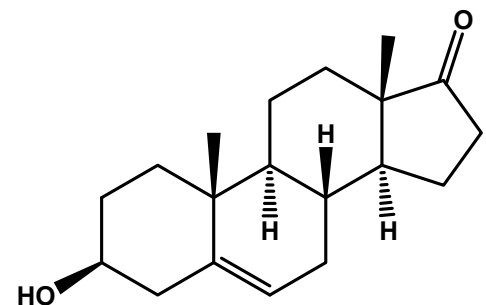
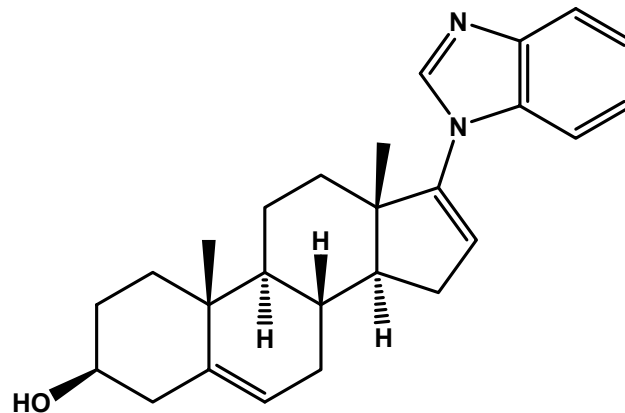
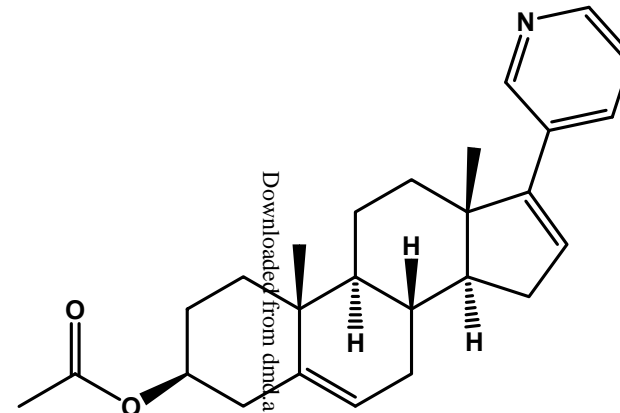
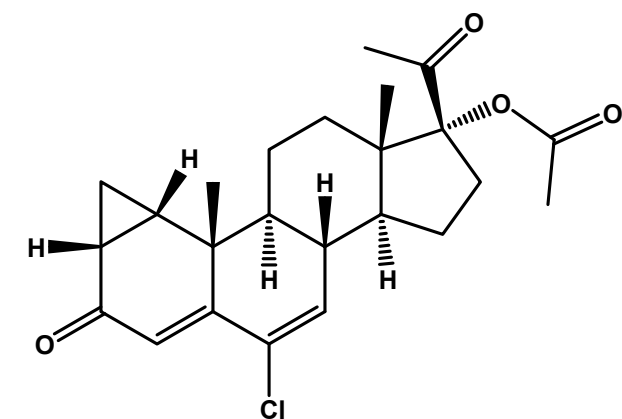
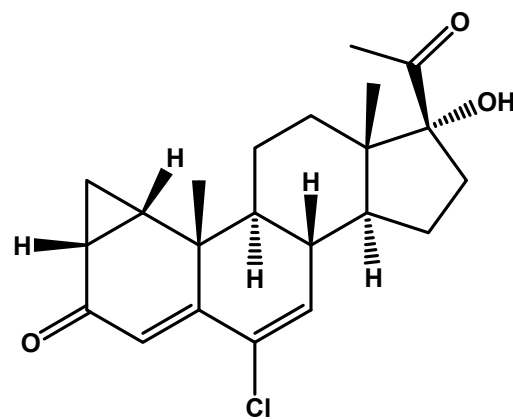
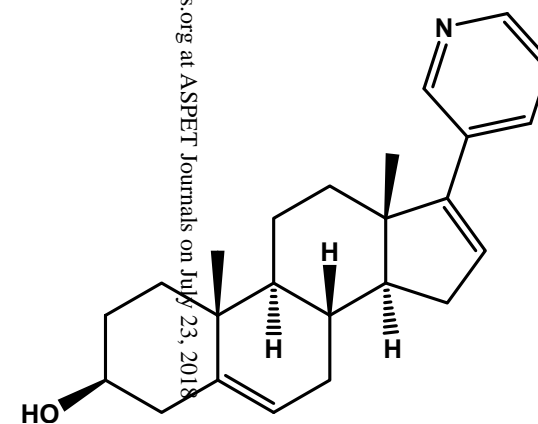
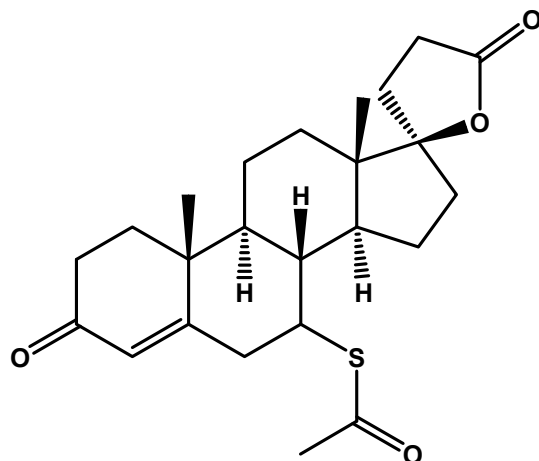
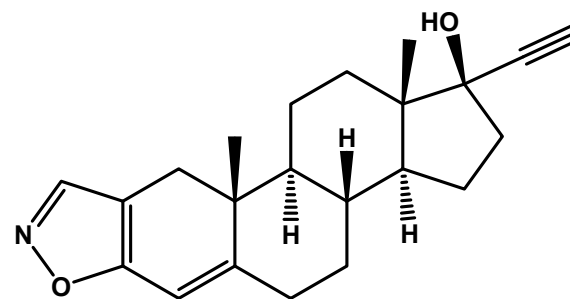
^a, R value was calculated as $1 + [I]/K_i$, where [I] represents the maximal total drug concentration in plasma. According to the U.S. Food and Drug Administration guidelines for drug interaction studies (Food and Drug Administration, 2012) a R value of greater than 1.1 indicates potential *in vivo* inhibition.

^b, administered after food in healthy subjects

^c, patients with metastatic castration-resistant prostate cancer

^d, healthy subjects

^e, The temporal pattern of abiraterone formation and abiraterone acetate depletion suggested that abiraterone, not abiraterone acetate, was responsible for the inhibition of DHEA sulfonation in incubations containing human liver cytosol and abiraterone acetate (Fig. 9). Non-linear least-squares regression analysis of enzyme kinetic data obtained from the same experiment yielded comparable apparent K_i values in incubations containing abiraterone ($0.60 \pm 0.09 \mu\text{M}$) or abiraterone acetate ($0.51 \pm 0.20 \mu\text{M}$).

**DHEA****Galeterone****Abiraterone Acetate****Cyproterone Acetate****Cyproterone****Abiraterone****Spironolactone****Danazol**

