

DMD #21659

## **Isolation and Identification of Urinary Metabolites of Berberine in Rats and Humans**

Feng QIU, Zhiyong ZHU, Ning KANG, Shujuan PIAO, Gengyao QIN, Xinsheng YAO

Department of Natural Products Chemistry, School of Traditional Chinese Materia Medica (F. Q., Z. Z.,

S. P., G. Q., X. Y. ); Department of Biochemistry and Molecular Biology, School of Life Science and

Biopharmaceutics (N. K.), Shenyang Pharmaceutical University, Shenyang, 110016, P. R. China

DMD #21659

a) Running title: Urinary Metabolites of Berberine in Rats and Humans

b) Corresponding author: Feng QIU

Address: Department of Natural Products Chemistry, Shenyang Pharmaceutical University

No.103 Road Wenhua, Shenyang, P.R. China

Post Code: 110016

Telephone: 86-24-2398-6463

Fax: 86-24-2399-3994

E-mail: [fenggju20070118@163.com](mailto:fenggju20070118@163.com)

c) text pages:24;

tables: 2;

figures: 2;

references: 36;

the number of words in the *Abstract*: 128;

the number of words in the *Introduction*: 313;

the number of words in the *Discussion*: 552.

d) Abbreviations: HPLC, high-performance liquid chromatography; TLC, thin-layer chromatography;

EtOH, ethanol; MeOH, methanol; ODS, octadecyl silane; HPLC, high performance liquid

chromatography; NMR, nuclear magnetic resonance; NOE, nuclear overhauser effect; ESI-MS,

electrospray ionization-mass spectrometry; LC/MS<sup>n</sup>, liquid chromatography-mass spectrometry at stage

n.

DMD #21659

## Abstract

The urinary metabolites of berberine, an isoquinoline alkaloid isolated from several Chinese herbal medicines, were investigated in rats and humans. Using macroporous adsorption resin chromatography, open ODS column chromatography, and preparative high performance liquid chromatography, seven metabolites (**HM1-HM7**) were isolated from human urine and five metabolites (**RM1-RM5**) from rat urine following oral administration. Their structures were elucidated by enzymatic deconjugation and analyses of MS,  $^1\text{H-NMR}$  and NOESY spectra. Besides the three known metabolites demethyleneberberine-2-O-sulfate (**HM1**, **RM3**), jatrorrhizine-3-O-sulfate (**HM5**) and thalifendine (**RM5**), six new metabolites were identified, namely, jatrorrhizine-3-O- $\beta$ -D-glucuronide (**HM2**), thalifendine-10-O- $\beta$ -D-glucuronide (**HM3**), berberrubine-9-O- $\beta$ -D-glucuronide (**HM4**, **RM2**), 3,10-demethylpalmatine-10-O-sulfate (**HM6**, **RM4**), columbamin-2-O- $\beta$ -D-glucuronide (**HM7**), and demethyleneberberine-2,3-di-O- $\beta$ -D-glucuronide (**RM1**). These findings suggest that berberine undergoes a similar biotransformation in rats and humans. Possible metabolic pathways of berberine in rats and humans are proposed.

DMD #21659

## Introduction

Berberine is an isoquinoline alkaloid isolated from several Chinese herbal medicines such as *Rhizoma Coptidis*, *Cortex Phellodendri* and *Caulis Mahoniae*. Its chemical structure is 5,8-dihydro-9,10- dimethoxy-6H-Benzo(g)-1,3-benzodioxolo(5,6-a)quinolizine. Berberine exhibits a wide variety of bioactivities such as antidiarrheic (Sack et al., 1982; Taylor et al., 1989), antimicrobial (Kaneda et al., 1991; Yan et al., 2007), hypolipidemic (Kong et al., 2004; Doggrell et al., 2005; Brusq et al., 2006; Cicero et al., 2007), hypoglycemic (Yin et al., 2002; Pan et al., 2003; Lee et al., 2006; Turner et al., 2007; Zhou et al., 2007; Yin et al., 2008), antiarrhythmic (Wang et al., 1994; Law et al., 2001), anticancer (Inoue et al., 2005; Lin et al., 2006; Lin et al., 2007; Piyanuch et al., 2007; Serafim et al., 2007; Gansauge et al., 2007; Yu et al., 2007; Lanvers-Kaminsky et al., 2006), anti-inflammatory (Ckless et al., 1995; Lee et al., 2007), antiviral (Hayashi et al., 2007), antidepressant (Kulkarni et al., 2007; Peng et al., 2007) and hepatoprotective (Zhang et al., 2008) effects. Its chloride salt has been used for several decades in clinical situations to treat gastroenteritis and secretory diarrhoea in China. In recent years, berberine has also shown significant effects in treatment of diabetes mellitus ( Ni, 1988 ), hyperlipemia (Kong et al., 2005), arrhythmia and heart failure (Zeng et al., 1999; Zeng et al., 2003; Law et al., 2001). However, pharmacokinetic studies have indicated that berberine has poor oral bioavailability (Shen et al., 1993; Yu et al., 2000; Zuo et al., 2006) , and a few of the metabolites have been identified in rats (Zuo et al., 2006) and in humans (Pan et al., 2002). To obtain more information about its metabolism in order to improve its clinical applications, we examined the biotransformation of berberine in rats and humans. The present paper describes the isolation and identification of urinary metabolites of berberine in these two species.

DMD #21659

## Materials and Methods

**Materials.** Berberine chloride (purity>99.5%) was supplied by the Northeast General Pharmaceutical Factory (Shenyang, China). Methanol was HPLC grade and water was double distilled in our laboratory. All other reagents were of analytical grade and purchased from Shenyang Chemical Company (Shenyang, China). Normal-phase and reverse-phase preparatory thin-layer chromatography was performed using products from Merck Company. Macroporous resin D101 was purchased from the Chemical Plant of Nankai University (Tianjin, China) and Diaion ion exchange resin HP20 from Mitsubishi Chemical Corporation (Japan). Sephadex LH-20 and ODS were obtained from Pharmacia Company (Freiburg, Germany). Spots on chromatograms were detected with Dragendorff's reagent (a solution of potassium bismuth iodide) which is usually used to visualize alkaloids that have been developed using TLC. Arylsulfatase (3.1.6.1) and  $\beta$ -Glucuronidase (3.2.1.31) were purchased from Sigma.

**Subjects and Dosing Procedure.** Eighty male Wistar rats, from eight to ten weeks old, weighing 200 to 250g, were used in the study of the urinary metabolites of berberine chloride in rats. Subjects were kept in the breeding room for 7 days before the study. Normal food and water were available at all times but withdrawn 12 hr prior to intragastric administration of berberine chloride. Each subject was given an oral dose, 100mg/kg (body weight), of berberine chloride and urine samples were collected for 48 hours.

For the study of the urinary metabolites of berberine chloride in humans, twelve healthy volunteers from 22 to 26 years of age and weighing 60 to 80 kg (all males) participated in this study. Subjects were judged to be in good health based on a medical history, physical examination, and laboratory profiles that were performed within a 2 week period before the start of the study. The study

DMD #21659

followed the 1964 Principles of Helsinki for the ethical treatment of human subjects for biomedical research. Each subject was given an oral dose, 300mg, of berberine chloride, three times a day for 2 days, and the urine was collected between 0 and 72 h.

**Isolation of Metabolites.** The urine samples (rats:3,800mL; human: 16,000mL) were chromatographed on macroporous adsorptive resin D101 and eluted with H<sub>2</sub>O and 95% EtOH. The 95% EtOH eluate was subjected to HP 20 column chromatography using an H<sub>2</sub>O/EtOH solvent system. The fractions eluted by 20% EtOH and 30% EtOH were then fractionated by chromatography on Sephadex LH-20 and RP-18 silica-gel columns with an MeOH-H<sub>2</sub>O solvent system (0-30%). The fractions containing the metabolites underwent fractionation by Sephadex LH-20, RP-8 and RP-18 silica-gel column chromatography with an MeOH-H<sub>2</sub>O solvent system (10-60%) and then purified by preparative HPLC.

**Purification by HPLC.** Preparative HPLC was performed with an ODS column (XTerra<sup>TM</sup> RP18, 7 $\mu$ m, 19 $\times$ 300mm) in a Waters 600 liquid chromatograph equipped with a Waters 490 UV detector. The usual detection wavelength was 340 nm. Elution was carried out with MeOH-H<sub>2</sub>O at a flow rate of 10 ml/min. Elution with MeOH-H<sub>2</sub>O (15:85) yielded RM1 (2.3 mg). Elution with MeOH-H<sub>2</sub>O (16:84) yielded **HM2** (6mg), **HM3** (4mg) and **HM7** (1mg). Elution with MeOH-H<sub>2</sub>O (22:78) yielded **HM1** (40mg), **HM4** (6.1mg), **HM5** (2.2mg) and **HM6** (1.2mg). Elution with MeOH-H<sub>2</sub>O (55:45) yielded **RM5** (10 mg).

**Spectroscopic Methods.** Electrospray ion trap mass spectrometry in multi-stage full scan mode was performed on a Bruker esquire 2000 instrument with a mass range of 25 to 2200 (the mass was calibrated). The instrument was operated in the both positive and negative ion modes, using nitrogen as the nebulizing and dry gas. The CID of the quasi-molecular ion was achieved with helium as the

DMD #21659

collision gas. The ionization was carried out under the following conditions: capillary temperature, 250°C; capillary voltage, 3.0 kV. Sample solutions were directly introduced into the ESI source at a flow rate of 3 $\mu$ L/min by a syringe pump.

NMR spectra were measured on Bruker ARX-600 spectrometer and chemical shifts are given in ppm with tetramethylsilane as an internal standard. **HM1-HM7** and **RM5** were dissolved in DMSO-d<sub>6</sub>, and **RM1** was dissolved in D<sub>2</sub>O:DMSO-d<sub>6</sub>(1:2).

**Enzymatic hydrolysis.** The metabolites (**HM1-HM7** and **RM1**, each 0.2mg) were dissolved in 0.1M acetate buffer (pH5.0). Then, arylsulfatase (100 units) or  $\beta$ -glucuronidase (5000 units) was added and the solution incubated for 4h at 37°C. Following this the reaction solution was chromatographed on an ODS mini-column eluting with distilled water to remove any impurities. The subsequent MeOH eluate was evaporated to give a residue which was analysed by ESI-MS.

DMD #21659

## Results

### Isolation and Structure Elucidation of Berberine Metabolites.

By means of macroporous adsorptive resin chromatography, open ODS column chromatography, and preparative high performance liquid chromatography, five metabolites(**RM1-RM5**) from rat urine and seven metabolites(**HM1-HM7**) from human urine were isolated following oral administration of berberine chloride, and their structures were identified on the basis of enzymatic hydrolysis, ESI-MS, <sup>1</sup>H-NMR and NOESY spectra.

In the ESI-MS spectra (Fig. 1), removal of masses of 80 or 176 from the quasi-molecular ions [M - Cl]<sup>+</sup> of the metabolites showed that they were sulfate or glucuronide conjugates. The evidence provides useful information to help in the structural identification of the berberine metabolites.

### Sulfate-conjugated Metabolites.

**HM1(RM3)** and **HM5** were identified as demethyleneberberine-2-O-sulfate and jatrorrhizine-3-O-sulfate, respectively, by enzymatic hydrolysis, and further comparison of MS, and NMR data (Table 1 and 2) with those in the literature [Pan et al., 2002].

**HM6(RM4)**: Yellow needle crystal, giving a positive reaction to Dragendorff's reagent. The ESI-MS of **HM6** gave the quasimolecular ion [M - Cl]<sup>+</sup> at m/z 404 and [M - Cl + Na - H]<sup>+</sup> at m/z 426. Bombardment of m/z 426 afforded a fragment ion [M - Cl + Na - H - SO<sub>3</sub>]<sup>+</sup> at m/z 346. Combined with enzymatic hydrolysis data, **HM6** was deduced to be a sulfate-conjugated metabolite.

In the <sup>1</sup>H-NMR spectrum, the skeleton proton signals (Table 2) of the parent drug remained except for those of the substituent groups. The linked positions of two methoxyl groups were established by the NOESY spectrum: the methoxyl signal at δ4.24 correlated with that of H-8 at δ9.83, and the methoxyl group at δ3.95 correlated the H-1 at δ7.72, indicating that two methoxyl groups were linked at C-9 and



DMD #21659

C-2. Thus, the sulfate group must be linked to C-3 or C-10. Furthermore, 9-OCH<sub>3</sub> and H-11 shifted downfield by 0.1ppm, and H-4 hardly shifted at all, so that it was concluded that the sulfate group was located at C-10. Thus, **HM6** was identified as 3,10-Demethylpalmatine-10-O-sulfate.

#### Glucuronide-conjugated Metabolites.

**HM2**: Yellow powder, giving a positive reaction to Dragendorff's reagent. The ESI-MS of **HM2** gave the quasi-molecular ion [M - Cl]<sup>+</sup> at m/z 514. Bombardment of 514 afforded the fragment ion [M - Cl - C<sub>6</sub>H<sub>8</sub>O<sub>6</sub>]<sup>+</sup> at m/z 338, suggesting that **HM2** might be a glucuronide conjugate. This was further confirmed by enzymatic hydrolysis of **HM2**, in which the aglycone ion fragment at m/z 338 was detected by ESI-MS. Comparison of the <sup>1</sup>H-NMR data (Table 1) of the aglycone of **HM2** with those of berberine indicated many similarities except for the loss of the characteristic methylene signal and the appearance of a new methoxyl signal.

The linked positions of the newly formed methoxyl group and the glucuronic acid moiety were established by the NOESY spectrum, in which H-1 (δ7.73) exhibited correlations with H-13 (δ9.04) and 2-OMe (δ3.93), H-4 (δ7.19) exhibited correlations with H-1' (δ5.14) and H-5 (δ3.17), indicating that the glucuronic acid moiety was located at C-3 and the newly formed methoxyl group was located at C-2. The β-configuration of the glucuronic acid moiety was identified based on the coupling constants of the anomeric proton (δ5.14, J=7.0Hz). Therefore, the structure of **HM2** was identified as jatrorrhizine-3-O-β-D-glucuronide.

**HM3**: Yellow powder, giving a positive reaction to Dragendorff's reagent. The ESI-MS of **HM3** gave the quasi-molecular ion [M - Cl]<sup>+</sup> at m/z 498. Bombardment of 498 afforded the fragment ion [M - Cl - C<sub>6</sub>H<sub>8</sub>O<sub>6</sub>]<sup>+</sup> at m/z 322, suggesting that **HM3** might be a glucuronide conjugate. This was further confirmed by enzymatic hydrolysis of **HM3**, in which the aglycone ion fragment at m/z 322 was

DMD #21659

detected by ESI-MS. In comparison with the  $^1\text{H}$ -NMR spectrum of berberine, the other proton signals (Table 1) were observed in **HM2** except for the loss of one methoxy group. The linked positions of the remaining methoxyl group and the glucuronic acid moiety were established from the NOESY spectrum. In this, H-11( $\delta$ 8.14) exhibited correlations with H-12( $\delta$ 7.89) and H-1' ( $\delta$ 5.15), indicating that the glucuronic acid moiety was located at C-10 and the remaining methoxyl group was consequently located at C-9. The  $\beta$ -configuration of the glucuronic acid moiety was confirmed based on the coupling constants of the anomeric proton ( $\delta$ 5.15,  $J=7.5\text{Hz}$ ). Thus, the structure of **HM3** was identified as thalifendine-10-O- $\beta$ -D-glucuronide.

**HM4 (RM2)**: Yellow amorphous powder, giving a positive reaction to Dragendorff's reagent. The ESI-MS of **HM4** gave the quasi-molecular ion  $[\text{M} - \text{Cl}]^+$  at  $m/z$  498. Bombardment of 498 afforded the fragment ion  $[\text{M} - \text{Cl} - \text{C}_6\text{H}_8\text{O}_6]^+$  at  $m/z$  322, suggesting that **HM4** was a glucuronide conjugate. This was further confirmed by enzymatic hydrolysis of **HM4**. Comparison of the  $^1\text{H}$ -NMR data (Table 1) of **HM4** with those of **HM3** indicated that **HM4** was an isomer of **HM3**. The linked positions of the methoxyl group were established from the NOESY spectrum, in which H-8( $\delta$ 10.15) exhibited correlations with H-6( $\delta$ 5.10,  $\delta$ 4.85), and H-11( $\delta$ 8.19) exhibited correlations with H-12( $\delta$ 8.04) and the methoxyl group ( $\delta$ 4.04). Therefore, the methoxyl group was located at C-10 and consequently the glucuronic acid moiety must be located at C-9. The  $\beta$ -configuration of the glucuronic acid moiety was confirmed based on the coupling constants of the anomeric proton ( $\delta$ 4.82,  $J=7.0\text{Hz}$ ). Thus, the structure of **HM4** was identified as Berberrubine-9-O- $\beta$ -D-glucuronide.

**HM7**: Yellow powder, giving a positive reaction to Dragendorff's reagent. The ESI-MS of **HM7** gave the quasi-molecular ion  $[\text{M} - \text{Cl}]^+$  at  $m/z$  514. Bombardment of 514 afforded the fragment ion  $[\text{M} - \text{Cl} - \text{C}_6\text{H}_8\text{O}_6]^+$  at  $m/z$  338, suggesting that **HM7** might be an isomer of **HM2**. This was further confirmed

DMD #21659

by enzymatic hydrolysis of **HM7**, in which the aglycone ion fragment at  $m/z$  338 was detected by ESI-MS. A comparison of the  $^1\text{H}$ -NMR spectrum of **HM7** with that of **HM2** showed that there were many similarities except for the downfield chemical shifts of H-1 by  $\delta 0.36$  (Table 1 and 2). The linked positions of the methoxyl group ( $\delta 3.88$ ) and the glucuronic acid moiety were established from the NOESY spectrum, in which H-1 ( $\delta 8.09$ ) correlated with both H-13 ( $\delta 9.15$ ) and H-1' ( $\delta 5.06$ ), and **H-4** ( $\delta 7.12$ ) correlated with the methoxyl group ( $\delta 3.88$ ), indicating that the glucuronic acid moiety was located at C-2 and the methoxyl group ( $\delta 3.88$ ) was consequently located at C-3. The  $\beta$ -configuration of the glucuronic acid moiety was confirmed based on the coupling constants of the anomeric proton ( $\delta 5.06$ ,  $J=7.5\text{Hz}$ ). Therefore, the structure of **HM7** was identified as Columbamine-2-O- $\beta$ -D-glucuronide.

**RM1**: Yellow powder, giving a positive reaction to Dragendorff's reagent. The ESI-MS of **RM1** gave a quasimolecular ion  $[\text{M} - \text{Cl}]^+$  at  $m/z$  676. Bombardment of 676 afforded the fragment ion  $[\text{M} - \text{C}_6\text{H}_8\text{O}_6]^+$  at  $m/z$  500, and consequent bombardment of 500 yielded  $[\text{M} - \text{Cl} - 2 \times \text{C}_6\text{H}_8\text{O}_6]^+$  at  $m/z$  324, suggesting that **RM1** might be a diglucuronide conjugate. This was further confirmed by enzymatic hydrolysis of **RM1**, in which the aglycone ion fragment at  $m/z$  324 was detected by ESI-MS. In comparison with the  $^1\text{H}$ -NMR spectrum of berberine, most of the skeleton proton signals (Table 2) remained in **RM1** except for loss of the characteristic methylene signal. The linked positions of the two glucuronic acid moieties and the two methoxyl groups were established by NOESY. The two anomeric protons at  $\delta 5.12$  ( $d, J=6.0\text{Hz}$ ) and  $\delta 5.04$  ( $d, J=7.0\text{Hz}$ ) correlated with H-1 ( $\delta 7.82$ ) and H-4 ( $\delta 7.17$ ), respectively, indicating that the two glucuronic acid moieties were located at C-2 and C-3, respectively. The two methoxyl groups at  $\delta 3.97$  (s) and  $\delta 4.01$  (s) correlated with H-11 ( $\delta 8.03$ ,  $d, J=9.0\text{Hz}$ ) and H-8 ( $\delta 9.63$ ), respectively, suggesting that they should be linked to C-10 and C-9, respectively. The

DMD #21659

$\beta$ -configurations of the two glucuronic acids moieties were confirmed from the coupling constants of the two anomeric protons ( $\delta$ 5.12,  $J=6.0\text{Hz}$ ;  $\delta$ 5.04,  $J=7.0\text{Hz}$ ). Therefore, the structure of **RM1** was finally determined as demethyleneberberine-2,3-di-O- $\beta$ -D-glucuronide.

#### **Unconjugated Metabolite.**

**RM5**: red powder, giving a positive reaction to Dragendorff's reagent. The ESI-MS of **RM5** gave the quasimolecular ion  $[M - Cl]^+$  at  $m/z$  322 which is 14 mass units less than that of berberine. Comparison of the  $^1\text{H-NMR}$  data (Table 2) with those of berberine showed there were many similarities except for the disappearance of one methyl group. The remaining methoxyl group was assigned to 9-OMe based on the NOESY spectrum, in which the methoxyl signal ( $\delta$ 4.05) showed a correlation with H-8 ( $\delta$ 9.71). Following comparison of the  $^1\text{H-NMR}$  data with those in the literature (Niu et al., 2006), **RM5** was identified as thalifendine.

DMD #21659

## Discussion

Structural elucidation of metabolites is one of the most challenging tasks in drug metabolism studies. In recent years, comparisons of ESI-MS<sup>n</sup> data and HPLC retention times with synthetic standards are usually used to identify the structures of metabolites. However, when the standards are difficult to synthesize, some metabolite structures deduced only from LC/MS<sup>n</sup> data may not be correct, especially in the case of the presence of isomeric metabolites. In our study, three groups of isomers (**HM1** and **HM6**; **HM2** and **HM7**; **HM3** and **HM4**) were obtained, and they had identical LC/MS<sup>n</sup> data. Therefore, their exact structures could not be identified from only LC/MS<sup>n</sup> data (Zhu et al., 2007). In these cases, preparation of metabolites and further identification based on NMR data is needed. Of course, the direct isolation of the metabolites from urine, bile, or feces of humans or animals can be difficult, but it is the most reliable method for the identification of metabolites. We have determined the definitive structures of nine metabolites of berberine by enzymatic hydrolysis, and examination of MS and NMR spectra. These results are important for a better understanding its in vivo metabolic fate and disposition in rats and humans.

In this study, nine urinary metabolites of berberine in rats and humans were isolated and identified. Based on the metabolites, it is suggested that berberine is metabolized in both rats and humans mainly involving 2,3-OCH<sub>2</sub>O and 9,10-OCH<sub>3</sub> by cleavage of the dioxymethylene five-membered ring or demethylation to form the corresponding phase I metabolites, some of which then underwent conjugation with glucuronic acid or sulphuric acid to form phase II metabolites. Most of the final metabolites were sulfate or glucuronide conjugates. These metabolites are very polar and are easily excreted.

In order to examine the possible site of metabolism, we analyzed the gastrointestinal contents of rats

DMD #21659

4 hours after oral administration of berberine, and could not detect any metabolites, indicating that berberine is relatively stable in the gastrointestinal tract. However, we also investigated the urinary metabolites of berberine after intraperitoneal injection, and obtained the same metabolites as those after oral administration, implying that the metabolites of berberine are formed after absorption rather than in gastrointestinal tract. Based on the structures of the metabolites isolated from the urine, possible metabolic pathways in rats and humans are proposed (Fig. 2 ).

Although berberine exhibits a variety of pharmacological effects in clinical situations, its poor oral bioavailability makes it hard for us to understand its clinical application for treatment of diabetes mellitus ( Ni, 1988 ), hyperlipemia (Kong et al., 2005), arrhythmia and heart failure (Zeng et al., 1999; Zeng et al., 2003; Law et al., 2001). This study demonstrated that the absorbed berberine is easily metabolized in vivo and its an extensive biotransformation may be one of the main reasons for its low oral bioavailability

Several reports have showed that a high concentration is necessary for berberine to display its in vitro bioactivities (Kong et al., 2005; Yin et al., 2005; Piyanuch et al., 2007). However, the blood-berberine concentration in animals or humans was very low when given orally in experimental or clinical doses (Shen et al., 1993; Yu et al., 2000), suggesting that the berberine metabolites might be responsible for the pharmacological effects. The bioactivities of the berberine metabolites including the corresponding phase I metabolites are now under investigation.

DMD #21659

### **Acknowledgements**

The authors would like to thank Dr. David Jack (United Kingdom) for the language check and the editorial assistance.

DMD #21659

## References

- Brusq JM, Ancellin N, Grondin P, Guillard R, Martin S, Saintillan Y, Issandou M (2006) An additional mechanism for the hypolipidemic effects of Berberine. *J Lipid Res* **47**:1281-1288.
- Cicero AF, Rovati LC, Setnikar I (2007) Eulipidemic effects of berberine administered alone or in combination with other natural cholesterol-lowering agents. A single-blind clinical investigation. *Arzneimittelforschung*. **57**:26-30.
- Donowitz M, Wicks J, Sharp GW (1986) Drug therapy for diarrheal diseases: a look ahead. *Rev Infect Dis*. **8** Suppl 2:S188-201
- Doggrell SA (2005) Berberine--a novel approach to cholesterol lowering. *Expert Opin Investig Drugs*. **14**: 683-685.
- Hayashi K, Minoda K, Nagaoka Y, Hayashi T, Uesato S (2007) Antiviral activity of berberine and related compounds against human cytomegalovirus. *Bioorg Med Chem Lett*. **17**:1562-1564.
- Inoue K, Kulsum U, Chowdhury SA, Fujisawa S, Ishihara M, Yokoe I, Sakagami H (2005) Tumor-specific cytotoxicity and apoptosis-inducing activity of berberines. *Anticancer Res* **25**: 4053-4059.
- Ivanovska N, Philipov S (1996) Study on the anti-inflammatory action of Berberis vulgaris root extract, alkaloid fractions and pure alkaloids. *Int J Immunopharmacol* **18**: 553-561
- Kong W, Wei J, Abidi P, Lin M, Inaba S, Li C, Wang Y, Wang Z, Si S, Pan H, Wang S, Wu J, Lau CW, Yao XQ, Chen ZY, Ko WH, Huang Y (2001) Cardiovascular actions of berberine. *Cardiovasc Drug Rev* **19**: 234-244.



DMD #21659

- Kulkarni SK, Dhir A (2007) Possible involvement of L-arginine-nitric oxide (NO)-cyclic guanosine monophosphate (cGMP) signaling pathway in the antidepressant activity of berberine chloride. *Eur J Pharmacol* **569**: 77-83.
- Kuo CL, Chi CW, Liu TY (2004) The anti-inflammatory potential of berberine in vitro and in vivo. *Cancer Lett* **203**: 127-137.
- Lanvers-Kaminsky C, Nolting DM, Köster J, Schröder A, Sandkötter J, Boos J (2006) In-vitro toxicity of Ukrain against human Ewing tumor cell lines. *Anticancer Drugs* **17**:1025-1030.
- Lee CH, Chen JC, Hsiang CY, Wu SL, Wu HC, Ho TY (2007) Berberine suppresses inflammatory agents-induced interleukin-1beta and tumor necrosis factor-alpha productions via the inhibition of IkappaB degradation in human lung cells. *Pharmacol Res* **56**: 193-201.
- Lin CC, Kao ST, Chen GW, Ho HC, Chung JG (2006) Apoptosis of human leukemia HL-60 cells and murine leukemia WEHI-3 cells induced by berberine through the activation of caspase-3. *Anticancer Res* **26(1A)**: 227-242.
- Lin JP, Yang JS, Chang NW, Chiu TH, Su CC, Lu KW, Ho YT, Yeh CC, Mei-Dueyang , Lin HJ, Chung JG (2007) GADD153 mediates berberine-induced apoptosis in human cervical cancer Ca ski cells. *Anticancer Res* **27(5A)**: 3379-3386.
- Ni YX (1988) Therapeutic effect of berberine on 60 patients with type II diabetes mellitus and experimental research. *Zhong Xi Yi Jie He Za Zhi* **8**: 711-713, 707.
- Niu F, Xie G, Cu IZ , Chen F, Tu PF (2006) Chemical Constituents from Roots of *Semiaquilegia adoxoides*. *J Chin Pharm Sci* **15**: 251-254.
- Pan JF, Yu,C, Zhu DY, Zhang H, Zeng JF, Jiang SH, Ren JY (2002) Identification of three sulfate-conjugate metabolites of berberine chloride in health volunteers' urine after oral administration.

DMD #21659

*Acta Pharmacol Sin* **21**: 77-82.

Pan GY, Huang ZJ, Wang GJ, Fawcett JP, Liu XD, Zhao XC, Sun JG, Xie YY (2003) The antihyperglycaemic activity of berberine arises from a decrease of glucose absorption. *Planta Med* **69**: 632-636.

Piyanuch R, Sukthankar M, Wandee G, Baek SJ (2007) Berberine, a natural isoquinoline alkaloid, induces NAG-1 and ATF3 expression in human colorectal cancer cells. *Cancer Lett* **258**: 230-240.

Sack RB, Froehlich JL (1982) Berberine inhibits intestinal secretory response of *Vibrio cholerae* and *Escherichia coli* enterotoxins. *Infect Immun* **35**:471-475.

Serafim TL, Oliveira PJ, Sardao VA, Perkins E, Parke D, Holy J (2008) Different concentrations of berberine result in distinct cellular localization patterns and cell cycle effects in a melanoma cell line. *Cancer Chemother Pharmacol* **61**: 1007-1018.

Shen Mei-Pin, Sun Qi, Wang Hong (1993) Studies on the intravenous pharmacokinetics and oral absorption of berberine HCl in beagle dogs. *Chin Pharmacol Bull* **9**:64-67.

Taylor CE, Greenough WB 3rd (1989) Control of diarrheal diseases. *Annu Rev Public Health*. **10**:221-244.

Turner N, Li JY, Gosby A, To SW, Cheng Z, Miyoshi H, Taketo MM, Cooney GJ, Kraegen EW, James DE, Hu LH, Li J, Ye JM (2008) Berberine, and its more Biologically Available Derivative Dihydroberberine, Inhibit Mitochondrial Respiratory Complex I: A Mechanism for the Action of Berberine to Activate AMPK and Improve Insulin Action. *Diabetes* **57**: 1414-1418.

Yan D, Jin C, Xiao XH, Dong XP (2008) Antimicrobial properties of berberine alkaloids in *Coptis chinensis* Franch by microcalorimetry. *J Biochem Biophys Methods* **70**: 845-849.

DMD #21659

- Yin J, Gao Z, Liu D, Liu Z, Ye J (2008) Berberine improves glucose metabolism through induction of glycolysis. *Am J Physiol Endocrinol Metab* **294**: E148-156.
- Yin J, Hu R, Chen M, Tang J, Li F, Yang Y, Chen J (2002) Effects of berberine on glucose metabolism in vitro. *Metabolism* **51**:1439-1443.
- Yu FS, Yang JS, Lin HJ, Yu CS, Tan TW, Lin YT, Lin CC, Lu HF, Chung JG (2007) Berberine inhibits WEHI-3 leukemia cells in vivo. *In Vivo* **21**: 407-412.
- Wang Y, Li Z, Liu J, Jiang JD (2004) Berberine is a novel cholesterol-lowering drug working through a unique mechanism distinct from statins. *Nat Med* **10**:1344-1351.
- Wang YX, Yao XJ, Tan YH (1994) Effects of berberine on delayed after depolarizations in ventricular muscles in vitro and in vivo. *J Cardiovasc Pharmacol* **23**: 716-722.
- Yu Shen, Zhang Hui, PanJun Fang, Hong Youcai, Ren Jianying, Zhu dayuan, Xu Xiurong (2000) Determination and Preliminary studies of Metabolism of Berberine in Human Urine after oral administration. *Chin J Clin Pharmacol* **16**: 36-39.
- Zeng XH, Zeng XJ, Li YY (2003) Efficacy and safety of berberine for congestive heart failure secondary to ischemic or idiopathic dilated cardiomyopathy. *Am J Cardiol* **92**:173-176
- Zeng X, Zeng X (1999) Relationship between the clinical effects of berberine on severe congestive heart failure and its concentration in plasma studied by HPLC. *Biomed Chromatogr* **13**: 442-444
- Zhang BJ, Xu D, Guo Y, Ping J, Chen LB, Wang H (2008) Protection by and anti-oxidant mechanism of berberine against rat liver fibrosis induced by multiple hepatotoxic factors. *Clin Exp Pharmacol Physiol* **35**:303-309
- Zhou L, Yang Y, Wang X, Liu S, Shang W, Yuan G, Li F, Tang J, Chen M, Chen J (2007) Berberine stimulates glucose transport through a mechanism distinct from insulin. *Metabolism* **56**: 405-412.

DMD #21659

Zhu M, Han F, Chen H, Peng Z, Chen Y (2007) Identification of palmatine and its metabolites in rat urine by liquid chromatography/tandem mass spectrometry. *Rapid Commun Mass Spectrom.*

**21**:2019-2022.

Zuo F, Nakamura N, Akao T, Hattori M (2006) Pharmacokinetics of berberine and its main metabolites in conventional and pseudo germ-free rats determined by liquid chromatography/ion trap mass spectrometry. *Drug Metab Dispos* **34**: 2064-2072.

DMD #21659

### **Footnotes**

This study was supported by the Educational Foundation of Liaoning Province (20060877) and the Science and Technology Foundation of Shenyang (1063306-1-00).

DMD #21659

### Legends for Figures

Fig.1. ESI/MS spectra of  $[M-Cl]^+$  ion of berberine metabolites **HM1**(A), **HM2**(B), **HM3**(C), **HM5**(D),

**RM1**(E) and **RM5**(F) in rat and human urine

Fig.2. Structures of berberine metabolites in rat or human urine and possible metabolic pathways for their production

DMD #21659

Table 1 <sup>1</sup>H-NMR data of berberine and its metabolites **HM1-4** in humans and rats

NO	berberine	HM1(RM3)	HM2	HM3	HM4(RM2)
1	7.79(1H,s)	8.02(1H,s)	7.73(1H,s)	7.82(1H,s)	7.77(1H,s)
4	7.09(1H,s)	6.92(1H,s)	7.19(1H,s)	7.09(1H,s)	7.10(1H,s)
5	3.22 (2H, t ,5.6Hz)	3.19 (2H, t ,5.6Hz)	3.17(2H,o)	3.21(2H,o)	3.24(2H,o)
6	4.95 (2H, t ,5.6Hz)	4.93 (2H, t ,5.6Hz)	4.94 (2H,m)	4.92 (2H,m)	5.10(1H,m);4.85(1H,m)
8	9.91(1H,s)	9.85(1H,s)	9.93(1H,s)	9.84(1H,s)	10.15(1H,s)
11	8.20 (1H, d ,8.7Hz)	8.19 (1H, d ,9.2Hz)	8.21(1H, d ,9.2Hz)	8.14(1H, d ,9.0Hz)	8.19(1H, d ,9.2Hz)
12	8.01 (1H, d ,8.7Hz)	8.11(1H, d ,9.2Hz)	8.04(1H, d ,9.2Hz)	7.89(1H, d ,9.0Hz)	8.04(1H, d ,9.2Hz)
13	8.96(1H,s)	8.81(1H,s)	9.04(1H,s)	9.01(1H,s)	8.89(1H,s)
2,3-OCH <sub>2</sub> O	6.17(2H,s)			6.18(2H,s)	6.18(2H,s)
2-OCH <sub>3</sub>			3.93(3H,s)		
9-OCH <sub>3</sub>	4.10(3H,s)	4.09(3H,s)	4.10(3H,s)	4.14(3H,s)	
10-OCH <sub>3</sub>	4.07(3H,s)	4.06(3H,s)	4.08(3H,s)		4.04(3H,s)
3-OH		9.78(1H,s)			
GlcUA-1'			5.14(1H, d ,7.0Hz)	5.15(1H, d ,7.5Hz)	4.82(1H, d ,7.0Hz)

Notes: a) all spectra were recorded on a AV-600 spectrometer, in DMSO-d<sub>6</sub>.

b) s,singlet; d,doublet; t,triplet; m, multiplet; o, overlapped

DMD #21659

Table 2 <sup>1</sup>H-NMR data of berberine metabolites **HM5-7**, **RM1** and **RM5** in humans and rats

NO	HM5	HM6(RM4)	HM7	RM1	RM5
1	7.73(1H,s)	7.72(1H,s)	8.09(1H,s)	7.82(1H,s)	7.52(1H,s)
4	7.57(1H,s)	6.83(1H,s)	7.12(1H,s)	7.17(1H,s)	7.06(1H,s)
5	3.20 (2H, t ,6.2Hz)	3.13 (2H, t ,6.0Hz)	3.23(2H,o)	3.15(2H,o)	3.18 (2H, t ,6.0Hz)
6	4.95 (2H, t ,6.2Hz)	4.88 (2H, t ,6.0Hz)	4.96(2H,m)	4.76(2H,m)	4.89 (2H, t ,6.0Hz)
8	9.91(1H,s)	9.83(1H,s)	9.87(1H,s)	9.63(1H,s)	9.71(1H,s)
11	8.22(1H, d ,9.2Hz)	8.30(1H, d ,9.0Hz)	8.20(1H, d ,9.0Hz)	8.03(1H, d ,9.0Hz)	7.84(1H, o)
12	8.05(1H, d ,9.2Hz)	7.84(1H, d ,9.0Hz)	8.02(1H, d ,9.0Hz)	7.99(1H, d ,9.0Hz)	7.84(1H, o)
13	9.05(1H,s)	8.93(1H,s)	9.15(1H,s)	8.72(1H,s)	8.84(1H,s)
2,3-OCH <sub>2</sub> O					6.15(2H,s)
2-OCH <sub>3</sub>	3.93(3H,s)	3.95(3H,s)			
3-OCH <sub>3</sub>			3.88(3H,s)		
9-OCH <sub>3</sub>	4.10(3H,s)	4.24(3H,s)	4.09(3H,s)	4.01(3H,s)	4.05(3H,s)
10-OCH <sub>3</sub>	4.08(3H,s)		4.06(3H,s)	3.97(3H,s)	
GlcUA-1'			5.06(1H, d ,7.5Hz)	5.12(1H, d ,6.0Hz)	
GlcUA-1''				5.04(1H, d ,7.0Hz)	

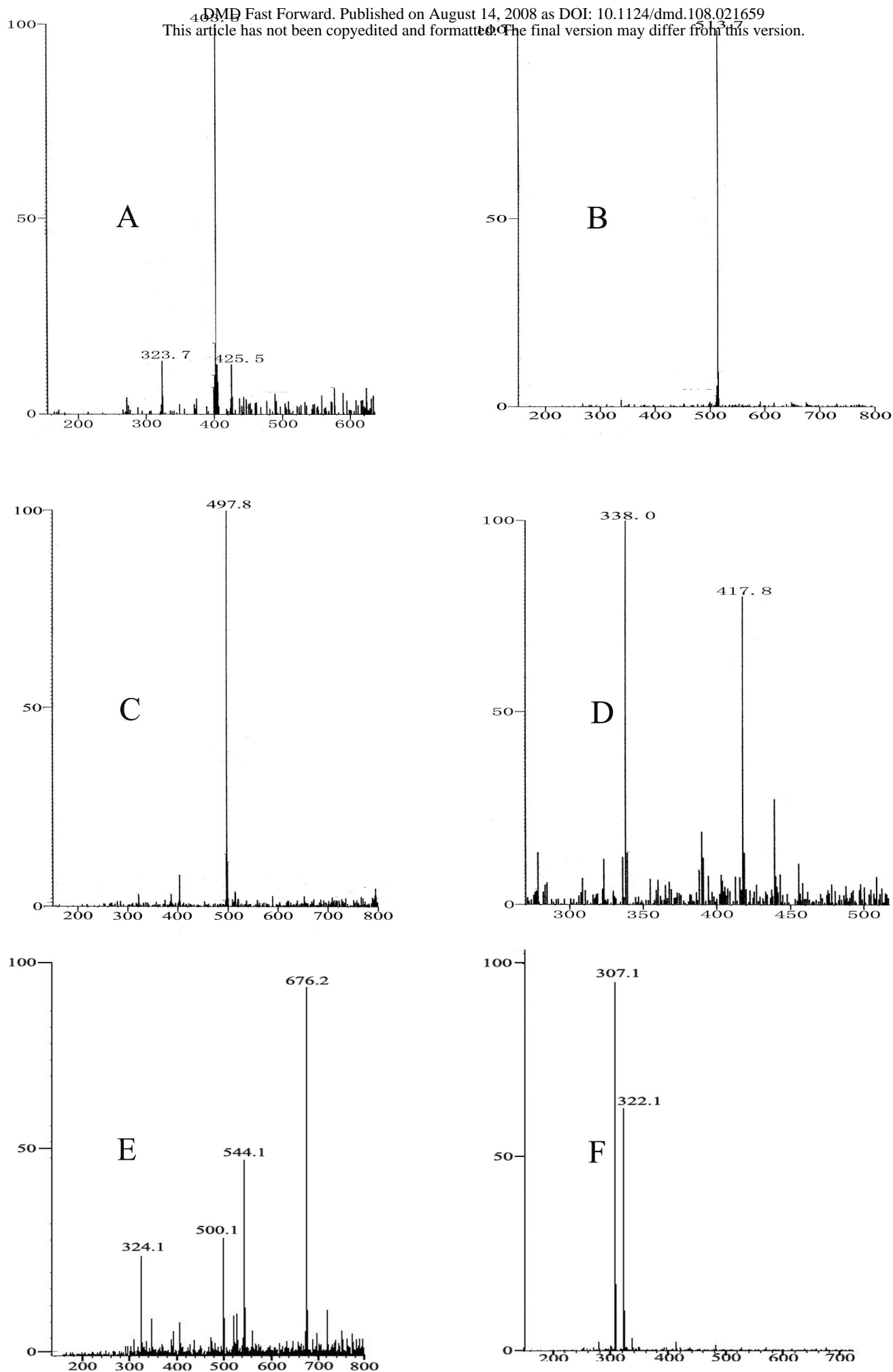
Notes: a) all spectra were recorded on a AV-600 spectrometer, in DMSO-d<sub>6</sub> except that RM1 were dissolved in D<sub>2</sub>O:DMSO-d<sub>6</sub>(1:2).

b) s,singlet; d,doublet; t,triplet; m, multiplet; o, overlapped



# Figure 1

DMD Fast Forward. Published on August 14, 2008 as DOI: 10.1124/dmd.108.021659  
This article has not been copyedited and formatted. The final version may differ from this version.



DMD Fast Forward. Published on August 14, 2008 as DOI: 10.1124/dmd.108.021659  
This article has not been copyedited and formatted. The final version may differ from this version.

