

DMD # 82487

Identification and Characterization of a Selective Human Carbonyl Reductase 1 Substrate

Diane Ramsden, Dustin Smith, Raquel Arenas, Kosea Frederick, and Matthew A. Cerny

Drug Metabolism and Pharmacokinetics, Boehringer Ingelheim Pharmaceuticals, Inc., Ridgefield,
Connecticut (DR, DS, RA, KF, MAC)

DMD # 82487

Running Title: Identification of a CBR1 Selective Substrate

Corresponding Author: Matthew A. Cerny

Pharmacokinetics, Dynamics and Metabolism

Pfizer, Inc.

Eastern Point Rd.

Groton, CT 06340

Telephone: (860) 441-0223

Fax: (860) 686-7629

Email: matthew.cerny@pfizer.com

Number of text pages: 24

Number of Tables: 2

Number of figures: 6

Number of references: 34

Number of words in abstract: 232

Number of words in introduction: 572

Number of words in Discussion: 1194

ABBREVIATIONS

P450, cytochrome P450; CBR1, carbonyl reductase 1; CBR3, human carbonyl reductase 3; CBR4, human carbonyl reductase 4; RAAS, renin-angiotensin aldosterone system; ACEi, angiotensin converting enzyme inhibitors; AKR, aldo-keto reductase; ARB, angiotensin receptor blocker; CL_{int} , intrinsic clearance; HLCyt, human liver cytosol; HLM, human liver microsomes; LC/MS/MS, liquid chromatography coupled with tandem mass spectrometry; LCyt, liver cytosol; MRA, mineralocorticoid receptor antagonist; NADPH, β -nicotinamide adenine dinucleotide phosphate reduced form; NADH, β -nicotinamide adenine dinucleotide reduced form; IS, internal standard; SDR, short-chain dehydrogenase/reductase.

DMD # 82487

ABSTRACT

During drug discovery efforts targeting inhibition of cytochrome P450 11B2 (CYP11B2)-mediated production of aldosterone as a therapeutic approach for the treatment of chronic kidney disease and hypertension, (*S*)-6-(5-fluoro-4-(1-hydroxyethyl)pyridin-3-yl)-3,4-dihydro-1,8-naphthyridine-1(2*H*)-carboxamide (**1**) was identified as a potent and selective inhibitor of CYP11B2. Pre-clinical studies characterized **1** as low clearance in both *in vitro* test systems and *in vivo* in pre-clinical species. Despite low metabolic conversion, an active ketone metabolite (**2**), was identified from *in vitro* metabolite identification studies. Due to the inhibitory activity of **2** against CYP11B2 as well as the potential for it to undergo reductive metabolism back to **1**, the formation and elimination of **2** were characterized and are the focus of this manuscript. A series of *in vitro* investigations determined that **1** was slowly oxidized to **2** by P450 2D6, 3A4, and 3A5, followed by stereoselective reduction back to **1** and not its enantiomer (**3**). Importantly, reduction of **2** was mediated by an NADPH-dependent, cytosolic enzyme. Studies with human cytosolic fractions from multiple tissues, selective inhibitors, and recombinantly expressed enzymes indicated that carbonyl reductase 1 (CBR1) is responsible for this transformation in humans. Carbonyl reduction is emerging as an important pathway for endogenous and xenobiotic metabolism. With a lack of selective substrates and inhibitors to enable characterization of the involvement of CBR1, **2** could be a useful probe to assess CBR1 activity *in vitro* in both subcellular fractions and in cell-based systems.

DMD # 82487

Introduction

The predominant mineralocorticoid, aldosterone, controls salt and water balance *via* binding to the mineralocorticoid receptor (MR). Aldosterone actions have also been proposed to occur *via* other so-called non-genomic pathways (Funder, 2001; Boldyreff and Wehling, 2003; Vinson and Coghlan, 2010; Dooley et al., 2012). Though the exact mechanism(s) is not currently understood, elevated levels of aldosterone are associated with a number of diseases (*i.e.* chronic kidney disease, hypertension, and obesity) (Hwang et al., 2013). The renin-angiotensin aldosterone system (RAAS) has been the focus of much attention by the pharmaceutical industry and has resulted in multiple drug classes which include direct renin inhibitors, angiotensin converting enzyme inhibitors (ACEis), angiotensin receptor blockers (ARBs), and MR antagonists (MRAs). Direct inhibition of the production of aldosterone offers a novel means of treating the diseases indicated above and may have the additional benefit of decreasing the interaction of aldosterone through both genomic and non-genomic pathways (Cerny, 2013; Hu et al., 2014; Brem and Gong, 2015; Oparil and Schmieder, 2015).

Drug discovery efforts (Cerny et al., 2015; Weldon et al., 2016) identified **1** ((*S*)-6-(5-fluoro-4-(1-hydroxyethyl)pyridin-3-yl)-3,4-dihydro-1,8-naphthyridine-1(*2H*)-carboxamide, Figure 1) as a potent inhibitor of aldosterone synthase (CYP11B2). Additionally, **1** only weakly inhibits the highly similar enzyme, CYP11B1, as well as other steroidogenic and xenobiotic-metabolizing cytochromes P450. While characterizing the ADME properties of **1**, a ketone metabolite (**2**) was identified in incubations with liver microsomes and hepatocytes as well as in recombinantly expressed cytochrome P450 enzymes. Although the abundance of **2** was found to be relatively low in these systems, additional *in vitro* characterization of the metabolism of **2** was undertaken for the following reasons: 1) **2** was shown to have inhibitory properties towards CYP11B2

DMD # 82487

similar to that of **1**, 2) reductive metabolism of **2** may result in generation of either **1** or its enantiomer, **3** (Figure 1), therefore, requiring chiral chromatographic analyses of clinical samples, and 3) reversible metabolism of **2** may contribute to the low clearance observed for **1**. Based on the results of the studies described herein, **2** was determined to be a selective substrate of human carbonyl reductase 1 (CBR1).

Carbonyl reduction has emerged as an important non-P450 pathway which contributes to the metabolism of both endogenous substrates and xenobiotics (Malatkova and Wsol, 2014; Cerny, 2016). These reactions can be catalyzed by the aldo-keto reductase (AKR) and carbonyl reductase family of enzymes and often substrate overlap between these families of enzymes is observed. NAD(P)(H)-dependent enzymes of both the aldo-keto reductase (AKR) and Short-chain dehydrogenase/reductase (SDR) families of enzymes have been shown to carry out these reactions. Carbonyl reductases (CBRs, EC. 1.1.1.184) represent a subfamily of SDR enzymes that includes three isoforms in humans, CBR1, CBR3, and CBR4. While CBR1 and CBR3 are both cytosolic enzymes, CBR4 is found in the mitochondria. CBR3 and CBR4 have been shown to have low carbonyl reducing activity or narrow substrate specificity. In contrast, CBR1 has been shown to be the most important enzyme of carbonyl reducing enzymes as it is involved in the metabolism of multiple clinically important drugs, including doxorubicin, daunorubicin, nabumetone, loxoprofen, haloperidol, pentoxifylline, and bupropion (Rosemond and Walsh, 2004). Despite the recognition that this pathway is important to metabolism of carbonyl containing compounds, there is still a paucity of data in the literature and further research is needed. Identification of **2** as a selective substrate for CBR1 may serve as a useful probe for further study of this enzyme and its involvement in the metabolism of drugs and endogenous substances.

DMD # 82487

Materials and Methods

Reagents β -Nicotinamide adenine dinucleotide phosphate reduced (NADPH), β -nicotinamide adenine dinucleotide, reduced disodium salt hydrate (NADH), dimethylsulfoxide (DMSO), acetonitrile (MeCN), phenobarbital, zopolrestat, phenolphthalein, flufenamic acid, chenodeoxycholic acid, medroxyprogesterone 17-acetate, dexamethasone, indomethacin, menadione, quercetin ethacrynic acid, dicumarol, 4-methyl pyrazole, disulfiram were purchased from MilliporeSigma (St. Louis, MO). Compounds **1-5** were from the Boehringer Ingelheim compound collection and were prepared by published methods (Balestra et al., 2014). Pooled liver microsomes from mixed gender human (HLM), pooled cynomolgus male monkey (MkLM), pooled male beagle dog (DLM), and pooled male Wistar Han rat (RLM) were purchased from Corning (Tewksbury, MA). Pooled mixed gender human, cynomolgus male monkey, male beagle dog, and male Wistar Han rat liver, kidney, and lung cytosolic fractions were purchased from Corning (Tewksbury, MA). Pooled human, male cynomolgus monkey, male beagle dog, and male Wistar Han rat suspension hepatocytes were obtained from Bioreclamation IVT (Baltimore, MD). Recombinant human carbonyl reductase 1 (CBR1), carbonyl reductase 3 (CBR3), and carbonyl reductase 4 (CBR4) were purchased from Abcam (Cambridge, MA).

Metabolite identification studies in liver microsomes Compound **1** (10 μ M) was incubated with human, monkey, dog, and rat liver microsomes (LM) at a 1 mg/mL final protein concentration in 0.1 M phosphate buffer (pH 7.4) for 2 h at 37 °C in a total volume of 1 mL using either NADPH or NADH (1 mM) as cofactor. Additional metabolite identification studies were carried out on **2** (10 μ M) in both HLM and human liver cytosol (HLCyt) as described above for **1**. Incubations were halted by addition of cold MeCN (1 mL) followed by thorough vortexing and removal of precipitate protein by centrifugation (10 min at 3000xg). Supernatants

DMD # 82487

were removed and concentrated to dryness under a stream of nitrogen. The resulting material was then reconstituted in starting mobile phase and analyzed by LC/MS/MS as described below.

Metabolite identification studies using hepatocytes Compounds **1** (10 μM) was incubated with hepatocytes (final concentration 2 million cells/mL) in Williams E media for 4 h at 37 °C in a total volume of 0.5 mL. Incubations were halted by addition of cold MeCN (1 mL) followed by thorough vortexing and removal of precipitate protein by centrifugation (10 min at 3000xg). Supernatants were removed and concentrated to dryness under a stream of nitrogen. The resulting material was then reconstituted in starting mobile phase and analyzed by LC/MS/MS as described below.

Reaction phenotyping studies Individual recombinant cytochrome P450 isoforms (rCYPs, 50 pmol/mL final concentration) were incubated with **1** (1 μM) in 0.1 M phosphate buffer (pH 7.4) containing magnesium chloride (3 mM final concentration) at 37 °C. Incubation were started by addition of NADPH (1 mM final concentration) bringing the total volume to 0.4 mL. Aliquots (50 μL) were removed at 0, 5, 10, 20, and 30 min and added to cold MeCN (150 μL) containing internal standard. Quenched samples were submitted to thorough vortexing and removal of precipitate protein by centrifugation (10 min at 3000xg). Supernatants were removed and concentrated to dryness under a stream of nitrogen. The resulting material was then reconstituted in starting mobile phase and analyzed by LC/MS/MS as described below.

Kinetics assessment of ketone reduction Formation of **1** from **2** was assessed in triplicate incubations in 0.1 M potassium phosphate buffer (pH 7.4) containing varying concentrations of **2** (12 concentrations between 0 – 100 for LCyt and HLM or 0 – 500 μM for CBR1, CBR3, and CBR4), cytosolic or microsomal fractions (1 mg/mL final protein concentration) from human or other pre-clinical species or recombinant CBR1, CBR3, or CBR4 (0.01 mg/mL final protein

DMD # 82487

concentration), and NADPH (1 mM final concentration) at a final volume of 0.12 mL. For specified experiments NADPH was replaced with NADH (1 mM final concentration). For all experiments, incubations were preincubated for 5 min and started by addition of cofactor. After 5 min, the incubations were quenched by addition of MeCN (0.12 mL) containing internal standard (IS). Precipitated proteins were removed by centrifugation (5 min at 3000xg). Samples were analyzed by LC/MS/MS as indicated below.

Substrate depletion in cytosolic fractions across species Parent disappearance experiments were conducted in triplicate (human) or quadruplicate (monkey, dog, or rat) essentially as described above. For these experiments a single 1 μ M concentration of **2** was used as substrate and incubations were terminated as above at 0, 5, 15, 30, and 60 min. Precipitated proteins were removed by centrifugation (10 min at 3000xg). Samples were analyzed by LC/MS/MS as indicated below.

Inhibition of the reduction of 2 to 1 in human liver cytosol The effect of reductase inhibitors was assessed by incubation of **2** (15 μ M) with HLCyt (1 mg/mL), 0.1 M potassium phosphate buffer (pH 7.4), and NADPH in the presence of 10 or 100 μ M of the following inhibitors: phenobarbital, zopolrestat, phenolphthalein, flufenamic acid, chenodeoxycholic acid, medroxyprogesterone 17-acetate, dexamethasone, indomethacin, menadione, quercetin, ethacrynic acid, dicumarol, 4-methyl pyrazole, and disulfiram. Incubations were started by addition of NADPH and warmed at 37 °C for 5 min. Incubations were quenched by addition of MeCN containing internal standard. Samples were analyzed by LC/MS/MS as indicated below.

LC/MS/MS Analyses

Metabolite identification Samples (20 μ L) were injected on a Supelco Discovery C18 5 μ 2.1 x 150 mm column maintained at room temperature using a Thermo Accela High Speed LC system.

DMD # 82487

A solvent system consisting of water with 0.1% formic acid (mobile phase A) and acetonitrile with 0.1% formic acid (mobile phase B) was used at a flow rate of 0.4 mL/min was used with the following gradient: 0 – 5 min 15% B, 5 – 10 min 15 – 52.5% B, 15 – 16 min 52.5 – 85% B maintain 85% B for 2 min, 18 – 19 min 15% B then equilibrated for 3 min. The column eluent was analyzed by MS on a Thermo LTQ OrbiTrap XL Mass Spectrometer run in positive mode using FTMS and data-dependent FT MS/MS scans (CID and HCD) to elucidate metabolite structures. An in-line Accela photodiode array detector (Thermo Scientific) obtained simultaneous UV absorption spectra. The resulting data were analyzed using Xcalibur 3.0 and Thermo Metworks 1.3 software.

Analysis of kinetics study samples Samples (5 μ L) were injected on a Phenomenex Kinetex C18 1.7 μ m, 2.1 x 50 mm column maintained at 40 °C using a Waters Acquity I-Class UPLC System. A solvent system consisting of water with 0.1% formic acid (mobile phase A) and acetonitrile with 0.1% formic acid (mobile phase B) was used at a flow rate of 0.5 mL/min was used with the following gradient: 0 – 0.50 min 10% B, 0.50 – 1.50 min 10 – 90% B, 1.50 – 2.00 min maintain at 90% B, 2.00 – 2.01 90– 10% B, 2.01 – 2.50 reequilibrate at 10% B. The column eluent was analyzed by MS on an AB Sciex API 6500 Q-Trap Mass Spectrometer run in positive mode using the following MRM method: for **1** Q1/Q3 317.2 \rightarrow 254, DP 60, CE 25, for **2** Q1/Q3 315.1 \rightarrow 252, DP 60, CE 25. A standard curve was constructed by serial dilution in control tissue sample ranging from 10 – 0.001 μ M. The resulting MS data were analyzed using Analyst 1.4.2 software.

Chiral chromatography of 1 and 3 Samples (5 μ L) were injected on a Chiral-AGP 2.0x100 mm column maintained at room temperature using a Waters Acquity I-Class UPLC System. A solvent system consisting of water (mobile phase A) and acetonitrile (mobile phase B) was used

DMD # 82487

at a flow rate of 0.25 mL/min was used with an isocratic flow of 95% A and 5% B. The column eluent was analyzed by MS on an AB Sciex API 6500 Q-Trap Mass Spectrometer run in positive mode using the following MRM method: for both **1** and **3** Q1/Q3 317.2 → 254, DP 60, CE 25.

The resulting MS data were analyzed using Analyst 1.4.2 software.

Calculations

Kinetics assessment of ketone reduction: The rate of formation of **1** from **2** was plotted against the nominal incubation concentrations of **2** and fit to the Michaelis-Menten equation using GraphPad Prism 7.02 to determine the kinetics parameters, K_m and V_{max} . Given the low lipophilicity of **2**, (LogP = 1.7) non-specific binding to microsomes is expected to be low. In vitro intrinsic clearance (Cl_{int}) was calculated from these parameters using Equation 1.

Equation 1
$$Cl_{int} = \frac{V_{max}}{K_m}$$

Substrate depletion in cytosolic fractions across species: The natural log of percent substrate remaining was plotted versus time in order to determine the rate of depletion (k_{deg}). From these data Cl_{int} was calculated as described in Equation 2 below.

Equation 2
$$Cl_{int} = k_{deg} \times \frac{mL \text{ incubation}}{1 \text{ mg cytosolic protein}}$$

Results

Metabolite Identification

Metabolism studies on **1** were carried out across species in a number of *in vitro* systems including LM, hepatocytes, and rCYPs. In incubations of LM with **1** performed in the absence of NADPH neither consumption of **1**, nor formation of metabolites was observed. Generally, greater consumption of **1** was observed in LM than in hepatocytes across species (Supplemental Table S1 and Table S2). However, in both human LM and hepatocytes, low turnover (<5 %

DMD # 82487

consumed in 60 min, Supplemental Figure S1) was observed for **1**. Greater consumption of **1** and formation of metabolites was observed in monkey, dog, and rat LM and hepatocytes than in human. In samples from these incubations **1** was shown to elute at 10.8 min with prominent fragmentation occurring through the urea moiety (Figure 2) yielding fragments of m/z 300 and 274.

As shown in Figure 3, three monooxygenated metabolites (m/z 333) of **1** were observed. As the prominent fragmentation for these metabolites occurs via the urea moiety, similarly to what was described above for **1**, little structural information as to position of metabolism was ascertained from MS² data. The identity of one of these three metabolites ($t_R = 9.2$ min) was determined to be the pyridine *N*-oxide (**4**) based on a synthetic standard. The site of metabolism for a second m/z 333 metabolite (m332_2, $t_R = 9.8$ min) was identified as on the methylene adjacent to the urea nitrogen. This was established using a deuterated analog of **1** (**5**) where metabolism of **5** resulted in loss of one of the two deuterium atoms (m/z 334) and could result in formation of the ring-intact hydroxyl species and/or the ring-opened aldehyde metabolite. The structure of the third m/z 333 (m332_3, $t_R = 10.5$ min) metabolite was not determined. Subsequent reduction and oxidation of the aldehyde form of m332_2 gave rise to both the m/z 335 (m334, $t_R = 8.0$ min) and m/z 349 (m348, $t_R = 8.5$ min) metabolites, respectively, which are only observed in hepatocytes. The structure of both of these metabolites was confirmed with synthetic standards.

Another minor metabolite with m/z 315 ($t_R = 12.9$ min, -2H) was identified in a number of matrices. The structure of this metabolite was confirmed with a synthetic standard of **2** which matched the chromatographic retention and mass spectrometric fragmentation pattern of the m/z 315 metabolite (data not shown). Follow-up studies determined **2** to be a potent and

DMD # 82487

selective inhibitor of CYP11B2 (CYP11B2 IC₅₀ = 9.7 nM, CYP11B1 IC₅₀ = 6200 nM) using cynomolgus monkey adrenal homogenate assays (Cerny et al., 2015).

Metabolites observed in monkey, dog, and rat LM and hepatocytes corresponded to the metabolites observed in human matrices. No human unique metabolites were observed, and no additional metabolites were detected in pre-clinical species LM and hepatocytes. Metabolism of **1** in rCYPs resulted in formation of only oxidative metabolites (**4**, m332_2, m332_3, and **2**) with CYP2C8, CYP2C9, CYP2C19, CYP2D6, CYP3A4, and CYP3A5 contributing to the metabolism of **1** (Supplemental Table S3).

Additional metabolite identification studies were carried out on **2** in both HLM and HLCytLCyt. In these studies, **2** was also found to be relatively stable in HLM and HLCyt incubations supplemented with NADH (<10% consumed in 60 min). The major metabolite observed in these studies was reduction of **2** to a metabolite consistent with the enantiomers, **1** or **3**, in terms of mass, retention time, and fragmentation pattern and represents 2.2 and 5.1% of the total UV peak area, respectively (Supplemental Table S4). When **2** was incubated with HLM and NADPH, formation of a metabolite consistent with **1** or **3** was also the major biotransformation, represented ~45% of the UV peak area. A minor monohydroxylated metabolite of **2** with *m/z* 331 (0.6% of UV peak area) was also observed under these conditions as well as three other minor metabolites which were only detectable by MS. Incubation of **2** with HLCyt and NADPH resulted in significant formation of a metabolite consistent with **1** or **3** which represented almost 99% of the total UV peak area.

Determination of Stereoselectivity of the Reduction of 2

DMD # 82487

As reduction of **2** may result in formation of either **1** and/or **3**, chiral chromatography was developed to determine the stereoselectivity of this reduction. Chromatographic resolution of **1** from **3** was achieved as shown in Figure 4A and Figure 4B, respectively. Subsequently, analysis of a sample of the HLCyt incubation of **2** supplemented with NADPH resulted in a single peak with a retention time that matched **1** (Figure 4C). Spiking of this sample with **3**, followed by chromatographic analysis resulted in two peaks, an earlier eluting peak corresponding to **3** which was not present in the incubation sample and the previously observed peak which corresponds to **1** (Figure 4D). This analysis indicated that reductive metabolism of **2** occurs stereoselectively resulting in conversion of **2** back to **1** with no or minimal formation of **3**.

Kinetics Studies

To further characterize the reduction of **2** to **1**, kinetic studies were carried out in human cytosolic fractions from multiple tissues as well as HLM and recombinant CBR1, CBR3 and CBR4. Initial incubations were run with both NADH and NADPH to determine the optimal cofactor for supporting this reductive transformation. As the determined solubility of **2** at physiological pH was ~100 μ M, data generated at concentrations exceeding this limit were excluded from kinetics assessments. Kinetics of reductive metabolism of **1** followed Michaelis-Menten kinetics and generally similar K_m values were observed across all matrices (Table 1). In both HLCyt and HLM, NADPH fortified incubations displayed higher Cl_{int} for the reductive metabolism of **2** (Table 1, Figure 5). Formation of **1** from **2** was observed in NADPH-fortified incubations of either CBR3 or CBR4 only at high concentrations (Supplemental Figure 2). A comparison of the NADPH-supported reduction of **2** in cytosolic fractions across human tissues in terms of Cl_{int} resulted in a rank order of activity as follows: intestine > liver > lung \approx kidney

DMD # 82487

(Table 1). Figure 6 shows Cl_{int} data determined by disappearance of **2** (1 μ M) in NADPH-fortified cytosolic fractions from liver, intestine, kidney, and lung from human, cynomolgus monkey, dog, and rat. In general, cynomolgus monkey and dog exhibited similar activity to that of human across tissues. However, rat displayed significantly less activity across all matrices.

Enzyme Identification Studies

Currently highly selective inhibitors for most carbonyl reducing enzymes are not available. Therefore, identifying the enzyme(s) responsible for the conversion of **2** to **1** was undertaken using a set of inhibitors which are known to inhibit one or more carbonyl reducing enzymes. Inhibition of the conversion of **2** to **1** was determined using HLCyt supplemented with NADPH. Inhibition as a percent of control was determined at 10 and 100 μ M inhibitor concentrations for the inhibitors listed in Table 3. At the 10 μ M inhibitor concentration, <20% inhibition was observed for all inhibitors except for menadione and quercetin which inhibited 32.6 and 56.4%, respectively. At the 100 μ M inhibitor concentration, menadione, quercetin, ethacrynic acid, and disulfiram showed 95.7, 81.6, 34.4, and 43.5 % inhibition, respectively. Based on the reported inhibition of carbonyl reducing enzymes, these results indicate the involvement of a carbonyl reductase (CBR) or a member of the short-chain dehydrogenase/reductase (SDR).

Discussion

The identification of **1** as a potent and selective inhibitor of aldosterone synthase (CYP11B2) lead to characterization of its ADME in both *in vitro* systems and *in vivo* in pre-clinical species. In these systems, **1** was characterized as a low clearance compound (< 2.5 mL/min/kg, data not included). Though **1** was found to be metabolically stable, sufficient turnover of **1** was observed

DMD # 82487

to allow for the identification of metabolites, as shown in Figure 2. In rCYPs, human LM, and human hepatocytes three monooxidation metabolites were observed with m/z 333. One of these metabolites was confirmed to be the pyridine *N*-oxide metabolite (**4**). Another of these metabolites was determined to be hydroxylated on the methylene adjacent to the urea using the deuterated analog **5**, resulting in the ring-intact hydroxyl species and/or the ring-opened aldehyde metabolite. Subsequent reduction and oxidation of the aldehyde form of this metabolite likely gives rise to both the m/z 334 and m/z 348 metabolites, respectively. As formation of these metabolites likely requires cytosolic alcohol and aldehyde dehydrogenases, respectively, these metabolites are only observed in incubations of **1** with hepatocytes. The specific position of the third monooxidation metabolite was not determined. A minor ketone metabolite, **2** (<1% of parent based on UV in HLM and hepatocytes), was confirmed by synthesis of an authentic standard. Subsequently, **2** was shown to possess inhibitory activity against CYP11B2 and a high degree of selectivity relative to CYP11B1. Due to its activity against the pharmacological target as well as potential for reversible metabolism contributing to the low clearance of **1**, studies to determine enzymes responsible for the formation and subsequent metabolism of this ketone metabolite were undertaken.

As both NADH and NADPH are capable of supporting reductive metabolism depending on the enzyme(s) involved (Rosemond and Walsh, 2004), we initially sought to determine the optimal cofactor and matrix for reduction of **2** to **1** in HLM and HLCyt. In HLMs both oxidative metabolism and reduction of **2** to **1** were shown to be minor. However, **2** was found to be metabolized rapidly *via* reduction in HLCyt supplemented with NADPH. Analysis of samples of the cytosolic incubation indicated that the reduction of **2** occurred stereoselectively back to **1** and not to its enantiomer, **3** (Figure 4). Such stereoselectivity for carbonyl reduction is not without

DMD # 82487

precedent and has been reported for ketotifen (Breyer-Pfaff and Nill, 2000), nortriptyline (Breyer-Pfaff and Nill, 2000), and dolasetron (Breyer-Pfaff and Nill, 2004). Furthermore, the reduction of **2** to **1** in human cytosol fractions across a number of tissues (Supplemental Table S4, Figure 5) was supported predominantly by NADPH with considerably less reductase activity observed in the presence of NADH.

The NADPH-catalyzed reduction of **2** to **1** exhibited comparable K_m values across tissues and in recombinant CBR1 (Table 1) though V_{max} values varied considerably across tissues. In terms of CL_{int} , the cytosolic reduction activity was found to increase in rate across human tissues (Table 1) in the following order: intestine > liver > kidney \approx lung. However, some caution must be taken in the determined kinetic parameters (i.e. K_m , V_{max} , and CL_{int}), as the reported K_m values in most matrices are approaching the solubility limit of **1**.

Akin to human, reduction of **2** was also observed in cytosolic fractions from other pre-clinical species. Similar reductive activities were observed across tissues in human, monkey, and dog. However, reductive metabolism across tissues from rat was considerably slower than in human tissues. These observations are consistent with known differences in the function and expression of CBR1 across pre-clinical species and human. These differences have been described in a recent publication which evaluated the tissue distribution of CBR1 across pre-clinical species and reported that 1) *cbr1* is not expressed in rat liver, 2) *cbr1* demonstrates greater specificity in steroid reduction, and 3) *cbr1* is highly expressed in reproductive tissues (Shi and Di, 2017).

To provide insights into the enzyme(s) responsible for the reduction of **2**, a set of inhibition studies was undertaken. As selective inhibitors for many of the carbonyl reductase enzymes have not been identified, a set of inhibitors targeting one or more reductase enzymes was

DMD # 82487

employed at 10 and 100 μM concentrations. The set of inhibitors is presented in Table 2 and included: phenobarbital (AKR1A1, AKR1B1), zopolrestat (AKR1B1), phenolphthalein (AKR1C1, AKR1C2, AKR1C3, AKR1C4), flufenamic acid (AKR1C1, AKR1C2, AKR1C3, AKR1C4), chenodeoxycholic acid (AKR1C2), medroxyprogesterone 17-acetate (AKR1C1, AKR1C2, AKR1C4), dexamethasone (AKR1C4), indomethacin (AKR1C1, AKR1C2, AKR1C3, AKR1C4, CR), menadione (CR/SDR), quercetin (CR/SDR), ethacrynic acid (CR/SDR), dicumarol (quinone oxidoreductase), 4-methyl pyrazole (alcohol dehydrogenase), and disulfiram (aldehyde dehydrogenase). As shown in Table 2, significant inhibition was observed for menadione (96% inhibition), quercetin (82% inhibition), disulfiram (44% inhibition), and ethacrynic acid (34% inhibition) at a 100 μM inhibitor concentration. Likewise, both quercetin and menadione also showed significant inhibition at a 10 μM inhibitor concentration. Inhibition by menadione, quercetin, and ethacrynic acid indicate that a CR/SDR enzyme such as CBR1 is responsible for the reduction of **2**. This is further supported by the location of the reductase in the cytosolic fraction and the greater rate of metabolism with incubations supplemented with NADPH rather than NADH. Inhibition of reduction of **2** by the aldehyde dehydrogenase inhibitor, disulfiram, can be explained by a lack of selectivity for this inhibitor at higher concentrations. Additionally, disulfiram has been previously shown to inhibit two carbonyl reductases isolated from rat ovaries (Iwata et al., 1992).

Data obtained from inhibition studies, the greater activity observed in the presence of NADPH versus NADH, studies with recombinant CBR1, as well the majority of reductase activity being observed in the cytosolic fraction together indicate that CBR1 is the enzyme responsible for this transformation in humans and that the reduction reaction is selective for CBR1. The reductive

DMD # 82487

activity towards **2** observed across human tissues also appears to be in agreement to the protein expression profile of CBR1 reported by Hua *et al.* (Hua et al., 2017).

Though many compounds have been identified as substrates for CBR1, the selectivity of most towards other carbonyl reducing enzymes and cytochromes P450 are generally poor.

Additionally, many of the probe substrates are small, low molecular weight compounds with limited utility for MS detection. The selective reduction **2** by CBR1, the relatively slow oxidation of **1** to **2** by CYP enzymes, the lack of inhibitory potency of **2** against CYP enzymes (other than CYP11B2), and the favorable MS characteristics for this compound make **2** a useful probe substrate to assess CBR1 activity *in vitro* in both subcellular fractions and in cell-based systems.

In addition to the identification of a potentially useful probe of CBR1, the *in vitro* characterization of the metabolic interconversion of **1** and **2** alleviated concerns regarding inhibitory potency of **2** towards CYP11B2, the stereoselectivity of the reductive metabolism of **2**, and the contribution of reversible metabolism of **2** contributing to the low clearance of **1**. *In vitro* studies indicated that serendipitously conversion of **2** occurred back to **1**. The rate of back reduction of **2** to **1** is anticipated to result in insignificant circulating levels of **2** contributing to the pharmacology. Additionally, the minimal formation of **2** in systems lacking CBR1 suggests that oxidative metabolism of **1** is slow and indicates that reversible metabolism involving **2** is likely minimal.

Acknowledgements

We thank Xin Guo, Kenneth Meyers, Bryan McKibben, and John Lord for their synthesis of compounds **1** – **5**.

DMD # 82487

Authorship Contributions

Participated in research design: Arenas, Frederick and Cerny

Conducted Experiments: Arenas and Frederick

Performed data analysis: Arenas, Frederick, and Cerny

Wrote or contributed to the writing of the manuscript: Smith, Ramsden, Frederick, and Cerny

DMD # 82487

DMD # 82487

References

- Atalla A, Breyer-Pfaff U, and Maser E (2000) Purification and characterization of oxidoreductases-catalyzing carbonyl reduction of the tobacco-specific nitrosamine 4-methylnitrosamino-1-(3-pyridyl)-1-butanone (NNK) in human liver cytosol. *Xenobiotica* **30**:755-769.
- Atalla A and Maser E (2001) Characterization of enzymes participating in carbonyl reduction of 4-methylnitrosamino-1-(3-pyridyl)-1-butanone (NNK) in human placenta. *Chem Biol Interact* **130-132**:737-748.
- Balestra M, Burke J, Chen Z, Cogan D, Fader L, Guo X, McKibben B, Marshall DR, Nemoto PA, and Yu H (2014) Patent Number US20140323468A1 Naphthyridines, azaindoles and related compounds as aldosterone synthase inhibitors and their preparation, pp 185, Boehringer Ingelheim International GmbH, Germany.
- Bauman DR, Rudnick SI, Szewczuk LM, Jin Y, Gopishetty S, and Penning TM (2005) Development of nonsteroidal anti-inflammatory drug analogs and steroid carboxylates selective for human aldo-keto reductase isoforms: potential antineoplastic agents that work independently of cyclooxygenase isozymes. *Mol Pharmacol* **67**:60-68.
- Boldyreff B and Wehling M (2003) Non-genomic actions of aldosterone: mechanisms and consequences in kidney cells. *Nephrol Dial Transplant* **18**:1693-1695.
- Brem AS and Gong R (2015) Therapeutic targeting of aldosterone: a novel approach to the treatment of glomerular disease. *Clin Sci (Lond)* **128**:527-535.
- Breyer-Pfaff U and Nill K (2000) High-affinity stereoselective reduction of the enantiomers of ketotifen and of ketonic nortriptyline metabolites by aldo-keto reductases from human liver. *Biochem Pharmacol* **59**:249-260.

DMD # 82487

- Breyer-Pfaff U and Nill K (2004) Carbonyl reduction of naltrexone and dolasetron by oxidoreductases isolated from human liver cytosol. *J Pharm Pharmacol* **56**:1601-1606.
- Cerny MA (2013) Progress towards clinically useful aldosterone synthase inhibitors. *Curr Top Med Chem* **13**:1385-1401.
- Cerny MA (2016) Prevalence of Non-Cytochrome P450-Mediated Metabolism in Food and Drug Administration-Approved Oral and Intravenous Drugs: 2006-2015. *Drug Metab Dispos* **44**:1246-1252.
- Cerny MA, Csengery A, Schmenk J, and Frederick K (2015) Development of CYP11B1 and CYP11B2 assays utilizing homogenates of adrenal glands: Utility of monkey as a surrogate for human. *J Steroid Biochem Mol Biol* **154**:197-205.
- Deyashiki Y, Taniguchi H, Amano T, Nakayama T, Hara A, and Sawada H (1992) Structural and functional comparison of two human liver dihydrodiol dehydrogenases associated with 3 alpha-hydroxysteroid dehydrogenase activity. *Biochem J* **282 (Pt 3)**:741-746.
- Dooley R, Harvey BJ, and Thomas W (2012) Non-genomic actions of aldosterone: from receptors and signals to membrane targets. *Mol Cell Endocrinol* **350**:223-234.
- Edwards YH, Potter J, and Hopkinson DA (1980) Human FAD-dependent NAD(P)H diaphorase. *Biochem J* **187**:429-436.
- Funder JW (2001) Non-genomic actions of aldosterone: role in hypertension. *Curr Opin Nephrol Hypertens* **10**:227-230.
- Gebel T and Maser E (1992) Characterization of carbonyl reducing activity in continuous cell lines of human and rodent origin. *Biochem Pharmacol* **44**:2005-2012.
- Hara A, Taniguchi H, Nakayama T, and Sawada H (1990) Purification and properties of multiple forms of dihydrodiol dehydrogenase from human liver. *J Biochem* **108**:250-254.

DMD # 82487

Hu Q, Yin L, and Hartmann RW (2014) Aldosterone synthase inhibitors as promising treatments for mineralocorticoid dependent cardiovascular and renal diseases. *J Med Chem* **57**:5011-5022.

Hua W, Zhang H, Ryu S, Yang X, and Di L (2017) Human Tissue Distribution of Carbonyl Reductase 1 Using Proteomic Approach With Liquid Chromatography-Tandem Mass Spectrometry. *J Pharm Sci* **106**:1405-1411.

Hwang MH, Yoo JK, Luttrell M, Kim HK, Meade TH, English M, Segal MS, and Christou DD (2013) Mineralocorticoid receptors modulate vascular endothelial function in human obesity. *Clin Sci (Lond)* **125**:513-520.

Iwata N, Inazu N, and Satoh T (1992) Consecutive treatment of disulfiram inhibits ovarian carbonyl reductase activity in rats. *Jpn J Pharmacol* **58**:167-173.

Kraemer RJ and Deitrich RA (1968) Isolation and characterization of human liver aldehyde dehydrogenase. *J Biol Chem* **243**:6402-6408.

Malatkova P, Maser E, and Wsol V (2010) Human carbonyl reductases. *Curr Drug Metab* **11**:639-658.

Malatkova P and Wsol V (2014) Carbonyl reduction pathways in drug metabolism. *Drug Metab Rev* **46**:96-123.

Matsuura K, Deyashiki Y, Sato K, Ishida N, Miwa G, and Hara A (1997) Identification of amino acid residues responsible for differences in substrate specificity and inhibitor sensitivity between two human liver dihydrodiol dehydrogenase isoenzymes by site-directed mutagenesis. *Biochem J* **323 (Pt 1)**:61-64.

Mylari BL, Larson ER, Beyer TA, Zembrowski WJ, Aldinger CE, Dee MF, Siegel TW, and Singleton DH (1991) Novel, potent aldose reductase inhibitors: 3,4-dihydro-4-oxo-3-[[5-

DMD # 82487

- (trifluoromethyl)-2-benzothiazolyl] methyl]-1-phthalazineacetic acid (zopolrestat) and congeners. *J Med Chem* **34**:108-122.
- Oparil S and Schmieder RE (2015) New approaches in the treatment of hypertension. *Circ Res* **116**:1074-1095.
- Porter SJ, Somogyi AA, and White JM (2000) Kinetics and inhibition of the formation of 6beta-naltrexol from naltrexone in human liver cytosol. *Br J Clin Pharmacol* **50**:465-471.
- Rosemond MJ and Walsh JS (2004) Human carbonyl reduction pathways and a strategy for their study in vitro. *Drug Metab Rev* **36**:335-361.
- Shi SM and Di L (2017) The role of carbonyl reductase 1 in drug discovery and development. *Expert Opin Drug Metab Toxicol* **13**:859-870.
- Steckelbroeck S, Oyesanmi B, Jin Y, Lee SH, Kloosterboer HJ, and Penning TM (2006) Tibolone metabolism in human liver is catalyzed by 3alpha/3beta-hydroxysteroid dehydrogenase activities of the four isoforms of the aldo-keto reductase (AKR)1C subfamily. *J Pharmacol Exp Ther* **316**:1300-1309.
- Vinson GP and Coghlan JP (2010) Expanding view of aldosterone action, with an emphasis on rapid action. *Clin Exp Pharmacol Physiol* **37**:410-416.
- Weldon SM, Cerny MA, Gueneva-Boucheva K, Cogan D, Guo X, Moss N, Parmentier JH, Richman JR, Reinhart GA, and Brown NF (2016) Selectivity of BI 689648, a Novel, Highly Selective Aldosterone Synthase Inhibitor: Comparison with FAD286 and LCI699 in Nonhuman Primates. *J Pharmacol Exp Ther* **359**:142-150.
- Wermuth B (1981) Purification and properties of an NADPH-dependent carbonyl reductase from human brain. Relationship to prostaglandin 9-ketoreductase and xenobiotic ketone reductase. *J Biol Chem* **256**:1206-1213.

DMD # 82487

DMD # 82487

Figures

Figure 1 Structures of compounds **1-5**

Figure 2 Major MS fragments for compound **1** and metabolites.

Figure 3 Metabolic scheme for compound **1**.

Figure 4 Chiral chromatography of **3** (A), **1** (B), incubation of **2** with HLCyt + NADPH, and incubation of **2** with HLCyt spiked with **3**.

Figure 5 Comparison of the reductive metabolism of **2** to **1** in human tissues cytosol and microsomes supplemented with NADPH or NADH.

Figure 6 Comparison of the reductive metabolism of **2** in cytosols across tissues from human, monkey, dog, and rat supplemented with NADPH.

DMD # 82487

Tables

Table 1. Enzyme kinetic parameters for conversion of **2** to **1** in various matrices supplemented with either NADPH or NADH.

Source	Tissue	Fraction	Cofactor	K_m <i>μM</i>	V_{max} <i>pmol/min/mg</i>	Cl_{int} <i>μL/min/mg protein</i>
hCBR1			NADPH	107.6	1180	10.97
Human	Liver	Cytosol	NADPH	91.2	15.8	0.17
		Cytosol	NADH	63.6	0.49	0.0078
		Microsomes	NADPH	52.3	1.68	0.032
		Microsomes	NADH	56.4	0.15	0.0027
	Intestine	Cytosol	NADPH	39.8	7.38	0.19
	Lung	Cytosol	NADPH	209	21.4	0.10
	Kidney	Cytosol	NADPH	94.2	9.01	0.10

DMD # 82487

Table 2. The effect of reductase inhibitors on the conversion of **2** to **1** in HLCyt supplemented with NADPH.^a

Inhibitor	Enzyme Targets	% Inhibition		Reference
		10 μ M	100 μ M	
Phenobarbital	AKR1A1 AKR1B1	2.4	-2.7	(Gebel and Maser, 1992)
Zopolrestat	AKR1B1	10.3	15.2	(Mylari et al., 1991)
Phenolphthalein	AKR1C1 AKR1C2 AKR1C3 AKR1C4	6.6	6.0	(Atalla et al., 2000; Steckelbroeck et al., 2006)
Flufenamic acid	AKR1C1 AKR1C2 AKR1C3 AKR1C4	8.0	18.1	(Matsuura et al., 1997; Atalla et al., 2000)
Chenodeoxycholic acid	AKR1C2	-0.9	-2.9	(Bauman et al., 2005)
Medroxyprogesterone 17-acetate	AKR1C1 AKR1C2 AKR1C4	5.0	6.4	(Hara et al., 1990)
Dexamethasone	AKR1C4	0.7	-7.6	(Deyashiki et al., 1992)
Indomethacin	AKR1C1 AKR1C2 AKR1C3 AKR1C4 CBR	-0.2	12.2	(Gebel and Maser, 1992)
Menadione	CBR/SDR	32.6	95.7	(Wermuth, 1981; Porter et al., 2000)
Quercetin	CBR/SDR	56.4	81.6	(Wermuth, 1981)
Ethacrynic acid	CBR/SDR	11.6	34.4	(Wermuth, 1981; Atalla et al., 2000; Atalla and Maser, 2001)
Dicumarol	Quinone oxidoreductase	19.7	11.2	(Edwards et al., 1980)

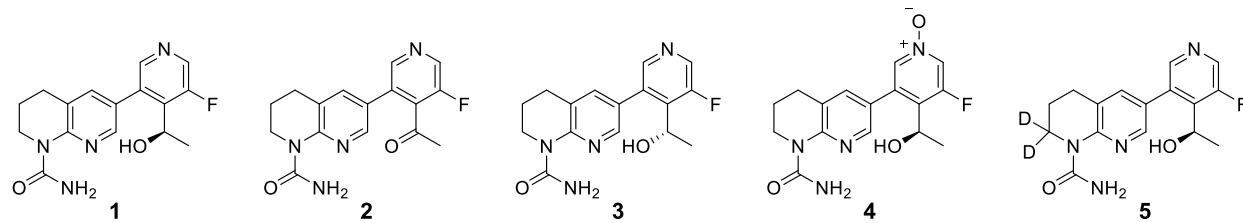
DMD # 82487

4-Methylpyrazole	Alcohol dehydrogenase	1.8	2.2	(Atalla and Maser, 2001)
Disulfiram	Aldehyde dehydrogenase	5.9	43.5	(Kraemer and Deitrich, 1968)

^a – Incubations were performed at a 15 μ M concentration of **2** and a 1 mg/mL protein concentration of HLCyt for 5 min at 37 °C.

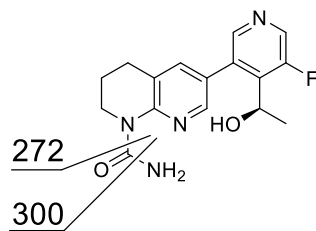
DMD # 82487

Figure 1.



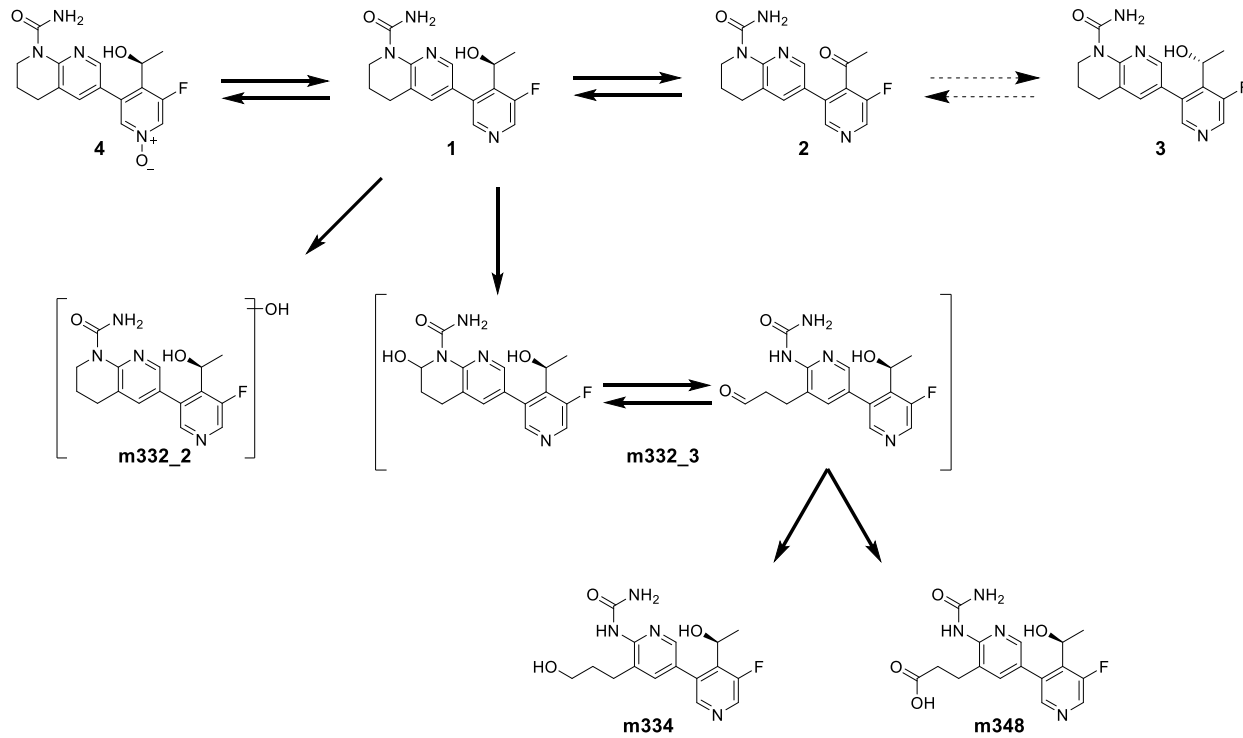
DMD # 82487

Figure 2.



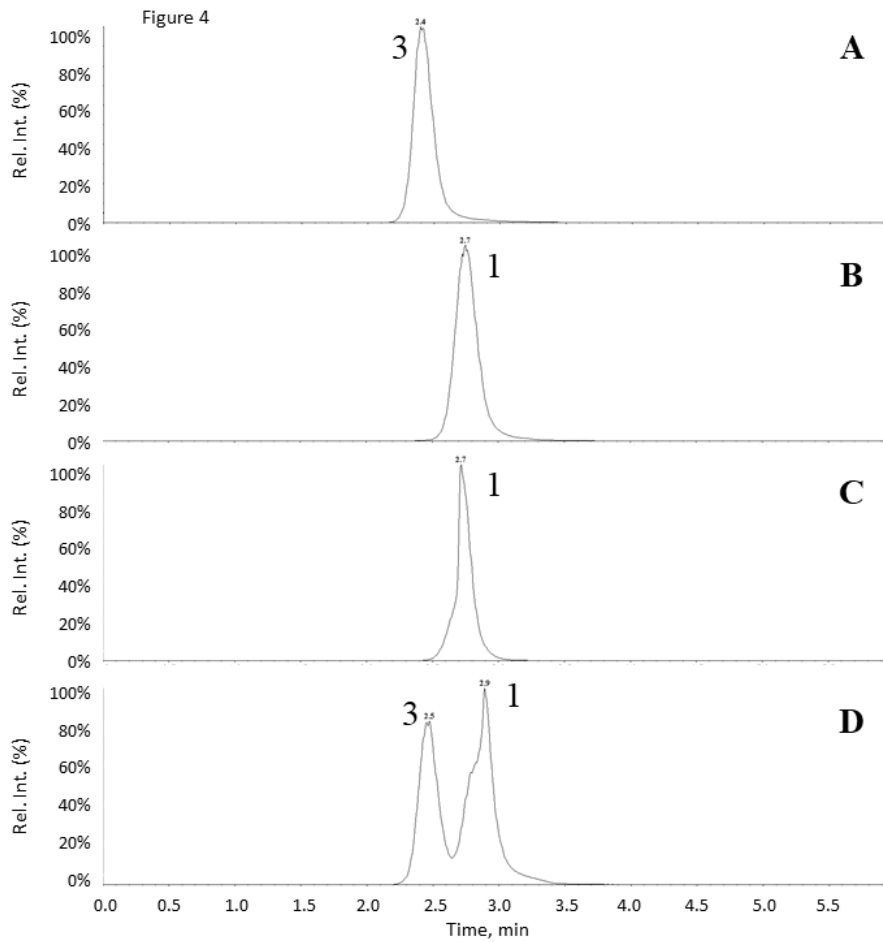
DMD # 82487

Figure 3.



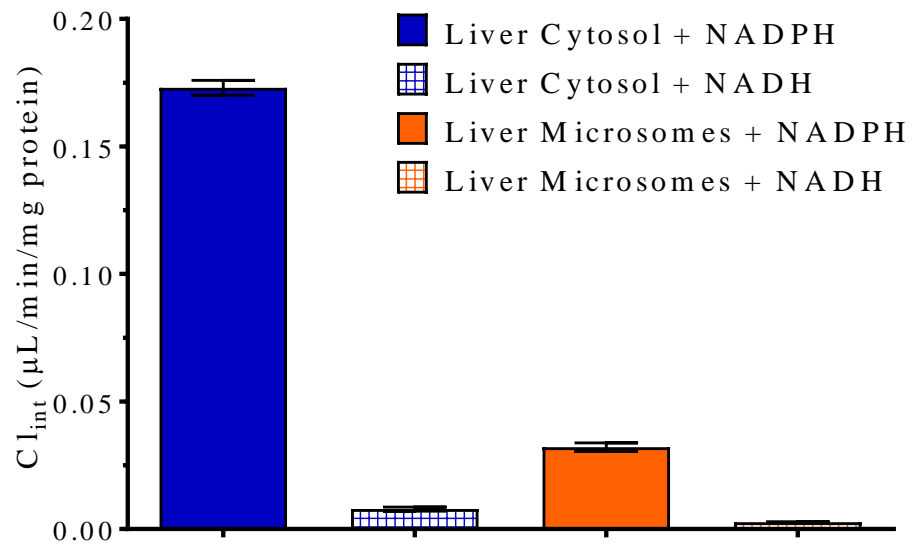
DMD # 82487

Figure 4.



DMD # 82487

Figure 5.



DMD # 82487

Figure 6.

