

Critical Differences Between Enzyme Sources in Sensitivity to Detect Time-Dependent Inactivation of CYP2C8

Helinä Kahma, Anne M. Filppula, Terhi Launiainen, Jenni Viinamäki, Mikko Neuvonen,
Eric A. Evangelista, Rheem A. Totah and Janne T. Backman

Department of Clinical Pharmacology, University of Helsinki and Helsinki University
Hospital, Helsinki, Finland (H.K., A.M.F., T.L., J.V., M.N., J.T.B.); Department of Medicinal
Chemistry, University of Washington, Seattle, United States (E.A.E, R.A.T)

DMD # 85498

Running title: Disparities in CYP2C8 Inactivation Between Enzyme Sources

Corresponding author: Janne T. Backman, Department of Clinical Pharmacology,
University of Helsinki, Biomedicum 2C, Tukholmankatu 8 C, 00290 Helsinki, Finland
Phone: +358 50 428 0997, Fax: +358 9 471 74039, Email: janne.backman@helsinki.fi

Number of text pages: 32

Number of tables: 1

Number of figures: 6

Number of references: 37

Number of words:

Abstract: 250

Introduction: 363

Discussion: 1497

Abbreviations: CYP, cytochrome P450; HLMs, human liver microsomes; K_I , inhibitor concentration that produces half-maximal rate of inactivation; k_{inact} , maximal inactivation rate constant; k_{obs} , initial inactivation rate constant; K_s , dissociation constant; MBI, mechanism-based inhibition; NADPH, nicotinamide adenine dinucleotide phosphate; TDI, time-dependent inactivation

DMD # 85498

Abstract

Clopidogrel acyl- β -D-glucuronide is a mechanism-based inhibitor of cytochrome P450 (CYP) 2C8 in human liver microsomes (HLMs). However, time-dependent inactivation (TDI) of CYP2C8 could not be detected in an earlier study in human recombinant CYP2C8 (Supersomes). Here, we investigate whether different enzyme sources exhibit differences in detection of CYP2C8 TDI under identical experimental conditions. Inactivation of CYP2C8 by amiodarone (100 μ M), clopidogrel acyl- β -D-glucuronide (100 μ M), gemfibrozil 1-O- β -glucuronide (100 μ M) and phenelzine (100 μ M) was investigated in HLMs and three recombinant human CYP2C8 preparations (Supersomes, Bactosomes and EasyCYP Bactosomes) using amodiaquine *N*-deethylation as the marker reaction. Furthermore, the inactivation kinetics of CYP2C8 by clopidogrel glucuronide (5-250 μ M) was determined in Supersomes and Bactosomes. Amiodarone caused weak TDI in all enzyme preparations tested, while the extent of inactivation by clopidogrel glucuronide, gemfibrozil glucuronide and phenelzine varied markedly between preparations, and even different Supersome lots. Both glucuronides caused strong inactivation of CYP2C8 in HLMs, Bactosomes and in one Supersome lot (>50% inhibition), but significant inactivation could not be reliably detected in other Supersome lots or EasyCYP Bactosomes. In Bactosomes, the K_I and k_{inact} of clopidogrel glucuronide (14 μ M and 0.054 min^{-1}) were similar to those determined previously in HLMs. Phenelzine caused strong inactivation of CYP2C8 in one Supersome lot (91% inhibition) but not in HLMs or other recombinant CYP2C8 preparations. In conclusion, different enzyme sources and different lots of the same recombinant enzyme preparation are not equally sensitive to detect inactivation of CYP2C8, suggesting that recombinant CYPs should be avoided when identifying mechanism-based inhibitors.

DMD # 85498

Introduction

Cytochrome P450 (CYP) 2C8 is recognized as an important drug-metabolizing enzyme, and inhibition of CYP2C8 can cause many clinically significant drug-drug interactions (Backman et al., 2016). Mechanism-based inhibition (MBI) of CYP2C8 is of particular importance, since it inactivates the enzyme irreversibly or quasi-irreversibly, thus causing long-lasting loss of catalytic activity. MBI requires a catalytic transformation of the inactivator to a reactive intermediate or metabolite that inactivates the enzyme, and the inactivation process is thus time-dependent (Silverman, 1995). Established examples of clinically significant, strong mechanism-based inhibitors of CYP2C8 are the acyl glucuronide metabolites of the lipid-lowering drug gemfibrozil and the antiplatelet agent clopidogrel. These glucuronides are formed by UGT2B enzymes from their parent compounds and have been shown to cause MBI of CYP2C8 in human liver microsomes (HLMs) (Ogilvie et al., 2006; Mano et al., 2007; Tornio et al., 2014; Kahma et al., 2018). However, in a previous study investigating the interaction between cerivastatin and clopidogrel, time-dependent inactivation (TDI) of CYP2C8 by clopidogrel acyl- β -D-glucuronide was not observed when incubated with human recombinant CYP2C8 expressed in baculovirus infected insect cells (Supersomes) (Floyd et al., 2012). Similarly, in preliminary studies, we were also unable to detect inactivation of CYP2C8 by clopidogrel acyl- β -D-glucuronide in Supersomes.

Recombinantly expressed human CYP enzymes are widely available and commonly used for screening metabolic drug-drug interactions to identify inhibitors of CYP enzymes (Parkinson et al., 2010). Several studies report large differences in kinetic and inhibition parameters between different enzyme sources, but little is known about the effects of different enzyme sources on mechanism-based inhibition (Kumar et al., 2006; Van et al., 2007; Parkinson et al., 2010). Reliable *in vitro* identification of CYP inhibitors is crucial to detect possible clinically significant drug-drug interactions of compounds already in the

DMD # 85498

preclinical phase. This is especially important for mechanism-based inhibitors, since irreversible CYP inactivation caused by mechanism-based inhibition is likely to pose greater safety concerns compared to reversible inhibition. To investigate the sensitivity and reliability of different enzyme sources in mechanism-based inhibition of CYP2C8, we studied the performance of HLMs and three different recombinant human CYP preparations under controlled experimental conditions using clopidogrel acyl- β -D-glucuronide, gemfibrozil 1-O- β -glucuronide, amiodarone, phenelzine and raloxifene as CYP2C8 inhibitors (Supplemental Table 1).

DMD # 85498

Materials and Methods

Materials. Pooled HLMs (UltraPool, lots 38290 and 38291) and human recombinant CYP2C8 expressed in baculovirus infected insect cells with human cytochrome b5 (Supersomes, lots 03459, 32804, 3221713, 5057003 and 7053001) were purchased from Corning (Corning, NY). Human recombinant CYP2C8 enzymes expressed in *Escherichia coli* with human cytochrome *b5* (low reductase Bactosomes, lot C2C8BLR001, and EasyCYP Bactosomes, lot C2C8BLR002) and membrane protein isolated from *Escherichia coli* containing empty expression plasmid (control Bactosomes, lot BAC092) were from Cypex (Dundee, UK). The rapid equilibrium dialysis device (RED) was purchased from Thermo Scientific (Waltham, MA). Amiodarone hydrochloride, amodiaquine dihydrochloride dehydrate and β -NADPH were from Sigma-Aldrich (St. Louis, MO). Clopidogrel acyl- β -D-glucuronide was purchased from Santa Cruz Biotechnology (Dallas, TX). Gemfibrozil 1-O- β -glucuronide, *N*-desethylamodiaquine hydrochloride, *N*-desethylamodiaquine-d5, phenelzine sulfate and raloxifene hydrochloride were from Toronto Research Chemicals (Toronto, ON, Canada). Bovine serum albumin (BSA) was purchased from Biowest (Nuaille, France). Other solvents and reagents were of analytical grade.

Incubation conditions. Time-dependent inactivation of CYP2C8 by clopidogrel acyl- β -D-glucuronide (5-250 μ M), gemfibrozil 1-O- β -glucuronide (100 μ M), amiodarone (100 μ M), phenelzine (100 μ M) and raloxifene (1 μ M) was studied in HLMs, Supersomes, EasyCYP Bactosomes and low-reductase Bactosomes using amodiaquine *N*-desethylation as the marker reaction for CYP2C8 activity. Incubations were conducted in 96-well plates using Tecan Freedom EVO 150 automated liquid handler (Männedorf, Switzerland). Inhibitors diluted in 0.1 M sodium phosphate buffer (pH 7.4) were prewarmed on a heated shaker (37°C, 350 rpm)

DMD # 85498

for 3 minutes with microsomes (0.5 mg/mL), followed by addition of NADPH (1 mM) and preincubation for 0, 2.5, 6, 12, 20 and 30 minutes. To minimize competitive CYP2C8 inhibition during the activity phase, protein and inhibitor concentrations were then diluted 20-fold by removing aliquots of the preincubation mixture to wells containing amodiaquine (10 μ M) and NADPH (1 mM) in buffer. The reaction mixture was incubated for 2 minutes (37°C, 350 rpm) and was stopped by mixing one part sample and three parts cold (4°C) stop solution (0.3% formic acid in acetonitrile:methanol:water 90:5:5 v/v/v) containing deuterium-labelled *N*-desethylamodiaquine as an internal standard. Samples were centrifuged for LC-MS/MS analysis. Incubations were performed in at least triplicates.

Clopidogrel acyl- β -D-glucuronide and phenelzine were dissolved in water, gemfibrozil 1-O- β -glucuronide and amiodarone in methanol and raloxifene in ethanol/water (4:1 v/v). The final solvent concentrations in incubations were 1% or less. The non-specific binding of 100 μ M clopidogrel acyl- β -D-glucuronide to HLMs, CYP2C8 Supersomes (lots 03459, 3221713 and 7053001), low reductase CYP2C8 Bactosomes and low reductase CYP2C8 EasyCYP Bactosomes (0.5 mg/mL) was determined by equilibrium analysis using the rapid equilibrium dialysis (RED) system.

Quantification of drug concentrations. *N*-desethylamodiaquine concentrations were determined using a Shimadzu Nexera liquid chromatography system coupled to a Shimadzu 8050 tandem mass spectrometer (Shimadzu Corporation, Kyoto, Japan). The analytical method was modified from a previously published method (Filppula et al., 2012). The only changes were a smaller injection volume (1 μ l) and faster gradient (5-100% B in eight minutes). The lower limit of quantification of *N*-desethylamodiaquine was 0.001 μ M and the upper limit of quantification was 3.125 μ M.

DMD # 85498

Clopidogrel, clopidogrel acyl- β -D-glucuronide, gemfibrozil and gemfibrozil-1-O- β -glucuronide concentrations were measured with a Nexera X2 liquid chromatograph (Shimadzu, Kyoto, Japan) coupled to a 5500 Qtrap or API3000 tandem mass spectrometer (AB Sciex, Toronto, Ontario, Canada). Clopidogrel and clopidogrel acyl- β -D-glucuronide were separated on a Sun Fire C18 analytical column (100x2.1 mm I.D., 3 μ m particle size; Waters, Millford, MA) using 2 mM ammonium acetate (pH 5.5) (mobile phase A) and acetonitrile (mobile phase B). The proportion of mobile phase B was linearly increased from 20% to 55% over 2.8 min, then maintained at 90% for 1.2 min and equilibrated back to 20%. The mobile phase flow rate and column oven temperature were set at 0.26 mL/min and 30 °C. The mass spectrometer was operated in positive polarity multi reaction mode (MRM+) utilizing the target mass-to-charge transitions (m/z) of 322 to 155 and 484 to 308 for clopidogrel and clopidogrel acyl- β -D-glucuronide. Deuterium-labelled clopidogrel and deuterium-labelled clopidogrel carboxylic acid served as internal standards.

The separation of gemfibrozil and gemfibrozil-1-O- β -glucuronide was performed on a Kinetex C18 column (75x2.1mm I.D., 2.6 μ m particle size; Phenomenex, Torrance, CA) using 2 mM ammonium acetate (pH 4) and acetonitrile (mobile phase B) in following gradient conditions: 1 min at 20% B on hold, then a linear increase from 20% B to 90% B over 4 min followed by equilibration back to the starting composition (20% B). The mass spectrometric detection of gemfibrozil and gemfibrozil-1-O- β -glucuronide were based on their characteristic negative mode (MRM-) transitions of 249 to 121 and 425 to 121 including the corresponding deuterium-labelled internal standards. The lower limits of quantitation of clopidogrel, clopidogrel acyl- β -D-glucuronide, gemfibrozil and gemfibrozil-1-O- β -glucuronide were 1 μ M, 0.5 μ M, 1 μ M and 0.5 μ M, respectively, and the day-to-day coefficient of variation were below 15% at relevant concentrations for all analytes.

DMD # 85498

The effects of BSA and microsomal protein on CYP2C8 inactivation by clopidogrel acyl- β -D-glucuronide. The effects of fatty acid binding by albumin on CYP2C8 inactivation by clopidogrel acyl- β -D-glucuronide were investigated in Supersomes. CYP2C8 Supersomes (0.5 mg/mL), clopidogrel acyl- β -D-glucuronide (100 μ M) and NADPH (1 mM) were preincubated with BSA (0.1% w/v), followed by dilution and incubation with amodiaquine (10 μ M) as described in incubation conditions.

To investigate the effect of microsomal protein on CYP2C8 inactivation, low reductase Bactosomes were diluted with control Bactosomes isolated from *Escherichia coli* host strain and sodium phosphate buffer to give similar CYP2C8 and microsomal protein concentrations as in EasyCYP Bactosomes (Table 1). Time-dependent inactivation of CYP2C8 by 100 μ M clopidogrel acyl- β -D-glucuronide was studied in diluted Bactosomes as described in incubation conditions.

Metabolic depletion of clopidogrel acyl- β -D-glucuronide and gemfibrozil 1-O- β -glucuronide. The extent of metabolic depletion of clopidogrel acyl- β -D-glucuronide (100 μ M) and gemfibrozil 1-O- β -glucuronide (100 μ M) during preincubation was studied in HLMS and CYP2C8 Supersomes. Following a 3-minute preincubation without NADPH (as described earlier), the inhibitor was preincubated for 0, 10 and 30 minutes with microsomes (0.5 mg/mL) and NADPH (1 mM) in 0.1 M sodium phosphate buffer (pH 7.4) with and without the β -glucuronidase inhibitor saccharolactone (5 mM). The reaction was stopped by mixing one part sample and three parts cold (4°C) acetonitrile and formic acid (99:1 v/v) containing either clopidogrel-d4 and clopidogrel-d4 carboxylic acid or gemfibrozil-d6 and gemfibrozil-d6 1-O- β -glucuronide as internal standards for clopidogrel and gemfibrozil LC-MS/MS methods, respectively.

DMD # 85498

The effect of clopidogrel on the CYP2C8 inactivation potency of clopidogrel acyl- β -D-glucuronide in HLMs. The effect of parent clopidogrel in the time-dependent inactivation of CYP2C8 by clopidogrel acyl- β -D-glucuronide was studied by preincubating 4, 40 or 200 μ M clopidogrel (and control containing no clopidogrel) with clopidogrel acyl- β -D-glucuronide (100 μ M), HLMs (0.5 mg/mL) and NADPH (1 mM), followed by dilution and incubation, as described in incubation conditions.

Determination of kinetic parameters of inactivation. The maximum inactivation rate (k_{inact}) and the inhibitor concentration needed to cause half of k_{inact} (K_I) were determined for clopidogrel acyl- β -D-glucuronide in Supersomes and Bactosomes. Various inhibitor concentrations were incubated as described above and based on these results, k_{inact} and K_I were estimated by nonlinear regression in SigmaPlot, version 13.0 (Systat Software, San Jose, CA) using the following equation:

$$k_{obs} = \frac{k_{inact} \times [I]}{K_I + [I]}$$

where k_{obs} is the initial rate constant of CYP2C8 inactivation by each inhibitor concentration [I].

Spectral binding. The binding affinity of clopidogrel acyl- β -D-glucuronide to CYP2C8 in Supersomes and Bactosomes was studied in spectral binding experiments. CO difference spectral scanning was first performed to determine the CYP2C8 concentration in Bactosomes. Supersomes or Bactosomes were then diluted in 0.1 M potassium phosphate buffer (pH 7.4) to a final CYP2C8 concentration of 0.5 μ M. Aliquots (400 μ L each) of diluted CYP2C8 were

DMD # 85498

placed into two quartz cuvettes. The cuvettes were placed in the spectrophotometer and allowed to equilibrate to 25°C for 10 minutes, after which a baseline spectrum was obtained. Clopidogrel acyl- β -D-glucuronide was titrated (1 μ L additions) into the sample cuvette over a range of concentrations from 0.12 μ M to 12 μ M, using a positive displacement pipette. With each addition of ligand to the sample cuvette, 1 μ L of 4:1 MeOH:DMSO was added to the reference cuvette. After each titration, a difference spectrum was recorded. Spectra were recorded on a Modernized Aminco DW-2 UV/Vis spectrophotometer controlled with Olis Spectral Works software v. 5.888.181 (Olis Inc, Bogart, GA). The cuvette temperature was held constant at 25 °C with an external water bath temperature controller. The spectrophotometer was set to scan from 500 nm – 350 nm and average 6 data points at every 0.5 nm interval. The baseline spectrum was subtracted individually from each titration spectra. Each spectra was normalized to CYP content. The difference in absorbance between the peak (A_{\max}) and trough (A_{\min}) was determined for each titration (Supersomes: $A_{406} - A_{425}$; Bactosomes: $A_{405} - A_{422}$) and plotted as a function of clopidogrel acyl- β -D-glucuronide concentration. An Eadie-Hofstee transformation was used to determine linearity indicating a single binding event. Using GraphPad Prism, version 6.07 (GraphPad Software, La Jolla, CA), a non-linear regression analysis was performed to determine apparent spectral dissociation constants (K_s) of clopidogrel acyl- β -D-glucuronide to CYP2C8 Supersomes and CYP2C8 Bactosomes (Locuson et al., 2007).

DMD # 85498

Results

Non-specific binding of clopidogrel acyl- β -D-glucuronide. The unbound fractions of 100 μ M clopidogrel acyl- β -D-glucuronide in HLMs, CYP2C8 Supersomes (lots 03459, 3221713 and 7053001), CYP2C8 Bactosomes and CYP2C8 EasyCYP Bactosomes varied from 0.90 to 0.95, indicating only 5-10% nonspecific binding (Table 1).

Time-dependent inactivation of CYP2C8 by amiodarone, clopidogrel acyl- β -D-glucuronide, gemfibrozil 1-O- β -glucuronide, phenelzine and raloxifene. The variability between enzyme preparations in TDI of CYP2C8 was small for amiodarone. Preincubation of amiodarone (100 μ M) with NADPH for 30 minutes caused 47-55% inhibition of CYP2C8 activity in HLMs, Bactosomes and Supersome lot 7053001 (Figure 1A). A slightly weaker inactivation of CYP2C8 was observed in EasyCYP Bactosomes and Supersome lot 5057003 (34-36% inhibition).

Considerably higher variation in TDI results was observed for clopidogrel acyl- β -D-glucuronide, gemfibrozil 1-O- β -glucuronide and phenelzine. After 30 minutes, 100 μ M clopidogrel acyl- β -D-glucuronide caused 72% inhibition of CYP2C8 activity in HLMs, 63% inhibition in Bactosomes and 54% inhibition in Supersome lot 7053001, but significant inactivation could not be reliably detected in three other Supersome lots (03459, 3221713 and 5057003) or EasyCYP Bactosomes (Figure 1-2). In CYP2C8 Bactosomes mixed with control Bactosomes, clopidogrel acyl- β -D-glucuronide produced only a slight reduction in CYP2C8 activity (22% inhibition), comparable to that in EasyCYP Bactosomes (Figure 1B).

A similar trend was observed for gemfibrozil 1-O- β -glucuronide. After 30 minutes, CYP2C8 inactivation by 100 μ M gemfibrozil 1-O- β -glucuronide was prominent in Supersome lot 7053001 (95% inhibition), HLMs (91% inhibition), and Bactosomes (88%

DMD # 85498

inhibition) (Figure 1C). In EasyCYP Bactosomes and Supersome lot 5057003, inactivation was considerably slower and weaker, reaching 72% and 66% inhibition at 30 minutes, respectively.

Preincubation with 100 μ M phenelzine, on the other hand, resulted in significant TDI only in Supersome lot 7053001 (91% inhibition after 30 minutes), which had the highest CYP2C8 activity, while TDI in HLMs, Bactosomes, EasyCYP Bactosomes and another Supersome lot was only 35% or less. To rule out high CYP2C8 activity as the cause for the rapid inactivation in Supersome lot 7053001, we preincubated 100 μ M phenelzine with NADPH in diluted Supersomes (lot 7053001, 0.1 mg/ml), and found that dilution of Supersomes did not affect inactivation of CYP2C8 by phenelzine (89% inhibition at 30 minutes) (Figure 1D).

Raloxifene (1 μ M) caused only slight TDI in Bactosomes, EasyCYP Bactosomes and Supersome lot 7053001 (18-20% inhibition after 30 minutes, data not shown). No relevant CYP2C8 inactivation by raloxifene could be detected in HLMs or Supersome lot 5057003 (inhibition 10% or less).

Effect of BSA on the inactivation of CYP2C8 by clopidogrel acyl- β -D-glucuronide. The effect of BSA was studied in the Supersome lots with the weakest CYP2C8 inactivation (lots 03459, 3221713 and 5057003). Addition of 0.1% w/v BSA slightly reduced the unbound fraction of clopidogrel acyl- β -D-glucuronide (Table 1), and did not have a significant effect on CYP2C8 inactivation in any of the Supersome lots tested (Figures 2-3).

Metabolic depletion of clopidogrel acyl- β -D-glucuronide and gemfibrozil 1-O- β -glucuronide. No significant depletion of clopidogrel acyl- β -D-glucuronide or gemfibrozil 1-

DMD # 85498

O- β -glucuronide could be observed in Supersomes or HLMS during a 30-minute preincubation with NADPH (Figure 4). However, some loss of clopidogrel acyl- β -D-glucuronide had occurred in Supersomes already during the 3-minute equilibration at 37°C prior to NADPH addition initiating the preincubation, which was apparently due to conversion to clopidogrel. Accordingly, at the start of preincubation, clopidogrel concentration was higher in Supersome samples (7 and 6 μ M at 0 and 30 minutes, respectively) than in HLM samples (3 and <1 μ M at 0 and 30 minutes, respectively). Gemfibrozil concentration was similar in all samples (<1 μ M). However, the β -glucuronidase inhibitor saccharolactone had no effect on the concentrations of clopidogrel or gemfibrozil or the depletion of clopidogrel acyl- β -D-glucuronide or gemfibrozil 1-O- β -glucuronide in the incubations.

The effect of clopidogrel on the CYP2C8 inactivation potency of clopidogrel acyl- β -D-glucuronide in HLMS. Addition of 4 or 40 μ M of clopidogrel to the 30-minute preincubation in HLMS did not have a significant effect on the inactivation rate of CYP2C8 by clopidogrel acyl- β -D-glucuronide, while addition of 200 μ M clopidogrel decreased TDI only slightly (61% and 66% inhibition at 30 minutes, with and without clopidogrel, respectively). The k_{obs} values of CYP2C8 inactivation by 100 μ M clopidogrel acyl- β -D-glucuronide with 0, 4, 40 and 200 μ M clopidogrel were 0.046, 0.038, 0.039 and 0.027 min^{-1} , respectively (Figure 2).

CYP2C8 inactivation kinetics in Supersomes and Bactosomes. In inactivation kinetic experiments with Supersome lot 3221713, inactivation could not be detected even with 250 μ M clopidogrel acyl- β -D-glucuronide (Figure 5A). In Bactosomes, inhibition of CYP2C8

DMD # 85498

activity by clopidogrel acyl- β -D-glucuronide was concentration and time-dependent, with K_I and k_{inact} of 14 μ M and 0.054 min^{-1} , respectively (Figures 5B-C).

Binding of clopidogrel acyl- β -D-glucuronide to Supersomes and Bactosomes.

Spectral binding studies were conducted in order to investigate whether the inhibitor affinity of clopidogrel acyl- β -D-glucuronide to CYP2C8 differed between Supersomes and Bactosomes. The spectral dissociation constant, K_s , was lower in Bactosomes (0.41 ± 0.06 μ M) compared to Supersomes (1.4 ± 0.2 μ M, lot 5057003) (Figure 6, Supplemental Figure 1).

DMD # 85498

Discussion

The results of the present study show that inactivation of CYP2C8 by four known mechanism-based CYP2C8 inhibitors varies considerably between different enzyme preparations. While inactivation of CYP2C8 was weak or almost absent in some of the recombinant enzyme preparations, particularly certain Supersome lots, inactivation of CYP2C8 by the clinically significant inhibitors (glucuronides of clopidogrel and gemfibrozil) could generally be reliably detected in HLMs. Moreover, the degree of variation between the preparations was to some extent inhibitor-dependent. Clopidogrel acyl- β -D-glucuronide and gemfibrozil 1-O- β -glucuronide caused strong inactivation in HLMs, Bactosomes and Supersome lot 7053001, but had little or only moderate effect in the other Supersome lots and EasyCYP Bactosomes. The kinetic parameters of inactivation of clopidogrel acyl- β -D-glucuronide determined in Bactosomes were similar to those determined previously in HLMs (K_I 9.9 μ M and k_{inact} 0.047 min^{-1}) (Tornio et al., 2014). In contrast, phenelzine caused strong inactivation only in Supersome lot 7053001, and considerably weaker inactivation in the other enzyme preparations, including HLMs, which resembles the previously reported 45-fold smaller K_I of phenelzine in recombinant CYP2C8 than in HLMs (Polasek et al., 2004) (Supplemental Table 2).

A similar discrepancy in CYP2C8 inactivation between recombinant CYP2C8 and HLMs has been previously reported also for amiodarone (Polasek et al., 2004) (Supplemental Table 2). In our experiments, however, CYP2C8 inactivation by amiodarone (100 μ M) was weak, and showed only little variation between enzyme sources (34-55% inhibition after 30 minutes). On the other hand, CYP2C8 inactivation by 1 μ M raloxifene was substantially weaker in all preparations compared to the previously reported inactivation parameters in Supersomes (K_I 0.26 μ M and k_{inact} 0.1 min^{-1}) (VandenBrink et al., 2012). Notably, in contrast

DMD # 85498

to gemfibrozil and clopidogrel, phenelzine, amiodarone and raloxifene have not been shown to cause clinically relevant CYP2C8 inhibition.

To examine the potential causes for the observed variation in CYP2C8 inactivation potency, we performed a range of experiments. Spectral binding data suggests that clopidogrel acyl- β -D-glucuronide binds more tightly to CYP2C8 in Bactosomes than in Supersomes, which might partially explain the lack of significant inactivation in certain Supersome lots. According to the manufacturers, the primary sequences of the recombinant CYP2C8 were identical to the native sequence of human CYP2C8, with the exception of alanine and proline added to the N-terminal end in Bactosomes. Thus, differences in the primary protein sequence are unlikely to explain the observed differences in binding and inactivation potency. Yet, functionality of the enzyme can be altered also by differences in cellular environment between human, insect and bacterial cells, such as different lipid composition of the membrane, pH, oxidative stress and chaperone proteins (Marheineke et al., 1998; Nannenga and Baneyx, 2011; Brignac-Huber et al., 2016). These differences could affect the conformation, folding or positioning of CYPs in membranes, which in turn could prevent covalent modifications or metabolite-intermediate complexation caused by mechanism-based inhibitors. It has been proposed that positioning of CYP enzymes on the insect cell membranes might differ from their positioning in the membrane of the endoplasmic reticulum in human hepatocytes (Zhang et al., 2004). Moreover, membrane-bound CYP2C8 has been shown to form homomeric dimers, which can cause conformational changes in the F/G loops of the enzymes, possibly affecting substrate binding and inhibiting metabolism of hydrophobic substrates (Schoch et al., 2004; Hu et al., 2010; Reed and Backes, 2017). The aggregation properties of CYPs are affected by the microsomal lipid composition, the lipid/protein ratio and the concentrations of the redox partners of CYP enzymes (Backes and Kelley, 2003), which can differ markedly between expression systems and human cells.

DMD # 85498

In addition, the lipid composition of the membrane affects the interaction of CYPs and their redox partners (Brignac-Huber et al., 2016). Interestingly, the differences in strength of inhibition between the tested preparations showed a trend for correlation with cytochrome c reductase activity but not with the other variables (Table 1, Supplemental Figure 2).

Theoretically, the presence of relatively higher concentrations of microsomal protein and possibly different lipid composition in EasyCYP Bactosomes and some of the Supersome lots could result in greater non-specific binding of the inhibitors, reducing their apparent inhibitory effects. To reduce these possibilities, we used the same total protein concentration in all experiments. Accordingly, the fraction unbound of clopidogrel acyl- β -D-glucuronide was similar (0.90-0.92) in all the recombinant enzyme preincubation mixtures. However, when we added control Bactosome membrane protein to low reductase Bactosomes to get a similar composition as in EasyCYPs, clopidogrel acyl- β -D-glucuronide produced a similar slow reduction in CYP2C8 activity as in EasyCYP Bactosomes. Thus, the addition of microsomal constituents weakens the sensitivity to detect TDI of CYP2C8 by clopidogrel acyl- β -D-glucuronide in Bactosomes. As microsomal preparations contain long-chain fatty acids that markedly inhibit CYP2C8 (Palacharla et al., 2017), we tested whether sequestration of fatty acids with albumin increases the CYP2C8 inhibitory effect of clopidogrel acyl- β -D-glucuronide in Supersomes. However, addition of 0.1% w/v BSA did not augment the inhibition caused by clopidogrel acyl- β -D-glucuronide.

Finally, variation in the depletion of inhibitor during preincubation may also contribute to differences in the degree of inactivation between different enzyme sources (Van et al., 2007). Glucuronide hydrolysis by β -glucuronidase has been observed previously in HLMs and insect cell preparations (Oleson and Court, 2008). In our experiments, depletion of clopidogrel and gemfibrozil glucuronides was negligible during the 30-minute preincubation in HLMs and Supersomes and was not influenced by the β -glucuronidase inhibitor

DMD # 85498

saccharolactone. However, about one tenth of clopidogrel acyl- β -D-glucuronide had been converted to clopidogrel during the 3-minute equilibration before starting the 30-minute preincubations in Supersomes, while only a small amount of clopidogrel had been formed in HLMs. It is noteworthy that in the presence of methanol, clopidogrel acyl- β -D-glucuronide can be converted to clopidogrel (Silvestro et al., 2011), and therefore we avoided the use of methanol as a solvent. As clopidogrel acyl- β -D-glucuronide was stable during the preincubation and not influenced by saccharolactone, the reason for formation of clopidogrel before the preincubation remains unknown. Nevertheless, the concentration of clopidogrel during the preincubation (6-7 μ M) could have been high enough to cause competitive inhibition of CYP2C8, since its half-maximal inhibitory concentration (IC_{50}) ranges from 2.8 to 53.6 μ M *in vitro* (Walsky et al., 2005; Floyd et al., 2012; Tornio et al., 2014). Such competitive inhibition could reduce TDI of CYP2C8. However, addition of up to 200 μ M clopidogrel to a standard preincubation in HLMs resulted only in minor decreases of CYP2C8 inactivation by 100 μ M clopidogrel acyl- β -D-glucuronide.

While gemfibrozil 1-O- β -glucuronide, clopidogrel acyl- β -D-glucuronide and amiodarone are considered to be mechanism-based inhibitors of CYP2C8, CYP2C8 inhibition by phenelzine is not fully consistent with mechanism-based inhibition and is at least partly reversible (Polasek et al., 2004; Ogilvie et al., 2006; Tornio et al., 2014). Mechanistic differences may partially explain why we were unable to show inactivation of CYP2C8 by phenelzine in most experiments, including those with HLMs, while phenelzine caused a particularly strong inactivation in the CYP2C8 Supersome lot that was most sensitive to the other inhibitors. Of note, similar disparities have been observed also with other monoamine inhibitors, tricyclic antidepressants, cimetidine and tamoxifen (Supplemental Table 2) (Zhao et al., 2002; Madeira et al., 2004; Polasek et al., 2004; Polasek and Miners, 2008), where TDI has usually been considerably stronger in recombinant enzyme systems than in HLMs or

DMD # 85498

hepatocytes. Moreover, in one study with MDMA, CYP2D6 Bactosomes produced significantly higher K_i values compared to CYP2D6 Supersomes and yeast microsomes (Van et al., 2007). Unlike amiodarone and phenelzine, the glucuronides of gemfibrozil and clopidogrel have been shown to cause CYP2C8 inactivation at clinically relevant doses of the parent drugs, leading to clinically important drug-drug interactions (Backman et al., 2002; Niemi et al., 2003; Jaakkola et al., 2005; Karonen et al., 2010; Filppula et al., 2013; Tornio et al., 2014; Menon et al., 2015; Backman et al., 2016). Their CYP2C8 inactivating effect was strong in HLMs, suggesting that HLMs are the most reliable system to screen clinically relevant inactivation of CYP2C8. We are not aware of any clinically relevant mechanism-based inhibitors of CYP enzymes, whose TDI effect could not be observed in HLMs.

Taken together, our results indicate that there are major differences between enzyme sources in sensitivity to detect TDI of CYP2C8. The differences are inhibitor-dependent, which makes the phenomenon complex. While TDI of CYP2C8 by the glucuronides of clopidogrel and gemfibrozil was strong in HLMs and Bactosomes and extremely weak or even absent in some Supersome lots, TDI by the non-glucuronide compound phenelzine could only be observed in Supersomes. Our findings suggest that neither nonspecific binding, depletion of inhibitor nor inhibitory fatty acids explain the weak inactivation in some enzyme preparations. However, differences in other microsomal constituents, binding affinity and conversion of clopidogrel acyl- β -D-glucuronide to clopidogrel may play some role. Generally, it appears that even slight differences between lots of recombinant enzymes may lead to inability to detect mechanism-based inhibition. Further studies are needed to elucidate the causes of such variation. Nonetheless, it is important to recognize that while human liver microsomes are generally reliable and produce clinically useful results, there is a risk of false negatives if recombinant enzymes are used to detect mechanism-based inhibition of CYP enzymes.

DMD # 85498

Authorship Contributions

Participated in research design: Kahma, Filppula, Totah, Backman

Conducted the experiments: Kahma, Evangelista, Launiainen, Viinamäki, Neuvonen

Performed data analysis: Kahma, Evangelista, Backman

Wrote or contributed to the writing of the manuscript: All authors

DMD # 85498

References

- Backes WL and Kelley RW (2003) Organization of multiple cytochrome P450s with NADPH-cytochrome P450 reductase in membranes. *Pharmacol Ther* **98**: 221-233.
- Backman JT, Filppula AM, Niemi M, and Neuvonen PJ (2016) Role of Cytochrome P450 2C8 in Drug Metabolism and Interactions. *Pharmacol Rev* **68**: 168-241.
- Backman JT, Kyrklund C, Neuvonen M, and Neuvonen PJ (2002) Gemfibrozil greatly increases plasma concentrations of cerivastatin. *Clin Pharmacol Ther* **72**: 685-691.
- Brignac-Huber LM, Park JW, Reed JR, and Backes WL (2016) Cytochrome P450 Organization and Function Are Modulated by Endoplasmic Reticulum Phospholipid Heterogeneity. *Drug Metab Dispos* **44**: 1859-1866.
- Filppula AM, Laitila J, Neuvonen PJ, and Backman JT (2012) Potent mechanism-based inhibition of CYP3A4 by imatinib explains its liability to interact with CYP3A4 substrates. *Br J Pharmacol* **165**: 2787-2798.
- Filppula AM, Tornio A, Niemi M, Neuvonen PJ, and Backman JT (2013) Gemfibrozil impairs imatinib absorption and inhibits the CYP2C8-mediated formation of its main metabolite. *Clin Pharmacol Ther* **94**: 383-393.
- Floyd JS, Kaspera R, Marciante KD, Weiss NS, Heckbert SR, Lumley T, Wiggins KL, Tamraz B, Kwok PY, Totah RA, and Psaty BM (2012) A screening study of drug-drug interactions in cerivastatin users: an adverse effect of clopidogrel. *Clin Pharmacol Ther* **91**: 896-904.

DMD # 85498

Gröer C, Busch D, Patrzyk M, Beyer K, Busemann A, Heidecke CD, Drozdik M, Siegmund W, and Oswald S (2014) Absolute protein quantification of clinically relevant cytochrome P450 enzymes and UDP-glucuronosyltransferases by mass spectrometry-based targeted proteomics. *J Pharm Biomed Anal* **100**: 393-401.

Hu G, Johnson EF, and Kemper B (2010) CYP2C8 exists as a dimer in natural membranes. *Drug Metab Dispos* **38**: 1976-1983.

Jaakkola T, Backman JT, Neuvonen M, and Neuvonen PJ (2005) Effects of gemfibrozil, itraconazole, and their combination on the pharmacokinetics of pioglitazone. *Clin Pharmacol Ther* **77**: 404-414.

Kahma H, Filppula AM, Neuvonen M, Tarkiainen EK, Tornio A, Holmberg MT, Itkonen MK, Finel M, Neuvonen PJ, Niemi M, and Backman JT (2018) Clopidogrel Carboxylic Acid Glucuronidation is Mediated Mainly by UGT2B7, UGT2B4, and UGT2B17: Implications for Pharmacogenetics and Drug-Drug Interactions. *Drug Metab Dispos* **46**: 141-150.

Karonen T, Filppula A, Laitila J, Niemi M, Neuvonen PJ, and Backman JT (2010) Gemfibrozil markedly increases the plasma concentrations of montelukast: a previously unrecognized role for CYP2C8 in the metabolism of montelukast. *Clin Pharmacol Ther* **88**: 223-230.

Kawakami H, Ohtsuki S, Kamiie J, Suzuki T, Abe T, and Terasaki T (2011) Simultaneous absolute quantification of 11 cytochrome P450 isoforms in human liver microsomes by liquid chromatography tandem mass spectrometry with in silico target peptide selection. *J Pharm Sci* **100**: 341-352.

DMD # 85498

Kumar V, Rock DA, Warren CJ, Tracy TS, and Wahlstrom JL (2006) Enzyme source effects on CYP2C9 kinetics and inhibition. *Drug Metab Dispos* **34**: 1903-1908.

Locuson CW, Hutzler JM, and Tracy TS (2007) Visible spectra of type II cytochrome P450-drug complexes: evidence that "incomplete" heme coordination is common. *Drug Metab Dispos* **35**: 614-622.

Madeira M, Levine M, Chang TK, Mirfazaelian A, and Bellward GD (2004) The effect of cimetidine on dextromethorphan O-demethylase activity of human liver microsomes and recombinant CYP2D6. *Drug Metab Dispos* **32**: 460-467.

Mano Y, Usui T, and Kamimura H (2007) The UDP-glucuronosyltransferase 2B7 isozyme is responsible for gemfibrozil glucuronidation in the human liver. *Drug Metab Dispos* **35**: 2040-2044.

Marheineke K, Grunewald S, Christie W, and Reilander H (1998) Lipid composition of *Spodoptera frugiperda* (Sf9) and *Trichoplusia ni* (Tn) insect cells used for baculovirus infection. *FEBS Lett* **441**: 49-52.

Menon RM, Badri PS, Wang T, Polepally AR, Zha J, Khatri A, Wang H, Hu B, Coakley EP, Podsadecki TJ, Awni WM, and Dutta S (2015) Drug-drug interaction profile of the all-oral anti-hepatitis C virus regimen of paritaprevir/ritonavir, ombitasvir, and dasabuvir. *J Hepatol* **63**: 20-29.

Nannenga BL and Baneyx F (2011) Reprogramming chaperone pathways to improve membrane protein expression in *Escherichia coli*. *Protein Sci* **20**: 1411-1420.

Niemi M, Backman JT, Neuvonen M, and Neuvonen PJ (2003) Effects of gemfibrozil, itraconazole, and their combination on the pharmacokinetics and pharmacodynamics of

DMD # 85498

repaglinide: potentially hazardous interaction between gemfibrozil and repaglinide.

Diabetologia **46**: 347-351.

Ogilvie BW, Zhang D, Li W, Rodrigues AD, Gipson AE, Holsapple J, Toren P, and Parkinson A (2006) Glucuronidation converts gemfibrozil to a potent, metabolism-dependent inhibitor of CYP2C8: implications for drug-drug interactions. *Drug Metab Dispos* **34**: 191-197.

Oleson L and Court MH (2008) Effect of the beta-glucuronidase inhibitor saccharolactone on glucuronidation by human tissue microsomes and recombinant UDP-glucuronosyltransferases. *J Pharm Pharmacol* **60**: 1175-1182.

Palacharla RC, Uthukam V, Manoharan A, Ponnamaneni RK, Padala NP, Boggavarapu RK, Bhyrapuneni G, Ajjala DR, and Nirogi R (2017) Inhibition of cytochrome P450 enzymes by saturated and unsaturated fatty acids in human liver microsomes, characterization of enzyme kinetics in the presence of bovine serum albumin (0.1 and 1.0% w/v) and in vitro - in vivo extrapolation of hepatic clearance. *Eur J Pharm Sci* **101**: 80-89.

Parkinson A, Kazmi F, Buckley DB, Yerino P, Ogilvie BW, and Paris BL (2010) System-dependent outcomes during the evaluation of drug candidates as inhibitors of cytochrome P450 (CYP) and uridine diphosphate glucuronosyltransferase (UGT) enzymes: human hepatocytes versus liver microsomes versus recombinant enzymes. *Drug Metab Pharmacokinet* **25**: 16-27.

Polasek TM and Miners JO (2008) Time-dependent inhibition of human drug metabolizing cytochromes P450 by tricyclic antidepressants. *Br J Clin Pharmacol* **65**: 87-97.

DMD # 85498

Polasek TM, Elliot DJ, Lewis BC, and Miners JO (2004) Mechanism-based inactivation of human cytochrome P4502C8 by drugs in vitro. *J Pharmacol Exp Ther* **311**: 996-1007.

Reed JR and Backes WL (2017) Physical Studies of P450-P450 Interactions: Predicting Quaternary Structures of P450 Complexes in Membranes from Their X-ray Crystal Structures. *Front Pharmacol* **8**: 28.

Schoch GA, Yano JK, Wester MR, Griffin KJ, Stout CD, and Johnson EF (2004) Structure of human microsomal cytochrome P450 2C8. Evidence for a peripheral fatty acid binding site. *J Biol Chem* **279**: 9497-9503.

Silverman RB (1995) Mechanism-based enzyme inactivators. *Methods Enzymol* **249**: 240-283.

Silvestro L, Gheorghe M, Iordachescu A, Ciuca V, Tudoroni A, Rizea Savu S, and Tarcomnicu I (2011) Development and validation of an HPLC-MS/MS method to quantify clopidogrel acyl glucuronide, clopidogrel acid metabolite, and clopidogrel in plasma samples avoiding analyte back-conversion. *Anal Bioanal Chem* **401**: 1023-1034.

Tornio A, Filppula AM, Kailari O, Neuvonen M, Nyrönen TH, Tapaninen T, Neuvonen PJ, Niemi M, and Backman JT (2014) Glucuronidation converts clopidogrel to a strong time-dependent inhibitor of CYP2C8: a phase II metabolite as a perpetrator of drug-drug interactions. *Clin Pharmacol Ther* **96**: 498-507.

Van LM, Hargreaves JA, Lennard MS, Tucker GT, and Rostami-Hodjegan A (2007) Inactivation of CYP2D6 by methylenedioxymethamphetamine in different recombinant expression systems. *Eur J Pharm Sci* **32**: 8-16.

DMD # 85498

VandenBrink BM, Davis JA, Pearson JT, Foti RS, Wienkers LC, and Rock DA (2012) Cytochrome p450 architecture and cysteine nucleophile placement impact raloxifene-mediated mechanism-based inactivation. *Mol Pharmacol* **82**: 835-842.

Walsky RL, Gaman EA, and Obach RS (2005) Examination of 209 drugs for inhibition of cytochrome P450 2C8. *J Clin Pharmacol* **45**: 68-78.

Zhang Z, Li Y, Shou M, Zhang Y, Ngui JS, Stearns RA, Evans DC, Baillie TA, and Tang W (2004) Influence of different recombinant systems on the cooperativity exhibited by cytochrome P4503A4. *Xenobiotica* **34**: 473-486.

Zhao XJ, Jones DR, Wang YH, Grimm SW, and Hall SD (2002) Reversible and irreversible inhibition of CYP3A enzymes by tamoxifen and metabolites. *Xenobiotica* **32**: 863-878.

DMD # 85498

Footnotes

This study has been financially supported by a grant from the Academy of Finland [Grant decision 278123, 2014] Finland) and by State funding for university-level health research, Finland.

This work was previously presented as a poster at the 1st Nordic Conference on Personalized Medicine (NORPM), May 30 – June 1, 2018, Nyborg, Denmark.

DMD # 85498

Figure Legends

Figure 1. Time-dependent inactivation of CYP2C8 by 100 μ M clopidogrel acyl- β -D-glucuronide (A), 100 μ M gemfibrozil 1-O- β -glucuronide (B), 100 μ M amiodarone (C) and 100 μ M phenelzine (D) in HLMs, Bactosomes, EasyCYP Bactosomes and Supersome lots 5057003 and 7053001. Each point represents the mean \pm SD of quadruplicate incubations.

Figure 2. The initial inactivation constants (k_{obs}) (1/min) of 100 μ M amiodarone (AMD), 100 μ M clopidogrel acyl- β -D-glucuronide (CAG), 100 μ M gemfibrozil 1-O- β -glucuronide (GFG), 100 μ M phenelzine (PHZ) and 1 μ M raloxifene (RLX) in different enzyme sources.

Figure 3. Residual CYP2C8 activity after preincubating 100 μ M clopidogrel acyl- β -D-glucuronide for 0 and 30 minutes in Supersome lots 03459, 3221713, 5057003 and 7053001 with and without BSA. Each bar represents the mean \pm SD of quadruplicate incubations.

Figure 4. Depletion of 100 μ M clopidogrel acyl- β -D-glucuronide (A) and 100 μ M gemfibrozil 1-O- β -glucuronide (B) in HLMs and Supersomes with and without saccharolactone. Each point represents the mean \pm SD of triplicate incubations.

Figure 5. Time and concentration-dependent inactivation of CYP2C8 by clopidogrel acyl- β -D-glucuronide in Supersome lot 3221713 (A) and low reductase Bactosomes (B) and respective k_{obs} vs. concentration plot (C). Each point represents the mean \pm SD of quadruplicate incubations.

DMD # 85498

Figure 6. Absorbance differences observed with increasing concentrations of clopidogrel acyl- β -glucuronide, using CYP2C8 Bactosomes (A) and two different lots of CYP2C8 Supersomes (B and C). The data were transformed to plot the absorbance difference as a function of the ratio of the absorbance difference and substrate concentration (D-F). Once linearity was determined, the original plots were fitted to a hyperbolic function to determine the apparent spectral dissociation constants (K_s) of clopidogrel acyl- β -glucuronide to CYP2C8 enzyme systems.

Tables**Table 1.** Concentrations of CYP2C8 and other constituents in preincubations in the different enzyme preparations.

| | Microsomal protein | CYP2C8 | Cytochrome b5 | Cytochrome b5 CYP2C8 | Cytochrome c reductase activity | fu, 100 μ M clopidogrel acyl- β -D-glucuronide |
|---------------------------------------|--------------------|--------------------|---------------|-------------------------|------------------------------------|--|
| | (mg/ml) | (pmol/ml) | (pmol/ml) | | (nmol/min) | |
| HLMs, lot 38290 | 0.50 | 13.45 ^a | 260.00 | 19.33 ^a | 27.00 | 0.95 |
| Bactosomes, lot C2C8BLR001 | 0.50 | 315.40 | 1591.67 | 5.05 | 16.00 | 0.90 |
| Bactosomes with control protein | 0.50 | 50.67 | 254.67 | 5.03 | 2.69 | ND |
| EasyCYP Bactosomes, lot C2C8BLR002 | 0.50 | 50.00 | 250.00 | 5.00 | 2.10 | 0.90 |
| Supersomes, lot 03459 | 0.50 | 161.50 | 340.00 | 2.11 | 23.00 | 0.91 |
| Supersomes, lot 3221713 | 0.50 | 63.50 | 150.00 | 2.36 | 7.20 | 0.92 |
| Supersomes, lot 3221713 + BSA | 0.50 | 63.50 | 150.00 | 2.36 | 7.20 | 0.83 |
| Supersomes, lot 5057003 | 0.50 | 64.00 | 95.00 | 1.48 | 7.00 | ND |

DMD # 85498

| | | | | | | |
|----------------------------------|------|--------|--------|------|-------|------|
| Supersomes, lot 7053001 | 0.50 | 143.00 | 210.00 | 1.47 | 23.00 | 0.91 |
| Supersomes, lot 7053001 + BSA | 0.50 | 143.00 | 210.00 | 1.47 | 23.00 | 0.86 |

^aCYP2C8 abundance based on average CYP2C8 protein amount in HLMs (Kawakami et al., 2011; Gröer et al., 2014). fu, fraction unbound;

ND, not defined.

Figures

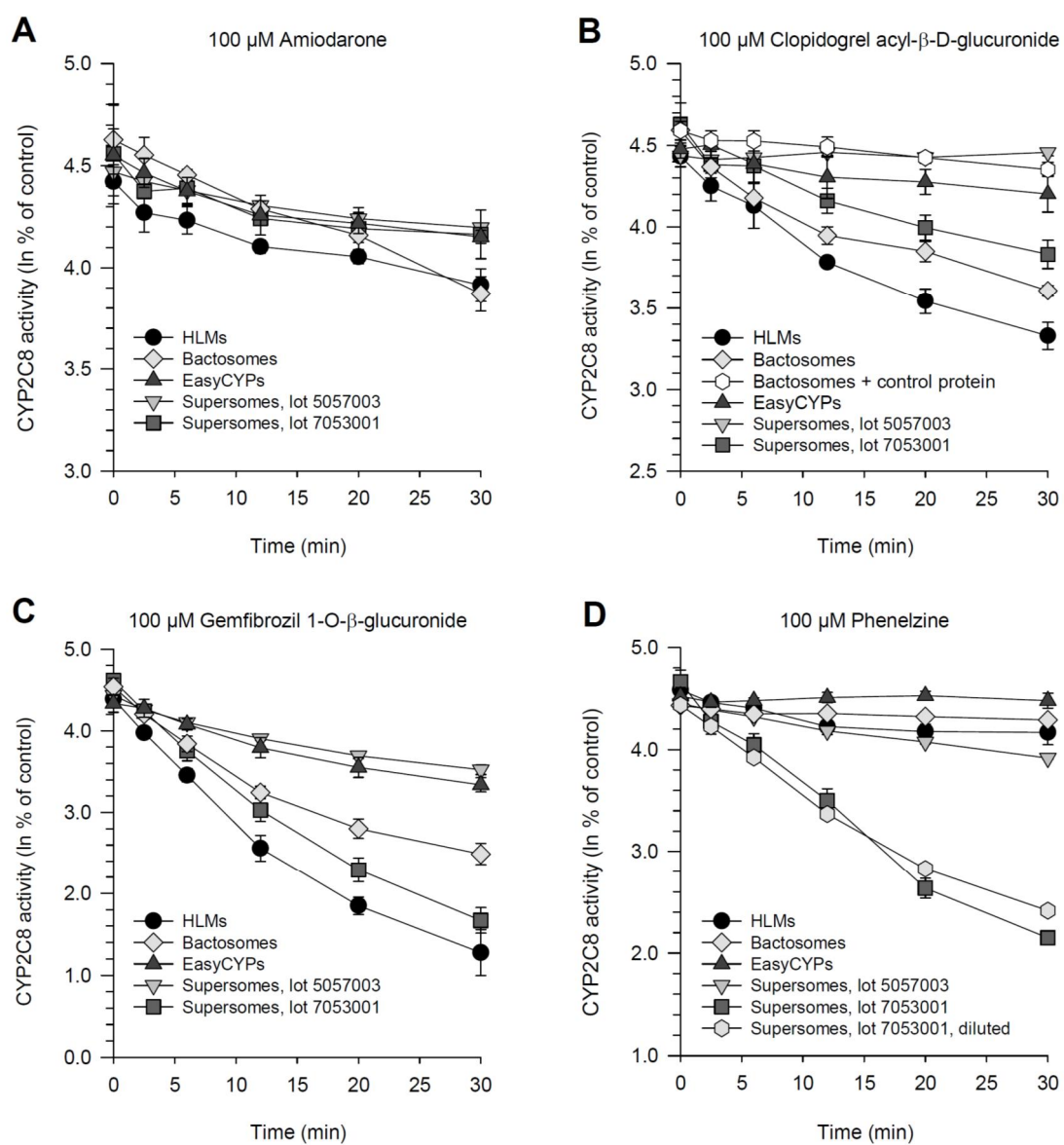


Figure 1.

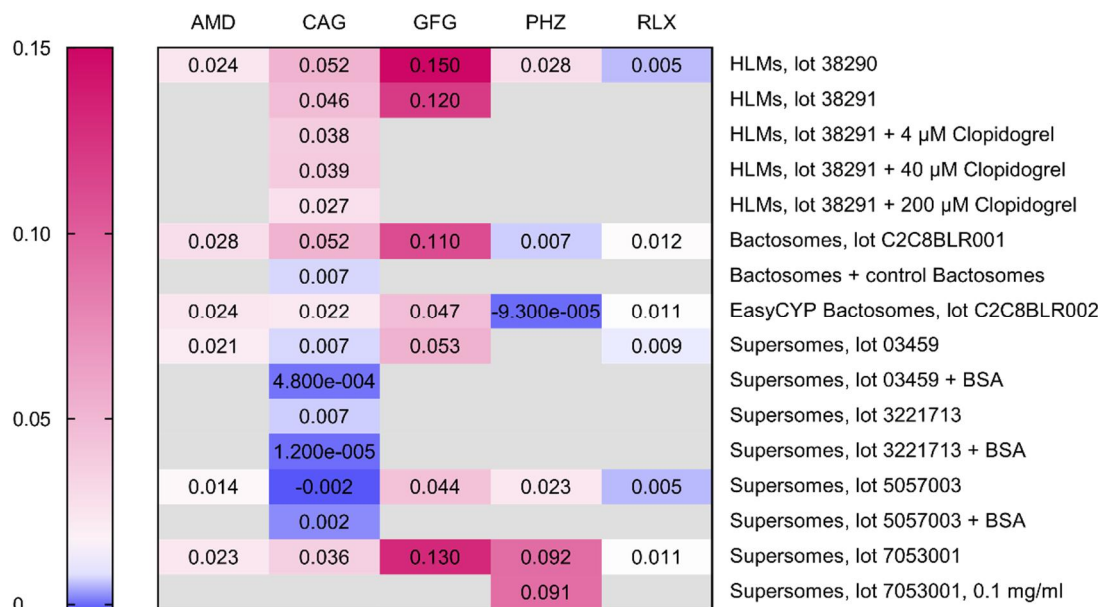


Figure 2.

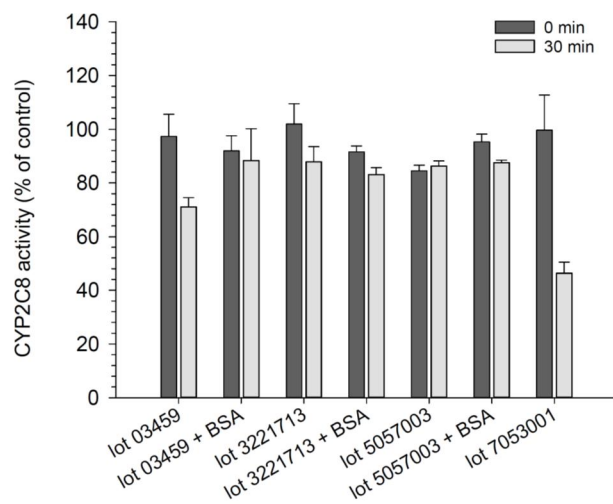


Figure 3.

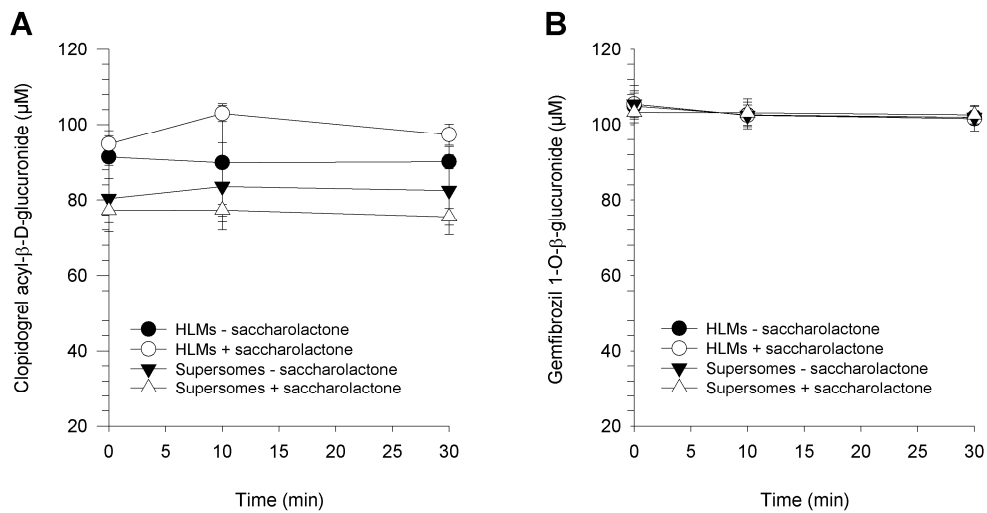


Figure 4.

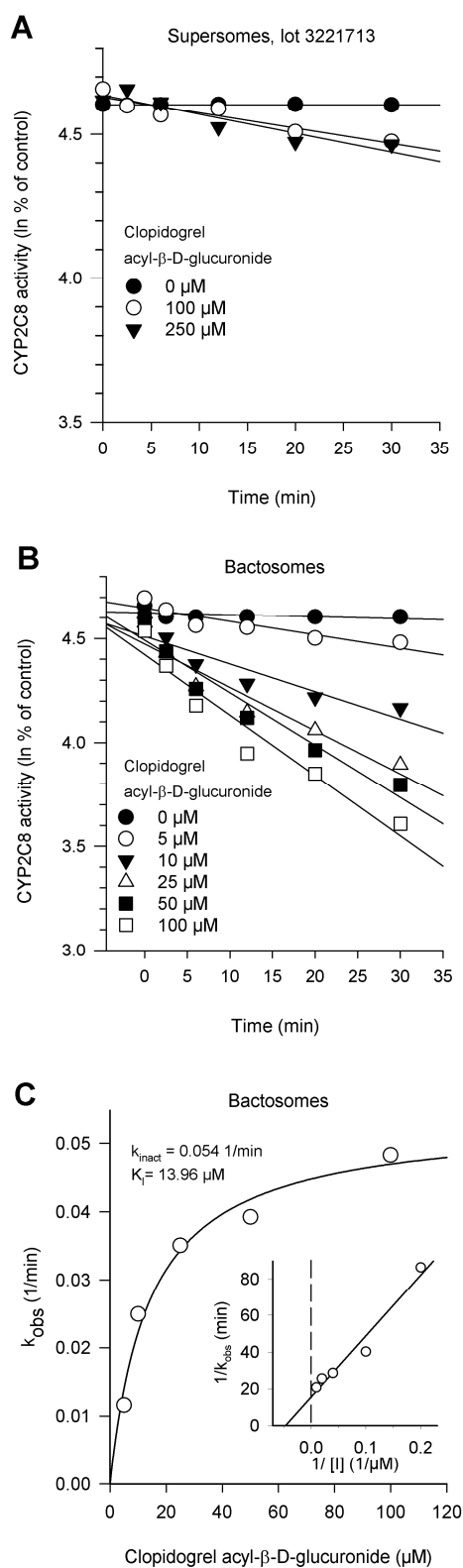


Figure 5.

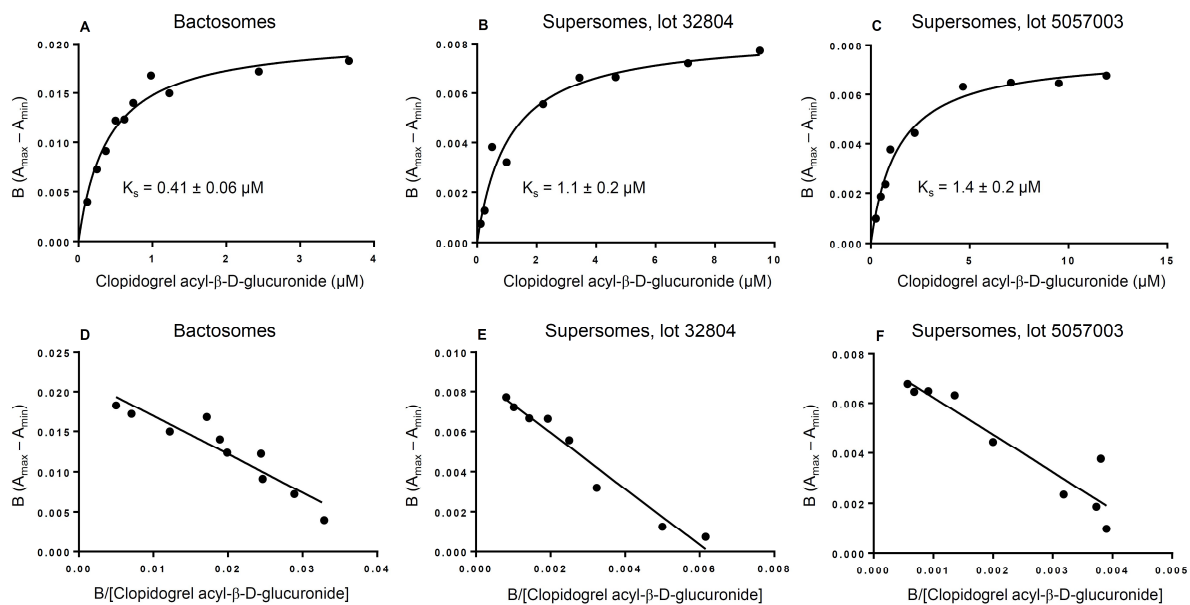


Figure 6.

Drug Metabolism and Disposition

Critical Differences between Enzyme Sources in Sensitivity to Detect Time-dependent Inactivation of CYP2C8

Helinä Kahma, Anne M. Filppula, Terhi Launiainen, Jenni Viinamäki, Mikko Neuvonen, Eric A. Evangelista, Rheem A. Totah and Janne T. Backman

Supplemental Data

Supplemental Table 1. The previously reported CYP2C8 inactivation parameters of amiodarone, clopidogrel acyl- β -D-glucuronide, gemfibrozil 1-O- β -glucuronide, phenelzine and raloxifene in human liver microsomes (HLMs) and human recombinant CYP2C8 preparations.

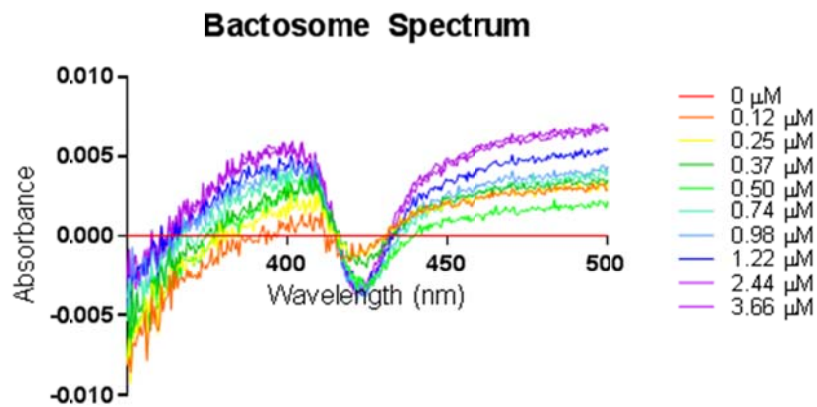
| CYP2C8 inhibitor | Substrate | HLMs | E. coli expressed CYPs | Supersomes | Reference |
|--|------------------|--|--|-------------------|-----------------------------------|
| Amiodarone | Paclitaxel | K_i : 51.2 μ M k_{inact} : 0.029 min^{-1} | K_i : 1.5 μ M k_{inact} : 0.079 min^{-1} | | Polasek <i>et al.</i> 2004 |
| Clopidogrel acyl- β -D-glucuronide | Amodiaquine | K_i : 9.9 μ M k_{inact} : 0.047 min^{-1} | | | Tornio <i>et al.</i> 2014 |
| Gemfibrozil 1-O- β -glucuronide | Amodiaquine | | K_i : 29 μ M k_{inact} : 0.072 min^{-1} | | Baer <i>et al.</i> 2009 |
| | Amodiaquine | K_i : 0.26 μ M k_{inact} : 0.015 min^{-1} | | | Teng <i>et al.</i> 2010 |
| | Amodiaquine | K_i : 10.1 μ M k_{inact} : 0.041 min^{-1} | | | VandenBrink <i>et al.</i> 2011 |
| | Amodiaquine | K_i : 10.34-25.4 μ M k_{inact} : 0.104-0.25 min^{-1} | | | Korzekwa <i>et al.</i> 2014 |
| | Montelukast | K_i : 21.3 μ M k_{inact} : 0.05 min^{-1} | | | VandenBrink <i>et al.</i> 2011 |

| CYP2C8 inhibitor | Substrate | HLMs | E. coli expressed CYPs | Supersomes | Reference |
|---------------------------------------|------------------|--|--|---|--------------------------------|
| Gemfibrozil 1-O- β -glucuronide | Paclitaxel | K_I : 20-52 μ M k_{inact} : 0.041 min^{-1} | | | Ogilvie <i>et al.</i> 2006 |
| | Paclitaxel | K_I : 35 μ M k_{inact} : 0.022 min^{-1} | | | VandenBrink <i>et al.</i> 2011 |
| | Pioglitazone | K_I : 33.6 μ M k_{inact} : 0.082 min^{-1} | | | VandenBrink <i>et al.</i> 2011 |
| | Repaglinide | K_I : 18.4 μ M k_{inact} : 0.035 min^{-1} | | | VandenBrink <i>et al.</i> 2011 |
| Phenelzine | Paclitaxel | K_I : 54.3 μ M k_{inact} : 0.17 min^{-1} | K_I : 1.2 μ M k_{inact} : 0.243 min^{-1} | | Polasek <i>et al.</i> 2004 |
| Raloxifene | Paclitaxel | | | K_I : 0.26 μ M k_{inact} : 0.1 min^{-1} | VandenBrink <i>et al.</i> 2012 |

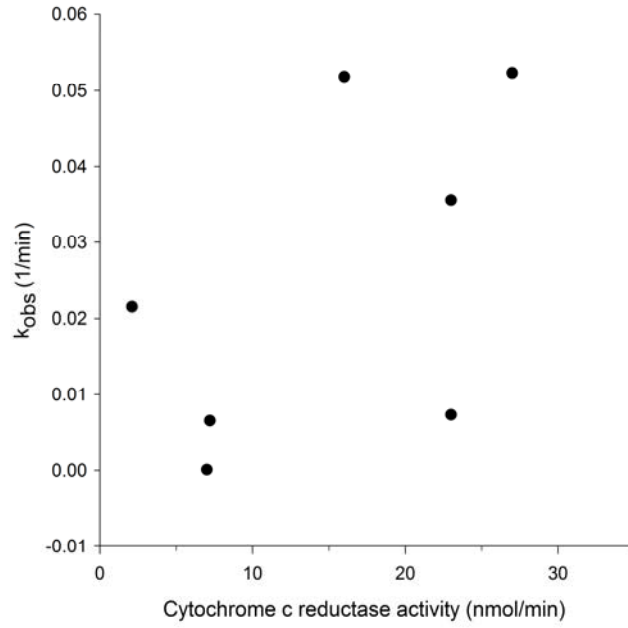
Supplemental Table 2. Examples of reported differences in CYP inactivation parameters between enzyme sources.

| | Substrate | HLMs | <i>E. coli</i> expressed CYPs | Supersomes | Bactosomes | Yeast microsomes | Reference |
|--------------------------|------------------|---|--|-------------------|-------------------|-----------------------------|-------------------------------|
| CYP2C8 inhibitors | | | | | | | |
| Amiodarone | Paclitaxel | K_I : 51.2 μM k_{inact} : 0.029 min^{-1} | K_I : 1.5 μM k_{inact} : 0.079 min^{-1} | | | | Polasek <i>et al.</i> 2004 |
| Fluoxetine | Paclitaxel | K_I : could not be determined k_{inact} : could not be determined | K_I : 294 μM k_{inact} : 0.083 min^{-1} | | | | Polasek <i>et al.</i> 2004 |
| Isoniazid | Paclitaxel | K_I : 170 μM k_{inact} : 0.012 min^{-1} | K_I : 374 μM k_{inact} : 0.042 min^{-1} | | | | Polasek <i>et al.</i> 2004 |
| Nortriptyline | Paclitaxel | K_I : could not be determined k_{inact} : could not be determined | K_I : 49.9 μM k_{inact} : 0.036 min^{-1} | | | | Polasek <i>et al.</i> 2004 |
| Phenelzine | Paclitaxel | K_I : 54.3 μM k_{inact} : 0.17 min^{-1} | K_I : 1.2 μM k_{inact} : 0.243 min^{-1} | | | | Polasek <i>et al.</i> 2004 |
| Verapamil | Paclitaxel | K_I : could not be determined k_{inact} : could not be determined | K_I : 17.5 μM k_{inact} : 0.065 min^{-1} | | | | Polasek <i>et al.</i> 2004 |

| | Substrate | HLMs | <i>E. coli</i> expressed CYPs | Supersomes | Bactosomes | Yeast microsomes | Reference |
|---------------------------|---------------|-----------------|--|--|---|--|-------------------------------|
| CYP2C19 inhibitors | | | | | | | |
| | Nortriptyline | (S)-Mephenytoin | K _I : could not be determined k _{inact} : could not be determined | K _I : 4 μM k _{inact} : 0.19 min ⁻¹ | | | Polasek <i>et al.</i> 2008 |
| CYP2D6 inhibitors | | | | | | | |
| | Cimetidine | Dextrometorphan | K _I : could not be determined k _{inact} : could not be determined | K _I : 77 μM k _{inact} : 0.03 min ⁻¹ | | | Madeira <i>et al.</i> 2004 |
| | MDMA | Dextrometorphan | | K _I : 3.7 μM k _{inact} : 0.38 min ⁻¹ | K _I : 43 μM k _{inact} : 0.95 min ⁻¹ | K _I : 2.9 μM k _{inact} : 0.28 min ⁻¹ | Van <i>et al.</i> 2007 |
| CYP3A4 inhibitors | | | | | | | |
| | Nortriptyline | Testosterone | K _I : could not be determined k _{inact} : could not be determined | K _I : 70 μM k _{inact} : 0.06 min ⁻¹ | | | Polasek <i>et al.</i> 2008 |
| | Tamoxifen | Testosterone | K _I : could not be determined k _{inact} : 0.10 min ⁻¹ | K _I : 0.2 μM k _{inact} : 0.04 min ⁻¹ | | | Zhao <i>et al.</i> 2002 |



Supplemental Figure 1. Representative absorbance spectrum of clopidogrel acyl- β -glucuronide binding to CYP2C8 Bactosomes. Absorbance decreases at 422 nm and absorbance increases at 405 nm were observed as concentrations of clopidogrel acyl- β -glucuronide were increased.



Supplemental Figure 2. The relation of the initial inactivation rate constant (k_{obs}) to cytochrome c reductase activity in different human recombinant CYP2C8 preparations and pooled human liver microsomes.

Supplemental References

Baer BR, DeLisle RK, and Allen A (2009) Benzylic oxidation of gemfibrozil-1-O-beta-glucuronide by P450 2C8 leads to heme alkylation and irreversible inhibition. *Chem Res Toxicol* **22**: 1298-309.

Korzekwa K, Tweedie D, Argikar UA, Witcher-Johnstone A, Bell L, Bickford S, and Nagar S (2014) A numerical method for analysis of in vitro time-dependent inhibition data. Part 2. Application to experimental data. *Drug Metab Dispos* **42**:1587-95.

Madeira M, Levine M, Chang TK, Mirfazaelian A, and Bellward GD (2004) The effect of cimetidine on dextromethorphan O-demethylase activity of human liver microsomes and recombinant CYP2D6. *Drug Metab Dispos* **32**: 460-467.

Ogilvie BW, Zhang D, Li W, Rodrigues AD, Gipson AE, Holsapple J, Toren P, and Parkinson A (2006) Glucuronidation converts gemfibrozil to a potent, metabolism-dependent inhibitor of CYP2C8: implications for drug-drug interactions. *Drug Metab Dispos* **34**: 191-7.

Polasek TM, Elliot DJ, Lewis BC, and Miners JO (2004) Mechanism-based inactivation of human cytochrome P4502C8 by drugs in vitro. *J Pharmacol Exp Ther* **311**: 996-1007.

Polasek TM and Miners JO (2008) Time-dependent inhibition of human drug metabolizing cytochromes P450 by tricyclic antidepressants. *Br J Clin Pharmacol* **65**: 87-97.

Teng WC, Oh JW, New LS, Wahlin MD, Nelson SD, Ho HK and Chan EC (2010) Mechanism-based inactivation of cytochrome P450 3A4 by lapatinib. *Mol Pharmacol* **78**: 693-703.

Tornio A, Filppula AM, Kailari O, Neuvonen M, Nyrönen TH, Tapaninen T, Neuvonen PJ, Niemi M, Backman JT. (2014). Glucuronidation Converts Clopidogrel to a Strong Time-Dependent Inhibitor of CYP2C8: A Phase II Metabolite as a Perpetrator of Drug-Drug Interactions. *Clin Pharmacol Ther* **96**: 498-507.

Van LM, Hargreaves JA, Lennard MS, Tucker GT, and Rostami-Hodjegan A (2007) Inactivation of CYP2D6 by methylenedioxymethamphetamine in different recombinant expression systems. *Eur J Pharm Sci* **32**: 8-16.

VandenBrink BM, Foti RS, Rock DA, Wienkers LC, and Wahlstrom JL (2011) Evaluation of CYP2C8 Inhibition in Vitro: Utility of Montelukast as a Selective CYP2C8 Probe Substrate. *Drug Metab Dispos* **39**: 1546-54.

VandenBrink BM, Davis JA, Pearson JT, Foti RS, Wienkers LC, and Rock DA (2012) Cytochrome P450 architecture and cysteine nucleophile placement impact raloxifene-mediated mechanism-based inactivation. *Mol Pharmacol* **82**: 835-42.

Zhao XJ, Jones DR, Wang YH, Grimm SW, and Hall SD (2002) Reversible and irreversible inhibition of CYP3A enzymes by tamoxifen and metabolites. *Xenobiotica* **32**: 863-878.