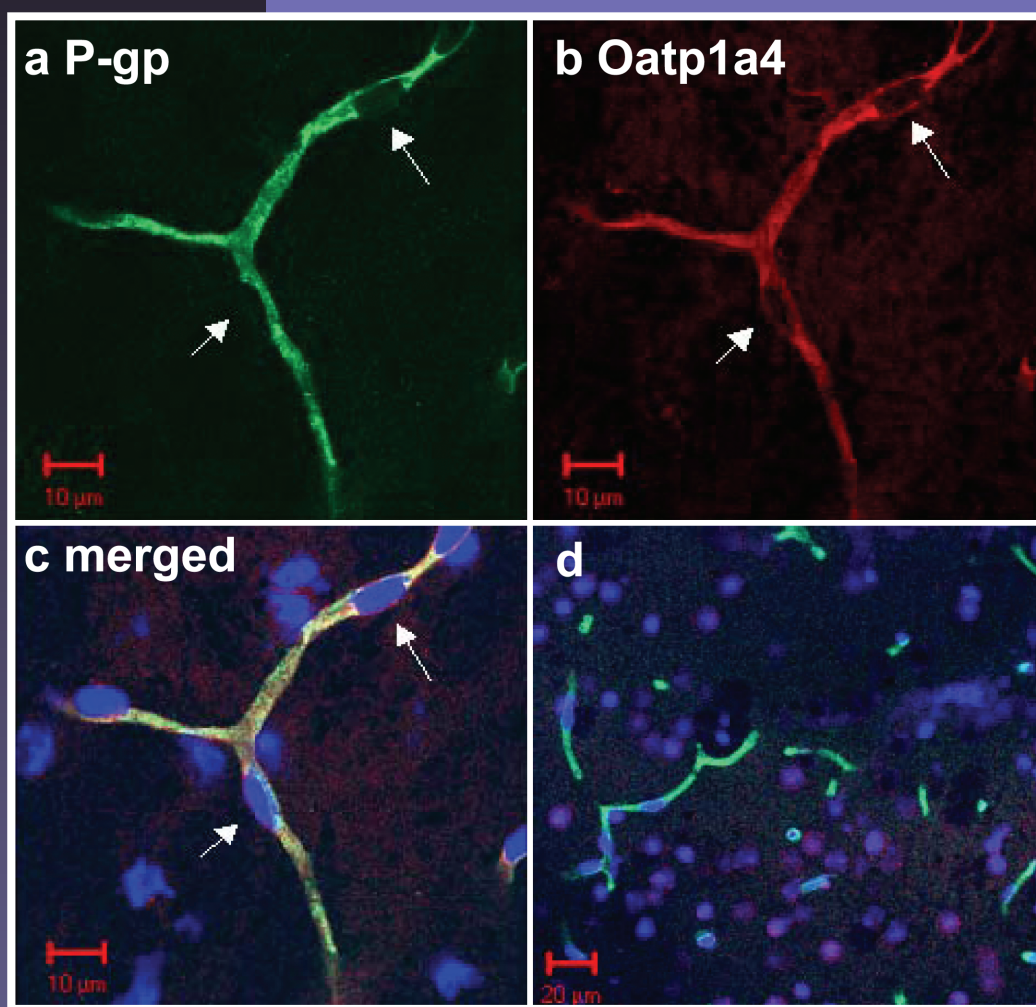


DRUG METABOLISM *AND* DISPOSITION



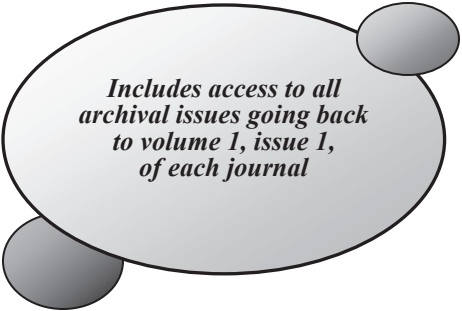
**A Publication of the
American Society for Pharmacology
and Experimental Therapeutics**

ASPET Membership

The Benefits Add Up!

ASPET Membership Includes Online Access to:

Journal of Pharmacology and Experimental Therapeutics
Pharmacological Reviews
Molecular Pharmacology
Drug Metabolism and Disposition
Molecular Interventions (print subscription also included)



*Includes access to all
archival issues going back
to volume 1, issue 1,
of each journal*



*The savings
from one article
pay for a year's
dues*

Members Save 50% on Page Charges and Color Fees

\$40/page for members versus \$80 for nonmembers
\$200/figure for members versus \$400 for nonmembers
Includes *JPET*, *Molecular Pharmacology*, and *DMD*

Reduced Registration Fees for ASPET Meetings — *Including Experimental Biology*

**Public Affairs Advocacy for Increased Research Funding and Science Policy
Favorable to Biomedical Research** — *Public policy reports provided regularly*

Personal print subscriptions are available only to ASPET Members:

Journal of Pharmacology and Experimental Therapeutics - \$220
Pharmacological Reviews - \$89
Drug Metabolism and Disposition - \$137
Molecular Pharmacology - \$180



*For ASPET
Members
Only!*

**Apply for membership online at
www.aspet.org**



visit www.simcyp.com for further information or to register for our workshops

A sample quote by a previous attendee:

"This course underscores and validates the utility of predicting PK variability and DDIs based on *in vitro* data generated with human derived systems – it is a tour de force!"

Andrew Parkinson CEO,
XenoTech

INTENSIVE INTERACTIVE WORKSHOPS

Concepts and applications of population-based
in vitro-in vivo extrapolation of ADME properties

LONDON, UK
Holiday Inn - Kensington Forum
19th - 23rd April 2010

PRINCETON, NEW JERSEY, USA
Nassau Inn
17th - 21st May 2010

SHEFFIELD, UK
Mercure St Pauls
September 2010



Simcyp workshops are an ideal way to enhance the continuous education of your staff. This is an excellent opportunity to develop skills in the prediction of pharmacokinetics, stay up-to-date with the latest scientific advances in the optimal use of *in vitro* assays and network with delegates from industry, academia and regulatory agencies.

The workshops are uniquely designed with a focus on the concepts and applications of IVIVE, but participants also have the opportunity to use the Simcyp ADME Simulator as a platform for automation. More advanced Simcyp Simulator users will be able to discuss specific aspects of Simcyp algorithms with our expert tutors.

Check the website for dates. Discounts are available for early registration and package bookings. To register your interest in these events please contact Kelly Jinkinson k.jinkinson@simcyp.com

Past, present and future workshops held internationally, locations include:



These workshops cover basic aspects of clinical trial simulations using physiologically based pharmacokinetics. They provide details of *in vitro* – *in vivo* extrapolation (IVIVE) techniques in the prediction of absorption, distribution, clearance and drug-drug interactions using a population based approach to identify the key covariates of PK in different ethnic groups, paediatric patients and various diseases.

All course material is set within a context **relevant to drug discovery and development**. All courses involve **computer-based hands-on problem solving sessions**.

Due to previous worldwide success and high demand for these interactive workshops, we recommend early booking.