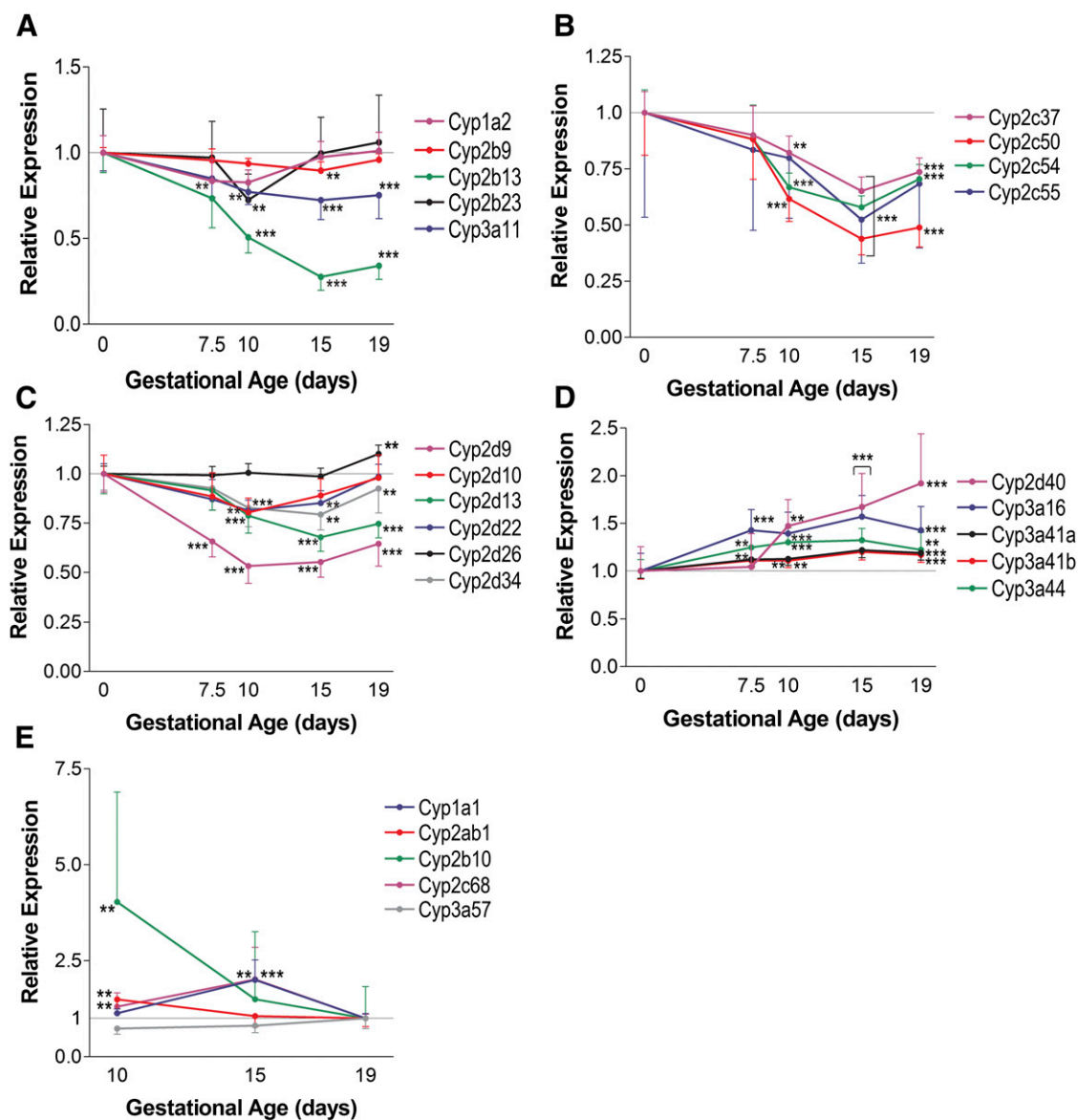


## Correction to “Gestational Age-Dependent Changes in Gene Expression of Metabolic Enzymes and Transporters in Pregnant Mice”

In the article referenced above [Shuster DL, Bammler TK, Beyer RP, MacDonald JW, Tsai JM, Farin FM, Hebert MF, Thummel KE, and Mao Q (2013) *Drug Metab Dispos* **41**:332–342], the last character of every label in Fig. 4D was shifted down during publication, leaving the labels incorrect. The revised Fig. 4 is provided below. This error was solely in the figure label.

The online versions have been corrected.

The printer regrets this error and apologizes for any inconvenience it may have caused.



**Fig. 4.** Gestational age-dependent trends in cytochrome P450 gene expression in the maternal liver and placenta. Shown are expression means  $\pm$  S.E. for selected genes in the liver (A–D) and placenta (E) from five animals. All panels are expressed as relative fold changes compared with gd 0 (liver) or gd 19 (placenta). Data points in brackets share the same statistical significance. \*\* Unadjusted  $P$  value < 0.01; \*\*\*Unadjusted  $P$  value < 0.001.