

Perspective

Evaluation of a New Molecular Entity as a Victim of Metabolic Drug-Drug Interactions—an Industry Perspective[□]

Tonika Bohnert, Aarti Patel, Ian Templeton, Yuan Chen, Chuang Lu, George Lai, Louis Leung, Susanna Tse, Heidi J Einolf, Ying-Hong Wang, Michael Sinz, Ralph Stearns, Robert Walsky, Wanping Geng, Sirimas Sudsakorn, David Moore, Ling He, Jan Wahlstrom, Jim Keirns, Rangaraj Narayanan, Dieter Lang, and Xiaoqing Yang; International Consortium for Innovation and Quality in Pharmaceutical Development (IQ) Victim Drug-Drug Interactions Working Group

Biogen, Cambridge, Massachusetts (T.B.); GlaxoSmithKline R&D, Hertfordshire, United Kingdom (A.P.); Janssen R&D, Spring House, Pennsylvania (I.T.); Genentech, South San Francisco, California (Y.C.); Takeda, Cambridge, Massachusetts (C.L.); Eisai Inc., Andover, Massachusetts (G.L.); Pfizer Inc., Groton, Connecticut (L.L., S.T.); Novartis, East Hanover, New Jersey (H.J.E.); Merck & Co., Inc., Kenilworth, New Jersey (Y.-H.W.); Bristol Myers Squibb, Wallingford, Connecticut (M.S.); Vertex Pharmaceuticals Inc., Boston, Massachusetts (R.S.); EMD Serono R&D Institute, Inc., Billerica, Massachusetts (R.W., W.G.); Sanofi, Waltham, Massachusetts (S.S.); Roche Innovation Center, New York, New York (D.M.); Daiichi Sankyo, Edison, New Jersey (L.H.); Amgen Inc., Thousand Oaks, California (J.W.); Astellas, Northbrook, Illinois (J.K.); Celgene Corporation, Summit, New Jersey (R.N.); Bayer Pharma AG, Wuppertal, Germany (D.L.); and Incyte Corporation, Wilmington, Delaware (X.Y.)

Received December 18, 2015; accepted March 31, 2016

ABSTRACT

Under the guidance of the International Consortium for Innovation and Quality in Pharmaceutical Development (IQ), scientists from 20 pharmaceutical companies formed a Victim Drug-Drug Interactions Working Group. This working group has conducted a review of the literature and the practices of each company on the approaches to clearance pathway identification (f_{CL}), estimation of fractional contribution of metabolizing enzyme toward metabolism (f_m), along with modeling and simulation-aided strategy in predicting the victim drug-drug interaction (DDI) liability due to modulation of drug metabolizing enzymes. Presented in this perspective are the recommendations from this working group on: 1) strategic and experimental approaches to identify f_{CL} and f_m ; 2) whether those assessments may be quantitative for

certain enzymes (e.g., cytochrome P450, P450, and limited uridine diphosphoglucuronosyltransferase, UGT enzymes) or qualitative (for most of other drug metabolism enzymes), and the impact due to the lack of quantitative information on the latter. Multiple decision trees are presented with stepwise approaches to identify specific enzymes that are involved in the metabolism of a given drug and to aid the prediction and risk assessment of drug as a victim in DDI. Modeling and simulation approaches are also discussed to better predict DDI risk in humans. Variability and parameter sensitivity analysis were emphasized when applying modeling and simulation to capture the differences within the population used and to characterize the parameters that have the most influence on the prediction outcome.

Introduction

Metabolism-based drug-drug interactions (DDI) remain a safety concern, as observed by the number of drugs that have been withdrawn from the market due to severe toxicities arising from metabolic DDIs

(<http://www.fda.gov/Drugs/DrugSafety/DrugRecalls/default.htm>). It is therefore extremely important to assess and avoid, if possible, the potential of a drug to cause or be affected by such DDIs. Regulatory agencies such as the US Food and Drug Administration (FDA) and European Medicines Agency (EMA) require that potential drug interaction risks be investigated before large scale clinical trials are conducted. During the assessment of metabolism-based DDIs, new molecular entities (NME) are classified as *perpetrators*, drugs (inhibitor/inducer) that alter the metabolic clearance of

dx.doi.org/10.1124/dmd.115.069096.

[□]This article has supplemental material available at dmd.aspetjournals.org.

ABBREVIATIONS: ADME, absorption distribution metabolism excretion; AMS, accelerator mass spectrometry; AO, aldehyde oxidase; AUC, area under curve; BDC, bile duct cannulated; CES, carboxylesterase; CL, clearance; CL_{int} , intrinsic clearance; DDI, drug-drug interactions; DME, drug metabolizing enzyme; EMA, European Medicines Agency; f_{CL} , fraction of clearance; FDA, US Food and Drug Administration; F_G , fraction escaping gut metabolism; FIH, first in human; f_m , fraction metabolized; FMO, flavin-containing monooxygenase; f_u , fraction unbound; $f_{u,gut}$, fraction unbound enterocytes; GSH, glutathione; HLM, human liver microsomes; IQ, International Consortium for Innovation and Quality in Pharmaceutical Development; ISEF, intersystem extrapolation factor; IVIVC, in vitro-in vivo correlation; K_m , substrate concentration at which the reaction rate is half of maximal velocity; LC/MS, liquid chromatography-mass spectrometry; MAO, monoamine oxidase; MAD, multiple ascending dose; NADPH, nicotinamide adenine dinucleotide phosphate reduced; NAT, *N*-acetyl transferase; NME, new molecular entity; PBPK, physiologically based pharmacokinetic; P450, cytochrome P450; PK, pharmacokinetics; PM, poor metabolizer; RAF, relative activity factor; rh, recombinant CYP; SAD, single ascending dose; SULT, sulfotransferase; UGT, uridine diphosphoglucuronosyltransferase; UV, ultraviolet; V_{dss} , steady, state volume of distribution; V_{max} , maximum reaction velocity; XO, xanthine oxidase.

another coadministered drug, and *victims*, coadministered drugs whose metabolic clearance is affected.

In 2003, the Pharmaceutical Research and Manufacturers of America consortium published a comprehensive DDI manuscript, which provided best practices for the conduct of in vitro and clinical DDI studies required for registration dossiers of drugs in clinical development (Bjornsson et al., 2003). The manuscript described technical and strategic aspects of experimental assays pertaining to both perpetrator and victim DDI assessment, with a focus on cytochrome P450 (P450)-mediated DDIs. The current working group comprised of pharmaceutical company members of the International Consortium for Innovation and Quality in Pharmaceutical Development (IQ) was formed with a similar intent but with the focus to expand on the solid foundation of the earlier manuscript with regard to *victim* DDI risk assessment. Every NME has the potential to be a victim of some DDI (drug-drug, genetic polymorphism, food-drug, disease-drug interactions), because it has to be cleared by a certain pathway. Unlike the liability of a perpetrator drug that can potentially be dialed out before final clinical candidate nomination via structural modifications, victim drug liability can at best be managed by thorough assessment of a NME's clearance pathway and identifying those that will be most sensitive to modulation. Additionally, definitive clinical studies to confirm the victim DDI risk of a NME are usually not done until later stages (post proof of concept clinical studies) of development. However, early evaluation of victim DDI risk of a NME is deemed crucial and is a routine practice among companies as part of the drug development paradigm. Therefore, a manuscript outlining holistic strategies dedicated to victim DDI risk assessment of NMEs, through various stages of preclinical to clinical development, was merited.

Drug metabolizing enzymes (DME) and transporters have both emerged to play a prominent role in clearance of NMEs, and modulation of either of these can result in exposure change of a victim NME. Because of the expansive scope of both DMEs and transporters in drug disposition and to avoid duplication of efforts by other transporter-focused working groups (Hillgren et al., 2013; Tweedie et al., 2013), the current working group's focus was on metabolism-based victim DDI assessment only. Researchers are also encouraged to read comprehensive recent publications on victim DDIs resulting from modulation of transporters (Lai and Hsiao, 2014; Nakanishi and Tamai, 2015). Other topics not within the scope of this manuscript but comprehensively covered in recent publications include evaluation of NMEs as perpetrators of DDIs (Zhao et al., 2014; Varma et al., 2015) and assessment of performance of static and dynamic models commonly used for successful prediction of clinical DDIs (Vieira et al., 2014).

This manuscript will summarize the commonly adopted industry practices, which include in vitro methods, in combination with in vivo preclinical and clinical studies, along with modeling and simulation, to best estimate the potential of a NME to be a *victim* of P450 and non-P450-mediated metabolic DDIs in the clinic. The compilation of non-P450 enzymes discussed here is not an exhaustive list of reported non-P450 enzymes, rather a list of non-P450 enzymes that are commonly evaluated and have been encountered in recent years by working group member companies during assessment of NME metabolism. The intent of the manuscript is not to define the timing or stage of drug development when certain studies need to be conducted but to recommend what studies may provide the best estimate of the experimentally determined parameters viewed as the key elements of a victim DDI liability. Challenges commonly encountered in the estimation of the key parameters, including limitations in evaluating non-P450 mediated metabolic DDIs, will be discussed. Application of modeling and simulation via case studies to highlight the importance and the impact of victim DDI input parameters on clinical DDI study design and

outcome as well as strategies for managing uncertainties in key parameters will be presented.

A substantial amount of detailed information on RAF/ISEF scaling method for the P450 and IVIVC of overall clearance prediction via UGT and AO/XO enzymes that the working group compiled during their review has been intentionally placed in the Supplemental Material. Including such compiled up-to-date information in Supplemental Material is deemed advantageous to maintain optimum length of main manuscript, while providing such useful information to interested readers without having to do exhaustive literature search. Analysis of optimization of experimental assay conditions required for P450 and non-P450 enzymatic reactions were also not the intent of this manuscript, and key references have been provided for interested readers in appropriate sections of the main text. This working group of pharmaceutical companies acknowledges the need for such a comprehensive manuscript that summarizes universal strategies and currently available tools that are routinely used to guide decision-making through various stages of preclinical and clinical development, encompassing both P450 and non-P450 mediated metabolic victim DDI risk potential of NMEs.

Metabolic victim DDIs discussed in this manuscript represent pharmacokinetic DDIs, resulting in exposure change of the victim drug. Because of complex underlying mechanisms for pharmacodynamic drug-drug interactions (e.g., synergistic, additive, or antagonistic effect of coadministered drugs on a target receptor), this manuscript does not attempt to address these types of interactions. It is worthwhile to note that in cases where a drug forms pharmacologically active metabolites (e.g., acebutolol, alprenolol, diltiazem; carbamazepine, valproic acid, diazepam, fluoxetine), pharmacokinetic change in exposure of parent drug may not reflect parallel change in overall pharmacodynamic response.

A victim drug's metabolic clearance and exposure may undergo significant fluctuation due to modulation of the DME primarily responsible for its clearance. Modulation of a DME can result from either inhibition and/or induction of its enzyme activity in the presence of a coadministered drug in certain disease states (Cheng and Morgan, 2001; Harvey and Morgan, 2014; Jiang et al., 2016) or due to inherent variability associated with the abundance or polymorphic nature of the DMEs [e.g., CYP2D6, *N*-acetyltransferase1 (NAT1), UDP-glucuronosyltransferase (UGT)1A1]. Several representative examples are presented in Supplemental Table 1S. For instance, a drug primarily metabolized by a polymorphic DME is more susceptible to substantial exposure change in poor metabolizers (PMs) in the presence of inhibitors of a minor non-polymorphic pathway (Collins et al., 2006).

To accurately assess the magnitude of exposure change of a victim NME due to modulation of its metabolic clearance it is important to understand the role of metabolism toward the victim NME's overall clearance and contribution of a DME(s) to its overall metabolic clearance. These parameters are represented by the terms f_{CL} and f_m throughout this manuscript. The term f_{CL} is defined as the *fraction of drug cleared by a pathway* representing its *route of clearance*, where $f_{CL,metabolism}$ represents the fraction of drug cleared through metabolism, $f_{CL,renal}$ represents the fraction of drug cleared *unchanged* renally, and $f_{CL,biliary}$ refers to the fraction of drug cleared *unchanged* via biliary excretion. For any drug, systemic clearance is the sum of metabolism, renal excretion, and hepatic uptake by transporters followed by metabolism and/or subsequent excretion into bile (and then feces): $f_{CL,metabolism} + f_{CL,renal} + f_{CL,biliary} = 1$. Some drugs may also be cleared via intestinal secretion but it is often not possible to distinguish this from biliary clearance. The term f_m is defined as the *fraction of drug metabolized by an enzyme*. To illustrate, a drug that is metabolically

cleared primarily by CYP3A4, CYP2C9, and UGT2B7 can be illustrated as: $f_{m,CYP3A4} + f_{m,CYP2C9} + f_{m,UGT2B7} = f_{CL, \text{metabolism}}$, where sum total of fractional metabolism via each of these enzymes is equal to the total fraction of a NME cleared by metabolism.

The parameters $f_{CL, \text{metabolism}}$ and f_m are considered key for a victim DDI risk assessment, because the sensitivity/dependency of the AUC ratio for a victim NME significantly depends on $f_{CL, \text{metabolism}} \times f_m$ (Zhang et al., 2007). It is widely recognized that when $f_{CL, \text{metabolism}}$ and/or f_m attain higher values such that $f_{CL, \text{metabolism}} \times f_m \geq 0.5$, the victim drug AUC ratio is predicted to be ≥ 2 and increases with f_m exponentially. The predicted AUC ratio of a victim drug also increases sharply with increasing potency and concentration of the inhibitor (e.g., $[I]/K_i = 5, 10, 20, 50, 100$), especially when $f_{CL, \text{metabolism}} \times f_m > 0.8$. In the absence of well-defined clinical safety margins and for compounds with narrow therapeutic indices, when the NME is cleared by a single metabolic pathway, impairment of that pathway can result in a potentially undesirable adverse outcome, especially when the value of $f_{CL, \text{metabolism}} \times f_m$ of the NME ≥ 0.5 . Most definitive human studies to quantitatively determine $f_{CL, \text{metabolism}}$ and f_m are not conducted until later stages of clinical development (e.g., post-proof of concept, mostly Phase II or Phase III). It is therefore necessary to obtain best estimates of $f_{CL, \text{metabolism}}$ and f_m early on to allow investigators to ensure the safe conduct of Phase I and Phase II studies with consideration of certain clinical exclusion criteria. Clinical exclusion criteria to mitigate victim DDI risk in Phase I/first in human (FIH) studies are especially important in cases where FIH studies are conducted in patients compared with healthy volunteers (who are not on any medications) and in Phase II in patients who are taking concomitant medications.

Metabolism continues to be the predominant route of clearance of small molecule NMEs as experienced by pharmaceutical companies. This is also confirmed via assessment of clearance information of NMEs approved over the years between 2010 and 2014, as available from New Drug Applications, which reveal that metabolism accounted for at least 25% of total clearance (Fig. 1) for >80% of the 95 approved NMEs (assessment included NMEs administered via oral, intravenous, or inhalation route and excluded imaging agents, enzyme replacement therapies, sclerosing agents, and topical applications). Of the drugs that were primarily cleared by metabolism, P450s were involved in the metabolism of approximately 75% of the NMEs approved during 2010–2014 (Fig. 1), supporting the current view of a potentially higher risk of P450-mediated victim DDI compared with other non-P450 enzymes. Hence, it is routine practice among pharmaceutical companies to start preliminary assessment of overall role of metabolism and understand DMEs involved in a NME's clearance, starting in the preclinical stages of drug development. This is commonly done via evaluation of: 1) in vitro f_m in human-derived matrices to understand whether one or multiple P450 or non-P450 enzymes are involved in a NME's metabolism and 2) in vivo f_{CL} information in preclinical species and whether in vitro- in vivo correlation (IVIVC) holds in preclinical species to gain qualitative understanding of whether metabolism or biliary or renal excretion is predominant. The combined information obtained is used as an early guide to evaluate victim DDI risk in the clinic using various predictive models (Vieira et al., 2014). Once the $f_{CL, \text{metabolism}}$ is available from human ^{14}C -ADME study and $f_{m, \text{enzyme}}$ is quantitatively available from a clinical DDI study (or PK study in genotyped population), the victim DDI predictions are further refined to predict additional and/or potentially complex DDIs before the NME being administered in larger clinical trials (Lu et al., 2014). The next two sections will focus on discussing how companies rely on currently available in vitro assays and in vivo data to best estimate f_m and $f_{CL, \text{metabolism}}$ along with some of the pitfalls encountered through various stages of drug development.

In Vitro Determination of the Enzymes Involved in Metabolizing of a NME and Their Relative Contribution $F_{m, \text{Enzyme}}$

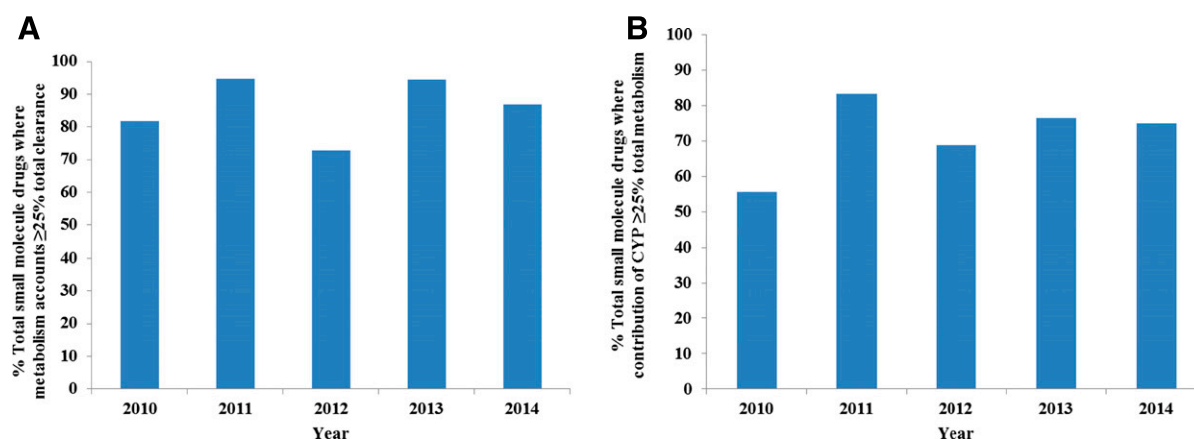
Quantitative determination of f_m in the clinic is obtained with studies conducted either: 1) in a genotyped population where f_m can be estimated from the change in exposure of a victim drug in extensive metabolizers compared with poor metabolizers (Ito et al., 2005) or 2) with selective inhibitors of a metabolizing enzyme (responsible for the primary metabolic pathway of victim drug) (Shou et al., 2008):

$$f_m = 1 - \frac{\text{AUC}_{\text{no inhibitor or AUC}_{\text{extensive metabolizer}}}{\text{AUC}_{\text{with inhibitor or AUC}_{\text{poor metabolizer}}}} \quad (1)$$

Before such definitive clinical studies are conducted, reliance on in vitro methods to estimate f_m is common during early stages of development. "Enzyme mapping" is commonly the first step conducted to identify DMEs involved in the major metabolic pathways of a NME. The second step often referred to as "reaction phenotyping" allows for the quantitative determination of the fraction metabolized (f_m) by a specific enzyme or isoform in appropriate human liver matrices. After preliminary in vitro enzyme mapping, detailed reaction phenotyping experiments are recommended when the contribution of a particular enzyme family is estimated to be $\geq 25\%$ toward overall metabolism of a NME. In the absence of quantitative information on $f_{CL, \text{metabolism}}$ from ^{14}C -ADME studies, the worst-case scenario for victim DDI risk assessment is the assumption that metabolism is responsible for 100% of the NME clearance (consistent with the current observed trend of metabolism accounting for >80% clearance of NMEs registered between 2010 and 2014). The conservative $\geq 25\%$ cutoff from in vitro studies is deemed to be a reasonable starting point to warrant further investigation of f_m . Some of the reasons behind this approach include a consideration for the experimental errors in in vitro determination of f_m due to unoptimized assay conditions, reduced enzyme activity in in vitro systems, difficulty of extrapolation of in vitro f_m to in vivo f_m , especially in cases where extrahepatic metabolizing enzymes are involved.

General Guidelines for Enzyme Reaction Phenotyping

Comprehensive metabolite profiling in complete human liver systems such as hepatocytes to capture major metabolic pathways should be obtained before conducting detailed f_m studies. Whether a NME is cleared via oxidation, reduction, hydrolysis, or direct conjugation guides the selection of metabolizing enzymes to be prioritized for phenotyping studies. After major metabolic pathways have been identified, it is recommended to determine metabolite formation kinetics over a range of NME concentrations to establish $K_{m, \text{apparent}}$ (apparent/observed Michaelis-Menten constant) value for the metabolic pathways of interest, particularly if using chemical inhibition method. Once $K_{m, \text{apparent}}$ has been established, f_m experiments are conducted maintaining NME/substrate concentration at approximately 1/10th value of $K_{m, \text{apparent}}$ to capture accurate contribution of the physiologically relevant high-affinity enzymes toward the metabolic pathway of interest. Because most of the P450 substrates have $K_{m, \text{apparent}}$ values in 1–100 μM range, 0.1–10 μM is an appropriate concentration range to investigate metabolite formation kinetics while maintaining linear first-order kinetics. Investigators are encouraged to consider nonspecific binding of a NME to microsomes (and hepatocytes) in incubation mixture. For NMEs with high nonspecific binding (as in cases of lipophilic basic drugs), although the V_{max} values are unaffected, the observed $K_{m, \text{apparent}}$ can be substantially higher than $K_{m, \text{unbound}}$ ($K_{m, \text{apparent}} = f_{\text{unbound, incubation}} * K_{m, \text{unbound}}$), which represents the true unbound/pharmacologic drug concentration at the enzyme active site and is key determinant of in vitro CL_{int} . Challenges in assay sensitivity of metabolite monitoring at such low $K_{m, \text{unbound}}$ concentration is a practical hurdle, and most in vitro



Year	Total number of NDAs ^a	Number of typical SMD ^b	Number of drugs cleared via metabolism ^c	Number of drugs cleared by CYP ^d
2010	15	11	9	5
2011	24	19	18	15
2012	33	22	16	11
2013	25	18	17	13
2014	29	23	20	15

^a NDA = New Drug Application; Assessments made on drugs cleared via intravenous, oral, or inhaled routes and excluding imaging agents, enzyme replacement therapies, sclerosing agents, and topical applications.

^b SMD = Small Molecule Drugs.

^c Contribution of metabolism towards total clearance was $\geq 25\%$ as reported or inferred from exposure changes in reported clinical DDI studies.

^d Contribution of CYP towards total metabolism was $\geq 25\%$ as reported or inferred from exposure changes in reported clinical DDI studies.

Fig. 1. (A) Percent of small molecule drugs approved between 2010 and 2014 where metabolism contributed to at least 25% of total clearance. (B) Percent of metabolically cleared small molecule drugs approved between 2010 and 2014 that had involvement of P450s in their metabolism as either the primary enzyme or one of the primary enzymes (at least 25% contribution via P450 toward overall metabolism).

experiments are conducted at approximately 1/10th value of $K_{m,apparent}$ or in cases where $K_{m,apparent}$ has not been fully characterized at three concentrations, typically 0.1, 1, and 10 μM . Generally, under optimal/low protein (e.g., microsomal) concentration (ideally 0.05–0.2 mg/ml), linear first-order kinetics are still maintained in these $K_{m,apparent}$ concentration ranges. Graphical analysis of metabolite formation kinetics (using Eadie-Hofstee or Lineweaver-Burke plots) may allow one to determine involvement of multiple enzymes and saturable high affinity pathway in some cases. Enzyme-selective inhibitor or RAF/ISEF scaling methods (Supplemental Materials) are then applied to quantitatively determine f_m for each of the major metabolic pathways tested. This overall process is best done quantitatively with radiolabeled NME or with authentic metabolite standards if they are available. During early stages of drug discovery, radiolabeled NME or metabolite standards are rarely available and reliance on identifying metabolic pathways using unlabeled NME is commonly used for decision making and early victim DDI risk assessment.

When unlabeled NME is used, “relative” contribution of metabolic pathways is estimated using either UV-absorption or LC/MS/MS methods. Underlying assumption is that either the UV-absorption (when using UV) or the ionization efficiency (in LC/MS/MS) of the metabolite(s) is similar to the parent NME. Both the assumptions warrant cautious evaluation (Dahal et al., 2011) depending on the nature of the biotransformation of the NME.

When radiolabeled NME is available, the contribution of various metabolic pathways can be quantitatively assessed when radiolabeled NME is available. Metabolites can be separated and quantified via HPLC-radiometric detection device, whereas LC/MS techniques can be used to confirm the identity of the metabolites. If several minor

metabolites are formed, the sensitivity of an inline radiochemical detector may not be sufficient to provide a quantitative measurement of all the metabolites, and a scintillation counter is often used after fraction collection from the HPLC separation. For extremely low turnover NMEs, a combined approach of radiometric detector and LC/MS/MS can be used (Yi and Luffer-Atlas, 2010)(discussed further in *Special Considerations: Low Turnover, Extrahepatic Metabolism, Inhibition of Parallel Metabolic Pathways*).

When biotransformation pathways have not been fully characterized, monitoring total parent NME disappearance is also commonly done. Enzyme-selective inhibitors or RAF/ISEF scaling methods (Supplemental Materials) are then applied to determine semiquantitatively f_m for overall NME disappearance. The parent disappearance approach is limited by the challenge to monitor accurately depletion of NME, especially when percent depletion is low with assays usually being conducted under initial rate conditions (NME depletion is maintained at $\leq 15\text{--}20\%$ to ensure metabolite formation is linear with protein concentration and incubation time). When using enzyme-selective inhibitors, at least 40% of parent NME disappearance has been reported to be desirable (Lu et al., 2008) to capture maximum sensitivity of inhibition of NME metabolism. In comparison, when using the RAF or ISEF approaches, $\sim 15\text{--}20\%$ of parent NME disappearance has been demonstrated to give acceptable results (Uttamsingh et al., 2005). These are in contrast to the level of sensitivity achieved when monitoring metabolites that can be measured at $\sim 5\%$ of parent turnover with reasonable accuracy. The parent disappearance approach provides an advantage that allows the researcher to easily monitor the total NME metabolism rather than individual metabolite-formation kinetics, which is significantly more labor intensive and usually not done until a candidate is identified for clinical development. However monitoring

NME disappearance does not yield a complete picture of metabolic pathways and enzymes involved in each of the pathways that could have important implications in victim DDI risk predictions. This can be demonstrated with an example of a NME metabolized predominantly through a major metabolic pathway, which has significant contribution from two distinct isoforms CYP3A4 and CYP2C9, each with different kinetic behaviors ($K_{mCYP2C9} = 5 \mu\text{M}$, $V_{maxCYP2C9} = 18 \text{ pmol min}^{-1} \text{ mg}^{-1}$; $K_{mCYP3A4} = 100 \mu\text{M}$, $V_{maxCYP3A4} = 170 \text{ pmol min}^{-1} \text{ mg}^{-1}$). When overall NME disappearance is monitored, the apparent observed kinetic parameters obtained for the NME will be a result of hybrid of the kinetic parameters for both isoforms. At low NME concentration (usually therapeutically relevant concentrations), contribution of the high-affinity isoform CYP2C9 will be predominant toward NME metabolism. At high NME concentration due to higher V_{max} of CYP3A4-mediated pathway, contribution of CYP3A4 will be primary. Several drugs demonstrate such biphasic kinetics (bupropion, dextromethorphan, diazepam, omeprazole, lansoprazole, voriconazole) (Griffin and Houston, 2004; Pelkonen et al., 2008) where in vivo metabolism is dominated by the high-affinity/low-capacity enzymes (e.g., 2D6 or 2C19) although in vitro, contribution of low-affinity/high-capacity enzyme (e.g., 3A4) may be predominant at high substrate concentrations. It is important to understand such mechanistic aspects in DDI risk assessment at clinically efficacious doses of a NME so as to not underestimate or miss contribution of the physiologically relevant high-affinity enzyme under supratherapeutic in vitro assay conditions. In the next few sections, summary of current tools and approaches for f_m determination of P450 and non-P450 enzymes will be provided. The approaches can be evaluated by monitoring CL_{int} of a NME via either major metabolite formation or overall NME depletion, depending on the sensitivity of assays available to investigators that imparts data interpretation with high level of confidence. Technical details of typical incubation conditions for P450- and non-P450-mediated in vitro metabolism assays are beyond the scope of this manuscript. Interested readers are referred to past reviews of this topic (Johnson and Waterman, 1996; Venkatakrishnan et al., 2001; Kramer and Tracy, 2008; Ogilvie et al., 2008; Sensenhauser, 2014; Korzekwa, 2014) and citations made throughout this document.

Early Enzyme Mapping: Identifying P450 and Non-P450 Enzymes Involved in NME Metabolism

P450 and non-P450 enzymes such as flavin-containing monooxygenase (FMO), monoamine oxidase (MAO), and aldehyde oxidase (AO)/xanthine oxidase (XO), all catalyze oxidative metabolism of xenobiotics with differential preference based on the chemical nature of their substrates. AO/XO preferentially oxidize electron-deficient carbons (Beedham, 1985; Pryde et al., 2010) compared with the P450s that prefer electron rich C-oxidations. Hence aldehyde, imine, or heteroaromatic functional groups are typical substrates of AO/XO. FMO is another NADPH-dependent oxidative enzyme like P450 enzymes but preferentially mediates *N*- and *S*- oxidations, typical peroxy acid reactions (e.g., Baeyer-Villiger oxidation) but not C-oxidation or heteroatom-dealkylations like P450 enzymes (Hines et al., 1994; Cashman, 1995; Ziegler, 2002; Harper and Brassil, 2008; Lang and Kalgutkar, 2003). MAO-mediated metabolism often occurs on compounds containing basic amine (Geha et al., 2001). Glucuronidation and sulfation commonly occurs on phenol and aliphatic alcohol groups forming *O*-glucuronides and *O*-sulfates, respectively. Glucuronidation may also occur on amines and carboxylic acids forming *N*-glucuronides and acyl glucuronides, respectively, whereas NAT has been observed to acetylate both aromatic and aliphatic amines. Carboxylesterase (CES) is usually involved in ester hydrolysis, although some amide and ketones with α -CF₃ have been reported to be substrates of CES (Wadkins et al., 2007).

Knowledge of the NME structure combined with information about major metabolic pathways (oxidation, reduction, hydrolysis, or direct conjugation) guides the nature of enzyme mapping assays. High level outlines of these studies are described in Figs. 2–4. If major metabolic pathways are identified to be phase 1 in nature then involvement of NADPH-dependent enzymes such as P450 and FMO (Fig. 3, Scheme A) and the NADPH-independent enzymes such as MAO or AO/XO (Fig. 4, Scheme B) are evaluated. When the NME undergoes direct conjugation, involvement of enzymes such as UGT, SULT, NAT, or GST is evaluated depending on the major metabolites identified. For a NME that primarily undergoes hydrolysis, enzymes such as carboxylesterases (CES) and amidases are further investigated. These studies may be conducted in conjunction with preliminary assessments in recombinant enzymes when available to identify better the enzymes responsible for major metabolic pathways. In the case of AO/XO, because commercial availability of recombinant enzymes is very limited, assessments are best made in cytosol (details in the following section of “Estimating Fractional Contribution of Aldehyde Oxidase/Xanthine Oxidase”).

Preliminary assessment of relative contribution of FMO and P450 enzymes toward *N*- or *S*- oxidation (Fig. 3) can be assessed by 1) treating HLM with a nonionic detergent (e.g., Triton X-100) or pan-P450 inhibitor (e.g., 1-aminobenzotriazole) (both of which selectively suppress the majority of P450 activities but not FMO activity); or 2) incubating HLM at 50°C for 2–3 minutes without NADPH. FMO is heat inactivated in the absence of NADPH but P450 activity is not significantly compromised. Although none of these methods is ideal (e.g., P450 and FMO activity may not be fully inhibited with 1-aminobenzotriazole and heat inactivation, respectively), results obtained from combined studies are acceptable for early estimates of the relative contribution of P450 versus FMO to then initiate detailed studies described in sections below for “Determining Fractional Metabolism by P450: P450 Reaction Phenotyping”.

Identification of NADPH-independent oxidative enzymes AO/XO and MAO is outlined in Fig. 4. Significant oxidative metabolism of a NME in human liver cytosol is indicative of metabolism by AO or XO. Inhibition of overall metabolism in cytosol by hydralazine or allopurinol would implicate AO or XO, respectively, in the metabolism of the NME. Inhibition of metabolism in the mitochondrial fraction with tranylcypromine or pargyline is indicative of MAO involvement, although if the NME does not possess a primary, secondary, or tertiary amine functional group, there is a very high probability that MAO will not be involved.

Teasing out the contribution of P450 versus non-P450 oxidative enzymes (AO/XO, FMO, and MAO) can be challenging in cases where the same oxidative metabolite may be formed via multiple enzymes (e.g., P450 and FMO, P450 and AO/XO, or P450 and MAO). Based on the reported incidence and magnitude of victim DDIs in the clinical setting (Yu et al., 2014), as well as the continued trend of P450 being the major enzyme involved in metabolic clearance, P450 stands out as the high-risk enzyme class compared with others. Careful assessment of contribution of individual P450 isoforms toward overall metabolism of a NME is therefore crucial to accurately assess the victim DDI liability of a NME in the clinic.

Strategies for f_m determination discussed for the non-P450 enzymes are based on literature reported cases or current practices within member companies. Because known cases of drugs where non-P450 enzymes are the primary metabolizing enzyme is low, experience in determination of f_m and extrapolation to in vivo outcome for non-P450 enzymes is not extensive. It is therefore recommended to thoroughly assess and optimize conditions for f_m of non-P450 enzymes when using the strategies described for the non-P450s as good starting guidelines.

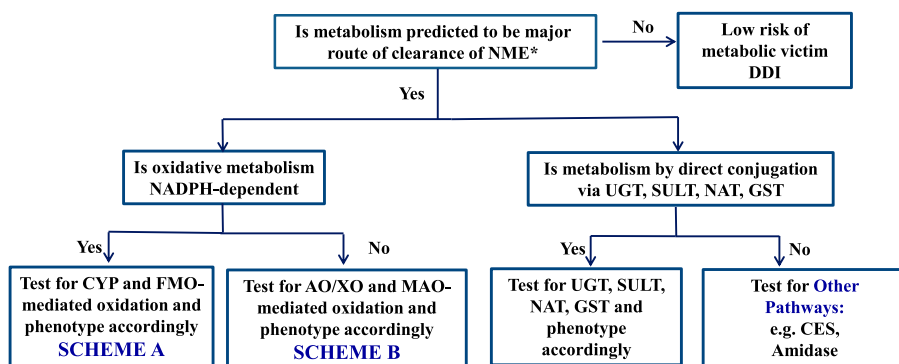


Fig. 2. Overall enzyme mapping strategy to identify class of DME involved in metabolism of NME.

*Predicted from preclinical studies or confirmed from ^{14}C -ADME human studies

NME= New Molecular Entity; DDI= Drug Drug Interaction; NADPH= Nicotinamide Adenine Dinucleotide Phosphate reduced; CYP= Cytochrome P450; FMO= Flavin-containing Monooxygenase; AO/XO= Aldehyde Oxidase/Xanthine Oxidase; MAO= Monoamine Oxidase; UGT= Uridine Diphosphoglucuronosyltransferase; SULT= Sulfotransferase; NAT= N-acetyl Transferase; GST= Glutathione S-transferase; CES= Carboxylesterase

Determining Fractional Metabolism by P450: P450 Reaction Phenotyping

Relative contributions of individual P450 enzymes to total human hepatic microsomal clearance can be assessed in vitro by some commonly used techniques (Rodrigues, 1999; Wienkers and Stevens, 2003; Zhang et al., 2007; Ogilvie et al., 2008; Korzekwa, 2014; Zientek and Youdim, 2015). 1) Recombinant P450 kinetics scaled to HLM: Commonly referred to as the RAF/ISEF method (Supplemental Materials), this involves determination of enzyme kinetic parameters for the metabolism of the NME in a panel of recombinant human (rh) P450 (with predetermined specific activity and normalized for protein content) and scaling the rhCYP intrinsic clearance (CL_{int} or V_{max}/K_m) to HLM CL_{int} via a RAF/ISEF approach. When the contributions of specific P450 enzymes are scaled to HLM CL_{int} , then the percent contribution of each P450 enzyme toward the total HLM CL_{int} can be estimated. It is not uncommon that the absolute value of the HLM CL_{int} and rhCYP-scaled HLM CL_{int} may differ. Several factors could contribute to the differences including potential involvement of enzymes other than P450 enzymes in HLM in the formation of the same metabolite(s), lack of 100% specificity of probe substrates used to calculate the scaling factors, and the potential for compound-specific (probe versus NME) differences in metabolism in HLM versus rhCYP enzymes. However, with respect to determining the relative contributions of individual P450 enzymes to the overall P450-mediated oxidative clearance in HLM, RAF/ISEF methods are deemed very useful. 2)

Chemical inhibition method: This approach involves the use of P450-isoform selective chemical inhibitors. After major metabolic pathways are identified and their kinetics evaluated, the effect of P450-isoform-specific chemical inhibitors on a particular metabolic pathway (in HLM) is assessed. Percent inhibition of a metabolic pathway by a known isoform-selective chemical inhibitor reflects contribution of the isoform toward that pathway. Ideally chemical inhibitors should be potent, selective, and metabolically stable. Sometimes the balance between potency and selectivity can be challenging to attain, because in reaction phenotyping assays the concentration of inhibitors should be such that they inhibit the desired isoform >90%. This is usually achieved at approximately 10-fold of inhibitor K_i values. However, at such high inhibitor concentrations some P450 inhibitors may demonstrate non-selectivity where slight inhibition toward other unintended P450 isoforms may exist and hence overestimate percent contribution via intended P450 pathway. A mathematical correction has been proposed using P450 probe substrates to correct for the cross reactivity and partial inhibition toward the target P450 (Lu et al., 2007), but this has not been widely qualified. Nonspecific binding of chemical inhibitors ($f_{\text{u,incubation}}$) also needs to be carefully evaluated (Waters et al., 2014), especially in cases where phenotyping studies are conducted at high microsomal protein concentration >0.5 mg/ml, where certain chemical inhibitors (e.g., α -naphthoflavone, ketoconazole, benzylmorphine, quinidine) show substantial nonspecific binding (Nirogi et al., 2015). Because of high nonspecific binding, unbound concentration of an inhibitor at the

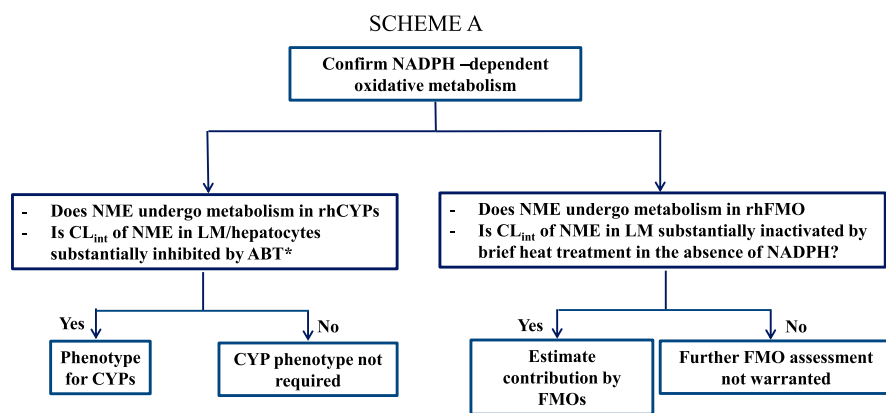


Fig. 3. Scheme A: Distinguishing P450- and FMO-mediated oxidation toward overall NME metabolism.

*Caution using ABT: Demonstrated to not inhibit certain CYP such as 2C9 (Linder et al., 2009)

NADPH= Nicotinamide Adenine Dinucleotide Phosphate reduced; NME= New Molecular Entity; rh= recombinant; CYP= Cytochrome P450; FMO= Flavin-containing Monooxygenase; LM = Liver Microsomes; ABT = 1-Aminobenzotriazole; CL_{int} = Intrinsic clearance

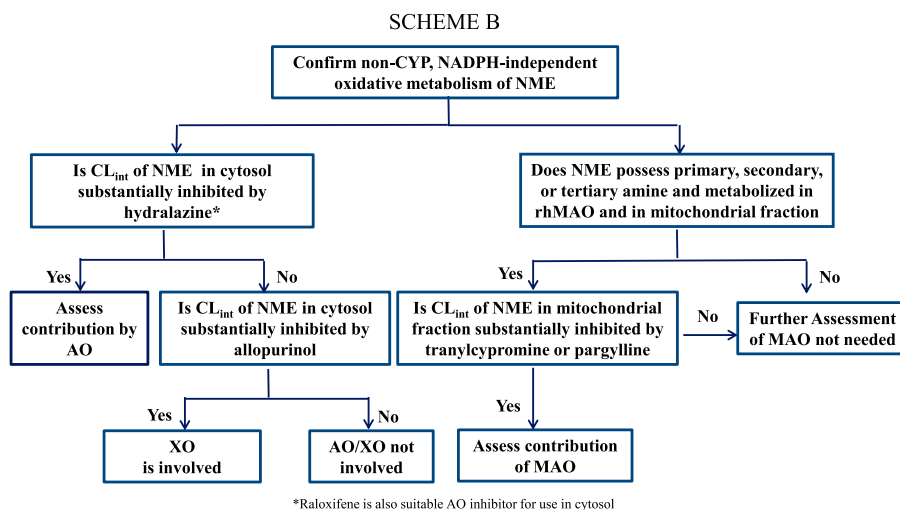


Fig. 4. Scheme B: Distinguishing AO-, XO-, and MAO-mediated oxidation toward overall NME metabolism.

NME = New Molecular Entity; CL_{int} = Intrinsic clearance; NME = New Molecular Entity; NADPH = Nicotinamide Adenine Dinucleotide Phosphate reduced; CYP = Cytochrome P450; AO = Aldehyde Oxidase; XO = Xanthine Oxidase; MAO = Monoamine Oxidase; rh = recombinant; CL_{int} = Intrinsic Clearance

enzyme active site may be suboptimal to attain the desired >90% inhibition of an intended enzyme. Furthermore, when using irreversible inhibitors, it is recommended that the experimental conditions including preincubation times be carefully optimized. Based upon a literature search of reported K_i or IC_{50} values for the inhibition of individual P450 enzymes and compilation of the information, a recommended concentration range of inhibitors to use is shown in Table 1. This range is intended to maximize the selectivity of the inhibitor for the specific P450 isoforms listed. The extent of inhibition by the P450-selective inhibitor provides information regarding the contribution of the inhibited enzyme to the total HLM oxidative metabolism. It is also recommended to maintain the NME concentrations below their $K_{m,apparent}$ values, so the IC_{50} value that is produced would be closer to the actual K_i value for the specific enzyme inhibition. Hence it is a good practice to establish $K_{m,apparent}$ values of a NME when using the chemical inhibition method.

Combined use of P450-selective inhibitors in HLM and rhCYP scaling methods (RAF/ISEF) provides investigators with high level of confidence in estimating the primary P450 isoforms involved in the hepatic oxidative clearance of a NME. In majority of cases of P450-mediated oxidative metabolism, f_m values obtained via either of these two methods are not expected to be substantially different, but on occasions differences may arise. Potential reasons include: 1) involvement of uncommon P450 isoforms (2J2, 4A11) or non-P450 enzymes; 2) nonideal experimental conditions where suboptimal inhibition is obtained from chemical inhibitors. Scenarios include high protein concentration resulting in high nonspecific binding of inhibitor resulting in <90% inhibition of the intended P450—this underestimates f_m of intended P450; use of excessive inhibitor concentration resulting in substantial cross-reactivity, which leads to overestimation of f_m of intended P450; high substrate/ NME concentration > K_m , resulting in

TABLE 1
Cytochrome P450 (P450)-selective inhibitors and recommended concentration range to use in vitro phenotyping studies

P450 Enzyme	Probe Substrate (median reported K_m value) ^a	Selective Inhibitor	Inhibitor Median Reported K_i or IC_{50} value ^a	Recommended Experimental Inhibitor Concentration Range
	μM		μM	μM
CYP1A2	Phenacetin (28)	Furafylline ^b	1.9	0.01–10
CYP2A6	Coumarin (2.5)	Methoxsalen ^c	0.48	0.005–5
	Bupropion (68)	Tranylcypromine	0.30	0.005–5
CYP2B6		Ticlopidine ^{b,d}	0.17	0.005–5
		PPP ^e	5.5	0.025–25
		thio-TEPA ^f	5.7	0.025–25
CYP2C8	Amodiaquine (3)	Montelukast ^g	0.019	0.002–2
CYP2C9	Tolbutamide (125)	Sulfaphenazole	0.50	0.005–5
	Diclofenac (5)			
CYP2C19	S-mephenytoin (40)	Ticlopidine ^{b,d}	1.2	0.01–10
		(+)-N-3-benzyl-nirvanol	0.24	0.005–5
CYP2D6	Bufuralol (9)	Quinidine	0.058	0.002–2
CYP2E1	Chlorzoxazone (74)	Diethyithiocarbamate	5.3	0.025–25
	Midazolam (3.5)	Ketoconazole	0.10	0.001–1
CYP3A4/5	Testosterone (54)	Azamulin ^b	0.15	0.005–5
	Nifedipine (12)			

^aThe University of Washington Metabolism and Transport Drug Interaction Database (<http://www.druginteractioninfo.org>) was queried in the category of “In vitro Parameters” for studies providing K_m values for the indicated substrates or K_i or IC_{50} values for the indicated precipitants. If more than one P450 was inhibited by the selected precipitant for a particular substrate metabolism, the corresponding K_i or IC_{50} values were excluded from the analysis. If individual K_i or IC_{50} values were listed for one study, the average was taken. If a range of values were given, the lowest value was taken. All queries were of data reported in the Database as of Jan 2013 or Nov 2015.

^bTime-dependent inhibitor, preincubation recommended (e.g., 15 min at 37°C before substrate addition).

^cMethoxsalen also inhibits CYP1A2 (median IC_{50} or K_i value of 0.70 μM).

^dTiclopidine inhibits both CYP2B6 and CYP2C19.

^e2-phenyl-2-(1-piperidinyl)propane.

^fN,N,N-triethylene thiophosphoramidate.

^g IC_{50} dependent upon microsomal protein concentration due to substantial microsomal protein binding of montelukast (Walsky et al., 2005).

overwhelming the inhibitory effect of reversible inhibitors and underestimating f_m of intended P450; 3) the lack of absolute specificity of the probe substrate and/or inhibitor for P450; 4) potential difference in P450 binding site for the probe substrate and the NME, where the NME may interact with the P450 at a binding site, different from that of the probe substrate (Mathur et al., 2013). Large discrepancies in f_m values obtained from chemical inhibition and rhCYP scaling methods, often result in considerable differences in the magnitude of the predicted victim DDI liability for a NME and warrant a systematic look into factors discussed above.

Correlation analysis is another method that has been assessed for the P450 isoforms (and infrequent cases of UGT; Kamdem et al., 2010); however, review of current industry practices among the working group member companies did not advocate this to be a method of choice for phenotyping of drug candidates, especially when there is discrepancy in the f_m values from RAF/ISEF and chemical inhibitor methods. A reason may be that a prerequisite for correlation analysis is the maintenance of a consistent collection of individual human liver microsomes, with a wide range of activity characterized for the metabolizing enzymes of interest. This is probably less practical/attractive for industry laboratories, which routinely use commercially available pooled human liver microsomes from 100–150 donors, for RAF/ISEF and chemical inhibitor studies. Correlation analysis is also substantially more labor intensive than RAF/ISEF and chemical inhibitor methods, and when multiple P450 isoforms are involved, data interpretation may not be straight forward and often yields only qualitative information on f_m .

Successful examples of predictions of exposure change of victim drug in the clinic based on experimentally determined *in vitro* $f_{m,CYP}$ have been reported. These examples use the methods described in the P450 phenotyping section as the standard approach (Youdim et al., 2008; Lu et al., 2008) and in theory can also be applied to non-P450 enzymes when appropriate tools are available.

Identification of Flavin-Containing Monooxygenases FMO 1, 3, 5

The flavin-containing monooxygenase (FMO) family comprises a group of flavin adenine dinucleotide-containing microsomal enzymes that catalyze oxidation of compounds containing soft nucleophilic groups. Typical FMO-catalyzed reactions are monooxygenation of heteroatoms such as nitrogen and sulfur (Hines et al., 1994; Cashman, 1995; Ziegler, 2002; Lang and Kalgutkar, 2003). Because the key intermediate of the FMO catalytic cycle is a reactive peroxide intermediate C(4 α)-hydroperoxyflavin, the FMO-mediated biotransformation is typically consistent with chemical reactions that involve peroxides or peroxyacids. Similar to P450 enzymes, NADPH and oxygen are required for FMO-mediated reactions. However, unlike P450 enzymes, FMO enzyme activities are generally greater at higher pH and can be inactivated by a brief heat treatment in the absence of the cofactor NADPH (Cashman, 2008). These methods are often applied *in vitro* to indicate and assess potential involvement of FMO in drug metabolism. The commercial availability of recombinant FMO1, 3, 5 isoforms has facilitated rapid identification of FMO-mediated pathways, because negative results from properly conducted recombinant enzyme experiments generally allows exclusion of FMO involvement in metabolism. Because of the lack of selective inhibitors and limited information on tissue abundance for various FMO isoforms, quantitative f_m determination via RAF/ISEF or chemical inhibitors for FMO has not been established. Nevertheless, a set of properly designed *in vitro* experiments may still provide a good estimate of the relative contribution of FMO to overall oxidative metabolism (Fig. 5).

FMO3 and FMO5 are both expressed at high levels in adult human liver (Overby et al., 1997; Zhang and Cashman, 2006; Cashman, 2012). Methimazole (Tables 2, 3, 4, 5) is a well-characterized substrate/inhibitor of FMO1 and FMO3, but displays very low affinity for FMO5

(Overby et al., 1995). Therefore methimazole can be used to assess the relative contributions of FMO3 and FMO5 in HLM to overall FMO-mediated metabolism (Fig. 5). However, this approach must be used in conjunction with the thermal inactivation approach because methimazole is also known to inhibit several P450 isoforms (Guo et al., 1997). FMO1 is highly expressed in human adult kidney. Therefore incubations in human kidney microsomes in the presence or absence of FMO1 inhibitor methimazole can be used to assess involvement of FMO1 (Fig. 5). Unlike human liver microsomal systems, heat inactivation of FMO has not been well studied or documented in human kidney microsomes.

In contrast to the P450 enzymes, FMO activity is not susceptible to induction or inhibition (Cashman, 2012) and known instances of drugs whose metabolism is primarily mediated by FMO is scarce (ranitidine, nicotine). Hence from the viewpoint of potential DDIs, FMO-mediated pathways are generally of less concern relative to P450-mediated pathways.

Estimating Fractional Contribution of Aldehyde Oxidase/Xanthine Oxidase

AO and XO are cytosolic molybdoflavoproteins that catalyze NADPH-independent oxidation of a wide range of substrates. Typical reactions include oxidation of aldehydes to the corresponding carboxylic acids and hydroxylation of aromatic *N*-heterocycles at the electron-deficient carbon atom adjacent to the heteroatom (Beedham, 1985; Pryde et al., 2010). Unlike P450 enzymes, the source of the oxygen atom that is added by AO or XO is from water. Therefore incubations with appropriate matrices can be carried out under $^{18}\text{O}_2$ or in the presence of H_2O^{18} to further investigate the enzymes involved, if necessary.

The involvement of AO or XO in oxidative metabolism of a NME can be determined directly by monitoring the metabolism of a NME in liver cytosol or S9 fraction in the absence of NADPH (Hutzler et al., 2013; Barr et al., 2014a). It is important that the source of liver tissue used in these studies was not derived from liver that had been perfused with solutions containing allopurinol, a common practice after full hepatectomy, because that tissue would be expected to have little or no XO activity due to residual allopurinol, an inhibitor of XO (Barr et al., 2014b).

If oxidative metabolism is observed in human liver cytosol, the enzyme(s) involved can be elucidated by the use of chemical inhibitors. Hydralazine and allopurinol ($\sim 50 \mu\text{M}$) have been identified as selective inhibitors of AO and XO (Tables 2–5), respectively, and, therefore, inhibition of oxidative metabolism by either of these inhibitors would implicate the corresponding enzyme (Johnson et al., 1985; Elion, 1988). Raloxifene or menadione can also be used to inhibit AO in incubations with liver cytosol, but these inhibitors are less suitable for studies in liver S9 fractions or hepatocytes due to either their instability or potential to inhibit P450 enzymes (Obach, 2004; Strelevitz et al., 2012).

Fractional metabolism by AO can be determined using hydralazine in human hepatocytes as has been established (Strelevitz et al., 2012). The difference in intrinsic clearance with and without hydralazine (Tables 2–5) divided by intrinsic clearance in the uninhibited state gives the fractional metabolism via AO. Conceptually this same approach could be applied to determine the fractional metabolism via XO by using allopurinol in place of hydralazine, but the authors are not aware of examples where this has been done.

Few marketed drugs are metabolized primarily by, or potentially inhibit, either AO or XO, so examples of drug interactions are rare. One notable example is allopurinol, an XO inhibitor designed to treat gout, which is contraindicated for coadministration with azathioprine, an immunosuppressant that is cleared via XO (Gearry et al., 2010). To date there is no example of drug interaction that occurs via inhibition of AO but the potential exists. Famciclovir is an antiviral prodrug that is converted to its active form penciclovir by AO (Clarke et al., 1995). Coadministration

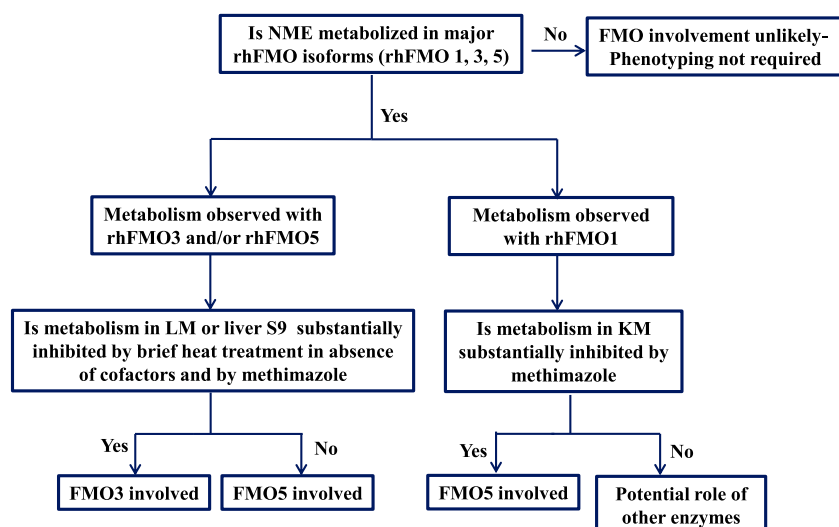


Fig. 5. Overall strategy to confirm role of FMO 1, 3, and 5 in NME metabolism.

NME = New Molecular Entity; FMO= Flavin-containing Monooxygenase; rh = recombinant; LM = Liver Microsomes; KM = Kidney Microsomes

of famciclovir with a potent inhibitor of AO such as raloxifene could potentially lead to a reduction in antiviral efficacy (Obach, 2004), but studies to determine the magnitude of this interaction have not been conducted. It was recently demonstrated that inhibition of AO may be substrate dependent and occur by mixed modes of reversible and irreversible inhibition, so care should be exercised in predicting drug interactions based on in vitro data (Barr and Jones, 2011, 2013a; Barr et al., 2014b).

Because of species differences in AO isoforms and activities, good preclinical models for human AO activity have yet to be identified (Choughule et al., 2013), so caution should be exercised in extrapolating AO-mediated overall metabolic clearance from animals to humans. In vitro-in vivo correlation (IVIVC) assessed for set of 11 drugs (Zientek et al., 2010) (Supplemental Materials) predominantly metabolized by this AO suggested that the IVIVC is typically poor and the AO-mediated in vivo clearance is usually underestimated. Reasons for this poor correlation have been attributed to the extrahepatic contribution of AO to

total clearance and the potential lability of AO in liver preparations used for in vitro studies. Recently the protein content of AO has been quantified in human liver cytosol (Barr and Jones, 2013; Barr et al., 2013; Fu et al., 2013). Use of these methods and their extension to extrahepatic tissues may help to define better our ability to predict contribution of human metabolic clearance via AO in the future.

Identification of Monoamine Oxidases MAO-A and MAO-B

Monoamine oxidase (MAO) is a flavin-containing protein located on the outer mitochondrial membrane of a wide range of mammalian cells in various tissues (Saura et al., 1996). MAO catalyzes the oxidative deamination of biogenic amines as well as basic amine-containing xenobiotics. MAO exists in two forms encoded by separate genes with 70% sequence homology (Weyler et al., 1990). MAO-A is found in the liver, gastrointestinal tract, and placenta, whereas MAO-B is found primarily in blood platelets.

TABLE 2
Inhibitors and recommended concentration range for non-P450 enzymes to use in vitro phenotyping studies

Enzyme	Selective Substrates (K_m)	Selective Inhibitor	Recommended Inhibitor Concentration Range (reported IC_{50} value)	References
	μM		μM	
AO	DACA ^a (8) Phthalazine (5)	Hydralazine Raloxifene ^c Menadione ^c	0.05–50 (IC_{50} = 0.5–5 ^b) 0.0001–1 (IC_{50} = 0.0029) 0.01–100 (IC_{50} = 0.2)	Johnson et al., 1985; Chen et al., 2002; Obach, 2004; Strelevitz et al., 2012; Barr and Jones, 2011, 2013
XO	Pterin (34) 6-mercaptopurine(6)	Allopurinol	0.01–100 (IC_{50} = 2)	Obach, 2004; Panoutsopoulos et al., 2004; Tapner et al., 2004; Pacher et al., 2006
MAO-A	Serotonin(100)	Clorgylline ^d *	0.0002–2 (IC_{50} = 0.002)	Leonardi and Azmitia, 1994; Kalgutkar and Castagnoli, 1995; Herraiz, 2009, 2012; Geha et al., 2001
MAO-B FMO (1, 3, and 5)	β -phenylethylamine(2) Benzydamine (FMO 1 = 24; FMO3 = 40)	(-) Deprenyl ^d * Methimazole	0.0002–2 (IC_{50} = 0.001) 10–500 (IC_{50} = 120)	Geha et al., 2001; Herraiz, 2009, 2012; Störmer et al., 2000

^aDACA = N-[(2-dimethylamino)ethyl]acridine-4-carboxamide.

^bDemonstrates substrate-dependent IC_{50} .

^cSuitable in liver cytosol, but less suitable for inhibition studies in liver S9 fractions or hepatocytes because of their potential to inhibit P450 enzymes and/or instability.

^dPargyline can also be used as non-specific inhibitor of MAO (Recommended concentration for phenotyping studies 0.5–2 μM ; IC_{50} for MAO-A is 0.01152 μM and for MAO-B is 0.00820 μM) (Fisar et al., 2010; Murphy et al., 1998).

*Irreversible inhibitors

TABLE 3
Recommended in vitro substrates and inhibitors of UGTs

UGT	Selective Substrates K_m	Selective Inhibitor	Recommended Inhibitor Concentration Range (reported IC_{50} value)	References
	μM		μM	
1A1	UGT1A1: 17 β -estradiol (3-glucuronide formation) (11, 170 ^b)	Atazanavir	0.01–20 (UGT1A1 IC_{50} = 0.31 ^a)	Lepine et al., 2004; Zhang et al., 2005; Itäaho et al., 2008; Walsky et al., 2012; Seo et al., 2014
1A3	UGT1A3: 17 β -estradiol (3-glucuronide formation) (250) (17-glucuronide formation) (67)	Lithocholic acid	0.01–20 (UGT1A3 IC_{50} = 7.9)	Lepine et al., 2004; Zhang et al., 2005; Itäaho et al., 2008; Walsky et al., 2012; Seo et al., 2014
1A4	Trifluoperazine (42, 67 ^b)	Hecogenin	0.02–20 (IC_{50} = 1.5 ^a)	Uchaipichat et al., 2006a; Walsky et al., 2012;
1A6	5-Hydroxytryptophol (420, 330 ^b)	Troglitazone	0.1–100 (IC_{50} = 28)	Ito et al., 2001; Krishnaswamy et al., 2004; Walsky et al., 2012
	Propofol (98, 46 ^b)	Digoxin	0.1–100 (IC_{50} = 1.7) ^b	Vietri et al., 2002; Lapham et al., 2012
1A9		Niflumic acid	0.01–100 (IC_{50} = 0.3 ^a)	Bernard and Guillemette, 2004
		Transilast	0.1–100 (IC_{50} = 0.7) ^b	Court, 2005; Mano et al., 2006
2B7	Zidovudine (586, 150 ^b , 77 ^c)	β -Phenyllongifolol-2	0.001–1 (IC_{50} = 0.006)	Bichlmaier et al., 2007; Manevski et al., 2011; Lapham et al., 2012; Walsky et al., 2012

^aThe University of Washington Metabolism and Transport Drug Interaction Database (<http://www.druginteractioninfo.org>) was queried in the category of “In vitro Parameters” for studies providing K_m values for the indicated substrates or K_i or IC_{50} values for the indicated precipitants. If individual K_i or IC_{50} values were listed for one study, the average was taken. If a range of values were given, the lowest value was taken. Median value was derived across all reported values. All queries were of data reported in the Database as of Dec 2015.

^bIn the presence of 2% BSA.

^cIn the presence of 1% BSA.

When a NME contains a primary, secondary, or tertiary amine, evaluation of the NME as a substrate of MAO-A or MAO-B is important for victim DDI risk assessment, especially if the NME is intended to be used concomitantly with MAO inhibitors in the clinic. The liver mitochondrial fraction where MAO activity is the highest may be used as an appropriate system to evaluate the contribution of MAO-A or MAO-B. The overall strategy to identify MAO-A or MAO-B is outlined in Fig. 6. When a basic amine-containing NME exhibits NADPH-independent metabolism in a mitochondrial fraction, it is warranted to further evaluate its metabolism in recombinant MAO-A and MAO-B (both are commercially available). If no metabolism is observed in either of the recombinant MAO isoforms, the probability of MAO involvement is low and no further evaluation is warranted. MAO-A preferentially oxidizes serotonin and is inhibited by low concentrations of clorgyline (Tables 2–5), whereas MAO-B preferentially oxidizes β -phenylethylamine and is inhibited by low concentrations of (–)deprenyl (Kalgutkar and Castagnoli, 1995; Geha et al., 2001; Youdim et al., 2006). Therefore the relative

contribution of MAO-A and MAO-B toward the overall oxidative metabolism of a NME may theoretically be assessed in hepatocytes using these isoform-selective inhibitors. However, use of chemical inhibition to assess contribution of MAO-A and MAO-B is not routinely done among companies, and literature cases of this approach are rare (Erickson et al., 2007). A RAF approach similar to that for P450s has been reported (Pybus et al., 2012) to evaluate the relative contribution of MAOs toward overall NME metabolism. But because the presence of MAO in microsomes is due to contamination during preparation, levels of MAO vary significantly between microsomal lots and microsomes are not recommended for MAO f_m determination, thereby limiting the utility of this approach.

MAO enzymes play a vital role in the inactivation of neurotransmitters (serotonin, noradrenaline, epinephrine, norepinephrine, dopamine), and a number of psychiatric and neurologic disorders are attributed to MAO dysfunction. MAO inhibitors are one of the major classes of drugs prescribed for the treatment of depression and anxiety (MAO-A inhibitors) and are used alone or in combination to treat Alzheimer's

TABLE 4
Recommended in vitro substrates and inhibitors of other non-P450 phase II enzymes

Enzyme	Selective Substrates K_m	Selective Inhibitor	Recommended Inhibitor Concentration Range (reported IC_{50} value)	References
	μM		μM	
GST	CDNB ^a 450 (A1–1) 580 (A2–2) 650 (M1a–1a) 910 (P1–1)	Ethacrynic acid ^b	0.1–1 mM [IC_{50} = 6 (α), 0.3 (μ), 3.3 (π)]	Polidoro et al., 1981; Warholm et al., 1983; Ploemen et al., 1990
NAT1	p-Amino benzoic acid (7.5)	Caffeic acid	0.1–1 mM (K_i = 479)	Kukongviriyapan et al., 2006
NAT2	Sulfamethazine (40)	Curcumin	1–100 (K_i = 15)	
CES–	Temocapril (CES1) (NA)	Digitonin	0.1–100 (IC_{50} = 9.2)	Nishimuta et al., 2014
	Trandolapril (CES1) (1734)	BNPP ^c	0.01–10 (IC_{50} = 0.1)	Fukami et al., 2010
	Imidapril (CES1) (4.3)			
	Mycophenolate mofetil (CES1/2) (225- CES1; 22.3- CES2)	Telmisartan	0.01–10 (IC_{50} = 0.5)	Fukami et al., 2010
	Irinotecan (CES2) (14.4)	Loperamide	0.01–10 (IC_{50} = 0.1)	
		BNPP ^c	0.01–10 (IC_{50} = 0.1)	

^aCDNB: 1-chloro-2,4-dinitrobenzene, nonn-selective.

^bPartially selective.

^cBis(4-nitrophenyl)phosphate (nonspecific).

TABLE 5

Reported in vitro substrates and inhibitors of SULT isoforms

2,6-Dichloro-4-nitrophenol is a potent SULT1A-selective inhibitor, with IC_{50} for inhibition of EE 3-O-sulfation of ~ 6.3 nM, which is more than 2 orders of magnitude over other SULTs (Schrag et al., 2004)

SULT	Selective Substrates K_m	Nonselective SULT Inhibitor	Reported IC_{50}	References
	μM		μM	
1A1	4-nitrophenol (4)	2,6-Dichloro-4-nitrophenol	1.44	Wang and James, 2006 Riches et al., 2009
1A3	4-nitrophenol (3000)		86.9	
2A1	Dehydroepiandrosterone (5)		40	
1B1	3,3', 5-Triiodothyronine (60)		400	
1E1	3,3', 5-Triiodothyronine (75)		30	

FMO, flavin-containing monooxygenase; AO/XO, aldehyde oxidase/xanthine oxidase; MAO, monoamine oxidase; UGT, uridine diphosphoglucuronosyltransferase; SULT, sulfotransferase; NAT, *N*-acetyl transferase; GST, glutathione *S*-transferase; CES, carboxylesterase.

and Parkinson's disease (MAO-B inhibitors). Several potent MAO inhibitors are marketed drugs, primarily to treat depression [such as Azilect (Teva Pharmaceuticals Ltd, Essex UK), Nardil (Pfizer Inc, New York, NY), Parnate (Glaxo Smith Klein, Ontario, Canada), Eldepryl (Somerset Pharmaceuticals, Inc., Tampa, FL), Marplan (Validus Pharmaceuticals, Parsippany, NJ), and Zelapar (Valeant Pharmaceuticals, Redwood City, CA)]. It is therefore useful to assess whether MAO-A/B has a major role in the metabolic clearance of an amine-containing NME to better understand potential victim DDI risk when coadministered with known MAO inhibitors.

Determination of Fractional Metabolism by Uridine 5'-diphospho-Glucuronosyltransferase

Commonly used methods for UGT reaction phenotyping are similar to those of P450s (albeit less well established for several UGTs still) and include the use of human recombinant enzymes and selective chemical inhibitors in human liver microsomal incubations (Court, 2005; Miners et al., 2010a,b).

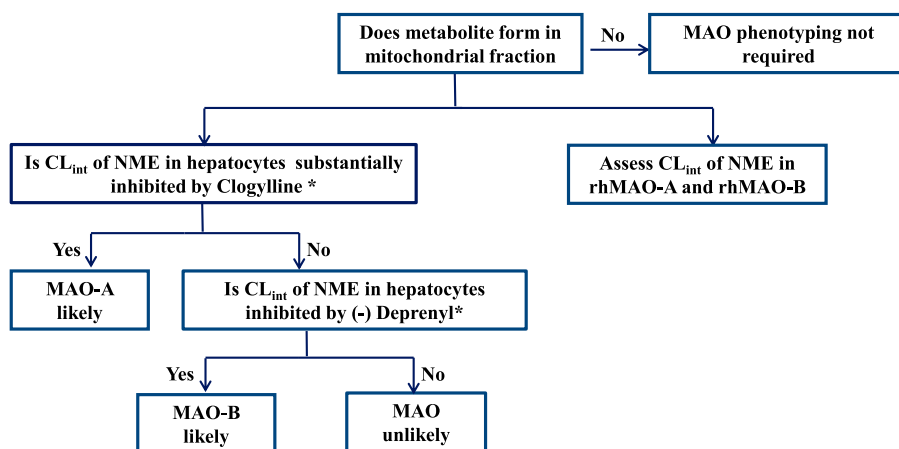
Recombinantly Expressed UGT Isoforms

Advances in the availability of human recombinant UGT isoforms, identification of selective probe substrates for several of the major UGT isoforms, and information of UGT protein quantification in various organs has allowed for f_m estimation of UGT via RAF/ISEF methods. Commercially available human recombinant UGT isoforms include the major hepatic UGTs, such as UGT1A1, 1A3, 1A4, 1A6, 1A9, 2B7, and 2B15, as well as UGTs that are expressed predominantly in the intestine

such as UGT1A8 and 1A10. Selective substrates for the major hepatic UGT isoforms have been identified (Tables 2–5) that may be suitable for reaction phenotyping studies and include 17β -estradiol (3-glucuronide formation) for 1A1, trifluoperazine for 1A4, 5-hydroxytryptophol for 1A6, propofol for 1A9 and zidovudine for 2B7 (Lepine et al., 2004; Krishnaswamy et al., 2004; Court, 2005; Uchaipichat et al., 2006a,b; Itaaho et al., 2008; Manevski et al., 2011; Walsky et al., 2012). Availability of selective probe substrates for the different UGT isoforms has allowed the determination of RAFs that have been useful in determination of relative contribution of different UGT isoforms in drug's metabolic clearance, as exemplified by recent publications on haloperidol (Kato et al., 2012) and laropiprant (Gibson et al., 2013). Information on protein quantification of several UGT isoforms has enabled determination of ISEF values to allow improved prediction of UGT reaction phenotyping. Protein abundance of various UGT isoforms including 1A1, 1A3, 1A4, 1A5, 1A6, 1A7, 1A8, 1A9, 1A10, 2B7, 2B10, 2B15, and 2B17 were quantified in human liver, intestine, and kidney primarily by LC/MS/MS (Fallon et al., 2013a,b; Milne et al., 2011; Harbourt et al., 2012; Sato et al., 2012; Schaefer et al., 2012; Sridar et al., 2013). Because of differences in the protein abundance values across different studies, caution should be taken when these values are used for the generation of ISEF values. It is advisable that either the median values or a range of values be used.

Chemical Inhibitors of UGT

Incubations in microsomes in the presence of selective UGT inhibitors may also be useful as a complementary method to assess the fractional metabolism by UGT. Tables 2–5 summarize examples of



* % Contribution = $(CL_{int} - CL_{int(+inhibitor)}) / CL_{int}$

NME = New Molecular Entity; MAO = Monoamine Oxidase; CL_{int} = Intrinsic Clearance; rh = recombinant

Fig. 6. Confirming role of MAO-A or MAO-B toward NME metabolism.

proposed selective substrates and inhibitors of five major hepatic UGT isoforms and recommended inhibitor concentrations relative to their inhibition potency (IC_{50} values). Examples of selective inhibitors are atazanavir for UGT1A1/1A3 (Zhang et al., 2005); hecogenin for UGT1A4 (Uchaipichat et al., 2006a,b; Walsky et al., 2012); troglitzone for UGT1A6 (Ito et al., 2001), digoxin, transilast, and niflumic acid for UGT1A9 (Vietri et al., 2002; Lapham et al., 2012); and β -phenyllongifolol-2 for 2B7 (Bichlmaier et al., 2007). Careful optimization of experimental conditions (Court, 2014; Zhou and Miners, 2014) (also more in Supplemental Materials) should be done for the selection of suitable inhibitor concentrations, e.g., when considering the presence of BSA, in particular for UGT1A9 and 2B7 reactions. These methods have not been well established yet for several other UGT isoforms. As with any chemical inhibitor (described in Determining Fractional Metabolism by P450: P450 Reaction Phenotyping), chemical inhibitors of UGT are rarely absolutely specific at higher concentrations used for phenotyping studies. It is therefore warranted to carefully assess and account for cross-reactivity when using chemical inhibitors. Additional tools appropriate for in vitro reaction phenotyping for an extended number of UGT enzymes considered to be important in drug metabolism need to be developed.

The use of selective inhibitors in liver microsomal incubations together with commercially available recombinant human UGT isoforms, selective probe substrates, and protein abundance information in intestine, liver, and kidney for some of the major UGT isoforms has led to the emergence of a more semiquantitative approach toward determination of the contribution of these UGT isoforms to overall drug clearance. However, current tools only allow quantitative scaling for limited UGT isoforms (UGT1A1, 1A6, 1A9, and 2B7), because this area remains an area of active growth. For drugs metabolized by both P450 and UGT, incubations in human liver, kidney, and intestinal microsomes together with P450 and UGT cofactors in the presence of BSA to improve $f_{m,CYP}$ and $f_{m,UGT}$ prediction have been proposed and is also an emerging area (Cubitt et al., 2011) (Supplemental Materials). IVIVC analyses (Miners et al., 2006) (Supplemental Materials) of limited dataset of UGT-mediated drugs suggest mixed success in the prediction of total UGT-mediated whole body clearance of drugs. Under-predictions were observed in cases like zidovudine and morphine, whereas reasonable success was demonstrated for drugs like laropiprant (Gibson et al., 2013), where inclusion of BSA was suggested to improve the predictions. Low incidence of UGT-mediated DDI in the clinic has also made it challenging to extrapolate in vitro $f_{m,UGT}$ values to those in the clinic. Analysis of limited cases of UGT-mediated DDIs as in lamotrigine-valproic acid (Rowland et al., 2006), zidovudine-fluconazole (Uchaipichat et al., 2006b), zidovudine-vaproic acid interactions also suggest improvement in predictions of DDI magnitude with addition of BSA. Addition of BSA to improve predictions of UGT-mediated clearance and for determining $f_{m,UGT}$ has not been standardized across companies and continues to be an area of further research.

Relative Contribution of Glutathione-S-Transferases

Fractional metabolism by GST may be assessed by intrinsic clearance in hepatocytes or human liver S9 fractions fortified with reduced glutathione (GSH). GST-mediated metabolism may also be qualitatively assessed by determining intrinsic clearance in the presence of GSH versus intrinsic clearance in cytosol in the presence of other cofactors that may be needed for other known or suspected pathways of metabolism (e.g., NADPH for P450-mediated oxidation or uridine diphosphoglucuronic acid for UGT). Intrinsic nonenzymatic reactivity of NME with GSH in buffer needs to be determined and factored in while establishing GST-mediated metabolism. Inhibitors such as ethacrynic acid may be used to confirm the involvement of GST isoforms (Ahokas et al., 1985; Ploemen et al., 1990), although sufficiently

selective inhibitors for the different GST enzymes are needed to conduct effectively reaction phenotyping in subcellular or cellular systems.

Human recombinant GST isoforms such as GSTA1, A2, M1, M2, P1, and T1 are available commercially and may be used to assess the qualitative contribution of the different GST isoforms in GSH conjugation. However, tissue abundance of various GST isoforms (including different GST genotypes) and GST isoform-selective substrates (Ginsberg et al., 2009) need to be further evaluated to develop scaling factors for reaction phenotyping using human recombinant GST isoforms.

Because of the expression of many GST isoforms in extrahepatic tissues (e.g., GSTP1 in erythrocytes) (Awasthi et al., 1994; Whalen and Boyer, 1998), in vitro-in vivo extrapolation of human clearance needs to take into consideration the contribution from extrahepatic organs (including blood). In vitro-in vivo extrapolation of GST-mediated metabolic clearance remains to be established, and hence data from in vitro experiments should be interpreted with caution when assessing overall metabolic clearance by GST. There are no reported metabolism-based DDIs via GST of which this working group is aware.

Estimating Relative Contribution of Sulfotransferases

Sulfotransferases (SULTs) are cytosolic enzymes that transfer a sulfonate group from 3'-phosphoadenosine-5'-phosphosulfate to a drug molecule, thereby making it more polar and readily excreted mostly in urine (Parkinson and Ogilvie, 2007). In addition to biotransformation of many endogenous substrates such as cholesterol, dehydroepiandrosterone, or estradiol and other estrogens, several hepatic SULTs are responsible for biotransformation of xenobiotics. These SULTs include SULT1A1, SULT1A2, and SULT2A1. Phenols and aliphatic alcohols are the major sites of sulfation on drug molecules. Other sites such as aromatic amines and primary amines can also undergo sulfation. However, unlike glucuronidation, sulfation usually does not occur on carboxylic acids. SULT and UGT often share similar substrate properties, such as conjugation on phenol groups. However, SULT is an easily saturable, high-affinity low-capacity enzyme class, whereas UGT is a low-affinity high-capacity enzyme class (Parkinson and Ogilvie 2007), due to which UGTs are often the predominant enzymes if phase 2 conjugation is the major metabolic pathway. In vitro studies need to be designed carefully to elucidate the sulfation pathway, because sulfation is easily saturated at low concentrations (Li et al., 1999; James, 2014).

Relative contribution by SULT for a given compound can be done using recombinant SULT isoforms to determine the intrinsic clearance value of a NME. The abundance of SULT isoforms in human liver, kidney, intestine, and lung has been reported using Western blot quantification (Riches et al., 2009) (Table 5), although the current literature is limited. The intrinsic clearance values in theory can be normalized by the reported relative abundance of SULT in human tissues (e.g., ng SULT/g cytosol) to obtain the relative contributions of each SULT toward the total clearance (assumption is that relative abundance of various SULT isoforms determined by Western blot is reflective of relative activity). 2,6-Dichloro-4-nitrophenol has been reported to inhibit various SULTs with varying potency (Wang and James, 2006). By using a combination of rhSULT and inhibition by 2,6-dichloro-4-nitrophenol (Tables 2–5) one can study the relative contribution of SULT isoforms in liver S9, cytosol, or hepatocytes. Improved predictions of $f_{m,SULT}$ using hepatic and intestinal scaling factors are also emerging (Gertz et al., 2011) and will be an area of continued research to see whether additional incorporation of $f_{m,SULT}$ will also refine predictions of $f_{m,CYP}$ and $f_{m,UGT}$ for NMEs that are metabolized by all the three enzymes (e.g., troglitazone). This working group is not aware of any reported cases of metabolic DDIs via SULT.

Identifying Role of *N*-acetyltransferases NAT1 and NAT2

The *N*-acetyltransferases (NATs) are an important family of metabolizing enzymes that catalyze direct conjugation of aryl and alkyl amine compounds such as hydrazine with the acetyl group of acetyl-CoA (Sim et al., 2008b). These cytosolic enzymes have been shown to be important in arylamine-containing drug detoxification and carcinogen activation and are present in liver, esophagus, stomach, small intestine, colon, ureter, bladder, and lung (Windmill et al., 2000). In humans, there are two functional NAT genes encoding two isoenzymes, NAT1 and NAT2. A genetic polymorphism at the NAT2 gene locus encoding for polymorphic NAT2 results in individuals with rapid, intermediate, or slow acetylator phenotypes (Sim et al., 2008a). NAT1, which also metabolizes a variety of arylamines including *p*-amino benzoic acid but not isoniazid, is also polymorphic, although the clinical effect of NAT1 polymorphism is less well defined compared with NAT2 polymorphisms. NAT polymorphism leads to different rates of inactivation of drugs, such as isoniazid, hydralazine, and sulfonamides, which undergo NAT-mediated metabolism.

NAT1 and NAT2 have distinct substrate specificities (Wu et al., 2007): NAT2 acetylates hydralazine, isoniazid, and sulfamethazine, whereas human NAT1 acetylates sulfamethoxazole, *p*-aminosalicylate, and *p*-aminobenzoylglutamate (folate catabolite). Human NAT2 is mainly in the liver and gut, whereas human NAT1 is expressed in many tissues (Windmill et al., 2000). Caffeic acid (Tables 2–5), ferulic acid, and gallic acid have been shown to selectively inhibit NAT1, whereas scopuletin and curcumin (Tables 2–5) have been shown to selectively inhibit NAT2 (Kukongviriyapan et al., 2006).

Once involvement of NAT1 or NAT2 is confirmed using recombinant NAT1 or NAT2, the relative contribution of NAT1 or NAT2 may be assessed in human hepatocytes, using selective chemical inhibitors, as outlined in Fig. 7. A RAF-type approach, using NAT1 or NAT2 probe substrates in commercially available NAT1 and NAT2 (fortified with cofactors acetyl-CoA and an acetyl-CoA regenerating system composed of acetyl-*dl*-carnitine and carnitine acetyltransferase) system can theoretically be scaled to total metabolism in human hepatocytes. However, such scaling approaches are not well established and should be interpreted with caution.

Because only a few drugs have *N*-acetylation as the major metabolic clearance pathway, documented incidences of NAT-mediated DDI are rare. However, potential inhibitions of NAT activity were reported by gypenosides, cisplatin, and nitrosoarene metabolites of carcinogenic arylamines (Chiu et al., 2004; Ragunathan et al., 2008; Liu et al., 2008). When NAT is identified to be the primary enzyme responsible for the metabolic clearance of a NME, it is advisable to assess the contributions of the NAT and isoforms using currently available tools.

Determining Relative Role of Carboxylesterase CES1 and CES2

Carboxylesterase (CES) enzymes are serine esterases responsible for the hydrolysis of esters, amides, thioesters, and carbamates (Laizure et al., 2013). In humans, the two major carboxylesterases known are human carboxylesterase-1 and human carboxylesterase-2. CES1 is primarily expressed in the liver, where it plays an important role in the metabolism of many prescribed medications including clopidogrel (Kazui et al., 2010; Hagiwara et al., 2009) and methylphenidate (Nemoda et al., 2009). CES2 is present predominately in the intestine, where it has been shown to hydrolyze anticancer prodrugs gemcitabine (Pratt et al., 2013), capecitabine (Ribelles et al., 2008), and irinotecan (Humerickhouse et al., 2000).

During in vitro assessment if NADPH-independent metabolism is observed with a NME exhibiting an ester or amide linkage, metabolism using rhCES1 and rhCES2 (commercially available) should be investigated. If no metabolism is observed in the recombinant CES, the probability of

CES involvement is low and no further evaluation is warranted. If NME metabolism is observed in the recombinant CES system, further assessment can be conducted using subcellular fractions, e.g., human liver (CES1 enriched, low CES2 levels) and intestinal (CES2 only) microsomal and/or S9 systems, in combination with specific substrates and inhibitors listed in Tables 2–5, to evaluate the relative contribution of CES to overall clearance (Zhu et al., 2009; Ross et al., 2012; Nishimuta et al., 2014; Shimizu et al., 2014). There are no known CES-mediated metabolic DDIs reported, making this enzyme class as a potentially low risk for causing metabolic DDIs.

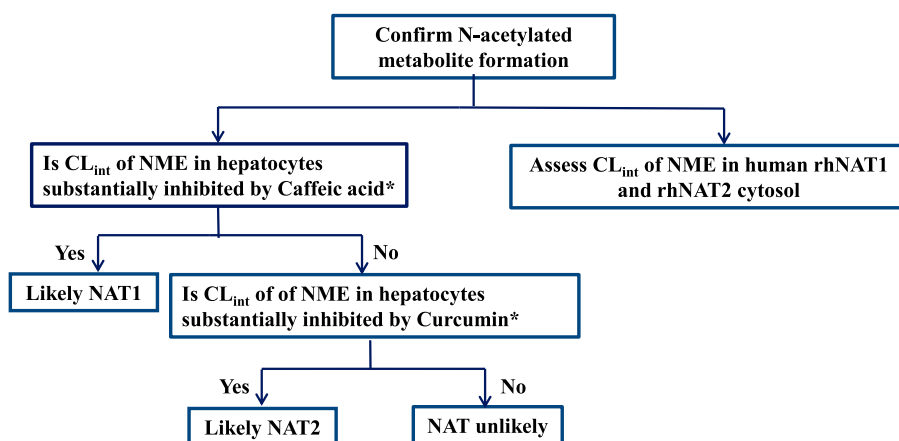
Special Considerations: Low Turnover, Extrahepatic Metabolism, Inhibition of Parallel Metabolic Pathways

Approaches for the Determination of Metabolic Pathways for Low Clearance Compounds. The determination of fractional metabolized in subcellular systems or in recombinant enzymes by metabolite formation kinetics or substrate depletion approaches may become problematic for compounds that exhibit very low intrinsic clearance. An example is ertugliflozin (PF-04971729), a selective inhibitor of the sodium-dependent glucose cotransporter 2. Reaction phenotyping studies indicated that both P450 (CYP3A4/3A5) and non-P450 pathways (UGT1A9 and UGT2B7) are involved in the metabolism of this compound (Kalgutkar et al., 2011). However, quantitative assignment of each of these pathways was not feasible because of low in vitro turnover in hepatic microsomes and hepatocytes. Subsequent to the in vitro evaluation, human ¹⁴C-ADME study using ¹⁴C-ertugliflozin showed that UGT was the major metabolic pathway, whereas P450 metabolism was minor (Miao et al., 2013). In general, upon understanding the total picture of metabolism from the ¹⁴C-ADME study, quantitative in vitro delineation of the enzymes responsible for metabolic clearance can be done by measuring the rates of metabolite formation using HPLC-MS with authentic metabolite standards. Recently, approaches including the hepatocyte relay method (Di et al., 2013) and coculture models, such as HepatoPac or Hurel (Chan et al., 2013), have been evaluated and have shown promising results to better determine CL_{int} via increasing the amount of substrate depletion or metabolite formation. Although these systems have gained considerable popularity in generating metabolites and determining intrinsic clearance of very low clearance compounds, the use of these models for phenotyping studies is under development (Yang et al., 2016).

With radiolabeled NME, when metabolites generated during a microsomal incubation under linear kinetics are too low in quantity to be quantified accurately by a radioactivity detector, a more sensitive LC/MS/MS method may provide an alternative for quantification. In early development when synthesized metabolite standards are usually not available, a radioactive calibration approach (Yu et al., 2007; Yi and Luffer-Atlas, 2010) can be applied. In this approach, bioreactors (concentrated pool of enzymes) can be used to generate a sufficient amount of metabolites. Metabolites generated via this method usually follow nonlinear kinetics. Also, because in the majority of the cases metabolites are formed under supraphysiologic NME concentrations, they may not reflect the high-affinity low-capacity pathway predominant in vivo. The samples can be injected in parallel into a radioactivity detector / LC/MS/MS system to determine the ratio of radioactive disintegrations per minute and LC/MS/MS peak area for each metabolite, and a calibration ratio can then be calculated for each metabolite, as:

$$\text{Metabolite}^*(\text{DPM}) = \text{LC/MS/MS peak area from kinetic incubation}^* \text{DPM/peak area ratio from the bio-reactor incubation}$$

Further calculation can be applied to obtain the absolute concentration of a metabolite of interest by using parent drug as an additional calibration



$$* \% \text{ Contribution} = (CL_{\text{int}} - CL_{\text{int}}(+\text{inhibitor})) / CL_{\text{int}}$$

CL_{int} = Intrinsic Clearance; NME = New Molecular Entity; NAT = N-acetyl Transferase; rh = recombinant

Fig. 7. Confirming role of NAT1- and NAT2-mediated metabolism of an NME.

(Yi and Luffer-Atlas, 2010). Thus, the metabolites can be detected using the LC/MS/MS and quantified using the calculation above.

Extrahepatic Extraction

Several P450 and non-P450 enzymes discussed above are expressed in intestine and kidney in addition to liver, which is recognized to be the major metabolizing organ. So for refined assessments of victim DDI interactions, primary site of metabolism needs a case by case consideration once the major DMEs involved have been identified. Intestinal CYP3A4-mediated metabolism has been implicated to be major contributor of the overall first-pass metabolism of a large number of CYP3A4 substrates, such as cyclosporine, tacrolimus, midazolam, felodipine, simvastatin, atorvastatin, verapamil, and nifedipine, where inhibition of intestinal CYP3A4 may significantly contribute to the overall magnitude of a DDI. Analysis and comparison of observed and estimated ratio change of fraction extracted in gut (F_G) $F_{G,\text{inhibited}}/F_G$ for CYP3A4 victim drugs have highlighted the need to accurately estimate and incorporate $F_{G,\text{inhibited}}/F_G$ ratio for prediction of a DDI magnitude of a victim drug (Galetin et al., 2007, 2008), in particular for highly extracted victim drugs whose $F_G \leq 0.5$. For such drugs that undergo high first-pass intestinal extraction ($\geq 50\%$), magnitude of DDI will be very sensitive to inaccuracies in estimating the $F_{G,\text{inhibited}}/F_G$ ratio. Because F_G is not a commonly measured parameter in clinic it is strongly recommended to understand the impact of uncertainty of $F_{G,\text{inhibited}}/F_G$ ratio via sensitivity analysis modeling (more in modeling and simulation section). Metabolism-based DDIs in kidneys have not been reported.

Impact of Simultaneous Inhibition of Parallel Metabolic Pathways/Enzymes

It is generally desirable for a NME to have multiple metabolic pathways of clearance so when one pathway is inhibited the impact on its exposure change is not drastic. However, investigators should appreciate cases where parallel metabolic pathways of a victim NME are simultaneously inhibited (Ogilvie and Parkinson, 2014). This can potentially occur because of simultaneous loss of activity of multiple DMEs involved in the parallel metabolic pathways of the victim DME or DME and transporters, via any combination of factors such as genetic polymorphism, chemical inhibition, and disease state. The result is a dramatic change in exposure of a victim NME. Several victim DDI examples are well documented, including those of propranolol (genetic polymorphism); omeprazole, lansoprazole (genetic polymorphism + P450 inhibitor); telithromycin (disease state + P450 inhibitor); and

ramelteon (multi-P450 inhibitor) (Obach and Ryder, 2010). Investigators are encouraged to read some excellent publications for detailed understanding of the complex nature of such victim DDIs (Ito et al., 2005; Isoherranen et al., 2012; Ogilvie and Parkinson, 2014) and consider this on a case by case basis during NME development, as also recommended in regulatory guidances (http://www.ema.europa.eu/docs/en_GB/document_library/Scientificguideline/2012/07/WC500129606.pdf; <http://www.fda.gov/downloads/Drugs/GuidanceComplianceRegulatoryInformation/Guidances/ucm292362.pdf>).

Current Status for Phenotyping of P450 and Non-P450 Enzymes

Substantial research over the past several years to mitigate P450-mediated victim DDI in the clinic has enhanced our ability to predict $f_{m,\text{CYP}}$ of NMEs with high confidence, using commonly used methods of RAF/ISEF and use of P450-specific chemical inhibitors. Several of these examples have been summarized in literature publications (Youdim et al., 2008; Lu et al., 2008) and in recent regulatory submissions as in the case of ibrutinib (<http://www.fda.gov/Drugs/InformationOnDrugs/ApprovedDrugs/ucm432240.html>). Substantial higher incidence of P450-mediated compared with non-P450-mediated DDI cases in the clinic has allowed scientists to assess the IVIVC of the observed P450-mediated victim DDIs and therefore to gain better confidence in the currently available in vitro tools, such as scaling methods, recombinant enzymes, probe substrates, and selective chemical inhibitors of P450s. The knowledge gained from the P450s has been applied to other non-P450 enzymes, which has led to tremendous growth in the understanding of the non-P450 enzymes and identification of selective inhibitors and probe substrates for several of the non-P450 enzymes, as discussed in this section and summarized in Tables 2–5. This has remarkably increased the confidence among researchers to predict overall P450 versus non-P450 contribution toward the hepatic metabolism of a NME (Table 6). However, extrahepatic tissue abundance and activity information for majority of the non-P450s (including several UGT isoforms) is still largely absent. This poses a challenge in estimating $f_{m,\text{non-CYP}}$ toward NME clearance if extrahepatic enzymes are substantially involved as primary metabolic pathways. This is demonstrated from lack of predictive power to accurately assess contribution of non-P450 enzymes AO and UGT toward overall drug clearance, observed in the analysis of known, limited set of drugs metabolized by AO (Zientek et al., 2010) and UGT (Miners et al., 2006). Scaling factors for human liver, kidney, and intestinal matrices are emerging and will continue to be an area of active research to refine predictions of $f_{m,\text{CYP}}$ and $f_{m,\text{non-CYP}}$.

enzymes. Because of scarce incidence of reported non-P450-mediated clinical DDIs (such as those of XO-mediated allopurinol- azathioprine, UGT-mediated lamotrigine-valproic acid, zidovudine-fluconazole and, zidovudine-vaproic acid), extrapolation of in vitro $f_{m,non-CYP}$ to a clinical setting continues to be a challenge and will be monitored closely by companies as more NMEs, with involvement of non-P450 enzymes emerge in coming years.

Knowledge of $f_{CL,metabolism}$ as it grows with the progression of a potential drug candidate through various development stages is used in concert with the f_m data and allows better informed estimates of the overall victim DDI potential of a NME. The next section will discuss common approach how information gathered at various stages of drug development is used to estimate the contribution of metabolism to overall NME clearance.

Approaches to Determine Clearance Pathways

Regulatory guidances from FDA and EMA (<http://www.fda.gov/downloads/Drugs/GuidanceComplianceRegulatoryInformation/Guidances/ucm292362.pdf>; http://www.ema.europa.eu/docs/en_GB/document_library/Scientificguideline/2012/07/WC500129606.pdf) indicate that a clearance pathway, which constitutes $\geq 25\%$ of the total clearance, is a reasonable starting point for further clinical assessment to mitigate a potential victim DDI risk. Additionally, this information may be used to assess the need for evaluating pharmacokinetics in special populations, such as hepatic and renal impairment or pediatrics depending on the expected patient population. It is important to have a conceptual understanding as to why we are interested in determining whether a clearance pathway is major or minor. Two fundamental questions aid in providing a basis: 1) what are the intrinsic (e.g., genetics, disease state, age) and extrinsic (e.g., coadministered drugs, herbal supplements, smoking, diet) factors that may influence the pharmacokinetics of a NME and 2) are these intrinsic or extrinsic factors likely to result in dose

adjustment based on pharmacological response or safety issues? Once these factors have been considered, a development program with appropriate drug interaction studies and/or comedication exclusions can be implemented. The process to understand the clearance pathways starts early in pre-FIH stages and is refined during the course of clinical development. Knowledge gained to better understand clearance pathways at various stages is summarized in this section.

Prediction from Preclinical Species and In vitro Systems—Learning from an In Vitro:In Vivo Correlation Approach (Pre-FIH)

Early qualitative assessment of clearance routes in human starts in preclinical stage via assessment of IVIVC in preclinical species. A typical IVIVC approach is outlined in Fig. 8. Assessments of the contribution of metabolism, renal, and biliary elimination ($f_{CL, metabolism/renal/biliary}$) toward total NME clearance are commonly made in at least two preclinical species. Preclinical PK studies, conducted with unlabeled or radiolabeled NME using intact or bile duct-cannulated (BDC) animals can provide information as to the route(s) of clearance based on quantification of unchanged drug in urine, feces, and bile (in case of BDC). Assessment of f_{CL} quantitatively can be best done with the use of a radiolabeled NME. However, useful information can also be obtained from studies using unlabeled NMEs under careful considerations such as the potential lack of mass balance and the assumption that all unrecovered NME was metabolized (i.e., major route of clearance was via metabolism), which may not be correct.

The route of clearance derived from in vivo preclinical animal studies may be used to provide some qualitative insight into a NME's route of clearance in humans. Experience among different pharmaceutical companies suggests that if the NME is predominantly metabolized in animals and there is a good IVIVC in multiple preclinical species, metabolism is likely the major clearance pathway in humans. Similarly, if a NME is primarily cleared unchanged renally in animals, a substantial

TABLE 6
Currently available tools for in vitro prediction of f_m for P450 and non-P450 enzymes

Enzyme	Tools available for RAF or ISEF			Chemical Inhibitors	f_m Measurement (from in vitro studies)	Clinical Victim DDI Risk* (Reported example of victim drug)
	Recombinant Enzyme	Probe metabolic pathway	Tissue abundance			
P450	Yes (various)	Yes ^a	Yes ^a	Yes ^a	Quantitative	High (terfenadine, astemizole, cisapride)
FMO	Yes (1, 3, 5)	Yes ^b	Yes ^c	Yes ^b	Qualitative	Low
AO/XO	Limited	Yes ^d	Emerging ^e	Yes ^d	Qualitative	Moderate (allopurinol-XO)
MAO	Yes (A and B)	Yes ^d	No	Yes ^d	Qualitative	Low
UGT	Yes (various)	Yes ^f	Emerging ^g	Yes ^h	Quantitative ^f	Moderate (morphine, zidovudine, lorazepam, mycophenolate mofetil)
SULT	Yes (various)	Limited ⁱ	Emerging ^j	Yes ^b	Qualitative	Low
NAT	Yes (1 and 2)	Yes ^k	No	Yes ^k	Qualitative	Moderate (isoniazid)
GST	Yes (various)	No	Emerging ^l	Yes ^b	Qualitative	Low
CES	Yes (1 and 2)	Yes ⁿ	Emerging ⁿ	Yes ⁿ	Qualitative	Low

RAF, relative activity factor; ISEF, intersystem extrapolation factor; DDI, drug-drug interaction; P450, cytochrome P450; FMO, flavin-containing monooxygenase; AO/XO, aldehyde oxidase/xanthine oxidase; MAO, monoamine oxidase; UGT, uridine diphosphoglucuronosyltransferase; SULT, sulfotransferase; NAT, *N*-acetyl transferase; GST, glutathione *S*-transferase; CES, carboxylesterase

^aHigh, several reported; Moderate, rare/occasional reported; Low, none reported

^bFor major isoforms (Table 1).

^cNonisoform selective (Table 1).

^dmRNA-based abundance reported (Identification of Flavin-Containing Monooxygenases FMO 1, 3, 5).

^eTable 1.

^fIn liver (Estimating Fractional Contribution of Aldehyde Oxidase/Xanthine Oxidase).

^gFor some isoforms, e.g., 1A1, 1A4, 1A6, 1A9, 2B7 (UGT Section and Table 1).

^hFor some isoforms e.g., 1A1, 1A3, 1A4, 1A5, 1A6, 1A7, 1A8, 1A9, 1A10, 2B4, 2B7, 2B15, 2B17 in liver, intestine, and kidney (Determination of Fractional Metabolism by Uridine 5'-diphospho-Glucuronosyltransferase).

ⁱFor some isoforms e.g., 1A1/3, 1A4, 1A6, 1A9, 2B7 (UGT section and Table 1).

^jLimited (Table 1).

^kmRNA-based for 1A1, 1A3/4, 1B1, 1E1, 2A1 in liver, intestine, kidney, lung (Estimating Relative Contribution of Sulfotransferases).

^lLimited reports (Identifying Role of *N*-acetyltransferases NAT1 and NAT2) (Table 1).

^mLimited report -GSTA1, A2, M1, M2, M3, and P1 (Relative Contribution of Glutathione-S-Transferases).

ⁿTable 1.

^oLimited reports (Determining Relative Role of Carboxylesterase CES1 and CES2) (Table 1).

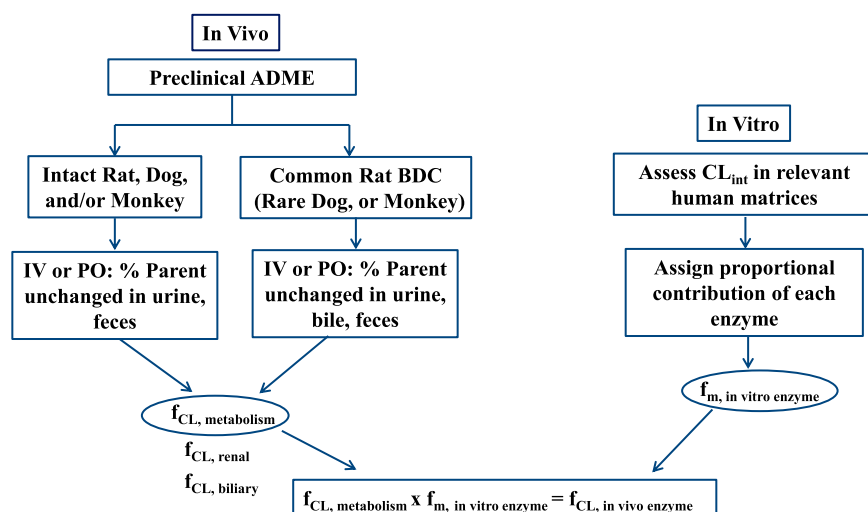


Fig. 8. Estimating fractional metabolic clearance of an NME using information from preclinical studies and in vitro information using human liver matrices-IVIVC approach.

ADME=Absorption Distribution Metabolism Excretion; BDC = Bile Duct Cannulated; CL_{int} = Intrinsic Clearance; IV= Intravenous; PO= Oral; f_m = Fraction Metabolized; f_{CL} = Fraction Cleared

proportion of the NME may be expected to be cleared unchanged renally in humans. Thus insight into the qualitative involvement of metabolic or renal clearance in humans may be obtained based on results from multiple preclinical species.

Prediction of $f_{CL,renal}$ in humans from preclinical species has been done with reasonable success when the NME is cleared via passive filtration (Paine et al., 2011), but knowledge is still emerging for NMEs cleared via active secretion and reabsorption. Because these latter processes usually involve transporters, interspecies differences can be expected and extrapolation from animals to humans may not be straightforward. Based on analysis of a large dataset of renally excreted compounds (Varma et al., 2009), physicochemical properties such as ionization state, lipophilicity, and polar descriptors have been proposed as important determinants of human renal clearance, taking into consideration both net reabsorption as well as net secretion. Such early assessments may be valuable in identifying compounds with potentially high $f_{CL,renal}$ and aid to refine overall contribution of metabolism toward the clearance of the compound. The BDC rat is a routinely relied upon model for the prediction of biliary excretion in humans and to provide qualitative insight into hepatobiliary disposition in humans. However, because of significant species differences in the function, substrate specificity, and regulation of transporter proteins, it is difficult to directly extrapolate animal hepatobiliary data quantitatively to humans (Ishizuka et al., 1999; Wang and LeCluyse, 2003; Ghibellini et al., 2006; Swift et al., 2010). In vitro models have begun to emerge to characterize hepatobiliary elimination (Pfeifer et al., 2013) and predict the extent of biliary excretion of drugs in humans. Establishing IVIVC of biliary excretion in humans remains a challenge in part because of the lack of high-quality and quantitative biliary excretion data in humans. Hence, the predictive power of in vitro models for estimation of $f_{CL,biliary}$ in humans remains debatable.

During preclinical PK studies, metabolite profiles from in vivo animal studies are usually compared with those from in vitro animal studies in subcellular fraction or hepatocytes. A good IVIVC of metabolic pathways in multiple preclinical species can offer some confidence in predicting major metabolic pathways in humans from in vitro human data. An early estimate of in vitro contribution of phase 1 (P450 versus non-P450 oxidation) and phase 2 (conjugation) metabolic pathways toward metabolic clearance of a NME also gives a preliminary estimate of any potential victim DDI risk associated

with a pathway (such as those involving P450). Availability of current robust in vitro human models including human-derived subcellular fractions, recombinant enzymes, or hepatocytes, have allowed researchers to gain better confidence from successful prediction of in vivo human profiles before Phase I studies.

This IVIVC exercise allows early qualitative assessment of the role of metabolism and potential metabolic pathways in humans and raises any alert of potential victim DDI risks. Researchers should recognize that the metabolic pathways in vitro may not reflect primary metabolic pathways in vivo. Also, reliance on animal data to predict human metabolic pathways is not recommended, because the extent of metabolism and metabolic pathways in humans can be very distinct from that in animals. This is especially true when non-P450 metabolizing enzymes and transporters are involved in the disposition of a NME.

Learning from First-in-Human Studies

In early clinical development, information of metabolic clearance pathways is gained from metabolite profiling studies using plasma and urine samples routinely collected from the FIH single and/or multiple dose (SAD and/or MAD) studies. Innovative advances in high-efficiency sample preparation and response normalization-based bio-analytical techniques (^{14}C -calibrant approach, use of quantitative NMR; Yu et al., 2007; Vishwanathan et al., 2009; Ramanathan et al., 2010; Dear et al., 2011) have made it possible for investigators to gain reliable quantitative estimates of metabolic pathways in plasma and urine in the absence of authentic metabolite reference standards. Quantitation of unchanged drug in urine enables preliminary estimation of $f_{CL,renal}$.

Assessment of metabolic clearance pathways in feces in cold FIH studies is not a common practice because of the lack of established quantitative methods to assess drug/metabolite recovery in cold fecal samples. It is therefore recommended to exercise caution for victim DDI risk assessments with estimates of metabolic clearance pathways in plasma and urine only, because the metabolism information based on these two matrices will be incomplete. A common and often erroneous assumption at this stage is that metabolites detected in plasma and urine truly represents all the major metabolic pathways of a NME. This assumption may hold in cases where a NME and its metabolites are predominantly cleared renally, where $f_{CL,metabolism}$ and $f_{CL,renal}$ may be obtained with reasonable confidence. However, elimination of unchanged NME and/or metabolites via biliary excretion into feces may also contribute substantially toward overall clearance, in which case

clearance pathway information derived from fecal samples will be an important determinant of f_{CL} and f_m . Recent advances in clinical devices as Entero-Test (Guiney et al., 2011; Bloomer et al., 2013) have enabled direct assessment of drugs and metabolites excreted into the bile of humans. This method can be applied in early clinical development to provide qualitative information on the risk of interactions for drugs that are metabolized and eliminated in bile. Increased conduct of ^{14}C -microtracer studies (trace ^{14}C -NME administered as part of SAD and MAD studies), coupled with accelerator mass spectrometry (AMS) detection (Lappin and Stevens, 2008) have also enabled investigators to gain quantitative information of metabolic clearance pathways in circulation and in feces early in clinical development.

Information gathered from early metabolite profiling in FIH studies is valuable to get a first look into the major metabolic clearance pathways in plasma and urine and in certain cases bile (quantitative information when ^{14}C -microtracer studies have been incorporated into FIH study designs or qualitative when techniques such as Entero-Test have been used). In addition, metabolite profiling in FIH studies can prove valuable in identifying primary metabolic pathway *in vivo* that may not have been previously identified in *in vitro* human models pre-FIH, although such cases are of low incidence. With certain caveats as discussed above, the overall learning from FIH study is helpful in refining victim DDI risk assessments made at pre-FIH stages.

Route of Clearance Determination in Human ^{14}C -ADME Study

Human ^{14}C -ADME study is deemed the gold standard *in vivo* study to quantitatively determine routes of clearance and metabolic pathways of a NME (ensuring good mass balance is observed), where unchanged drug and drug-derived metabolites are measured in plasma, urine, and feces. Data from the radiolabeled metabolite profiling in human are informative in the planning and design of definitive *in vitro* reaction phenotyping and clinical DDI studies required in support of a NME's registration. When formation of secondary or tertiary metabolites is observed, it is assumed that the enzyme involved in the formation of the primary metabolite is of the most interest for DDIs (assuming a worst-case scenario).

A caveat to consider in these studies is the difficulty sometimes in interpretation of clearance pathways in feces based on metabolite profiles observed in fecal samples. Gut microflora can potentially convert certain metabolites back to their parent (e.g., known for glucuronides and N-oxides). After an oral dose (dosing route for majority of drugs), unchanged NME detected in feces could be due to: 1) either unabsorbed drug or hepatically formed metabolites excreted in bile and further metabolized to parent drug by gut microflora, or 2) absorbed drug excreted unchanged in bile via liver, or 3) intestinal secretion of unchanged drug. Metabolites in feces, especially if observed at substantially higher levels in feces compared with lower/nonexisting levels in circulation, may also indicate substantial metabolism via intestinal enzymes. Potential contribution of intestinal and hepatic metabolizing enzymes (and transporters) toward NME metabolism and excretion into feces versus unabsorbed drug component is important to understand for victim DDI risk evaluation.

Ideally the best estimate of $f_{CL,biliary}$ can be made after intravenous dosing of a NME (radiolabeled or radiotracer) followed by determination of unchanged NME in feces but intravenous ^{14}C -ADME studies are not routinely done (approximately 20% of ^{14}C -ADME studies done across IQ companies were via intravenous route). Enhanced appreciation of information gathered from such studies has resulted in increased conduct of microtracer intravenous ^{14}C -ADME in recent years with primary goals of providing better understanding absolute bioavailability/PK, mass balance, and routes of clearance. It should be noted that intestinal secretion cannot be confidently determined even after an

intravenous dose because of the fact that quantitative, uninterrupted bile collection from healthy humans is not possible.

Investigators need to comprehensively understand the contribution of metabolism toward the overall routes of clearance of a NME via careful quantitative evaluation of metabolite profiles in plasma, urine, and feces. Understanding the site of formation of primary metabolites (e.g., intestine, liver, or kidney) is crucial in evaluating metabolizing enzymes involved in the primary metabolic pathways and responsible for precipitation of metabolic victim DDI.

Incorporating robust *in vitro* f_m data and $f_{CL,metabolism}$ information with appropriate modeling and simulation may also provide better confidence in prediction of victim DDI liability in the clinic. Modeling and simulation allows investigators to better assess dependence/sensitivity (i.e., the uncertainties in measurement of these parameters) of these key victim DDI parameters and their impact on clinical DDI timing and study design at different stages of drug development. The following section will briefly discuss various commonly used modeling approaches along with an explanation of their suitability in specific development phases based on available data and specific questions of interest.

Application of Modeling and Simulation Tools in Victim NME DDI Predictions

Over the past 10 years, modeling and simulation approaches have increasingly been evaluated for their utility in predicting the magnitude of DDIs, particularly those mediated by P450s, by pharmaceutical companies and regulatory agencies. Results from these evaluations have led to increased application of quantitative modeling and simulation approaches, which has been attributed to an improved understanding of the factors that affect prediction accuracy and led to increased confidence in DDI prediction. Pharmaceutical companies have used quantitative DDI predictions to impact decision making in drug development and support interactions with regulatory agencies. Regulatory agencies recognize the value of DDI prediction using modeling and simulation tools as highlighted by the recent FDA and EMA draft guidance documents (http://www.ema.europa.eu/docs/en_GB/document_library/Scientific_guideline/2012/07/WC500129606.pdf; <http://www.fda.gov/downloads/Drugs/GuidanceComplianceRegulatoryInformation/Guidances/ucm292362.pdf>).

The most commonly used approaches for quantitative DDI prediction include static concentration predictions and dynamic concentration prediction by a more mechanistic physiologically based pharmacokinetic (PBPK) modeling approaches. Numerous methodologies based on both simplified and PBPK-based approaches have been well defined previously in the literature (Brown et al., 2006; Fahmi and Ripp, 2010; Peters et al., 2012). In all cases, model selection should be driven by specific development questions and the extent of data available at the time of model development. Briefly, available predictive models for victim DDI prediction can be generally organized into three categories: simple static, mechanistic static, and mechanistic dynamic models (Supplemental Table 3S).

Simple Static Models

Static models are based on a single static perpetrator concentration. In the most simplified versions, f_{mCYP} for victim drug is assumed to be 100% (worst case scenario). Numerous reference concentrations for perpetrator (total or unbound) have been proposed previously (Ito et al., 2004; Obach et al., 2007). Generally for the perpetrator, the total average concentration at steady state, maximum concentration at steady state, or hepatic inlet concentration are recommended and used to predict victim drug interactions in the liver using the static model (<http://www.fda.gov/downloads/Drugs/GuidanceComplianceRegulatoryInformation/Guidances/ucm292362.pdf>).

Therefore, this approach often leads to overpredictions of victim DDIs (Ito et al., 2003). The static model can be a useful tool for early DDI risk assessment when supporting data are limited (e.g., during early discovery phase).

Mechanistic Static Models

Mechanistic static models incorporate more victim drug information, such as estimated $f_{m,CYP}$ and impact of the DDI on both hepatic and gut metabolism (Obach et al., 2006) or the integrated impact of competitive or mechanism-based inhibition and induction (Fahmi et al., 2008). The mechanistic static model is often applied once in vivo victim drug data are available, although this is not required (Table 7, example 6).

Mechanistic Dynamic Models

Mechanistic dynamic models including physiologically-based pharmacokinetic (PBPK) simulations incorporate the time-dependent change of both perpetrator and victim drug concentrations over the time course of the DDI. Therefore, this approach permits investigation of nonlinear kinetics and time-dependent phenomena, which include drug accumulation, additional impact due to the formation of inhibitory metabolite(s), and effect of dosing regimen. Commercial software packages are available that allow incorporation of literature data on human physiology, changes in special populations and disease states, and drug effects on physiologic rates [e.g., Simcyp (Certara), Phoenix (Certara), GastroPlus (Simulations Plus), PKSim (Bayer)]. PBPK modeling requires the greatest degree of parameterization based on both in vitro and in vivo data. Key victim drug parameters required for PBPK model development include volume of distribution (V_{dss}) and clearance (CL) (Supplemental Table 4S). Although PBPK approaches may be applied at the stage of discovery or development, it is most powerful in later stages when more data become available.

Model Application: “When and What”

Model selection must always be issue driven and based on particular development stage and available data. During early clinical development (i.e., clinical candidate selection), predictions are primarily used to improve mechanistic understanding and support internal decision making. At this stage the understanding of victim drug disposition is mainly based on preclinical and/or in vitro data, which are generally limited. Applications of modeling at this stage include support of prediction of clinical DDI risk, DDI study design, and victim drug dose selection (especially critical for a victim drug that has narrow safety window). In these situations a simplified model may be more suitable. In situations where more definitive in vitro ADME data and Phase I clinical PK data are available, PBPK simulation is applied. Retrospective model simulation of in vivo data can be used to estimate $f_{m,CYP}$ and the impact of alternative trial design on outcomes. In later stages of development when data from human mass-balance and DDI studies with a specific inhibitors (e.g., itraconazole for the inhibition of CYP3A4 for drugs metabolized by this enzymatic pathway) become available, the model is further refined and used for simulation of victim DDIs with other inhibitor(s) or inducer(s) of the same pathway, or inhibitors of a minor metabolic pathway, victim drug PK in special populations (e.g., hepatic or renal impaired), dose selection, influence labeling, or justifying of waivers for additional DDI studies.

Building Confidence in Model Predictions

Several approaches have been developed to build confidence in and ensure mechanistic relevance of the simulation results, which will lead to increased impact of modeling and simulation efforts. These approaches

include verification of assumptions, sensitivity analysis, and assessment of variability. The level of model verification or validation will depend upon the stage of development and its impact on critical decision making.

Verification of Assumptions. Although many model parameters may be experimentally determined, assumptions must often be made about the translatability of in vitro data to in vivo DDI. Assumptions must always be evaluated, particularly in scenarios when complicated disposition mechanisms are expected. Investigation of assumptions to which the model is particularly sensitive may help explain disconnects between in vitro data and in vivo DDI (e.g., complex DDI, poor IVIVE, lack of quantitative prediction of non-P450 and transporter pathways, nonlinear PK, inhibitory metabolites, altered PK in disease state).

Sensitivity Analysis. Sensitivity analysis is often employed to assess the mechanistic relevance of the model and to identify gaps in current mechanistic understanding. In this approach model, parameters that have the greatest impact on the simulation output are identified as requiring increased scrutiny. Sensitivity analyses can lead to the design and execution of additional supporting in vitro or in vivo studies. For victim drug characterization, $f_{m,CYP}$ will be especially important, and sensitivity analysis on this parameter is strongly recommended. Consideration of $F_{G,inhibited}/F_G$ for NMEs that undergo substantial intestinal metabolism (e.g., CYP3A4- metabolized drugs such as midazolam, cyclosporine, tacrolimus, felodipine, simvastatin, atorvastatin, verapamil, and nifedipine) is important in DDI risk assessments. F_G values are usually not determined but predicted via various available gut models incorporated in commercial software such as Gastroplus and Simcyp. The Q_{gut} model (Yang et al., 2007) is a simple and more commonly used model where the parameter $f_{u,gut}$ (fraction unbound in gut) is one of the key determinants of F_G . Because $f_{u,gut}$ cannot be experimentally measured in vitro or in vivo, sensitivity analysis of estimated $f_{u,gut}$ on exposure change of a victim drug is often assessed and is strongly recommended. The sensitivity analysis may inform the impact of variability of these parameters on predicted victim DDI with different perpetrators.

Assessment of Variability. Variability in both observed and simulated data are required to ensure the relevance of model outputs. An essential component of model verification is a comparison of simulated and observed variability around pharmacokinetic parameters of interest. Variability associated with $f_{m,CYP}$ of a victim drug could result in higher predicted PK and DDI variability between individuals, especially in the case of DDI prediction. Sources of variability include intersubject differences in relative P450 abundance and, in the case of some isoforms, polymorphic gene expression.

Case Examples. The utility of modeling and simulation in victim DDI prediction is best illustrated through the presentation of case examples that highlight approaches used at various phases of drug development. Several case examples have been summarized (Table 7) to illustrate some of the questions typically addressed by modeling in the course of drug development. A typical case example has been described in greater detail to demonstrate how to use and optimize predictive models. The data required to support model development, appropriate assumptions, and the manner in which these are combined to impact development programs are also discussed.

Example 1: What is the DDI Risk for a Compound that is Predominantly Metabolized by CYP3A4 in Vitro? An early development compound was found to be predominately metabolized by CYP3A4 in vitro. Based on preliminary preclinical metabolite identification, a significant contribution of non-P450 (phase 2) metabolism was suspected. This compound was highly cleared both in vitro and in preclinical animal models. Before initiation of modeling, additional data were requested, including in vitro phase 2 metabolism, in vitro permeability, human mass-balance information (fraction absorbed, elimination pathways), and in vitro phenotyping in human liver

TABLE 7
Case examples illustrating the predictive utility of modeling and simulation approaches

	Development Stage & Question	Data Available	Modeling Approach	Outcome and impact	comments
Compound-1	Clinical development. <i>Can PBPK modeling inform the optimal ketoconazole drug interaction study design for a drug with an extended t_{1/2}?</i>	<ul style="list-style-type: none"> • In vitro metabolic phenotyping • Human mass balance 	<ul style="list-style-type: none"> • PBPK model • CL based on in vitro CL_{int} 	<ul style="list-style-type: none"> • Refined mechanistic understanding of disposition • Supported improved clinical study design for subsequent studies 	Shardlow et al., 2013
		<ul style="list-style-type: none"> • Phase I human PK • DDI study with ketoconazole 	<ul style="list-style-type: none"> • F_a, k_a, and V_{dss} based on in vivo data • Retrospective simulation of Comp-1 –ketoconazole DDI was used to build confidence in the model • Simulations were used to compare alternative dosing regimens 		
Compound -2	Clinical development. <i>What is the DDI risk for compound that is predominantly metabolized by CYP3A4 in vitro?</i>	<ul style="list-style-type: none"> • Metabolism in recombinant system 	<ul style="list-style-type: none"> • PBPK 	<ul style="list-style-type: none"> • Provided high confidence in ability of model to accurately predict DDI with potent CYP3A4 inducers • Supported additional simulations of DDI with moderate CYP3A4 inhibitors 	In-house example.
		<ul style="list-style-type: none"> • In vitro metabolic phenotyping 	<ul style="list-style-type: none"> • CL based on IVIVE and in vitro phenotyping 		J & J (Janssen R&D in-house example)
		<ul style="list-style-type: none"> • Metabolism in human hepatocytes • Human mass balance • DDI study with ketoconazole • Human mass balance 	<ul style="list-style-type: none"> • Clinical PK data in healthy subjects and in ketoconazole DDI trial used to verify model relevance • Sensitivity analysis conducted on f_{u,gut} 		
Compound -3	Discovery to early development <i>Can DDI of CYP3A victim drug with strong and moderate CYP3A inhibitor be predicted using in vitro data and static model?</i>	<ul style="list-style-type: none"> • Reaction phenotyping 	<ul style="list-style-type: none"> • Static model • Measured in vitro f_{ACYP} and fm_{CYP} linked to represent the factor of (1/(1+ I/K_i)) 	<ul style="list-style-type: none"> • Allowed DDI prediction when PBPK model and extensive in vitro and in vivo data were not available 	Lu et al., 2007, 2010
		<ul style="list-style-type: none"> • P450 activity remaining (f_{ACYP}) in the presence of ketoconazole or fluconazole (human hepatocyte suspended in human plasma) 	<ul style="list-style-type: none"> • f_{ACYP} corrected by comparing extracellular inhibitor concentration (determined in vitro) with in vivo C_{max} • Calculated steady-state DDIs compared with clinical observations 		
Compound -4	Clinical development <i>What is the risk of DDI for a compound primarily metabolized by CYP3A4 in vitro? Can PBPK model explain the observed clinical data and make predictions of the outcome of novel scenarios (DDI and pediatrics)?</i>	<ul style="list-style-type: none"> • Metabolic phenotyping (HLM) 	<ul style="list-style-type: none"> • PBPK model 	<ul style="list-style-type: none"> • Improved mechanistic understanding of the observed DDIs • Suggested previously unexpected role of efflux transport in fraction absorbed—which was subsequently verified by an in vitro study 	In-house example.
		<ul style="list-style-type: none"> • Rat QWBA 	<ul style="list-style-type: none"> • CL based on in vivo CL_{IV} and retrograde extrapolation of in vivo CL_{int} 		J & J (Janssen R&D in-house example)
		<ul style="list-style-type: none"> • Human mass balance study data available • Phase I human PK • DDI studies (with three inhibitors) 	<ul style="list-style-type: none"> • Predicted V_{ss} consistent with intravenous dose data and rat QWBA • Model was verified using observed clinical PK data from single, multiple-dose and three clinical DDI studies 	<ul style="list-style-type: none"> • Supported design of clinical pediatric study 	

(continued)

TABLE 7—Continued

	Development Stage & Question	Data Available	Modeling Approach	Outcome and impact	comments
Compound -5	Clinical Development <i>What is the DDI effect of ketoconazole and rifampin on comp-4 after a single dose and at steady state, respectively, in clinical trials?</i>	<ul style="list-style-type: none"> • In vitro metabolism (HLM and hepatocytes) • In vitro phenotyping (HLM and rhCYP) • Rat ADME data • Clinical DDI with rifampin or ketoconazole 	<ul style="list-style-type: none"> • PBPK model • CL based on clinical data • V_{dss} predicted from physiochemical data • Sensitivity analysis for $f_{u,gut}$ conducted • Model verified with clinical DDI data 	<ul style="list-style-type: none"> • Guided selection of single-dose over proposed multiple-dose study to maximize DDI potential 	Novartis in-house example
Compound -6	Before FIH <i>Should PMs of CYP2C9 be excluded from FIH trials?</i>	<ul style="list-style-type: none"> • In vitro metabolism (HLM and hepatocytes—across species) • In vitro phenotyping (HLM and rhCYP) • rhCYP2C9*1, *2, *3 kinetics • Rat ADME data 	<ul style="list-style-type: none"> • PBPK model • CL based on rhCYP2C9*1, *2, *3 kinetic data 	<ul style="list-style-type: none"> • Exclusion of CYP2C9*3 genotype in FIH trials due to safety risk for the compound in this population 	Novartis in-house example

^aHistorically, ketoconazole was preferred as a clinically administered potent inhibitor of CYP3A4. However, a recent FDA memo FDA Drug Safety Communication: FDA limits usage of Nizoral (ketoconazole) oral tablets because of potentially fatal liver injury and risk of drug interactions and adrenal gland problems. <http://www.fda.gov/Drugs/DrugSafety/ucm362415.htm> and industry white paper (PMID: 26044116) have proposed that alternative inhibitors be administered in clinical DDI studies

PBPK, physiologically based pharmacokinetic; PK, pharmacokinetics; P450, cytochrome P450; F_A , fraction absorbed; k_a , absorption rate constant; CL, clearance; V_{dss} , steady-state volume of distribution; CL_{int} , intrinsic clearance; IVIVE, in vitro-in vivo extrapolation; f_m , fraction metabolized; f_A , fraction activity remaining; HLM, human liver microsomes; $f_{u,gut}$, fraction unbound enterocytes; rh, recombinant human; QWBA, quantitative whole body autoradiography; FIH, first in human; ADME, absorption distribution metabolism excretion; PM, poor metabolizer.

microsomes. Using both in vitro and in vivo data, a PBPK model was developed to predict the DDI risk. The PBPK model incorporated a mechanistic absorption model and tissue distribution based on physiochemical data. Compound elimination was linked to enzyme abundance and based on in vitro intrinsic clearance measured in human hepatocytes and $f_{m,CYP3A4}$ predicted from in vitro phenotyping in human liver microsomes. A parallel tube model was selected to predict in vivo clearance because of the high intrinsic clearance observed in vitro and in preclinical species. The model simulations were subsequently verified using clinical data in healthy subjects and in a ketoconazole DDI trial. In addition, a sensitivity analysis was completed to investigate the effect of $f_{u,gut}$ on baseline and inhibited compound PK profiles.

The simulated DDI with the potent CYP3A4 inhibitor ketoconazole was consistent with the observed clinical outcome. Based on the confidence building approaches of model verification and sensitivity analysis the model was used to simulate additional potential DDIs with other inhibitors. The accurate prediction of the observed inhibition DDI provided high confidence in the ability of the model to accurately predict DDI with potent CYP3A4 inducers.

Recommended Strategy in Modeling and Simulation

Modeling and simulation is a valuable tool in predicting victim DDI throughout every stage of drug development. In each stage, fit-for-purpose strategies should be based on the issue to be addressed. During early development stages, modeling and simulation will support internal decision making by leveraging mechanistic understanding when only preclinical and in vitro data are available. When data are limited, a more simplified modeling approach is advised. At later stages, modeling aids study design, dose selection, labeling, and justification of delay/waiver of clinical victim DDI studies. As more data become available more complex models may be developed. For initial metabolic victim DDI risk assessments, a qualitative understanding of contribution of metabolism toward overall clearance of a NME ($f_{CL,metabolism}$) and fractional contribution of a DME toward overall metabolism (f_m) is necessary. Typically some human PK data (after single dose with reasonable

expectation of linear PK or after multiple dose if not) will be necessary for more quantitative prediction of in vivo victim DDI.

PBPK modeling requires the greatest amount of data. However, a PBPK approach allows the greatest potential for “what-if” scenario analysis and simulations leading to improved mechanistic understanding. Specifically, PBPK-based predictions allow analyses of how $f_{m,CYP}$ characterization may impact victim DDI prediction. This information may then be used to inform exclusion criteria (i.e., if a polymorphic enzyme involved), victim drug dose selection, sampling schedule, and optimal chemical inhibitor.

Sensitivity analysis is strongly recommended in all situations but especially when data are incomplete or uncertain (Zhao et al., 2012; Jones et al., 2015). This assessment can help identify to what extent the model can tolerate uncertainty and the range of uncertainties, as well as indicate additional experimental data to be generated and/or confirmed. For victim drug DDI prediction, the fraction metabolized (f_m) and fraction escaping first-pass metabolism in the gut (F_G) are common parameters that need to be considered for sensitivity analysis. The worst case scenario from sensitivity analysis may be included in the risk assessment. It is essential that confidence and acceptance/cut-off criteria be well defined at the beginning of model development to ensure a well-established metric for comparing model performance.

General Perspectives and Strategic Recommendations

Because metabolism remains to be the predominant clearance pathway for the majority of small molecule drugs, it is important to accurately evaluate the metabolic victim DDI liability of a NME. Two key determinants of a metabolic victim DDI magnitude are $f_{CL,metabolism}$ and f_m , where high values of $f_{CL,metabolism} \times f_m$ can have a drastic effect on a victim NME exposure, resulting in undesirable clinical outcomes. In the majority of the cases a good understanding of $f_{CL,metabolism}$ and f_m may be obtained from quantitative human ADME and DDI studies, respectively. The determination of the routes of clearance, including $f_{CL,metabolism}$, is usually conducted in the ^{14}C -radiolabeled human ADME study, whereas the determination of f_m is usually conducted in

clinical DDI studies with standardized inhibitors or studies in genotyped populations. These definitive studies are most commonly done in the later stages of clinical development (Phase II or Phase III); however, this information is valuable earlier in clinical development, such as when studies are done in patients on various concomitant medications. It is particularly challenging to accurately predict contribution of metabolism toward human clearance pathways ($f_{CL,metabolism} \times f_m$) quantitatively before data from the definitive ^{14}C -ADME and clinical DDI study are available, and this area remains a focus of continued research. There is a common set of in vitro and preclinical in vivo studies that pharmaceutical companies rely on through various stages of drug development (Table 8) to obtain sufficient data to provide the best estimate of $f_{CL,metabolism} \times f_m$ before running large clinical trials.

At early stages when no human data are available, reliance is made on the knowledge gained in preclinical models and in vitro systems to get preliminary estimates of $f_{CL,metabolism}$ and f_m . Assessments are made to understand whether a NME is cleared primarily by metabolism or excretion in animals, because it has been commonly observed that if a NME is primarily cleared by metabolism in animals or renally via passive filtration, it follows a similar qualitative trend in humans. In parallel, establishment of IVIVC of metabolic pathways in multiple preclinical species also gives researchers confidence in predicting metabolic pathways in humans from in vitro metabolism studies conducted with human-derived matrices. Metabolism studies in in vitro human-derived systems (usually HLM and/or hepatocytes) are conducted to understand the primary metabolic pathways as well as primary DMEs involved in these pathways.

TABLE 8
Studies commonly done through the course of drug development to estimate f_{CL} and f_m

Stage	Study Type	Information Gathered	Pros and Cons
Pre-FIH/ Preclinical Development	<ul style="list-style-type: none"> • Preclinical Species PK/ADME (in vivo) • Preclinical Species CL_{int} + metabolite profiling (in vitro) 	<ul style="list-style-type: none"> • NME cleared via metabolism or excretion in animals • Major metabolic pathways in animals • Metabolic pathway in vitro similar to that in vivo in animals 	Pros: <ul style="list-style-type: none"> • Confidence from IVIVC in animals Cons: <ul style="list-style-type: none"> • Human routes of metabolism maybe quite different from animals
	<ul style="list-style-type: none"> • Human CL_{int} + metabolite profiling (in vitro) • P450 and other DME identification (in vitro human matrices) 	<ul style="list-style-type: none"> • Major metabolic pathways in humans in vitro • Relative contribution of oxidation versus Conjugation • Relative contribution of P450 enzymes • Metabolism involve single or multiple enzymes • f_m of P450 or other major enzyme involved (in vitro) • First look into major metabolic pathways in humans (commonly in plasma and urine; sometimes in bile) • Crude estimate of $f_{CL,renal}$ (if NME substantially cleared renally); quantitative metabolite information in plasma and urine in certain cases (e.g., with quantitative NMR) • PK linearity (understand saturable processes) 	Pros: <ul style="list-style-type: none"> • Preliminary estimates of P450-mediated DDI risk Cons: <ul style="list-style-type: none"> • In vitro pathways may not be major pathways in vivo
FIH (SAD /MAD)	<ul style="list-style-type: none"> • Detailed reaction phenotyping (in vitro) • Metabolite profiling in plasma and urine in human usually available; in certain cases in bile (Entero-Test) 		Pros: <ul style="list-style-type: none"> • Usually metabolite monitoring in in vitro phenotyping studies • First look in humans—are metabolic pathways similar in vivo versus in vitro? Any human unique pathway not captured in vitro Cons: <ul style="list-style-type: none"> • All qualitative estimates; quantitative estimate in plasma and urine possible if using quantitative NMR which allows minimum estimate of f_m • Missing metabolites info in feces
Definitive Human Studies	Human radiolabel ADME study	<ul style="list-style-type: none"> • Route of CL in humans (f_{CL}) • Quantitative metabolite profiling 	Pros: <ul style="list-style-type: none"> • $f_{CL,metabolism} + f_{CL,renal} + f_{CL,biliary}$ quantitatively determined • Metabolites determined in feces • Learn if f_{CL} pathways predicted earlier is consistent with observed human f_{CL} pathways Cons: <ul style="list-style-type: none"> • $f_{CL,biliary}$ challenging after oral dose when substantial unchanged NME in feces • In case of poor mass balance f_{CL} pathways still not well defined
	DDI with potent and selective enzyme inhibitor	<ul style="list-style-type: none"> • Contribution of a DME toward overall NME metabolic clearance (f_m) (assumption that inhibitor completely inhibits only enzyme of interest and for orally administered drugs, maximal intestinal inhibition is achieved) 	Pros: <ul style="list-style-type: none"> • f_m quantitatively determined Cons: <ul style="list-style-type: none"> • Wide range of f_m values when variability of PK, which can have significant impact on DDI magnitude
	PK in genotyped population	<ul style="list-style-type: none"> • Contribution of a polymorphic drug metabolizing enzyme toward overall NME metabolic clearance (f_m) (assumption that in null phenotype (PM), polymorphic enzyme pathway is completely absent) 	Pros: <ul style="list-style-type: none"> • f_m quantitatively determined Cons: <ul style="list-style-type: none"> • Inaccurate f_m if residual activity of polymorphic enzyme in PM

FIH, first in human; PK, pharmacokinetics; NME, new molecular entity; ADME, absorption distribution metabolism excretion; CL_{int} , intrinsic clearance; CL , clearance; IVIVC, in vitro-in vivo correlation; P450, cytochrome P450; DDI, drug-drug interactions; f_{CL} , fraction of clearance; f_m , fraction metabolized; NMR, nuclear magnetic resonance; PM, poor metabolizer.

Complementing the $f_{CL,metabolism}$ information obtained in animals with f_m assessments in in vitro human systems may provide an early estimate of the importance of metabolism and various metabolic clearance pathways (e.g., oxidative or conjugation, P450 versus non-CYP-mediated DDI risk) in humans. This preliminary information, although qualitative, is informative for victim DDI risk assessment and setting of inclusion/exclusion criteria before first dose in humans, especially when the FIH studies are conducted in patients. During these pre-FIH assessments, researchers should be cognizant of the limitations of assumptions made at this stage, such as: 1) possibility of differences in $f_{CL,metabolism}$ in humans compared with animals and 2) in vitro metabolic pathways in human-derived matrices may not be reflective of those in vivo. It is also not recommended to extrapolate animal metabolic pathways to predict quantitatively human metabolic pathways, because the extent of metabolism, metabolic enzymes, and pathways in humans have been observed to be very distinct from those in animals (Martignoni et al., 2006).

Confidence in in vitro determination of f_m of P450 and non-P450 DMEs has grown tremendously with the advancement of research in the area. In the majority of cases, researchers are able to accurately identify the enzyme family primarily involved in NME metabolism, although a quantitative measure of f_m for isoforms of several non-P450 DMEs is still absent, as summarized in Table 6. Primary reasons include a combination of factors such as the lack of specific probe substrates, selective chemical inhibitors, and knowledge of extrahepatic tissue abundance and activity for a majority of the non-P450 enzymes. However, considering the reported incidence and magnitude of clinical DDIs in recent years, the vast majority of which are P450 mediated, the inability to determine quantitatively f_m via non-P450 pathways may have lower impact. On the other hand, it is still crucial to be able to accurately identify the overall class of non-P450 enzyme family, because involvement of non-P450 enzymes suggests a lower risk of victim DDI potential via a P450-mediated pathway, i.e., reduces the victim DDI risk due to involvement of non-P450 enzymes. As more drugs that are primarily metabolized by non-P450 enzymes are developed, understanding the clinical risk of DDI due to these enzymes may also emerge.

Information gathered from metabolite profiling, routinely conducted in plasma and urine in FIH studies allows investigators to assess the presence of any human-specific routes of metabolism not previously identified in preclinical studies or in vitro human matrices. It is also possible to get qualitative information into metabolic pathways of orally administered drugs in bile with the use of recent techniques such as Entero-Test (Guiney et al., 2011; Bloomer et al., 2013), although this has not yet been widely adopted. Identification of human-specific metabolic pathways along with any saturable pathways (as indicated by nonlinear PK) guides further refinement of victim DDI potential at FIH stage. Because typically no mass balance is accounted for in FIH studies (fecal samples are typically not collected for analyses), assessment of metabolic pathways to overall NME clearance ($f_{CL,metabolism} \times f_m$) is still qualitative. Availability of advanced techniques such as quantitative NMR has made it possible to reliably obtain quantitative estimates of metabolic pathways in plasma and urine. In such cases it may be possible to estimate minimum f_m from the assessment of metabolites in plasma and urine. Conduct of microtracer intravenous ^{14}C -ADME has also risen in recent years, with the primary goal of obtaining more accurate insight into the absolute bioavailability/PK, mass balance, and routes of clearance earlier in clinical development.

Information from a definitive human ^{14}C -ADME study is used to confirm and refine f_{CL} (and $f_{CL,metabolism}$) and metabolic pathway data derived from earlier in vitro and in vivo studies. Designated clinical DDI studies such as those with a potent P450 inhibitor or those conducted in genotyped population are valuable in further refining the contributions of P450 and non-P450 enzymes ($f_{m,CYP}$ and $f_{m,non-CYP}$). Information

from these definitive human studies can then be incorporated into planning additional victim DDI trials and drug labeling of a NME. Uncertainties may be encountered even in these definitive studies, because of the following: 1) challenge in estimating $f_{CL,biliary}$ when substantial unchanged NME is recovered in feces, 2) poor mass balance resulting in inability to estimate f_{CL} (and $f_{CL,metabolism}$) pathways, 3) wide range in f_m values in clinical victim DDI studies due to variability of PK of a victim NME in humans. Inaccurate or variable f_m may also result from PK studies conducted in genotyped population if a polymorphic enzyme has differential residual activity in poor metabolizers as opposed to the assumption of null phenotype. Case by case consideration of issues as high first pass intestinal extraction ($\leq 50\% F_G$) and inhibition of parallel metabolic pathways of the victim NME is recommended, because magnitude of DDI may be very sensitive to inaccuracies in estimating the $F_{G,inhibited}/F_G$ ratio and parallel multiple metabolic pathways, respectively. It is crucial to understand the underlying reason, effect, and extent of variability on the magnitude of a victim drug's DDI. Modeling and simulation can provide significant impact in terms of improving our understanding of inter- and intraindividual PK variability, supporting optimal victim DDI study design and leading hypothesis-testing exercises. When properly applied, modeling and simulation, coupled with relevant sensitivity analyses and model validation, help to build confidence to support the overall clinical strategy, including justification of delay or waiver of additional DDI studies.

A thorough understanding of the contribution of various metabolic pathways to overall drug clearance in humans allows investigators to make informed decisions for metabolism-based victim DDI risk assessment with the goal of ensuring the safety of healthy volunteers and/or patients throughout all stages of clinical development. Whether leveraging metabolism-based victim DDI predictions for internal decision making or impacting clinical DDI study planning and regulatory responses, factors such as: 1) whether a NME has a narrow therapeutic index that may compromise safety in either healthy volunteers or patient populations; 2) common comedications used by the population and whether the major clearance pathway of the NME can be substantially affected by such comedications; 3) whether a NME will be administered to special populations such as those with hepatic impairment, renal impairment, or pediatrics; and 4) experience with an earlier drug candidate of the same chemical series should be adequately considered.

Acknowledgments

The working group acknowledges valuable advice from Dr. Donald J. Tweedie and Dr. R. Scott Obach during manuscript preparation.

Authorship Contributions

Participated in research design: Bohnert, Patel, Templeton, Chen, Lu, Lai, Leung, Tse, Einolf, Wang, Sinz, Stearns, Walsky, Geng, Sudsakorn, Moore, He, Wahlstrom, Keirns, Narayanan, Lang, and Yang.

Performed data analysis: Bohnert, Patel, Templeton, Chen, Lu, Lai, Leung, Tse, Einolf, Wang, Sinz, Stearns, Walsky, Geng, Sudsakorn, Moore, He, Wahlstrom, Keirns, Narayanan, Lang, and Yang.

Wrote or contributed to the writing of the manuscript: Bohnert, Patel, Templeton, Chen, Lu, Lai, Leung, Tse, Einolf, Wang, Sinz, Stearns, Walsky, Geng, Sudsakorn, Moore, He, Wahlstrom, Keirns, Narayanan, Lang, and Yang.

References

- Ahokas JT, Nicholls FA, Ravenscroft PJ, and Emmerson BT (1985) Inhibition of purified rat liver glutathione S-transferase isozymes by diuretic drugs. *Biochem Pharmacol* 34:2157–2161.
- Awasthi YC, Sharma R, and Singhal SS (1994) Human glutathione S-transferases. *Int J Biochem* 26:295–308.
- Barr JT, Choughule K, and Jones JP (2014a) Enzyme Kinetics, Inhibition, and Regioselectivity of Aldehyde Oxidase, in *Enzyme Kinetics in Drug Metabolism Fundamentals and Applications* (Nagar S, Argikar U, and Tweedie D eds) pp 187–201, Humana Press, New York.

- Barr JT, Choughule KV, Nepal S, Wong T, Chaudhry AS, Joswig-Jones CA, Zientek M, Strom SC, Schuetz EG, and Thummel KE, et al. (2014b) Why do most human liver cytosol preparations lack xanthine oxidase activity? *Drug Metab Dispos* **42**:695–699.
- Barr JT and Jones JP (2011) Inhibition of human liver aldehyde oxidase: implications for potential drug-drug interactions. *Drug Metab Dispos* **39**:2381–2386.
- Barr JT and Jones JP (2013) Evidence for substrate-dependent inhibition profiles for human liver aldehyde oxidase. *Drug Metab Dispos* **41**:24–29.
- Barr JT, Jones JP, Joswig-Jones CA, and Rock DA (2013) Absolute quantification of aldehyde oxidase protein in human liver using liquid chromatography-tandem mass spectrometry. *Mol Pharm* **10**:3842–3849.
- Beedham C (1985) Molybdenum hydroxylases as drug-metabolizing enzymes. *Drug Metab Rev* **16**:119–156.
- Bernard O and Guillemette C (2004) The main role of UGT1A9 in the hepatic metabolism of mycophenolic acid and the effects of naturally occurring variants. *Drug Metab Dispos* **32**:775–778.
- Bichlmaier I, Kerkela M, Joshi T, Siiskonen A, Rüffer T, Lang H, Finel M, and Yli-Kauhalauma J (2007) Potent inhibitors of the human UDP-glucuronosyltransferase 2B7 derived from the sesquiterpenoid alcohol longifolol. *ChemMedChem* **2**:881–889.
- Björnsson TD, Callaghan JT, Einolf HJ, Fischer V, Gan L, Grimm S, Kao J, King SP, Miwa G, and Ni L, et al.; Pharmaceutical Research and Manufacturers of America (PhRMA) Drug Metabolism/Clinical Pharmacology Technical Working Group; ; FDA Center for Drug Evaluation and Research (CDER) (2003) The conduct of *in vitro* and *in vivo* drug-drug interaction studies: a Pharmaceutical Research and Manufacturers of America (PhRMA) perspective. *Drug Metab Dispos* **31**:815–832.
- Bloomer JC, Nash M, Webb A, Miller BE, Lazear AL, Beaumont C, and Guiney WJ (2013) Assessment of potential drug interactions by characterization of human drug metabolism pathways using non-invasive bile sampling. *Br J Clin Pharmacol* **75**:488–496.
- Brown HS, Galetin A, Hallifax D, and Houston JB (2006) Prediction of *in vivo* drug-drug interactions from *in vitro* data: factors affecting prototypic drug-drug interactions involving CYP2C9, CYP2D6 and CYP3A4. *Clin Pharmacokinet* **45**:1035–1050.
- Cashman JR (1995) Structural and catalytic properties of the mammalian flavin-containing monooxygenase. *Chem Res Toxicol* **8**:166–181.
- Cashman JR (2008) Role of flavin-containing monooxygenase in drug development. *Expert Opin Drug Metab Dispos* **4**:1507–1521.
- Cashman JR (2012) Flavin-containing Monooxygenases in Encyclopedia of Drug Metabolism and Interactions, (Lyubimov A, ed) Wiley, New York.
- Chan TS, Yu H, Moore A, Khetani SR, and Tweedie D (2013) Meeting the challenge of predicting hepatic clearance of compounds slowly metabolized by cytochrome P450 using a novel hepatocyte model, HepatoPac. *Drug Metab Dispos* **41**:2024–2032.
- Chen Q, Ngui JS, Doss GA, Wang RW, Cai X, DiNinno FP, Blizzard TA, Hammond ML, Stearns RA, and Evans DC, et al. (2002) Cytochrome P450 3A4-mediated bioactivation of raloxifene: irreversible enzyme inhibition and thiol adduct formation. *Chem Res Toxicol* **15**:907–914.
- Cheng PY and Morgan ET (2001) Hepatic cytochrome P450 regulation in disease states. *Curr Drug Metab* **2**:165–183.
- Chiu TH, Chen JC, Chen LD, Lee JH, and Chung JG (2004) Gypenosides inhibited N-acetylation of 2-aminofluorene, N-acetyltransferase gene expression and DNA adduct formation in human cervix epithelioid carcinoma cells (HeLa). *Res Commun Mol Pathol Pharmacol* **115**:116:157–174.
- Choughule KV, Barr JT, and Jones JP (2013) Evaluation of rhesus monkey and guinea pig hepatic cytosol fractions as models for human aldehyde oxidase. *Drug Metab Dispos* **41**:1852–1858.
- Clarke SE, Harrell AW, and Chenery RJ (1995) Role of aldehyde oxidase in the *in vitro* conversion of famciclovir to penciclovir in human liver. *Drug Metab Dispos* **23**:251–254.
- Collins C, Levy R, Ragueneau-Majlessi I, and Hachad H (2006) Prediction of maximum exposure in poor metabolizers following inhibition of nonpolymorphic pathways. *Curr Drug Metab* **7**:295–299.
- Court MH (2005) Isoform-selective probe substrates for *in vitro* studies of human UDP-glucuronosyltransferases. *Methods Enzymol* **400**:104–116.
- Court MH (2014) Phenotyping UDP-Glucuronosyltransferases (UGTs) involved in human drug metabolism: An update, in *Methods in Pharmacology and Toxicology: Optimization in Drug Discovery: In Vitro Methods* (Caldwell GW and Yan Y eds) pp 117–136, Humana Press, New York.
- Cubitt HE, Houston JB, and Galetin A (2011) Prediction of human drug clearance by multiple metabolic pathways: integration of hepatic and intestinal microsomal and cytosolic data. *Drug Metab Dispos* **39**:864–873.
- Dahal UP, Jones JP, Davis JA, and Rock DA (2011) Small molecule quantification by liquid chromatography-mass spectrometry for metabolites of drugs and drug candidates. *Drug Metab Dispos* **39**:2355–2360.
- Dear GJ, Beaumont C, Roberts A, Squillaci B, Thomas S, Nash M, and Fraser D (2011) Approaches for the rapid identification of drug metabolites in early clinical studies. *Bioanalysis* **3**:197–213.
- Di L, Atkinson K, Orozco CC, Funk C, Zhang H, McDonald TS, Tan B, Lin J, Chang C, and Obach RS (2013) *In vitro-in vivo* correlation for low-clearance compounds using hepatocyte relay method. *Drug Metab Dispos* **41**:2018–2023.
- Eliot GB (1988) *The Purine Path to Chemotherapy*. Nobel Lecture, Burroughs Wellcome Co., Research Triangle Park, NC.
- Erickson DA, Hollfelder S, Tenge J, Gohdes M, Burkhardt JJ, and Krieter PA (2007) *In vitro* metabolism of the analgesic bupivacaine in the mouse, rat, monkey, and human. *Drug Metab Dispos* **35**:2232–2241.
- Fahmi OA, Maurer TS, Kish M, Cardenas E, Boldt S, and Nettleton D (2008) A combined model for predicting CYP3A4 clinical net drug-drug interaction based on CYP3A4 inhibition, inactivation, and induction determined *in vitro*. *Drug Metab Dispos* **36**:1698–1708.
- Fahmi OA and Ripp SL (2010) Evaluation of models for predicting drug-drug interactions due to induction. *Expert Opin Drug Metab Toxicol* **6**:1399–1416.
- Fallon JK, Neubert H, Goosen TC, and Smith PC (2013a) Targeted precise quantification of 12 human recombinant uridine-diphosphate glucuronosyl transferase 1A and 2B isoforms using nano-ultra-high-performance liquid chromatography-tandem mass spectrometry with selected reaction monitoring. *Drug Metab Dispos* **41**:2076–2080.
- Fallon JK, Neubert H, Hyland R, Goosen TC, and Smith PC (2013b) Targeted quantitative proteomics for the analysis of 14 UGT1As and -2Bs in human liver using NanoUPLC-MS/MS with selected reaction monitoring. *J Proteome Res* **12**:4402–4413.
- Fisar Z, Hroudová J, and Raboch J. (2010) Inhibition of monoamine oxidase activity by antidepressants and mood stabilizers. *Neuro Endocrinol Lett* **31**:645–656.
- Fu C, Di L, Han X, Soderstrom C, Snyder M, Troutman MD, Obach RS, and Zhang H (2013) Aldehyde oxidase 1 (AOX1) in human liver cytosols: quantitative characterization of AOX1 expression level and activity relationship. *Drug Metab Dispos* **41**:1797–1804.
- Fukami T, Takahashi S, Nakagawa N, Manuchi T, Nakajima M, and Yokoi T (2010) *In vitro* evaluation of inhibitory effects of anti-diabetic and antihyperlipidemic drugs on human carboxylesterase activities. *Drug Metab Dispos* **38**:2173–2178.
- Galetin A, Gertz M, and Houston JB (2008) Potential role of intestinal first-pass metabolism in the prediction of drug-drug interactions. *Expert Opin Drug Metab Toxicol* **4**:909–922.
- Galetin A, Hinton LK, Burt H, Obach RS, and Houston JB (2007) Maximal inhibition of intestinal first-pass metabolism as a pragmatic indicator of intestinal contribution to the drug-drug interactions for CYP3A4 cleared drugs. *Curr Drug Metab* **8**:685–693.
- Geary RB, Day AS, Barclay ML, Leong RWL, and Sparrow MP (2010) Azathioprine and allopurinol: A two-edged interaction. *J Gastroenterol Hepatol* **25**:653–655.
- Geha RM, Rebrin I, Chen K, and Shih JC (2001) Substrate and inhibitor specificities for human monoamine oxidase A and B are influenced by a single amino acid. *J Biol Chem* **276**:9877–9882.
- Gertz M, Houston JB, and Galetin A (2011) Physiologically based pharmacokinetic modeling of intestinal first-pass metabolism of CYP3A substrates with high intestinal extraction. *Drug Metab Dispos* **39**:1633–1642.
- Ghibellini G, Leslie EM, and Brouwer KL (2006) Methods to evaluate biliary excretion of drugs in humans: an updated review. *Mol Pharm* **3**:198–211.
- Gibson CR, Lu P, Maciulek C, Wudarski C, Barter Z, Rowland-Yeo K, Stroh M, Lai E, and Nicoll-Griffith DA (2013) Using human recombinant UDP-glucuronosyltransferase isoforms and a relative activity factor approach to model total body clearance of laropiprant (MK-0524) in humans. *Xenobiotica* **43**:1027–1036.
- Ginsberg G, Smolenski S, Hattis D, Guyton KZ, Johns DO, and Sonawane B (2009) Genetic Polymorphism in Glutathione Transferases (GST): Population distribution of GSTM1, T1, and P1 conjugating activity. *J Toxicol Environ Health B Crit Rev* **12**:389–439.
- Griffin SJ and Houston JB (2004) Comparison of fresh and cryopreserved rat hepatocyte suspensions for the prediction of *in vitro* intrinsic clearance. *Drug Metab Dispos* **32**:552–558.
- Guiney WJ, Beaumont C, Thomas SR, Robertson DC, McHugh SM, Koch A, and Richards D (2011) Use of Entero-Test, a simple approach for non-invasive clinical evaluation of the biliary disposition of drugs. *Br J Clin Pharmacol* **72**:133–142.
- Guo Z, Raciess S, White RB, and Stevens JC (1997) Orphenadrine and methimazole inhibit multiple cytochrome P450 enzymes in human liver microsomes. *Drug Metab Dispos* **25**:390–393.
- Hagihara K, Kazui M, Kurihara A, Yoshiike M, Honda K, Okazaki O, Farid NA, and Ikeda T (2009) A possible mechanism for the differences in efficiency and variability of active metabolite formation from thienopyridine antiplatelet agents, prasugrel and clopidogrel. *Drug Metab Dispos* **37**:2145–2152.
- Harbourt DE, Fallon JK, Ito S, Baba T, Ritter JK, Glish GL, and Smith PC (2012) Quantification of human uridine-diphosphate glucuronosyl transferase 1A isoforms in liver, intestine, and kidney using nanobore liquid chromatography-tandem mass spectrometry. *Anal Chem* **84**:98–105.
- Harper TW and Brassil PJ (2008) Reaction phenotyping: current industry efforts to identify enzymes responsible for metabolizing drug candidates. *AAPS J* **10**:200–207.
- Harvey RD and Morgan ET (2014) Cancer, inflammation, and therapy: effects on cytochrome p450-mediated drug metabolism and implications for novel immunotherapeutic agents. *Clin Pharmacol Ther* **96**:449–457.
- Herraz T (2012) Evaluation of the oxidation of 1-methyl-4-phenyl-1,2,3,6-tetrahydropyridine (MPTP) to toxic pyridinium cations by monoamine oxidase (MAO) enzymes and its use to search for new MAO inhibitors and protective agents. *J Enzyme Inhib Med Chem* **27**:810–817.
- Herraz T, Arán VJ, and Guillén H (2009) Nitroindazole compounds inhibit the oxidative activation of 1-methyl-4-phenyl-1,2,3,6-tetrahydropyridine (MPTP) neurotoxin to neurotoxic pyridinium cations by human monoamine oxidase (MAO). *Free Radic Res* **43**:975–984.
- Hillgren KM, Keppler D, Zur AA, Giacomini KM, Stieger B, Cass CE, and Zhang L; International Transporter Consortium (2013) Emerging transporters of clinical importance: an update from the International Transporter Consortium. *Clin Pharmacol Ther* **94**:52–63.
- Hines RN, Cashman JR, Philpot RM, Williams DE, and Ziegler DM (1994) The mammalian flavin-containing monooxygenases: molecular characterization and regulation of expression. *Toxicol Appl Pharmacol* **125**:1–6.
- Humerickhouse R, Lohrbach K, Li L, Bosron WF, and Dolan ME (2000) Characterization of CPT-11 hydrolysis by human liver carboxylesterase isoforms hCE-1 and hCE-2. *Cancer Res* **60**:1189–1192.
- Hutzler JM, Obach RS, Dalvie D, and Zientek MA (2013) Strategies for a comprehensive understanding of metabolism by aldehyde oxidase. *Expert Opin Drug Metab Toxicol* **9**:153–168.
- Ishizuka H, Konno K, Shiina T, Naganuma H, Nishimura K, Ito K, Suzuki H, and Sugiyama Y (1999) Species differences in the transport activity for organic anions across the bile canalicular membrane. *J Pharmacol Exp Ther* **290**:1324–1330.
- Isoherranen N, Lutz JD, Chung SP, Hachad H, Levy RH, and Ragueneau-Majlessi I (2012) Importance of multi-p450 inhibition in drug-drug interactions: evaluation of incidence, inhibition magnitude, and prediction from *in vitro* data. *Chem Res Toxicol* **25**:2285–2300.
- Itaiho K, Mackenzie PI, Ikushiro S, Miners JO, and Finel M (2008) The configuration of the 17-hydroxy group variably influences the glucuronidation of beta-estradiol and epiestradiol by human UDP-glucuronosyltransferases. *Drug Metab Dispos* **36**:2307–2315.
- Ito K, Brown HS, and Houston JB (2004) Database analyses for the prediction of *in vivo* drug-drug interactions from *in vitro* data. *Br J Clin Pharmacol* **57**:473–486.
- Ito K, Hallifax D, Obach RS, and Houston JB (2005) Impact of parallel pathways of drug elimination and multiple cytochrome P450 involvement on drug-drug interactions: CYP2D6 paradigm. *Drug Metab Dispos* **33**:837–844.
- Ito K, Ogihara K, Kanamitsu S, and Itoh T (2003) Prediction of the *in vivo* interaction between midazolam and macrolides based on *in vitro* studies using human liver microsomes. *Drug Metab Dispos* **31**:945–954.
- Ito M, Yamamoto K, Sato H, Fujiyama Y, and Bamba T (2001) Inhibitory effect of troglitazone on glucuronidation catalyzed by human uridine diphosphate-glucuronosyltransferase 1A6. *Eur J Clin Pharmacol* **56**:893–895.
- James MO (2014) Enzyme Kinetics of Conjugating Enzymes: PAPS Sulfotransferase, in *Enzyme Kinetics in Drug Metabolism Fundamentals and Applications* (Nagar S, Argikar U, and Tweedie D eds) pp 187–201, Humana Press, New York.

- Jiang M, Klein M, Zanger UM, Mohammad MK, Cave MC, Gaikwad NW, Dias NJ, Selcer KW, Guo Y, and He J, et al. (2016) Inflammatory regulation of steroid sulfatase: A novel mechanism to control estrogen homeostasis and inflammation in chronic liver disease. *J Hepatol* 64:44–52.
- Johnson C, Stubley-Beedham C, and Stell JG (1985) Hydralazine: a potent inhibitor of aldehyde oxidase activity *in vitro* and *in vivo*. *Biochem Pharmacol* 34:4251–4256.
- Johnson EF and Waterman MR, editors (1996) *Methods in Enzymology Volume 272 Cytochrome P450 Part B*. Academic Press, New York.
- Jones HM, Chen Y, Gibson C, Heimbach T, Parrott N, Peters SA, Snoeys J, Upreti VV, Zheng M, and Hall SD (2015) Physiologically based pharmacokinetic modeling in drug discovery and development: a pharmaceutical industry perspective. *Clin Pharmacol Ther* 97:247–262.
- Kamdem LK, Liu Y, Stearns V, Kadlubar SA, Ramirez J, Jeter S, Shahverdi K, Ward BA, Ogburn E, and Ratain MJ, et al. (2010) *In vitro* and *in vivo* oxidative metabolism and glucuronidation of anastrozole. *Br J Clin Pharmacol* 70:854–869.
- Kalgotkar AS and Castagnoli N, Jr (1995) Selective inhibitors of monoamine oxidase (MAO-A and MAO-B) as probes of its catalytic site and mechanism. *Med Res Rev* 15:325–388.
- Kalgotkar AS, Tugnait M, Zhu T, Kimoto E, Miao Z, Mascitti V, Yang X, Tan B, Walsky RL, and Chupka J, et al. (2011) Preclinical species and human disposition of PF-04971729, a selective inhibitor of the sodium-dependent glucose cotransporter 2 and clinical candidate for the treatment of type 2 diabetes mellitus. *Drug Metab Dispos* 39:1609–1619.
- Kazui M, Nishiya Y, Ishizuka T, Hagiwara K, Farid NA, Okazaki O, Ikeda T, and Kurihara A (2010) Identification of the human cytochrome P450 enzymes involved in the two oxidative steps in the bioactivation of clopidogrel to its pharmacologically active metabolite. *Drug Metab Dispos* 38:92–99.
- Kato Y, Nakajima M, Oda S, Fukami T, and Yokoi T (2012) Human UDP-glucuronosyltransferase isoforms involved in haloperidol glucuronidation and quantitative estimation of their contribution. *Drug Metab Dispos* 40:240–248.
- Korzekwa K (2014) Enzyme Kinetics of Oxidative Metabolism: Cytochrome, in *Enzyme Kinetics in Drug Metabolism Fundamentals and Applications* (Nagar S, Argikar U, and Tweedie D eds) p 450, Humana Press, New York.
- Kramer MA and Tracy TS (2008) Studying cytochrome P450 kinetics in drug metabolism. *Expert Opin Drug Metab Toxicol* 4:591–603.
- Krishnaswamy S, Hao Q, Von Moltke LL, Greenblatt DJ, and Court MH (2004) Evaluation of 5-hydroxytryptophol and other endogenous serotonin (5-hydroxytryptamine) analogs as substrates for UDP-glucuronosyltransferase 1A6. *Drug Metab Dispos* 32:862–869.
- Kukongviriyapan V, Phromsopa N, Tassaneeyakul W, Kukongviriyapan U, Sripa B, Hahnvanawong V, and Bhudhisawasdi V (2006) Inhibitory effects of polyphenolic compounds on human arylamine N-acetyltransferase 1 and 2. *Xenobiotica* 36:15–28.
- Lai Y and Hsiao P (2014) Beyond the ITC White Paper: emerging sciences in drug transporters and opportunities for drug development. *Curr Pharm Des* 20:1577–1594.
- Laizure SC, Herring V, Hu Z, Witbrodt K, and Parker RB (2013) The role of human carboxylesterases in drug metabolism: have we overlooked their importance? *Pharmacotherapy* 33: 210–222.
- Lang D and Kalgotkar AS (2003) Non-P450 mediated oxidation metabolism of xenobiotics, in *Drug Metabolizing Enzymes: Cytochrome P450 and Other Enzymes in Drug Discovery and Development* (Lee JS, Obach RS, and Fisher MB eds) pp 483–498, FontisMedia S.A. and Marcel Dekker Inc., New York.
- Lapham K, Baumann JN, Walsky RL, Niosi M, Orozco CC, Bourcier K, Giddens G, Obach RS, and Hyland R (2012) Digoxin and tranilast identified as novel isoform-selective inhibitors of human UDP-glucuronosyltransferase 1A9 (UGT1A9) activity (Poster P108). *Drug Metab Res* 44 (S1):82.
- Lappin G and Stevens L (2008) Biomedical accelerator mass spectrometry: recent applications in metabolism and pharmacokinetics. *Expert Opin Drug Metab Toxicol* 4:1021–1033.
- Leonardi ET and Azmitia EC (1994) MDMA (ecstasy) inhibition of MAO type A and type B: comparisons with fenfluramine and fluoxetine (Prozac). *Neuropsychopharmacology* 10: 231–238.
- Lépine J, Bernard O, Plante M, Têtu B, Pelletier G, Labrie F, Bélanger A, and Guillemette C (2004) Specificity and regioselectivity of the conjugation of estradiol, estrone, and their catecholestrogen and methoxyestrogen metabolites by human uridine diphospho-glucuronosyltransferases expressed in endometrium. *J Clin Endocrinol Metab* 89:5222–5232.
- Li AP, Hartman NR, Lu C, Collins JM, and Strong JM (1999) Effects of cytochrome P450 inducers on 17 α -ethinyloestradiol (EE2) conjugation by primary human hepatocytes. *Br J Clin Pharmacol* 48:733–742.
- Liu L, Wagner CR, and Hanna PE (2008) Human arylamine N-acetyltransferase 1: *in vitro* and intracellular inactivation by nitrosoarene metabolites of toxic and carcinogenic arylamines. *Chem Res Toxicol* 21:2005–2016.
- Lu C, Balani SK, Qian MG, Prakash SR, Ducray PS, and von Moltke LL (2010) Quantitative prediction and clinical observation of a CYP3A inhibitor-based drug – drug interactions with MLN3897, a potent CCR1 antagonist. *J Pharmacol Exp Ther* 332:562–568.
- Lu C, Hatisis P, Berg C, Lee FW, and Balani SK (2008) Prediction of pharmacokinetic drug-drug interactions using human hepatocyte suspension in plasma and cytochrome P450 phenotypic data. II. *In vitro-in vivo* correlation with ketoconazole. *Drug Metab Dispos* 36: 1255–1260.
- Lu C, Miwa GT, Prakash SR, Gan LS, and Balani SK (2007) A novel model for the prediction of drug-drug interactions in humans based on *in vitro* cytochrome p450 phenotypic data. *Drug Metab Dispos* 35:79–85.
- Lu C, Suri A, Shyu WC, and Prakash S (2014) Assessment of cytochrome P450-mediated drug-drug interaction potential of oroteronel and exposure changes in patients with renal impairment using physiologically based pharmacokinetic modeling and simulation. *Biopharm Drug Dispos* 35:543–552.
- Manevski N, Moreolo PS, Yli-Kauhalauma J, and Finel M (2011) Bovine serum albumin decreases Km values of human UDP-glucuronosyltransferases 1A9 and 2B7 and increases Vmax values of UGT1A9. *Drug Metab Dispos* 39:2117–2129.
- Mano Y, Usui T, Kamimura H, Mano Y, Usui T, and Kamimura H (2006) *In vitro* inhibitory effects of non-steroidal anti-inflammatory drugs on 4-methylumbelliferone glucuronidation in recombinant human UDP-glucuronosyltransferase glucuronosyltransferase 1A9—potent inhibition by niflumic acid. *Biopharm Drug Dispos* 27:1–6.
- Martignoni M, Groothuis GMM, and de Kanter R (2006) Species differences between mouse, rat, dog, monkey and human CYP-mediated drug metabolism, inhibition and induction. *Expert Opin Drug Metab Toxicol* 2:875–894.
- Mathur A, Tweedie DJ, Maw HH, and Li Y (2013) Unexpected interaction between CYP3A4 and BI 11634: is BI 11634 interacting with CYP3A4 similar to nifedipine? *Drug Metabol Drug Interact* 28:239–246.
- Miao Z, Nucci G, Amin N, Sharma R, Mascitti V, Tugnait M, Vaz AD, Callegari E, and Kalgotkar AS (2013) Pharmacokinetics, metabolism, and excretion of the antidiabetic agent ertugliflozin (PF-04971729) in healthy male subjects. *Drug Metab Dispos* 41:445–456.
- Milne AM, Burchell B, and Coughtrie MW (2011) A novel method for the immunoquantification of UDP-glucuronosyltransferases in human tissue. *Drug Metab Dispos* 39:2258–2263.
- Miners JO, Knights KM, Houston JB, and Mackenzie PI (2006) *In vitro-in vivo* correlation for drugs and other compounds eliminated by glucuronidation in humans: pitfalls and promises. *Biochem Pharmacol* 71:1531–1539.
- Miners JO, Mackenzie PI, and Knights KM (2010a) The prediction of drug-glucuronidation parameters in humans: UDP-glucuronosyltransferase enzyme-selective substrate and inhibitor probes for reaction phenotyping and *in vitro-in vivo* extrapolation of drug clearance and drug-drug interaction potential. *Drug Metab Rev* 42:196–208.
- Miners JO, Polasek TM, Mackenzie PI, and Knights KM (2010b) The *in vitro* characterization of inhibitory drug-drug interactions involving UDP - glucuronosyltransferase, in *Enzyme- and Transporter-Based Drug-Drug Interactions: Progress and Future Challenges* pp 217–236, Springer, New York, NY.
- Murphy DL, Karoum F, Pickar D, Cohen RM, Lipper S, Mellow AM, Tariot PN, and Sunderland T (1998) Differential trace amine alterations in individuals receiving acetylenic inhibitors of MAO-A (clorgyline) or MAO-B (selegiline and pargyline). *J Neural Transm Suppl* 52:39–48.
- Nakanishi T and Tamai I (2015) Interaction of Drug or Food with Drug Transporters in Intestine and Liver. *Curr Drug Metab* 16:753–764.
- Nemoda Z, Angyal N, Tarnok Z, Gadoros J, and Sasvari-Szekely M (2009) Carboxylesterase 1 gene polymorphism and methylphenidate response in ADHD. *Neuropharmacology* 57:731–733.
- Nirogi R, Palacharla RC, Uthukam V, Manoharan A, Srikanthapur SR, Kalakadibhan I, Boggavarapu RK, Ponnamaneni RK, Ajjala DR, and Bhayrapuni G (2015) Chemical inhibitors of CYP450 enzymes in liver microsomes: combining selectivity and unbound fractions to guide selection of appropriate concentration in phenotyping assays. *Xenobiotica* 45:95–106.
- Nishimuta H, Houston JB, and Galetin A (2014) Hepatic, intestinal, renal, and plasma hydrolysis of prodrugs in human, cynomolgus monkey, dog, and rat: implications for *in vitro-in vivo* extrapolation of clearance of prodrugs. *Drug Metab Dispos* 42:1522–1531.
- Obach RS (2004) Potent inhibition of human liver aldehyde oxidase by raloxifene. *Drug Metab Dispos* 32:89–97.
- Obach RS and Ryder TF (2010) Metabolism of ramelteon in human liver microsomes and correlation with the effect of fluvoxamine on ramelteon pharmacokinetics. *Drug Metab Dispos* 38: 1381–1391.
- Obach RS, Walsky RL, and Venkatakrishnan K (2007) Mechanism-based inactivation of human cytochrome p450 enzymes and the prediction of drug-drug interactions. *Drug Metab Dispos* 35: 246–255.
- Obach RS, Walsky RL, Venkatakrishnan K, Gaman EA, Houston JB, and Tremaine LM (2006) The utility of *in vitro* cytochrome P450 inhibition data in the prediction of drug-drug interactions. *J Pharmacol Exp Ther* 316:336–348.
- Ogilvie BW and Parkinson A (2014) Drugs as victims and perpetrators and the pharmacokinetic concept of maximum exposure, in *Handbook Metabolic Pathways of Xenobiotics* (Lee P ed) pp 103–146, Wiley, New York.
- Ogilvie BW, Usuki E, Yerino P, and Parkinson A (2008) *In Vitro* Approaches for Studying the Inhibition of Drug-Metabolizing Enzymes and Identifying the Drug-Metabolizing Enzymes Responsible for the Metabolism of Drugs (Reaction Phenotyping) with Emphasis on Cytochrome, in *Drug-Drug Interactions* (Rodrigues AD, ed) pp 450, Informa Healthcare, New York.
- Overby LH, Buckpitt AR, Lawton MP, Atta-Asafo-Adjei E, Schulze J, and Philpot RM (1995) Characterization of flavin-containing monooxygenase 5 (FMO5) cloned from human and guinea pig: evidence that the unique catalytic properties of FMO5 are not confined to the rabbit ortholog. *Arch Biochem Biophys* 317:275–284.
- Overby LH, Carver GC, and Philpot RM (1997) Quantitation and kinetic properties of hepatic microsomal and recombinant flavin-containing monooxygenases 3 and 5 from humans. *Chem Biol Interact* 106:29–45.
- Pacher P, Nivorozhkin A, and Szabó C (2006) Therapeutic effects of xanthine oxidase inhibitors: renaissance half a century after the discovery of allopurinol. *Pharmacol Rev* 58:87–114.
- Paine SW, Ménochet K, Denton R, McGinnity DF, and Riley RJ (2011) Prediction of human renal clearance from preclinical species for a diverse set of drugs that exhibit both active secretion and net reabsorption. *Drug Metab Dispos* 39:1008–1013.
- Panoutsopoulos GI, Kouretas D, Gounaris EG, and Beedham C (2004) Enzymatic oxidation of 2-phenylethylamine to phenylacetic acid and 2-phenylethanol with special reference to the metabolism of its intermediate phenylacetaldehyde. *Basic Clin Pharmacol Toxicol* 95:273–279.
- Parkinson A and Ogilvie BW (2007) Biotransformation of Xenobiotics, in *Casarett and Doull's Toxicology, the basic science of poisons* (Klaassen CD, ed, ed) pp 163–304, Mc Graw Hill, New York.
- Pelkonen O, Turpeinen M, Hakkola J, Honkakoski P, Hukkanen J, and Raunio H (2008) Inhibition and induction of human cytochrome P450 enzymes: current status. *Arch Toxicol* 82:667–715.
- Peters SA, Schroeder PE, Giri N, and Dolgos H (2012) Evaluation of the use of static and dynamic models to predict drug-drug interaction and its associated variability: impact on drug discovery and early development. *Drug Metab Dispos* 40:1495–1507.
- Pfeifer ND, Yang K, and Brouwer KL (2013) Hepatic basolateral efflux contributes significantly to rosuvastatin disposition I: characterization of basolateral versus biliary clearance using a novel protocol in sandwich-cultured hepatocytes. *J Pharmacol Exp Ther* 347:727–736.
- Phoemien JH, van Ommen B, and van Bladeren PJ (1990) Inhibition of rat and human glutathione S-transferase isoenzymes by ethacrynic acid and its glutathione conjugate. *Biochem Pharmacol* 40:1631–1635.
- Polidoro G, Di Ilio C, Arduini A, and Federici G (1981) Molecular and catalytic properties of purified glutathione S-transferase from human placenta. *Biochem Med* 25:247–259.
- Pratt SE, Durland-Busby S, Shepard RL, Heinz-Taheny K, Iversen PW, and Dantzig AH (2013) Human carboxylesterase-2 hydrolyzes the prodrug of gemcitabine (LY2334737) and confers prodrug sensitivity to cancer cells. *Clin Cancer Res* 19:1159–1168.
- Pryde DC, Dalvie D, Hu Q, Jones P, Obach RS, and Tran TD (2010) Aldehyde oxidase: an enzyme of emerging importance in drug discovery. *J Med Chem* 53:8441–8460.
- Pybus BS, Sousa JC, Jin X, Ferguson JA, Christian RE, Barnhart R, Vuong C, Sciotti RJ, Reichard GA, and Kozar MP, et al. (2012) CYP450 phenotyping and accurate mass identification of metabolites of the 8-aminoquinoline, anti-malarial drug primaquine. *Malar J* 11:259–267.

- Ragunathan N, Dairou J, Pluvinage B, Martins M, Petit E, Janel N, Dupret JM, and Rodrigues-Lima F (2008) Identification of the xenobiotic-metabolizing enzyme arylamine N-acetyltransferase 1 as a new target of cisplatin in breast cancer cells: molecular and cellular mechanisms of inhibition. *Mol Pharmacol* 73:1761–1768.
- Ramanathan R, Josephs JL, Jemal M, Arnold M, and Humphreys WG (2010) Novel MS solutions inspired by MIST. *Bioanalysis* 2:1291–1313.
- Ribelles N, López-Siles J, Sánchez A, González E, Sánchez MJ, Carabantes F, Sánchez-Rovira P, Márquez A, Dueñas R, and Sevilla I, et al. (2008) A carboxylesterase 2 gene polymorphism as predictor of capecitabine on response and time to progression. *Curr Drug Metab* 9:336–343.
- Riches Z, Stanley EL, Bloomer JC, and Coughtrie MW (2009) Quantitative evaluation of the expression and activity of five major sulfotransferases (SULTs) in human tissues: the SULT “pie”. *Drug Metab Dispos* 37:2255–2261.
- Rodrigues AD (1999) Integrated cytochrome P450 reaction phenotyping: attempting to bridge the gap between cDNA-expressed cytochromes P450 and native human liver microsomes. *Biochem Pharmacol* 57:465–480.
- Ross MK, Borazjani A, Wang R, Crow JA, and Xie S (2012) Examination of the carboxylesterase phenotype in human liver. *Arch Biochem Biophys* 522:44–56.
- Rowland A, Elliot DJ, Williams JA, Mackenzie PI, Dickinson RG, and Miners JO (2006) In vitro characterization of lamotrigine N2-glucuronidation and the lamotrigine-valproic acid interaction. *Drug Metab Dispos* 34:1055–1062.
- Sato Y, Nagata M, Kawamura A, Miyashita A, and Usui T (2012) Protein quantification of UDP-glucuronosyltransferases 1A1 and 2B7 in human liver microsomes by LC-MS/MS and correlation with glucuronidation activities. *Xenobiotica* 42:823–829.
- Saura J, Nadal E, van den Berg B, Vila M, Bombi JA, and Mahy N (1996) Localization of monoamine oxidases in human peripheral tissues. *Life Sci* 59:1341–1349.
- Schaefer O, Ohtsuki S, Kawakami H, Inoue T, Liehner S, Saito A, Sakamoto A, Ishiguro N, Matsumaru T, and Terasaki T, et al. (2012) Absolute quantification and differential expression of drug transporters, cytochrome P450 enzymes, and UDP-glucuronosyltransferases in cultured primary human hepatocytes. *Drug Metab Dispos* 40:93–103.
- Schrag ML, Cui D, Rushmore TH, Shou M, Ma B, and Rodrigues AD (2004) Sulfotransferase 1E1 is a low KM isoform mediating the 3-O-sulfation of ethinyl estradiol. *Drug Metab Dispos* 32:1299–1303.
- Sensenhauser C (2014) In vitro CYP/FMO Reaction Phenotyping, in *Methods in Pharmacology and Toxicology: Optimization in Drug Discovery: Vitro Methods* (Caldwell GW, Yan Z, eds) pp 137–169, Humana Press, New York.
- Seo KA, Kim HJ, Jeong ES, Abdalla N, Choi CS, Kim DH, and Shin JG (2014) In vitro assay of six UDP-glucuronosyltransferase isoforms in human liver microsomes, using cocktails of probe substrates and liquid chromatography-tandem mass spectrometry. *Drug Metab Dispos* 42:1803–1810.
- Shardlow CE, Generaux GT, Patel AH, Tai G, Tran T, and Bloomer JC (2013) Impact of physiologically based pharmacokinetic modeling and simulation in drug development. *Drug Metab Dispos* 41:1994–2003.
- Shimizu M, Fukami T, Nakajima M, and Yokoi T (2014) Screening of specific inhibitors for human carboxylesterases or arylacetamide deacetylase. *Drug Metab Dispos* 42:1103–1109.
- Shou M, Hayashi M, Pan Y, Xu Y, Morrissey K, Xu L, and Skiles GL (2008) Modeling, prediction, and in vitro in vivo correlation of CYP3A4 induction. *Drug Metab Dispos* 36:2355–2370.
- Sim E, Lack N, Wang CJ, Long H, Westwood I, Fullam E, and Kawamura A (2008a) Arylamine N-acetyltransferases: structural and functional implications of polymorphisms. *Toxicology* 254:170–183.
- Sim E, Walters K, and Boukouvala S (2008b) Arylamine N-acetyltransferases: from structure to function. *Drug Metab Rev* 40:479–510.
- Sridar C, Hanna I, and Hollenberg PF (2013) Quantitation of UGT1A1 in human liver microsomes using stable isotope-labelled peptides and mass spectrometry based proteomic approaches. *Xenobiotica* 43:336–345.
- Störmer E, Roots I, and Brockmoller J (2000) Benzydramine N-oxidation as an index reaction reflecting FMO activity in human liver microsomes and impact of FMO3 polymorphisms on enzyme activity. *British J of Clin Pharmacol* 50:553–561.
- Strelevitz TJ, Orozco CC, and Obach RS (2012) Hydralazine as a selective probe inactivator of aldehyde oxidase in human hepatocytes: estimation of the contribution of aldehyde oxidase to metabolic clearance. *Drug Metab Dispos* 40:1441–1448.
- Swift B, Pfeiffer ND, and Brouwer KL (2010) Sandwich-cultured hepatocytes: an in vitro model to evaluate hepatobiliary transporter-based drug interactions and hepatotoxicity. *Drug Metab Rev* 42:446–471.
- Tapner MJ, Jones BE, Wu WM, and Farrell GC (2004) Toxicity of low dose azathioprine and 6-mercaptopurine in rat hepatocytes. Roles of xanthine oxidase and mitochondrial injury. *J Hepatol* 40:454–463.
- Tweedie D, Polli JW, Berglund EG, Huang SM, Zhang L, Poirier A, Chu X, and Feng B; International Transporter Consortium (2013) Transporter studies in drug development: experience to date and follow-up on decision trees from the International Transporter Consortium. *Clin Pharmacol Ther* 94:113–125.
- Uchaipichat V, Mackenzie PI, Elliot DJ, and Miners JO (2006a) Selectivity of substrate (trifluoperazine) and inhibitor (amitriptyline, androsterone, canrenoic acid, hecogenin, phenylbutazone, quinidine, quinine, and sulfapyrazone) “probes” for human udp-glucuronosyltransferases. *Drug Metab Dispos* 34:449–456.
- Uchaipichat V, Winner LK, Mackenzie PI, Elliot DJ, Williams JA, and Miners JO (2006b) Quantitative prediction of in vivo inhibitory interactions involving glucuronidated drugs from in vitro data: the effect of fluconazole on zidovudine glucuronidation. *Br J Clin Pharmacol* 61:427–439.
- Uttamsingh V, Lu C, Miwa G, and Gan LS (2005) Relative contributions of the five major human cytochromes P450, 1A2, 2C9, 2C19, 2D6, and 3A4, to the hepatic metabolism of the proteasome inhibitor bortezomib. *Drug Metab Dispos* 33:1723–1728.
- Varma MV, Pang KS, Isoherranen N, and Zhao P (2015) Dealing with the complex drug-drug interactions: towards mechanistic models. *Biopharm Drug Dispos* 36:71–92.
- Varma MV, Feng B, Obach RS, Troutman MD, Chupka J, Miller HR, and El-Kattan A (2009) Physicochemical determinants of human renal clearance. *J Med Chem* 52:4844–4852.
- Venkatakrishnan K, Von Molte LL, and Greenblatt DJ (2001) Human drug metabolism and the cytochromes P450: application and relevance of in vitro models. *J Clin Pharmacol* 41:1149–1179.
- Vieira ML, Kirby B, Ragueneau-Majlessi I, Galetin A, Chien JY, Einolf HJ, Fahmi OA, Fischer V, Fretland A, and Grime K, et al. (2014) Evaluation of various static in vitro-in vivo extrapolation models for risk assessment of the CYP3A inhibition potential of an investigational drug. *Clin Pharmacol Ther* 95:189–198.
- Vietri M, Pietrabissa A, Mosca F, and Pacifici GM (2002) Inhibition of mycophenolic acid glucuronidation by niflumic acid in human liver microsomes. *Eur J Clin Pharmacol* 58:93–97.
- Vishwanathan K, Babalola K, Wang J, Espina R, Yu L, Adedoyin A, Talaat R, Mutlib A, and Scatina J (2009) Obtaining exposures of metabolites in preclinical species through plasma pooling and quantitative NMR: addressing metabolites in safety testing (MIST) guidance without using radiolabeled compounds and chemically synthesized metabolite standards. *Chem Res Toxicol* 22:311–322.
- Wadkins RM, Hyatt JL, Edwards CC, Tsurkan L, Redinbo MR, Wheelock CE, Jones PD, Hammock BD, and Potter PM (2007) Analysis of mammalian carboxylesterase inhibition by trifluoromethylketone-containing compounds. *Mol Pharmacol* 71:713–723.
- Walsky RL, Bauman JN, Bourcier K, Giddens G, Lapham K, Negahban A, Ryder TF, Obach RS, Hyland R, and Goosen TC (2012) Optimized assays for human UDP-glucuronosyltransferase (UGT) activities: altered alamethicin concentration and utility to screen for UGT inhibitors. *Drug Metab Dispos* 40:1051–1065.
- Walsky RL, Obach RS, Gaman EA, Gleeson JP, and Proctor WR (2005). Selective inhibition of human cytochrome P4502C8 by montelukast. *Drug Metab Dispos* 33: 413–418.
- Wang H and LeCluyse EL (2003) Role of orphan nuclear receptors in the regulation of drug-metabolising enzymes. *Clin Pharmacokinet* 42:1331–1357.
- Wang LQ and James MO (2006) Inhibition of sulfotransferases by xenobiotics. *Curr Drug Metab* 7:83–104.
- Warholm M, Guthenberg C, and Mannervik B (1983) Molecular and catalytic properties of glutathione transferase mu from human liver: an enzyme efficiently conjugating epoxides. *Biochemistry* 22:3610–3617.
- Waters NL, Obach RS, and Di L (2014) Considerations of Unbound Drug Concentration in Enzyme Kinetics, in *Enzyme Kinetics in Drug Metabolism Fundamentals and Applications* (Nagar S, Argikar U, and Tweedie D eds) pp 119–145, Humana Press, New York.
- Weyler W, Hsu YP, and Breakfield XO (1990) Biochemistry and genetics of monoamine oxidase. *Pharmacol Ther* 47:391–417.
- Whalen R and Boyer TD (1998) Human glutathione S-transferases. *Semin Liver Dis* 18:345–358.
- Wienkers LC and Stevens JC (2003) Cytochrome P450 reaction phenotyping, in *Drug Metabolizing Enzymes: Cytochrome P450 and Other Enzymes in Drug Discovery and Development* (Lee JS, Obach RS, Fisher MB eds) pp 255–300, FontisMedia S.A. & Marcel Dekker, Inc., New York.
- Windmill KF, Gaedigk A, Hall PM, Samarantunga H, Grant DM, and McManus ME (2000) Localization of N-acetyltransferases NAT1 and NAT2 in human tissues. *Toxicol Sci* 54:19–29.
- Wu H, Dombrovsky L, Tempel W, Martin F, Loppnau P, Goodfellow GH, Grant DM, and Plotnikov AN (2007) Structural basis of substrate-binding specificity of human arylamine N-acetyltransferases. *J Biol Chem* 282:30189–30197.
- Yang J, Jamei M, Yeo KR, Tucker GT, and Rostami-Hodjegan A (2007) Prediction of intestinal first-pass drug metabolism. *Curr Drug Metab* 8:676–684.
- Yang X, Atkinson K, and Di L (2016) Novel cytochrome P450 reaction phenotyping for low clearance compounds using hepatocyte relay method. *Drug Metab Dispos* 44:460–465.
- Yi P and Luffer-Atlas D (2010) A radiocalibration method with pseudo internal standard to estimate circulating metabolite concentrations. *Bioanalysis* 2:1195–1210.
- Youdim MB, Bakhle YS, and Bakhle YS (2006) Monoamine oxidase: isoforms and inhibitors in Parkinson's disease and depressive illness. *Br J Pharmacol* 147 (Suppl 1):S287–S296.
- Youdim KA, Zayed A, Dickens M, Phipps A, Griffiths M, Darekar A, Hyland R, Fahmi O, Hurst S, and Plowchalk DR, et al. (2008) Application of CYP3A4 in vitro data to predict clinical drug-drug interactions; predictions of compounds as objects of interaction. *Br J Clin Pharmacol* 65: 680–692.
- Yu C, Chen CL, Gorycki FL, and Neiss TG (2007) A rapid method for quantitatively estimating metabolites in human plasma in the absence of synthetic standards using a combination of liquid chromatography/mass spectrometry and radiometric detection. *Rapid Commun Mass Spectrom* 21:497–502.
- Yu J, Ritchie TK, Mulgaonkar A, and Ragueneau-Majlessi I (2014) Drug disposition and drug-drug interaction data in 2013 FDA new drug applications: a systematic review. *Drug Metab Dispos* 42:1991–2001.
- Zhang D, Chando TJ, Everett DW, Patten CJ, Dehal SS, and Humphreys WG (2005) In vitro inhibition of UDP glucuronosyltransferases by atazanavir and other HIV protease inhibitors and the relationship of this property to in vivo bilirubin glucuronidation. *Drug Metab Dispos* 33: 1729–1739.
- Zhang H, Davis CD, Sinz MW, and Rodrigues AD (2007) Cytochrome P450 reaction-phenotyping: an industrial perspective. *Expert Opin Drug Metab Toxicol* 3:667–687.
- Zhang J and Cashman JR (2006) Quantitative analysis of FMO gene mRNA levels in human tissues. *Drug Metab Dispos* 34:19–26.
- Zhao P, Rowland M, and Huang SM (2012) Best practice in the use of physiologically based pharmacokinetic modeling and simulation to address clinical pharmacology regulatory questions. *Clin Pharmacol Ther* 92:17–20.
- Zhao YS, Chen F, and Li L (2014) Are circulating metabolites important in pharmacokinetic drug-drug interactions? A retroanalysis of clinical data. *Curr Drug Metab* 15:767–790.
- Zhou J and Miners JO (2014) Enzyme kinetics of uridine diphosphate glucuronosyltransferase (UGTs), in *Enzyme Kinetics in Drug Metabolism Fundamentals and Applications* (Swati N, Upendra A, and Donald D eds) pp 203–228, Humana Press, New York.
- Zhu HJ, Appel DI, Jiang Y, and Markowitz JS (2009) Age- and sex-related expression and activity of carboxylesterase 1 and 2 in mouse and human liver. *Drug Metab Dispos* 37:1819–1825.
- Ziegler DM (2002) An overview of the mechanism, substrate specificities, and structure of FMOs. *Drug Metab Rev* 34:503–511.
- Zientek M, Jiang Y, Youdim K, and Obach RS (2010) In vitro-in vivo correlation for intrinsic clearance for drugs metabolized by human aldehyde oxidase. *Drug Metab Dispos* 38: 1322–1327.
- Zientek MA and Youdim K (2015) Reaction phenotyping: advances in the experimental strategies used to characterize the contribution of drug-metabolizing enzymes. *Drug Metab Dispos* 43:163–181.

Address correspondence to: T. Bohnert, Preclinical Drug Metabolism and Pharmacokinetics, Biogen, 255 Binney St, Cambridge, MA 02142. E-mail: tonika.bohnert@biogen.com