

## Correction to “Does Addition of Protein to Hepatocyte or Microsomal In Vitro Incubations Provide a Useful Improvement in In Vitro-In Vivo Extrapolation Predictability?”

The above article [Kameyama T, Sodhi JK, and Benet LZ (2022) *Drug Metab Dispos*, 50:401-412; DOI: <https://doi.org/10.1124/dmd.121.000677>], was published with several errors introduced by the compositor during the proofing process. An incorrect modification was made to Figure 1C and the wrong support listed on the Nippon Shinyaku Co., Ltd, Japan grant. The funding statement and corrected figure 1 are provided below. The PDF and HTML versions of the article have been corrected. The compositor apologizes for any inconvenience caused by these errors.

### Funding Information

This work was supported by a Mary Anne Koda-Kimble Seed award for innovation; a grant from Nippon Shinyaku Co., Ltd., Japan (to T. K.); an American Foundation for Pharmaceutical Education Pre-Doctoral Fellowship (to J.K.S.); National Institutes of Health National Institute of General Medical Sciences [Grant R25-GM568470] (to J.K.S.); a Louis Zeh Fellowship (to J.K.S.); and National Institutes of Health National Institute of Diabetes and Digestive and Kidney Diseases [Grant P30-DK026743] (to L.Z.B.).

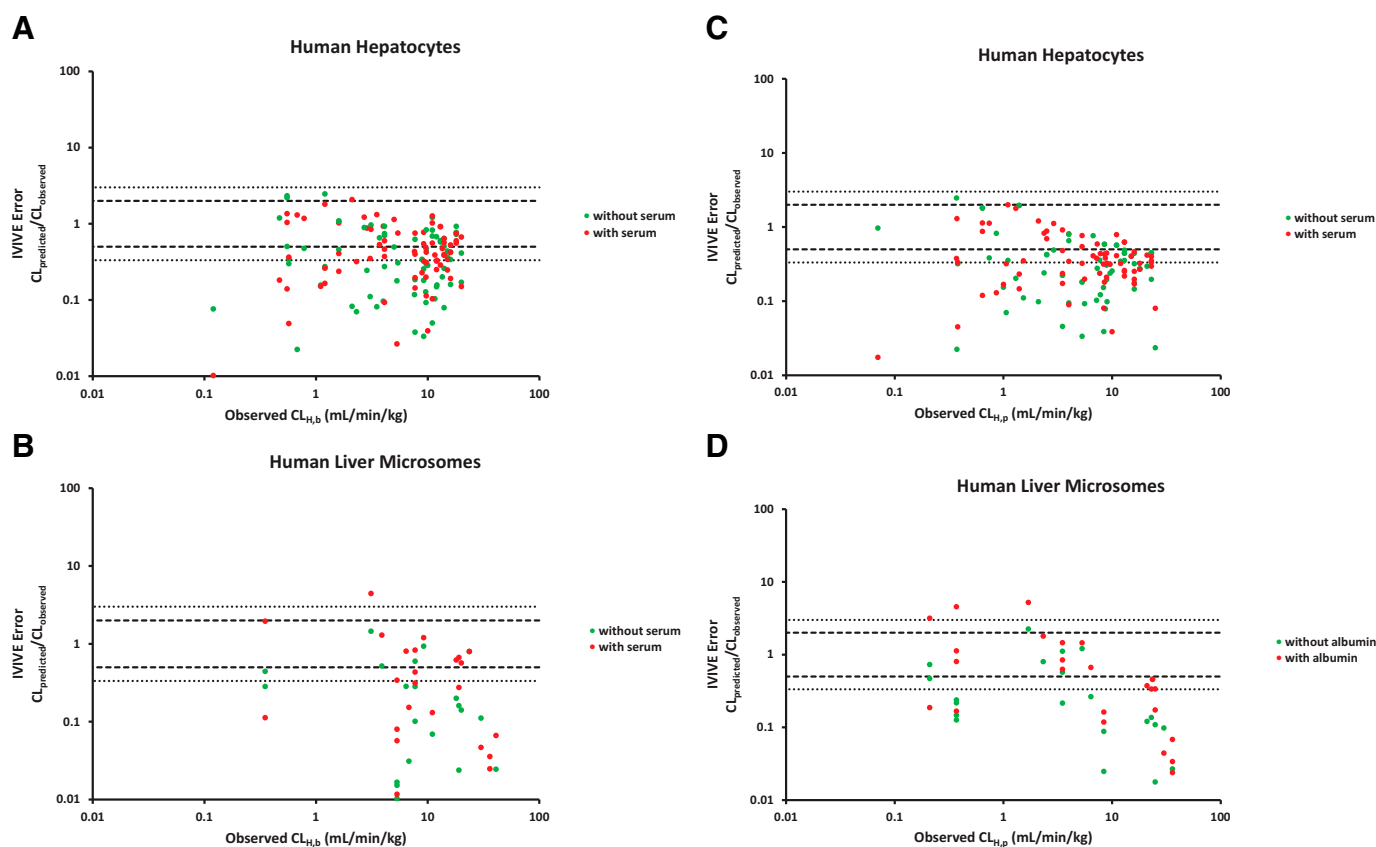


Figure 1