


DRUG METABOLISM AND DISPOSITION

Research question

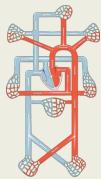
Are tissue concentrations predicted using physiologically based pharmacokinetics (PBPK) accurate?



Methodology

beta-lactam antibiotics (N=5) 
plasma, tissue biopsy and microdialysis data

PBPK predictions



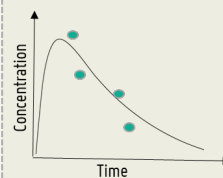
Simcyp®

Clinical observations



Clinical studies (n=26)

Results



Plasma

- accurate



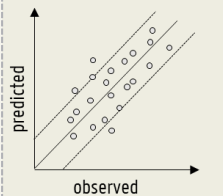
Tissue biopsies

- underpredicted



Microdialysate

- overpredicted



50th Anniversary Celebration Collection