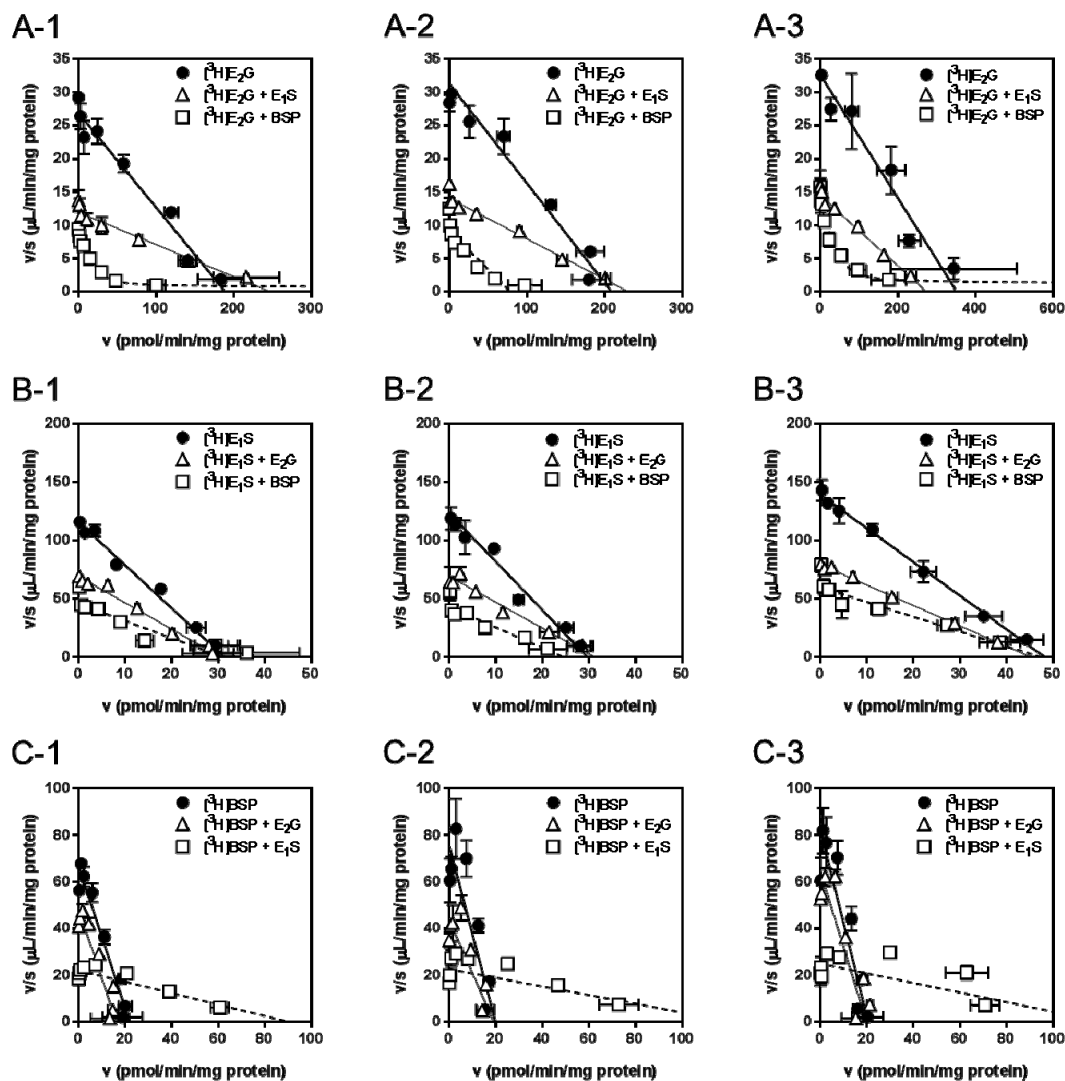


[Title] Substrate-Dependent Inhibition of Organic Anion Transporting Polypeptide 1B1: Comparative Analysis with Prototypical Probe Substrates, Estradiol-17 $\beta$ -Glucuronide, Estrone-3-Sulfate, and Sulfobromophthalein

[Authors] Saki Izumi, Yoshitane Nozaki, Takafumi Komori, Kazuya Maeda, Osamu Takenaka, Kazutomi Kusano, Tsutomu Yoshimura, Hiroyuki Kusuhara, and Yuichi Sugiyama

[Journal] Drug Metabolism and Disposition



**Supplemental Fig. 1. Individual data of mutual inhibition of OATP1B1-mediated uptake of  $[^3\text{H}]$ E<sub>2</sub>G,  $[^3\text{H}]$ E<sub>1</sub>S, and  $[^3\text{H}]$ BSP.** (A-1 to A-3) concentration-dependent uptake of  $[^3\text{H}]$ E<sub>2</sub>G (0.003 – 100  $\mu\text{M}$ ) for 5 min in the absence (closed circles) and presence of unlabeled E<sub>1</sub>S (0.1  $\mu\text{M}$ , open triangles) or BSP (0.3  $\mu\text{M}$ , open squares). (B-1 to B-3) concentration-dependent uptake of  $[^3\text{H}]$ E<sub>1</sub>S (0.003 – 10  $\mu\text{M}$ ) for 1 min in the absence (closed circles) and presence of unlabeled E<sub>2</sub>G (10  $\mu\text{M}$ , open triangles) or BSP (0.3  $\mu\text{M}$ , open squares). (C-1 to C-3) concentration-dependent uptake of  $[^3\text{H}]$ BSP (0.007 – 10  $\mu\text{M}$ ) for 5 min in the absence (closed circles) and presence of unlabeled E<sub>2</sub>G (10  $\mu\text{M}$ , open triangles) or E<sub>1</sub>S (10  $\mu\text{M}$ , open squares). Data are shown as Eadie-Hofstee plot, and each point represents mean  $\pm$  SD (n=3). Individual data from three independent experiments are given in this supplemental figure.