

Supplemental Materials

Title

Functional proliferating human hepatocytes: *in vitro* hepatocyte model for drug metabolism, excretion and toxicity

Authors

Shida Qiao, Sisi Feng, Ting He, Zhitao Wu, Chen Ma, Zhaoliang Peng, E Tian and Guoyu Pan

Journal: Drug Metabolism and Disposition

DMD-AR-2020-000275

Supplemental data**Supplemental Table 1.** Demographics, supplier and metabolic activity of primary human hepatocytes

used for metabolism, disposition and toxicity.

No.	Donor	Supplier	Race	Age	Sex	Thaw viability	CYP isoform (pmol/min/million cells)		
							1A2	2B6	3A4
1	MRW ¹	1	C	11mos	M	85%	15.5	4.62	14.0
2	QIE ¹	1	C	7mos	M	86%	12.5	7.19	11.8
3	LHum15101 ²	2	C	33	M	92%	25.0	8.33	6.67
4	LHuf17905A ²	2	C	58	F	94%	31.6	6.67	6.67

C: Caucasian; ¹) BioreclamationIVT GmbH (Frankfurt/Main, Germany/Baltimore, MD, USA). Cells

were incubated in suspension either for 4 hours at 37°C with the following test substrates: phenacetin

(15µM), midazolam (15µM), bupropion (250µM).²) XenoTech (Lenexa, KS, USA). Cells were incubated

in suspension either for 1 hour at 37°C with the following test substrates: phenacetin (200µM),

midazolam (50µM), bupropion (100µM). Metabolite rate of formation was measured in CYP1A2

acetaminophen, CYP2B6 hydroxybupropion, and CYP3A4 1-hydropromidazolam.

Supplemental Table 2. HPLC/MS-MS conditions and parameters for CYP450 enzyme activity assays.

CYP450 isoform	Probe Substrate	HPLC column	Flow rate (mL/min)	Q1/Q3 (m/z)	Mode	CE
1A2	Phenacetin	1	0.25	180/110.1	Positive	25
2B6	Bupropion	1	0.25	235.2/86.15	Positive	24
2C9	Diclofenac acid	1	0.25	294.1/250.1	Negative	11
2C19	s-Mephenytoin	1	0.25	219.2/133.9	Positive	21
2D6	Dextromethorphan	1	0.25	271.8/171	Positive	40
2E1	Chlorzoxazone	1	0.25	167.9/132.0	Negative	20
3A4	Testosterone	1	0.25	289.1/97.05	Positive	20

HPLC column: 1 INERTSIL ODS-4 C18 (2.1×100 mm), GL Sciences, Japan

Supplemental Table 3. Primer sequences used for RT-qPCR

Gene	Sequences (Forward, 5' to 3')	Sequences (Reverse, 5' to 3')
<i>CK7</i>	GACATCTTTGAGGCCAGATT	CTTGAAGTCCTCCACCACATC
<i>SOX17</i>	CTGGTGATGGTTGCACAATC	CGCCCTTCACCTTCATGT
<i>HNF4A</i>	TCCAACCCAACCTCATCCTCCTTCTT	TCCTCTCCACTCCAAGTTCCTGTT
<i>CEBPA</i>	GATAACCTTGTGCCTTGGAATG	GAGGCAGGAAACCTCCAAATA
<i>ALB</i>	GTGAAACACAAGCCCAAGGCAACA	TCCTCGGCAAAGCAGGTCTC
<i>AAT</i>	AGGGCCTGAAGCTAGTGGATAAGT	TCTGTTTCTTGGCCTCTTCGGTGT
<i>CYP1A2</i>	ATGCCCTCAACACCTTCTC	CTCCTGCAACCTGCTGAT
<i>CYP2B6</i>	TTGGATGTGTAGAGGACAGAGA	ATACACAGCAAGGCTACAGC
<i>CYP3A4</i>	GTGACCAAATCAGTGTGAGGAGGTAGA	AGGAGGAGTTAATGGTGCTAACTGG
<i>BSEP</i>	TACACAGAGGCGGGTCTATAA	CTGGTCTTCAGTCCTTCTGTTC
<i>MRP2</i>	CCACAAGCCCAGAATAAGGTAG	ACTGACAATTGGTAGGTGAAAGT
<i>NTCP</i>	GTGGCAATCAAGAGTGGTGTC	ACTGGTCCTGGTTCTCATTCC
<i>OATP1B1</i>	TTGGAGGTGTTTTGACTGCTT	ACAAGTGGATAAGGTTCGATGTTG
<i>TBP</i>	TTGCTGAGAAGAGTGTGCTGGAGATG	CGTAAGGTGGCAGGCTGTTGTT

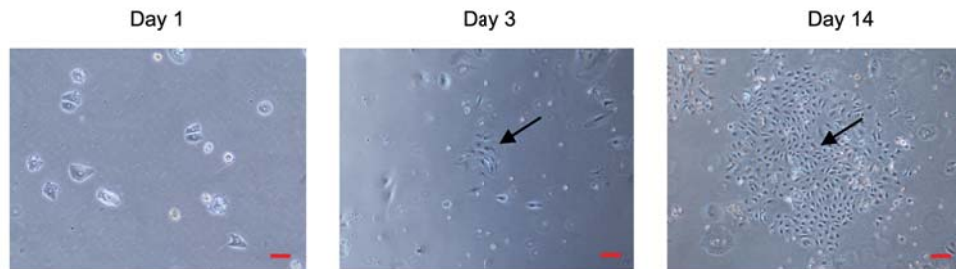
Supplemental Table 4. *In vitro* toxicity test TC₅₀ values in PHH, ProliHH-P and ProliHH-M for 12

compounds.

Compounds	TC ₅₀ values (μM)			literature
	PHH	ProliHH-P	ProliHH-M	
Lithocholic acid	153.9	108.7	58.76	
Cyclosporin A	17.87	6.14	63.35	
Troglitazone	7.03	4.41	108.8	
Tamoxifen	3.03	24.94	9.05	
Chlorpromazine	34.83	15.48	30.06	
Amiodarone	11.44	10.83	18.25	
Imipramine	44.43	425.9	770.1	
Chenodeoxycholic Acid	754.7	526.1	500.1	
Ibuprofen	3717	3486	3836	
Valproic acid	>5000 ¹	>5000	>5000	(Albrecht et al., 2019)
Isoniazid	>5000 ¹	>5000	>5000	(Albrecht et al., 2019)
Rifampicin	255 ¹	878.8	488.8	(Albrecht et al., 2019)

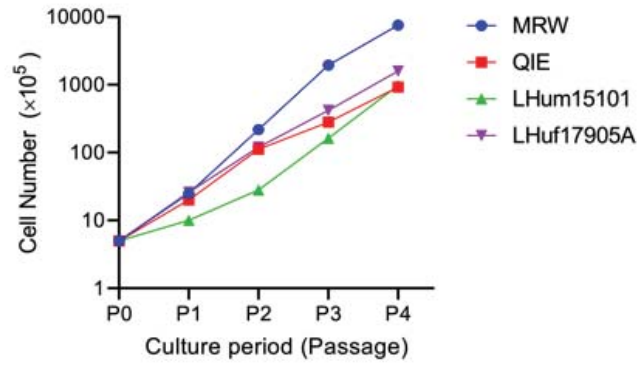
Supplemental Figure 1: Morphology of ProlHH at indicated days in HM culture.

Phase microscopy shows colonies of ProlHH generated from primary hepatocytes in day 1, day 3, and day 14. ProlHH were derived from donor QIE. Scale bar, 100 μm .



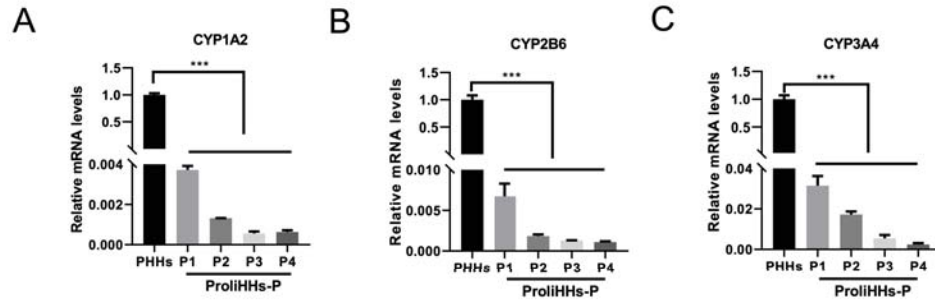
Supplemental Figure 2: ProliHH were proliferative in HM culture.

Growth curves of cultured ProliHH were analyzed at indicated passages.



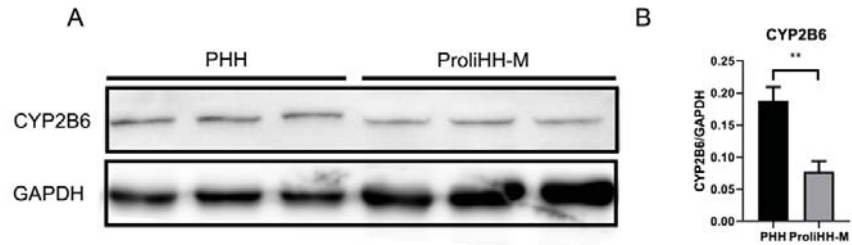
Supplemental Figure 3: Impact of culture time on CYP450 mRNA expression in ProliHH.

Comparison of CYP450 mRNA expression determined at PHH (freshly thawed PHH source) to P4 (week four) of ProliHH-P (donor QIE) by qPCR. (A) CYP1A2 (B) CYP2B6 (C) CYP3A4. Data were normalized to PHH. All error bars indicate \pm SD.



Supplemental Figure 4: Protein expression level of CYP2B6 enzyme in ProliHH-M.

Protein expression level of CYP2B6 enzyme in ProliHH-M was analyzed by Western blotting compared with the PHH. (A) The Western blotting results of CYP2B6 expression in ProliHH-M and PHH (B) The statistical analysis for (A).

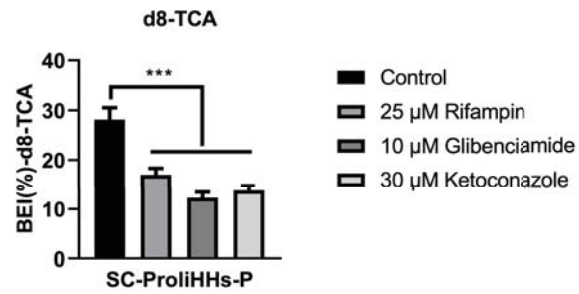


Supplemental Figure 5: Effect of cholestatic drugs on d8-TCA efflux in sandwich cultured ProlIHh.

SC-ProlIHh-P were treated with 5 μ M d8-TCA alone or in combination with BSEP inhibitors for 15 min.

BSEP inhibitors include 25 μ M rifampicin, 10 μ M glibenclamide and 30 μ M ketoconazole. ProlIHh

were generated from donor LHum15101.



References

Albrecht W, Kappenberg F, Brecklinghaus T, Stoeber R, Marchan R, Zhang M, Ebbert K, Kirschner H,

Grinberg M, and Leist M (2019) Prediction of human drug-induced liver injury (DILI) in relation to

oral doses and blood concentrations. *Archives of toxicology* 93:1609-1637.