

SUPPLEMENTAL FIGURES

Evaluation of Normothermic Machine Perfusion of Porcine Livers as a Novel Preclinical Model to Predict Biliary Clearance and Transporter-mediated Drug-Drug Interactions using Statins

L.J. Stevens^{1,2}, A.Z.X. Zhu³, P.P. Chothe⁴, S.K. Chowdhury⁴, J. M. Donkers², W.H.J. Vaes², C.A.J. Knibbe⁵, I.P.J. Alwayn¹ and E. van de Steeg²

¹ Department of Surgery, Leiden University Medical Centre (LUMC) Transplant Center, Leiden, the Netherlands

² The Netherlands Organization for Applied Scientific Research (TNO), Zeist, the Netherlands

³ Quantitative Solutions, Takeda Pharmaceutical International, Cambridge, MA, USA

⁴ Department of Drug Metabolism & Pharmacokinetics, Takeda Pharmaceuticals International, Cambridge, MA, USA

⁵ Division of Systems Biomedicine and Pharmacology, Leiden Academic Centre for Drug Research (LACDR), Leiden, the Netherlands & Department of Clinical Pharmacy, St. Antonius Hospital Nieuwegein and Utrecht, the Netherlands

Drug Metabolism and disposition

DMD-AR-2021-000521

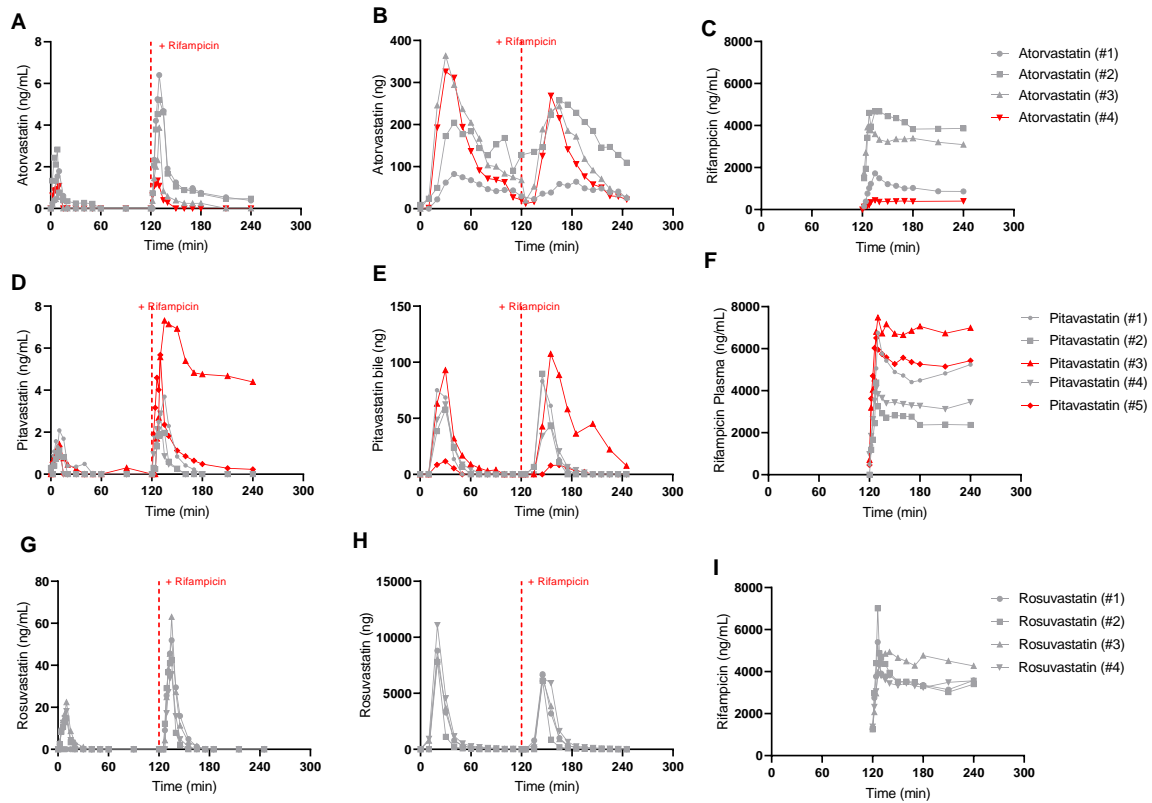


Figure S2. Plasma and bile pharmacokinetic profiles of all perfused livers (n=14). Data excluded from PK analysis are represented with a red line, included data are presented in grey. PK of atorvastatin in (A) plasma and (B) bile, (C) showing the plasma rifampicin concentration of the livers exposed to atorvastatin, (D) PK of pitavastatin in plasma and (E) bile and (F) the plasma profile of rifampicin in livers exposed to pitavastatin. (G) PK of rosuvastatin in plasma and (H) bile and the plasma concentration of rifampicin in livers exposed to rosuvastatin