

SUPPLEMENTAL FIGURES

Evaluation of Normothermic Machine Perfusion of Porcine Livers as a Novel Preclinical Model to Predict Biliary Clearance and Transporter-mediated Drug-Drug Interactions using Statins

L.J. Stevens^{1,2}, A.Z.X. Zhu³, P.P. Chothe⁴, S.K. Chowdhury⁴, J. M. Donkers², W.H.J. Vaes², C.A.J. Knibbe⁵, I.P.J. Alwayn¹ and E. van de Steeg²

¹ Department of Surgery, Leiden University Medical Centre (LUMC) Transplant Center, Leiden, the Netherlands

² The Netherlands Organization for Applied Scientific Research (TNO), Zeist, the Netherlands

³ Quantitative Solutions, Takeda Pharmaceutical International, Cambridge, MA, USA

⁴ Department of Drug Metabolism & Pharmacokinetics, Takeda Pharmaceuticals International, Cambridge, MA, USA

⁵ Division of Systems Biomedicine and Pharmacology, Leiden Academic Centre for Drug Research (LACDR), Leiden, the Netherlands & Department of Clinical Pharmacy, St. Antonius Hospital Nieuwegein and Utrecht, the Netherlands

Drug Metabolism and disposition

DMD-AR-2021-000521

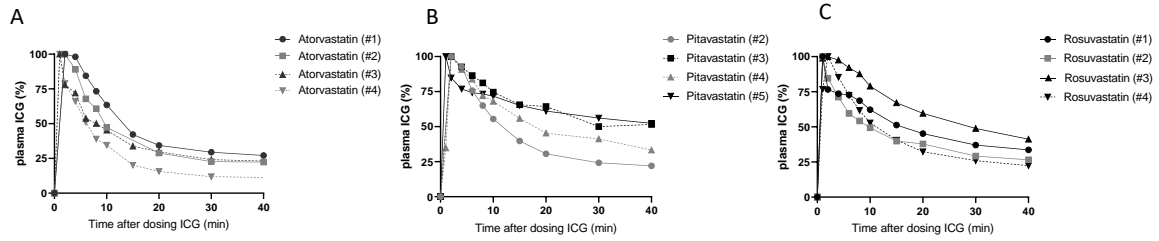


Figure S3. indocyanine green (ICG) clearance from plasma upon dosing ICG as an IV bolus (10 mg) to the perfusate 360 min after starting the liver perfusion and exposing livers to atorvastatin 1-4 (A), pitavastatin 2-5 (pitavastatin 1 NA: due to decrease in portal and arterial and bile flow) (B) and rosuvastatin (C).