

Weston D, Thomas S, Boyle GW, Pieren M, Alpibectir: Early Qualitative and Quantitative Metabolic Profiling from a First-Time-in-Human Study by Combining 19F-NMR, 1H-NMR and HRMS Analyses. Drug Metab Dispos DMD-AR-2023-001562

QE13MAY22DW014 #1738 RT: 3.23 AV: 1 NL: 1.39E6
 F: FTMS + c ESI d Full lock ms2 225.1849@hcd25.00 [50.0000-250.0000]

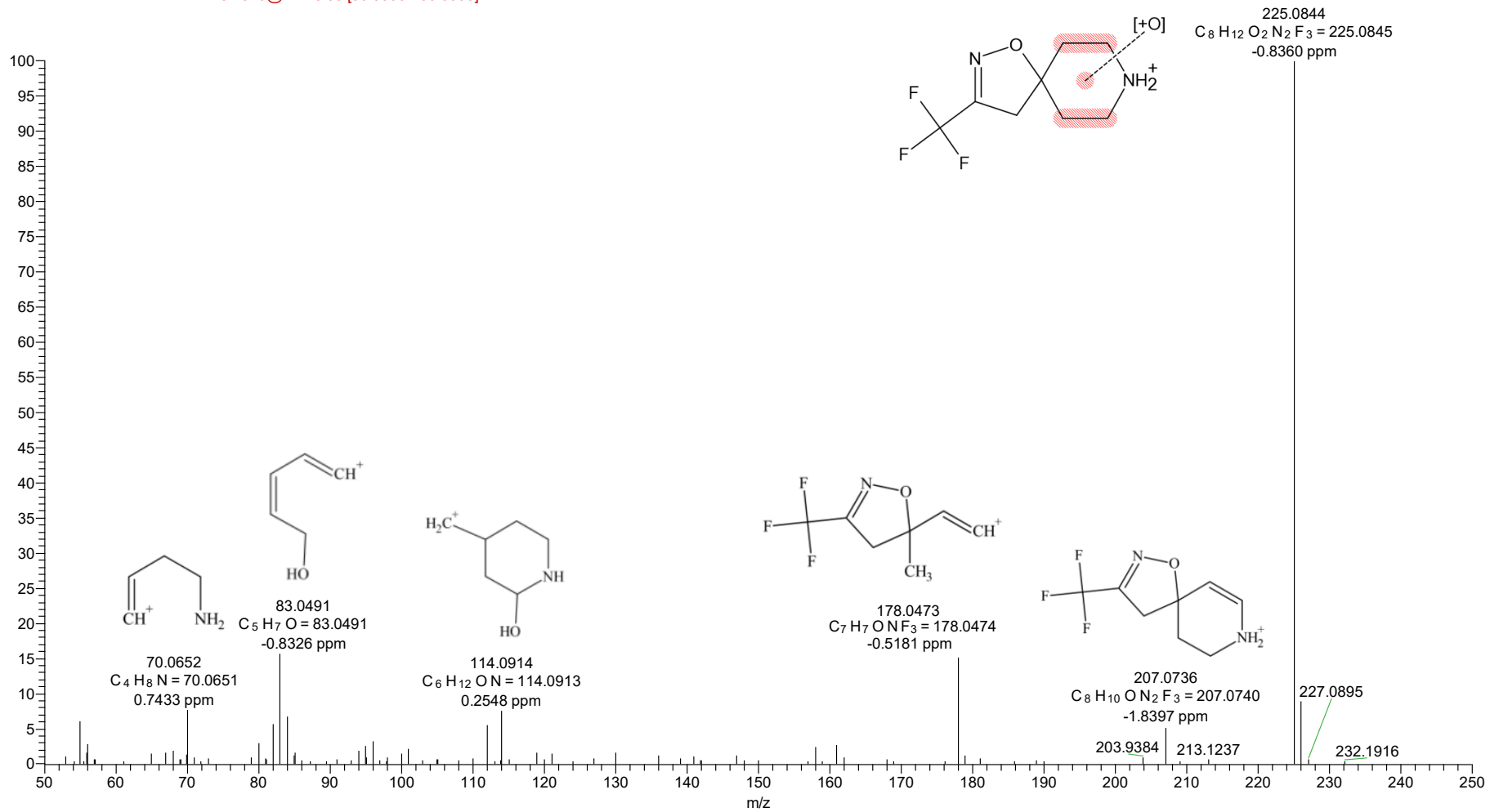


Figure S2: annotated MS/MS spectrum for metabolite M2 in unfractionated human urine.