

DMD #47092

Title Page

SHORT COMMUNICATION

**Down-Regulation of Brush Border Efflux Transporter
Expression in the Kidneys of Pregnant Mice**

Lindsay L. Yacovino, Christopher J. Gibson, and Lauren M. Aleksunes

Department of Pharmacology and Toxicology, Rutgers University Ernest Mario School of
Pharmacy, Piscataway, NJ, USA (Primary laboratory of origin, LLY, CJG, LMA)

Environmental and Occupational Health Sciences Institute, a Joint Institute of Robert Wood
Johnson Medical School and Rutgers University, Piscataway, NJ, USA (LMA)

DMD #47092

Running Title Page

Running Title: Renal Transporters in Pregnant Mice

Send Correspondence to:

Lauren Aleksunes, PharmD, PhD, Department of Pharmacology and Toxicology, Rutgers University, 170 Frelinghuysen Road. Piscataway, NJ, USA.

Phone: (848) 445-5518, Fax: (732) 445-0119, e-mail: aleksunes@eohsi.rutgers.edu

Number of Pages: 16 (excluding title pages and abstract)

Number of Tables: 1

Number of Supplementary Tables: 1

Number of Figures: 3

Number of Supplementary Figures: 2

Number of References: 29

Number of Words in Abstract: 159

Number of Words in Introduction: 535

Number of Words in Discussion: 1136

Non-Standard Abbreviations Abc, ATP-binding cassette; Bcrp, breast cancer resistance protein; GD, gestational day; Mate, multidrug and toxin extrusion transporter; Mdr, multidrug resistance protein; Mrp, multidrug resistance-associated protein; Oat, organic anion transporter; Oatp, organic anion transporting polypeptide; Oct, organic cation transporter; Octn, organic cation/carnitine transporter; PND, postnatal day; qPCR, quantitative PCR; Slc, solute carrier

DMD #47092

Abstract

Pregnancy increases the urinary excretion of chemicals in women and rodents. It is unknown whether the enhanced clearance of drugs during pregnancy involves changes in the expression of transporters that mediate chemical secretion and reabsorption. The purpose of this study was to quantify the mRNA and protein expression of efflux transporters in kidneys from virgin and pregnant mice on gestational days (GD) 7, 11, 14, 17, and postnatal days (PND) 1, 15, and 30 using qPCR, western blot, and immunofluorescence. Mdr1b mRNA as well as Mrp4 mRNA and protein levels decreased significantly by 25 to 75% throughout pregnancy and lactation. Similarly, Mrp2 and Mate1 mRNA expression were down-regulated 20 to 40% during mid- to late gestation but returned to control levels by PND15. In contrast, Mrp3 mRNA and protein increased 225% and 31%, respectively, at GD14. Coordinated down-regulation of brush border transporters Mate1, Mrp2, and Mrp4 and up-regulation of the basolateral Mrp3 transporter would reduce chemical secretion into urine.

DMD #47092

Introduction

Pregnancy-induced hormonal and hemodynamic changes significantly alter renal function. In humans and rodents, increases in cardiac output and renal vasodilation enlarge the size of the kidneys, elevate renal plasma flow by 50-85%, and raise the rate of glomerular filtration by 40-65% (Chapman et al., 1998; Conrad, 2004; Maynard and Thadhani, 2009; Cornelis et al., 2011). Clinically, pregnant women exhibit proteinuria, glucosuria, and aminoaciduria, which have been attributed to alterations in renal function (Davison and Dunlop, 1980; Cornelis et al., 2011). Together, hyperfiltration and increased blood flow to the kidneys alter maternal pharmacokinetics by elevating the renal clearance of chemicals during pregnancy.

Renal transporters are membrane-spanning proteins that play a critical role in facilitating the movement of toxins and drugs into the urine via secretion and into the blood via reabsorption. To enable these processes, transporters are prominently localized on both the apical (brush border) and basolateral membranes of proximal tubule epithelial cells. Transporters expressed within the kidneys are members of one of the two superfamilies: the solute carrier (SLC) and ATP-binding cassette (ABC) families. Efflux transporters that extrude chemicals from cells are members of both the ABC and SLC family and include the multidrug resistance-associated proteins (Mrps), multidrug resistance proteins (Mdrs), breast cancer resistance protein (Bcrp), and multidrug and toxin extrusion proteins (Mates) (reviewed in Klaassen and Aleksunes, 2010).

Recent studies have begun to explore transporter regulation in the kidneys during pregnancy and the subsequent postpartum period. In one study, expression of renal *Mdr1b* mRNA in mice decreased between mid- and late gestation, with little to no change at the protein level (Zhang et

DMD #47092

al., 2008). Additionally, expression of Bcrp in kidneys of mice was generally unchanged throughout pregnancy with an increase in mRNA and protein only during mid-gestation (Wang et al., 2006). Despite these prior investigations, there are no studies that have systematically investigated the coordinated expression of apical and basolateral renal transporters in pregnant rodents during different periods of pregnancy and lactation.

Studies investigating the influence of pregnancy on renal clearance have focused predominantly on overall maternal pharmacokinetic parameters. Clinically, the urinary clearance of drugs, such as ceftazidime, atenolol, and amoxicillin, is often elevated during pregnancy (Nathorst-Boos et al., 1995; Hebert et al., 2005; Andrew et al., 2007). The renal secretion and urinary clearance of the cardiac glycoside digoxin has also been shown to increase in a study of 13 pregnant patients (Hebert et al., 2008). Because digoxin is a substrate of the MDR1 transporter, the study by Hebert et al. indirectly suggested that elevated renal MDR1 activity may participate in the increased tubular secretion and clearance of digoxin during pregnancy (Kawahara et al., 1999; Hebert et al., 2008).

Because of the enhanced urinary clearance of chemicals in humans and rodents during pregnancy, we hypothesized that expression of efflux transporters would favor renal secretion and limit reabsorption. Therefore, the purpose of the current study was to quantify the mRNA and protein expression of efflux transporters in the kidneys of mice during pregnancy and lactation. Mice were selected for this analysis because of their increasing utilization in developmental toxicology studies. The results obtained from this study will provide new insight into the potential contribution of renal transporters to drug clearance during pregnancy in mice.

DMD #47092

Materials and Methods

Animals. Adult female and male C57BL/6 mice were obtained from Charles River Laboratories (Wilmington, MA) and mated overnight (denoting gestation day 0). Virgin control mice were not mated. Mice were provided food and water *ad libitum*. At gestation days (GD) 7, 11, 14, and 17 and postnatal days (PND) 1, 15, and 30, kidneys were collected from pregnant and time-matched virgin mice (n=3-4). Pups were housed with dams until weaning at PND21. Kidneys were snap frozen and stored at -80°C until used. The Institutional Animal Care and Use Committees at Rutgers University and the University of Kansas Medical Center approved these studies.

RNA Isolation and Real-time Quantitative PCR (qPCR). Total RNA was isolated from kidneys by phenol-chloroform extraction using RNA-Bee (Fisher, Pittsburgh, PA) and purified using the RNeasy mini kit (Qiagen, Valencia, CA). RNA concentrations were determined at 260 nm on a Nanodrop ND 2000 spectrophotometer (Thermoscientific, Wilmington, DE). Specific forward and reverse primers for each gene were added to 1 microgram of cDNA from each sample (Integrated DNA Technologies, Coralville, IA). Primer sequences are provided in Supplementary Table 1. Sybr Green was used to detect amplified products on an ABI 7900HT PCR system (Applied Biosystems, Carlsbad, CA). Ct values were converted to delta delta Ct values by comparing to a reference gene, ribosomal protein 13a (Rpl13a). An example of Ct values for Rpl13a mRNA in virgin, pregnant, and lactating mice are included in Supplementary Figure 1.

Western Blot Analysis. Kidney protein homogenates were prepared in 500 μ L of Sucrose-Tris buffer composed of 250 mM sucrose and 10 mM Tris-base at pH 7.5 and protease inhibitor cocktail (Sigma Chemical Co., St. Louis, MO). Forty micrograms of protein homogenates were

DMD #47092

electrophoretically separated on 4-12% BisTris gels and transferred to polyvinylidene fluoride membranes (Invitrogen, Carlsbad, CA). Equal protein loading was confirmed using β -actin (Ab8227, Abcam, Cambridge, MA). Antibodies included: Mrp1 (MRPr1, Alexis, Farmingdale, NY), Mrp2 (M₂III-5, Alexis), Mrp3 (M₃II-2 G. Scheffer, VU Medical Center, Amsterdam, the Netherlands), Mrp4 (M₄I-10, Alexis), Mrp5 (M₅I-10, G. Scheffer), Mrp6 (M₆II-68, G. Scheffer), Bcrp (BXP-53, Alexis), Mdr1a/b (C219, Abcam), and Mate1 (sc-138983, Santa Cruz). After incubation with secondary antibodies followed by SuperSignal West Dura chemiluminescent substrate (ThermoScientific, Pittsburgh, PA), antibody-protein complexes were detected and quantified using a Fluorchem imager (Alpha Innotech, San Leandro, CA).

Immunofluorescence Staining. Indirect immunofluorescence staining of efflux transporters on frozen mouse kidney sections was performed as previously described (Aleksunes et al., 2006; 2008). Images were acquired on a Zeiss Observer D1 microscope with a x-cite series 120Q fluorescent illuminator (Zeiss Inc., Thornwood, NY) and a Jenoptik camera with ProgRes CapturePro 2.8 software (Jenoptik, Easthampton, MA). Images were cropped and brightness and contrast were adjusted equally for each slide in Adobe Photoshop CS2 (San Jose, CA). All sections were both stained and imaged under uniform conditions for each antibody used. Negative controls without primary antibody were included in the analysis (data not shown).

Statistical Analysis. Statistical analysis was performed using GraphPad Prism© version 5 software (GraphPad, La Jolla, CA). Messenger RNA and protein expression were normalized to Rpl13A and β -actin, respectively. Data were then normalized to virgin controls at each time point (set to 1.0) and presented as mean ratios \pm standard error (SE). Differences among groups

DMD #47092

were evaluated by unpaired t-tests at each time point and p values ≤ 0.05 were considered statistically significant.

Results

Kidney Weights and Kidney:Body Weight Ratios in Pregnant and Lactating Mice.

Pregnancy had little effect on the absolute weight of the kidneys but did reduce the kidney:body weight ratio on GD7 and 17 (Supplementary Figure 2). Compared to virgins, lactation increased kidney weights on PND1 and 15; however, the relative kidney weights were unchanged.

Renal mRNA Expression of Efflux Transporters in Pregnant and Lactating Mice.

Efflux transporters are localized on the apical (Mdr1b, Mrp2, Mrp4, Mate1, and Bcrp, Figure 1A) and basolateral (Mrp1, 3, 5, and 6, Figure 1B) membranes of proximal tubule cells. Mdr1b and Mrp4 decreased as early as GD7 (Figure 1A). By GD11, Mate1 and Mrp2 mRNA also decreased by 25 to 40%. Expression of Mdr1b, Mrp2, Mrp4, and Mate1 mRNA remained reduced at PND1. The basolateral transporter Mrp1 mRNA decreased modestly on GD17 and PND1 (Figure 1B). Interestingly, Mrp3 mRNA increased 2.3-fold on GD14. Most transporter mRNA returned to virgin control levels by PND15, with the exception of Mrp3 and 4 which were still reduced at PND30. No change in Bcrp, Mrp5, or Mrp6 mRNA was observed during pregnancy and lactation.

Renal Protein Expression of Efflux Transporters in Pregnant and Lactating Mice.

The majority of mRNA changes occurred at GD14. Therefore, this time point was selected for western blot and immunofluorescence analysis. Similar to mRNA expression, protein levels of

DMD #47092

Mate1, Mrp2, and Mrp4 decreased significantly by 35 to 50% on GD14 (Figure 2A). Mrp3 protein expression increased 31% in kidneys of pregnant mice, although not statistically significant (Figure 2B). Bcrp, Mdr1b, Mrp1, 5, and 6 protein levels were unchanged at GD14 (Figure 2B).

Immunofluorescent staining of apical and basolateral efflux transporters in renal tissue sections are shown in Figures 3A and 3B, respectively. Mrp2, Mrp4, Mate1, and Bcrp staining was localized to the apical membranes of proximal tubule cells located in the S1 and S2 segments of the cortex (Figure 3A inset). Apical staining of Mrp2, Mrp4, and Mate1 proteins, but not Bcrp, was reduced in tissue sections from pregnant mice on GD14 (Figure 3A). Mrp1 and Mrp6 immunofluorescence was observed in the S1 or S2 segments of proximal tubule cells (Figure 3B). Staining of Mrp1, Mrp3, and Mrp6 was localized to the basolateral membrane (Figure 3B inset). Contrary to the uniform distribution of Mrp6 across the cortex, Mrp1 staining was isolated in individual tubules as well as glomeruli. Interestingly, Mrp3 staining was observed in tubules at the corticomedullary junction. Compared to virgin controls, staining of Mrp3 and Mrp6 was increased and modestly decreased, respectively, in tissue sections from pregnant mice (Figure 3B). No change in the intensity of Mrp1 staining was observed. There are no commercial antibodies that selectively stain Mdr1 protein in mouse tissues.

Discussion

The current study explored the renal mRNA and protein expression and localization of efflux transporters in pregnant and lactating mice. Pregnancy decreased Mdr1b, Mrp1, Mrp2, Mrp4, and Mate1 mRNAs and increased Mrp3 mRNA. Down-regulation of apical transporter mRNAs

DMD #47092

occurred at different time points in pregnancy and, in general, returned to baseline levels between PND1 and 30 with the exceptions of Mrp3 and Mrp4. Interestingly, Mrp3 up-regulation was limited to GD14 only. Protein analysis revealed reduced Mate1, Mrp2, and Mrp4 protein and enhanced Mrp3 protein on GD14. Likewise, Mrp6 immunofluorescence also revealed a trend for reduced Mrp6 protein in cortical proximal tubules. The findings of this study were opposite of the initial hypothesis that transporter expression patterns would favor secretion during pregnancy. Instead, significant reductions in the expression of efflux transporters on the apical membrane of proximal tubule cells would likely impair chemical secretion during pregnancy. Thus, the contribution of transporters to the elevated urinary clearance of compounds in mice during pregnancy appears to be minimal based upon mRNA and protein expression patterns in this study. In fact, the substantial down-regulation of efflux transporters on the brush-border membrane could be a compensatory change to prevent additional loss of nutrients and endogenous chemicals through the urine. Prevention of proximal tubule secretion via transporters may be a mechanism to counterbalance the physiological increases in glomerular filtration that occur during pregnancy. However, further investigation is needed to determine the exact reason for the down-regulation of apical efflux transporters during pregnancy, which may be unrelated to physiological changes.

In general, renal excretion of drugs is increased in pregnancy. Bcrp is a key transporter for the antidiabetic drug, glyburide (Zhou et al., 2008). Physicians are increasingly prescribing glyburide for pregnant women with diabetes because it does not appear to accumulate in the fetal compartment to a great extent, in large part due to Bcrp in the placenta (Pollex et al., 2008; Zhou et al., 2008). The systemic clearance of glyburide increases during pregnancy in rodents (Zhou et

DMD #47092

al., 2008). Subsequent work in knockout mice revealed minimal contribution of apical Bcrp to the elevated renal clearance of glyburide during pregnancy, a finding consistent with the largely unchanged expression of Bcrp in this study (Zhou et al., 2010). This suggests a more dominant role for glomerular filtration in elevating overall renal clearance of glyburide during pregnancy (Zhou et al., 2010). Taken together, the apical efflux transporter patterns of expression do not appear to be a contributing factor to the elevated renal excretion of drugs commonly seen during pregnancy. Alternatively, pregnant mice may not be a suitable model for humans in investigating the renal clearance of some chemicals. Nonetheless, translational studies are needed to determine whether human transporters are altered in a similar fashion to mice during pregnancy.

Uptake transporters are also important in urinary secretion and reabsorption. The mRNA expression of various SLC transporters was also quantified in this study (Table 1). In general, there were modest changes in expression of the organic anion transporters (Oats) as well as the organic cation and carnitine transporters (Oct/Octns). Similar to efflux transporters, mRNA expression of several uptake transporters was lower in pregnant mice. Oat1, Oat3, Oatp1a6, and Octn1 mRNA decreased modestly throughout pregnancy. Additionally, a decline in mRNA expression was noted at PND1 for Oat3, Oat5, Oatp1a6, Oatp3a1, Octn1, and Octn2 similar to efflux transporters. Because these transporters are expressed on the apical and basolateral membranes, there may be a concerted effort to reduce not only secretion, but also reabsorption, during pregnancy. However, some uptake transporters including Oct1, Oat2, Pept1, and Asbt were elevated during pregnancy suggesting that the regulation of uptake transporters may be more complicated than efflux transporters.

DMD #47092

Sex hormones, such as estradiol and testosterone, have been shown to participate in the regulation of efflux transporter expression. Administration of 17 β -estradiol to gonadectomized or hypophysectomized mice increases Mrp3 mRNA expression in kidneys (Maher et al., 2006). *In silico* analysis of the 5' flanking region of the mouse *Mrp3* promoter has identified two putative binding sites for estrogen receptors, although the functional activity of these sites is unknown (Maher et al., 2006). Likewise, administration of the semisynthetic estrogen, ethinylestradiol, to rats increases Mrp3 and reduces Mrp2 protein expression in the liver (Ruiz et al., 2006). In addition to estradiol, levels of testosterone are also increased in mice during pregnancy (Barkley et al., 1979). This may be important in the down-regulation of Mrp4 mRNA and protein in pregnant mice. Exogenous administration of 5 α -dihydroxytestosterone to gonadectomized mice markedly represses Mrp4 mRNA expression, possibly through an androgen response element in the 5' flanking region (Maher et al., 2006). These studies support a role for elevated estrogen levels during pregnancy to up-regulate Mrp3 expression, and possibly repress Mrp2, and for testosterone to repress Mrp4 levels.

Pregnancy alters the expression of transporters not only in the kidneys, but also in other tissues such as the maternal liver. During late pregnancy, the liver expression of Mrp2 protein and Oatp1a4 mRNA as well as the bile acid transporters bile salt export pump and sodium-taurocholate cotransporting polypeptide is decreased in rats (Cao et al., 2001). Likewise, we have observed down-regulation of hepatic uptake (Oatps and Oct1) and efflux (Mrp2, Mdr1, Abcg5/8) transporters during pregnancy in mice (data not shown). Interestingly, Mrp4 and Oat2 mRNA were increased in the livers of pregnant mice. While Bcrp mRNA is decreased in the livers of pregnant C57BL/6 mice, no change in protein expression can be observed (data not

DMD #47092

shown). These data are in conflict with a report by Wang et al. (2006) in which they observed up-regulation of Bcrp mRNA and protein in the livers and kidneys of pregnant FVB mice (Wang et al., 2006). These divergent findings may reflect strain differences in the regulation of transporters during pregnancy.

In conclusion, the mRNA and protein expression of renal efflux transporters in mice was altered during pregnancy. Significant down-regulation in mRNA expression of the apical efflux transporters Mdr1b, Mrp2, Mrp4, and Mate1 was observed. Marked reduction in protein expression of Mate1, Mrp2, and Mrp4 suggested minimal involvement in the elevated urinary clearance of compounds typically observed in pregnancy. Further functional studies in brush border membrane preparations for substrates of these transporters, such as metformin (Terada et al., 2006) and anti-retroviral drugs (Schuetz et al., 1999; Huisman et al., 2002), should be performed to determine the relevance of the observed protein changes. These chemicals are renally-eliminated and have been under investigation for prescribing during pregnancy (Unadkat et al., 2007; Weinberg et al., 2011; Silva et al., 2012). Likewise, circulating bile acids are increased during pregnancy, and their renal secretion may be reduced during pregnancy because of decreased Mrp4 expression (Rius et al., 2006). Nonetheless, this study suggests that changes in the expression of renal transporters are unlikely to contribute to the enhanced urinary clearance of chemicals in rodents during pregnancy.

DMD #47092

Acknowledgements

The authors would like to thank Dr. Curtis Klaassen for providing kidneys for the mRNA time-course experiments, Drs. Bruno Steiger and George Scheffer for antibodies, Drs. Angela Slitt and Jason Richardson for qPCR primer sequences, and graduate students and fellows of the Aleksunes laboratory for their contributions to this project.

Authorship Contributions

Participated in research design: Yacovino, Aleksunes

Conducted experiments: Yacovino, Gibson

Contributed new reagents or analytic tools: Aleksunes

Performed data analysis: Yacovino, Gibson

Wrote or contributed to the writing of the manuscript: Yacovino, Aleksunes

DMD #47092

References

- Aleksunes LM, Cui Y and Klaassen CD (2008) Prominent expression of xenobiotic efflux transporters in mouse extraembryonic fetal membranes compared with placenta. *Drug Metab Dispos* **36**:1960-1970.
- Aleksunes LM, Scheffer GL, Jakowski AB, Pruijboom-Brees IM and Manautou JE (2006) Coordinated expression of multidrug resistance-associated proteins (Mrps) in mouse liver during toxicant-induced injury. *Toxicol Sci* **89**:370-379.
- Andrew MA, Easterling TR, Carr DB, Shen D, Buchanan ML, Rutherford T, Bennett R, Vicini P and Hebert MF (2007) Amoxicillin pharmacokinetics in pregnant women: modeling and simulations of dosage strategies. *Clin Pharmacol Ther* **81**:547-556.
- Barkley MS, Geschwind, II and Bradford GE (1979) The gestational pattern of estradiol, testosterone and progesterone secretion in selected strains of mice. *Biol Reprod* **20**:733-738.
- Cao J, Huang L, Liu Y, Hoffman T, Stieger B, Meier PJ and Vore M (2001) Differential regulation of hepatic bile salt and organic anion transporters in pregnant and postpartum rats and the role of prolactin. *Hepatology* **33**:140-147.
- Chapman AB, Abraham WT, Zamudio S, Coffin C, Merouani A, Young D, Johnson A, Osorio F, Goldberg C, Moore LG, Dahms T and Schrier RW (1998) Temporal relationships between hormonal and hemodynamic changes in early human pregnancy. *Kidney Int* **54**:2056-2063.
- Conrad KP (2004) Mechanisms of renal vasodilation and hyperfiltration during pregnancy. *J Soc Gynecol Investig* **11**:438-448.

DMD #47092

Cornelis T, Odutayo A, Keunen J and Hladunewich M (2011) The kidney in normal pregnancy and preeclampsia. *Semin Nephrol* **31**:4-14.

Davison JM and Dunlop W (1980) Renal hemodynamics and tubular function normal human pregnancy. *Kidney Int* **18**:152-161.

Hebert MF, Carr DB, Anderson GD, Blough D, Green GE, Brateng DA, Kantor E, Benedetti TJ and Easterling TR (2005) Pharmacokinetics and pharmacodynamics of atenolol during pregnancy and postpartum. *J Clin Pharmacol* **45**:25-33.

Hebert MF, Easterling TR, Kirby B, Carr DB, Buchanan ML, Rutherford T, Thummel KE, Fishbein DP and Unadkat JD (2008) Effects of pregnancy on CYP3A and P-glycoprotein activities as measured by disposition of midazolam and digoxin: a University of Washington specialized center of research study. *Clin Pharmacol Ther* **84**:248-253.

Huisman MT, Smit JW, Crommentuyn KM, Zelcer N, Wiltshire HR, Beijnen JH and Schinkel AH (2002) Multidrug resistance protein 2 (MRP2) transports HIV protease inhibitors, and transport can be enhanced by other drugs. *AIDS* **16**:2295-2301.

Kawahara M, Sakata A, Miyashita T, Tamai I and Tsuji A (1999) Physiologically based pharmacokinetics of digoxin in mdr1a knockout mice. *J Pharm Sci* **88**:1281-1287.

Klaassen CD and Aleksunes LM (2010) Xenobiotic, bile acid, and cholesterol transporters: function and regulation. *Pharmacol Rev* **62**:1-96.

Maher JM, Cheng X, Tanaka Y, Scheffer GL and Klaassen CD (2006) Hormonal regulation of renal multidrug resistance-associated proteins 3 and 4 (Mrp3 and Mrp4) in mice. *Biochem Pharmacol* **71**:1470-1478.

Maynard SE and Thadhani R (2009) Pregnancy and the kidney. *J Am Soc Nephrol* **20**:14-22.

DMD #47092

- Nathorst-Boos J, Philipson A, Hedman A and Arvisson A (1995) Renal elimination of ceftazidime during pregnancy. *Am J Obstet Gynecol* **172**:163-166.
- Pollex E, Lubetsky A and Koren G (2008) The role of placental breast cancer resistance protein in the efflux of glyburide across the human placenta. *Placenta* **29**:743-747.
- Rius M, Hummel-Eisenbeiss J, Hofmann AF and Keppler D (2006) Substrate specificity of human ABCC4 (MRP4)-mediated cotransport of bile acids and reduced glutathione. *Am J Physiol Gastrointest Liver Physiol* **290**:G640-649.
- Ruiz ML, Villanueva SS, Luquita MG, Vore M, Mottino AD and Catania VA (2006) Ethynylestradiol increases expression and activity of rat liver MRP3. *Drug Metab Dispos* **34**:1030-1034.
- Schuetz JD, Connelly MC, Sun D, Paibir SG, Flynn PM, Srinivas RV, Kumar A and Fridland A (1999) MRP4: A previously unidentified factor in resistance to nucleoside-based antiviral drugs. *Nat Med* **5**:1048-1051.
- Silva JC, Fachin DR, Coral ML and Bertini AM (2012) Perinatal impact of the use of metformin and glyburide for the treatment of gestational diabetes mellitus. *J Perinat Med* **40**:225-228.
- Terada T, Masuda S, Asaka J, Tsuda M, Katsura T and Inui K (2006) Molecular cloning, functional characterization and tissue distribution of rat H⁺/organic cation antiporter MATE1. *Pharm Res* **23**:1696-1701.
- Unadkat JD, Wara DW, Hughes MD, Mathias AA, Holland DT, Paul ME, Connor J, Huang S, Nguyen BY, Watts DH, Mofenson LM, Smith E, Deutsch P, Kaiser KA and Tuomala RE (2007) Pharmacokinetics and safety of indinavir in human immunodeficiency virus-infected pregnant women. *Antimicrob Agents Chemother* **51**:783-786.

DMD #47092

- Wang H, Wu X, Hudkins K, Mikheev A, Zhang H, Gupta A, Unadkat JD and Mao Q (2006) Expression of the breast cancer resistance protein (Bcrp1/Abcg2) in tissues from pregnant mice: effects of pregnancy and correlations with nuclear receptors. *Am J Physiol Endocrinol Metab* **291**:E1295-1304.
- Weinberg A, Forster-Harwood J, Davies J, McFarland EJ, Pappas J, Kinzie K, Barr E, Paul S, Salbenblatt C, Soda E, Vazquez A and Levin MJ (2011) Safety and tolerability of antiretrovirals during pregnancy. *Infect Dis Obstet Gynecol* **2011**:867674.
- Zhang H, Wu X, Wang H, Mikheev AM, Mao Q and Unadkat JD (2008) Effect of pregnancy on cytochrome P450 3a and P-glycoprotein expression and activity in the mouse: mechanisms, tissue specificity, and time course. *Mol Pharmacol* **74**:714-723.
- Zhou L, Narahariseti SB, Wang H, Unadkat JD, Hebert MF and Mao Q (2008) The breast cancer resistance protein (Bcrp1/Abcg2) limits fetal distribution of glyburide in the pregnant mouse: an Obstetric-Fetal Pharmacology Research Unit Network and University of Washington Specialized Center of Research Study. *Mol Pharmacol* **73**:949-959.
- Zhou L, Zhang Y, Hebert MF, Unadkat JD and Mao Q (2010) Increased glyburide clearance in the pregnant mouse model. *Drug Metab Dispos* **38**:1403-1406.

DMD #47092

Footnotes.

Financial Support. This work was supported by the National Institutes of Health National Institute of Diabetes and Digestive and Kidney Diseases [Grant DK080774] and the National Institutes of Health National Institute of Environmental Health Sciences [Grants ES020522, ES005022, ES007148].

Reprint Requests. Lauren Aleksunes, PharmD, PhD, Rutgers University, Department of Pharmacology and Toxicology, 170 Frelinghuysen Road, Piscataway, NJ, USA. Phone: (848) 445-5518, Fax: (732) 445-0119. E-mail: aleksunes@ehsi.rutgers.edu

DMD #47092

Legends for Figures

Figure 1. Renal mRNA expression of efflux transporters in pregnant and lactating mice.

Total RNA was isolated from kidneys and mRNA levels were quantified using qPCR. mRNA expression of (A) apical and (B) basolateral efflux transporters is shown. Data were normalized to virgin controls at each time point (set to 1.0) and presented as mean relative expression \pm SE. Light gray bars represent pregnant mice and dark gray bars represent lactating mice. Asterisks (*) represent a statistical difference compared to time-matched virgin mice ($p \leq 0.05$).

Figure 2. Renal protein expression of efflux transporters in pregnant and lactating mice.

Protein expression of (A) apical and (B) basolateral efflux transporters on GD14 is shown. Immunoblots are presented in the upper portion and equal protein loading was confirmed using β -actin. Protein band intensity was quantified by densitometry. Data were normalized to virgin controls and presented as mean relative protein expression \pm SE. Asterisks (*) represent a statistical difference compared to time-matched virgin mice ($p \leq 0.05$).

Figure 3. Immunofluorescent detection of renal efflux transporters in pregnant and lactating mice.

Immunofluorescent detection of (A) apical and (B) basolateral efflux transporters in renal tissues of virgin and pregnant mice at GD14. Indirect immunofluorescence of transporters (*green*) was conducted on kidney cryosections (6 μ m) obtained from gestation day 14 pregnant mice and time-matched virgin controls. Images of cortical regions are shown at 10X magnification. Images were cropped, enlarged, and provided as insets.

Table 1. Renal Efflux and Uptake Transporter mRNA Changes During Gestational and Postnatal Periods¹.

	Gestational				Postnatal			
	Days	7	11	14	17	1	15	30
Efflux								
Abca1		1.06 ± 0.07	0.72 ± 0.05	0.80 ± 0.07	0.80 ± 0.04	1.20 ± 0.37	1.46 ± 0.24	1.15 ± 0.05
Osta		0.99 ± 0.12	1.15 ± 0.17	0.70 ± 0.19	0.81 ± 0.05	1.31 ± 0.35	0.56 ± 0.03*	1.24 ± 0.20
Ostβ		0.77 ± 0.07*	0.89 ± 0.06	0.73 ± 0.04*	1.64 ± 0.22	1.02 ± 0.21	0.76 ± 0.01	0.93 ± 0.05
Uptake								
Oat1		0.76 ± 0.01*	0.66 ± 0.09	0.73 ± 0.08	0.66 ± 0.07*	0.86 ± 0.09	1.02 ± 0.12	0.86 ± 0.17
Oat2		0.79 ± 0.08	1.19 ± 0.16	1.88 ± 0.37	1.25 ± 0.07*	1.38 ± 0.08	1.07 ± 0.18	1.05 ± 0.14
Oat3		0.74 ± 0.05*	0.88 ± 0.02	0.75 ± 0.13	0.74 ± 0.02*	0.83 ± 0.01	0.70 ± 0.08	1.02 ± 0.18
Oat5		1.31 ± 0.12	1.33 ± 0.23	1.46 ± 0.18	0.95 ± 0.10	0.67 ± 0.04	1.21 ± 0.13	0.93 ± 0.09
Urat1		0.73 ± 0.06	0.56 ± 0.06*	1.22 ± 0.36	0.83 ± 0.19	0.70 ± 0.14	1.17 ± 0.04	1.15 ± 0.09
Oatp1a6		0.65 ± 0.05*	0.78 ± 0.05	0.75 ± 0.08	0.60 ± 0.04*	0.43 ± 0.06*	1.16 ± 0.07	1.19 ± 0.15
Oatp2b1		0.89 ± 0.04	0.77 ± 0.10	1.34 ± 0.12	0.95 ± 0.06	0.65 ± 0.19	1.46 ± 0.07	0.91 ± 0.06
Oatp3a1		1.19 ± 0.07	0.98 ± 0.05	1.11 ± 0.06	0.84 ± 0.03*	0.68 ± 0.04	1.07 ± 0.10	0.90 ± 0.09
Oatp4c1		1.09 ± 0.16	0.76 ± 0.16	0.58 ± 0.06*	0.76 ± 0.07	1.04 ± 0.15	1.24 ± 0.27	1.21 ± 0.06
Oct1		0.79 ± 0.03*	1.08 ± 0.04	1.04 ± 0.05	1.14 ± 0.01*	1.06 ± 0.05	0.74 ± 0.03	1.21 ± 0.05*
Oct2		0.86 ± 0.01	0.85 ± 0.10	1.11 ± 0.10	0.81 ± 0.04	0.83 ± 0.03	0.94 ± 0.22	0.97 ± 0.04
Oct3		0.91 ± 0.24	0.81 ± 0.20	0.69 ± 0.10	0.86 ± 0.15	1.04 ± 0.33	0.44 ± 0.17	1.13 ± 0.06
Octn1		0.61 ± 0.04*	0.80 ± 0.09	0.67 ± 0.04*	0.94 ± 0.07	0.67 ± 0.04*	0.57 ± 0.04*	0.97 ± 0.04
Octn2		0.71 ± 0.05*	1.26 ± 0.11	0.92 ± 0.10	1.27 ± 0.15	0.79 ± 0.04*	0.81 ± 0.03	0.91 ± 0.04
Pept1		1.18 ± 0.08	1.18 ± 0.10	1.52 ± 0.12*	0.83 ± 0.25	1.30 ± 0.18	1.10 ± 0.14	1.06 ± 0.18
Pept2		1.27 ± 0.07	1.03 ± 0.15	0.98 ± 0.13	0.70 ± 0.12	0.94 ± 0.21	1.03 ± 0.21	0.94 ± 0.08
Ent1		0.55 ± 0.05 *	0.89 ± 0.17	0.93 ± 0.08	1.24 ± 0.28	0.95 ± 0.10	1.25 ± 0.25	0.80 ± 0.11
Ent2		1.32 ± 0.10	1.05 ± 0.07	0.84 ± 0.08	1.36 ± 0.47	0.72 ± 0.08*	0.98 ± 0.26	0.80 ± 0.05
Cnt1		1.20 ± 0.06	0.94 ± 0.06	0.80 ± 0.11	0.78 ± 0.03	0.70 ± 0.15	0.84 ± 0.06	0.99 ± 0.04
Cnt2		1.06 ± 0.09	0.56 ± 0.08	0.58 ± 0.10*	0.58 ± 0.02*	0.86 ± 0.46	0.63 ± 0.20	0.99 ± 0.13
Asbt		1.26 ± 0.22	1.50 ± 0.07 *	1.26 ± 0.10	1.12 ± 0.29	0.67 ± 0.02	0.96 ± 0.18	0.71 ± 0.17

¹ Data were normalized to Rpl13a mRNA expression and normalized to virgin controls at each time point (set to 1.0) (n= 3-4 animals). Data are presented as mean ratios ± SE. Asterisks (*) represent differences among groups by unpaired t-tests at each time point (p values ≤ 0.05). Oatp1a1, Mdr1a, Mate2, and Cnt3 were too low to be quantified.

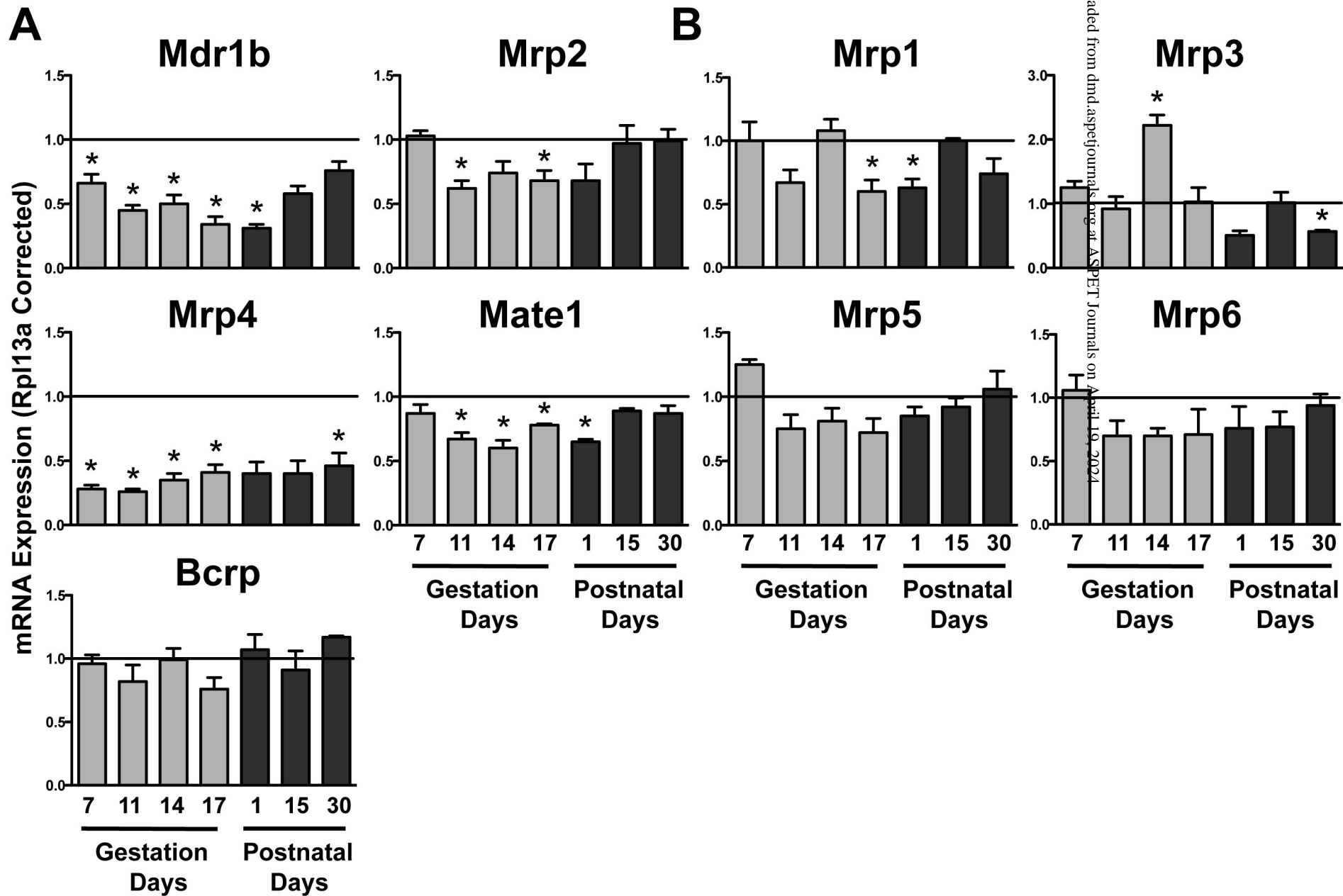


Figure 1

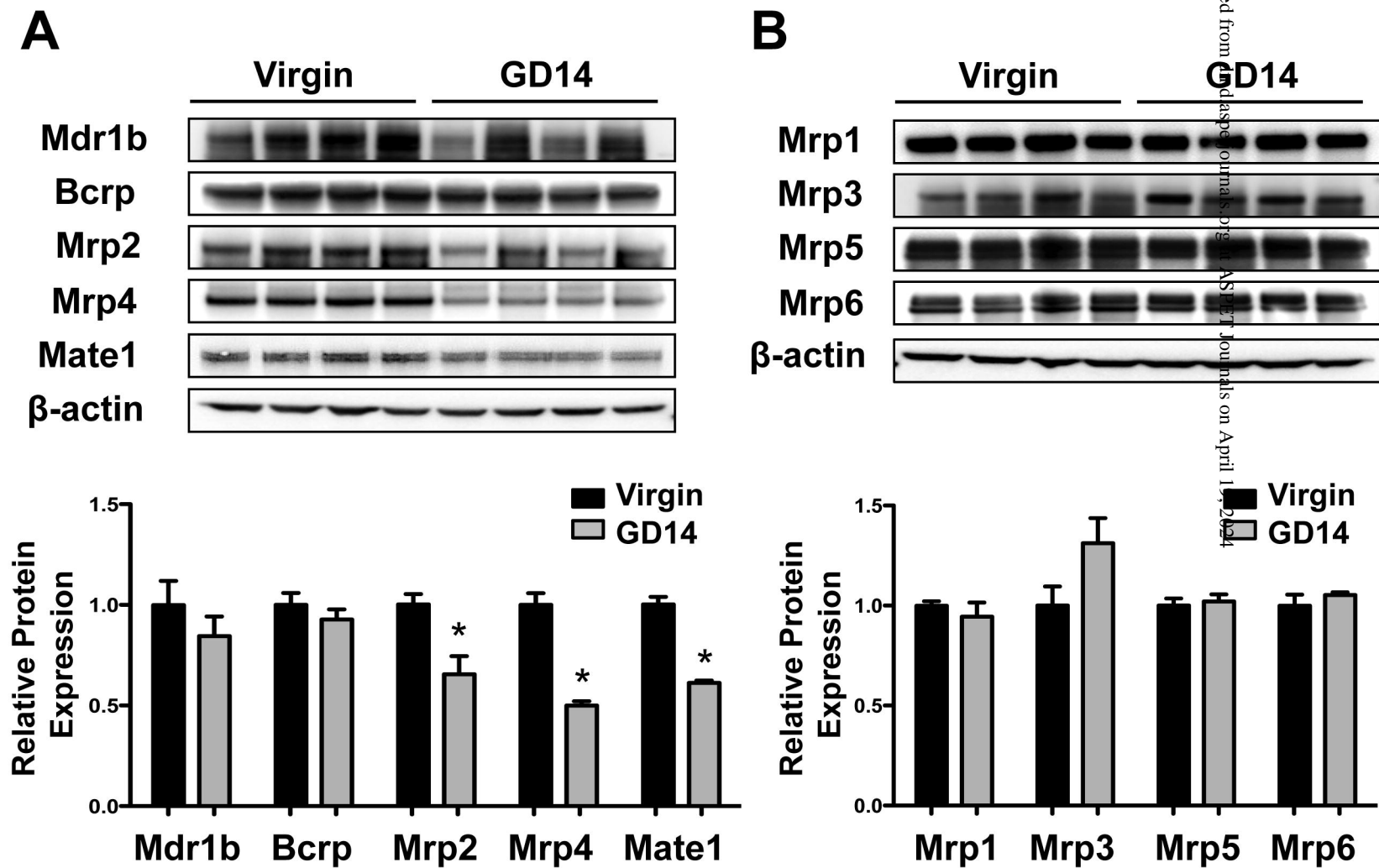


Figure 2

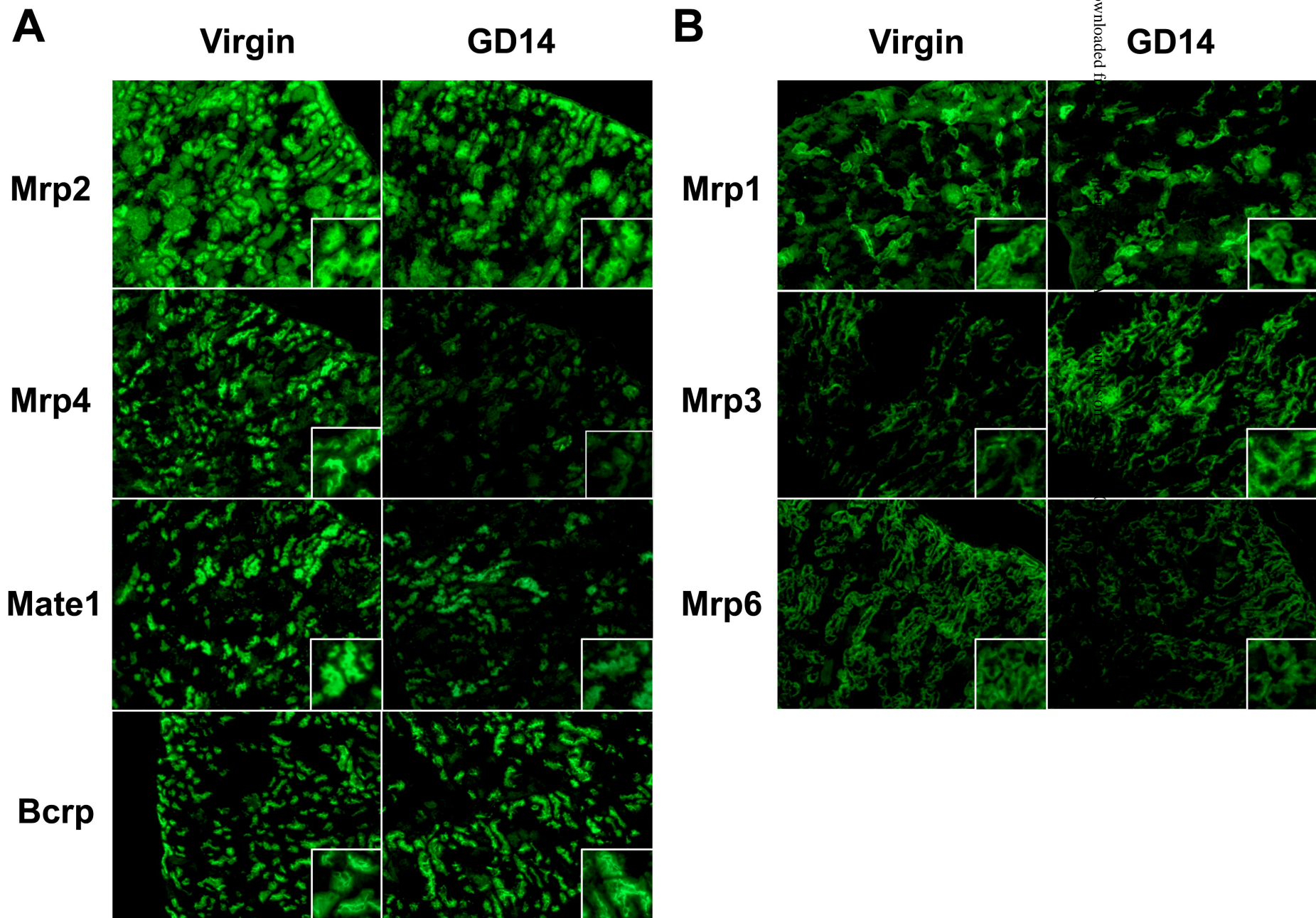


Figure 3