

DMD # 83907

1. Title Page

Altered Hepatobiliary Disposition of Tolvaptan and Selected Tolvaptan Metabolites in a Rodent Model of Polycystic Kidney Disease

James J. Beaudoin, Jacqueline Bezençon, Yanguang Cao, Katsuhiko Mizuno, Sharin E. Roth, William J. Brock and Kim L.R. Brouwer

Division of Pharmacotherapy and Experimental Therapeutics, UNC Eshelman School of Pharmacy, University of North Carolina, Chapel Hill, North Carolina (J.J.B., J.B., Y.C., K.L.R.B.); Tokushima Research Institute, Otsuka Pharmaceutical Co., Ltd., Tokushima, Japan (K.M.); Otsuka Pharmaceutical Development & Commercialization, Inc., Rockville, Maryland (S.E.R.); and Brock Scientific Consulting, LLC, Montgomery Village, Maryland (W.B.)

DMD # 83907

2. Running Title Page

a) Running title (58 out of 60 characters including spaces): Disposition of Tolvaptan and Metabolites in PCK Rat Livers

b) Corresponding author: Kim L. R. Brouwer, UNC Eshelman School of Pharmacy, The University of North Carolina at Chapel Hill, CB #7569 Kerr Hall, Chapel Hill, NC 27599-7569. Phone: (919) 962-7030. Fax: (919) 962-0644. E-mail: kbrouwer@email.unc.edu

c) Number of text pages: 48

Number of tables: 1 (main document) + 2 (supplemental)

Number of figures: 7 (main document) + 1 (supplemental) + 1 visual abstract

Number of references: 43 (main document)

Number of words in the Abstract: 246 out of 250 used.

Number of words in the Introduction: 749 out of 750 used.

Number of words in the Discussion: 882 out of 1500 used.

d) Abbreviations:

ADPKD: autosomal dominant polycystic kidney disease

ALT: alanine aminotransferase

DMD # 83907

ARPKD: autosomal recessive polycystic kidney disease

BSEP: bile salt export pump

CI: confidence interval

CL_{03,07}: formation clearance of DM-4103+DM-4107 from tolvaptan

CL_{Bile}: biliary clearance of tolvaptan

CL_{Bile,03,07}: biliary clearance of DM-4103+DM-4107

CL_{BL}: basolateral clearance of tolvaptan

CL_{BL,03,07}: basolateral clearance of DM-4103+DM-4107

CL_{Met}: formation clearance of other metabolites from tolvaptan

CL_{UP}: uptake clearance of tolvaptan

IC₅₀: half maximal inhibitory concentration

IPL: isolated perfused liver

K_{Lag,Bile}: transit rate constant for the biliary excretion of tolvaptan

K_{Lag,Bile,03,07}: transit rate constant for the biliary excretion of DM-4103+DM-4107

LC-MS/MS: liquid chromatography–tandem mass spectroscopy

LDH: lactate dehydrogenase

LLOQ: lower limit of quantitation

MRP: multidrug resistance-associated protein

DMD # 83907

NTCP: Na⁺-taurocholate co-transporting polypeptide

P-gp: P-glycoprotein

PCK: polycystic kidney

PKD: polycystic kidney disease

PKD1/2: Polycystic Kidney Disease 1/2

PKHD1: Polycystic Kidney and Hepatic Disease 1

PLD: polycystic liver disease

TEMPO: Tolvaptan Efficacy and Safety in Management of Autosomal Dominant Polycystic Kidney Disease and Its Outcomes

TVP: tolvaptan

ULN: upper limit of normal

WT: wild-type (Sprague-Dawley rats)

DMD # 83907

3. Abstract

Tolvaptan, a vasopressin V₂-receptor antagonist, has demonstrated efficacy in slowing kidney function decline in patients with autosomal dominant polycystic kidney disease (ADPKD). In the pivotal clinical trial, the incidence of elevated liver enzymes was higher in patients receiving tolvaptan compared to placebo. Adjudication by a panel of expert hepatologists concluded a causal link of tolvaptan to liver injury in patients with ADPKD. An *ex situ* isolated perfused liver (IPL) study of tolvaptan disposition was undertaken in a rodent model of ADPKD, the polycystic kidney (PCK) rat ($n=5$), and compared to wild-type Sprague-Dawley (WT) rats ($n=6$). Livers were perfused with tolvaptan, followed by a tolvaptan-free washout phase. Total recovery (mean \pm S.D.% dose; PCK vs. WT) of tolvaptan and two metabolites, DM-4103 and DM-4107, quantified by LC-MS/MS, was 58.14 \pm 24.72% vs. 43.40 \pm 18.11% in liver, 20.10 \pm 9.15% vs. 21.17 \pm 12.51% in outflow perfusate, and 0.08 \pm 0.01% vs. 0.39 \pm 0.32% in bile. DM-4103 recovery (mean \pm S.D.% dose) was decreased in PCK vs. WT bile (<0.01 \pm <0.01 vs. 0.02 \pm 0.01%; $p=0.0037$), and DM-4107 recovery was increased in PCK vs. WT outflow perfusate (1.60 \pm 0.57% vs. 0.43 \pm 0.29%; $p=0.0017$). A pharmacokinetic compartmental model assuming first-order processes was developed to describe the rate vs. time profiles of tolvaptan and DM-4103+DM-4107 in rat IPLs. The model-derived estimate of tolvaptan's biliary clearance was significantly decreased in PCK compared to WT IPLs. The model predicted greater hepatocellular concentrations of tolvaptan and DM-4103+DM-4107 in PCK compared to WT IPLs. Increased hepatocellular exposure to tolvaptan and metabolites may contribute to the hepatotoxicity in patients with ADPKD treated with tolvaptan.

DMD # 83907

4. Visual Abstract (Supplemental File)

DMD # 83907

5. Introduction

Polycystic kidney disease (PKD) is a class of ciliopathies arising from primary cilium defects in epithelial cells of various organs resulting in the development of fluid-filled cysts (Igarashi and Somlo, 2007). Autosomal dominant polycystic kidney disease (ADPKD) is the most common type of PKD and hereditary form of kidney disease (Torres et al., 2007), and a significant health concern that leads to kidney failure in approximately one-half of affected individuals (Grantham, 2008). ADPKD is primarily characterized by the progressive development of renal cysts and declining kidney function, but extrarenal cysts are common in this multi-organ disorder. The liver is affected in more than 80% of patients with ADPKD, leading to polycystic liver disease (PLD) (Grantham, 2008). Despite complications arising from hepatic cysts such as cyst rupture, infection and obstruction of bile ducts, liver function is thought to be preserved in PLD (Cnossen and Drenth, 2014).

ADPKD arises from mutations in the Polycystic Kidney Disease 1 (*PKD1*) or 2 (*PKD2*) gene, encoding polycystin 1 and 2, respectively, which together form a receptor-channel complex (Kaimori and Germino, 2008). The illness has similarities to the less prevalent autosomal recessive polycystic kidney disease (ARPKD), which is caused by mutations in Polycystic Kidney and Hepatic Disease 1 (*PKHD1*), encoding the membrane-associated receptor-like protein fibrocystin/polyductin (Kim et al., 2008). The polycystic kidney (PCK) rat, a rodent model of human PKD that spontaneously arose in a colony of Sprague-Dawley rats, harbors a mutation in the *Pkhd1* gene, similar to ARPKD (Katsuyama et al., 2000; Masyuk et al., 2004). Since the natural history and the hepatorenal abnormalities in PCK disease and ADPKD are similar, this rodent model has been used to study ADPKD (Lager et al., 2001; Sabbatini et al., 2014).

DMD # 83907

Tolvaptan (TVP), an oral, selective vasopressin V_2 -receptor antagonist, has demonstrated efficacy in slowing kidney function decline in patients with ADPKD. A concerning finding in the pivotal clinical trial Tolvaptan Efficacy and Safety in Management of Autosomal Dominant Polycystic Kidney Disease and Its Outcomes (TEMPO) 3:4 was the higher incidence of elevated alanine aminotransferase (ALT) in patients receiving TVP (4.9%) compared to placebo (1.2%), with ALT $>2.5x$ upper limit of normal (ULN) at any trial visit (Torres et al., 2012). Adjudication by a panel of hepatologists concluded a causal link of TVP to liver injury in patients with ADPKD, and in TEMPO 3:4 and an open-label extension trial, TEMPO 4:4, three patients met Hy's law criteria (Watkins et al., 2015). Similar percentages (5.6% vs. 1.2%, TVP vs. placebo, respectively) in ALT elevations ($>3xULN$) but no additional Hy's law cases were observed in a second pivotal trial, Replicating Evidence of Preserved Renal Function: an Investigation of Tolvaptan Safety and Efficacy in ADPKD (REPRISE) trial with monthly monitoring of liver enzymes (Torres et al., 2017).

TVP is primarily metabolized by cytochrome P450 3A4 (CYP3A4) (Shoaf et al., 2011); CYP3A5, CYP2D6, UGT2B7 and UGT2B17 also contribute to TVP metabolite formation (Mazzarino et al., 2017). Numerous TVP metabolites have been identified, but most studies focus on the two major metabolites DM-4103 and DM-4107 (Jiang et al., 2016; Lu et al., 2016). In humans, the main circulating metabolite is DM-4103, while a substantial portion of TVP is excreted in urine and feces as DM-4107 (Sorbera et al., 2002). Interactions of TVP, DM-4103 and DM-4107 with various human hepatic transporters have been investigated. DM-4103 is a relatively strong inhibitor of Na^+ -taurocholate co-transporting polypeptide [NTCP/*SLC10A1*; half maximal inhibitory

DMD # 83907

concentration (IC_{50} value)=16.3 μ M], bile salt export pump (BSEP/*ABCB11*; IC_{50} =4.15 μ M) and multidrug resistance-associated protein 4 (MRP4/*ABCC4*; IC_{50} =4.26 μ M), while TVP was a moderate inhibitor of BSEP (IC_{50} =31.6 μ M), and DM-4107 was a moderate inhibitor of MRP4 (IC_{50} =37.9 μ M) (Slizgi et al., 2016). Furthermore, TVP is a substrate and competitive inhibitor of P-glycoprotein (P-gp, *MDR1/ABCB1*) (Shoaf et al., 2011). Currently, it remains unclear whether TVP, DM-4103, DM-4107, or other metabolites are responsible for the elevated liver enzymes observed in the ADPKD clinical trials.

The isolated perfused liver (IPL) is a physiologically relevant *ex situ* model used to assess hepatobiliary drug clearance (Brouwer and Thurman, 1996), and evaluate the hepatic transport and metabolic properties of a compound (Booth et al., 1998; Xiong et al., 2000; Chandra et al., 2005; Miranda et al., 2008; Pfeifer et al., 2013). To our knowledge, hepatobiliary function in PCK rats has not been evaluated previously using the IPL model. In the present study, the disposition of TVP and the major metabolites, DM-4103 and DM-4107, was investigated in IPLs from PCK and wild-type Sprague-Dawley (WT) rats to elucidate disease-mediated alterations in hepatobiliary function.

DMD # 83907

6. Materials and Methods

Chemicals. All chemicals were purchased from Sigma-Aldrich (St. Louis, MO), unless otherwise stated. Livers were perfused with freshly prepared, protein-free, modified Krebs-Henseleit buffer supplemented with 0.373 g/L calcium chloride dihydrate and 2.1 g/L sodium bicarbonate (Fisher Scientific, Fair Lawn, NJ); 7.735 mg/L taurocholic acid sodium salt hydrate was added (15 μ M) to maintain bile flow. The pH of the buffer was adjusted to 7.4 with sodium hydroxide or hydrochloric acid. TVP, DM-4103, DM-4107 and OPC-41100, which was used as the internal standard (IS), were provided by Otsuka Pharmaceutical Co., Ltd (Tokushima, Japan).

Animals. Male, 20-21-week-old, WT and PCK (PCK/CrljCrl-*Pkhd1*^{pck}/Crl) Sprague-Dawley rats (Charles River Laboratories, Wilmington, MA) were used for IPL studies. Cyst development in the PCK rat is substantial at this age, evidenced by an increase of approximately 85% in hepatic cyst volume from 12 to 20 weeks, and by significantly increased liver and kidney weights in 20-week-old PCK rats compared to age-matched WT rats (Brock et al., 2018). Rats were housed in an alternating 12-hr light/dark cycle and allowed water and food ad libitum, and acclimated for a minimum of 1 week prior to liver perfusions. All animal procedures were carried out in accordance with the Guide for the Care and Use of Laboratory Animals as adopted and promulgated by the U.S. National Institutes of Health, and were approved by the Institutional Animal Care and Use Committee (University of North Carolina, Chapel Hill, NC). All surgeries were performed under full anesthesia with ketamine:xylazine (60:12 mg/kg, intraperitoneal injection).

DMD # 83907

Tolvaptan Disposition in Rat Isolated Perfused Livers. Following cannulation of the bile duct and portal vein, the livers were perfused *ex situ* in a single-pass manner with continuously oxygenated, albumin-free Krebs-Henseleit buffer (35 mL/min) as described previously (Brouwer and Thurman, 1996). Albumin was excluded so that more TVP, which is highly protein bound, could be taken up by the hepatocytes, resulting in more quantifiable concentrations of TVP and metabolites in outflow perfusate and bile. After a 15-min equilibration period with blank perfusate, livers were perfused for 30 min with TVP-containing perfusate (~7 μ M; the exact concentration was measured for each experiment), followed by TVP-free perfusion for 30 min. Bile was collected continuously over 5-min intervals for 60 min. Outflow perfusate was collected directly from the perfusate flowing out of the vena cava every 5 min for 60 min. Blank bile was collected during the surgery immediately after bile duct cannulation. After each perfusion, the liver was blotted and weighed. All samples were initially snap frozen, and subsequently stored at -80 °C. Liver viability was assessed by monitoring portal perfusion pressure (<15 cm H₂O), gross morphology, bile flow (>2 μ L/min (Zhang et al., 2016)), and by lactate dehydrogenase (LDH) levels in the outflow perfusate measured by the Pierce™ LDH Cytotoxicity Assay Kit (Thermo Fisher Scientific, Waltham, MA) per the manufacturer's instructions. As a positive control for the LDH assay, one WT rat liver was perfused with 1% Triton X-100, which resulted in immediate liver toxicity based on gross morphology and major LDH release in outflow perfusate. Using dilutions and a standard curve for the outflow perfusate sample with the most LDH release (defined as 100% cytotoxicity), the percentage of cytotoxicity in the other perfused livers was evaluated; LDH release from these livers was negligible (<1% cytotoxicity, data not shown).

DMD # 83907

Bioanalysis. TVP, DM-4103 and DM-4107 were quantified by liquid chromatography–electrospray ionization tandem mass spectroscopy (LC-ESI-MS/MS). After thawing, liver tissue was mixed with saline and homogenized with a Shake Master NEO (BioMedical Science, Tokyo Japan) prior to the pretreatment. Each sample was mixed with the IS and methanol in an ice-water bath. After centrifugation at 20,400 g for 5 min at 10°C or below, the supernatant was analyzed by LC-ESI-MS/MS. The LC-MS/MS system consisted of a Prominence UFLC system (Shimadzu, Kyoto, Japan) and an API4000 triple quadrupole mass spectrometer equipped with an ESI source (AB SCIEX, Framingham, MA) and a switching valve (Valco Instruments, Houston, TX). Analyte separation was achieved on a reversed-phase high performance liquid chromatography column XBridge C18 (3.5 μm , 2.1 mm ID \times 50 mm, Waters, Milford, MA) by the binary gradient method with mobile phases of water-formic acid (1,000:1, v/v) and acetonitrile-formic acid (1,000:1, v/v) at a flow rate of 0.35 mL/min. The mass spectrometer was operated in an ESI positive ion mode using multiple reaction monitoring transitions at m/z 449.2/252 for TVP, 479.1/252 for DM-4103, 481.1/252 for DM-4107 and 463.2/266 for IS. Quantification of each analyte was achieved by comparison of the analyte/IS peak area ratios to those of a calibration curve (Analyst 1.5.1, AB SCIEX). Blank perfusate, blank bile and blank liver homogenate served as matrices for the corresponding samples. TVP and metabolites were quantified in outflow perfusate, bile and terminal liver samples from the IPL studies; these data were used to assess mass balance and conduct pharmacokinetic analyses. The lower limit of quantitation (LLOQ) was 5 nM, 50 nM and 0.6 nmol/g tissue for the outflow perfusate, bile, and liver samples, respectively. Beal's

DMD # 83907

M5 method (Beal, 2001; Jusko, 2012) was used to manage individual values below the LLOQ.

Pharmacokinetic Modeling. Modeling and simulation were used to evaluate the disposition of TVP and the two major metabolites in rat IPLs. A compartmental model assuming first-order processes was developed to describe the rate vs. time profiles using Phoenix[®] WinNonlin[®] version 8.1 (St. Louis, MO), and using a mixed (combined additive and proportional) residual error model. The model scheme depicting the single-pass IPL system (Figure 1) consisted of an extrahepatic and hepatic compartment, which was divided into five subcompartments to mimic liver physiology (Watanabe et al., 2009), and a bile compartment. The model was fit simultaneously to the average biliary excretion and outflow perfusate-time data for TVP and DM-4103+DM-4107, for the WT IPLs and separately for the PCK IPLs. The individual outflow perfusate appearance and biliary excretion rates are presented in Supplemental Table 1. To describe the apparent delay in the biliary detection of tolvaptan and DM-4103+DM-4107 in PCK IPLs (likely due to the cyst burden in the PCK bile ducts), the bile compartment consisted of five transit compartments. The differential equations used to describe the model scheme in Figure 1 are as follows:

WT and PCK extracellular compartment 1 (TVP):

$$\frac{dX_{EC,1}}{dt} = Q \cdot C_{in} + \frac{CL_{BL}}{5} \cdot C_{IC,1} - \left(\frac{CL_{UP}}{5} + Q \right) \cdot C_{EC,1} \quad (1)$$

$$IC(X_{EC,1})=0$$

WT and PCK extracellular compartments 2-5 (TVP):

$$\frac{dX_{EC,n}}{dt} = Q \cdot C_{EC,n-1} + \frac{CL_{BL}}{5} \cdot C_{IC,n} - \left(\frac{CL_{UP}}{5} + Q \right) \cdot C_{EC,n} \quad (2)$$

DMD # 83907

$$\text{IC}(X_{EC,n})=0$$

WT and PCK intracellular compartments 1-5 (TVP):

$$\frac{dX_{IC,n}}{dt} = \frac{CL_{UP}}{5} \cdot C_{EC,n} - \left(\frac{CL_{BL}}{5} + \frac{CL_{Bile}}{5} + \frac{CL_{Met}}{5} + \frac{CL_{03,07}}{5} \right) \cdot C_{IC,n} \quad (3)$$

$$\text{IC}(X_{IC,n})=0$$

WT and PCK concentration data in outflow perfusate expressed as $\frac{dX}{dt}$ (TVP):

$$\frac{dX_{out}}{dt} = Q \cdot C_{EC,5} \quad (4)$$

$$\text{IC}(X_{out})=0$$

WT concentration data in bile expressed as $\frac{dX}{dt}$ (TVP):

$$\frac{dX_{Bile}}{dt} = \frac{CL_{Bile}}{5} \cdot (C_{IC,1} + C_{IC,2} + C_{IC,3} + C_{IC,4} + C_{IC,5}) \quad (5)$$

$$\text{IC}(X_{Bile})=0$$

PCK transit compartment 1 following biliary excretion (TVP):

$$\frac{dX_{Bile,1}}{dt} = \frac{CL_{Bile}}{5} \cdot (C_{IC,1} + C_{IC,2} + C_{IC,3} + C_{IC,4} + C_{IC,5}) - K_{Lag,Bile} \cdot X_{Bile,1} \quad (6)$$

$$\text{IC}(X_{Bile,1})=0$$

PCK transit compartments 2-5 following biliary excretion (TVP):

$$\frac{dX_{Bile,n}}{dt} = K_{Lag,Bile} \cdot X_{Bile,n-1} - K_{Lag,Bile} \cdot X_{Bile,n} \quad (7)$$

$$\text{IC}(X_{Bile,n})=0$$

PCK concentration data in bile expressed as $\frac{dX}{dt}$ (TVP):

$$\frac{dX_{Lag,Bile}}{dt} = K_{Lag,Bile} \cdot X_{Bile,5} \quad (8)$$

DMD # 83907

$$IC(X_{Lag,Bile})=0$$

WT and PCK extracellular compartment 1 (DM-4103+DM-4107):

$$\frac{dX_{03,07,EC,1}}{dt} = \frac{CL_{BL,03,07}}{5} \cdot C_{03,07,IC,1} - Q \cdot C_{03,07,EC,1} \quad (9)$$

$$IC(X_{03,07,EC,1})=0$$

WT and PCK extracellular compartments 2-5 (DM-4103+DM-4107):

$$\frac{dX_{03,07,EC,n}}{dt} = Q \cdot C_{03,07,EC,n-1} + \frac{CL_{BL,03,07}}{5} \cdot C_{03,07,IC,n} - Q \cdot C_{03,07,EC,n} \quad (10)$$

$$IC(X_{03,07,EC,n})=0$$

WT and PCK intracellular compartments 1-5 (DM-4103+DM-4107):

$$\frac{dX_{03,07,IC,n}}{dt} = \frac{CL_{03,07}}{5} \cdot C_{IC,n} - \left(\frac{CL_{BL,03,07}}{5} + \frac{CL_{Bile,03,07}}{5} \right) \cdot C_{03,07,IC,n} \quad (11)$$

$$IC(X_{03,07,IC,n})=0$$

WT and PCK concentration data in outflow perfusate expressed as $\frac{dX}{dt}$ (DM-4103+DM-4107):

$$\frac{dX_{03,07,out}}{dt} = Q \cdot C_{03,07,EC,5} \quad (12)$$

$$IC(X_{03,07,out})=0$$

WT concentration data in bile expressed as $\frac{dX}{dt}$ (DM-4103+DM-4107):

$$\frac{dX_{03,07,Bile}}{dt} = \frac{CL_{Bile,03,07}}{5} \cdot (C_{03,07,IC,1} + C_{03,07,IC,2} + C_{03,07,IC,3} + C_{03,07,IC,4} + C_{03,07,IC,5}) \quad (13)$$

$$IC(X_{03,07,Bile})=0$$

DMD # 83907

PCK transit compartment 1 following biliary excretion (DM-4103+DM-4107):

$$\frac{dX_{03,07,Bile,1}}{dt} = \frac{CL_{Bile,03,07}}{5} \cdot (C_{03,07,IC,1} + C_{03,07,IC,2} + C_{03,07,IC,3} + C_{03,07,IC,4} + C_{03,07,IC,5}) - K_{Lag,Bile,03,07} \cdot X_{03,07,Bile,1} \quad (14)$$

$$IC(X_{03,07,Bile,1})=0$$

PCK transit compartments 2-5 following biliary excretion (DM-4103+DM-4107):

$$\frac{dX_{03,07,Bile,n}}{dt} = K_{Lag,Bile,03,07} \cdot X_{03,07,Bile,n-1} - K_{Lag,Bile,03,07} \cdot X_{03,07,Bile,n} \quad (15)$$

$$IC(X_{03,07,Bile,n})=0$$

PCK concentration data in bile expressed as $\frac{dX}{dt}$ (DM-4103+DM-4107):

$$\frac{dX_{03,07,Lag,Bile}}{dt} = K_{Lag,Bile,03,07} \cdot X_{03,07,Bile,5} \quad (16)$$

$$IC(X_{03,07,Lag,Bile})=0$$

where variables and parameters are defined as in Figure 1, with further explanation as follows. $C_{EC,n}$ represents the extracellular concentration in the corresponding sinusoidal compartment, calculated as $X_{EC,n}/(V_{EC}/5)$. V_{EC} is the extracellular volume of the liver, which was assumed to be in equilibrium with the sinusoidal space and estimated as 20% of the total liver mass (Watanabe et al., 2009; Hobbs et al., 2012). Total liver mass was converted to total liver volume (V_L) using the average density of rat liver (1.084 g/mL) (Pretlow II and Pretlow, 1987). Q represents the perfusate flow rate of 35 mL/min, which was assumed to be constant throughout the sinusoidal space of the liver. C_{in} represents the concentration of TVP in the inflow perfusate, measured for each preparation; binding

DMD # 83907

of TVP to the perfusion tubing and apparatus was negligible (data not shown). $C_{IC,n}$ and $C_{03,07,IC,n}$ represent the total intracellular concentrations of TVP and DM-4103+DM-4107, respectively, in the corresponding hepatocellular compartment. The total liver concentration was calculated as the sum of the mass in intra- and extracellular liver subcompartments 1-5 divided by V_L . The total intracellular liver concentration was calculated as the sum of the mass in hepatocellular subcompartments 1–5, divided by the intracellular volume (V_{IC}), calculated as $V_L - V_{EC}$. Perfusate flow rate multiplied by the concentration in the final extracellular liver compartment ($Q \cdot C_{EC,5}$) was fit to the observed appearance rate in outflow perfusate, while the biliary excretion rate (dX_{Bile}/dt and $dX_{Lag,Bile}/dt$ for WT and PCK rats, respectively) was fit to the observed biliary excretion rate data. The hepatocellular concentrations of TVP and DM-4103+DM-4107 were simulated using the final parameter estimates based on the extensive sampling of outflow perfusate and bile.

Data Analysis. The majority of the datasets passed the Shapiro-Wilk normality test. All raw data are presented as mean \pm S.D. from $n=5$ livers in the PCK group, and $n=6$ in the WT group. Statistical tests [t -tests and Bonferroni-Dunn multiple comparisons tests ($\alpha=0.05$)] were performed using GraphPad Prism 7.02 for Windows, GraphPad Software, La Jolla, CA, to assess differences in: 1) concentrations of TVP, DM-4103 and DM-4107 in outflow perfusate at 30 and 60 min; 2) cumulative amounts of TVP, DM-4103 and DM-4107 in bile at the end of the perfusion; and 3) recovery (in terms of % dose) of TVP, DM-4103 and DM-4107 in the outflow perfusate, bile and liver. Final parameter estimates were considered significantly different if the 95% confidence intervals (CIs), determined in Phoenix[®] WinNonlin[®] version 8.1 (St. Louis, MO), between the WT and PCK groups

DMD # 83907

did not overlap. This method of judging the significance of differences is more conservative than the “standard” method (Schenker and Gentleman, 2001), which assumes consistency, asymptotic normality, and asymptotic independence of the estimates.

DMD # 83907

7. Results

At the end of liver perfusion, larger amounts of TVP (1.29-fold), DM-4103 (1.42-fold) and DM-4107 (1.45-fold) were recovered in PCK compared to WT rat livers, but differences were not statistically significant (Figure 2). PCK rat livers weighed significantly more than those of WT rats ($p=0.0002$; Supplemental Table 2), consistent with previous reports (Katsuyama et al., 2000; Lager et al., 2001; Shimomura et al., 2015).

Outflow Perfusate Concentrations of Tolvaptan and Metabolites. After 30 min of TVP perfusion, when the perfusate was switched from TVP-containing to blank buffer, the TVP concentrations in outflow perfusate did not differ between PCK and WT IPLs (Figure 3A). However, at the end of the washout phase, the outflow perfusate concentration of TVP was 2.33-fold higher in PCK compared to the WT rat livers (PCK= 522.4 ± 127.6 nM vs. WT= 224.6 ± 162.3 nM, $p=0.0089$). DM-4103 concentrations in outflow perfusate trended higher for most time points in PCK compared to WT IPLs, especially towards the end of the perfusion, but these differences were not statistically significant (Figure 3B). A similar trend was seen for DM-4107, but the concentrations at 30 min (3.94-fold increase in PCK), and at the end of the washout (3.69-fold increase in PCK) were significantly different (PCK= 62.57 ± 25.05 nM vs. WT= 15.89 ± 8.67 nM, $p=0.0020$, and PCK= 93.04 ± 30.01 nM vs. WT= 25.23 ± 19.38 nM, $p=0.0014$, respectively; Figure 3C).

Biliary Excretion of Tolvaptan and Metabolites. The overall bile flow in PCK rats was reduced ~1.4-fold (data not shown). The cumulative amount of TVP, DM-4103 and DM-4107 recovered in the bile of PCK compared to WT rat livers tended to be lower

DMD # 83907

throughout the perfusion (Figure 4). The cumulative biliary recovery at 60 min was significantly lower for DM-4103 ($p=0.0038$; Figure 4B).

Total Recovery of Tolvaptan and Metabolites. The total recovery of TVP, expressed as a percentage of the dose, in liver tissue (Figure 5A), outflow perfusate (Figure 5B), and bile (Figure 5C) at the end of the 60-min perfusions was similar between PCK and WT IPLs. DM-4107 recovery was significantly increased in the outflow perfusate of PCK ($1.60\pm 0.57\%$) compared to WT ($0.43\pm 0.29\%$) IPLs ($p=0.0017$). DM-4103 recovery was significantly decreased in the bile of PCK ($<0.01\pm <0.01\%$ compared to WT ($0.02\pm 0.01\%$) IPLs ($p=0.0037$). When assessing the $AUC_{\text{metabolite}}/AUC_{\text{parent}}$ ratios in liver tissue, outflow perfusate and bile, only DM-4107 in outflow perfusate (PCK= $9.40\pm 2.63\%$; WT= $2.67\pm 1.98\%$) reached statistical significance ($p=0.0019$), which coincides with Figure 5B.

Pharmacokinetic Modeling. Differential equations corresponding to the model described in Figure 1 were fit to the data to obtain estimates for the seven clearance parameters, and also for the two rate constants in the case of PCK rats (Table 1). The appearance rate in outflow perfusate, and the excretion rate in bile, are plotted vs. time in Figure 6. Additional model diagnostic plots are shown in Supplemental Figure 1.

The biliary clearance value of TVP (CL_{Bile}) was significantly decreased in PCK compared to WT IPLs (2.19-fold; Table 1). Based on the confidence intervals of the remaining parameter estimates, no additional differences in clearance parameters were significant between PCK and WT IPLs. For those parameters describing clearance from a compartment of identical volume, additional comparisons were made within the same rat group (indicated with # or † symbols in Table 1). In both PCK and WT groups, CL_{BL}

DMD # 83907

$> CL_{Bile}$, suggesting a higher affinity of TVP for hepatic basolateral efflux transporters than for canalicular transporters. Additionally, in both groups, $CL_{Met} > CL_{03,07}$, indicating that the formation clearance of other metabolites is greater in rat IPLs than the formation clearance of DM-4103+DM-4107. In both WT and PCK rat IPLs, $CL_{BL} > CL_{Met} > CL_{03,07} > CL_{Bile}$, suggesting that the formation clearance of metabolites is more substantial than the biliary clearance of TVP, but not as extensive as the basolateral clearance of TVP.

Pharmacokinetic Simulations. The model described in Figure 1 also was used to simulate concentrations of TVP and DM-4103+DM-4107 in the hepatocellular space of PCK and WT IPLs (Figure 7). The model predicted similar hepatocellular concentrations of TVP at the end of the 30-min perfusion with TVP-containing buffer in the PCK and WT IPLs, whereas TVP concentrations were predicted to be higher throughout the washout phase and beyond. Based on the simulations, hepatocellular concentrations of DM-4103+DM-4107 were higher in PCK compared to WT IPLs throughout the 60-min perfusion and beyond.

DMD # 83907

8. Discussion

The current *ex situ* IPL study revealed that the hepatobiliary disposition of TVP and two metabolites was altered in a rodent model of ADPKD. Significantly more DM-4107 (% of TVP dose) was recovered in the outflow perfusate from PCK compared to WT IPLs. In contrast, significantly less DM-4103 (% of TVP dose) was recovered in the bile of PCK compared to WT IPLs. A pharmacokinetic model was developed to describe the disposition of TVP and metabolites in perfusate and bile, and estimate relevant clearance processes.

The estimated biliary clearance value for TVP (CL_{Bile}) was significantly decreased in PCK compared to WT IPLs, suggesting that this biliary excretion process is impaired in PCK rat livers. However, in both groups, basolateral efflux was a more prominent clearance mechanism for TVP ($CL_{BL} > CL_{Bile}$). The formation clearance of DM-4103+DM-4107 and other metabolites from TVP ($CL_{03,07}$ and CL_{Met} , respectively) was not significantly different between PCK and WT IPLs, but in both groups, $CL_{Met} > CL_{03,07}$, indicating that a substantial amount of other metabolites are formed. For example, DM-4103 and DM-4107 undergo subsequent metabolism into other chemical species; in addition, they are formed through separate sequential metabolic pathways (Furukawa et al., 2014; Mazzarino et al., 2017). However, based on our dataset, a more complex pharmacokinetic model could not be justified.

Using the final clearance parameter estimates, simulations revealed that TVP and metabolite concentrations at the end of the perfusion were increased in hepatocytes of PCK rats. These findings are significant because TVP, DM-4107 and especially DM-4103

DMD # 83907

inhibit hepatic efflux transporters (Slizgi et al., 2016). Inhibition of hepatic efflux transporters may be greater in PCK disease compared to healthy controls due to elevated hepatocellular TVP and metabolite concentrations resulting in accumulation of hepatotoxic endogenous molecules [e.g., lithocholate, glycine-conjugated deoxycholate and chenodeoxycholate (Galle et al., 1990; Fickert et al., 2006; Chatterjee et al., 2014)] leading to liver injury. Therefore, increased hepatocellular concentrations of TVP and DM-4103+DM-4107 in PCK disease could be related to the higher incidence of hepatotoxic events in patients with ADPKD treated with TVP in the pivotal clinical trial. Bile acid concentrations are increased in PCK rat livers (Munoz-Garrido et al., 2015; Brock et al., 2018), and elevated hepatocyte concentrations of TVP and metabolites may exacerbate this imbalance. Although the IC₅₀ values obtained from previous studies with human hepatic transporters (Slizgi et al., 2016) cannot be compared directly to the simulated hepatocellular TVP and DM-4103+DM-4107 concentrations in rat IPLs due to species differences, they illustrate the possibility that these chemical species are capable of inhibiting hepatic transporters to a greater degree in patients with ADPKD compared to healthy controls. Hepatocellular accumulation of TVP and metabolites may take time to reach inhibitory concentrations, which could be related to ADPKD disease progression, and this could be one explanation for the delay in TVP toxicity in patients with ADPKD (Watkins et al., 2015).

All rats used in the current study were 20-21-week-old males. Although liver function is thought to be preserved in PLD (Cnossen and Drenth, 2014), hepatic cyst volume in PCK rats increases with age (Brock et al., 2018), potentially resulting in age-dependent changes in hepatobiliary disposition of compounds. A definitive correlation of

DMD # 83907

hepatic cyst involvement and clinically observed TVP-mediated hepatotoxicity cannot be made. However, of those subjects that were adjudicated as highly likely or probably related to study drug, 76% had some level of hepatic cyst burden (Watkins et al., 2015). Furthermore, in TEMPO 3:4 and 4:4, all three Hy's law cases, and 18 of 30 subjects with hepatotoxicity attributable to TVP with a probable (or higher) likelihood, were women (Watkins et al., 2015). However, sex differences in TVP-mediated hepatotoxicity could not be concluded.

PCK rat livers weighed significantly more than WT rat livers, consistent with prior studies (Katsuyama et al., 2000; Lager et al., 2001). These differences may be due to the cysts in PCK rat livers (Brock et al., 2018). Interestingly, bile flow in PCK IPLs was slightly lower than in WT IPLs during perfusion. One possible explanation may be that cystic bile ducts in PCK rat livers are dilated (Masyuk et al., 2004). Similarly, renal tubules in PKD are dilated by cyst formation and proliferation (Igarashi and Somlo, 2007). The resulting structural compression in the tubules hinders urine flow (Grantham et al., 2011). Following this logic, it is conceivable that bile flow in the cystic bile ducts of PCK rats is reduced.

Considerable variability was observed in the TVP and metabolite excretion rates in outflow perfusate and bile between individual perfused livers in each group of rats (Supplemental Table 1). Liver function may be inherently different from rat to rat, especially in the case of PCK rats where hepatic cyst burden can differ markedly at a specific age (Brock et al., 2018). Despite variability between individual IPLs, the average data for WT and PCK rat IPLs revealed distinct differences and trends between the two groups.

DMD # 83907

In conclusion, the hepatobiliary disposition of TVP, DM-4103 and DM-4107 was modified in PCK compared to WT IPLs. The altered disposition resulted in higher simulated concentrations of these chemical species in PCK rat livers, which could impair transport of endogenous compounds such as hepatotoxic bile acids. We hypothesize that this is a contributing mechanism to the increase in liver injury observed in some patients with ADPKD who are administered TVP.

DMD # 83907

9. Acknowledgments

The authors gratefully acknowledge Certara for providing academic research licenses for Phoenix[®] software as part of the Center of Excellence program for educational institutions. The authors thank Dr. Yang Lu for conducting the pilot study, Dr. Brian C. Cooley for his surgical expertise and Dr. Noora Sjöstedt for her support with the visual abstract. This work was presented, in part, at the 21st North American Meeting of the International Society for the Study of Xenobiotics in 2017.

DMD # 83907

10. Authorship Contributions

Participated in research design: Beaudoin, Roth, Brock and Brouwer

Conducted experiments: Beaudoin and Mizuno

Performed data analysis: Beaudoin, Bezençon, Cao, Roth, Brock, Mizuno and Brouwer

Wrote or contributed to the writing of the manuscript: Beaudoin, Bezençon and Brouwer.

DMD # 83907

11. References

- Beal SL (2001) Ways to fit a PK model with some data below the quantification limit. *J Pharmacokinet Pharmacodyn* **28**:481-504.
- Booth CL, Brouwer KR and Brouwer KL (1998) Effect of multidrug resistance modulators on the hepatobiliary disposition of doxorubicin in the isolated perfused rat liver. *Cancer Res* **58**:3641-3648.
- Brock WJ, Beaudoin JJ, Slizgi JR, Su M, Jia W, Roth SE and Brouwer KLR (2018) Bile Acids as Potential Biomarkers to Assess Liver Impairment in Polycystic Kidney Disease. *Int J Toxicol* **37**:144-154.
- Brouwer KL and Thurman RG (1996) Isolated perfused liver. *Pharm Biotechnol* **8**:161-192.
- Chandra P, Johnson BM, Zhang P, Pollack GM and Brouwer KL (2005) Modulation of hepatic canalicular or basolateral transport proteins alters hepatobiliary disposition of a model organic anion in the isolated perfused rat liver. *Drug Metab Dispos* **33**:1238-1243.
- Chatterjee S, Bijmans IT, van Mil SW, Augustijns P and Annaert P (2014) Toxicity and intracellular accumulation of bile acids in sandwich-cultured rat hepatocytes: role of glycine conjugates. *Toxicol In Vitro* **28**:218-230.
- Crossen WR and Drenth JP (2014) Polycystic liver disease: an overview of pathogenesis, clinical manifestations and management. *Orphanet J Rare Dis* **9**:69.
- Fickert P, Fuchsbichler A, Marschall HU, Wagner M, Zollner G, Krause R, Zatloukal K, Jaeschke H, Denk H and Trauner M (2006) Lithocholic acid feeding induces

DMD # 83907

segmental bile duct obstruction and destructive cholangitis in mice. *Am J Pathol* **168**:410-422.

Furukawa M, Miyata K, Kawasome C, Himeda Y, Takeuchi K, Koga T, Hirao Y and Umehara K (2014) Liquid chromatography-tandem mass spectrometry method for determining tolvaptan and its nine metabolites in rat serum: application to a pharmacokinetic study. *Arch Pharm Res* **37**:1578-1587.

Galle PR, Theilmann L, Raedsch R, Otto G and Stiehl A (1990) Ursodeoxycholate reduces hepatotoxicity of bile salts in primary human hepatocytes. *Hepatology* **12**:486-491.

Grantham JJ (2008) Clinical practice. Autosomal dominant polycystic kidney disease. *N Engl J Med* **359**:1477-1485.

Grantham JJ, Mulamalla S and Swenson-Fields KI (2011) Why kidneys fail in autosomal dominant polycystic kidney disease. *Nat Rev Nephrol* **7**:556-566.

Hobbs M, Parker C, Birch H and Kenworthy K (2012) Understanding the interplay of drug transporters involved in the disposition of rosuvastatin in the isolated perfused rat liver using a physiologically-based pharmacokinetic model. *Xenobiotica* **42**:327-338.

Igarashi P and Somlo S (2007) Polycystic kidney disease. *J Am Soc Nephrol* **18**:1371-1373.

Jiang J, Tian L, Huang Y, Yan Y and Li Y (2016) A rapid and sensitive LC-MS/MS-ESI method for the determination of tolvaptan and its two main metabolites in human plasma. *J Chromatogr B Analyt Technol Biomed Life Sci* **1027**:158-164.

DMD # 83907

Jusko WJ (2012) Use of pharmacokinetic data below lower limit of quantitation values.

Pharm Res **29**:2628-2631.

Kaimori JY and Germino GG (2008) ARPKD and ADPKD: first cousins or more distant relatives? *J Am Soc Nephrol* **19**:416-418.

Katsuyama M, Masuyama T, Komura I, Hibino T and Takahashi H (2000) Characterization of a novel polycystic kidney rat model with accompanying polycystic liver. *Exp Anim* **49**:51-55.

Kim I, Fu Y, Hui K, Moeckel G, Mai W, Li C, Liang D, Zhao P, Ma J, Chen XZ, George AL, Jr., Coffey RJ, Feng ZP and Wu G (2008) Fibrocystin/polyductin modulates renal tubular formation by regulating polycystin-2 expression and function. *J Am Soc Nephrol* **19**:455-468.

Lager DJ, Qian Q, Bengal RJ, Ishibashi M and Torres VE (2001) The pck rat: a new model that resembles human autosomal dominant polycystic kidney and liver disease. *Kidney Int* **59**:126-136.

Lu Y, Slizgi JR, Brouwer KR, Claire RL, Freeman KM, Pan M, Brock WJ and Brouwer KL (2016) Hepatocellular Disposition and Transporter Interactions with Tolvaptan and Metabolites in Sandwich-Cultured Human Hepatocytes. *Drug Metab Dispos.*

Masyuk TV, Huang BQ, Masyuk AI, Ritman EL, Torres VE, Wang X, Harris PC and Larusso NF (2004) Biliary dysgenesis in the PCK rat, an orthologous model of autosomal recessive polycystic kidney disease. *Am J Pathol* **165**:1719-1730.

Mazzarino M, Buccilli V, de la Torre X, Fiacco I, Palermo A, Ughi D and Botre F (2017) Characterization of the phase I and phase II metabolic profile of tolvaptan by in

DMD # 83907

vitro studies and liquid chromatography-mass spectrometry profiling: Relevance to doping control analysis. *J Pharm Biomed Anal* **145**:555-568.

Miranda SR, Lee JK, Brouwer KL, Wen Z, Smith PC and Hawke RL (2008) Hepatic metabolism and biliary excretion of silymarin flavonolignans in isolated perfused rat livers: role of multidrug resistance-associated protein 2 (Abcc2). *Drug Metab Dispos* **36**:2219-2226.

Munoz-Garrido P, Marin JJ, Perugorria MJ, Urribarri AD, Erice O, Saez E, Uriz M, Sarvide S, Portu A, Concepcion AR, Romero MR, Monte MJ, Santos-Laso A, Hijona E, Jimenez-Aguero R, Marzioni M, Beuers U, Masyuk TV, LaRusso NF, Prieto J, Bujanda L, Drenth JP and Banales JM (2015) Ursodeoxycholic acid inhibits hepatic cystogenesis in experimental models of polycystic liver disease. *J Hepatol* **63**:952-961.

Pang KS and Rowland M (1977a) Hepatic clearance of drugs. I. Theoretical considerations of a "well-stirred" model and a "parallel tube" model. Influence of hepatic blood flow, plasma and blood cell binding, and the hepatocellular enzymatic activity on hepatic drug clearance. *J Pharmacokinet Biopharm* **5**:625-653.

Pang KS and Rowland M (1977b) Hepatic clearance of drugs. II. Experimental evidence for acceptance of the "well-stirred" model over the "parallel tube" model using lidocaine in the perfused rat liver in situ preparation. *J Pharmacokinet Biopharm* **5**:655-680.

Pang KS and Rowland M (1977c) Hepatic clearance of drugs. III. Additional experimental evidence supporting the "well-stirred" model, using metabolite (MEGX) generated

DMD # 83907

from lidocaine under varying hepatic blood flow rates and linear conditions in the perfused rat liver in situ preparation. *J Pharmacokinet Biopharm* **5**:681-699.

Pfeifer ND, Bridges AS, Ferslew BC, Hardwick RN and Brouwer KL (2013) Hepatic basolateral efflux contributes significantly to rosuvastatin disposition II: characterization of hepatic elimination by basolateral, biliary, and metabolic clearance pathways in rat isolated perfused liver. *J Pharmacol Exp Ther* **347**:737-745.

Pretlow II TG and Pretlow TP (1987) Cell Separation: Methods and Selected Applications, in pp 1-20, Harcourt Brace Jovanovich.

Sabbatini M, Russo L, Cappellaio F, Troncone G, Bellevicine C, De Falco V, Buonocore P, Riccio E, Bisesti V, Federico S and Pisani A (2014) Effects of combined administration of rapamycin, tolvaptan, and AEZ-131 on the progression of polycystic disease in PCK rats. *Am J Physiol Renal Physiol* **306**:F1243-1250.

Schenker N and Gentleman JF (2001) On Judging the Significance of Differences by Examining the Overlap Between Confidence Intervals. *The American Statistician* **55**:182-186.

Shimomura Y, Brock WJ, Ito Y and Morishita K (2015) Age-Related Alterations in Blood Biochemical Characterization of Hepatorenal Function in the PCK Rat: A Model of Polycystic Kidney Disease. *Int J Toxicol* **34**:479-490.

Shoaf SE, Ohzone Y, Ninomiya S, Furukawa M, Bricmont P, Kashiyama E and Mallikaarjun S (2011) In vitro P-glycoprotein interactions and steady-state pharmacokinetic interactions between tolvaptan and digoxin in healthy subjects. *J Clin Pharmacol* **51**:761-769.

DMD # 83907

- Slizgi JR, Lu Y, Brouwer KR, St Claire RL, Freeman KM, Pan M, Brock WJ and Brouwer KL (2016) Inhibition of Human Hepatic Bile Acid Transporters by Tolvaptan and Metabolites: Contributing Factors to Drug-Induced Liver Injury? *Toxicol Sci* **149**:237-250.
- Sorbera L, Castañer J, Bayes M and Silvestre J (2002) Tolvaptan. *Drugs Future* **27**:350-357.
- Torres VE, Chapman AB, Devuyst O, Gansevoort RT, Grantham JJ, Higashihara E, Perrone RD, Krasa HB, Ouyang J, Czerwiec FS and Investigators TT (2012) Tolvaptan in patients with autosomal dominant polycystic kidney disease. *N Engl J Med* **367**:2407-2418.
- Torres VE, Chapman AB, Devuyst O, Gansevoort RT, Perrone RD, Koch G, Ouyang J, McQuade RD, Blais JD, Czerwiec FS, Sergeyeva O and Investigators RT (2017) Tolvaptan in Later-Stage Autosomal Dominant Polycystic Kidney Disease. *N Engl J Med* **377**:1930-1942.
- Torres VE, Harris PC and Pirson Y (2007) Autosomal dominant polycystic kidney disease. *Lancet* **369**:1287-1301.
- Watanabe T, Kusahara H, Maeda K, Shitara Y and Sugiyama Y (2009) Physiologically based pharmacokinetic modeling to predict transporter-mediated clearance and distribution of pravastatin in humans. *J Pharmacol Exp Ther* **328**:652-662.
- Watkins PB, Lewis JH, Kaplowitz N, Alpers DH, Blais JD, Smotzer DM, Krasa H, Ouyang J, Torres VE, Czerwiec FS and Zimmer CA (2015) Clinical Pattern of Tolvaptan-Associated Liver Injury in Subjects with Autosomal Dominant Polycystic Kidney Disease: Analysis of Clinical Trials Database. *Drug Saf* **38**:1103-1113.

DMD # 83907

Xiong H, Turner KC, Ward ES, Jansen PL and Brouwer KL (2000) Altered hepatobiliary disposition of acetaminophen glucuronide in isolated perfused livers from multidrug resistance-associated protein 2-deficient TR(-) rats. *J Pharmacol Exp Ther* **295**:512-518.

Zhang A, Jia Y, Xu Q, Wang C, Liu Q, Meng Q, Peng J, Sun H, Sun P, Huo X and Liu K (2016) Dioscin protects against ANIT-induced cholestasis via regulating Oatps, Mrp2 and Bsep expression in rats. *Toxicol Appl Pharmacol* **305**:127-135.

DMD # 83907

12. Footnotes

This work was supported, in part, by Otsuka Pharmaceutical Development & Commercialization, Inc., and the National Institute of General Medical Sciences of the National Institutes of Health [R01GM041935 and R35GM122576].

Any opinions, findings, conclusions, or recommendations expressed in this publication are those of the authors and do not necessarily reflect the views of the Otsuka Pharmaceutical Group or the National Institutes of Health.

DMD # 83907

13. Figure Legends

Figure 1. Model Scheme Describing the Hepatobiliary Disposition of Tolvaptan and

Metabolites in Rat Isolated Perfused Livers.

The rate of change in the amount of TVP in perfusate flowing into the first sinusoidal compartment with respect to time, dX_{in}/dt , was determined by multiplying the inflow concentration (C_{in}) by the perfusate flow rate (Q). The rate of change in the amount of TVP in the outflow perfusate from the final sinusoidal compartment with respect to time, dX_{out}/dt , was determined by multiplying the outflow concentration (C_{out}) by Q . Based on the well-stirred model (Pang and Rowland, 1977a; Pang and Rowland, 1977b; Pang and Rowland, 1977c), C_{out} was assumed to be equal to the concentration in the final sinusoidal compartment, $C_{EC,5}$. The uptake clearance of TVP from the sinusoidal space to the hepatocellular space was described by CL_{UP} , whereas CL_{BL} described the efflux clearance from the hepatocellular space to the sinusoidal space. CL_{Bile} described the clearance of TVP from the hepatocellular space to bile. The biliary excretion rate, dX_{Bile}/dt , was determined by multiplying the intracellular concentration of TVP (C_{IC}) by the biliary clearance CL_{Bile} , as detailed in the differential equations. In the case of polycystic kidney rats, the biliary excretion rates of TVP and DM-4103+DM-4107 were best described by including transit compartments ($X_{Bile,1-5}$ and $X_{03,07,Bile,1-5}$, respectively) and transit rate constants ($K_{Lag,Bile}$ and $K_{Lag,Bile,03,07}$, respectively) following the excretion of these compounds into bile (denoted by the gray shading). Cytochrome P450-mediated biotransformation of TVP into DM-4103+DM-4107 and other metabolites occurs in the hepatocellular space, and the formation of these metabolites was described by the clearance parameters $CL_{03,07}$ and CL_{Met} , respectively. Once DM-4103 and DM-4107 were formed in the hepatocellular

DMD # 83907

space, the hepatobiliary disposition of these metabolites is described with similar clearance parameters as those for TVP, while an uptake clearance parameter for DM-4103+DM-4107 was not necessary to describe the metabolite profiles. The hepatobiliary disposition of other TVP metabolites could not be assessed directly because only TVP, DM-4103 and DM-4107 concentrations were quantified. X_{EC} and X_{IC} denote the amount of TVP in the extracellular and intracellular space, respectively, and $X_{03,07,EC}$, and $X_{03,07,IC}$ denote the amount of DM-4103+DM-4107 in the extracellular and intracellular space, respectively. Likewise, V_{EC} , V_{IC} , $V_{03,07,EC}$, and $V_{03,07,IC}$ denote the volumes of the extracellular and intracellular space for TVP and metabolites, respectively. V_{EC} and $V_{03,07,EC}$ were assumed to be equal; likewise, V_{IC} and $V_{03,07,IC}$ were assumed to be equal. $C_{IC,n}$ represents the concentration in the n^{th} liver compartment.

Figure 2. Liver Recovery of Tolvaptan, DM-4103 and DM-4107. Amounts (nmol) of tolvaptan, DM-4103 and DM-4107 recovered at 60 min in isolated perfused livers from wild-type (WT) and polycystic kidney (PCK) rats. Data are presented as mean \pm S.D. ($n=6$ for WT; $n=5$ for PCK).

Figure 3. Outflow Perfusate Concentration-Time Profiles. Concentration (nM) vs. time (min) profiles of (A) tolvaptan, (B) DM-4103, and (C) DM-4107 in the outflow perfusate of isolated perfused livers (IPLs) from wild-type (WT) and polycystic kidney (PCK) rats. Statistically significant differences in concentrations between WT and PCK IPLs were assessed at $t=30$ min and at $t=60$ min. Perfusion with tolvaptan (~ 7 μM) and subsequently with blank buffer (washout) for 30 min each are represented by the black and gray bars, respectively. Data are presented as mean \pm S.D. ($n=6$ for WT; $n=5$ for PCK). * $p<0.05$, PCK vs. WT.

DMD # 83907

Figure 4. Cumulative Bile Amount-Time Profiles. Cumulative amount (nmol) vs. time (min) profiles of (A) tolvaptan, (B) DM-4103, and (C) DM-4107 in the bile of isolated perfused livers (IPLs) from wild-type (WT) and polycystic kidney (PCK) rats. Statistically significant differences in cumulative biliary excretion between WT and PCK IPLs were assessed at 60 min. Perfusion with tolvaptan ($\sim 7 \mu\text{M}$) and subsequently with blank buffer (washout) for 30 min each are represented by the black and gray bars, respectively. Data are presented as mean \pm S.D. ($n=6$ for WT; $n=5$ for PCK). * $p<0.05$, PCK vs. WT.

Figure 5. Total Recovery. Total recovery at 60 min of tolvaptan and two tolvaptan metabolites, DM-4103 and DM-4107, expressed as a percentage of dose, in (A) liver, (B) outflow perfusate, and (C) bile in isolated perfused livers from wild-type (WT) and polycystic kidney (PCK) rats. Significant differences between WT and PCK per sample type were assessed for each of the three chemical species. Data are presented as mean \pm S.D. ($n=6$ for WT; $n=5$ for PCK). * $p<0.05$, PCK vs. WT.

Figure 6. Model Fits to Outflow Perfusate Appearance and Biliary Excretion Rate-Time Data. Appearance rate in outflow perfusate (nmol/hr) and biliary excretion rate (nmol/hr) vs. time (min) profiles of (A and C, respectively) tolvaptan and (B and D, respectively) DM-4103+DM-4107 in isolated perfused livers (IPLs) from wild-type (WT) and polycystic kidney (PCK) rats. Perfusion with tolvaptan ($\sim 7 \mu\text{M}$) and subsequently with blank buffer (washout) for 30 min each are represented by the black and gray bars, respectively. Observed data are presented as mean \pm S.D. ($n=6$ for WT; $n=5$ for PCK). PCK_{obs} and WT_{obs} are the observed outflow perfusate appearance and biliary excretion rates in PCK and WT IPLs, whereas PCK_{pred} and WT_{pred} are the excretion rates predicted

DMD # 83907

by the model scheme depicted in Figure 1. See Supplemental Figure 1 for observed vs. predicted outflow perfusate appearance and biliary excretion rate plots.

Figure 7. Simulated Hepatocellular Concentrations. Total hepatocellular concentration (nM) vs. time (hr) profiles of (A) tolvaptan and (B) DM-4103+DM-4107 simulated in the hepatocellular space of isolated perfused livers from wild-type (WT) and polycystic kidney (PCK) rats using the model depicted in Figure 1. Perfusion with tolvaptan (~7 μ M) and subsequently with blank buffer (washout) for 30 min each are represented by the black and gray bars, respectively.

DMD # 83907

14. Tables

Table 1. Estimates of tolvaptan and DM-4103+DM-4107 clearance values in isolated perfused livers (IPLs) from wild-type (WT) and polycystic kidney (PCK) rats based on the model scheme depicted in Figure 1. Livers were perfused with tolvaptan (~7 μM) and subsequently with blank buffer (washout) for 30 min each.

Parameter	Estimate (CV%)	
	[95% CI]	
	WT	PCK
CL _{BL} (L/hr)	0.20 (20%) [0.12, 0.28]#†	0.29 (22%) [0.16, 0.43]#†
CL _{UP} (L/hr)	21 (14%) [15, 26]	29 (14%) [21, 38]
CL _{Bile} (L/hr)	0.11 · 10 ⁻³ (10%) [0.85 · 10 ⁻⁴ , 0.13 · 10 ⁻³]*#†	0.49 · 10 ⁻⁴ (16%) [0.33 · 10 ⁻⁴ , 0.65 · 10 ⁻⁴]*#†
CL _{Met} (L/hr)	0.44 · 10 ⁻¹ (4.2%) [0.40 · 10 ⁻¹ , 0.48 · 10 ⁻¹]	0.38 · 10 ⁻¹ (8.9%) [0.31 · 10 ⁻¹ , 0.45 · 10 ⁻¹]
CL _{03,07} (L/hr)	0.18 · 10 ⁻² (20%) [0.10 · 10 ⁻² , 0.26 · 10 ⁻²]†	0.47 · 10 ⁻² (39%) [0.99 · 10 ⁻³ , 0.85 · 10 ⁻²]†
CL _{BL,03,07} (L/hr)	0.50 · 10 ⁻² (24%) [0.26 · 10 ⁻² , 0.74 · 10 ⁻²]	0.91 · 10 ⁻² (43%) [0.11 · 10 ⁻² , 0.17 · 10 ⁻¹]
CL _{Bile,03,07} (L/hr)	0.16 · 10 ⁻² (23%) [0.84 · 10 ⁻³ , 0.24 · 10 ⁻²]	0.11 · 10 ⁻² (76%) [-0.62 · 10 ⁻³ , 0.28 · 10 ⁻²]

Downloaded from dmd.aspetjournals.org at ASPET Journals on April 19, 2024

DMD # 83907

$K_{Lag,Bile}$ (hr^{-1})		17 (15%) [12, 22]
$K_{Lag,Bile,03,07}$ (hr^{-1})		4.1 (21%) [2.3, 5.8]

CL_{BL} : tolvaptan basolateral clearance; CL_{UP} : tolvaptan uptake clearance; CL_{Bile} : tolvaptan biliary clearance; CL_{Met} : formation clearance of other metabolites from tolvaptan; $CL_{03,07}$: formation clearance of DM-4103+DM-4107 from tolvaptan; $CL_{BL,03,07}$: basolateral clearance of DM-4103+DM-4107; $CL_{Bile,03,07}$: biliary clearance of DM-4103+DM-4107; $K_{Lag,Bile}$: transit rate constant for the biliary excretion of tolvaptan; $K_{Lag,Bile,03,07}$: transit rate constant for the biliary excretion of DM-4103+DM-4107; CI: confidence interval; CV%: coefficient of variation. Statistically significant differences were based on non-overlapping 95% CIs: * $p < 0.05$, PCK vs. WT; # $p < 0.05$, CL_{BL} vs. CL_{Bile} within the same rat IPL group; † $p < 0.05$, compared to CL_{Met} within the same rat IPL group.

15. Figures

Figure 1:

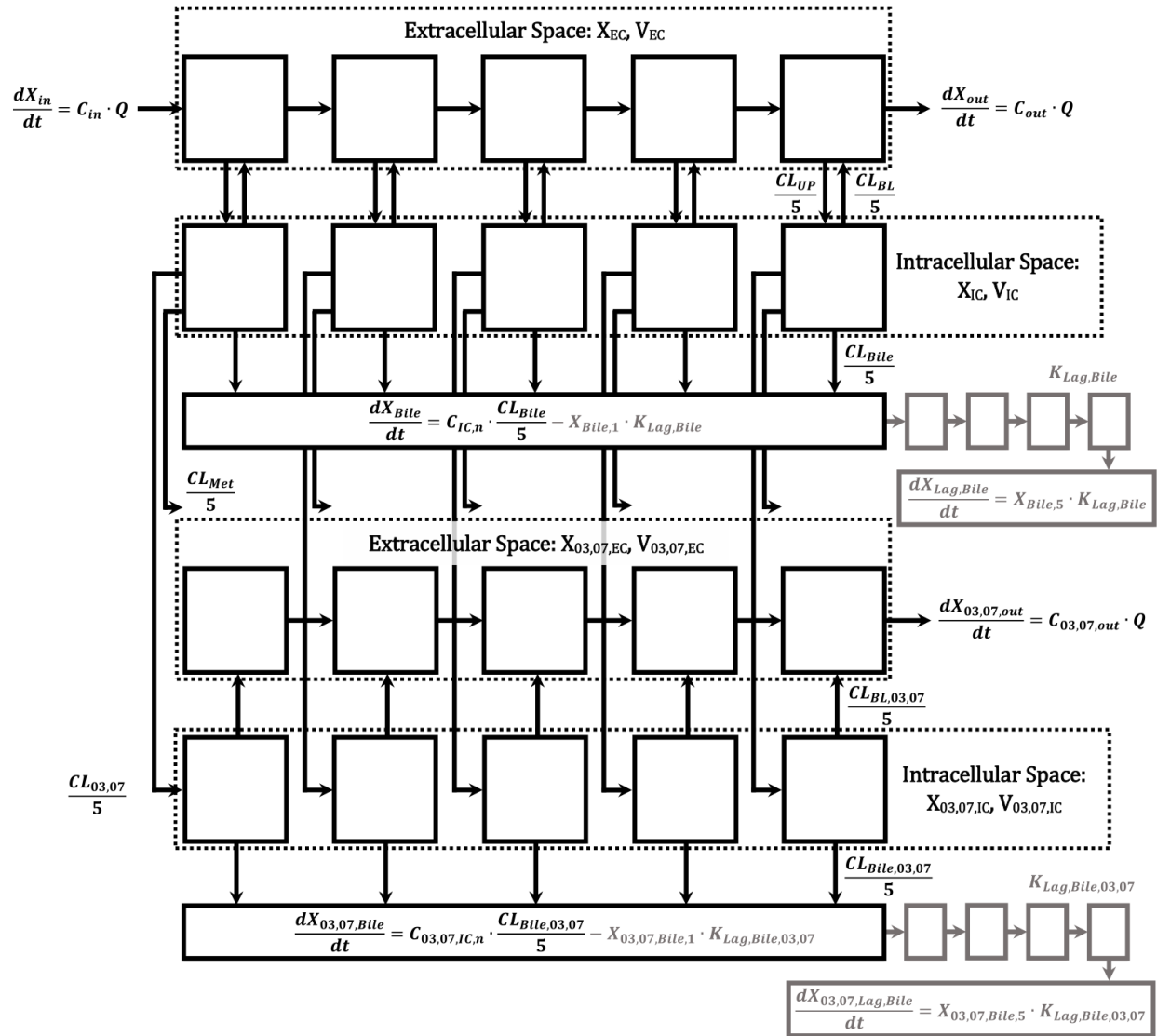


Figure 2:

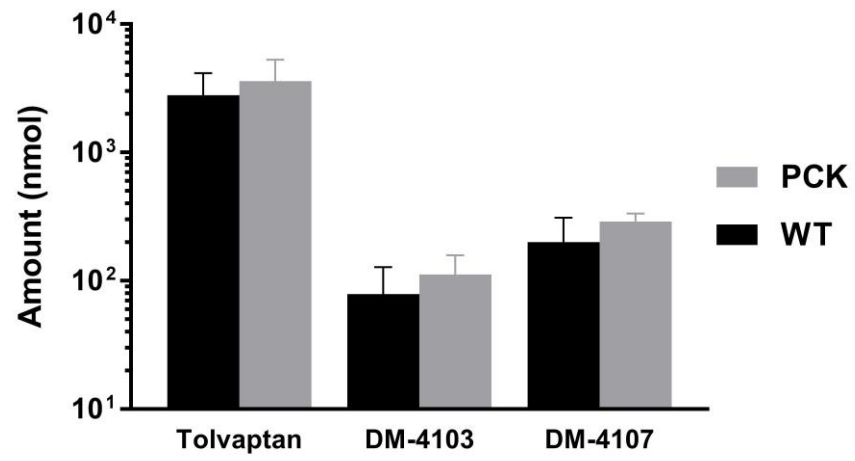


Figure 3:

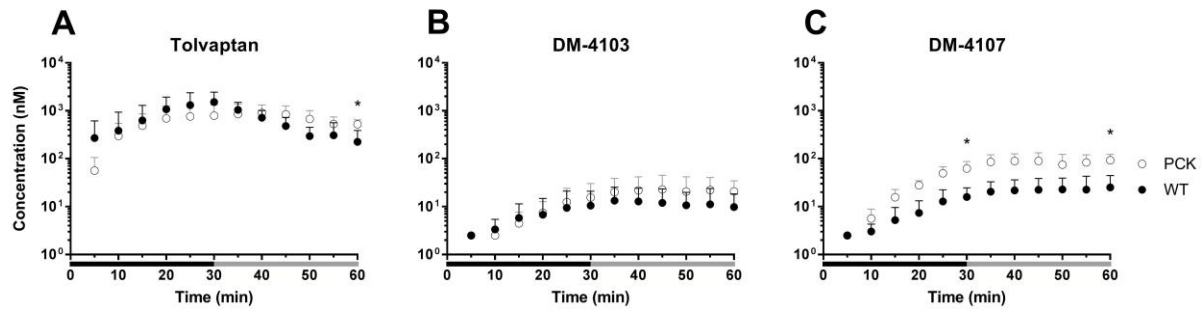


Figure 4:

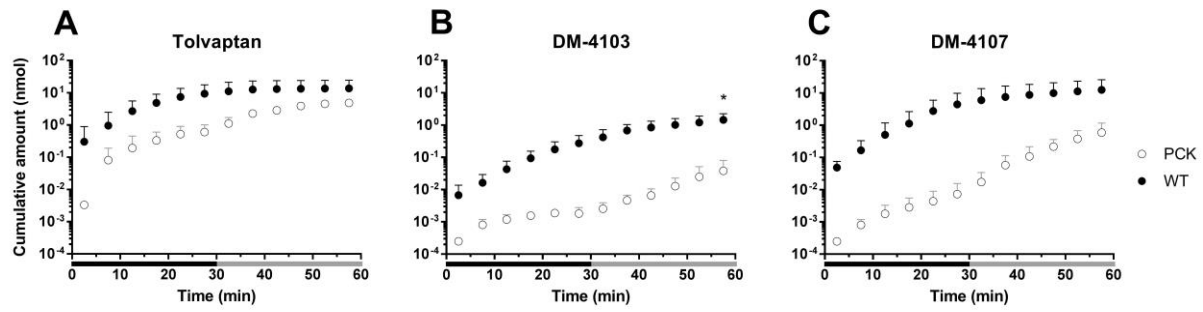


Figure 5:

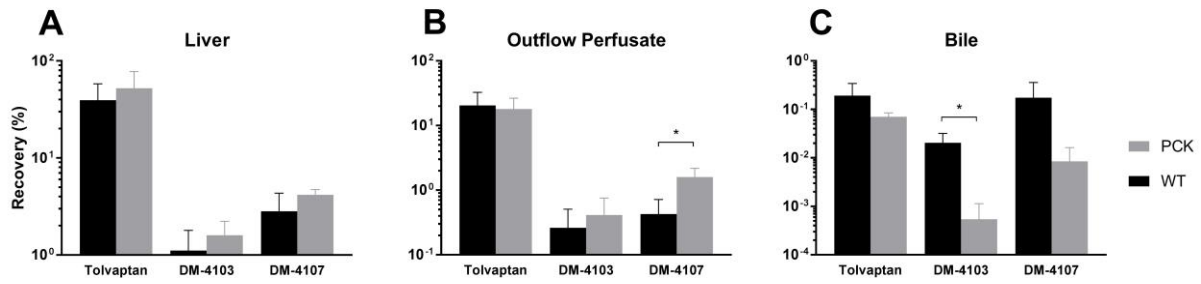


Figure 6:

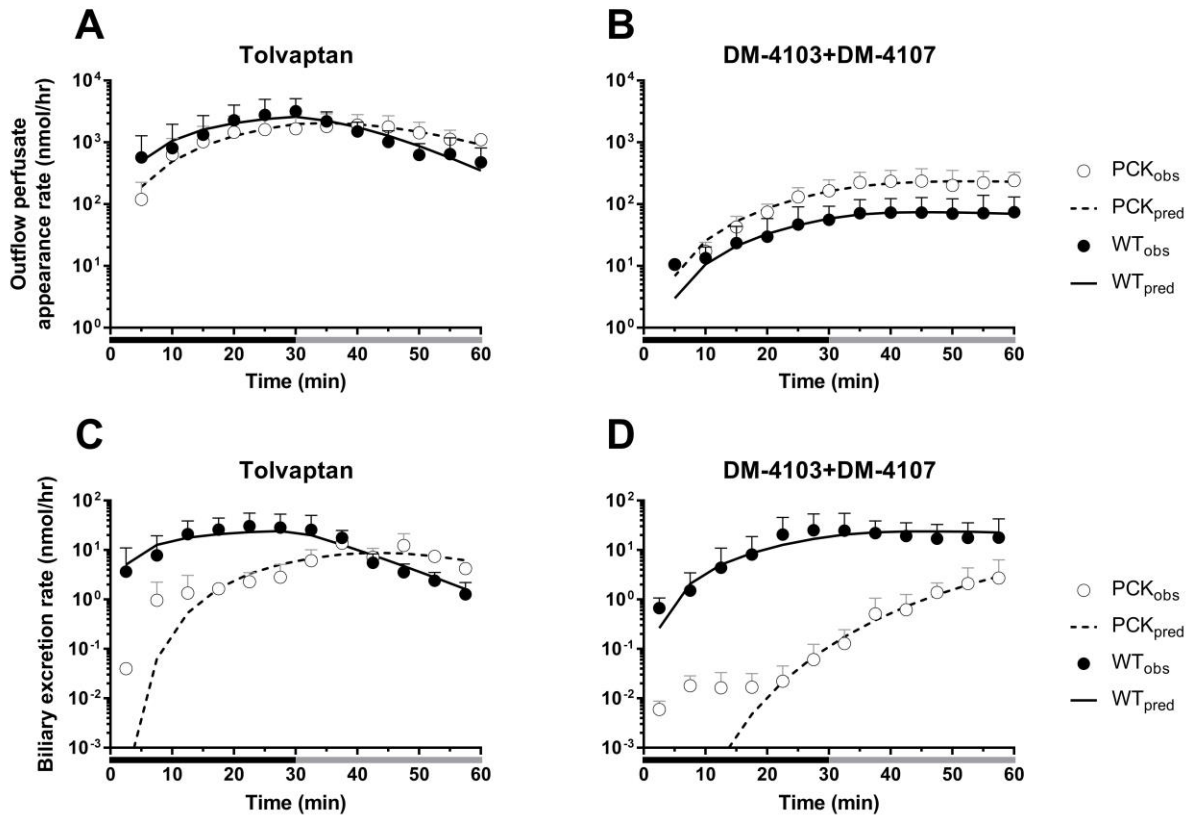
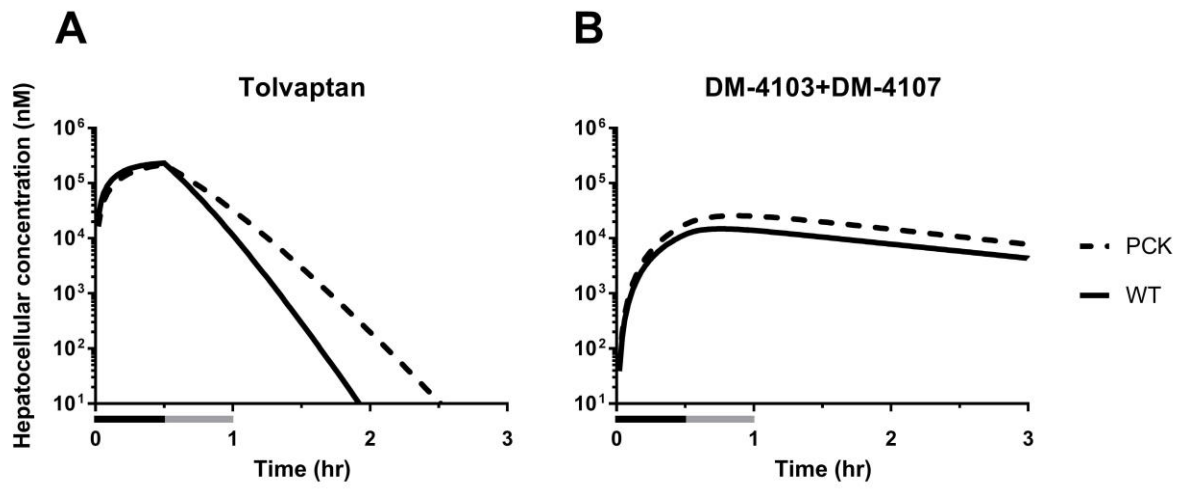


Figure 7:



Journal: Drug Metabolism and Disposition

Title: Altered Hepatobiliary Disposition of Tolvaptan and Selected Tolvaptan Metabolites in a Rodent Model of Polycystic Kidney Disease

Authors: James J. Beaudoin, Jacqueline Bezençon, Yanguang Cao, Katsuhiko Mizuno, Sharin E. Roth, William J. Brock and Kim L.R. Brouwer

Supplemental Table 1. Individual wild-type (WT) and polycystic kidney (PCK) rat outflow perfusate appearance and biliary excretion rates. N.D.=not determined.

Outflow Perfusate Appearance Rate (nmol/hr) in Wild-type (WT) Sprague-Dawley Rats																		
	WT#1			WT#2			WT#3			WT#4			WT#5			WT#6		
Time (hr)	TVP	DM-4103	DM-4107	TVP	DM-4103	DM-4107	TVP	DM-4103	DM-4107	TVP	DM-4103	DM-4107	TVP	DM-4103	DM-4107	TVP	DM-4103	DM-4107
0.0833	5.25	5.25	5.25	488	5.25	5.25	1230	5.25	5.25	13.5	5.25	5.25	5.25	5.25	5.25	1670	5.25	5.25
0.167	5.25	5.25	5.25	239	5.25	5.25	1870	5.25	5.25	30.2	5.25	5.25	14.4	5.25	5.25	2680	15.9	11.8
0.250	81.2	5.25	5.25	2220	5.25	5.25	2260	19.3	19.3	81.7	5.25	5.25	94.8	5.25	5.25	3200	33.2	25.7
0.333	232	5.25	5.25	2820	10.5	12.3	4750	10.8	12.2	158	5.25	11.3	2460	5.25	11.7	3110	48.3	40.1
0.417	498	5.25	13.1	2270	12.8	14.6	5850	22.2	25.2	206	5.25	15.7	3260	5.25	26.4	4460	68.0	66.4
0.500	838	12.0	22.0	2240	12.9	13.7	6270	36.9	38.0	1940	5.25	21.0	3570	5.25	42.2	4230	60.1	63.2
0.583	967	16.1	25.5	2230	13.9	14.9	3050	35.2	44.6	1140	15.7	28.2	3250	10.6	59.8	2460	76.6	85.3
0.667	1210	12.8	16.9	1710	11.4	13.8	1620	35.5	49.1	544	18.8	37.8	2440	11.1	64.7	1470	71.8	92.7
0.750	1120	14.6	20.4	803	5.25	5.25	1100	31.5	47.2	283	16.5	40.9	1880	11.7	69.2	866	71.7	101
0.833	643	13.1	18.9	657	5.25	12.1	576	25.7	39.2	200	20.4	45.0	1200	11.0	64.3	467	59.1	108
0.917	212	5.25	5.25	445	5.25	5.25	427	18.9	33.9	204	20.3	60.3	1580	15.5	61.1	998	76.0	119
1.00	363	10.7	19.5	364	5.25	10.6	269	14.5	30.9	291	22.2	66.4	1160	16.1	71.6	381	55.3	119

Biliary Excretion Rate (nmol/hr) in Wild-type (WT) Sprague-Dawley Rats																		
	WT#1			WT#2			WT#3			WT#4			WT#5			WT#6		
Time (hr)	TVP	DM-4103	DM-4107	TVP	DM-4103	DM-4107	TVP	DM-4103	DM-4107	TVP	DM-4103	DM-4107	TVP	DM-4103	DM-4107	TVP	DM-4103	DM-4107
0.0417	18.2	0.0841	0.947	2.25	0.0144	0.0829	0.262	0.0213	0.444	0.308	0.241	0.921	0.254	0.0427	0.537	0.756	0.0828	0.593
0.125	30.5	0.266	4.88	6.37	0.0182	0.171	1.35	0.0219	0.545	3.82	0.109	0.588	1.46	0.0456	0.601	3.37	0.222	1.65
0.208	50.5	0.627	16.6	26.8	0.107	1.42	7.87	0.0718	1.87	26.3	0.395	1.98	4.64	0.126	1.46	10.2	0.583	1.12
0.292	49.6	0.958	27.8	33.1	0.307	2.76	9.63	0.0539	1.72	40.9	0.765	6.20	7.20	0.609	3.40	15.5	0.950	3.20
0.375	68.0	2.09	52.2	39.8	0.635	5.69	11.5	0.0978	3.79	45.1	1.33	48.5	3.91	0.283	2.28	15.9	1.63	5.60
0.458	59.6	2.39	56.4	37.5	1.02	6.71	2.30	0.0224	0.846	36.9	2.41	52.4	N.D.	N.D.	N.D.	6.13	1.03	3.19
0.542	61.3	3.86	72.9	36.7	1.37	7.84	N.D.	N.D.	N.D.	20.4	1.93	28.1	4.73	1.44	0.00300	5.19	1.97	3.92
0.625	24.5	2.74	41.8	27.5	2.75	13.5	12.0	0.101	2.64	16.7	2.44	36.0	17.6	6.59	8.19	7.73	4.14	11.6
0.708	8.53	1.85	17.5	7.81	1.65	6.79	2.26	0.0648	1.43	2.98	2.25	40.0	N.D.	N.D.	N.D.	6.12	6.11	18.6
0.792	5.88	4.01	22.9	5.15	1.72	6.34	1.86	0.0742	1.36	2.06	1.06	41.7	3.73	2.98	2.49	2.62	2.74	14.5
0.875	3.50	5.20	24.0	3.64	1.85	6.03	1.07	0.0870	0.951	1.53	1.31	44.1	3.06	1.93	1.87	1.65	3.13	16.0
0.958	1.25	2.73	10.8	2.25	2.58	4.38	0.826	0.0902	0.941	0.798	3.66	62.7	2.52	4.05	1.88	0.00600	4.47	8.63

Outflow Perfusate Appearance Rate (nmol/hr) in Polycystic Kidney (PCK) Rats															
	PCK#1			PCK#2			PCK#3			PCK#4			PCK#5		
Time (hr)	TVP	DM-4103	DM-4107	TVP	DM-4103	DM-4107	TVP	DM-4103	DM-4107	TVP	DM-4103	DM-4107	TVP	DM-4103	DM-4107
0.0833	207	5.25	5.25	102	5.25	5.25	12.8	5.25	5.25	27.9	5.25	5.25	244	5.25	5.25
0.167	1140	5.25	20.9	1230	5.25	15.6	300	5.25	5.25	95.0	5.25	5.25	364	5.25	12.4
0.250	2040	20.6	53.1	1660	10.5	39.2	585	5.25	17.0	207	5.25	20.0	612	5.25	35.6
0.333	3420	31.6	77.0	1620	16.7	56.7	965	5.25	44.3	306	5.25	44.7	972	19.5	68.8
0.417	3300	62.5	131	1610	20.7	74.5	1390	5.25	144	302	5.25	53.7	1400	37.3	118
0.500	3490	70.9	176	1220	21.7	79.2	1240	5.25	128	450	5.25	80.7	1900	59.7	193
0.583	3450	89.5	222	932	19.7	84.1	1440	11.0	215	798	10.6	123	2370	81.0	256
0.667	2640	93.4	239	945	18.6	91.1	2020	14.3	211	1030	12.0	126	2850	90.8	274
0.750	2590	105	269	897	19.0	96.6	1890	12.4	159	791	11.7	120	2660	92.1	295
0.833	2080	84.2	239	822	22.9	106	544	5.25	47.3	1690	5.25	105	1940	98.6	291
0.917	1060	80.5	207	709	21.1	106	683	11.2	91.7	1560	23.5	184	1580	95.7	285
1.00	938	52.8	177	726	25.3	122	1310	17.9	157	1370	32.9	254	1140	89.7	268

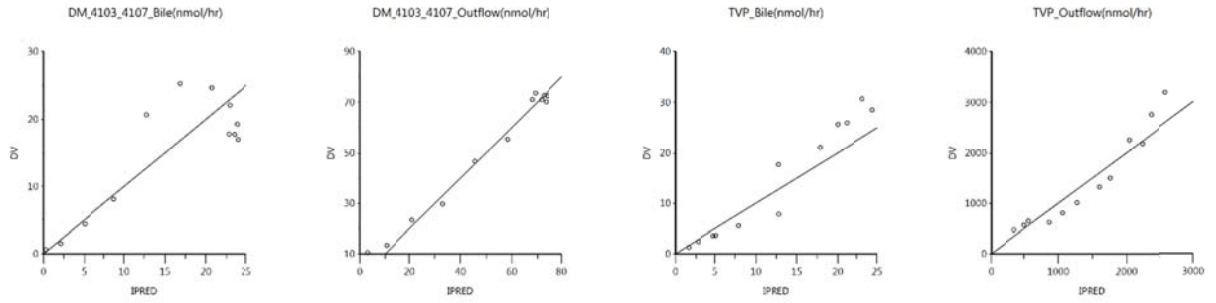
Biliary Excretion Rate (nmol/hr) in Polycystic Kidney (PCK) Rats															
	PCK#1			PCK#2			PCK#3			PCK#4			PCK#5		
Time (hr)	TVP	DM-4103	DM-4107	TVP	DM-4103	DM-4107	TVP	DM-4103	DM-4107	TVP	DM-4103	DM-4107	TVP	DM-4103	DM-4107
0.0417	N.D.	N.D.	N.D.	N.D.	N.D.	N.D.	N.D.	N.D.	N.D.	N.D.	N.D.	N.D.	0.0401	0.00300	0.00300
0.125	0.412	0.0120	0.0120	0.00300	0.00300	0.00300	N.D.	N.D.	N.D.	2.91	0.0120	0.0120	0.548	0.00900	0.00900
0.208	0.333	0.00300	0.00300	0.122	0.00300	0.00300	N.D.	N.D.	N.D.	3.99	0.00600	0.00600	0.976	0.00600	0.0353
0.292	2.16	0.00600	0.00600	1.26	0.00600	0.00600	N.D.	N.D.	N.D.	1.91	0.00300	0.00300	1.27	0.00300	0.0347
0.375	1.81	0.00300	0.00300	1.29	0.00300	0.00300	N.D.	N.D.	N.D.	4.17	0.00600	0.0154	1.93	0.00300	0.0525
0.458	5.91	0.00900	0.116	1.67	0.00300	0.00300	0.627	0.00300	0.00300	N.D.	N.D.	N.D.	3.16	0.00300	0.105
0.542	11.4	0.0217	0.269	9.22	0.00900	0.0445	2.10	0.00600	0.00600	3.69	0.00600	0.0792	4.20	0.00300	0.203
0.625	10.9	0.0357	0.480	4.21	0.00300	0.0418	31.9	0.0390	0.469	5.64	0.00600	0.120	16.3	0.0422	1.34
0.708	10.6	0.0500	0.856	3.81	0.00773	0.181	10.5	0.00900	0.278	2.79	0.00300	0.153	8.41	0.0459	1.54
0.792	5.98	0.0736	1.02	7.13	0.0391	0.777	12.9	0.0120	0.609	28.6	0.0300	2.06	7.47	0.217	2.10
0.875	5.31	0.0816	1.28	8.42	0.100	1.72	9.03	0.00900	0.570	6.06	0.0319	0.797	8.56	0.517	5.39
0.958	4.62	0.154	1.90	4.69	0.123	1.85	3.23	0.00600	0.354	2.78	0.0243	0.472	5.79	0.484	8.27

Supplemental Table 2. Body and liver weights of wild-type (WT) and polycystic kidney (PCK) rats. g=gram; S.D.=standard deviation.

Parameter	WT		PCK	
	Individual	Mean±S.D.	Individual	Mean±S.D.
Body weight (g)	WT#1: 493 WT#2: 526 WT#3: 568 WT#4: 553 WT#5: 594 WT#6: 513	541±37	PCK#1: 543 PCK#2: 553 PCK#3: 562 PCK#4: 548 PCK#5: 541	549±8.4
Liver weight (g)	WT#1: 11.9 WT#2: 15.7 WT#3: 18.2 WT#4: 14.4 WT#5: 16.1 WT#6: 14.7	15.2±2.1	PCK#1: 21.1 PCK#2: 21.6 PCK#3: 23.8 PCK#4: 23.4 PCK#5: 19.9	22.0±1.6

Supplemental Figure 1. Observed (DV) vs. predicted (IPRED) plots of outflow perfusate appearance and biliary excretion rates of DM-4103+DM-4107 and tolvaptan (TVP) in wild-type (A) and polycystic kidney (B) rats.

A)



B)

