

# Characterization of Seasonal Pharmacokinetic Variability in Woodchucks

Jim Zheng, Scott Balsitis, Rex Santos, Bill J. Smith and Raju Subramanian

Gilead Sciences, Inc., 333 Lakeside Dr, Foster City, CA 94404, USA

## **Running Title: Pharmacokinetics and Woodchuck Model for HBV**

**Corresponding Author:** Jim Zheng, PhD, MBA  
Gilead Sciences, Inc.  
333 Lakeside Dr  
Foster City, CA 94404, USA  
Tel: (650) 522-5946  
Fax: (650) 522-1892  
e-mail: Jim.Zheng@gilead.com

**No. of text pages: 17**

**No. of tables: 2**

**No. of figures: 9**

**No. of supplemental tables/figures: 3/1**

**No. of references: 41**

**Abstract word count: 250**

**Significance statement word count: 73**

**Introduction word count: 540**

**Discussion word count: 1110**

**ABBREVIATIONS:** 3TC, lamivudine; AP, antipyrine;  $AUC_{0-24h}$ , area under time-concentration curve from time 0 to 24 h;  $AUC_{inf}$ , area under time-concentration curve from time 0 to infinity; BPM, beats per minute; BT, body temperature; BW, body weight; CBC, complete blood count; CHB, chronic hepatitis B; CL,

clearance;  $C_{\max}$ , maximum concentration;  $E_h$ , hepatic extraction; h, hour; HBV, hepatitis B virus; HCC, hepatocellular carcinoma; HPLC, high-performance liquid chromatography; HR, heart rate; ICG, indocyanine green; IV, intravenous; kg, kilogram; min, minute; mL, milliliter; PK, pharmacokinetics; RTG, raltegravir; SD, standard deviation;  $t_{1/2}$ , terminal half-life; VES, vesatolimod;  $V_{ss}$ , steady-state volume of distribution; WHV, woodchuck hepatitis virus.

## **ABSTRACT**

The eastern woodchuck (*Marmota monax*) is a hibernating species extensively used as an in vivo efficacy model for chronic human hepatitis B virus (HBV) infection. Under laboratory conditions, woodchucks develop a pseudo-hibernation condition and thus, the pharmacokinetics (PK) of small molecule therapeutics may be affected by the seasonal change. The seasonal PK of four probe compounds were characterized over 12 months in laboratory maintained 7 male and 9 female woodchucks. These compounds were selected to study changes in oxidative metabolism (antipyrine; AP), glucuronidation (raltegravir; RTG), renal clearance (lamivudine; 3TC) and hepatic function (indocyanine green; ICG). Seasonal changes in physiological parameters and PK were determined. Seasonal body weight increases were  $\geq 30\%$ . Seasonal changes in body temperature and heart rate were  $< 10\%$ . The mean AP exposure remained unchanged from April to August 2017, followed by a significant increase ( $\geq 1.0$ -fold) from August to December and subsequent decrease to baseline at the end of study. A similar trend was observed in RTG and 3TC exposures. The ICG exposure remained unchanged. No significant sex difference in PK was observed, although female woodchucks appeared to be less susceptible to seasonal PK and body weight changes. Significant seasonal PK changes for AP, RTG and 3TC indicate decreases in oxidative metabolism, phase II glucuronidation and renal clearance during pseudo-hibernation. The lack of seasonal change in ICG exposure suggests there are no significant changes in

hepatic function. This information can be used to optimize the scheduling of woodchuck studies to avoid seasonally-driven variation in drug PK.

## Significance Statement

Woodchuck is a hibernating species and is commonly used as a nonclinical model of hepatitis B infection. Investigation of seasonal PK changes is perhaps of greater interest to pharmaceutical industry scientists using the woodchuck model to optimize the scheduling of woodchuck studies to avoid seasonally-driven variation in drug PK and/or toxicity. This information is also valuable to drug metabolism and veterinary scientists in understanding woodchuck's seasonal metabolism and behavior under the pseudo-hibernation condition.

## Introduction

Despite the availability of an effective vaccine for the prevention of HBV infection, approximately 240 million individuals are chronically infected with HBV, and over half a million people are estimated to die each year due to liver diseases associated with chronic hepatitis B (CHB), primarily due to liver diseases such as cirrhosis and hepatocellular carcinoma (HCC) (WHO). Approved treatment of CHB includes nucleos(t)ide analogs as well as interferon-alpha. These therapies repress viral replication and improve long-term outcome, but cure is rarely achieved. Consequently, there is an urgent need for new therapies that induce durable immune control, i.e. a functional cure, of HBV.

The woodchuck model of chronic hepadnavirus infection is indispensable in developing therapeutic strategies able to finally cure chronic HBV infection (Roggendorf and Tolle, 1995; Menne and Cote, 2007; Dandri and Petersen, 2017). The eastern woodchuck (*Marmota monax*), also known as the groundhog, can be naturally infected with woodchuck hepatitis virus (WHV), a hepadnavirus closely related to human HBV. The woodchuck model of CHB displays many characteristics of human disease and has provided a well-characterized mammalian model for the preclinical evaluation of most antiviral drugs now in use for treatment of chronic HBV infection (Rajagopalan et al., 1996; Genovesi et al., 1998; Mason et al., 1998; Dandri et al., 2000; Korba et al., 2000; Bryant et al., 2001; Menne et al., 2005). Most recently, this model was used to evaluate the antiviral efficacy of various novel immunomodulatory agents, including the TLR7 agonist vesatolimod (VES; GS-9620) and the TLR8 agonist selgantolimod (GS-

9688) (Menne et al., 2015; Paulsen et al., 2015; Daffis et al., 2017; Daffis et al., 2020; Mackman et al., 2020).

The eastern woodchuck is a hibernating species that undergoes large seasonal variations in metabolic state. Reduction in renal clearance and decrease in plasma atrial natriuretic factor were reported in hibernating marmots (*Marmota flaviventris*), a closely related species (Zatzman and South, 1972; Zatzman and Thornhill, 1989), and the hibernating thirteen-lined ground squirrel (*Citellus tridecemlineatus*) (Hong, 1957). In addition, seasonal changes in endocannabinoid concentrations between active and hibernating marmots were observed (Mulawa et al., 2018).

Under laboratory conditions, woodchucks develop a pseudo-hibernation condition during the winter. On the other hand, treatment duration utilizing the woodchuck model for HBV can last multiple weeks, depending on the treatment used, which makes it likely that these studies could overlap with the pseudo-hibernation period. This raises the possibility that small molecule therapeutics administered to woodchucks at different times of year will have differences in PK and metabolism, and therefore potential differences in on- and off-target effects.

There are scarce data describing the potential seasonal changes in metabolism and PK, especially if animals develop a pseudo-hibernation condition during winter. This report presents the characterization of seasonal PK changes of four probe compounds dosed intravenously once every four weeks over 12 months in male and female woodchucks. Using the exposures of the parent compounds as markers, these compounds were selected to study specific



changes in: oxidative metabolism with AP (Balani et al., 2002), phase II glucuronidation with RTG (Kassahun et al., 2007; Liu et al., 2019), renal clearance with 3TC (Johnson et al., 1999) and hepatic function with ICG (Cooke et al., 1963; Huang and Vore, 2001; de Graaf et al., 2011; Hwang et al., 2017).

## Materials and Methods

### Materials

AP, RTG, 3TC and ICG were purchased from Sigma-Aldrich (St. Louis, MO) or VWR International (West Chester, PA), and were of high-performance liquid chromatography (HPLC) or analytic grade. Structure of the probe compounds and their disposition pathways are summarized in Table 1.

### Woodchucks

At the initiation of the study, a total of 16 juvenile woodchucks (*Marmota monax*), 7 males and 9 females, were used. All animals used in these studies were born in the laboratory facility of Northeastern Wildlife, Inc. (Harrison, ID) in the spring of 2016 and inoculated with WHV neonatally (3-5 days of age) by subcutaneous administration of  $10^7$  genome equivalents/mL WHV (strain WH7P2A) but had naturally cleared the infection by quantifying their serum levels of woodchuck hepatitis surface antigen throughout the infection phase. The neonatal WHV inoculation is a standard procedure in preparing WHV chronically infected woodchucks for the study of HBV cure. Woodchucks were about 1 year old at the initiation of the study. Throughout the study duration, animals were housed in floor pens containing cedar or aspen wood shavings, maintained under daily cycles of 12 hours of light and 12 hours of dark and fed with rabbit chow (Purina; 16% crude protein ( $\geq 18\%$  for pups and pregnant animals), 2% crude fat, ~15% crude fiber, vitamin A (4500 IU), 1% calcium and 0.5% phosphate). Animals were not fasted prior to treatment.

## Seasonal single dose PK studies in woodchucks

The animal protocol and all procedures involving woodchucks were reviewed and approved by the Northeastern Wildlife IACUC and adhered to the national guidelines of the Animal Welfare Act, the Guide for the Care and Use of Laboratory Animals, and the American Veterinary Medical Association. A pre-study was conducted on March 16, 2017 to ensure animal safety and to safeguard any potential adverse event due to a four-drug cocktail co-administration. In that study, five separate vials of formulated solution were provided including four vials containing the individual compounds formulated separately and the fifth vial with all four compounds co-formulated into a single formulation. The four compounds, AP, RTG, 3TC and ICG, were either individually formulated or co-formulated as a solution, each at a dose concentration of 0.5 mg/mL and a dose volume of 1 mL/kg in 10% ethanol, 10% polyethylene glycol 300 and 80% water. The formulated solution was administered by a 2-minute intravenous (IV) slow bolus injection via an indwelling catheter in a cephalic vein at a dose of 0.5 mg/kg for each compound. The formulations were provided in 25-mL single-use sterile vials, refrigerated at 2-8°C and protected from light. Animals were divided into 5 groups of n = 3 for each. ICG, RTG, 3TC, AP and the four-compound co-formulation were administered to woodchucks in Groups 1 to 5, respectively.

The main study involving a monthly administration of the four-drug cocktail occurred from April 12, 2017 to April 18, 2018. A snapshot of the PK study is summarized in Table 2. A co-formulated cocktail of all four compounds consisted

of each compound formulated at the same dose, volume, dosing concentration and vehicle as described above. The cocktail was provided in 75-mL single-use sterile vials, refrigerated at 2-8°C and protected from light. One vial was shipped to Northeastern Wildlife, Inc. (Harrison, ID) for each monthly dosing.

The monthly dosing was scheduled to occur once every four weeks. However, each dosing day could be potentially moved by up to 4 days before or after the date to accommodate scheduling conflicts. Body weight, body temperature, and heart rate were measured in each animal prior to dosing each month. Heart rate was determined prior to the induction of anesthesia for blood collections using a ketamine/xylazine combination approach. K<sub>2</sub>EDTA was used for PK and hematology sample collection. No anticoagulant was used for samples collected for clinical chemistry. Roughly 1.0 mL blood was collected for complete blood count (CBC) and hematology. PK samples were collected at 5 min, 10 min, 1 h, 2 h, 4 h, 8 h, 24 h postdose. Blood for PK (0.5 mL) and hematology (1.0 mL) was protected from light and maintained on wet ice, in chilled cryoracks or at approximately 5°C prior to centrifugation to obtain plasma. Centrifugation began within 1 hour of collection. Individual plasma samples were harvested, placed into 96-well tubes and maintained on dry ice prior to storage at approximately -70°C. Samples for clinical chemistry, CBC and hematology were handled according to the contract research organization standard operating procedures. The clinical pathology data were included in the final study report as an appendix for informational purposes. Urine sample was not collected to minimize disruption of the animals.

Tolerability was assessed on-site via in-life parameters including daily visual observation of the woodchucks, as well as body weight and body temperature. Clinical pathology was assessed by analyzing serum chemistry, hematology and coagulation samples at Cornell University, Animal Health Diagnostic Center (Ithaca, NY).

### **Bioanalytical and PK analysis**

Plasma samples were protected from light and stored at  $-20^{\circ}\text{C}$  until shipped to Charles River Laboratories (1 Innovation Drive, Worcester, MA) for bioanalysis. Plasma concentrations of all four administered compounds were quantified by liquid chromatography–tandem mass spectrometry methods. The representative bioanalytical methods and assay performance are detailed in supplemental materials (Table S1-S2). Analyst software (AB Sciex, Framingham, MA) was used for data acquisition and chromatographic integration. Analyst data were exported to Watson<sup>®</sup> LIMS software version 7.4.1 (Thermo Fisher Scientific, Waltham, MA) for regression analysis, concentration calculations and descriptive statistics.

Pharmacokinetic parameters, including area under the plasma concentration–time curve from time 0 to 24 hour ( $\text{AUC}_{0-24\text{h}}$ ), area under the plasma concentration–time curve from time 0 to infinity ( $\text{AUC}_{\text{inf}}$ ), maximal concentration ( $\text{C}_{\text{max}}$ ), terminal half-life ( $t_{1/2}$ ), steady-state volume of distribution ( $V_{\text{ss}}$ ) and clearance (CL), were determined by non-compartmental analysis using Phoenix WinNonlin 6.4 (Pharsight Corporation, Princeton, NJ).

Three woodchucks died during the study for reasons that were judged by the veterinarian to be unrelated to the study drugs. Details of the clinical observations were summarized in supplemental materials.

### **Statistical analysis**

Student's t-test was performed with GraphPad Prism version 7.03 (GraphPad Software, San Diego, CA) using an unpaired, two-tailed, parametric method with 95% confidence level assuming same standard deviation for both populations. The p values less than 0.05 were considered as statistically significant. At least two values were required to calculate mean. At least three values were required to report standard deviation (SD).

## Results

### *Woodchuck baseline characteristics*

The mean body weight was 3.3 (SD 0.4) kg (range 2.6-3.9 kg). The mean (SD) body temperature was 37.7 (0.9) °C (range 37.0-38.7 °C). The mean heart rate under restrained condition was 244 (50) beats per minute (BPM) (range 126-312 BPM). The mean heart rate under anesthesia condition was 130 (21) BPM (range 105-156 BPM). All animals had Gamma-glutamyl transferase < 10 international units per liter at the time of study initiation and were in good overall health.

### *Seasonal changes of physiological parameters*

Seasonal changes in body weight, body temperature and heart rate for both male and female woodchucks from March 16, 2017 to April 18, 2018 are plotted in Fig. 1. A trend of weight gain from April to June, reaching a plateau from June to October and back to baseline on January was observed in male woodchucks. The body-weight trend in female woodchuck was slightly different: a slow increase was observed from April to August, reaching a peak in August followed by a decline to baseline in November (Fig. 1A). The body weight increases from April 12, 2017 to August 14, 2017 were statistically significant for both male ( $p < 0.0001$ ) and female ( $p < 0.0001$ ) woodchucks even though the magnitude of change in males ( $42\% \pm 12\%$ ) was greater than that in females ( $30\% \pm 18\%$ ). No significant changes ( $< 10\%$ ) in body temperature and heart rate were observed

throughout the study duration for either male or female woodchucks maintained under lab conditions (Fig. 1B and 1C).

### *Seasonal changes of PK parameters*

Representative plasma concentration-time profiles following an IV co-injection of AP, RTG, 3TC and ICG in woodchucks on November 23, 2017 are shown in Fig. 2. Seasonal  $AUC_{0-24h}$  changes from April 13, 2017 to March 18, 2018 are plotted in Fig. 3-6. Tabulated summary of the  $AUC_{0-24h}$  values of AP, RTG, 3TC, ICG and plots of statistical analysis from the pre-study and the seasonal PK study are available in supplemental materials (Table S3 and Fig. S1). Additional PK parameters such as  $AUC_{inf}$ ,  $C_{max}$ ,  $t_{1/2}$ ,  $V_{ss}$  and CL from pre-study and representative PK data from May 11 and November 23, 2017 are summarized in Table S3 and plotted in Fig. 9, respectively.

The pre-study results (Table S3) did not show any significant drug-drug interactions when comparing the corresponding  $AUC_{0-24h}$  values of AP, RTG, 3TC and ICG following the IV administration of individual formulation vs. four-drug co-formulation.

The  $AUC_{0-24h}$  of AP remained relatively unchanged from April to August, then gradually increased from August to the end of November ( $3.1 \pm 2.4$  -fold increase in males and  $1.0 \pm 1.8$  -fold increase in females), reaching the maximum by the end of November and subsequently returned to baseline in March of the following year (Fig. 3A). A similar trend was observed in female woodchucks, but the peak exposure was reached at the end of October (Fig. 3B). The exposure increases from May 11 to November 23 in both male (Fig. 7A) and female (Fig. 8A)



woodchucks were statistically significant. The magnitude of exposure change was less pronounced in females ( $2.1 \pm 2.6$  -fold) than in males ( $9.0 \pm 4.3$  -fold). Although, in general, no significant sex difference was observed throughout the study duration, a statistically significant seasonal sex difference ( $p = 0.0011$ ) was observed at the end of November (Fig. 2A and S1A).

The trends of seasonal exposure changes for both RTG and 3TC in male (Fig. 4A and 5A) and female (Fig. 4B and 5B) woodchucks were very similar to those corresponding changes for AP (Fig. 3A and 3B). Statistically significant increases of RTG and 3TC exposures from May 11 to November 23 were observed in both male (Fig. 7B and 7C) and female (Fig. 8B and 8C) woodchucks. No significant sex differences in  $AUC_{0-24h}$  values were observed in the year-round study with the exception that statistically significant seasonal sex differences ( $p = 0.011$  for RTG and  $p = 0.012$  for 3TC) were observed at the end of November (Fig. 2B, 2C, S1B and S1C). No significant ICG  $AUC_{0-24h}$  changes were observed in either male (Fig. 6A and 7D) or female (Fig. 6B and 8D) woodchucks and no sex difference was observed (Fig. 2D and S1D) throughout the study duration.

Representative  $AUC_{inf}$ ,  $C_{max}$ ,  $t_{1/2}$ ,  $V_{ss}$  and CL values between May 11 and November 23, 2017 were compared in Fig. 9. In both male and female woodchucks,  $AUC_{inf}$  increases were statistically significant for AP ( $p < 0.0001$  for male and  $p = 0.026$  for female), RTG ( $P < 0.0001$  for both male and female) and 3TC ( $p < 0.0001$  for male and  $p = 0.041$  for female) but not for ICG ( $p = 0.69$  for male and  $p = 0.77$  for female). No statistically significant  $V_{ss}$  changes ( $p \geq 0.22$ )

were observed for any of the four compounds tested in either male or female woodchucks. In both male and female woodchucks, CL decreases were statistically significant for AP ( $p < 0.0001$  for male and  $p = 0.0047$  for female), RTG ( $p < 0.0001$  for both male and female) and 3TC ( $p < 0.0001$  for male and  $p = 0.016$  for female) but not for ICG ( $p = 0.29$  for male and  $p = 0.48$  for female). In male, increases of  $C_{\max}$  were statistically significant for AP ( $p = 0.0017$ ), RTG ( $p < 0.0001$ ) and 3TC ( $p < 0.0001$ ) but not for ICG ( $p = 0.68$ ). In female,  $C_{\max}$  increases were statistically significant for ICG ( $p = 0.037$ ) but not for AP ( $p = 0.14$ ), RTG ( $p = 0.28$ ) or 3TC ( $p = 0.36$ ). In male, increases of  $t_{1/2}$  were statistically significant for AP ( $p < 0.0001$ ) and 3TC ( $p = 0.0003$ ) but not for RTG ( $P = 0.061$ ) or ICG ( $p = 0.48$ ). In female,  $t_{1/2}$  increases were statistically significant for AP ( $p = 0.039$ ) but not for RTG ( $p = 0.30$ ), 3TC ( $p = 0.14$ ) or ICG ( $p = 0.70$ ). Increased  $t_{1/2}$  led to higher percentage of extrapolated  $AUC_{\text{inf}}$  values which were used to calculate CL values. As such, seasonal  $AUC_{0-24\text{h}}$  values were selected as the most representative PK parameters for discussion.

## Discussion

Under wild conditions, it is well known that hibernating animals need to store energy by gaining weight before the winter and slow their metabolism, lower body temperature, slow breathing and heart rates during the winter to last through the duration of their dormant period (Geiser, 2004). Reduced cardiac output was reported in thirteen-lined ground squirrel during hibernation (Bullard and Funkhouser, 1962). Elevated plasma concentrations of persistent organic pollutant and prolonged accumulation of highly reactive metabolites were observed in grizzly bears during hibernation (Christensen et al., 2007). Sex differences in PK were generally attributed to differences in expression of hepatic enzymes (Czerniak, 2001) and hibernating animals such as woodchuck were not typically used as animal models to explore sex differences in toxicology studies (Curry 3rd, 2001).

The eastern woodchuck is a hibernating species that is being extensively used in laboratory to study the antiviral efficacy for treatment of chronic HBV infection (Rajagopalan et al., 1996; Genovesi et al., 1998; Mason et al., 1998; Dandri et al., 2000; Korba et al., 2000; Bryant et al., 2001; Menne et al., 2005), functional cure of HBV (Menne et al., 2015; Paulsen et al., 2015; Daffis et al., 2017; Daffis et al., 2020) and treatment of WHV associated HCC (Tennant et al., 2004; Iyer et al., 2019).

Under wild conditions, seasonal changes in extrinsic factors such as light, temperature and food availability trigger hibernation (Vybírál and Janský, 1997).

Intrinsically, the existence of the trigger substance, i.e. the so-called “hibernation induction trigger” derived from the blood of hibernating animals including woodchuck, was reported and the effect may be species specific (Vybíral and Janský, 1997). For example, a hibernating specific 88 kilo Dalton protein in the plasma of deeply hibernating woodchucks was described (Horton et al., 1996). Husbandry of woodchucks in a lab facility removed the extrinsic factors such as light, temperature and food availability which can trigger hibernation but unlikely to alter the intrinsic factors such as the trigger substance, which led to a pseudo-hibernation condition.

Under laboratory conditions, the body weight increase from April 12, 2017 to August 14, 2017 was statistically significant for both male and female woodchucks even though the magnitude of change in males was greater than that in females (Fig. 1A). The higher magnitude of change in body weight for males than that for females was likely attributed to the reported 38% higher energy cost for males (Zervanos and Salsbury, 2003). In contrast to wild conditions, no significant changes in body temperature and heart rate were observed throughout the study duration for either male or female woodchucks maintained under lab conditions (Fig. 1B and 1C). The lack of changes in body temperature and heart rate were likely because woodchucks were kept awake and active under lab conditions in contrast to deep hibernation under wild conditions during winter time.

Seasonal plasma  $AUC_{0-24h}$  changes of AP, RTG and 3TC were used as the markers of change in oxidative metabolism, phase II glucuronidation or renal

clearance in woodchucks, respectively. The significantly higher AP, RTG and 3TC exposures on November 23, 2017 vs May 11, 2017 indicated that oxidative metabolism, phase II glucuronidation and renal clearance in woodchuck were significantly reduced during the pseudo-hibernation. The seasonal sex differences observed at the end of November were mainly because the magnitude of maximum exposure change was less pronounced in females than in males and because the peak exposures were not synchronized between male and female woodchucks.

Seasonal  $AUC_{0-24h}$  of ICG was used as a marker of hepatic function in woodchucks. High variability was observed for ICG  $AUC_{0-24h}$ , likely due to a combination of rate of rapid uptake and the precision of time points despite that no protocol violation was reported for sample collection. The lack of change in ICG PK indicated that the hepatic uptake of ICG and blood flow in woodchucks was not significantly altered during the pseudo-hibernation period.

We acknowledge that the lack of direct evidence, i.e. the amount of 3TC recovered in urine, is a limitation when describing the changes in renal clearance. Caution should also be taken when interpreting these results because drugs chosen to be representative of certain drug disposition processes are based on human knowledge and may not be the same in woodchuck. Another limitation was that sex differences in drug metabolizing enzymes or transporters in woodchucks are not known.

The changes in  $AUC_{inf}$  and CL values were consistent with those observed for  $AUC_{0-24h}$ . No statistically significant  $V_{ss}$  changes were observed in either male or female woodchucks. No consistent trends were observed for  $C_{max}$  and  $t_{1/2}$ .

These observed seasonal changes in PK and metabolism could impact how previously published woodchuck PK data are interpreted and understood. Few single dose woodchuck PK studies reported the study dates. For example, single doses of (-)-P-D-2,6-diaminopurine dioxolane were conducted between October 27 and November 10 which is approximately when indigenous woodchucks would begin winter hibernation (Rajagopalan et al., 1996). Single doses of 1-(2-fluoro-5-methyl-b-L-arabinofuranosyl)uracil were conducted between 17 April and 26 June 1996 (Witcher et al., 1997). However, study dates were not reported in many other woodchuck PK studies, particularly for those efficacy studies required multiple weeks of treatment, for example, 12 weeks treatment of adefovir dipivoxil (Cullen et al., 2001), 4 weeks treatment of tenofovir disoproxil fumarate (Menne et al., 2005), 10 weeks treatment of MIV-210, a prodrug of 3-fluoro-2,3-dideoxyguanosine (Michalak et al., 2009) and 4-8 weeks treatment of VES (Menne et al., 2015). In many of these studies, seasonal PK variability was not taken into consideration. Typically, only PK data from pre-study and/or single doses were reported and these may not be representative of the PK from the efficacy studies. This will make it challenging to compare and reproduce the PK results.

This information can also be used to better plan the long-term woodchuck efficacy studies to not overlap with the pseudo-hibernation period. Treatment

duration in woodchuck model for HBV typically lasts multiple weeks. If the treatment starts after August or before February, significant change in exposure would be expected given the observed reduction in oxidative metabolism, phase II glucuronidation and renal clearance in woodchucks during pseudo-hibernation. The high seasonal PK variability could lead to significant changes in pharmacologic response and potential toxicity.

In summary, seasonal changes were observed in PK and body weight, but not body temperature and heart rate, in laboratory woodchucks. Significant  $AUC_{0-24h}$  increases for AP, RTG and 3TC indicated decreases in oxidative metabolism, phase II glucuronidation and renal clearance during pseudo-hibernation. The lack of seasonal change in ICG exposure suggested there was no significant change in hepatic function. This information can be used to optimize the scheduling of woodchuck studies to avoid seasonally-driven variation in drug PK, pharmacodynamics and/or toxicity.

## Acknowledgments

We thank Ryan Nguyen and Dr. Robert Strickley for formulation support; Jennifer Tang for editorial assistance using GraphPad Prism; Northeastern Wildlife (Harrison, ID) for conducting the *in vivo* animal PK studies; Charles River Laboratories (Worcester, MA) for bioanalytical support.



## Authorship Contributions

- *Participated in research design: Zheng, Balsitis, Santos, Smith, Subramanian.*
- *Performed data analysis: Zheng, Santos.*
- *Wrote or contributed to the writing of the manuscript: Zheng, Balsitis, Santos, Smith, Subramanian.*

## References

- Balani SK, Zhu T, Yang TJ, Liu Z, He B, and Lee FW (2002) Effective dosing regimen of 1-aminobenzotriazole for inhibition of antipyrine clearance in rats, dogs, and monkeys. *Drug Metab Dispos* **30**:1059-1062.
- Bryant ML, Bridges EG, Placidi L, Faraj A, Loi AG, Pierra C, Dukhan D, Gosselin G, Imbach JL, Hernandez B, Juodawlkis A, Tennant B, Korba B, Cote P, Marion P, Cretton-Scott E, Schinazi RF, and Sommadossi JP (2001) Antiviral L-nucleosides specific for hepatitis B virus infection. *Antimicrob Agents Chemother* **45**:229-235.
- Bullard RW and Funkhouser GE (1962) Estimated regional blood flow by rubidium 86 distribution during arousal from hibernation. *Am J Physiol* **203**:266-270.
- Christensen JR, MacDuffee M, Yunker MB, and Ross PS (2007) Hibernation-associated Changes in persistent organic pollutant (POP) levels and patterns in British Columbia grizzly bears (*ursus arctos horribilis*). *Environ Sci Technol* **41**:1834-1840.
- Cooke AR, Harrison DD, and Skyring AP (1963) Use of indocyanine green as a test of liver function. *Am J Dig Dis* **8**:244-250.
- Cullen JM, Li DH, Brown C, Eisenberg EJ, Cundy KC, Wolfe J, Toole J, and Gibbs C (2001) Antiviral efficacy and pharmacokinetics of oral adefovir dipivoxil in chronically woodchuck hepatitis virus-infected woodchucks. *Antimicrob Agents Chemother* **45**:2740-2745.
- Curry 3rd BB (2001) Animal models used in identifying gender-related differences. *Int J Toxicol* **20**:153-160.
- Czerniak R (2001) Gender-based differences in pharmacokinetics in laboratory animal models. *Int J Toxicol* **20**:161-163.

Daffis S, Balsitis S, Chamberlain J, Zheng J, Santos R, Rowe W, Ramakrishnan D, Pattabiraman D, Spurlock S, Chu R, Kang D, Mish M, Ramirez R, Li L, Li B, Ma S, Hung M, Voitenleitner C, Yon C, Suresh M, Menne S, Cote P, Delaney 4th WE, Mackman R, and Fletcher SP (2020) Toll-like receptor 8 agonist GS-9688 induces sustained efficacy in the woodchuck model of chronic hepatitis B. *Hepatology*:published online ahead of print, April 4, 2020.

Daffis S, Chamberlain J, Zheng J, Santos R, Rowe W, Mish M, Ramakrishnan D, Yon C, Suresh M, Menne S, Cote P, Delaney 4th WE, Fletcher SP, and Mackman R (2017) Sustained efficacy and surface antigen seroconversion in the woodchuck model of chronic hepatitis B with the selective toll-like receptor 8 agonist GS-9688, in: *Intl Liver Congress*, pp Poster SAT-165, Amsterdam, The Netherlands.

Dandri M, Burda MR, Will H, and Petersen J (2000) Increased hepatocyte turnover and inhibition of woodchuck hepatitis B virus replication by adefovir in vitro do not lead to reduction of the closed circular DNA. *Hepatology* **32**:139-146.

Dandri M and Petersen J (2017) Animal models of HBV infection. *Best Pract Res Clin Gastroenterol* **31**:273-279.

de Graaf W, Häusler S, Heger M, van Ginhoven TM, van Cappellen G, Bennink RJ, Kullak-Ublick GA, Hesselmann R, van Gulik TM, and Stieger B (2011) Transporters involved in the hepatic uptake of (99m)Tc-mebrofenin and indocyanine green. *J Hepatol* **54**:738-745.

Geiser F (2004) Metabolic rate and body temperature reduction during hibernation and daily torpor. *Annu Rev Physiol* **66**:239-274.

Genovesi EV, Lamb L, Medina I, Taylor D, Seifer M, Innaimo S, Colonno RJ, Standing DN, and Clark JM (1998) Efficacy of the carbocyclic 2'-deoxyguanosine nucleoside BMS-200475 in the woodchuck model of hepatitis B virus infection. *Antimicrob Agents Chemother* **42**:3209-3217.

Hong SK (1957) Renal function during hypothermia and hibernation. *Am J Physiol* **188**:137-150.

Horton ND, Oeltgen PR, Kaftani DJ, Su T-P, Bruce DS, Krober AS, and Jones JF (1996) *Biochemical characterization of a hibernation-specific 88 kDa protein derived from the plasma of deeply hibernating woodchucks*. University of New England Press, Armidale, NSW.

Huang L and Vore M (2001) Multidrug resistance p-Glycoprotein 2 is essential for the biliary excretion of indocyanine green. *Drug Metab Dispos* **29**:634-637.

Hwang Y, Yoon H, Choe K, Ahn J, Jung JH, Park J-H, and Kim P (2017) In vivo cellular-level real-time pharmacokinetic imaging of free-form and liposomal indocyanine green in liver. *Biomed Opt Express* **8**:4706-4716.

Iyer RV, Maguire O, Kim M, Curtin LI, Sexton S, Fisher DT, Schihl SA, Fetterly G, Menne S, and Minderman H (2019) Dose-dependent sorafenib-induced immunosuppression is associated with aberrant NFAT activation and expression of PD-1 in T cells. *Cancers* **11**:681.

Johnson MA, Moore KH, Yuen GJ, Bye A, and Pakes GE (1999) Clinical pharmacokinetics of lamivudine. *Clin Pharmacokinet* **36**:41-66.

Kassahun K, McIntosh I, Cui D, Hreniuk D, Merschman S, Lasseter K, Azrolan N, Iwamoto M, Wagner JA, and Wenning LA (2007) Metabolism and disposition in humans

of raltegravir (MK-0518), an anti-AIDS drug targeting the human immunodeficiency virus 1 integrase enzyme. *Drug Metab Dispos* **35**:1657-1663.

Korba BE, Cote P, Hornbuckle W, Tennant BC, and Gerin JL (2000) Treatment of chronic woodchuck hepatitis virus infection in the eastern woodchuck (*marmota monax*) with nucleoside analogues is predictive of therapy for chronic hepatitis B virus infection in humans. *Hepatology* **31**:1165-1175.

Liu SN, Lu JBL, Watson CJW, Lazarus P, Desta Z, and Gufford BT (2019) Mechanistic assessment of extrahepatic contributions to glucuronidation of integrase strand transfer inhibitors. *Drug Metab Dispos* **47**:535-544.

Mackman RL, Mish M, Chin G, Perry JK, Appleby T, Aktoudianakis V, Metobo S, Pyun P, Niu C, Daffis S, Yu H, Zheng J, Villasenor AG, Zablocki J, Chamberlain J, Jin H, Lee G, Suekawa-Pirrone K, Santos R, Delaney 4th WE, and Fletcher SP (2020) Discovery of GS-9688 (selgantolimod) as a potent and selective oral toll-like receptor 8 agonist for the treatment of chronic hepatitis B. *J Med Chem*:published online ahead of print, June 3, 2020.

Mason WS, Cullen J, Moraleda G, Saputelli J, Aldrich CE, Miller DS, Tennant B, Frick L, Averett D, Condreay LD, and Jilbert AR (1998) Lamivudine therapy of WHV-infected woodchucks. *Virology* **245**:18-32.

Menne S and Cote PJ (2007) The woodchuck as an animal model for pathogenesis and therapy of chronic hepatitis B virus infection. *World J Gastroenterol* **13**:104-124.

Menne S, Cote PJ, Korba BE, Butler SD, George AL, Tochkov IA, Delaney 4th WE, Xiong S, Gerin JL, and Tennant BC (2005) Antiviral effect of oral administration of

tenofovir disoproxil fumarate in woodchucks with chronic woodchuck hepatitis virus infection. *Antimicrob Agents Chemother* **49**:2720-2728.

Menne S, Tumas DB, Liu KH, Thampi L, AlDeghaither D, Baldwin BH, Bellezza CA, Cote PJ, Zheng J, Halcomb R, Fosdick A, Fletcher SP, Daffis S, Li L, Yue P, Wolfgang GH, and Tennant BC (2015) Sustained efficacy and seroconversion with the toll-like receptor 7 agonist GS-9620 in the woodchuck model of chronic hepatitis B. *J Hepatol* **62**:1237-1245.

Michalak TI, Zhang H, Churchill ND, Larsson T, Johansson N-G, and Öberg B (2009) Profound antiviral effect of oral administration of MIV-210 on chronic hepadnaviral infection in a woodchuck model of hepatitis B. *Antimicrob Agents Chemother* **53**:3803-3814.

Mulawa EA, Kirkwood JS, Wolfe LM, Wojda SJ, Prenni JE, Florant GL, and Donahue SW (2018) Seasonal changes in endocannabinoid concentrations between active and hibernating marmots (*marmota flaviventris*). *J Biol Rhythms* **33**:388-401.

Paulsen D, Weber O, Ruebsamen-Schaeff H, Tennant BC, and Menne S (2015) AIC649 induces a bi-phasic treatment response in the woodchuck model of chronic hepatitis B. *PLoS One* **10**:e0144383.

Rajagopalan P, Boudinot FD, Chu CK, Tennant BC, Baldwin BH, and Schinazi RF (1996) Pharmacokinetics of (-)-2'-3'-dideoxy-3'-thiacytidine in woodchucks. *Antimicrob Agents Chemother* **40**:642-645.

Roggendorf M and Tolle TK (1995) The woodchuck: an animal model for hepatitis B virus infection in man. *Intervirology* **38**:100-112.

Tennant BC, Toshkov IA, Peek SF, Jacob JR, Menne S, Hornbuckle WE, Schinazi RD, Korba BE, Cote PJ, and Gerin JL (2004) Hepatocellular carcinoma in the woodchuck model of hepatitis B virus infection. *Gastroenterology* **127**:S283-S293.

Vybíral S and Janský L (1997) Hibernation triggers and cryogens: do they play a role in hibernation? *Comp Biochem Physiol A Physiol* **118**:1125-1133.

WHO Hepatitis B fact sheets, <https://www.who.int/news-room/fact-sheets/detail/hepatitis-b>.

Witcher JW, Boudinot FD, Baldwin BH, Ascenzi MA, Tennant BC, Du JF, and Chu CK (1997) Pharmacokinetics of 1-(2-fluoro-5-methyl-beta-L-arabinofuranosyl)uracil in woodchucks. *Antimicrob Agents Chemother* **41**:2184-2187.

Zatzman ML and South FE (1972) Renal function of the awake and hibernating marmot *marmota flaviventris*. *Am J Physiol* **222**:1035-1039.

Zatzman ML and Thornhill GV (1989) Plasma levels of atrial natriuretic factor in nonhibernating and hibernating marmots. *Cryobiology* **26**:196-198.

Zervanos SM and Salsbury CM (2003) Seasonal body temperature fluctuations and energetic strategies in free-ranging eastern woodchucks (*Marmota monax*). *J Mammal* **84**:299-310.

### Footnotes

This research was funded by Gilead Sciences, Inc. All authors are current employees of Gilead Sciences and declaring no competing interest.

<sup>s</sup>This article has supplemental material available at [dmd.aspetjournals.org](http://dmd.aspetjournals.org).



## Figure Legends

**Fig. 1.** Seasonal changes of physiological parameters from April 12, 2017 to April 18, 2018: A) Body weight; B) Body temperature; C) Heart rate. Dates were plotted from April 12, 2017 to April 18, 2018. The body weight increases from April 12, 2017 to August 14, 2017 were statistically significant for both male ( $p < 0.0001$ ) and female ( $p < 0.0001$ ) woodchucks even though the magnitude of change in males was greater than that in females. No significant changes in body temperature and heart rate were observed throughout the study duration for either male or female woodchucks. Statistical analysis was performed using an unpaired, two-tailed, parametric t-test method (mean  $\pm$  SD,  $n = 6$  or  $7$  for male,  $n = 7$  or  $9$  for female. Three woodchucks died during the study).

**Fig. 2.** Representative plasma concentration-time profiles following an IV bolus injection to woodchucks on November 23, 2017: A) AP; B) RTG; C) 3TC; D) ICG. Statistically significant seasonal sex differences were observed for AP ( $p = 0.0011$ ), RTG ( $p = 0.011$ ) and 3TC ( $p = 0.012$ ) but not for ICG ( $p = 0.88$ ) at the end of November. Statistical analysis was performed using an unpaired, two-tailed, parametric t-test method (mean  $\pm$  SD,  $n = 6$  for male,  $n = 7$  for female).

**Fig. 3.** Individual and mean seasonal  $AUC_{0-24h}$  changes of AP: A) Male; B) Female. Dates were plotted from April 13, 2017 to March 18, 2018. The  $AUC_{0-24h}$  of AP remained relatively unchanged from April to August, then gradually increased from August to the end of November, reaching the maximum by the end of November and subsequently returned to baseline in March of the following year. A similar trend was observed in female woodchucks, but the peak exposure

was reached at the end of October. The exposure increases from May to November in both male and female woodchucks were statistically significant. The magnitude of exposure change was less pronounced in females than in males. Statistical analysis was performed using an unpaired, two-tailed, parametric t-test method. Three woodchucks died during the study.

**Fig. 4.** Individual and mean seasonal  $AUC_{0-24h}$  changes of RTG: A) Male; B) Female. Dates were plotted from April 13, 2017 to March 18, 2018. The  $AUC_{0-24h}$  of RTG remained relatively unchanged from April to August, then gradually increased from August to the end of November, reaching the maximum by the end of November and subsequently returned to baseline in March of the following year. A similar trend was observed in female woodchucks, but the peak exposure was reached at the end of October. The exposure increases from May to November in both male and female woodchucks were statistically significant. The magnitude of exposure change was less pronounced in females than in males. Statistical analysis was performed using an unpaired, two-tailed, parametric t-test method. Three woodchucks died during the study.

**Fig. 5.** Individual and mean seasonal  $AUC_{0-24h}$  changes of 3TC: A) Male; B) Female. Dates were plotted from April 13, 2017 to March 18, 2018. The  $AUC_{0-24h}$  of 3TC remained relatively unchanged from April to August, then gradually increased from August to the end of November, reaching the maximum by the end of November and subsequently returned to baseline in March of the following year. A similar trend was observed in female woodchucks, but the peak exposure was reached at the end of October. The exposure increases from May to

November in both male and female woodchucks were statistically significant. The magnitude of exposure change was less pronounced in females than in males. Statistical analysis was performed using an unpaired, two-tailed, parametric t-test method. Three woodchucks died during the study.

**Fig. 6.** Individual and mean seasonal  $AUC_{0-24h}$  changes of ICG: A) Male; B) Female. Dates were plotted from April 13, 2017 to March 18, 2018. No significant ICG  $AUC_{0-24h}$  changes were observed in either male or female woodchucks. Statistical analysis was performed using an unpaired, two-tailed, parametric t-test method. Three woodchucks died during the study.

**Fig. 7.** Representative seasonal  $AUC_{0-24h}$  comparison between May 11 and November 23, 2017 in males: A) AP; B) RTG; C) 3TC; D) ICG. The exposure increases were statistically significant for AP, RTG and 3TC but not for ICG. Statistical analysis was performed using an unpaired, two-tailed, parametric t-test method (mean  $\pm$  SD, n = 6 or 7 for male, n = 7 or 9 for female. Three woodchucks died during the study).

**Fig. 8.** Representative seasonal  $AUC_{0-24h}$  comparison between May 11 and November 23, 2017 in females: A) AP; B) RTG; C) 3TC; D) ICG. The exposure increases were statistically significant for AP, RTG and 3TC but not for ICG. Statistical analysis was performed using an unpaired, two-tailed, parametric t-test method (mean  $\pm$  SD, n = 6 or 7 for male, n = 7 or 9 for female. Three woodchucks died during the study).

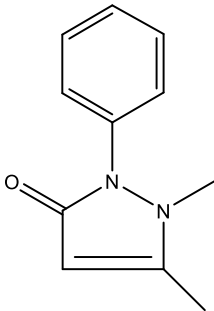
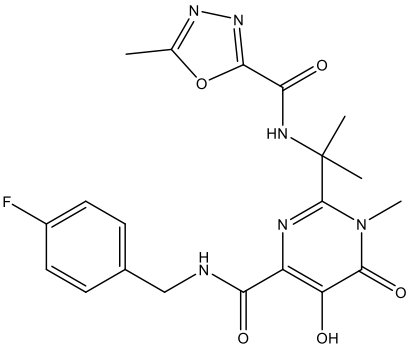
**Fig. 9.** Comparison of representative other seasonal PK parameters ( $AUC_{inf}$ ,  $C_{max}$ ,  $t_{1/2}$ ,  $V_{ss}$  and CL) between May 11 and November 23, 2017 in: A) male; B)

female. Data in green were from May 11, 2017 and data in red were from Nov 23, 2017.  $AUC_{inf}$  and CL values were plotted in log scale while other PK parameters were plotted in linear scale. Symbols:  $\Delta$ , AP; X, RTG;  $\circ$ , 3TC;  $\square$ , ICG. In both male and female woodchucks,  $AUC_{inf}$  increases were statistically significant for AP ( $p < 0.0001$  for male and  $p = 0.026$  for female), RTG ( $P < 0.0001$  for both male and female) and 3TC ( $p < 0.0001$  for male and  $p = 0.041$  for female) but not for ICG ( $p = 0.69$  for male and  $p = 0.77$  for female). No statistically significant  $V_{ss}$  changes ( $p \geq 0.22$ ) were observed for any of the four compounds tested in either male or female woodchucks. In both male and female woodchucks, CL decreases were statistically significant for AP ( $p < 0.0001$  for male and  $p = 0.0047$  for female), RTG ( $p < 0.0001$  for both male and female) and 3TC ( $p < 0.0001$  for male and  $p = 0.016$  for female) but not for ICG ( $p = 0.29$  for male and  $p = 0.48$  for female). In male, increases of  $C_{max}$  were statistically significant for AP ( $p = 0.0017$ ), RTG ( $p < 0.0001$ ) and 3TC ( $p < 0.0001$ ) but not for ICG ( $p = 0.68$ ). In female,  $C_{max}$  increases were statistically significant for ICG ( $p = 0.037$ ) but not for AP ( $p = 0.14$ ), RTG ( $p = 0.28$ ) or 3TC ( $p = 0.36$ ). In male, increases of  $t_{1/2}$  were statistically significant for AP ( $p < 0.0001$ ) and 3TC ( $p = 0.0003$ ) but not for RTG ( $P = 0.061$ ) or ICG ( $p = 0.48$ ). In female,  $t_{1/2}$  increases were statistically significant for AP ( $p = 0.039$ ) but not for RTG ( $p = 0.30$ ), 3TC ( $p = 0.14$ ) or ICG ( $p = 0.70$ ). Statistical analysis was performed using an unpaired, two-tailed, parametric t-test method (mean  $\pm$  SD,  $n = 6$  or  $7$  for male,  $n = 7$  or  $9$  for female. Three woodchucks died during the study).

## Tables

TABLE 1

Summary of structure and disposition pathways of the four probe compounds

Compounds	Structure	Indication	Routes of Clearance in Human
Antipyrine (AP)		Not applicable	CYP-mediated oxidative metabolism by 1A2, 2B6, 2C8, 2C9, 2C18 and 3A4 (Balani et al., 2002)
Raltegravir (RTG)		Anti-HIV	Phase II glucuronidation by UGT1A1 (Kassahun et al., 2007; Liu et al., 2019)

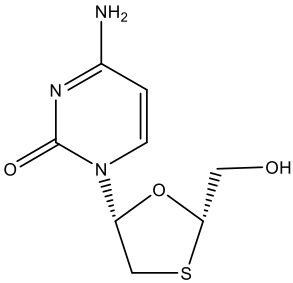
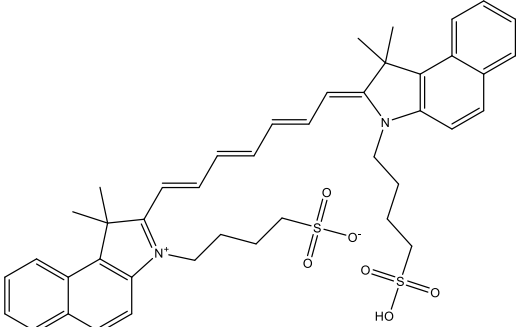
<p>Lamivudine (3TC)</p>		<p>Anti-HIV</p>	<p>Active transport and renal clearance by MDR1, MRP1, MRP2, MRP3, MRP4 and BCRP (Johnson et al., 1999)</p>
<p>Indocyanine Green (ICG)</p>		<p>Medical diagnostics</p>	<p>Transported by OATP1B3 and NTCP (de Graaf et al., 2011). Clearance route for ICG is unclear (Huang and Vore, 2001; Hwang et al., 2017).</p>

TABLE 2

A snapshot of the seasonal woodchuck PK study design

Dose Frequency	Once every four weeks from March 16, 2017 to March 16, 2018
Dose Route	Intravenous bolus administration via 2-minute slow push
Dose Volume, Concentration, Amount	1 mL/kg, 0.5 mg/mL, cassette dose at 0.5 mg/kg for each compound
Formulation Vehicle	10% ethanol, 10% polyethylene glycol 300 and 80% water
Fasted/Fed	Non-fasted
Anesthetic agents	ketamine/xylazine combination
Number of Animals	7 Males, 9 Females
Sample Matrix	Plasma
Time Points	5 min, 10 min, 1 h, 2 h, 4 h, 8 h, 24 h
Physiological Parameters	Body weight, body temperature and heart rate

---

Lab Conditions

Steady room temperature, mimicking external seasonal light cycle

---

Downloaded from [dnd.aspetjournals.org](https://dnd.aspetjournals.org) at ASPET Journals on April 18, 2024



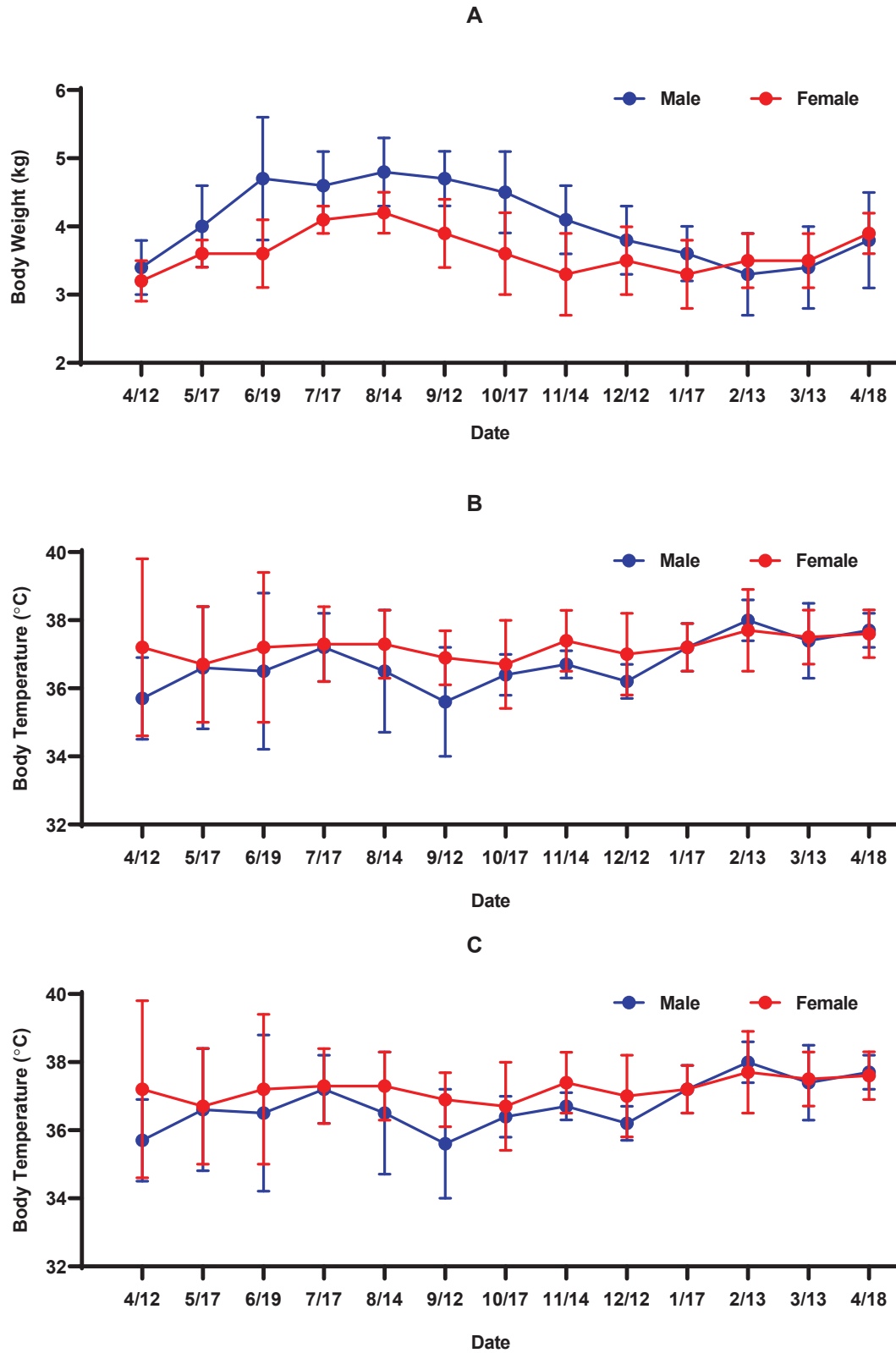


Fig. 1

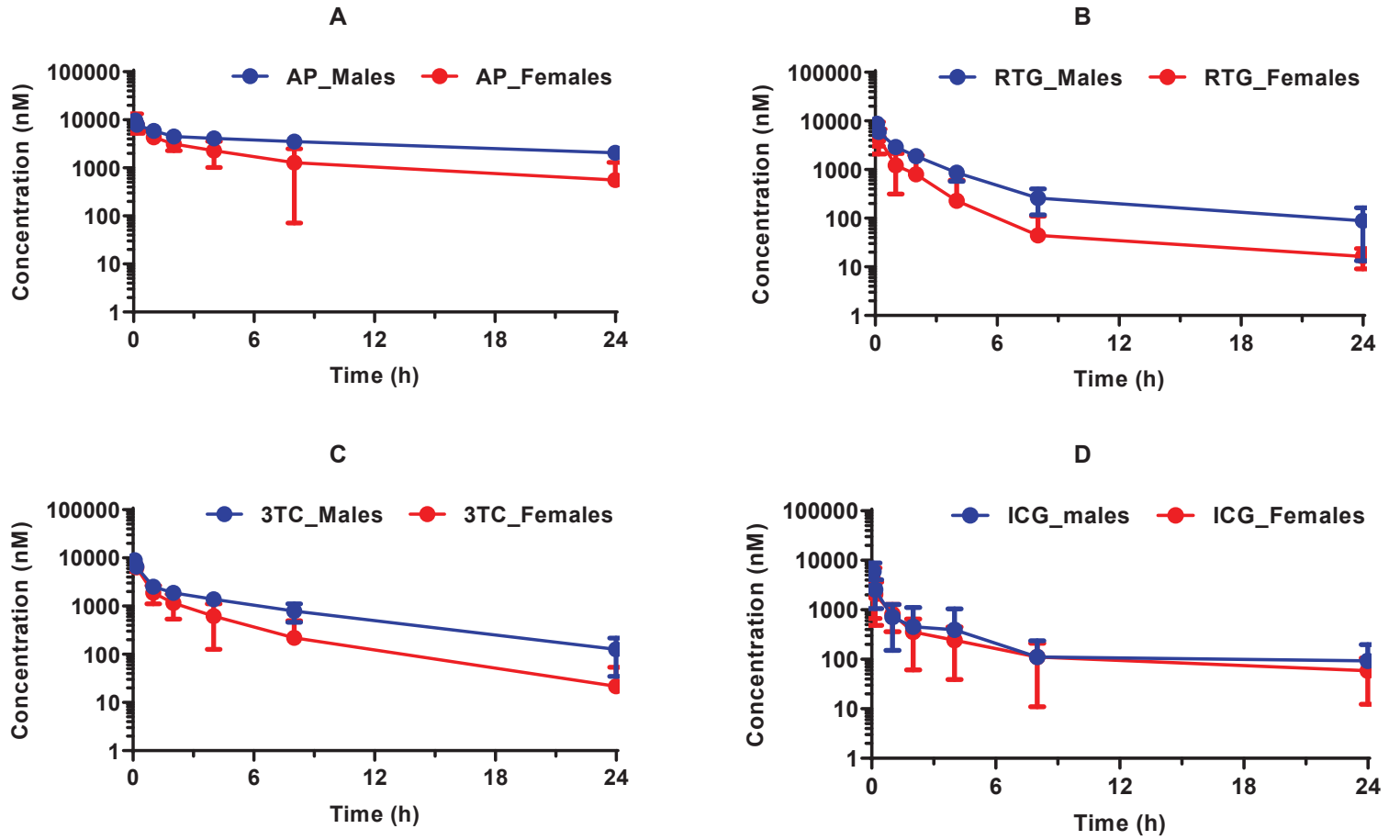


Fig. 2

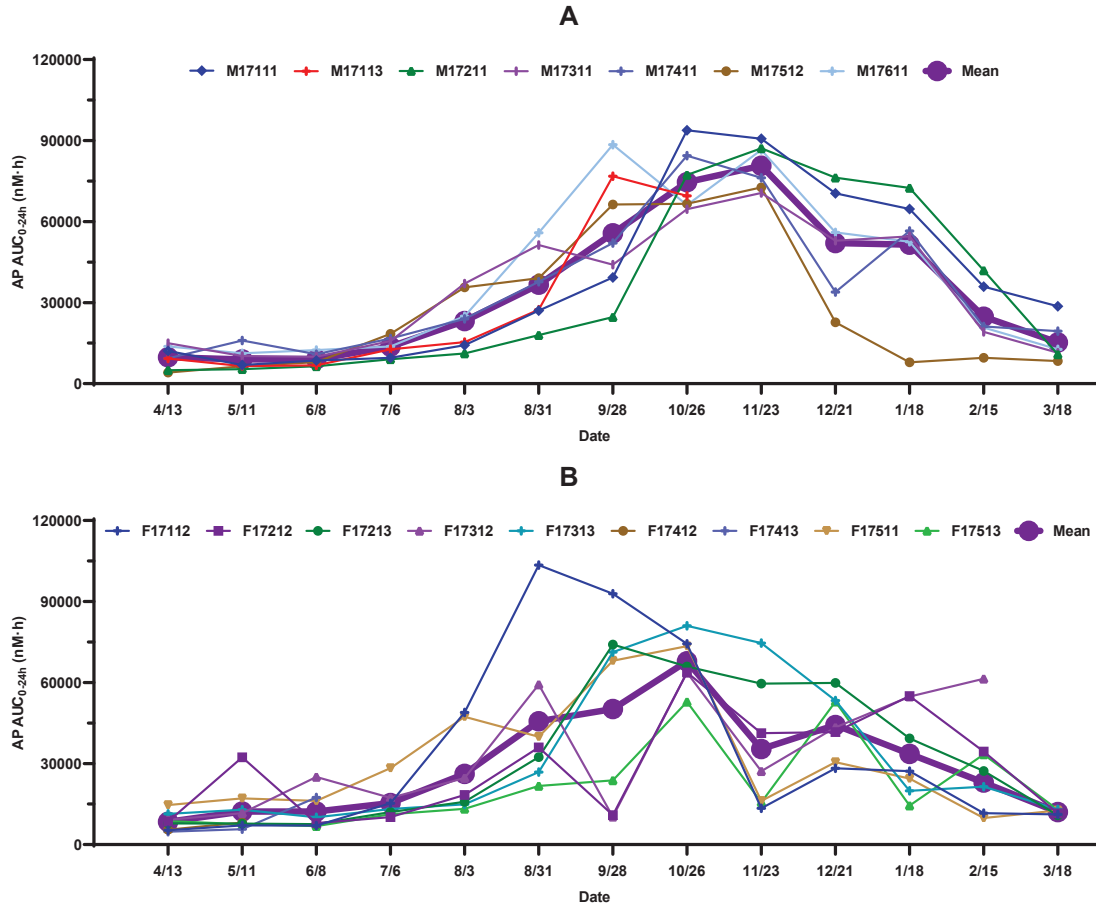


Fig. 3

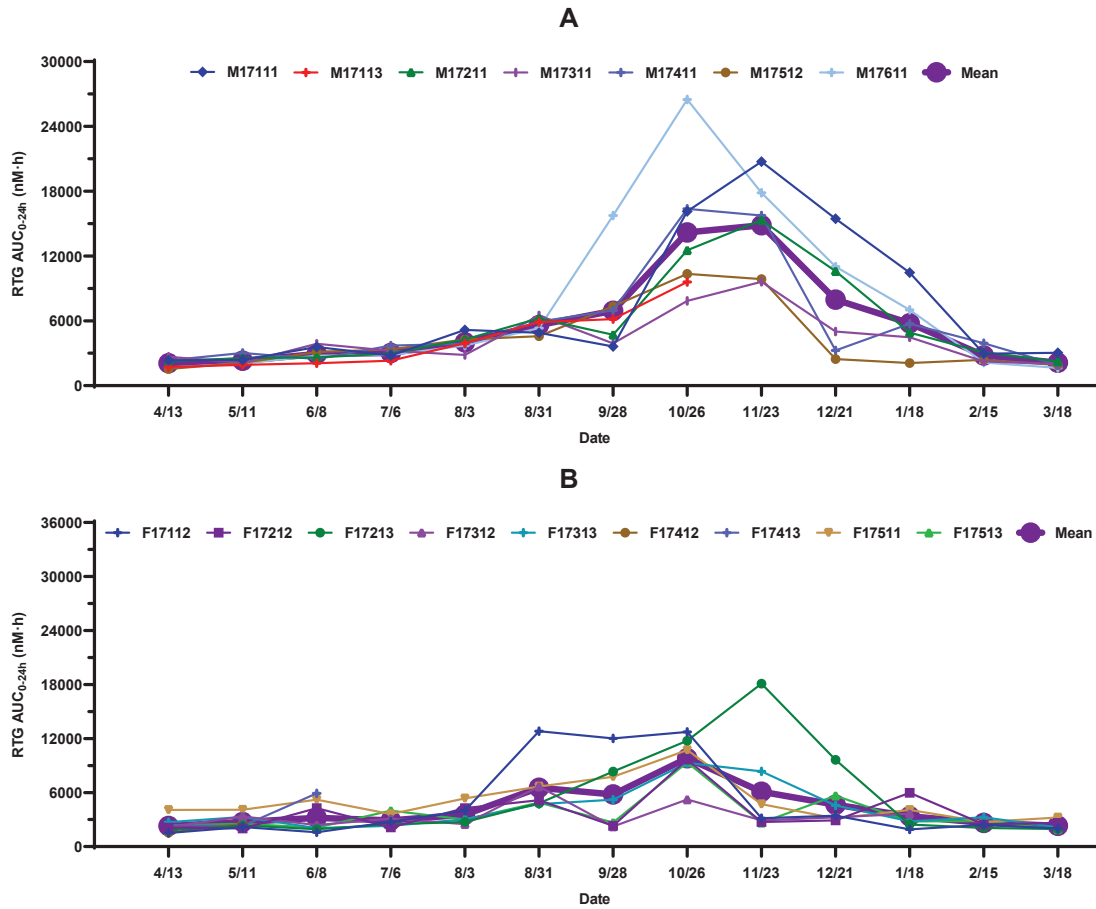


Fig. 4

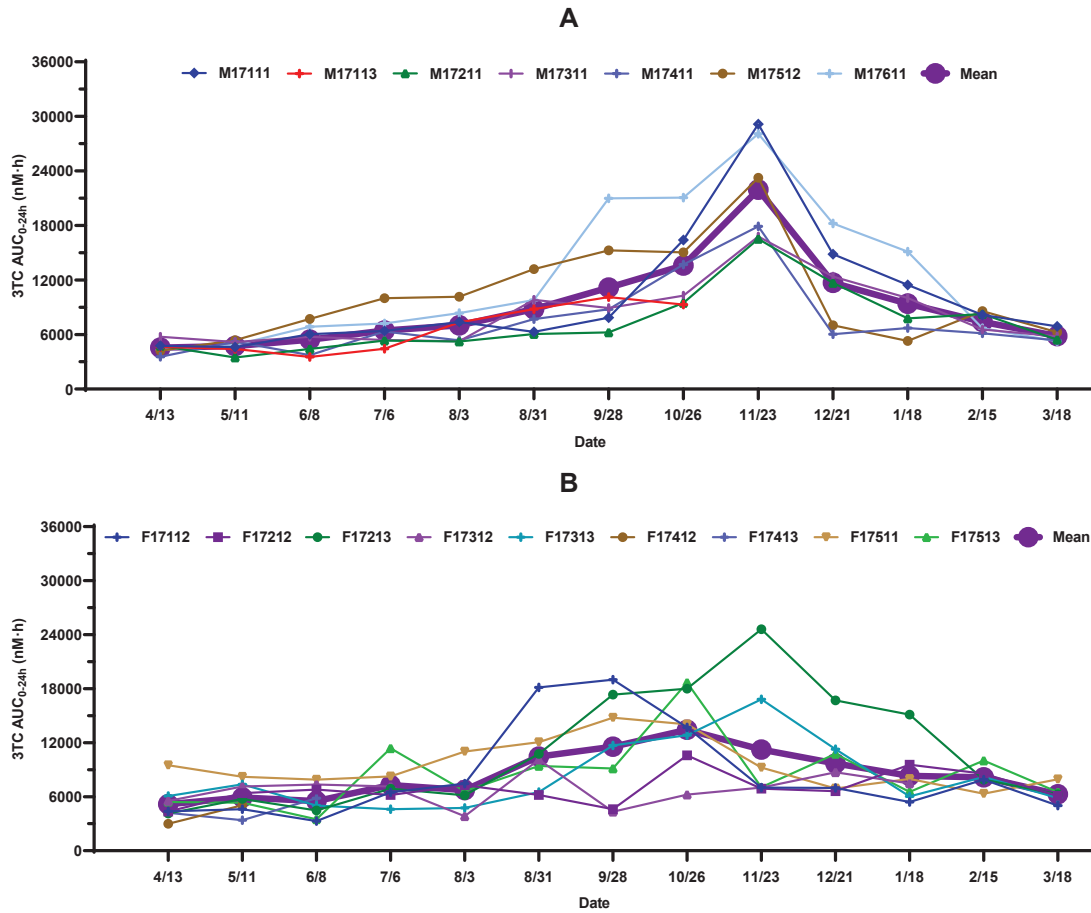


Fig. 5

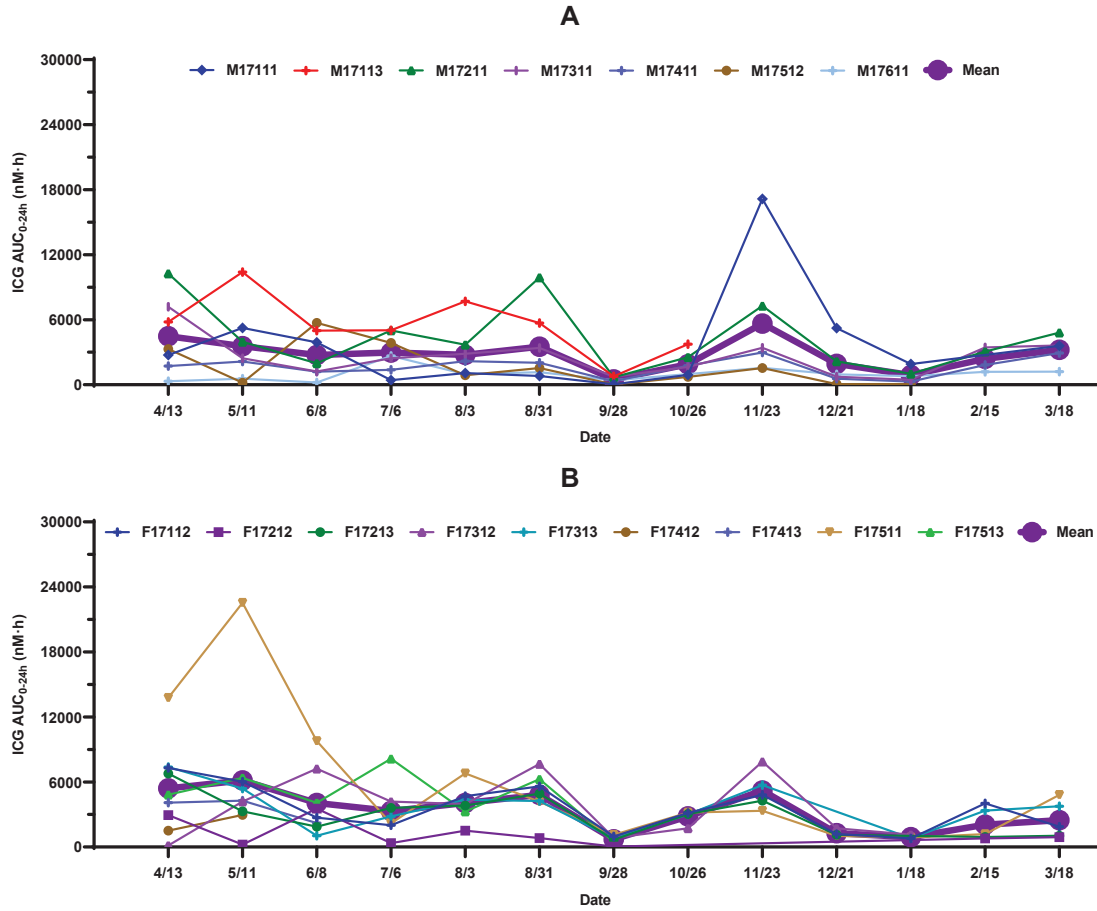


Fig. 6

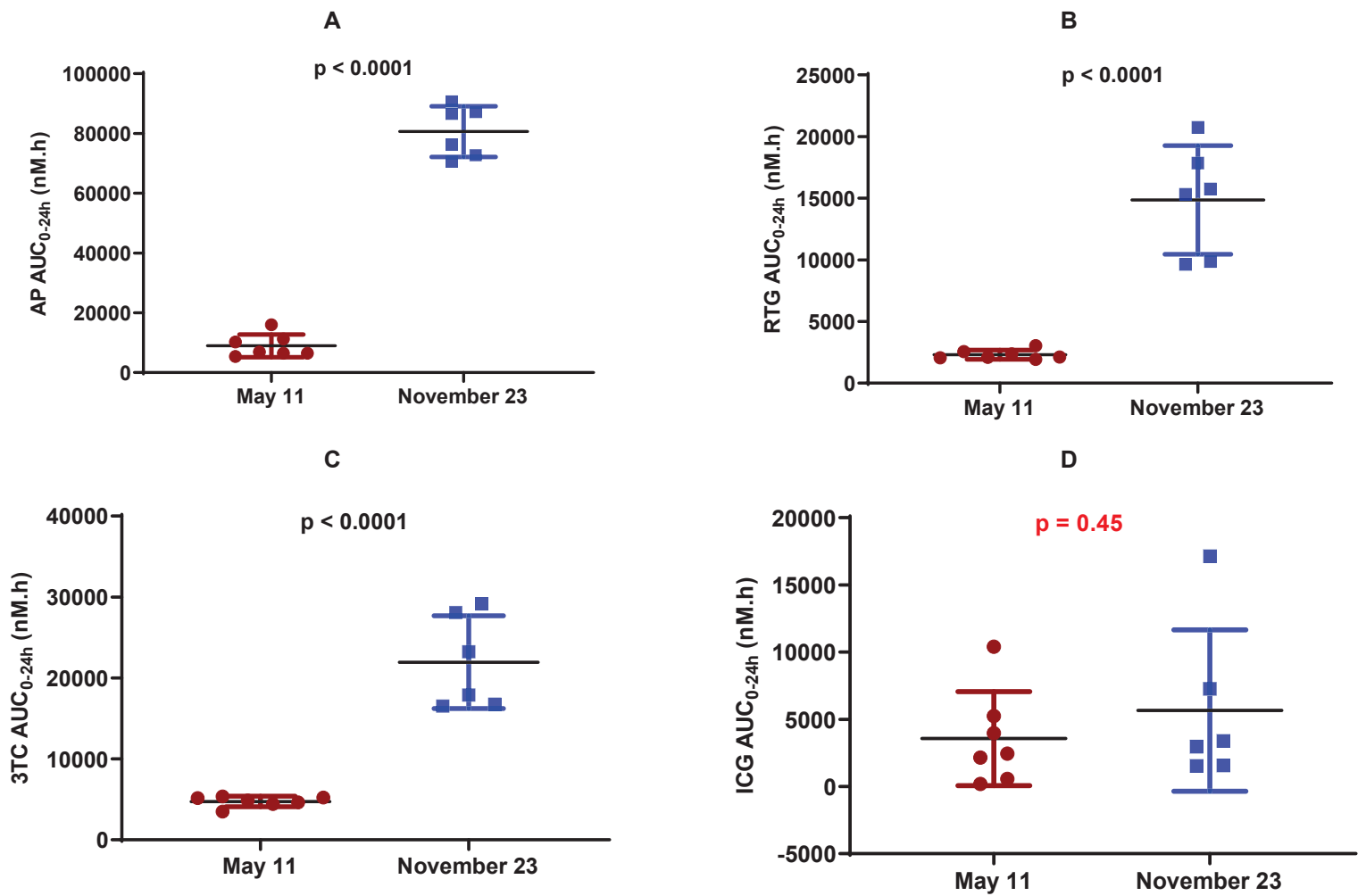


Fig. 7

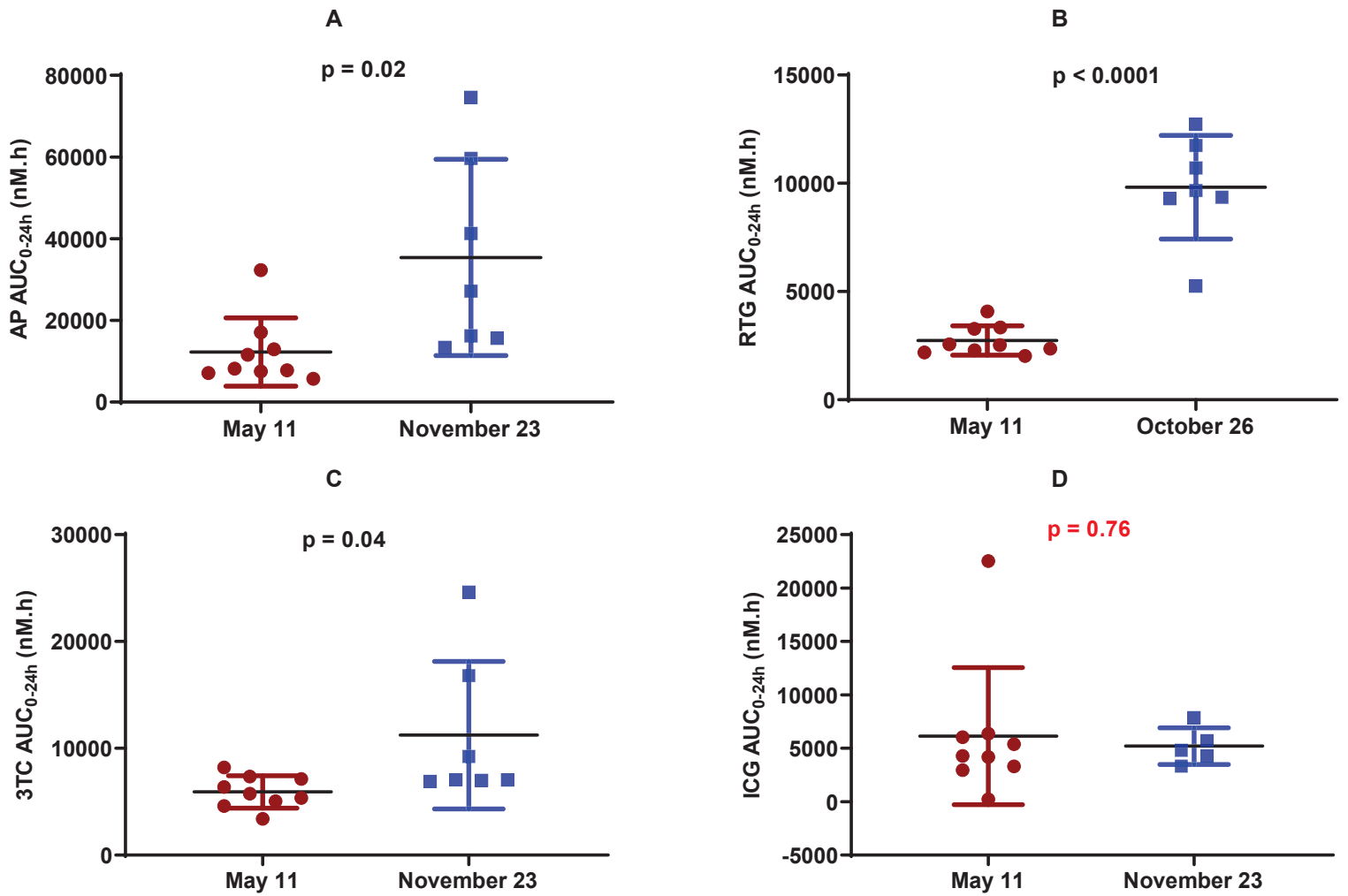
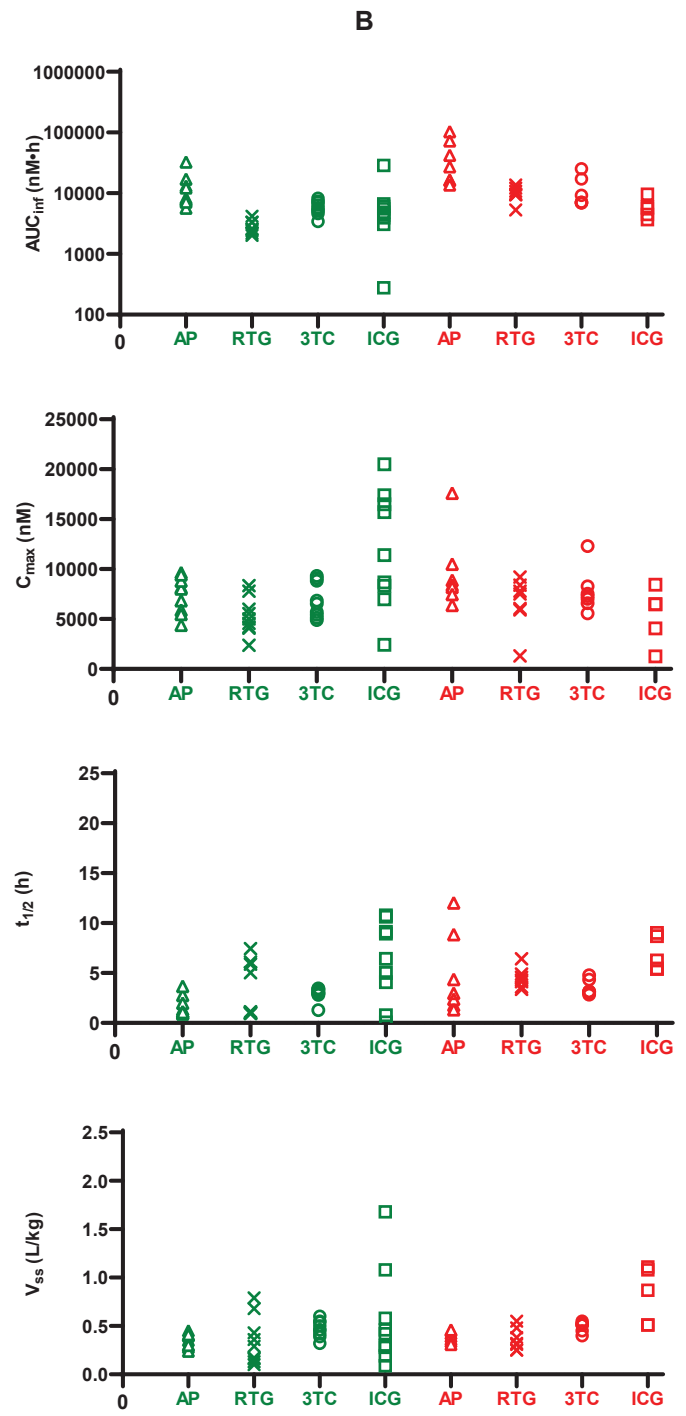
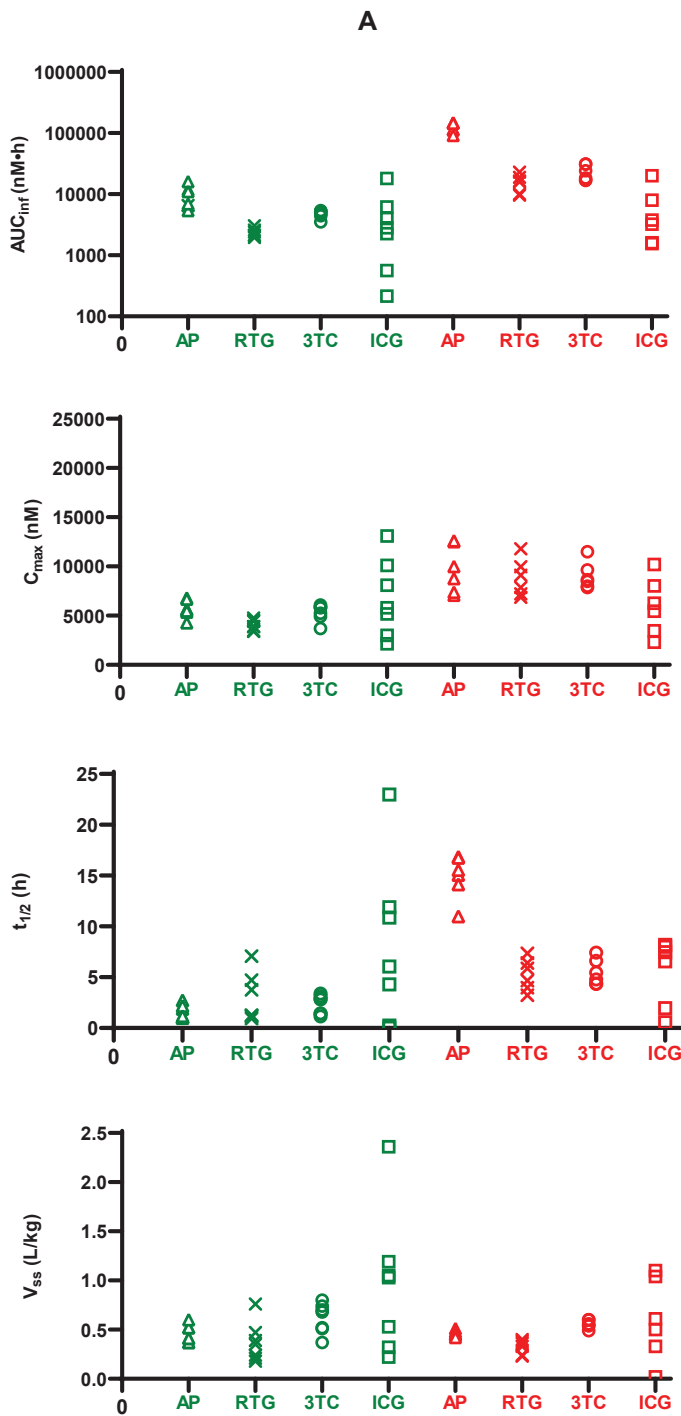


Fig. 8





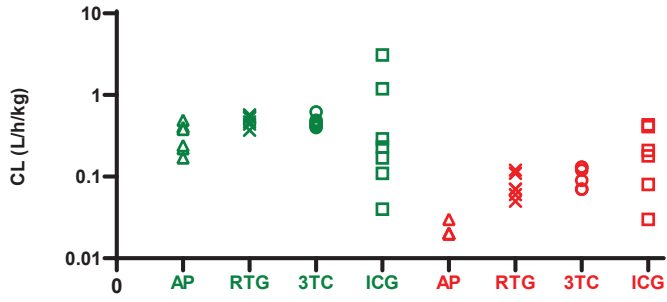
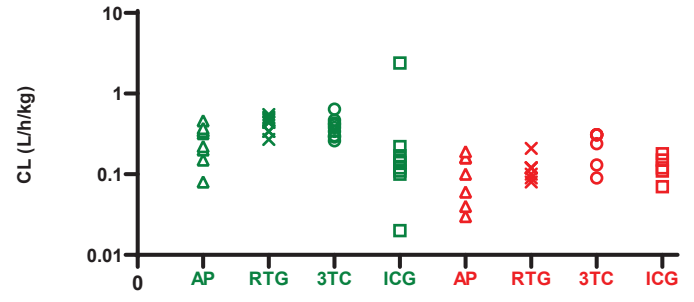


Fig. 9



Supplemental Data to:

**Characterization of Seasonal Pharmacokinetic Variability in  
Woodchucks**

Jim Zheng, Scott Balsitis, Rex Santos, Bill J. Smith and Raju Subramanian

Gilead Sciences, Inc., 333 Lakeside Dr, Foster City, CA 94404, USA

Drug Metabolism and Disposition

**ABBREVIATIONS:** 3TC, lamivudine; AP, antipyrene;  $AUC_{0-24h}$ , area under time-concentration curve from time 0 to 24 h;  $AUC_{inf}$ , area under time-concentration curve from time 0 to infinity; BPM, beats per minute; BT, body temperature; BW, body weight; CBC, complete blood count; CL, clearance;  $C_{max}$ , maximum concentration;  $E_h$ , hepatic extraction; h, hour; HPLC, high-performance liquid chromatography; HR, heart rate; ICG, indocyanine green; kg, kilogram; LBF, liver blood flow; min, minute; mL, milliliter; PK, pharmacokinetics; RTG, raltegravir; SD, standard deviation;  $t_{1/2}$ , terminal half-life;  $V_{ss}$ , steady-state volume of distribution.

## Supplemental Materials and Methods

### *Bioanalytical method for seasonal PK study*

A protein precipitation procedure was used for sample processing. Specifically, 300  $\mu\text{L}$  of 100 ng/mL caffeine, glyburide, carbamazepine and 50 nM 5-IT (5-(2-aminopropyl)indole) in methanol was added to a 50  $\mu\text{L}$  aliquot of each plasma sample with exception of the matrix blanks. Caffeine, glyburide, carbamazepine and 5-IT were used as the internal standard for antipyrine (AP), raltegravir (RTG), lamivudine (3TC) and indocyanine green (ICG), respectively. The matrix blank samples received 300  $\mu\text{L}$  of methanol only. The precipitated proteins were removed by centrifugation and supernatant was transferred into three sets of clean 96 deep-well plates. These transfers are:

Transfer 1: 50  $\mu\text{L}$  of supernatant was transferred into clean 96 deep-well plates. Plates were evaporated to dryness under a constant flow of nitrogen and reconstituted with 100  $\mu\text{L}$  of 95: 5: 0.1 water: acetonitrile: formic acid;

Transfer 2: 50  $\mu\text{L}$  of supernatant was transferred into a clean 96 deep-well plates. A 50  $\mu\text{L}$  aliquot of water was added to each sample;

Transfer 3: 100  $\mu\text{L}$  of supernatant was transferred into a clean 96 deep-well plates. Chromatography was accomplished on a MacMod ACE C18 column, 50 X 2.1 mm, 3  $\mu\text{m}$  (MAC-MOD, Chadds Ford, PA), maintained at ambient temperature. Mobile phase A (MPA) was 0.1% formic acid and 99.9% water, and mobile phase B (MPB) was 0.1% formic acid and 99.9% acetonitrile for AP, RTG and 3TC. The MPA was 10 mM ammonium acetate in 95:4:1 water: acetonitrile: formic acid, and the MPB was 10 mM ammonium acetate in 95:4:1 acetonitrile: water: formic acid for ICG.

An Agilent 1200 series high pressure binary pump (G1312) was used for elution and separation. A CTC PAL autosampler was used as part of a Cohesive (Thermo Scientific San Jose, CA) LX-2 multiplexed system. The liquid chromatograph gradients for AP, RTG, 3TC and ICG are shown in Supplemental Table S1. An API-5500 triple stage quadrupole (TSQ) mass spectrometer (Applied Biosystems, Foster City, CA) was equipped with an electrospray ionization interface and operated in positive ionization mode for quantitation with collision induced dissociation activation method. Mass spectra were acquired in multiple reaction monitoring (MRM) mode. The MRM channels for the test compounds and the internal standards are listed in Supplemental Table S2. The parameters for the TSQ mass spectrometer used for the analysis are: spray voltage: +5.5 kV; capillary temperature: 550°C; sheath gas: 50 (arbitrary unit); auxiliary gas: 50 (arbitrary unit). An aliquot of 3-12 µL was injected into the API-5500 liquid chromatography–tandem mass spectrometry system. Representative lower limits of quantitation were 5 nM for AP and 2 nM for RTG, 3TC, ICG in plasma from March 18, 2018. The corresponding upper limits of quantitation were 5000 nM for AP, RTG, 3TC and 10000 nM for ICG. R<sup>2</sup> values were great than 0.99 by either linear or quadratic curve fitting with weighting index of 1/x<sup>2</sup>. Retention time of AP, RTG, 3TC and ICG ranged from 1.55 to 1.62 min.

## **Supplemental Results**

### *Seasonal PK study clinical observations*

A female woodchuck, F17413, was observed with losing weight and foul odor on June 15, 2017. Mass was felt in abdomen and surgical anastomosis was done

on June 22, 2017. This animal died on June 24, 2017 from complication of blood loss following chronic state and surgery. Another female woodchuck, F17412, was found dead on June 26, 2017. Necropsy of F17412 showed thrombus in right jugular vein, right atrium, and right pulmonary artery. A male woodchuck, M17113, was found dead on December 8, 2017 due to hemorrhagic pneumonia. No other death or any additional clinical observation was reported.

## **Legends for Supplemental Tables**

Table S1. HPLC elution programs for AP, RTG, 3TC and ICG

Table S2. MRM channels for the test compounds and the internal standards

Table S3. PK parameters of AP, RTG, 3TC and ICG in woodchucks from pre-study on March 16, 2017 (data from mixed sex with mean  $\pm$  SD, n = 3)

## Legends for Supplemental Figure

Figure S1. Seasonal sex difference on November 23, 2017: A) AP; B) RTG; C) 3TC; D) ICG. Statistically significant sex difference was observed for AP ( $p = 0.0011$ ), RTG ( $p = 0.011$ ) and 3TC ( $p = 0.012$ ) but not for ICG ( $p = 0.88$ ).

Statistical analysis was performed using an unpaired, two-tailed, parametric t-test method (mean  $\pm$  SD,  $n = 6$  for male and  $n = 7$  for female).



SUPPLEMENTAL TABLE S1

HPLC elution programs for AP, RTG, 3TC and ICG

Time (second)	Step Comment	Flow Rate (mL/min)	AP		RTG		3TC		ICG	
			MPA (%)	MPB (%)	MPA (%)	MPB (%)	MPA (%)	MPB (%)	MPA (%)	MPB (%)
0 - 30	Step	0.700	90	10	70	30	100	0	55	45
30 - 150	Ramp	0.700	70	30	50	50	75	25	35	65
150 - 155	Ramp	0.700	5	95	5	95	5	95	5	95
155 - 180	Step	0.700	5	95	5	95	5	95	5	95
180 - 240	Step	0.700	90	10	70	30	100	0	55	45

SUPPLEMENTAL TABLE S2

MRM channels for the test compounds and the internal standards

Analyte	Compound ID	Parent Mass (m/z)	Product Mass (m/z)	Collision Energy (V)
Test compound	AP	189.1	77.2	30
Test compound	RTG	445.2	361.2	24
Test compound	3TC	230.0	112.1	20
Test compound	ICG	753.4	330.1	50
Internal Standard	Caffeine	195.2	138.0	37
Internal Standard	Glyburide	494.0	369.0	15
Internal Standard	Carbamazepine	237.0	194.0	13
Internal Standard	5-IT	393.1	260.9	25

SUPPLEMENTAL TABLE S3

PK parameters of AP, RTG, 3TC and ICG in woodchucks from pre-study on March 16, 2017 (data from mixed sex with mean  $\pm$  SD, n = 3)

Group ID	PK Parameters	AP		RTG		3TC		ICG		
		Mean	SD	Mean	SD	Mean	SD	Mean	SD	
individual formulation	AUC <sub>0-24h</sub> (nM•h)	33222	7671	3046	606	6815	1160	1621	1331	
	AUC <sub>inf</sub> (nM•h)	35100	7731	3059	608	6850	1141	1899	1678	
	C <sub>max</sub> (nM)	7340	788	4407	655	5770	436	3870	2115	
	t <sub>1/2</sub> (h)	5.70	0.72	2.12	1.54	2.46	0.99	6.63	5.78	
	V <sub>ss</sub> (L/kg)	0.74	0.49	0.25	0.06	0.54	0.11	1.52	0.98	
	CL	L/h/kg	0.08	0.02	0.38	0.07	0.32	0.06	0.96	1.18
		E <sub>h</sub> *	1.9%	0.5%	9.2%	1.6%	7.9%	1.4%	23%	29%

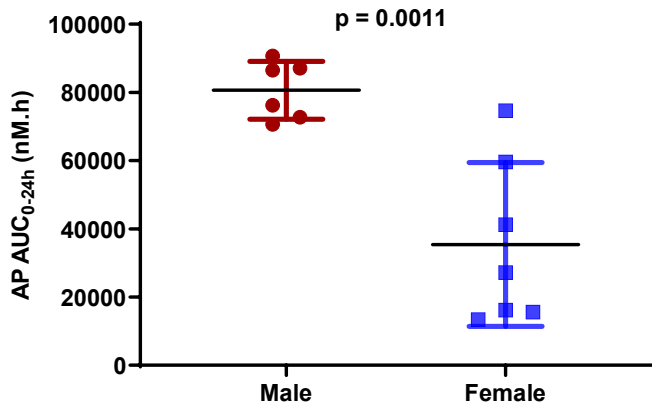
coformulation	AUC <sub>0-24h</sub> (nM•h)	25814	3313	3272	355	7932	1510	3262	1622
	AUC <sub>inf</sub> (nM•h)	26088	3420	3282	353	7944	1511	3871	1947
	C <sub>max</sub> (nM)	5593	76	4423	220	6987	709	7300	497
	t <sub>1/2</sub> (h)	3.79	0.36	1.11	0.10	2.80	0.08	11.2	5.9
	V <sub>ss</sub> (L/kg)	0.48	0.02	0.21	0.03	0.45	0.06	1.57	0.86
	CL	L/h/kg	0.10	0.01	0.34	0.04	0.28	0.05	0.22
E <sub>h</sub> *		2.5%	0.4%	8.4%	0.9%	6.8%	1.3%	5.5%	3.9%
<p>* The liver blood flow (LBF) in woodchucks was not published. We estimated the woodchuck LBF to be 4.1 L/h/kg based on allometric scaling. This value was used to calculate the hepatic extraction (E<sub>h</sub> = CL/LBF).</p>									

## Supplemental Figure

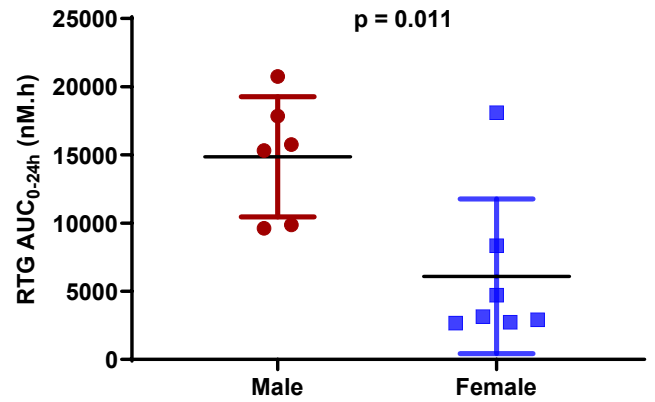
Fig. S1. Seasonal sex difference on November 23, 2017: A) AP; B) RTG; C) 3TC; D) ICG. Statistically significant sex difference was observed for AP ( $p = 0.0011$ ), RTG ( $p = 0.011$ ) and 3TC ( $p = 0.012$ ) but not for ICG ( $p = 0.88$ ).

Statistical analysis was performed using an unpaired, two-tailed, parametric t-test method (mean  $\pm$  SD,  $n = 6$  for male and  $n = 7$  for female).

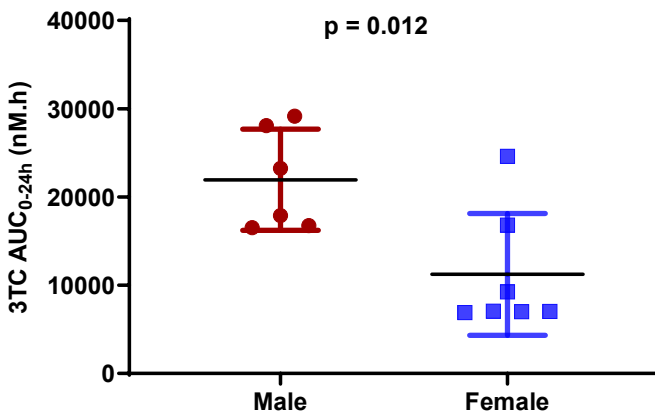
A



B



C



D

