

Application of Accelerator Mass Spectrometry to Characterize the Mass Balance Recovery and Disposition of AZD4831, a Novel Myeloperoxidase Inhibitor, Following Administration of an Oral Radiolabeled Microtracer Dose in Humans

**Chandrali Bhattacharya, Ann-Sofie Sandinge, Ryan A. Bragg, Maria Heijer,
Jingjing Yan, Linda C. Andersson, Ulrik Jurva, Marta Pelay-Gimeno, Wouter H.
J. Vaes, Rianne A. F. de Ligt, Malin Gränfors, Carl Amilon, Eva-Lotte Lindstedt,
Somasekhara R. Menakuru, Pavlo Garkaviy, Lars Weidolf, and V. Sashi Gopaul**

*Clinical Pharmacology and Quantitative Pharmacology, Clinical Pharmacology and
Safety Sciences, BioPharmaceuticals R&D, AstraZeneca, Gaithersburg, MD, USA
(C.B.)*

*DMPK, Research and Early Development, Cardiovascular, Renal and Metabolism,
BioPharmaceuticals R&D, AstraZeneca, Gothenburg, Sweden (A-S.S., J.Y., U.J.,
L.C.A.; V.S.G.)*

*Integrated Bioanalysis, Clinical Pharmacology and Safety Sciences,
BioPharmaceuticals R&D, AstraZeneca, Gothenburg, Sweden (M.H.)*

*Early Chemical Development, Pharmaceutical Sciences, BioPharmaceuticals R&D,
AstraZeneca, Cambridge, UK (R.A.B.)*

*Early Product Development, Pharmaceutical Sciences, BioPharmaceuticals R&D,
AstraZeneca, Gothenburg, Sweden (M.G.)*

TNO, Leiden, The Netherlands (M.P-G., W.H.J.V., R.A.F.dL.)

Quotient Sciences, Nottingham, UK (S.R.M.)

*Early Clinical Development, Research and Early Development, Cardiovascular,
Renal and Metabolism, BioPharmaceuticals R&D, AstraZeneca, Gothenburg,
Sweden (P.G.)*

*Formerly BioPharmaceuticals R&D, AstraZeneca, Gothenburg, Sweden (L.W., C.A.,
E-L.L.)*

Running Title Page

Running title (max 60 characters)

Mass balance recovery and disposition of AZD4831 in humans

Corresponding author

V. Sashi Gopaul, Pepparedsleden 1, 431 50 Mölndal, Sweden. Telephone: +46
72 549 68 86. E-mail: sashi.gopaul@astrazeneca.com

Pages/words

Text pages: 34

Tables: 6

Figures: 7

References: 41

Abstract word count: 250 [250]

Introduction word count: 744 [750]

Discussion word count: 1504 [1500]

Abbreviations

AE, adverse event

AMS, accelerator mass spectrometry

AUC, area under the plasma concentration-time curve

AUC_{inf}, area under the plasma concentration-time curve from dosing extrapolated to infinity

AUC_{last}, area under the plasma concentration-time curve from dosing to last measurable concentration

AUC_{0–96h}, area under the plasma concentration-time curve from 0–96 hours

CL/F, apparent total body clearance of drug from plasma

CL_R, renal clearance of drug from plasma

C_{max}, maximum observed plasma concentration

CV, coefficient of variation

DRM, drug-related material

hADME, human absorption, distribution, metabolism, and excretion

HF, heart failure

HFpEF, heart failure with preserved ejection fraction

HPLC, high-performance liquid chromatography

HRMS, high-resolution mass spectrometry

K_m , Michaelis constant, representing the substrate concentration at which the reaction rate is half of its maximal value

LC, liquid chromatography

LC-AMS, liquid chromatography-accelerator mass spectrometry

LC-MS, liquid chromatography-mass spectrometry

LC-MS/MS, liquid chromatography tandem mass spectrometry

LLOQ, lower limit of quantification

LSC, liquid scintillation counting

MAD, multiple ascending dose

MeCN, acetonitrile

MeOH, methanol

MPO, myeloperoxidase

MS, mass spectrometry

MS/MS, tandem mass spectrometry

QC, quality control

QTOF, quadrupole time of flight

RAF, relative activity factor

$t_{1/2}$, elimination half-life

T_{max} , time at maximum plasma concentration

$t_{1/2\lambda_z}$, half-life associated with the terminal slope of a semi-logarithmic concentration-time-curve

UGT, uridine diphosphate glucuronosyltransferase

UPLC, ultra-performance liquid chromatography

V_z/F , apparent volume of distribution

ABSTRACT

This study evaluated the mass balance and disposition of AZD4831, a novel myeloperoxidase inhibitor, in six healthy participants using a ^{14}C -labeled microtracer coupled with analysis by accelerator mass spectrometry (AMS). A single oral dose of 10 mg ^{14}C -AZD4831 (14.8 kBq) was administered as a solution, and ^{14}C levels were quantified by AMS in blood, urine, and feces over 336 hours post-dose. AZD4831 was rapidly absorbed and AZD4831 plasma concentrations declined in a biphasic manner, with a long half-life of 52 hours. AZD4831 was eliminated via metabolism and renal excretion. An N-carbamoyl glucuronide metabolite of AZD4831 (M7), formed primarily via UGT1A1, was the predominant circulating metabolite. Presumably, M7 contributed to the long half-life of AZD4831 via biliary elimination and hydrolysis/enterohepatic recirculation of AZD4831. On average, ~84% of administered ^{14}C -AZD4831 was recovered by 336 hours post-dose (urine 51.2%; feces 32.4%). Between 32–44% of the dose was excreted as unchanged AZD4831 in urine, indicating renal elimination as the major excretory route. Only 9.7% of overall fecal recovery was recorded in the first 48 hours, with the remainder excreted over 48–336 hours, suggesting most fecal recovery was due to biliary elimination. Furthermore, only 6% of unchanged AZD4831 was recovered in feces. Overall, the fraction of the administered AZD4831 dose absorbed was high. ^{14}C -AZD4831 was well tolerated. These findings contribute to increasing evidence that human absorption, distribution, metabolism, and excretion studies can be performed with acceptable mass balance recovery at therapeutically relevant doses and low radiolabel specific activity using an AMS- ^{14}C microtracer approach.

SIGNIFICANCE STATEMENT

Word limit: 80/80

In this study, the human absorption, distribution, metabolism, and excretion (hADME) of the novel myeloperoxidase inhibitor, AZD4831, was assessed following oral administration. This included investigation of the disposition of M7, the N-carbamoyl glucuronide metabolite. Resolution of challenges highlighted in this study contributes to increasing evidence that hADME objectives can be achieved in a single study for compounds with therapeutically relevant doses and low radiolabel specific activity by using an AMS-¹⁴C microtracer approach; thus, reducing the need for preclinical radiolabeled studies.

Introduction

Heart failure (HF) with preserved ejection fraction (HFpEF) occurs when the heart is unable to sufficiently fill with blood due to stiffness of the left ventricle and inability of the muscle to relax (Dunlay et al., 2017). HFpEF represents about half of all HF cases, and is highly prevalent in patients with hypertension, diabetes, obesity, metabolic syndrome, and chronic kidney disease (Oktay and Shah, 2015). Chronic HF is a leading cause of hospitalization in the US and represents a significant clinical and economic burden (McCullough et al., 2002; Husaini et al., 2011; Azad and Lemay, 2014; Agarwal et al., 2021).

Myeloperoxidase (MPO) is an abundant enzyme stored within primary granules of neutrophils and monocytes, and is not released until leukocyte activation and degranulation (Zhang et al., 2001). MPO is unique in its ability to generate reactive chlorinating species and promotes oxidative damage to host tissues at sites of inflammation, including atherosclerotic lesions (Podrez et al., 2000). Evidence supports that MPO acts as a modulator of vascular tone in vivo and identifies MPO as a systemic regulator of vasomotion and, thus, a potential therapeutic target for HF treatment (Zhang et al., 2001; Baldus et al., 2003; Brennan et al., 2003; Tang et al., 2007; Nelander et al., 2021).

AZD4831 — (*R*)-1-(2-(1-aminoethyl)-4-chlorobenzyl)-2-thioxo-2,3-dihydro-1H-pyrrolo[3,2-*d*]pyrimidin-4(5H)-one — is a novel, covalent MPO inhibitor with high selectivity for MPO at low oral doses (Inghardt et al., 2022). In Phase I studies in healthy volunteers, AZD4831 was rapidly absorbed with a long plasma half-life,

dose-dependently inhibited MPO in whole blood, and was generally well tolerated (Gan et al., 2019; Nelander et al., 2021). In the Phase IIa SATELLITE study in HFpEF patients (NCT03756285), target engagement (MPO inhibition) was confirmed and AZD4831 was well tolerated (Lam et al., 2021).

A microtracer approach combined with accelerator mass spectrometry (AMS) has several strengths over conventional liquid scintillation counting (LSC)-based methodologies for human absorption, distribution, metabolism, and excretion (hADME) studies (Young et al.; Beaumont et al., 2014; Flach et al., 2016; Spracklin et al., 2020). AMS allows detection of ^{14}C administered at 3.7–37 kBq (0.1–1 μCi), compared with conventional doses typically ranging from 1850–7400 kBq (50–200 μCi). As individuals receive minimal radiation exposure, the need for preclinical studies to support dosimetry calculations is spared, and performance of the clinical trial is consequently expedited (Combes et al., 2003; Lappin and Garner, 2003; Spracklin et al., 2020), an important factor in the development of AZD4831. Furthermore, initial studies with high specific activity ^{14}C -AZD4831 highlighted a potential radiochemical stability issue that may have impacted shelf-life and potential utility to support clinical studies (unpublished observations). Such radiochemical stability risks can be mitigated using a microtracer approach where materials with low specific activity can be used (Beumer et al., 2007). Finally, AMS allows for detection of microtracer levels over a long follow-up (Lappin and Garner, 2003; Beumer et al., 2007; Gupta et al., 2018), radiocarbon usage is reduced, and problems with radioactive waste disposal are reduced.

Roffel et al. reviewed >40 oral hADME studies involving administration of regular or low doses of ^{14}C combined with either LSC or AMS analysis (Roffel et al., 2016). Among the 12 studies conducted with low doses of ^{14}C , six showed recoveries of $\geq 90\%$. Low-dose studies were more often conducted on drugs with a plasma elimination half-life of the parent drug of >100 hours (5/12 studies) than regular-dose studies (1/26 studies) to avoid exposure to radiation burden. However, the authors concluded that both low- and regular-dose hADME studies provide adequate data to support decision making for further drug development (Roffel et al., 2016).

We describe herein the human disposition of 10 mg ^{14}C -AZD4831 (14.8 kBq; 0.4 μCi) as a solution following a single oral dose, i.e., the intended therapeutic administration route. The study used a ^{14}C -labeled microtracer coupled with AMS to evaluate mass balance, pharmacokinetics, and extent of distribution of total ^{14}C into the blood, as well as routes and rates of elimination of AZD4831 in healthy volunteers. To support the pharmacokinetic objective, we separately investigated the potential for racemization of AZD4831, itself an *R*-enantiomer. During the clinical mass balance study, samples were collected for metabolite profiling and identification. To further understand the disposition of M7, we complemented the mass balance studies by investigating the enzymes involved in the metabolic pathway of AZD4831 to form M7, the predominant circulating N-carbamoyl glucuronide in vitro, as recommended by health authorities (U.S. Food & Drug Administration, 2020), and also the absorption and elimination of M7 in rats.

Materials and Methods

Chemicals, Reagents, and Equipment

AstraZeneca supplied unlabeled AZD4831, which was manufactured by SynTheAll Pharmaceutical Co. (Shanghai, China). Radiolabeled ^{14}C -AZD4831 (**Fig. 1**) was manufactured by Pharmaron (Rushden, UK) following the procedure described previously (Inghardt et al., 2022). The solid material was isolated following crystallization from ethanol and water. Quotient Sciences (Nottingham, UK) prepared ^{14}C -AZD4831 oral solution 10 mg (14.8 kBq; 0.4 μCi) as a clear, colorless, pH-adjusted solution (pH 3), at the clinical site. Metabolite M7 was synthesized as described previously (Jurva et al., 2022). Acetanilide and paracetamol were purchased from Sigma-Aldrich (St. Louis, MO, USA). ANU sucrose was purchased from the National Institute of Standards and Technology (Gaithersburg, MD, USA). Uridine 5'-diphosphoglucuronic acid, magnesium chloride, alamethicin, D-saccharolactone, β -estradiol, 4-methyl umbelliferone, lamotrigine, 1-naphthol, propofol, zidovudine, and oxazepam were purchased from Sigma-Aldrich (Stockholm, Sweden). 5,5-diethyl-2-imino-1,3-diphenyl-1,3-diazinane-4,6-dione was supplied by Compound Management AstraZeneca. BD SupersomesTM Enzymes Baculovirus-Insect Cell-Expressed Human uridine diphosphate glucuronosyltransferase (UGT) was purchased from Corning Life Sciences B.V. (Amsterdam, The Netherlands). Isoflurane (Forene[®]) was purchased from Abbott GmbH & Co. (KG, Wiesbaden, Germany). A list of the analytical equipment used in the hADME study is shown in **Table S1**. Analytical details relating to the supporting

studies (e.g., configurational stability, in vitro phenotyping, and rat studies) are provided in the **Supplemental Information**.

Mass Balance Clinical Study Design

A Phase I, open-label, non-randomized, single-dose, single-center, single-period mass balance study was conducted in healthy male volunteers at Quotient Sciences (Nottingham, UK; NCT04407091). The primary objective was to determine cumulative (urine and feces) mass balance recovery after a single oral dose of ^{14}C -AZD4831 from pre-dose until 336 hours post-dose. Key secondary objectives over the same period were to determine routes and rates of elimination of ^{14}C -AZD4831, the pharmacokinetic profile of AZD4831 in plasma and urine, and the metabolic profiles of AZD4831 in plasma, urine, and feces. The total duration of the study (from screening through follow-up) was ~8 weeks. Participants were screened up to 28 days before dosing, were admitted to the study center prior to drug administration (day -1), and remained resident until 336 hours post-dose (day 15). Participants returned for a follow-up visit 7–10 days after discharge.

The study adhered to the principles of the Declaration of Helsinki and International Council for Harmonisation Good Clinical Practice Guidelines, and was approved by the Office for Research Ethics Committees Northern Ireland, Lisburn. The administration of radioactive substances was conducted under the Department of Health Administration of Radioactive Substances Advisory Committee. All participants provided written informed consent prior to any study procedures.

Participants

Participants were enrolled from a panel of volunteers recruited by Quotient Sciences. Healthy male volunteers aged 18–65 years, with a body mass index of 18.0–30.0 kg/m² and without clinically relevant disease, were eligible for the study. Key inclusion and exclusion criteria are provided in **Table S2**.

Rationale for Dose Selection

Single oral doses of AZD4831 from 5 mg to 405 mg and multiple doses from 5 mg to 15 mg were previously studied in healthy participants (Gan et al., 2019; Nelander et al., 2021). Target engagement studies have revealed potentially beneficial clinical effects after an MPO inhibition of 50%, which is anticipated to be achieved or exceeded at steady state after once-daily dosing of 5 mg AZD4831 (Lam et al., 2021; Nelander et al., 2021). Due to the long half-life of AZD4831 in humans, there is a 2–3-fold accumulation in exposure following once-daily dosing to steady state compared with single dose administration (Nelander et al., 2021). Therefore, a single oral dose of 10 mg was selected for this study to cover the proposed therapeutic exposure range.

The ¹⁴C dose was determined to be adequate to allow the study objectives to be met using AMS methodology, but below the upper limit of a microtracer dose. The associated radiation exposure complied with the guidance from the International Commission on Radiological Protection (1992) Guidelines for Category I studies (<0.1 mSv), and a dose ≤16.4 kBq (0.44 μCi) was selected, resulting in a total effective dose of 9.2 μSv.

Collection of Blood Samples and Excreta

Following dosing, whole blood, plasma, urine, and fecal samples were collected up to 336 hours post-dose for study assessments. For AZD4831 and total ^{14}C analysis in plasma, samples were collected before dosing and at 0, 0.25, 0.5, 1, 1.5, 2, 3, 4, 5, 6, 8, 10, 12, 24, 36, 48, 72, 96, 120, 144, 168, 192, 216, 240, 264, 288, 312, and 336 hours post-dose. Whole blood samples for total ^{14}C were collected before dosing and at 1, 3, 5, 8, 12, 24, 36, 48, 72, 96, 120, 168, and 336 hours post-dose. Blood samples used for metabolite profiling and identification in plasma were collected before dosing and at 0.5, 1, 2, 3, 4, 6, 8, 12, 24, 36, 48, 72, and 96 hours post-dose. Blood samples for quantification of AZD4831, total ^{14}C , and metabolite profiling and identification were collected into tubes containing potassium ethylenediaminetetraacetic acid as anticoagulant. After mixing and centrifugation at $1500 \times g$ for 10 minutes at 4°C , plasma was harvested and transferred to 5 mL (pre-dose) or 3.5 mL (post-dose) polypropylene tubes. Plasma samples were frozen within 70 minutes of collection and were stored at -80°C or below until analysis.

Urine samples for the analysis of AZD4831, total ^{14}C , and metabolite profiling and identification were collected pre-dose (the first void of the day), at 0–6, 6–12, 12–24, 24–36, and 36–48 hours post-dose, and then daily (at 24-hour intervals) until discharge. Samples were collected into individual 500 mL polypropylene containers, weighed, pooled for the specific intervals (into 2 L and 4 L containers), and stored at $2-8^\circ\text{C}$. Samples were separated into aliquots of 2–5 mL for total ^{14}C analysis, metabolite profiling and identification, and analysis of AZD4831.

Fecal samples for total ^{14}C analysis, metabolite profiling and identification, and analysis of AZD4831 were collected pre-dose (between admission and before dosing) and then daily (all fecal samples at 24-hour intervals) until discharge. Samples were collected into individual propylene containers, weighed, pooled for the specific intervals, and stored at -20°C until analysis.

Determination of Total ^{14}C -concentrations by AMS Analysis

Combustion AMS combines an elemental analyzer for sample combustion and total carbon measurement, interfaced for carbon dioxide (CO_2) transfer using a zeolite concentration step to the AMS, which determines the $^{14}\text{C}/^{12}\text{C}$ ratio (van Duijn et al., 2014). The combination of total carbon in a defined sample volume with the $^{14}\text{C}/^{12}\text{C}$ ratio provides the ^{14}C concentration. Urine and fecal samples (after homogenization) were analyzed individually to determine total ^{14}C for the mass balance analysis, using combustion AMS. Plasma and whole blood samples were also analyzed for total ^{14}C to assess the pharmacokinetic profile of total ^{14}C and to determine blood-plasma partitioning. In short, an aliquot of 5 μL of each blood or plasma sample, 15 μL of each urine sample, and 30 mg of each fecal homogenate sample (diluted or undiluted with blank matrix) were dried and placed in the elemental analyzer, which acted as an autosampler for combustion AMS analysis (van Duijn et al., 2014). Fecal homogenates were analyzed in triplicate; the lower limit of quantification (LLOQ) in fecal homogenates was 2.78 mBq/g homogenate, which equals a LLOQ of AZD4831 of 27.6 pmol Eq. per gram of feces. Plasma LLOQ was 1.51 mBq/mL, which equals a LLOQ of AZD4831 of 3.00 nmol Eq/L.

Whole blood LLOQ was 5.28 mBq/mL, which equals a LLOQ of AZD4831 of 10.5 nmol Eq./L. Urine LLOQ was 1.08 mBq/mL, which equals a LLOQ of AZD4831 of 2.15 nmol Eq./L. All measured ^{14}C levels were corrected for individual background values from respective pre-dose or blank samples.

Preliminary recovery analysis showed low overall excretion of ^{14}C for urine samples. Since AZD4831 and its metabolites were potentially bound to the plastic of the collection containers, an extended sample processing was performed for the urine samples to release drug material from the surface of plastic sample tubes and improve recovery (details given in **Supplemental Information**). Extended processing of plasma and fecal samples was not pursued.

Sample Pooling for Metabolite Profiling and Identification

The methodology for metabolite profiling and identification was different to that used to determine total ^{14}C . Based on the total ^{14}C results, a pooling strategy for metabolite profiling activities was determined. For plasma samples, a Hamilton pool was prepared for each participant representing the area under the plasma concentration-time curve (AUC) from 0–96 hours ($\text{AUC}_{0-96\text{h}}$) by combining volumes in proportion to the time interval between individual samples (Hamilton et al., 1981). These six pooled samples were combined into a single overall $\text{AUC}_{0-96\text{h}}$ pooled sample by equivolumetric mixing of each participant's pool. Urine and fecal samples were pooled over a 0–336-hour interval for each participant (including all timepoints assessed). Urine pools were prepared by using equal percentages per timepoint based on volume, and a single overall urine pool was then prepared by

equivolumetric mixing of each participant's pool. To prepare a pool of fecal homogenates, a 0–336 hour pool of homogenates was made for each subject using an equal percentage of homogenate per timepoint (based on the total weight of fecal homogenates); individual fecal pools were then mixed using an equal weight of pool from each subject.

To generate liquid chromatography (LC)-AMS with high-resolution mass spectrometry (HRMS) metabolite profiles in all matrices, the pooled samples were extracted (plasma and fecal homogenates) by protein precipitation with cold methanol/acetonitrile (MeOH/MeCN; 1/1, v/v). Following centrifugation, the supernatant was removed and mixed with 5 μ L of dimethyl sulfoxide and evaporated to dryness under nitrogen and reconstituted in MeOH/MeCN/H₂O (12.5/12.5/75, v/v/v). An aliquot of the reconstituted solution was subsequently injected onto an ultra-performance LC (UPLC; Waters Corp., Milford, MA, USA) system coupled to a HRMS (Q Exactive, Thermo Fisher Scientific, Waltham, MA, USA). The pooled urine sample was centrifuged prior to injection onto the LC-AMS-HRMS. The eluate was split between the fraction manager (approximately 58%) to provide the fractions used offline to generate the metabolite profiles by AMS analysis and the Q Exactive (approximately 42%) to provide online HRMS data for metabolite identification. The split ratios were determined by collecting the entire flow from the split arm to the fraction collector, weighing the collected material, and determining its density. Knowing the total flow coming out of the column, the ratios were then determined. Extraction efficiencies for plasma and fecal homogenate (93% and 69%), and column recoveries for plasma, urine, and fecal homogenate (101%, 94%, and 97%,

respectively) were deemed adequate. Consequently, LC-AMS metabolite profiles were generated quantitatively together with the corresponding LC-mass spectrometry (MS) profiles. Data dependent tandem MS (MS/MS) was applied to obtain fragmentation spectra for both known and unknown metabolites. The analytical details for metabolite characterization are described extensively and reported separately (Jurva et al., 2022). Analytical details relating to the chromatographic and mass spectrometric conditions used are summarized in **Table S3**; the latter being based on those described previously (Holmberg et al., 2022).

Analysis of Pharmacokinetics of Non-radiolabeled AZD4831

Plasma concentrations of AZD4831 were determined using liquid-liquid extraction followed by LC-MS/MS detection. After addition of internal standard and 2% ammonium hydroxide in water to the plasma aliquot, samples were extracted with ethyl acetate. The organic layer was removed, and the extract was evaporated to dryness under nitrogen at 40°C, reconstituted in acetonitrile: water: formic acid (20/80/0.2, v/v/v), and an aliquot analyzed by LC-MS/MS. Urine concentrations of AZD4831 were determined using sample dilution followed by LC-MS/MS analysis. The LLOQ of AZD4831 in plasma and urine was 2 nmol/L and 20 nmol/L, respectively. Both methods were validated prior to sample analysis and published (Gan et al., 2019; Nelander et al., 2021), and all study samples were analyzed within the confirmed storage periods. The results from the in-study quality control (QC) samples, calibration standards, and incurred sample re-analysis samples were

evaluated, and it was concluded that both methods performed acceptably for this study (data not shown). The fraction of ^{14}C -AZD4831 in the 10 mg dose was insignificant (~0.2% based on mass) and so was not accounted for in the pharmacokinetic calculations.

Pharmacokinetic Analysis

The pharmacokinetic parameters for AZD4831 and total ^{14}C were estimated by non-compartmental analysis methods using Phoenix[®] WinNonlin[®] software (v8.0, Certara Inc., USA). Pharmacokinetic parameters measured included the following: the maximum observed plasma concentration (C_{max}); AUC from dosing extrapolated to infinity (AUC_{inf}); AUC from dosing to last measurable concentration (AUC_{last}); the time from dosing at which C_{max} was apparent (T_{max}); elimination half-life ($t_{1/2}$); half-life associated with the terminal slope (λ_z) of a semi-logarithmic concentration-time-curve ($t_{1/2\lambda z}$); apparent total body clearance of drug from plasma (CL/F); apparent volume of distribution (V_z/F); and renal clearance of drug from plasma (CL_R).

Safety Analysis

During each study visit, participants were questioned regarding the occurrence of any adverse events (AEs; serious and non-serious), and events were documented. Other safety measures included clinical laboratory parameters, vital signs (blood pressure, heart rate, oral temperature, respiratory rate), electrocardiogram, and physical examinations.

Configurational Stability of AZD4831 in Humans

The potential for chemical or metabolic racemization of AZD4831 to its corresponding *S*-enantiomer was investigated using chiral LC-MS/MS. While the determination of the potential for racemization of AZD4831 was not a prespecified objective of the hADME study, it was included in this article to rationalize the use of non-chiral LC analysis in the hADME study of AZD4831, itself an *R*-enantiomer. Human plasma samples from healthy volunteers dosed with AZD4831 during the multiple ascending dose (MAD) study were pooled (Nelander et al., 2021; Jurva et al., 2022). Calibration standards, QC samples, and plasma samples, including blanks, were processed using protein precipitation with MeCN and analyzed by LC-MS/MS to measure the levels of AZD4831 and its *S*-enantiomer separately. Additional detail is provided in the **Supplemental Information**.

In Vitro Phenotyping Studies

Phenotyping of UGTs Responsible for the Formation of Metabolite M7

Based on the recommendations from the US FDA (U.S. Food & Drug Administration, 2012) for compounds with glucuronidation $\geq 25\%$ of total metabolism, seven recombinant UGT isoforms were selected for this phenotyping study. Recombinant UGT enzymes 1A1, 1A3, 1A4, 1A6, 1A9, 2B7, and 2B15 were pre-incubated with the pore-forming agent alamethicin (25 $\mu\text{g}/\text{mL}$) for 30 minutes on ice before the addition of 4.0 mM magnesium chloride, 0.12 mM D-saccharolactone, and 2.5–200 μM of control substrates (**Table S4**) or 10 μM of AZD4831. After 10 minutes pre-incubation with shaking at 37°C in 95% air, 5% CO₂, and saturated

humidity in a HeraCell™ 150i incubator (Thermo Fisher Scientific, Waltham, MA, USA), the reaction was initiated by the addition of the co-factor uridine-5'-diphosphoglucuronic acid (5.0 mM). The reaction was conducted in potassium phosphate buffer 0.1 M, pH 7.4 (control substrates) or sodium bicarbonate buffer 0.1 M, pH 7.4 (AZD4831) and H₂O, for a final incubation volume of 250 µL. Aliquots were taken at 0.5, 60, and 180 minutes, and the reaction was stopped with MeCN containing 5% formic acid and 100 nM of the internal standard 5,5-diethyl-1,3-diphenyl-2-iminobarbituric acid. All reactions were run in triplicates. The pH of the reaction was monitored over the 3-hour incubation and remained neutral during the course of the experiment.

Metabolite Analysis

Formation of M7, the N-carbamoyl glucuronide of AZD4831, and glucuronide metabolites of control substrates for the individual recombinant UGT enzymes was analyzed by UPLC-quadrupole time of flight-MS (UPLC-QTOF-MS). The percent contribution from each of the seven tested isoforms to the metabolism of AZD4831 to M7 was estimated using relative activity factors (RAFs) previously determined by Busse et al (Busse et al., 2020) (**Table S5**). The percent contribution for all of the individual isoforms was obtained for the carbamoyl glucuronide formation pathway by dividing the scaled activity by total activity as follows:

$$\text{Response}_{r\text{UGT}} = \text{Peak Area}_{r\text{UGT}} / \text{Peak Area}_{\text{IS}}$$

$$\text{Response}_{\text{Scaled-rUGT}} = \text{Response}_{r\text{UGT}} \times \text{RAF}_{\text{UGT}}$$

$$\% \text{ Contribution}_{\text{UGT1A1}} = \text{Response}_{\text{Scaled-rUGT1A1}} / \sum \text{Response}_{\text{Scaled-rUGTs}}$$

The analytical details for the study are described in the **Supplemental Information**.

In Vivo Pharmacokinetics of M7 in Rats

Determination of the in vivo pharmacokinetics of M7 in rats was not a prespecified objective of the hADME study, but it was performed to further understand the disposition of M7 from a preclinical perspective and strengthen the interpretation of the hADME data. Two days prior to dosing, male Han Wistar rats were prepared by cannulation of the left carotid artery for blood sampling and by cannulation of the right jugular vein for intravenous administration. The catheters were filled with heparin (100 IU mL⁻¹), exteriorized at the nape of the neck, and sealed. Surgery was performed under anesthesia with isoflurane. After surgery, the rats were housed individually with free access to food and water. Approximately 16 hours prior to dosing, the animals were deprived of food and fasted until 4 hours after dosing; animals had free access to drinking water throughout. On the experiment day metabolite M7, the N-carbamoyl glucuronide of AZD4831, was administered intravenously at a dose of 5 mg/kg in 100% saline into the jugular vein, and orally at a dose of 30 mg/kg (0.5% HMPC and 0.1% Tween in water) by oral gavage. At pre-defined timepoints (before dosing, and at 1, 2, 4, 8, and 24 hours after dosing) blood samples ~0.150 mL were withdrawn from the carotid artery. Blood samples were collected in heparinized plastic tubes and centrifuged, within

30 minutes, for 5 minutes at 10,000 × g and at 4°C. Plasma was transferred to a 96-well plate and stored at –20°C until analysis by LC-MS/MS.

Results

Configurational Stability of AZD4831

Using chiral LC-MS/MS for human plasma samples from the MAD study, levels of the *S*-enantiomer of AZD4831 were below the LLOQ (3.89 nmol/L) in the pooled plasma samples at individual timepoints, the AUC_{0–24h} plasma pooled samples, or each participant's plasma samples (**Table 1**). As shown in **Fig. 2**, representative overlaid chiral chromatograms of extracts of plasma samples from participants receiving AZD4831 and plasma samples spiked with the *S*-enantiomer at 3.1 nM and 6.2 nM indicated that racemization of AZD4831 was not observed in humans. Therefore, this confirmed that analysis of AZD4831 conducted by non-chiral LC-MS/MS in the clinical mass balance study was justified.

Clinical Mass Balance Study

Participants

Six healthy males aged 22–39 years were enrolled in the study. Four participants were White (66.7%) and two were Black or African American (33.3%), mean (standard deviation) body mass index was 27.5 (1.3) kg/m², no participants were current smokers, and all had an alcohol consumption of 0–10 units per week. Demographics and baseline characteristics of participants are summarized in **Table S6**.

Pharmacokinetics of AZD4831

Plasma

Following a single oral dose of ^{14}C -AZD4831 10 mg (as a solution), AZD4831 was detected in plasma from the first sampling timepoint at 0.25 hours onwards in all participants (**Fig. 3A**). Pharmacokinetic analysis was calculated from concentration profiles generated by LC-MS/MS. Pharmacokinetic parameters of ^{14}C -AZD4831 are presented in **Table 2**. T_{max} was reached between 0.5 and 6.1 hours post-dose and concentrations then declined in a biphasic manner and remained quantifiable from 96 to 168 hours post-dose. Terminal slopes were reliably determined for all participants and resulting values of $t_{1/2}$ ranged from 36.3–73.4 hours, with a geometric mean $t_{1/2}$ of 52.3 hours (**Table 2**).

Urine

An average of 44.4% (based on unlabeled compound analysis of urine samples by LC-MS/MS) of the dose administered was recovered as unchanged AZD4831 in urine by the end of the sampling period (336 hours), with about 15.3% being recovered within the first 24 hours post-dose.

Pharmacokinetics of Total ^{14}C in Plasma

Following a single oral dose of ^{14}C -AZD4831 10 mg (as a solution), total ^{14}C was detected in plasma from the first sampling timepoint at 0.25 hours onwards in all participants (**Fig. 3A**). Pharmacokinetic parameters of total ^{14}C are presented in

Table 2. T_{\max} occurred between 3 and 8 hours post-dose. Following C_{\max} , plasma total ^{14}C declined in a monophasic or biphasic manner and remained quantifiable for up to 336 hours post-dose. Terminal slopes were reliably determined for all participants and resultant values of $t_{1/2}$ ranged from 62.2–83.5 hours, with a geometric mean $t_{1/2}$ of 73.5 hours (**Table 2**). The concentration profile of total ^{14}C following administration of a single oral dose of ^{14}C -AZD4831 is shown in **Fig. 3A**.

Blood-plasma Partitioning of ^{14}C -AZD4831–derived Radioactivity

Total ^{14}C was quantifiable in whole blood in all participants from the first sampling timepoint at 1 hour post-dose and remained quantifiable over 120–336 hours post-dose. The geometric mean (%CV) whole blood-to-plasma total ^{14}C concentration ratios ranged from 0.72 (14.9%) to 0.84 (21.6%), which indicated non-preferential distribution of total ^{14}C to the cellular components of whole blood. There were no notable time-dependent differences in the geometric mean whole blood-to-plasma total ^{14}C concentration ratios (**Fig. 3B**).

Mass Balance and Excretion

Following a single oral dose of ^{14}C -AZD4831 10 mg (as a solution), an average of 83.6% of the ^{14}C administered was recovered by the end of the sampling period (336 hours) (**Table 3**). On average, 51.2% of the total ^{14}C was recovered from urine and 32.4% was recovered from feces. An overview of total ^{14}C concentrations in urine samples measured before and after extended extraction, involving additional volumes of MeCN before sample dilution (MeCN/urine 1/1, v/v) followed by extended extraction of the sample tubes (**Supplemental Information**), improved recovery in

the urine from approximately 37% to 51%, indicating that some binding to plastics had occurred. Within the first 24 hours post-dose, on average 17.9% and 5.0% of total ^{14}C was recovered in urine and feces, respectively (**Table S7**). The cumulative fractions of ^{14}C dose excreted as total ^{14}C in urine, feces, and total (urine and feces combined) are shown in **Fig. 4** and **Table S7**. A summary of total ^{14}C in urine and feces combined expressed as amount of ^{14}C (nmol equivalent) and fraction of dose is shown in **Table 3**. The excreted ^{14}C accounted for 71.8% of the dose excreted in urine and feces between 0–168 hours, and the residual ^{14}C excretion continued throughout the 336-hour collection period (**Table 3** and **Table S7**).

Metabolite Profiling and Identification

Representative UPLC chromatograms of pooled plasma (0–96 hours), pooled urine (0–336 hour), and pooled fecal extracts (0–336 hours) are presented in **Fig. 5**. Following oral administration of ^{14}C -AZD4831 10 mg (as a solution), structures of nine metabolites (M4, M5, M7, M9, M11, M12, M16, M17, and M20) were identified, while six metabolites or metabolite fractions (MX1–MX6) were detected but not characterized (Jurva et al., 2022).

Quantitative percent estimates of ^{14}C and dose are presented, and metabolite profiles in plasma, urine, and feces are shown in **Tables 4 and 5**, and in **Fig. 5**. Unchanged AZD4831 accounted for 32.0% and 6.0% of the dose excreted in urine and feces, respectively, whereas in a pooled plasma sample representing $\text{AUC}_{0-96\text{h}}$ which represents more than 90% of the total drug-related exposure, AZD4831

accounted for 6.1% of the total drug-related material (DRM), corresponding to 11.9 nmol Eq./L based on the total drug-related exposure of 197 nmol Eq./L.

The major metabolite of AZD4831 in human plasma was the N-carbamoyl glucuronide M7, accounting for 71.9% of total exposure of DRM in plasma. AZD4831 and six metabolites were all present at <7% of DRM each. AZD4831 was the major component in urine (32.0% of the dose based on single AMS chromatograms of a 0–336-hour pool). The N-acetyl metabolite (M9) was the most abundant characterized metabolite in urine, and accounted for 4.4% of the dose; the uncharacterized metabolite MX1 accounted for 6.3% of the dose. The amount of AZD4831 recovered in feces was 6.0% of the dose and metabolite M9 was the most abundant metabolite, accounting for 11.9% of the dose.

The structural characterization of metabolites of AZD4831 has been thoroughly studied and reported separately (Jurva et al., 2022). The structures of M5, M7, M9, M11 and M12 were confirmed by comparison with authentic standards. A proposed metabolite scheme for AZD4831 showing the characterized metabolites in humans only is presented in **Fig. 6**.

Safety

A total of 13 AEs were reported by six participants who received a single oral dose of ¹⁴C-AZD4831 10 mg (as a solution). All AEs were mild, none were considered related to ¹⁴C-AZD4831, and there were no serious AEs. Diarrhea was the most commonly reported AE (five times by three participants). There were no

clinically relevant findings in clinical laboratory evaluations, vital signs, electrocardiograms, or physical examinations.

In Vitro Phenotyping of UGTs Responsible for the Formation of Metabolite M7

The results of an in vitro study, using seven UGT isoforms scaled to predict the relative contribution of each isoform in human liver microsomes, indicated that AZD4831 is a substrate of the following UGT isoforms: 1A1, 1A3, 1A9, and 2B7, where 1A1 is the major enzyme contributing towards 96% of the total AZD4831 carbamoyl glucuronidation among the isoforms tested. AZD4831 was not a substrate of UGT isoforms 1A4, 1A6, and 2B15 (**Table 6** and **Fig. 7**). Glucuronide metabolites for the control substrates could be detected in all UGT isoforms, indicating that the test system was performing to expected standard. No other UGTs were examined as a large proportion of glucuronidation is explained through formation via UGT1A1 and to a lesser percent by UGT isoforms 1A3, 1A9, and 2B7. However, contribution from other UGT isoforms cannot be excluded.

In Vivo Pharmacokinetics of M7 in Rats

Metabolite M7 displayed moderate clearance and low volume of distribution, a relatively short $t_{1/2}$ of 0.5 hours, and only 0.6% oral bioavailability. Monitoring of AZD4831 in the same pharmacokinetic samples revealed that AZD4831 was detectable in the circulation following both intravenous and oral doses of M7. Exposure (AUC) of AZD4831 in rats was approximately 3-fold higher following oral versus intravenous dosing when dose-adjusted (AUC, 2.31 versus 0.73 h· μ mol/L, respectively). For the intravenous dose, the T_{max} for AZD4831 (~5 hours) was

substantially delayed compared with that for M7 (0.03 hours). For the oral dose (30 mg/kg), the observed AUC for AZD4831 was 66-times greater than that for M7 (13.9 vs 0.21 h· μ mol/L, respectively) (**Fig. S1**).

Discussion

The hADME study investigated the mass balance recovery, pharmacokinetics, and metabolism of AZD4831. In this small population of healthy volunteers, a single oral dose of 10 mg ^{14}C -AZD4831 given as a solution (14.8 kBq; 0.4 μCi) was well tolerated, consistent with previous studies (Gan et al., 2019; Nelander et al., 2021). The clinical study design allowed for sample collection over 336 hours to ensure complete recovery of the ^{14}C dose via excretion. Routes and rates of elimination and the pharmacokinetics of AZD4831 were characterized, as well as the extent of distribution of total ^{14}C into the blood. Samples were also collected for the purpose of metabolite profiling and the enzyme responsible for the formation of M7 was studied *in vitro*. Additionally, chiral analysis of human plasma samples from the MAD study (Nelander et al., 2021; Jurva et al., 2022) confirmed that conversion of AZD4831 to its *S*-enantiomer was not quantifiable in plasma samples as levels were below the LLOQ. Therefore, the use of traditional non-chiral analysis to generate concentrations of AZD4831 for the modelling of pharmacokinetic profiles was justified.

The absorption of AZD4831 was relatively fast and concentrations declined in a biphasic manner, as previously reported (Nelander et al., 2021). Results from both the plasma metabolite profiling and the plasma pharmacokinetics of unlabeled AZD4831 indicate that exposure due to AZD4831 is low compared with total DRM in circulation, accounting for only 4.4% of circulating plasma total radioactivity based on AUC_{inf} , and confirm that M7, the *N*-carbamoyl glucuronide metabolite of AZD4831, is the predominant circulating drug-related component in plasma, accounting for >70%

of total ^{14}C over the 0–96 hour plasma profile. Furthermore, the geometric mean whole blood-to-plasma total ^{14}C concentration ratios indicated non-preferential distribution of total ^{14}C to the cellular components of whole blood. However, it should be noted that in a separate in vitro study of parent drug and metabolites M7, M9, M11, and M12, the blood-to-plasma ratios ranged from 0.57–1.2 (unpublished observations).

The recovery of total ^{14}C following a single oral dose of ^{14}C -AZD4831 was 84% in excreta (urine and feces) over the 336-hour sampling period. Although a total recovery of >90% is “preferable” for human mass balance studies (U.S. Food & Drug Administration, 2022), a recovery of >80% of ^{14}C in humans is deemed acceptable according to the literature standard (Roffey et al., 2007; Penner et al., 2009; Coppola et al., 2019; Singh et al., 2022) for relevant clinical dose with low radiocarbon, if explained by biological factors. In our study, non-specific adsorption to the plastic collection containers and subsample tubes was clearly a factor that influenced the recovery of ^{14}C in the urine samples (as demonstrated by increased recovery after exhaustive extraction of the urine sample tubes) and at least partially contributed to the lower than 100% of total ^{14}C recovery. The improved recovery did not include any unaccounted ^{14}C lost prior to the exhaustive extraction of the urine sample tubes, and so recovery in urine can be assumed to be higher than 51.2%. Extended processing of plasma and fecal samples was not required due to, in our experience, the proteins and lipids in plasma and feces that prevent adsorption to plastic. Notably, it has been reported that compounds with a shorter total ^{14}C half-life (<50 hours) tend to achieve greater total recovery than compounds with a longer

half-life (Roffey et al., 2007). Indeed, the recovery rate of total ^{14}C was slow, with 13% of the dose being excreted during the second week of sample collection. These findings are consistent with the relatively high oral absorption and long plasma half-life reported for AZD4831 (Gan et al., 2019; Nelander et al., 2021).

The majority of total ^{14}C was recovered via urinary excretion (51.2%) and 32–44% of the dose was unchanged AZD4831 in urine; thus, the majority of total ^{14}C recovered in the urine was AZD4831. The range of 32–44% for the dose recovered as unchanged AZD4831 reflects the different modes of detection and limits of quantification from the two analytical methods used (i.e., a single AMS chromatogram of a 0–336-hour pool for metabolite profiling compared with unlabeled compound analysis of all individual urine samples by LC-MS/MS). The cumulative fraction of dose excreted in feces as total radioactivity was 32.4% during the total collection period of 336 hours post-dose. Only 9.7% of the dose recovered (as total radioactivity) was excreted in the first 48 hours post-dose, with the remainder excreted over 48–336 hours. As per the literature, mean overall transit time throughout the entire gastrointestinal tract was reported to be 30–40 hours, with upper and lower limits of normal of 70 and 14 hours, respectively (Rao et al., 2011; Castellino et al., 2013). Therefore, together with the low fecal recovery during the initial 48 hours and the small amount of unchanged AZD4831, this suggests that the majority of fecal recovery over the 336-hour interval is due to biliary elimination and not poor absorption of AZD4831. Therefore, based on excretion data, it can be concluded that renal clearance is the main route of elimination for AZD4831 and that orally administered AZD4831 is well absorbed. In addition, renal clearance of

AZD4831 was estimated to be 12.8 L/h, which is higher than the product of the unbound fraction in plasma (0.349) (Jurva et al., 2022) and the glomerular filtration rate (7.5 L/h: $7.5 \text{ L/h} \times 0.349 = 2.6 \text{ L/h}$) (Davies and Morris, 1993). Thus, this indicates that urinary excretion is not solely by glomerular filtration but also involves active tubular secretion of AZD4831.

Metabolism also contributes substantially to the elimination of AZD4831. In the clinical study, the biotransformation of AZD4831 involved modification primarily at the thiourea and primary amine moieties of the xanthine derivative, as observed for preclinical species (Jurva et al., 2022) with no human specific metabolites observed. Metabolite profiling shows that while AZD4831 was the primary drug-related component in excreta over 336 hours, N-acetylated AZD4831 (M9) was the most abundant metabolite, accounting for 4.36% and 11.9% of the dose in urine and feces, respectively. Intramolecular cyclization with sulfur elimination of AZD4831 is the most prominent phase I biotransformation reaction leading to metabolites M4 and M5, while M11 and M12 were relatively minor metabolites in human samples. N-carbamoyl acyl glucuronide conjugation (M7) and N-acetylation (M9) were the major phase II biotransformation reactions observed for AZD4831 in this clinical study while M16, M17, and M20 (desulfurized N-acetyl conjugate) were minor metabolites in human samples.

The finding that M7 is the predominant circulating metabolite of AZD4831 in human plasma contrasts with observations in mouse, rat, and dog. Exposure to M7 in preclinical toxicology studies nevertheless exceeded that observed in humans, ensuring adequate toxicological coverage of the metabolite as reported by Jurva et

al (Jurva et al., 2022). High plasma binding of M7 (>99.8%) in humans is likely to contribute to the low clearance of M7. Support for this hypothesis is found in the reported preclinical species with higher free fractions of M7, and the resulting half-lives of M7 and AZD4831 in these species are shorter. In addition, the circulation of M7 at high exposure with only low levels of M7 found in excreta in humans suggests hydrolysis of M7 to the parent compound and/or enterohepatic recycling into the systemic circulation before excretion, thereby contributing to the long half-life of AZD4831. When M7 was administered by oral and intravenous dosing to rats, circulating AZD4831 was observed, suggesting that M7 is hydrolyzed followed by reabsorption of AZD4831, and supporting the involvement of enterohepatic recycling in the disposition of AZD4831.

Results from the in vitro studies presented in this article indicate that among the isoforms tested, UGT1A1 is the primary enzyme involved in the formation of M7, although UGT1A3, UGT1A9, and UGT2B7 are also involved to a lesser extent, consistent with observations reported previously for a primary amine molecule (Gunduz et al., 2010). Given that UGTs are typically high-capacity enzymes with high K_m , drug-drug interactions with AZD4831 are expected to be low (Mackenzie et al., 2010). Additionally, with multiple enzymes involved in this metabolic pathway, even if co-administered drugs inhibit one UGT isoform, the pharmacokinetics of AZD4831 are unlikely to be affected, as described for other drugs, e.g., febuxostat (Mukoyoshi et al., 2008).

In conclusion, a ^{14}C -labeled microtracer approach coupled with analysis by sensitive AMS was successfully applied to study the disposition and mass balance

recovery of AZD4831 in humans and to expedite the clinical development of this new molecular entity. The elimination of AZD4831 is via metabolism and renal excretion. The recovery of ¹⁴C-AZD4831 and metabolites showed that a high fraction of AZD4831 is absorbed, and that renal elimination is the principal route of excretion. M7, the N-carbamoyl glucuronide metabolite of AZD4831, is the predominant circulating metabolite of AZD4831 in plasma. M7 is formed primarily via UGT1A1 and preclinical evidence shows that once eliminated in bile, M7 can undergo hydrolysis before being recirculated in the system. Alternatively, it can also be excreted as AZD4831 following hydrolysis. These findings support the further clinical development of AZD4831 as a potential treatment of HF and possibly other indications.

Acknowledgments

The authors thank the participants in this study and the personnel at Pharmaron, Quotient Sciences, and TNO who were involved in the conduct of this study. Medical writing support was provided by Shaun W. Foley, BSc (Hons), ISMPP CMPP™ and editorial support was provided by Sharmin Saleque, MSc, of Core Medica, London, UK, supported by AstraZeneca.

Authorship Contributions

Participated in research design: Gränfors, Amilon, Menakuru, Garkaviy, Weidolf, Gopaul.

Supply of radiolabeled drug substance: Bragg, Gränfors.

Conducted experiments: Menakuru, Sandinge, Yan, Andersson, Pelay-Gimeno, Vaes, de Ligt.

Oversaw clinical conduct of study: Menakuru.

Performed data analysis: Sandinge, Amilon, Yan, Heijer, Andersson, Jurva, Weidolf, Pelay-Gimeno, Vaes, de Ligt, Gopaul.

Wrote or contributed to the writing of the manuscript: Bhattacharya, Sandinge, Bragg, Heijer, Yan, Andersson, Jurva, Pelay-Gimeno, Vaes, de Ligt, Gränfors, Amilon, Lindstedt, Menakuru, Garkaviy, Weidolf, Gopaul.

Disclosures

C.B., A-S.S., J.Y., U.J., V.S.G., M.H., R.A.B., M.G., L.C.A., and P.G. are employees of AstraZeneca and may hold stock in the company. L.W., C.A., and E-L.L. are former employees of AstraZeneca and may hold stock in the company. M.P-G., W.H.J.V., and R.A.F.dL are employees of TNO. S.R.M. is an employee of Quotient Sciences.

References

- Agarwal MA, Fonarow GC, and Ziaeian B (2021) National Trends in Heart Failure Hospitalizations and Readmissions From 2010 to 2017. *JAMA Cardiol* **6**:952-956.
- Azad N and Lemay G (2014) Management of chronic heart failure in the older population. *J Geriatr Cardiol* **11**:329-337.
- Baldus S, Heeschen C, Meinertz T, Zeiher AM, Eiserich JP, Münzel T, Simoons ML, and Hamm CW (2003) Myeloperoxidase Serum Levels Predict Risk in Patients With Acute Coronary Syndromes. *Circulation* **108**:1440-1445.
- Beaumont C, Young GC, Cavalier T, and Young MA (2014) Human absorption, distribution, metabolism and excretion properties of drug molecules: a plethora of approaches. *British Journal of Clinical Pharmacology* **78**:1185-1200.
- Beumer JH, Garner RC, Cohen MB, Galbraith S, Duncan GF, Griffin T, Beijnen JH, and Schellens JH (2007) Human mass balance study of the novel anticancer agent ixabepilone using accelerator mass spectrometry. *Invest New Drugs* **25**:327-334.
- Brennan M-L, Penn MS, Van Lente F, Nambi V, Shishehbor MH, Aviles RJ, Goormastic M, Pepoy ML, McErlean ES, Topol EJ, Nissen SE, and Hazen SL

(2003) Prognostic Value of Myeloperoxidase in Patients with Chest Pain. *New England Journal of Medicine* **349**:1595-1604.

Busse D, Leandersson S, Amberntsson S, Darnell M, and Hilgendorf C (2020) Industrial Approach to Determine the Relative Contribution of Seven Major UGT Isoforms to Hepatic Glucuronidation. *J Pharm Sci* **109**:2309-2320.

Castellino S, Moss L, Wagner D, Borland J, Song I, Chen S, Lou Y, Min SS, Goljer I, Culp A, Piscitelli SC, and Savina PM (2013) Metabolism, excretion, and mass balance of the HIV-1 integrase inhibitor dolutegravir in humans. *Antimicrob Agents Chemother* **57**:3536-3546.

Combes RD, Berridge T, Connelly J, Eve MD, Garner RC, Toon S, and Wilcox P (2003) Early microdose drug studies in human volunteers can minimise animal testing: Proceedings of a workshop organised by Volunteers in Research and Testing. *Eur J Pharm Sci* **19**:1-11.

Coppola P, Andersson A, and Cole S (2019) The Importance of the Human Mass Balance Study in Regulatory Submissions. *CPT Pharmacometrics Syst Pharmacol* **8**:792-804.

Davies B and Morris T (1993) Physiological parameters in laboratory animals and humans. *Pharm Res* **10**:1093-1095.

Dunlay SM, Roger VL, and Redfield MM (2017) Epidemiology of heart failure with preserved ejection fraction. *Nat Rev Cardiol* **14**:591-602.

- Flach S, Croft M, Ding J, Budhram R, Pankratz T, Pennick M, Scarfe G, Troy S, and Getsy J (2016) Pharmacokinetics, absorption, and excretion of radiolabeled revexepride: a Phase I clinical trial using a microtracer and accelerator mass spectrometry-based approach. *Drug Des Devel Ther* **10**:3125-3132.
- Gan LM, Lagerstrom-Fermer M, Ericsson H, Nelander K, Lindstedt EL, Michaelsson E, Kjaer M, Heijer M, Whatling C, and Fuhr R (2019) Safety, tolerability, pharmacokinetics and effect on serum uric acid of the myeloperoxidase inhibitor AZD4831 in a randomized, placebo-controlled, phase I study in healthy volunteers. *Br J Clin Pharmacol* **85**:762-770.
- Gunduz M, Argikar UA, Baeschlin D, Ferreira S, Hosagrahara V, and Harriman S (2010) Identification of a novel N-carbamoyl glucuronide: in vitro, in vivo, and mechanistic studies. *Drug Metab Dispos* **38**:361-367.
- Gupta N, Zhang S, Pusalkar S, Plesescu M, Chowdhury S, Hanley MJ, Wang B, Xia C, Zhang X, Venkatakrisnan K, and Shepard DR (2018) A phase I study to assess the mass balance, excretion, and pharmacokinetics of [14C]-ixazomib, an oral proteasome inhibitor, in patients with advanced solid tumors. *Investigational New Drugs* **36**:407-415.
- Hamilton RA, Garnett WR, and Kline BJ (1981) Determination of mean valproic acid serum level by assay of a single pooled sample. *Clin Pharmacol Ther* **29**:408-413.

Holmberg AA, Weidolf L, Necander S, Bold P, Sidhu S, Pelay-Gimeno M, de Ligt RAF, Verheij ER, Jauhiainen A, Psallidas I, Wahlby Hamren U, and Prothon S (2022) Characterization of Clinical Absorption, Distribution, Metabolism, and Excretion and Pharmacokinetics of Velsecorat Using an Intravenous Microtracer Combined with an Inhaled Dose in Healthy Subjects. *Drug Metab Dispos* **50**:150-157.

Husaini BA, Mensah GA, Sawyer D, Cain VA, Samad Z, Hull PC, Levine RS, and Sampson UKA (2011) Race, sex, and age differences in heart failure-related hospitalizations in a southern state: implications for prevention. *Circ Heart Fail* **4**:161-169.

Inghardt T, Antonsson T, Ericsson C, Hovdal D, Johannesson P, Johansson C, Jurva U, Kajanus J, Kull B, Michaëlsson E, Pettersen A, Sjögren T, Sörensen H, Westerlund K, and Lindstedt E-L (2022) Discovery of AZD4831, a Mechanism-Based Irreversible Inhibitor of Myeloperoxidase, As a Potential Treatment for Heart Failure with Preserved Ejection Fraction. *Journal of Medicinal Chemistry*.

Jurva U, Weidolf L, Sandinge A-S, Leandersson C, Ekdahl A, Li X-Q, Antonsson T, Sundell J, Westerlund K, Amilon C, Inghardt T, and Gopaul VS (2022) Biotransformation of the Novel Myeloperoxidase Inhibitor AZD4831 in Preclinical Species and Humans. *Drug Metab Dispos*:Submitted.

Lam CSP, Voors AA, Shah SJ, Erlinge D, Saraste A, Pirazzi C, Grove EL, Barasa A, Schou M, Aziz A, Gustavsson A, Garkaviy P, Gan LM, Gabrielsen A, and Lund LH (2021) Myeloperoxidase inhibitor AZD4831 target engagement and safety in a phase 2a study in patients with heart failure with preserved ejection fraction (SATELLITE). *Eur Heart J* **23 (Suppl 2)**:129-130.

Lappin G and Garner RC (2003) Big physics, small doses: the use of AMS and PET in human microdosing of development drugs. *Nature Reviews Drug Discovery* **2**:233-240.

Mackenzie PI, Gardner-Stephen DA, and Miners JO (2010) 4.20 - UDP-Glucuronosyltransferases, in: *Comprehensive Toxicology (Second Edition)* (McQueen CA ed), pp 413-434, Elsevier.

McCullough PA, Philbin EF, Spertus JA, Kaatz S, Sandberg KR, and Weaver WD (2002) Confirmation of a heart failure epidemic: findings from the Resource Utilization Among Congestive Heart Failure (REACH) study. *Journal of the American College of Cardiology* **39**:60-69.

Mukoyoshi M, Nishimura S, Hoshide S, Umeda S, Kanou M, Taniguchi K, and Muroga H (2008) In vitro drug-drug interaction studies with febuxostat, a novel non-purine selective inhibitor of xanthine oxidase: plasma protein binding, identification of metabolic enzymes and cytochrome P450 inhibition. *Xenobiotica* **38**:496-510.

Nelander K, Lagerstrom-Fermer M, Amilon C, Michaelsson E, Heijer M, Kjaer M, Russell M, Han D, Lindstedt EL, Whatling C, Gan LM, and Ericsson H (2021) Early Clinical Experience With AZD4831, A Novel Myeloperoxidase Inhibitor, Developed for Patients With Heart Failure With Preserved Ejection Fraction. *Clin Transl Sci* **14**:812-819.

Oktaç AA and Shah SJ (2015) Diagnosis and management of heart failure with preserved ejection fraction: 10 key lessons. *Curr Cardiol Rev* **11**:42-52.

Penner N, Klunk LJ, and Prakash C (2009) Human radiolabeled mass balance studies: objectives, utilities and limitations. *Biopharmaceutics & Drug Disposition* **30**:185-203.

Podrez EA, Abu-Soud HM, and Hazen SL (2000) Myeloperoxidase-generated oxidants and atherosclerosis. *Free Radic Biol Med* **28**:1717-1725.

Rao SS, Camilleri M, Hasler WL, Maurer AH, Parkman HP, Saad R, Scott MS, Simren M, Soffer E, and Szarka L (2011) Evaluation of gastrointestinal transit in clinical practice: position paper of the American and European Neurogastroenterology and Motility Societies. *Neurogastroenterol Motil* **23**:8-23.

Roffel AF, van Marle SP, van Lier JJ, Hartstra J, and van Hoogdalem EJ (2016) An evaluation of human ADME and mass balance studies using regular or low doses of radiocarbon. *J Labelled Comp Radiopharm* **59**:619-626.

- Roffey SJ, Obach RS, Gedge JI, and Smith DA (2007) What is the objective of the mass balance study? A retrospective analysis of data in animal and human excretion studies employing radiolabeled drugs. *Drug Metab Rev* **39**:17-43.
- Singh RSP, Walker GS, Kadar EP, Cox LM, Eng H, Sharma R, Bergman AJ, Van Eyck L, Hackman F, Toussi SS, Kalgutkar AS, and Obach RS (2022) Metabolism and Excretion of Nirmatrelvir in Humans Using Quantitative Fluorine Nuclear Magnetic Resonance Spectroscopy: A Novel Approach for Accelerating Drug Development. *Clin Pharmacol Ther*.
- Spracklin DK, Chen D, Bergman AJ, Callegari E, and Obach RS (2020) Mini-Review: Comprehensive Drug Disposition Knowledge Generated in the Modern Human Radiolabeled ADME Study. *CPT Pharmacometrics Syst Pharmacol* **9**:428-434.
- Tang WH, Tong W, Troughton RW, Martin MG, Shrestha K, Borowski A, Jasper S, Hazen SL, and Klein AL (2007) Prognostic value and echocardiographic determinants of plasma myeloperoxidase levels in chronic heart failure. *J Am Coll Cardiol* **49**:2364-2370.
- U.S. Food & Drug Administration (2012) Drug Interaction Studies — Study Design, Data Analysis, Implications for Dosing, and Labeling Recommendations. Guidance for Industry.

- U.S. Food & Drug Administration (2020) In Vitro Drug Interaction Studies —
Cytochrome P450 Enzyme- and Transporter-Mediated Drug Interactions
Guidance for Industry.
- U.S. Food & Drug Administration (2022) Clinical Pharmacology Considerations for
Human Radiolabeled Mass Balance Studies Guidance for Industry.
- van Duijn E, Sandman H, Grossouw D, Mocking JA, Coulier L, and Vaes WH (2014)
Automated combustion accelerator mass spectrometry for the analysis of
biomedical samples in the low attomole range. *Anal Chem* **86**:7635-7641.
- Young GC, Spracklin DK, James AD, Hvenegaard MG, Scarfe G, Wagner DS,
Georgi K, Schieferstein H, Bjornsdottir I, van Groen B, Romeo AA, Cassidy
KC, Da-violante G, Bister B, Blech S, Iyer R, Schulz SI, Cuyckens F, and
Moliner P Considerations for Human ADME strategy and design paradigm
shift(s) - an Industry white paper. *Clinical Pharmacology & Therapeutics*:2022
Jun. doi: 2010.1002/cpt.2691. Epub ahead of print.
- Zhang R, Brennan M-L, Fu X, Aviles RJ, Pearce GL, Penn MS, Topol EJ, Sprecher
DL, and Hazen SL (2001) Association Between Myeloperoxidase Levels and
Risk of Coronary Artery Disease. *JAMA* **286**:2136-2142.

Footnotes

Funding

This study was funded by AstraZeneca.

Reprint request

V. Sashi Gopaul, Pepparedsleden 1, 431 50 Mölndal, Sweden. Telephone: +46

72 549 68 86. E-mail: sashi.gopaul@astrazeneca.com

Figure Captions

Fig. 1. Structure of ^{14}C -AZD4831 (an *R*-enantiomer) showing the position of the ^{14}C label

Fig. 2. Representative overlaid chromatograms showing the separation of AZD4831 from its *S*-enantiomer (3.1 nM and 6.2 nM) and metabolite M7 following chiral LC-MS/MS analysis of pooled plasma samples from the MAD clinical study (Nelander et al., 2021)

LC-MS/MS, liquid chromatography tandem mass spectrometry; MAD, multiple ascending dose; RT, retention time.

The high peak at RT 13.8 min between AZD4831 and the *S*-enantiomer is the metabolite M7.

Fig. 3. Geometric mean (geometric standard deviation) concentration versus time profiles of AZD4831 and total ^{14}C in (A) plasma and (B) whole blood following administration of a single oral dose of 10 mg of ^{14}C -AZD4831 (14.8 kBq, in solution) in healthy male volunteers

Fig. 4. Arithmetic mean (standard deviation) cumulative fraction of ^{14}C dose (%) excreted as total ^{14}C in urine, feces, and total (urine + feces) following administration of a single oral dose of 10 mg of ^{14}C -AZD4831 (14.8 kBq, as a solution) in healthy male volunteers

F_e , fraction of total ^{14}C excreted expressed as a percentage of the dose administered.

Fig. 5. Representative UPLC chromatograms showing metabolite profiles in plasma (0–96 h pool), urine (0–336 h pool), and feces (0–336 h pool) following administration of a single oral dose of 10 mg of ^{14}C -AZD4831 (14.8 kBq, as a solution) in healthy male volunteers

UPLC, ultra-performance liquid chromatography.

Fig. 6. Proposed metabolite scheme for ^{14}C -AZD4831 following administration of a single oral dose of 10 mg of ^{14}C -AZD4831 (14.8 kBq, as a solution) in healthy male volunteers

Shaded atoms indicate different possible sites of metabolism. The asterisk marks the position of the ^{14}C label in AZD4831.

Fig. 7. Summary of the percent contribution of individual UGT isoforms responsible for the formation of M7 following incubation with AZD4831 in recombinantly expressed UGTs

UGT, uridine diphosphate glucuronosyltransferase.

Tables

TABLE 1 LC-MS/MS plasma concentrations of AZD4831 and the S-enantiomer in human pooled plasma samples from the MAD study (Nelander et al., 2021; Jurva et al., 2022)

Timepoint of Pool (h)	Number of Participants Pooled	Dose (mg/kg)	AZD4831 Pooled Concentration (nmol/L)	S-enantiomer Pooled Concentration (nmol/L)
0.5	7	15	48.2	BLQ
1	7	15	94.8	BLQ
2	7	15	92.6	BLQ
3	7	15	83.7	BLQ
4	7	15	92.6	BLQ
6	7	15	63.1	BLQ
8	7	15	58.7	BLQ
12	7	15	44.9	BLQ
24	7	15	44.1	BLQ
0.5	8	10	26.8	BLQ
1	8	10	60.3	BLQ

2	8	10	50.0	BLQ
3	8	10	47.9	BLQ
4	8	10	47.0	BLQ
6	8	10	39.6	BLQ
8	8	10	35.3	BLQ
12	8	10	27.5	BLQ
24	8	10	35.1	BLQ
AUC _{0-24h} pool	8	5	18.5	BLQ
AUC _{0-24h} pool	8	10	34.6	BLQ
AUC _{0-24h} pool	7	15	53.0	BLQ

AUC, area under the plasma concentration-time curve; BLQ, below the lower limit of quantification (3.89 nmol/L);

LC-MS/MS, liquid chromatography tandem mass spectrometry; MAD, multiple ascending dose.

TABLE 2 Geometric mean (geometric %CV) plasma and whole blood pharmacokinetic parameters following a single dose of 10 mg of ¹⁴C-AZD4831 (14.8 kBq, as a solution) in healthy male volunteers

Analyte	AZD4831	Total ¹⁴ C	
	Plasma	Plasma	Whole Blood
	N = 6	N = 6	N = 6
AUC _{inf} (nmol.h/L) ^a	1050 (9.2) [n = 5]	24,100 (13.5)	17,300 (39.9) [n = 4]
AUC _{last} (nmol.h/L) ^a	839 (12.4)	23,100 (13.1)	15,000 (31.8)
C _{max} (nmol/L) ^a	32.0 (39.7)	266 (7.0)	203 (9.4)
T _{max} (hours) ^b	1.00 (0.50–6.08)	4.50 (3.00–8.00)	5.00 (3.00–8.00)
t _{1/2λz} (hours)	52.3 (28.1)	73.5 (11.6)	67.9 (32.7)
CL/F (L/hour)	28.2 (9.1) [n = 5]	NC	NC
CL _R (L/hour)	12.8 (16.7)	NC	NC
V _z /F (L)	2050 (21.6) [n = 5]	NC	NC

AUC, area under the plasma concentration-time curve; AUC_{inf}, AUC from dosing extrapolated to infinity; AUC_{last}, AUC from dosing to last measurable concentration; CL/F, apparent total body clearance of drug from plasma; CL_R, renal clearance of drug from plasma; C_{max}, maximum observed plasma concentration; CV, coefficient of variation; N, number of participants dosed; n, number of participants included in analysis; NC, not calculated; t_{1/2λz}, half-life associated with the terminal slope of a semi-logarithmic concentration-time-curve; T_{max}, time at maximum plasma concentration; V_z/F, apparent volume of distribution.

^aWhole blood pharmacokinetic parameters derived based on reduced sampling schedule.

^bMedian (range).

TABLE 3 Summary of total ^{14}C in urine and feces combined (nmol equivalent), and fraction of dose excreted as total ^{14}C in urine and feces combined, following administration of a single oral dose of 10 mg of ^{14}C -AZD4831 (14.8 kBq, as a solution) in healthy male volunteers

10 mg ^{14}C-AZD4831 (N = 6)		Mean	SD	%CV	Min	Median	Max
0–24 hours	A _e (T)	6750	1810	26.8	5040	6550	9720
	F _e (T)	22.940	6.164	26.9	17.10	22.257	33.05
24–48 hours	A _e (T)	4680	2080	44.6	2080	4340	7930
	F _e (T)	15.887	7.077	44.5	7.07	14.752	26.93
48–72 hours	A _e (T)	3330	1240	37.2	2290	3040	5690
	F _e (T)	11.320	4.216	37.2	7.77	10.307	19.34
72–96 hours	A _e (T)	2220	718	32.4	1260	2320	3230
	F _e (T)	7.525	2.440	32.4	4.26	7.887	10.96
96–120 hours	A _e (T)	1590	881	55.3	879	1370	3270
	F _e (T)	5.406	2.988	55.3	2.99	4.667	11.09
120–144 hours	A _e (T)	1530	881	57.5	703	1320	3200
	F _e (T)	5.207	2.990	57.4	2.39	4.482	10.86
144–168 hours	A _e (T)	1040	783	75.1	340	709	2390
	F _e (T)	3.540	2.657	75.0	1.16	2.410	8.11
168–192 hours	A _e (T)	1030	382	37.3	551	1090	1470
	F _e (T)	3.485	1.298	37.2	1.87	3.698	4.97

192–216 hours	A _e (T)	658	325	49.4	343	579	1260
	F _e (T)	2.234	1.102	49.3	1.16	1.968	4.26
216–240 hours	A _e (T)	442	170	38.5	266	407	750
	F _e (T)	1.502	0.579	38.6	0.90	1.382	2.55
240–264 hours	A _e (T)	471	174	37.0	310	433	775
	F _e (T)	1.598	0.591	37.0	1.05	1.470	2.63
264–288 hours	A _e (T)	338	98.9	29.3	216	338	481
	F _e (T)	1.148	0.335	29.2	0.73	1.147	1.63
288–312 hours	A _e (T)	294	145	49.4	140	265	537
	F _e (T)	0.998	0.493	49.3	0.48	0.899	1.82
312–336 hours	A _e (T)	228	122	53.4	111	200	466
	F _e (T)	0.775	0.414	53.4	0.38	0.681	1.58
0–336 hours	Cum(A _e) (T)	24,600	1560	6.3	22,700	24,600	26,500
	Cum(F _e) (T)	83.565	5.289	6.3	77.08	83.7	90.09

A_e, amount of total ¹⁴C excreted; Cum(A_e), cumulative amount of total ¹⁴C excreted; Cum(F_e), cumulative fraction of total ¹⁴C excreted expressed as a percentage of the dose administered; CV, coefficient of variation; F_e, fraction of total ¹⁴C excreted expressed as a percentage of the dose administered; SD, standard deviation; T, total.

Data are arithmetic. Unit for A_e is nmol equivalent.

TABLE 4 Exposure to AZD4831 and metabolites identified in plasma (AUC pool 0–96 hours) following administration of a single oral dose of 10 mg of ¹⁴C-AZD4831 (14.8 kBq, as a solution) in healthy male volunteers

Compound (Biotransformation Reaction)	LC-MS/AMS RT (minutes)	Relative Amount (%) of Drug-Related Exposure	Concentration (nmol Eq./L)^b
M16 (sulfur elimination and N-carbamoyl glucuronidation)	9.92	3.08	6.07
AZD4831	10.1	6.05	11.9
M17 (oxidation of M7)	13.4	5.32	10.5
M5 (intramolecular cyclization with desulfurization)	14.8	0.72	1.4
M7 (carbamoyl glucuronidation of primary amine)	16.9	71.9	141
M9 (N-acetylation of primary amine)	19.8	6.13	12.1
M11 (oxidative deamination of primary amine and reduction of ketone to alcohol)	20.3	2.93	5.77
M12 ^a (intramolecular cyclization)	20.9	<0.5	<1.0

AMS, accelerator mass spectrometry; AUC, area under the plasma concentration-time curve; LC-MS, liquid chromatography-mass spectrometry; RT, retention time.

^aOnly detected by MS.

^bBased on relative amount and total ¹⁴C concentration corresponding to 197 nmol Eq./L.

TABLE 5 Quantitative estimates of AZD4831 and identified metabolites in urine and feces (both pooled 0–336 h) (% of dose) following administration of a single oral dose of 10 mg of ¹⁴C-AZD4831 (14.8 kBq, as a solution) in healthy male volunteers

Compound (Biotransformation Reaction)	LC-MS/AMS RT (minutes)	% of Dose in Urine	% of Dose in Feces
MX1	3.92	6.25	0.732
MX2	5.25	1.00	ND
AZD4831	10.1 ^a /9.42 ^b	32.0	5.96
M20 (desulfurization and N-acetylation of primary amine)	12.6	ND	2.65
M4 (intramolecular cyclization with desulfurization and hydroxylation)	13.1	0.456	ND
M5 (intramolecular cyclization with desulfurization)	14.3	1.44	2.49
MX3	16.4	ND	0.480
MX4	17.1	ND	0.457
M7 (carbamoyl glucuronidation of primary amine)	17.1	1.77	ND
MX5	18.8	ND	0.330
M9 (N-acetylation of primary amine)	19.9 ^a /19.4 ^b	4.36	11.9
M11(oxidative deamination of primary amine and reduction of ketone to alcohol)	19.9	ND	0.972
M12 (intramolecular cyclization)	20.4	ND	0.366
MX6	23.8	ND	1.71

AMS, accelerator mass spectrometry; LC-MS, liquid chromatography-mass spectrometry; ND, not detected; RT, retention time.

^aIn urine.

^bIn feces.

TABLE 6 Summary of the percent contribution of individual UGT isoforms responsible for the formation of M7 following incubation with AZD4831 in recombinantly expressed UGTs

Isoform	Control Substrate	Relative Contribution (%) Amongst the Seven Tested UGT Isoforms to the Formation of M7
UGT1A1	β -estradiol	96
UGT1A3	4-methyl umbelliferone	0.64
UGT1A4	Lamotrigine	NC ^a
UGT1A6	1-naphthol	NC ^a
UGT1A9	Propofol	1.3
UGT2B7	Zidovudine	2.3
UGT2B15	Oxazepam	NC ^a

NC, not calculated; UGT, UDP-glucuronosyltransferase.

^aBelow limit of detection with signal to noise ratio <3.

Fig. 1

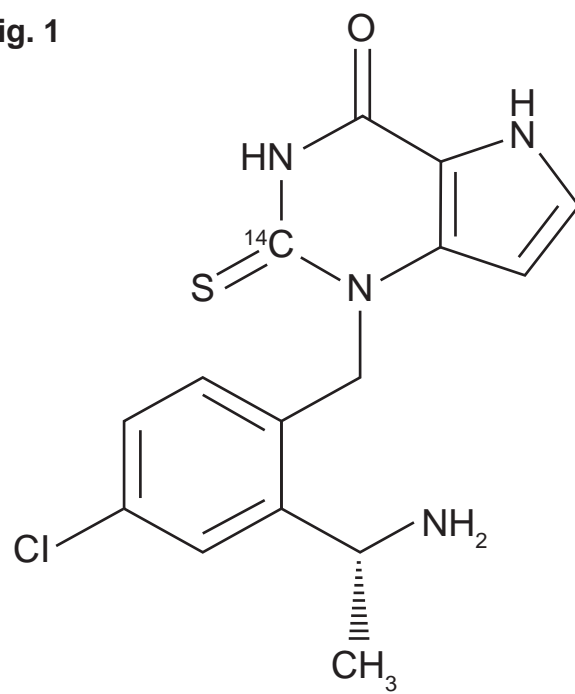


Fig. 2

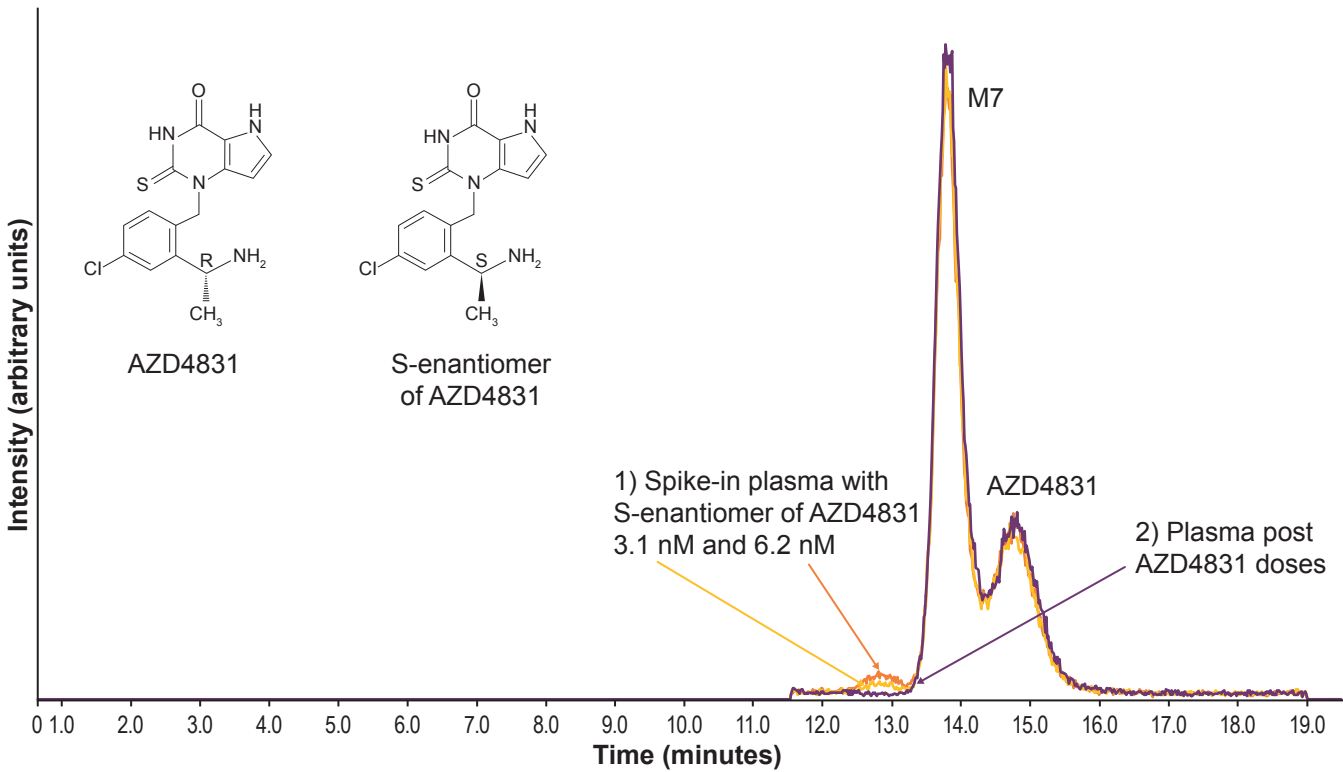
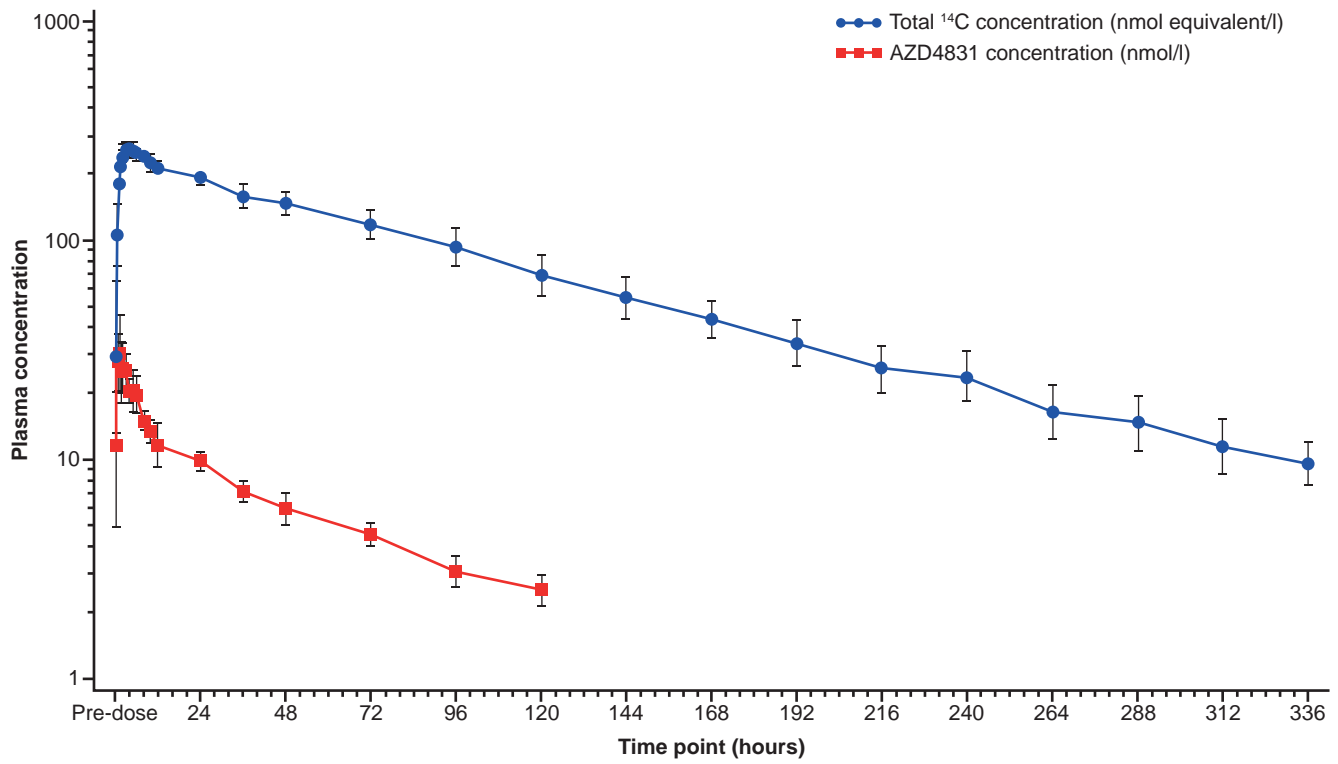


Fig. 3

(A)



(B)

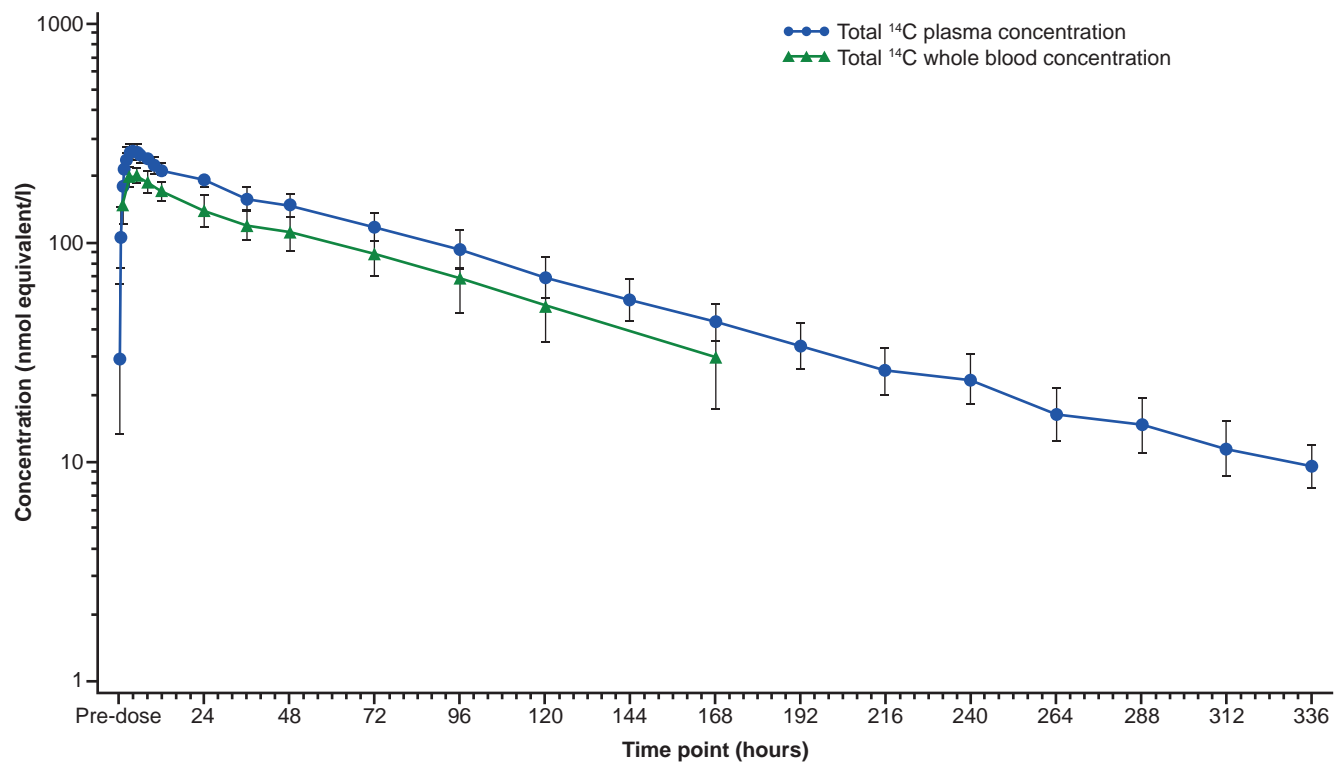


Fig. 4

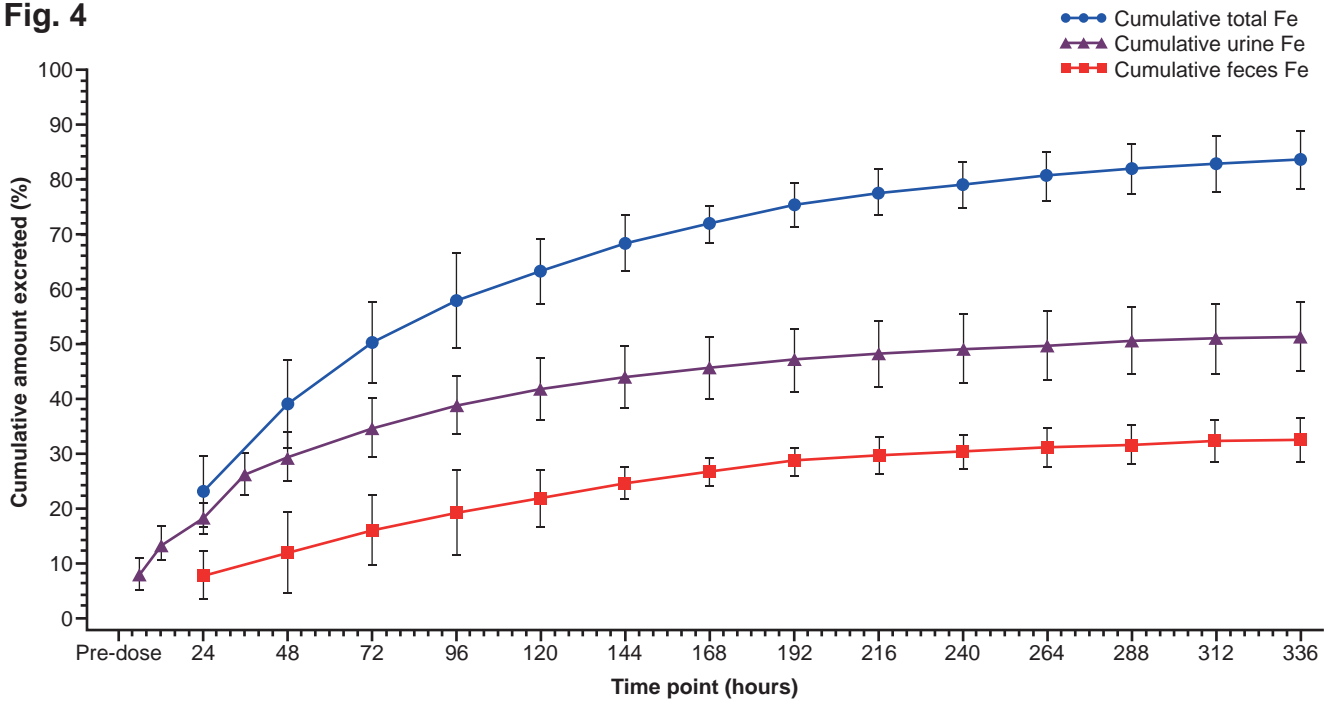


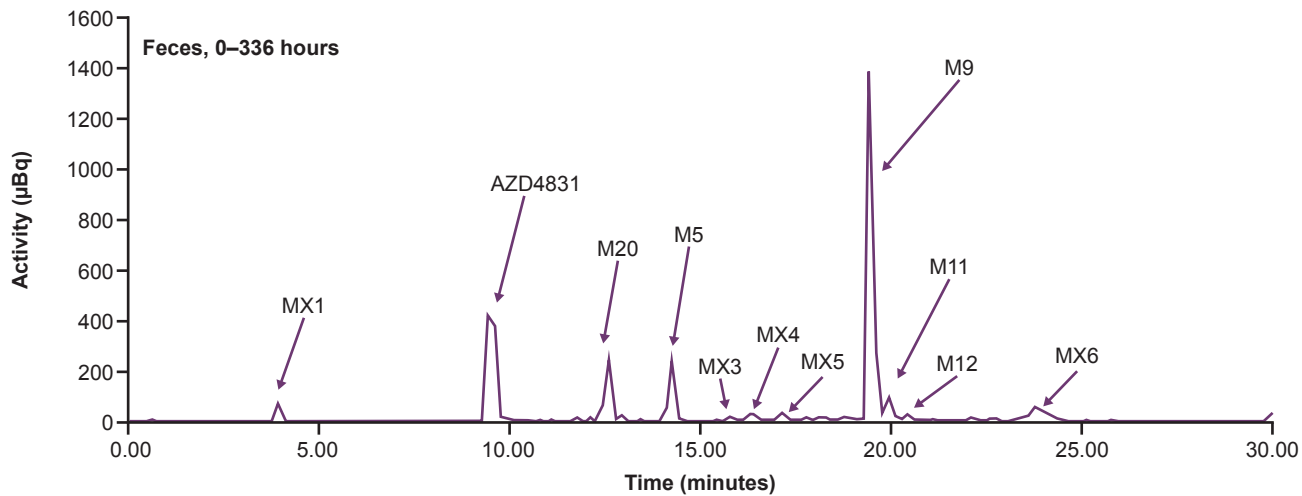
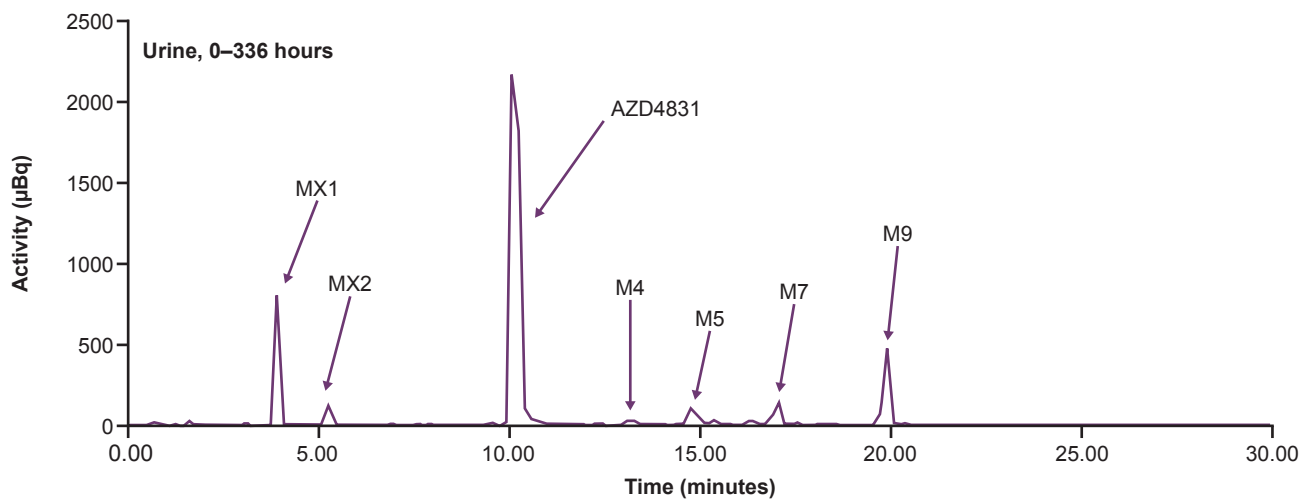
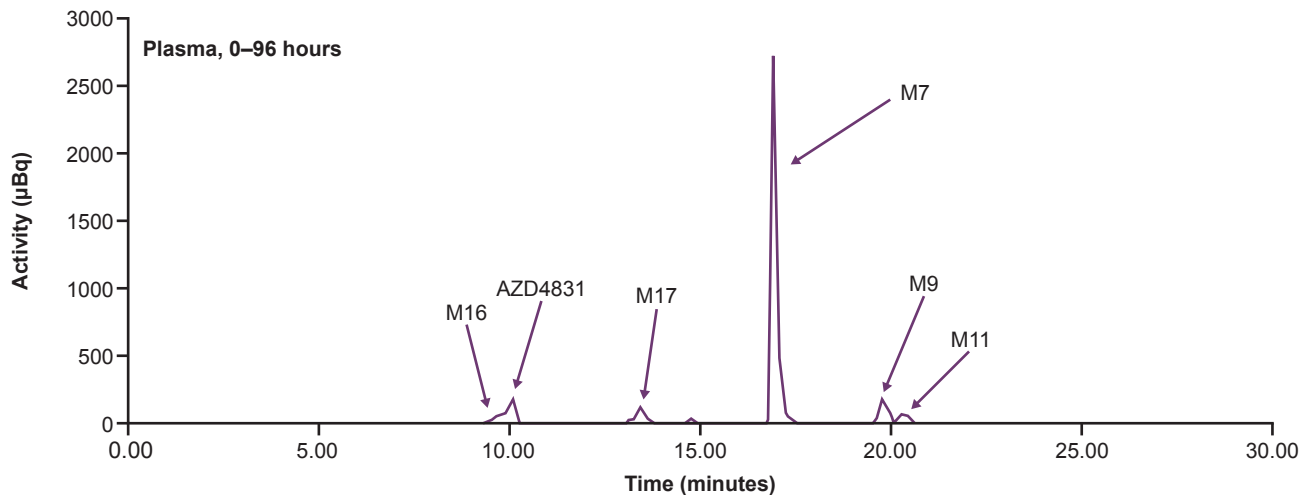
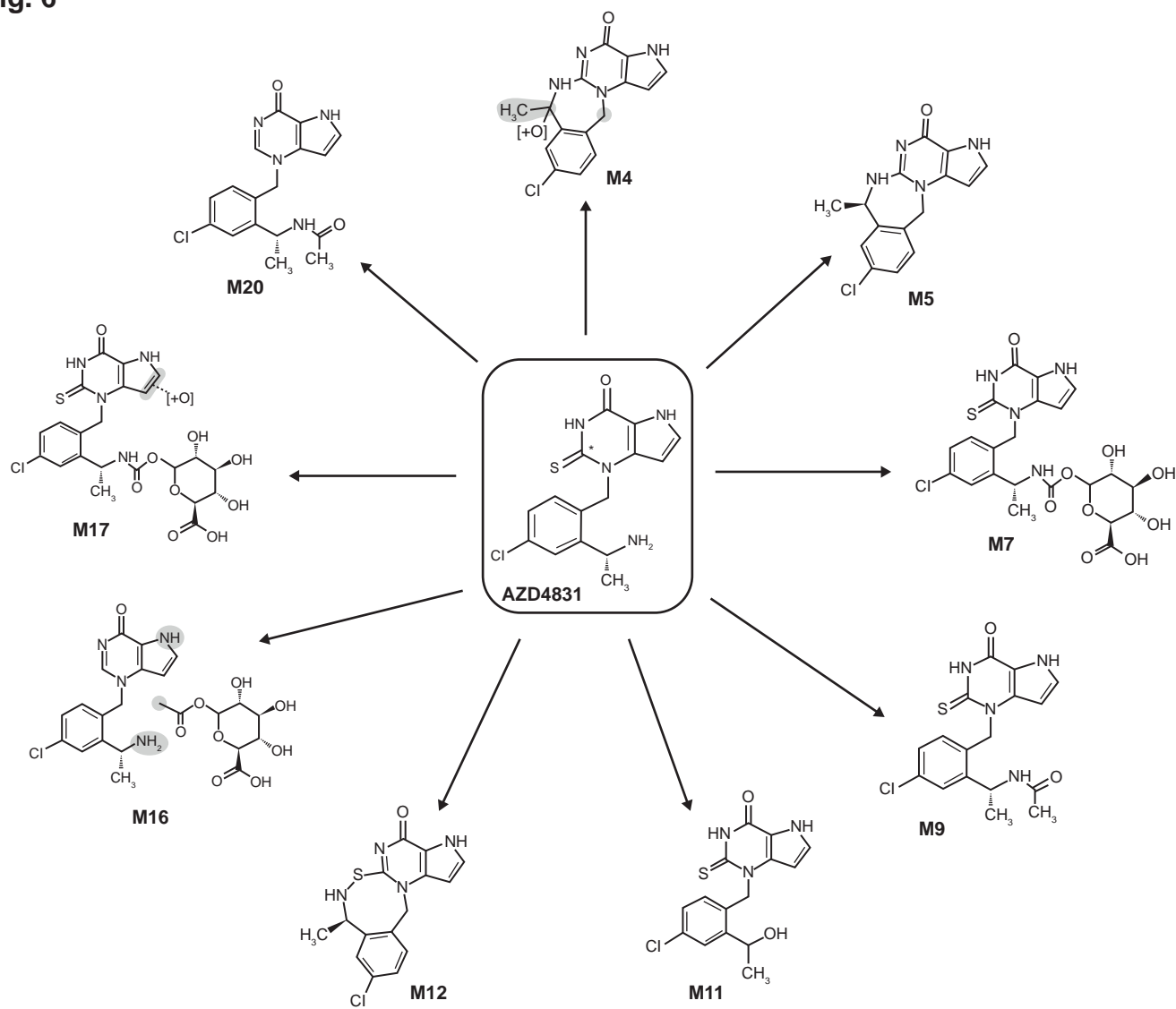
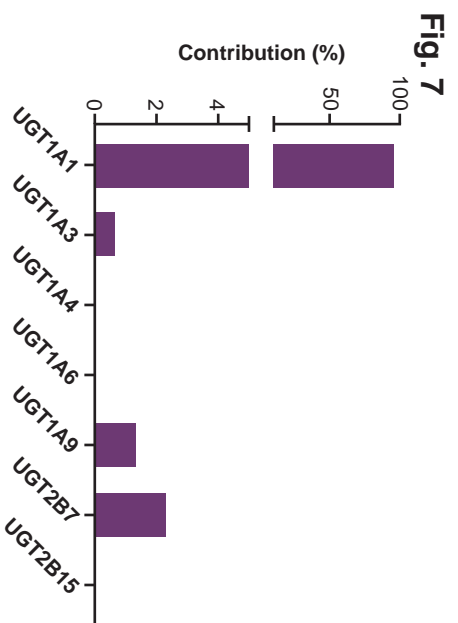
Fig. 5

Fig. 6





Supplemental Information

Application of Accelerator Mass Spectrometry to Characterize the Mass Balance Recovery and Disposition of AZD4831, a Novel Myeloperoxidase Inhibitor, Following Administration of an Oral Radiolabeled Microtracer Dose in Humans

**Chandrali Bhattacharya, Ann-Sofie Sandinge, Ryan A. Bragg, Maria Heijer,
Jingjing Yan, Linda C. Andersson, Ulrik Jurva, Marta Pelay-Gimeno, Wouter H.
J. Vaes, Rianne A. F. de Ligt, Malin Gränfors, Carl Amilon, Eva-Lotte Lindstedt,
Somasekhara R. Menakuru, Pavlo Garkaviy, Lars Weidolf, V. Sashi Gopaul**

Supplemental Materials and Methods

Determination of total ¹⁴C-concentrations in urine – extended sample processing

To maximize the extraction of ¹⁴C from urine, the samples that were collected and stored in plastic tubes were transferred to glass tubes containing 1.5 mL of acetonitrile (MeCN). The original plastic storage sample tubes were sequentially extracted with 3 mL each of MeCN, methanol, 1 M aqueous hydrogen chloride, and 1 M aqueous sodium hydroxide. All extracts were added to the corresponding glass tube containing the urine sample in 1.5 mL of MeCN.

An aliquot of the combined extracts was analyzed using accelerator mass spectrometry (AMS) analysis. To generate a suitable current on the AMS, a fixed amount of ¹²C was added to the cups prior to drying and AMS analysis. A quality control (QC) urine sample with a known amount of ¹⁴C (derived from a ¹⁴C-paracetamol solution [Hartmann Analytic, Braunschweig, Germany] diluted in urine to 195 mBq/mL) was analyzed with the study samples using the same procedure as previously described. The deviation from the nominal concentration in the extracted QC samples and the coefficient of variation were <5%; thus, the extended procedure was suitable to determine the ¹⁴C levels in the extracted urine samples.

LC-MS/MS method for the investigation of racemization in the plasma samples from human subjects dosed with AZD4831

The objective of the configurational stability study was to quantitatively evaluate the potential for racemization of AZD4831 to its corresponding S-enantiomer and assess its impact on drug metabolism and pharmacokinetic analysis of AZD4831. Samples from humans following oral administration of AZD4831 during the multiple ascending dose (MAD) study (Nelander et al., 2021; Jurva et al., 2022) were assessed using a chiral liquid chromatography tandem mass spectrometry (LC-MS/MS) assay.

Synthesis of standards

The synthesis of the S-enantiomer of AZD4831 is described elsewhere (Inghardt et al., 2022). The synthesis of the stable labeled internal standard $^{13}\text{C}_3$, $^{15}\text{N}_2$ -AZD4831 was performed at Pharmaron Beijing Co., Ltd (Beijing, China).

Calibration standards

Stock solutions of AZD4831 (*R*-enantiomer), the *S*-enantiomer, and internal standard $^{13}\text{C}_3$, $^{15}\text{N}_2$ -AZD4831 were prepared in dimethyl sulfoxide (Sigma-Aldrich, St. Louis, MO, USA), and diluted appropriately to prepare calibration samples for AZD4831 and the *S*-enantiomer in human plasma on the day of analysis. The following calibration standards were prepared: 124.5, 62.0, 31.1, 15.6, 7.78, 3.89, 1.95, and 0.973 nM. QC samples were prepared by spiking a mixture of AZD4831 and the *S*-enantiomer in blank human plasma for a final concentration of 124.5 nM for

AZD4831 and 6.225 nM (5% of AZD4831) for the *S*-enantiomer. Calibration standards, QC samples, and plasma samples, including blanks, were processed by protein precipitation. This was achieved by mixing 50 μL of sample with 165 μL of MeCN containing 15 μL of 168 nM of $^{13}\text{C}_3$, $^{15}\text{N}_2$ -AZD4831 as internal standard. Samples were vortex mixed and centrifuged to separate the organic layer, and then 150 μL was analyzed by LC-MS/MS.

Liquid chromatography

The analytes were separated with high-performance liquid chromatography (HPLC) on a Waters HPLC Aquity System (Waters Corp., Milford, MA, USA) using a CROWNPAK CR-1(+) column (150 \times 3.0 mm, 5 μm , Chiral Technologies, Illkirch, France) kept at 25°C. Chromatographic separation was achieved using a mobile phase consisting of MeCN/H₂O/trifluoroacetic acid in a ratio of 96/4/0.5 at a constant flow rate kept at 0.15 mL/min. A C18 pre-column (Phenomenex, AJ0-9298, SecurityGuard™ ULTRA cartridges for EV0-C18 UHPLC, sub-2 μm and core-shell columns with 2.1 mm internal diameters) was applied before the chiral column. Autosampler temperature was kept at 12°C.

Mass spectrometry

Analytes were detected in positive ionization mode using a Waters Xevo-TQS triple quadrupole mass spectrometer (Waters Corp., Milford, MA, USA) with the following source parameters set: desolvation temperature at 500°C; cone gas flow at 150 L/hr; nebulizer gas flow at 7 bar, and capillary voltage at 0.76 kv. The selected multiple

reaction monitoring transitions for AZD4831 and S-enantiomer of AZD4831 were: m/z 334.89 > 150.98; 335.34 > 317.92, and those for the internal standard $^{13}\text{C}_3$, $^{15}\text{N}_2$ -AZD4831 were: m/z 340.02 > 150.99.

Data analysis

The enantiomeric separation and quantitation were performed in four batches on four different days. The range of standard curve for the R-enantiomer AZD4831 and S-enantiomer in human plasma were both 0.00389–0.1245 $\mu\text{mol/L}$. Data acquisition was performed with MassLynx V4.2 SCN986 software and data analysis was performed with TargetLynx XS V4.2 SCN986 software. The analytical run acceptance criteria for calibration standards was: 75% or better of back-calculated concentrations should be within $\pm 20\%$ ($\pm 25\%$ at lower limit of quantification) of nominal values. The performance of the assay was assessed from the variability observed in the calibration curves as well as the accuracy of QCs. The acceptance criteria for QCs were: $\geq 67\%$ of QCs should be $\pm 20\%$ of nominal value.

LC-MS method for in vitro phenotyping of UGT isoforms responsible for the formation of metabolite M7

The objective of the in vitro uridine diphosphate glucuronosyltransferase (UGT) phenotyping study was to identify whether AZD4831 is a substrate of any of the following human hepatic UGTs and, if so, estimate the relative contribution of each isoform: UGT1A1, UGT1A3, UGT1A4, UGT1A6, UGT1A9, UGT2B7, and UGT2B15.

Chromatography

The chromatographic method was performed on a BEH C18 1.7 μm , 2.1 \times 50 mm column heated to 40°C. The mobile phase was a mixture of solvent A (0.1% formic acid in water) and solvent B (100% MeCN). The gradient started with 5% of solvent B and was increased to 90% solvent B in 3 minutes. Afterwards, the gradient was instantaneously increased to 98% solvent B where it was kept until 4 minutes. The flow rate was set to 0.7 mL/min and the injection volume was 8 μL . The system was equilibrated for 0.5 minutes, with the mobile phase containing 5% solvent B before the next injection.

Mass spectrometry

Quadruple time-of-flight (QTOF) analysis was performed on an Acquity UPLC Xevo G2-S QTOF instrument (Waters Corp., Milford, MA, US) equipped with an Acquity UPLC I-Class (Waters Corp., Milford, MA, US) system and an electrospray ionization source. The system was run in sensitivity mode with a cone voltage of 20 V, capillary voltage of 0.5 kV, source temperature of 120°C, and desolvation temperature of 600°C. Mass accuracy was corrected using a lock mass solution, leucine-enkephalin (m/z 556.2771), 200 pg/mL in MeCN : water (50:50 v/v) containing 0.1% formic acid. Full scan (m/z range 80–1200) centroid mass spectrometric data were acquired using a fixed collision energy of 4 eV. The molecular ion of M7 at m/z 553.0801 (M-H^-) and that of the internal standard 5,5-diethyl-1,3-diphenyl-2-iminobarbituric acid at m/z 334.1561 (M-H^-) were monitored. The monitored molecular ions of the control substrates are shown in **Table 3**. Data acquisition was performed with MS software

MassLynx 4.1 (Waters Corp, Milford, MA, US) and data analysis was performed using the QuanLynx module of the MassLynx 4.1 software.

Supplemental Tables

Table S1. Analytical equipment used in the hADME study (NCT04407091)

Equipment	Model and Vendor
AMS	1 MV multi-element AMS, model 4110 Bo, software versions for AMS01 B7679-2.0.0.79, for AMS02 B9188-2.0.0.614 (High Voltage Engineering, Amersfoort, Netherlands)
Mass spectrometer	Q Exactive orbitrap HRMS, Software: Xcalibur v2.2 sp1.48 (Thermo Fisher Scientific, Waltham, MA, USA) Waters Xevo-TQS triple quadrupole mass spectrometer (Waters Corp., Milford, MA, USA)
UPLC/HPLC	Aquity UPLC H Class Plus System (Waters Corp., Milford, MA, USA) Waters HPLC Aquity System (Waters Corp., Milford, MA, USA)
HPLC/Guard column	Aquity HSS T3 1.8 μ M, 100 \times 2.1 mm/VanGuard HSS Pre-Column T3 1.8 μ M, 5 \times 2.1 mm (Waters Corp., Milford, MA, USA) CROWNPAK CR-1(+) column, 150 \times 3.0 mm, 5 μ m (Chiral Technologies, Illkirch, France)
Fraction collector	Waters Fraction manager (WFM-A; Waters Corp., Milford, MA, USA) Split ratio was approximately 58% to the fraction collector and approximately 42% to HRMS

AMS, accelerator mass spectrometry; hADME, human absorption, distribution, metabolism, and excretion; HPLC, high-performance liquid chromatography; HRMS, high-resolution mass spectrometry; UPLC, ultra-performance liquid chromatography.

Table S2. Key inclusion and exclusion criteria for participants in the hADME study (NCT04407091)

Inclusion criteria
Signed informed consent
Healthy male participants aged 18–65 years, with suitable veins for cannulation or repeated venepuncture
Body mass index of 18.0–30.0 kg/m ² at screening
Regular bowel movements (i.e., average stool production of ≥1 and ≤3 stools per day)
Exclusion criteria
History of presence of gastrointestinal, hepatic, or renal disease, or any other condition known to interfere with absorption, distribution, metabolism, or excretion of drugs; uncontrolled or clinically significant thyroid disease; clinically significant illness, medical/surgery procedure, or trauma within 4 weeks
Clinically significant abnormalities in laboratory parameters, vital signs, electrocardiogram, or positive result on screening for serum hepatitis B surface antigen, hepatitis C virus antibody, and human immunodeficiency virus antibody
Current smoker or ex-smoker within 3 months, or current user or ex-user of e-cigarettes within 3 months; known or suspected history of alcohol or drug abuse or excessive intake of alcohol
Use of drugs or supplements with enzyme-inducing properties, such as St John’s Wort, within 3 weeks
Use of any prescribed or non-prescribed medication, including antacids, analgesics (other than paracetamol/acetaminophen), herbal remedies, megadose vitamins and minerals, within 2 weeks or longer if the medication has a long half-life
Participants with pregnant or lactating partners
Radiation exposure, including from the present study, excluding background radiation but including diagnostic x-rays and other medical exposures, exceeding 5 mSv in the previous 12 months or 10 mSv in the last 5 years
Evidence of renal impairment at screening (estimated creatinine clearance of <80 mL/min)

hADME, human absorption, distribution, metabolism, and excretion.

Table S3. Analytical conditions for metabolite profiling in the hADME study (NCT04407091)

Instrument	Equipment Details	Analytical Conditions		
UPLC for metabolite profiling/identification	Column temperature: 45°C Flow rate: 0.5 mL/min MPA: 0.1% formic acid in MilliQ water MPB: MeCN ULC/MS-CC/SFC grade Run time: 33 minutes Split ratio between HRMS and fraction collector: approximately 58% to the fraction collector and approximately 42% to HRMS	Time (minutes)	MPA (%)	MPB (%)
		0	95.0	5.0
		1.00	95.0	5.0
		13.00	83.0	17.0
		22.00	63.0	37.0
		23.00	10.0	90.0
		28.00	10.0	90.0
		28.10	95.0	5.0
		33.00	95.0	5.0
Mass spectrometer	Thermo Q Exactive, software Xcalibur v2.2 sp1.48	ESI +ve & -ve mode; calibrated within 3 ppm using calibration mixtures recommended by Thermo Fisher Scientific; Full MS PRM mode and Full MS ddMS ² <i>[MS analysis based on quantification and characterization of metabolites of velsecorat (Holmberg et al., 2022)]</i>		

CC, convergence chromatography; ddMS², data-dependent MS²; ESI, electrospray ionization; hADME, human absorption, distribution, metabolism, and excretion; HRMS, high-resolution mass spectrometry; MeCN, acetonitrile; MPA, mobile phase A; MPB, mobile phase B; MS, mass spectrometry; PRM, parallel reaction monitoring; SFC, supercritical fluid chromatography; ULC, ultra-liquid chromatography; UPLC, ultra-performance liquid chromatography.

Table S4. Summary of control substrates and metabolites used for the in vitro determination of UGT isoform involved in glucuronide metabolite formation

Isoform	Substrate	Substrate Concentration (μM)	Metabolite Monitored	Monitored Metabolite Ion (m/z) Analyzed by QTOF
UGT1A1	β -estradiol	5	β -estradiol 17- β -D-glucuronide	447.2019 (M-H) ⁻
UGT1A3	4-methyl umbelliferone	50	4-methylumbelliferone- β -d-glucuronide	351.0716 (M-H) ⁻
UGT1A4	Lamotrigine	200	Lamotrigine N-2-glucuronide	432.0477 (M+H) ⁺
UGT1A6	1-naphthol	2.5	1-naphthol O-glucuronide	319.0818 (M-H) ⁻
UGT1A9	Propofol	25	Propofol β -D-glucuronide	353.1601 (M-H) ⁻
UGT2B7	Zidovudine	150	3'-azido-3'-deoxythymidine β -D-glucuronide	442.1210 (M-H) ⁻
UGT2B15	Oxazepam	50	Oxazepam glucuronide	461.0752 (M-H) ⁻

QTOF, quadrupole time of flight; UGT, UDP-glucuronosyltransferase.

Table S5. Summary of substrates and metabolites used for the RAFs previously determined by Busse et al. (Busse et al., 2020)

Isoform	Substrate	Metabolite	RAF
UGT1A1	β -Estradiol	β -Estradiol 17- β -D-glucuronide	1.1
UGT1A3	CDCA	CDCA 24-Acyl- β -D-glucuronide	0.060
UGT1A4	Midazolam	Midazolam N- β -D-glucuronide	0.48
UGT1A6	Serotonin	Serotonin β -D-glucuronide	4.8
UGT1A9	Propofol	Propofol β -D-glucuronide	0.24
UGT2B7	Zidovudine	3'-Azido-3'-deoxythymidine β -D-glucuronide	1.1
UGT2B15	S-Oxazepam	Oxazepam glucuronide	6.5

CDCA, chenodeoxycholic acid; RAF, relative activity factor.

Table S6. Demographics and baseline characteristics of healthy participants in hADME study (NCT04407091)

Characteristic	Statistic	Participants (N = 6)
Age, years	Mean	31.0
	SD	7.2
	Median	32.0
	Min	22
	Max	39
Height, cm	Mean	174.7
	SD	3.8
	Median	174.5
	Min	170
	Max	179
Weight, kg	Mean	83.9
	SD	4.1
	Median	84.2
	Min	78.8
	Max	89.6
Body mass index, kg/m ²	Mean	27.5
	SD	1.3
	Median	27.8

	Min	25.2
	Max	29.1
Sex, n (%)	Male	6 (100)
Race, n (%)	Black or African American	2 (33.3)
	White	4 (66.7)
Ethnic group, n (%)	Not Hispanic or Latino	6 (100)

hADME, human absorption, distribution, metabolism, and excretion; SD, standard deviation.

Table S7. Arithmetic mean (SD) cumulative fraction of ¹⁴C dose (%) excreted as total ¹⁴C in urine, feces, and total (urine + feces) following a single oral dose of 10 mg of ¹⁴C-AZD4831 (as a solution) over 0–336 hours in healthy volunteers

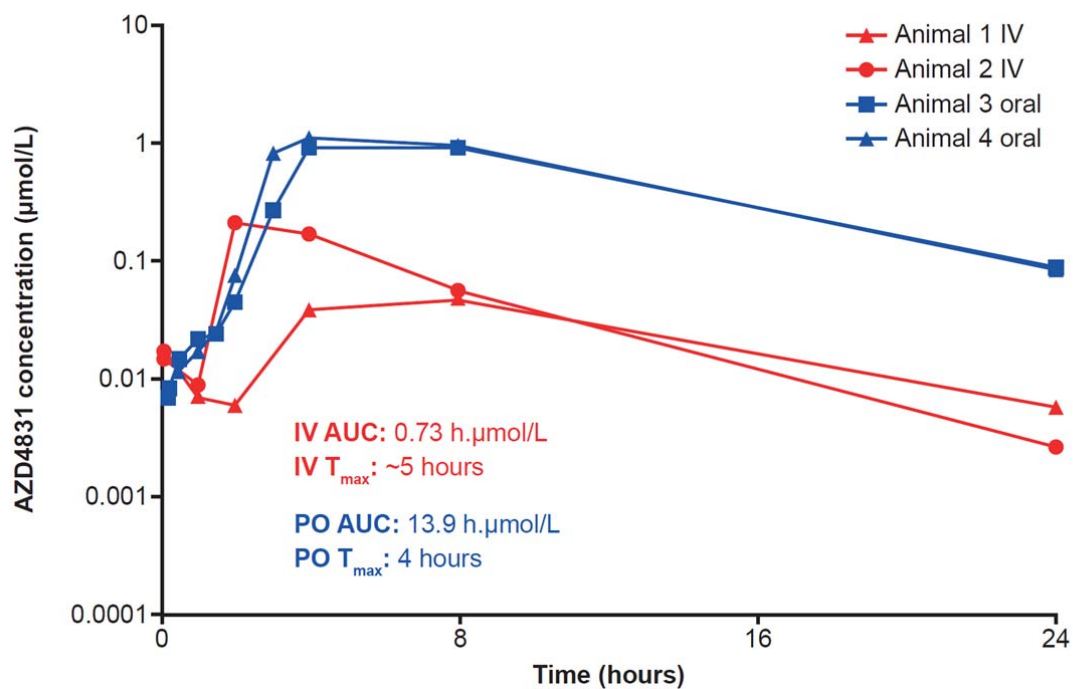
Timepoint (hours)	Mean (SD) cumulative fraction of ¹⁴ C dose (%) excreted		
	Urine	Feces	Total (urine + feces)
Pre-dose	NQ (NC)	NQ (NC)	NQ (NC)
0–6	7.6 (2.7)	–	–
0–12	13.3 (2.9)	–	–
0–24	17.9 (2.7)	5.0 (5.1)	22.9 (6.2)
0–36	26.0 (3.7)	–	–
0–48	29.1 (4.3)	9.7 (8.0)	38.8 (8.0)
0–72	34.5 (5.1)	15.7 (6.3)	50.1 (7.2)
0–96	38.7 (5.2)	19.0 (7.6)	57.7 (8.5)
0–120	41.5 (5.4)	21.5 (5.2)	63.1 (5.9)
0–144	43.9 (5.4)	24.4 (2.7)	68.3 (5.0)
0–168	45.4 (5.5)	26.4 (2.6)	71.8 (3.3)
0–192	46.9 (5.8)	28.4 (2.6)	75.3 (3.9)
0–216	48.1 (5.9)	29.5 (3.3)	77.5 (4.2)
0–240	49.0 (6.0)	30.1 (3.0)	79.0 (4.2)
0–264	49.7 (6.1)	30.9 (3.4)	80.6 (4.4)
0–288	50.3 (6.1)	31.5 (3.4)	81.8 (4.6)

0-312	50.8 (6.2)	32.0 (3.7)	82.8 (5.0)
0-366	51.2 (6.3)	32.4 (3.9)	83.6 (5.3)

NC, not calculated; NQ, not quantifiable; SD, standard deviation.

Supplemental Figures

Fig. S1. LC-MS/MS chromatograms monitoring the concentrations of AZD4831 ($\mu\text{mol/L}$) in rat plasma following a single intravenous or oral administration of M7 in Hans Wistar rats



AUC, area under the plasma concentration-time curve; IV, intravenous; LC-MS/MS, liquid chromatography tandem mass spectrometry; PO, oral; T_{max} , time at maximum plasma concentration.

Supplemental References

- Busse D, Leandersson S, Amberntsson S, Darnell M, and Hilgendorf C (2020)
Industrial Approach to Determine the Relative Contribution of Seven Major
UGT Isoforms to Hepatic Glucuronidation. *J Pharm Sci* **109**:2309-2320.
- Holmberg AA, Weidolf L, Necander S, Bold P, Sidhu S, Pelay-Gimeno M, de Ligt
RAF, Verheij ER, Jauhainen A, Psallidas I, Wahlby Hamren U, and Prothon S
(2022) Characterization of Clinical Absorption, Distribution, Metabolism, and
Excretion and Pharmacokinetics of Velsecorat Using an Intravenous
Microtracer Combined with an Inhaled Dose in Healthy Subjects. *Drug Metab
Dispos* **50**:150-157.
- Inghardt T, Antonsson T, Ericsson C, Hovdal D, Johannesson P, Johansson C,
Jurva U, Kajanus J, Kull B, Michaëlsson E, Pettersen A, Sjögren T, Sörensen
H, Westerlund K, and Lindstedt E-L (2022) Discovery of AZD4831, a
Mechanism-Based Irreversible Inhibitor of Myeloperoxidase, As a Potential
Treatment for Heart Failure with Preserved Ejection Fraction. *Journal of
Medicinal Chemistry*.
- Jurva U, Weidolf L, Sandinge A-S, Leandersson C, Ekdahl A, Li X-Q, Antonsson T,
Sundell J, Westerlund K, Amilon C, Inghardt T, and Gopaul VS (2022)
Biotransformation of the Novel Myeloperoxidase Inhibitor AZD4831 in
Preclinical Species and Humans. *Drug Metab Dispos*:Submitted.

Nelander K, Lagerstrom-Fermer M, Amilon C, Michaelsson E, Heijer M, Kjaer M, Russell M, Han D, Lindstedt EL, Whatling C, Gan LM, and Ericsson H (2021) Early Clinical Experience With AZD4831, A Novel Myeloperoxidase Inhibitor, Developed for Patients With Heart Failure With Preserved Ejection Fraction. *Clin Transl Sci* **14**:812-819.